




CORSA CC0002 Catch Can Instruction Manual

[Home](#) » [CORSA](#) » CORSA CC0002 Catch Can Instruction Manual 

Contents

- [1 CORSA CC0002 Catch Can](#)
- [2 Product Usage Instructions](#)
- [3 INSTRUCTION](#)
- [4 HARDWARE KIT](#)
- [5 REMOVAL INSTRUCTIONS](#)
- [6 INSTALLATION INSTRUCTIONS](#)
- [7 Documents / Resources](#)
 - [7.1 References](#)
- [8 Related Posts](#)



CORSA CC0002 Catch Can



Product Information

The product is a Catch Can designed for 2018+ Jeep JL/GLADIATOR vehicles. It is identified by the part number CC0002 and is manufactured by CORSA Performance. The Catch Can helps to prevent oil and sludge buildup in the engine by separating the oil vapor from the PCV system.

It is recommended that the installation of this system be performed by a qualified service center or professional installer who has the necessary equipment, tools, and experienced personnel. However, if you decide to perform the installation yourself, please read and understand the installation instructions carefully.

The product comes with a warranty which can be activated on the website corsaperformance.com/warranty. The full warranty details are available on the same website.

Product Usage Instructions

1. Before beginning the installation, review the enclosed instructions and make sure all parts are present according to the bill of materials.
2. Ensure that the engine bay is cool before starting any work.
3. If you have any questions about the parts or instructions, or if you encounter any problems during installation, contact technical support at 440.891.0999 or 800.486.0999.
4. If you decide to perform the installation yourself, it is recommended to have an additional person to assist you.
5. Remove the engine cover by unscrewing the two screws using a T-30 Screwdriver. Pull the cover towards the front of the car to remove it from the grommets holding it in place.
6. Locate the PCV line on the driver's side of the intake manifold and remove the quick disconnect fitting attached to the intake manifold by pressing on the grey tab and pulling.
7. Locate and remove the opposite end of the PCV line attached to the crankcase on the back corner passenger side of the engine bay.
8. Detach the PCV line from the clips along its length to completely remove it from the vehicle.

These instructions conclude the removal process. For installation instructions, please refer to the enclosed instructions or visit the website corsaperformance.com for color instructions specific to the part number.

IMPORTANT! WARRANTY AND INSTALLATION INSTRUCTIONS

Please Forward All Information to Consumer

Be sure to review the enclosed instructions prior to beginning the installation process. If you have any questions about the enclosed parts or instructions, or if you encounter a problem during installation:

CALL TECHNICAL SUPPORT: 440.891.0999 or 800.486.0999

TO ACTIVATE YOUR WARRANTY GO TO: [CORSAPERFORMANCE.COM/WARRANTY](https://corsaperformance.com/warranty)

COLOR INSTRUCTIONS ARE AVAILABLE BY PART NUMBER ON: [CORSAPERFORMANCE.COM](https://corsaperformance.com)

NEVER work on a hot engine bay.
Allow time for the vehicle to cool.

INSTALL DIFFICULTY

RECOMMENDED TOOLS & SUPPLIES

- T-30 Torx Driver
- 10mm Socket Wrench
- 2.5mm Hex Wrench

- 11/16" Wrench

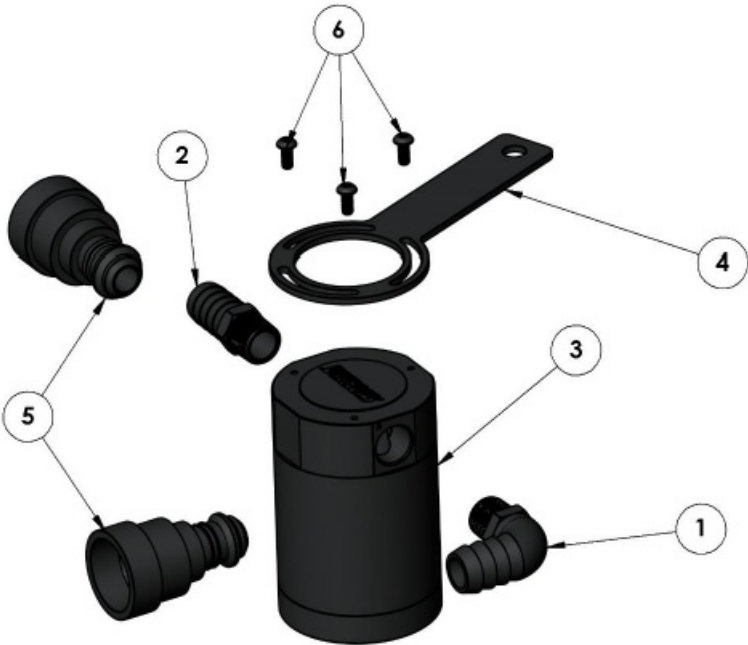
INSTRUCTION

Please take time to read and understand these installation instructions. CORSA recommends that the installation of this system be performed by a qualified service center or professional installer who has the necessary equipment, tools, and experienced personnel. However, if you decide to perform this installation yourself, the use of an additional person may be required.

WARNING: Never work on a hot engine bay. Allow time for the vehicle to cool.
 This warranty does not extend to damaged or defect in the finish of a product or to any product, that in the opinion of CORSA Performance, has been misused, damaged by accident or negligence, altered or modified in any way, faulty installation or installed contrary to CORSA installation instructions, or repaired by an unauthorized service facility.

Full warranty available on www.corsaperformance.com

Please confirm that all parts are present according to the bill of materials before beginning the installation.
 If something is missing call Tech Support at 440.891.099 or Toll Free: 1.800.486.0999



HARDWARE KIT

1. 3/8" NPT Barbed Elbow Fitting	1	3. Catch Can Body	1	6. 4mm Hex Screws	3
2. 3/8" NPT Barbed Straight Fitting	1	4. Bracket	1	NOT PICTURED:	
		5. 5/8" Quick Disconnect Fittings	2	7. 5/8" Hose A	42"
				8. 5/8" Hose B	13"

REMOVAL INSTRUCTIONS

1. Remove the 2 screws that secure the engine cover using a T-30 Screwdriver. Pull the cover out towards the

front of the car to remove it from the grommets holding it in place.



2. Locate the PCV line on driver's side of the intake manifold. Remove the quick disconnect fitting attached to the intake manifold by pressing on the grey tab and pulling.



3. Locate and remove the opposite end of the PCV line attached to the crankcase on the back corner passenger side of the engine bay.



4. There are 4 clips attached along the PCV line. Detach PCV line from clips to remove the line from the vehicle.



INSTALLATION INSTRUCTIONS

1. Use a 2.5mm Hex wrench to install the bracket in the orientation shown. Thread in barbed fittings by hand or by using an 11/16" wrench. **IMPORTANT:** Corsa recommends using thread sealant or PTFE tape on barbed fittings and bottom drain plug to prevent any leaks.



2. Using a 10mm socket, remove the bolt located next to the brake fluid reservoir on the driver's side. Install the catch can bracket using factory bolt to secure the catch can. Make sure the 90 degree fitting is installed in port B and straight fitting in port A of the can to properly route hose.



3. Attach quick disconnect fittings to 1 end of each hose. Attach Hose A to the crankcase side of the PCV system. Route the hose back along the firewall and underneath the coolant reservoir and attach it to port A of the Catch can.

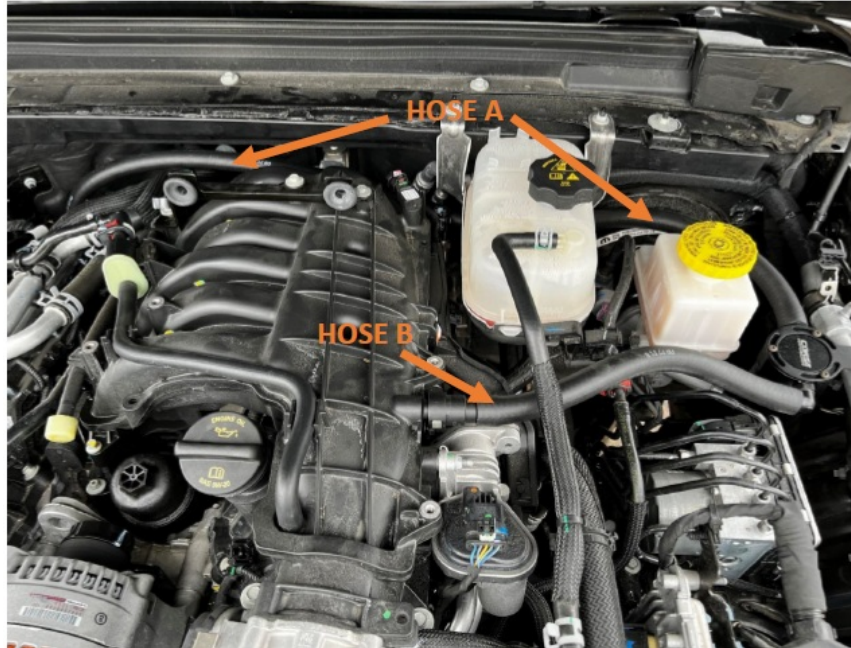


4. Connect the shorter hose to the intake manifold (see arrow) and attach the opposite end to port B of the catch can. You will hear a click when quick disconnect fittings are fully secured in place.



5. Make sure all fittings are secured in place and hose is pushed all the way over the barbed ends of the fittings.

Reinstall engine cover.



This concludes installation instructions.

Check that this catch can complies with your Federal, State and Local laws.
We recommend saving your stock PCV line.

BEFORE ROAD TESTING

1. Start engine, leaving the transmission in park and securing the parking brake.
2. Make sure to look and listen for any unusual noises or air leaks. Repair problems if needed.
3. Once completed it will be necessary to check periodically, after a few heat cycles, for realignment and tightening of all connections.

EMPTYING CATCH CAN: Twist off the bottom of the catch can and dump captured oil back into engine or dispose of it. It is recommended to check and empty the catch can with every oil change.

140 Blaze Industrial Parkway, Berea, OH 44017 | P: 440.891.0999 F: 440.891.1868

techsupport@tmgperformance.com
www.corsaperformance.com

Documents / Resources



[CORSA CC0002 Catch Can](#) [pdf] Instruction Manual
CC0002 Catch Can, CC0002, Catch Can, Can

References

- [CORSA Warranty Center](#)
- [CORSA Performance Exhaust Systems | Buy Cold Air Intake Kits, High-Performance Mufflers & Headers at CORSA PERFORMANCE](#)

Manuals+.