

CorPatch V1.1 2023.08 Trainer User Guide

CorPatch V1.1 2023.08 Trainer User Guide



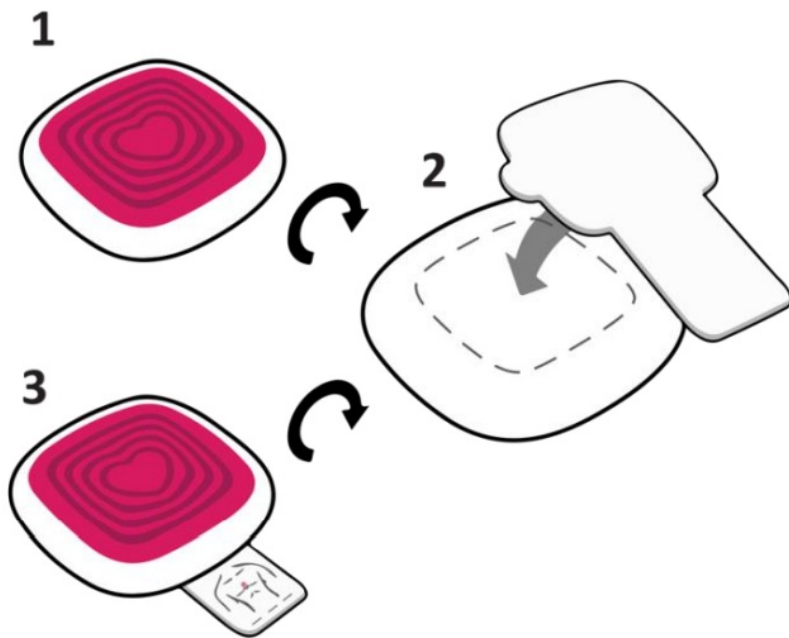
We thank you for joining our vision to save lives and increase survival rates through high-quality Cardiopulmonary Resuscitation (CPR) in case of cardiac arrest.

Contents

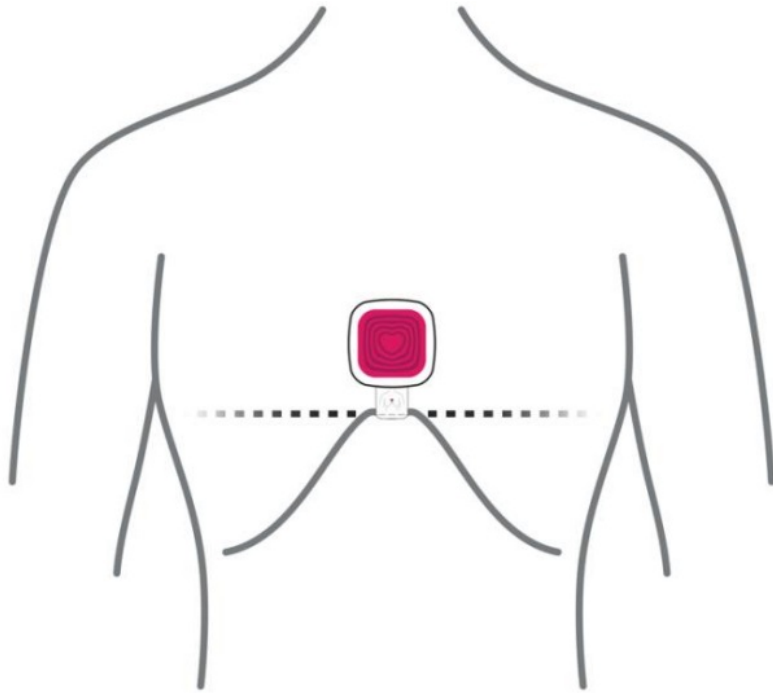
- [1 Setup your CorPatch® Trainer](#)
- [2 Download the CorPatch® Trainer](#)
- [3 Create a Course](#)
- [4 Create a Training](#)
- [5 Select Trainees](#)
- [6 Connect your CorPatch® Trainer](#)
- [7 Begin CPR training](#)
- [8 Results of Training](#)
- [9 Get more information](#)
- [10 Documents / Resources](#)
- [11 Related Posts](#)

Setup your CorPatch® Trainer

For setting up your CorPatch® Trainer, mount the Adhesive Patch that comes with your device on the back of your CorPatch® Trainer.



Now you can apply your CorPatch® Trainer to your CPR Training manikin.



Download the CorPatch® Trainer

App

Download the free CorPatch® Trainer App to your Tablet. To log in to the app, use the credentials from your invitation email.

- **Google Play Store**

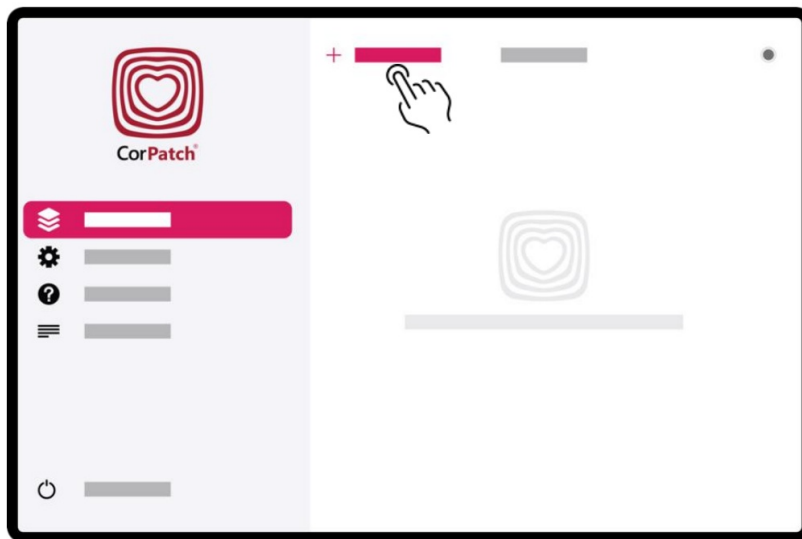


- Apple App Store



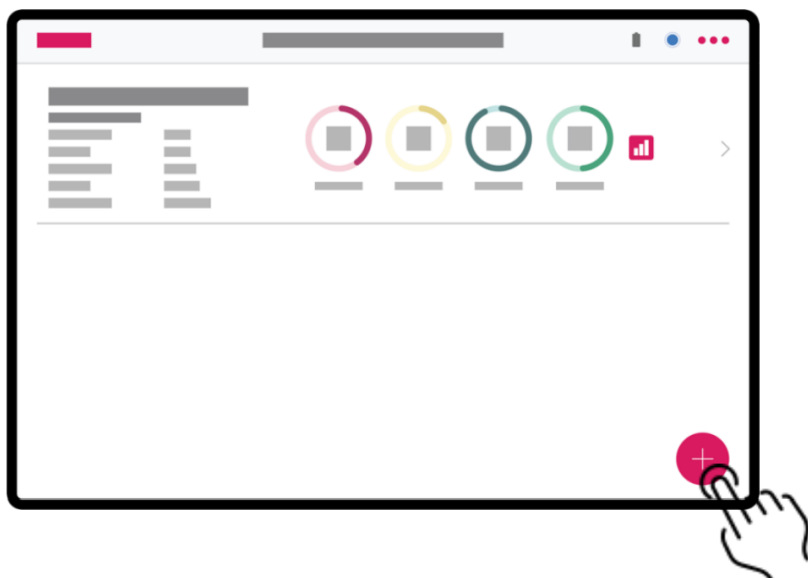
Create a Course

Create a course and add information.



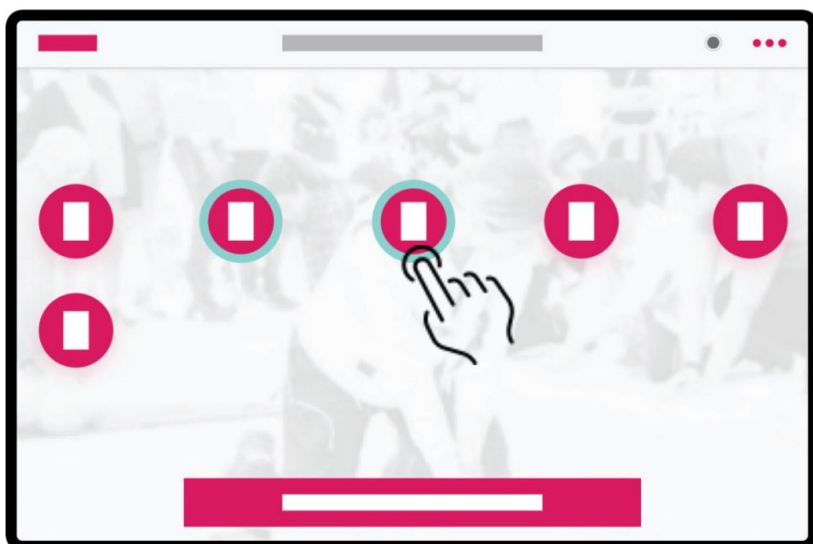
Create a Training

Create a Training with your preferred settings.



Select Trainees

Select the Trainees, that should be part of the training session. You can start a Single or Group Training.



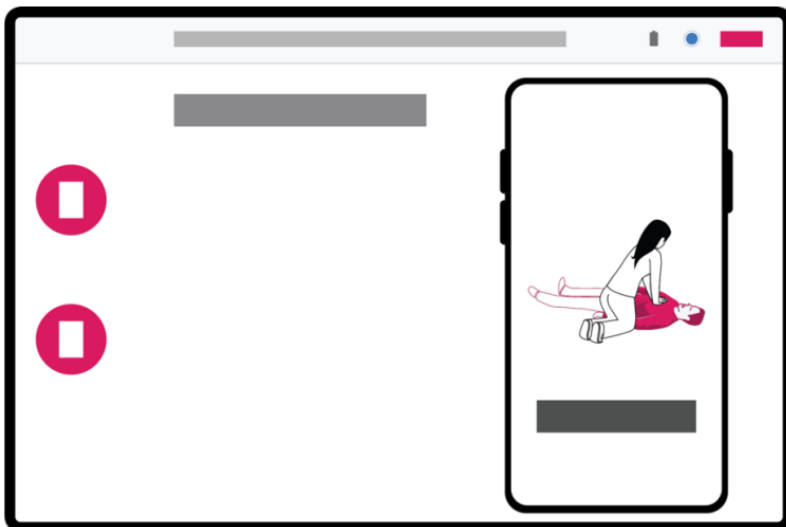
Connect your CorPatch® Trainer

Connect your CorPatch® Trainer when the app prompts you to do so.



Begin CPR training

Choose one of the Trainees (#Number) from the left side of the screen by tapping on them. The CorPatch® Trainer app will advise you on training chest compressions (and rescue breaths).



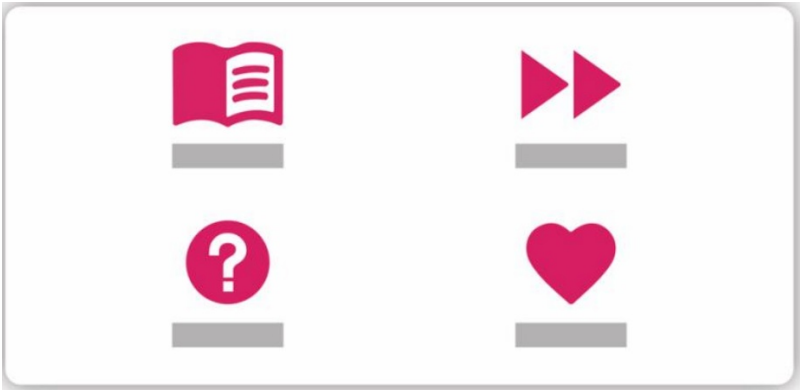
Results of Training

The depth says how many of your compressions were in the range of 5-6 cm. Frequency says how many of your compressions were within 100-120 compressions per minute. Recoil says how many of your compressions had a full recoil. Flow indicates the elapsed time you made compressions without any breaks.



Get more information

To get more information about how to use and individualize your CorPatch® Trainer System, please have a look at the Manual. We also prepared a FAQ and First Aid Compendium to help you improve your knowledge about Cardiac Arrest and First Aid.




Please be sure to read and follow the warnings regarding medical emergency situations identified in the Manual.

© 2023 SmartResQ ApS.
All rights reserved. The Bluetooth® word mark and logos are registered trademarks owned by Bluetooth SIG, Inc. and are used under license. IOS is a registered trademark and is used under license. Designed by SmartResQ.



Documents / Resources

 CorPatch® <small>Quick Start Guide for CorPatch® Trainer</small> <small>English V1.1 2023.08 CorPatch® Trainer System (B11)</small>	CorPatch V1.1 2023.08 Trainer [pdf] User Guide CPT_QSG_B11_V1.1-2023.08, V1.1 2023.08, V1.1 2023.08 Trainer, Trainer
--	---