



COROS W331 Pace 2 Running Watch User Guide

[Home](#) » [COROS](#) » COROS W331 Pace 2 Running Watch User Guide 

Contents

- [1 COROS W331 Pace 2 Running Watch](#)
- [2 Download the COROS app](#)
- [3 Battery Warnings](#)
- [4 FCC Warning](#)
- [5 Documents / Resources](#)
- [6 Related Posts](#)



COROS W331 Pace 2 Running Watch



Product Information

The product is a device developed by COROS Sports Technology. It is designed for various activities and is compatible with the COROS app. The device comes with a charging cable and has specific charging

specifications. It also complies with safety standards and regulations.

Charging Specifications

- Input: 5V1A

Battery Warnings

- Do not perform an unauthorized battery replacement.
- Avoid excessive exposure to extreme hot or cold temperatures.
- Do not submerge the battery.
- Keep the battery away from children.

IC Warning

This device complies with Innovation, Science, and Economic Development Canada license-exempt RSS standard (s). Operation is subject to the following two conditions: (1) this device may not cause interference, and (2) this device must accept any interference, including interference that may cause undesired operation of the device.

Regulatory Information

For regulatory information, certification, and compliance marks specific to the product, go to Settings > More Settings > About Product Name.

Manufacturer Information

The device is manufactured by Guangdong COROS Sports Technology Joint Stock Company in China. The importers for the United States, European Union, and United Kingdom are COROS Wearables, Inc., COROS Netherlands B.V., and COROS Wearables UK Ltd. respectively.

Contact Information

- China Manufacturer: Guangdong COROS Sports Technology Joint Stock Company, Room 601 & 701, Bld. 2, No. 2, Science and Technology 9 Rd, Songshan Lake Hi-Tech Zone, Dongguan, Guangdong 523808, China
- USA Importer: COROS Wearables, Inc., 3 Peters Canyon Road Suite 100, Irvine, CA 92606, United States
- EU Importer: COROS Netherlands B.V., De Oude Veiling 79M, 1689 AD Zwaag, Netherlands
- UK Importer: COROS Wearables UK Ltd., Office 4, Embsay Mills, Skipton, North Yorkshire, BD23 6QF, United Kingdom

FCC ID and IC

- FCC ID: 2BBGF-W331
- IC: 29574-W331

Product Safety

The product meets safety standards and regulations. It is advised to follow the provided charging specifications and battery warnings. The device should not be left on the charger for an extended time to avoid battery damage. Charging in wet conditions should be avoided.

Product Usage Instructions

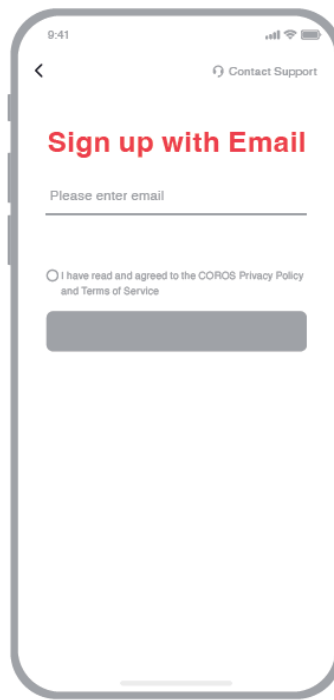
1. Download and install the COROS app from app.coros.com or respective app stores.
2. Sign up using your email address and agree to the COROS Privacy Policy and Terms of Service.
3. Verify your email address by entering the verification code sent to your email.
4. Open the COROS app and navigate to the “My Device” section.
5. Select “Add New Device” to start pairing with the device.
6. Follow the on-screen instructions to complete the pairing process.
7. Once paired, you can view your progress, activities, explore features, and manage your profile using the COROS app.
8. To scan for warranty and safety information, use the built-in QR code scanner in the COROS app.

Please refer to the user manual or the “Settings > More Settings > About product Name” section in the COROS app for additional information, regulatory compliance, and certifications specific to your product.

Download the COROS app



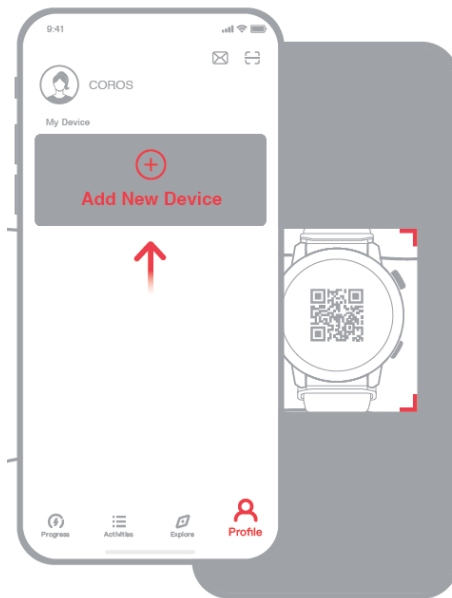
Create your COROS account



Press to power on



Pair with the COROS app



Scan with the COROS app for warranty and safety information



- Charging Specs
- Input: 5V 1A

This device comes with a charging cable. Please only use COROS accessories to charge this device. Do not leave the device on the charger for an extended time to avoid damage to the battery. Please avoid charging in wet conditions.

Battery Warnings

- Do not perform an unauthorized battery replacement.
- Avoid excessive exposure to extreme hot or cold temperatures.
- Do not submerge the battery.
- Keep the battery away from children

FCC Warning

Any Changes or modifications not expressly approved by the party responsible for compliance could void the user's authority to operate the equipment. This device complies with part 15 of the FCC Rules. Operation is subject to the following two conditions:(1) This device may not cause harmful interference, and (2) this device must accept any interference received, including interference that may cause undesired operation.

Note: This equipment has been tested and found to comply with the limits for a Class B digital device, pursuant to part 15 of the FCC Rules. These limits are designed to provide reasonable protection against harmful interference in a residential installation. This equipment generates uses and can radiate radio frequency energy and, if not installed and used in accordance with the instructions, may cause harmful interference to radio communications. However, there is no guarantee that interference will not occur in a particular installation. If this equipment does cause harmful interference to radio or television reception, which can be determined by turning the equipment off and on, the user is encouraged to try to correct the interference by one or more of the following measures:

- Reorient or relocate the receiving antenna.
- Increase the separation between the equipment and the receiver.
- Connect the equipment to an outlet on a circuit different from that to which the receiver is connected.
- Consult the dealer or an experienced radio / TV technician for help.

FCC Radiation Exposure Statement

This equipment complies with FCC radiation exposure limits set forth for an uncontrolled environment. This transmitter must not be co-located or operating in conjunction with any other antenna or transmitter. For face-up, 10mm was used for the test, this equipment should be installed and operated with a minimum distance of 10m.

IC Warning

This device complies with Innovation, Science and Economic Development Canada license-exempt RSS standard (s). Operation is subject to the following two conditions: (1) this device may not cause interference, and (2) this device must accept any interference, including interference that may cause undesired operation of the device any changes or modifications not expressly approved by the party responsible for compliance could void the user's authority to operate the equipment.

IC exposition aux radiations: This equipment complies with ISED RF radiation exposure limits set forth for an uncontrolled environment. This transmitter must not be co-located or operating in conjunction with any other antenna or transmitter. For face-up, 10mm was used for the test, this equipment should be installed and operated with a minimum distance of 10m

CE Statement

COROS hereby declares that this product complies with the essential requirements and the other relevant provisions of Directive 2014/53/EU. The full text of the EU Declaration of Conformity is available at the following web link: <https://coros.com/declaration-of-conformity> This device contains a Bluetooth module for smartphones and external sensors connection. The Bluetooth module uses a 2.4 GHz frequency and may interfere with inflight and ground communication devices.

- COROS PACE 2 Bluetooth: 2400MHz – 2483.5MHz, -6.53dBm;
- COROS APEX 2 Bluetooth: 2400MHz – 2483.5MHz, 3.17dBm WIFI: 2400MHz – 2483.5MHz, 14.76dBm;
- COROS APEX 2 Pro Bluetooth: 2400MHz – 2483.5MHz, 3.47dBm WIFI: 2400MHz – 2483.5MHz, 6.93dBm;
- COROS VERTIX 2 Bluetooth: 2400MHz – 2483.5MHz, 9.26dBm WIFI: 2400MHz – 2483.5MHz, 14.44dBm;
- COROS PACE 3 Bluetooth: 2400MHz – 2483.5MHz, 11.79dBm WIFI: 2400MHz – 2483.5MHz, 13.68dBm


Instructions to user

For regulatory information, certification, and compliance marks specific to the product Name, go to Settings > More Settings > About Product Name.

Guangdong COROS Sports Technology Joint Stock Company

Room 601 & 701, Bld. 2, No. 2, Science and Technology 9 Rd, Songshan Lake Hi-Tech Zone, Dongguan, Guangdong 523808, China

Documents / Resources

 <small>Quick Start Guide</small>	<p>COROS W331 Pace 2 Running Watch [pdf] User Guide</p> <p>W331, 2BBGF-W331, 2BBGFW331, Pace 2, Running Watch, Pace 2 Running Watch, W331 Pace 2 Running Watch, Watch</p>
---	--

