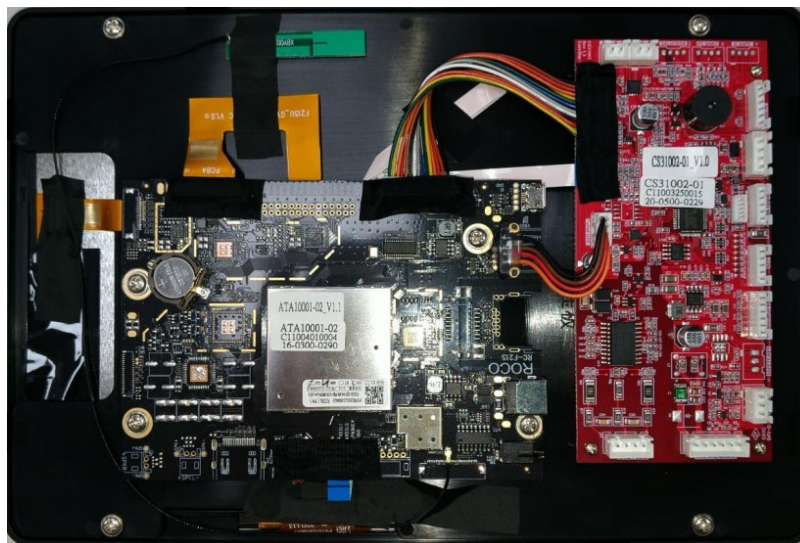




CoreStar F215U Function Board User Manual

[Home](#) » [CoreStar](#) » CoreStar F215U Function Board User Manual 

CoreStar F215U Function Board User Manual

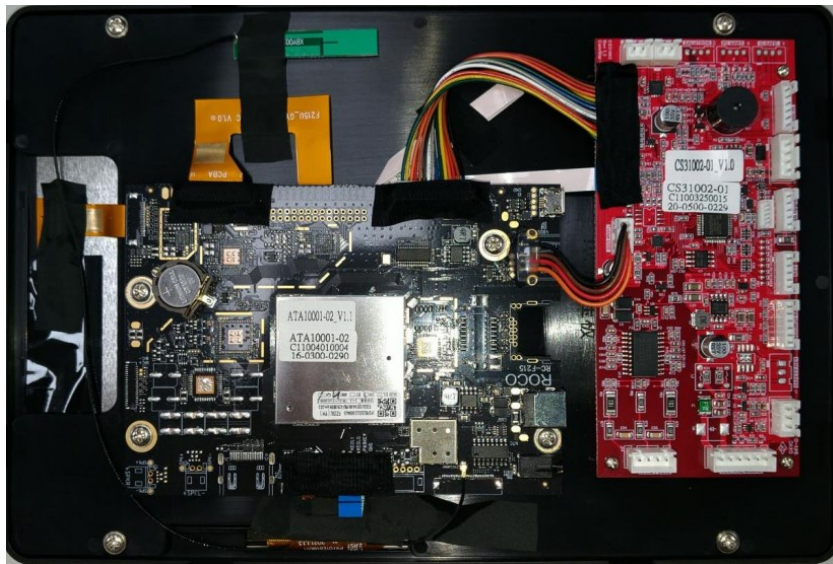


Contents

- [1 Hardware overview](#)
- [2 Operational description](#)
- [3 FCC WARING STATEMENT](#)
- [4 Documents / Resources](#)
 - [4.1 References](#)
- [5 Related Posts](#)

Hardware overview

Main Board PCB Physical Specifications



Connector Definitions

| Pin No. | Description | Pin No. | Description | Pin No. | Description | Pin No. | Description |
|---------|-------------|--------------|-------------|---------|-------------|---------|-------------|
| 1~4 | +12V | 5~7 10 13 | GND | 8 | +5V | 9 | +3.3V |
| Pin No. | Description | Pin No. | Description | Pin No. | Description | Pin No. | Description |
| 11 | UART Rx | 12 | UART Tx | 14 | RS232 Tx | 15 | RS232 Rx |

J2301/J17 System Key and Headphone connector

CON2501 12V DC Power input

AJ1/BJ1 Speaker connector

J15 External Line-in socket connector

J2 FAN control connector

J6 External USB socket connector

J10 Keyboard connector

J11 Hand Rail key connector

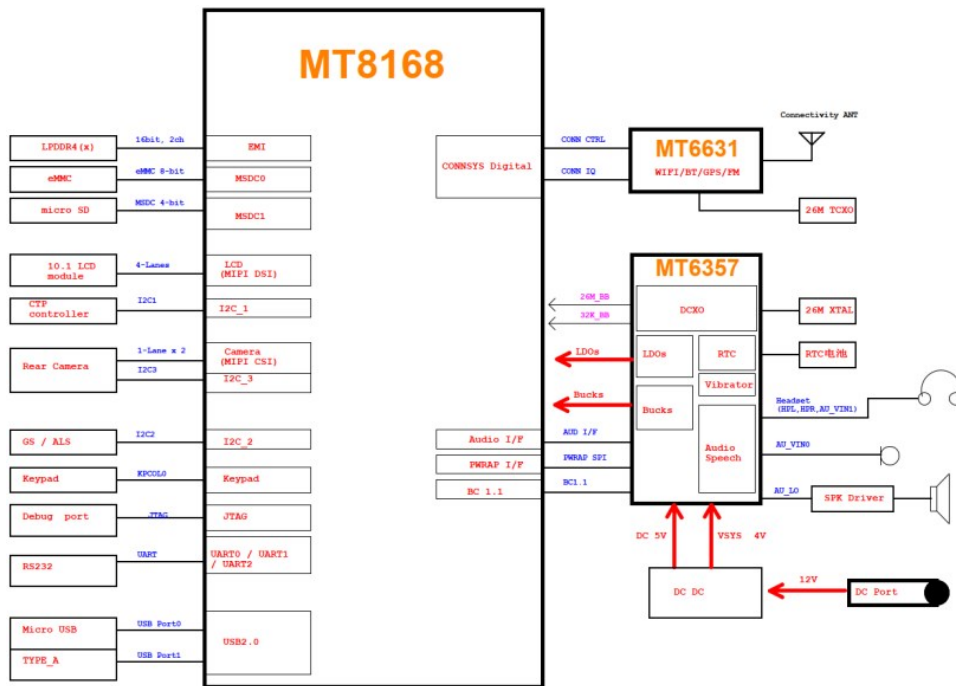
J5 5Khz Heart rate receiver module connector

J14 Wired heart rate sensor connector

J7 USB bridge connector

Operational description

System block diagram



Processor: MediaTek MT8168, Quad-core ARM® 2.0GHz Cortex-A53 MPCore

Memory: 2GB LPDDR4

Connectivity: 2.4 GHz and 5.0 GHz IEEE 802.11a/b/g/n/ac wireless LAN Supports Bluetooth 5 dual mode 2 × USB 2.0 ports

GPIO: UART * 2 RS232 * 1

Video & sound: HDMI ports * 1 (up to FHD supported) 4-lane MIPI DSI display port stereo audio port

Multimedia: Mali-G52 3EE MC1

H.264 decoder: Main/high profile 1080p @60fps/40Mbps

H.264 encoder: High profile 1080p @ 60fps OpenGL ES 3.2/2.0/1.1 OpenCL 2.0 full profile

Input power: The 12V DC power will power the console and whole system including the RF system.

lifetime: The Model will remain in production until at least January 2026.

Operating frequency : 2142-2472MHz / 5150~5250Mhz support IEEE 802.11b/g/n/a/ac (Frequency Bandwidth : 20MHz / 40MHz/80MHz).

PCB antenna 0.69dbi (2.4GHz) , 1.24dBi(5GHz)

Modulation

BT/BLE GFSK / DSSS

Wi-Fi DBPSK/DQPSK/CCK(DSSS)

System BT can search the A2DP devices manually and connecting to one of them.

User can search Wi-Fi AP manually via system setting menu and connecting to one of them.

FCC WARNING STATEMENT

This equipment has been tested and found to comply with the limits for a Class B digital device, pursuant to part 15 of the FCC rules. These limits are designed to provide reasonable protection against harmful interference in a residential installation. This equipment generates, uses and can radiate radio frequency energy and, if not installed and used in accordance with the instructions, may cause harmful interference to radio communications. However, there is no guarantee that interference will not occur in a particular installation. If this equipment does cause harmful interference to radio or television reception, which can be determined by turning the equipment off and on, the user is encouraged to try to correct the interference by one or more of the following measures:

- Reorient or relocate the receiving antenna.
- Increase the separation between the equipment and receiver.

- Connect the equipment into an outlet on a circuit different from that to which the receiver is connected.
- Consult the dealer or an experienced radio/TV technician for help

This device complies with Part 15 of the FCC Rules. Operation is subject to the following two conditions:

1. this device may not cause harmful interference, and
2. this device must accept any interference received, including interference that may cause undesired operation of the device.

• FCC RF Radiation Exposure Statement:

This equipment complies with FCC RF radiation exposure limits set forth for an uncontrolled environment. This equipment should be installed and operated with a minimum distance of 20 centimeters between the radiator and your body.

• FCC RF Radiation Exposure Statement:

This equipment complies with FCC radiation exposure limits set forth for an uncontrolled environment. This equipment should be installed and operated with minimum distance 20cm between the radiator & your body.
This transmitter must not be co-located or operating in conjunction with any other antenna or transmitter.

Operations in the 5.15-5.25GHz band are restricted to indoor usage only. This device meets all the other requirements specified in Part 15E, Section 15.407 of the FCC Rules. The end product shall has the words “Contains Transmitter Module FCC ID:2ANCG-FU215.

OEM statement

The Original Equipment Manufacturer (OEM) must ensure that the OEM modular transmitter must be labeled with its own FCC ID number. This includes a clearly visible label on the outside of the final product enclosure that displays the contents shown below. If the FCC ID is not visible when the equipment is installed inside another device, then the outside of the device into which the equipment is installed must also display a label referring to the enclosed equipment. The end product with this module may subject to perform FCC part 15B unintentional emission test requirement and be properly authorized while installation to host(s), and platform, and integrator are obligated to have its manual or instruction with the related compliance warning to end users. This device is intended for OEM integrator only The end product with this module may be subject to re-evaluate RF exposure as per 47CFR § 2.1091, and §2.1093 if antenna or usage, including co-located usage of other transmitters, of the subsequent installation are changed.

This radio transmitter has been approved by FCC/Innovation, Science and Economic Development Canada to operate with the antenna types listed below, with the maximum permissible gain indicated. Antenna types not included in this list that Have a gain greater than the maximum gain indicated for any type listed are strictly prohibited for use with this device. Antennas gain: 0.69dBi (2.4G) ,1.24dBi(5G)

Documents / Resources

| | |
|---|---|
|  | <p>CoreStar F215U Function Board [pdf] User Manual F215U Function Board, F215U, Function Board, Board</p> |
|---|---|

References

-  [Welcome to the Health Canada Web site | Bienvenue au site Web de Santé Canada](#)

Manuals+.