



COREMORROW E70 4-Channel Piezo Controller Software User Manual

[Home](#) » [COREMORROW](#) » COREMORROW E70 4-Channel Piezo Controller Software User Manual 



E70 4-Channel Piezo Controller Software User Manual



Contents

- [1 E70 4-Channel Piezo Controller Software](#)
- [2 Security](#)
- [3 Software purpose](#)
- [4 Software Installation](#)
- [5 Software Instruction](#)
- [6 Contact us](#)
- [7 Documents / Resources](#)
 - [7.1 References](#)
- [8 Related Posts](#)

E70 4-Channel Piezo Controller Software

4-Channel E70 Piezo Controller Software

User Manual Version: V1.0

This document describes the following products: E70.C4K

- Piezo Controller Open loop 4 channels
- E70.D4S Piezo Controller SGS sensor 4 channels

Security

1.1 Purpose

- The surface of 4-Channel E70 should be kept clean and dry, do't operate in humid or static environment.
- 4-Channel E70 is used to drive capacitive loads (such as piezo actuator).
- 4-Channel E70 can't be used in the manuals of other products with the same name.
- Pay attention to 4-Channel E70 can't be used to drive inductive or impedance loads.
- 4-Channel E70 can be used for static and dynamic operating applications

1.2 Safety instructions

4-Channel E70 is based on nationally recognized safety standards. Improper use may cause personal injury or damage it. Operator is responsible for correct installation and operation of it.

- Please read the user manual in detail.
- Please immediately eliminate any malfunctions and safety hazards caused by malfunctions.

If the protective grounding wire is not connected or connected incorrectly, there will be possibility of electric leakage. Maybe it will cause serious or even fatal injuries when touch 4-Channel E70 at this time.

If open 4-Channel E70 privately, touching live parts may cause electric shock, resulting in serious or even fatal injury or damage to the piezo controller.

- Only authorized professional could open 4-Channel E70.
- When opening 4-Channel E70, please disconnect the power plug.
- Please do not touch any internal parts when operating in an exposed state.

1.3 User Manual Notes

- The contents described in user manual are standard product descriptions, special product parameters are not described in detail in this manual.
- User manual is available for download on CoreMorrow website(www.coremorrow.com).
- When using 4-Channel E70, the user manual should be placed near the system for easy reference in time. If the user manual is lost or damaged, please contact our customer service department.
- Please timely add all the information given in the manufacturer's user manual, such as supplements or technical descriptions.
- If your user manual is incomplete, it will miss a lot of important information, cause serious or fatal injuries, and cause property damage. Please read and understood the contents of the user manual before installing and

operating 4-Channel E70.

- Only authorized professionals who meet the technical requirements could install, operate, maintain and clean 4-Channel E70.

Software purpose

Through the software to realize visual drive control of 4-Channel E70 piezo controller. The software separately controls the functions of 4-Channel E70 through the classic single point, classic waveform, classic configuration, analog array/open and closed loop settings, and phase angle waveform functions to achieve convenient, intuitive and fast control purposes.

Software Installation

3.1 Serial Port Setup

Notice! The serial port cable should be plugged and unplugged when the computer and the piezo controller interface are closed or one end is closed, otherwise it may damage the computer serial port or the serial chip of the controller interface!

Rear panel of 4-Channel E70 provides a 9-pin D-SUB connector (2/3/5 is serial port direct connection, 6/7/8/9 is RS-422 communication interface, please refer to the user manual of 4-Channel E70 piezo controller for details).

Please use the serial cable provided by the manufacturer to connect 4-Channel E70 and the PC, which could easily communicate with the PC through the terminal program.

If the PC has only one serial port, the default is COM1.

When the computer software is controlled through the RS-232 serial port, it could be selected the serial port channel and baud rate on the software interface. Before connecting the computer, please ensure that the COM port and baud rate are consistent with 4-Channel E70. Otherwise, the connection fails.

Select the input mode of the controller as software control mode, switch the control switch on the panel to M, turn on the computer, and run the interface software of the controller for corresponding control. Please see section 4 for details.

3.2 USB Communication

3.2.1 Hardware requirement

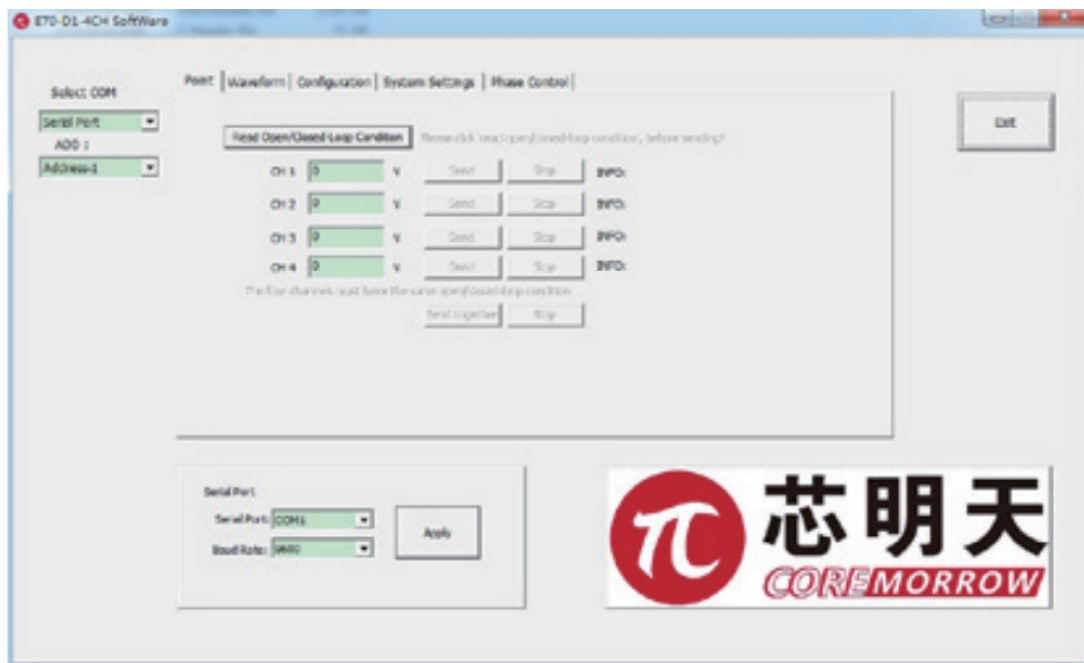
- Windows system computer.
- 4-Channel E70 piezo controller.
- USB 2.0 connection cable.
- Install the USB driver software when the above parts are working properly.

4-Channel E70 front panel provides a micro USB interface, please connect the PC and 4-Channel E70 through the USB cable, and then open the system.

Select the input mode of the controller as software control mode, switch the control switch on the panel to M, turn on the computer, and run the interface software of the controller for corresponding control. Please see section 4 for details.

Software Instruction

4.1 Point



CH1 send point data:

Select "Point", then click "Read Open/Closed-Loop Condition", fill in 10 in the edit box (10V for open loop, 10m/mrad for closed loop), and click "Send" to complete the send task. Click "Stop" and the controller stops output.

Similarly, CH2, CH3, and CH4 send corresponding data.

4.2 Waveform



1. Click "Read Open/Closed-Loop Condition" read the open/closed loop data, and match the piezo controller state.
2. Select "Single Channel High-Freq Control". Single Channel high-freq, the frequency could be up to 1kHz~4kHz.
3. Click "Wave Type", select the send waveform, e.g. sine wave, square wave, triangular wave, sawtooth wave.

	Waveform Type	P-P Voltage	Frequency	Offset	
CH 1	Sin Wave	0 V	0 Hz	0 V	Send
CH 2	Sin Wave	0 V	0 Hz	0 V	Send
CH 3	Square Wave	0 V	0 Hz	0 V	Send
CH 4	Triangle Wave	0 V	0 Hz	0 V	Send
	Sawtooth Wave	0 V	0 Hz	0 V	Send

Stop

4. Fill in the data of P-P voltage, frequency, offset(usually half of the P-P voltage), waveform transmission meets $U^2 \times f \times C < \text{Power}$.

U = voltage, V

f = frequency, Hz

C = capacitance, F

	Waveform Type	P-P Voltage	Frequency	Offset	
CH 1	Sin Wave	10 V	1 Hz	5 V	Send

5. Check the entered data values and click “Send”. CH1 data waveform is sent.

6. Click the “Stop” to complete the waveform output stop.

4.3 Configuration

Point	Waveform	Configuration	System Settings	Phase Control			
CH 1:	Max.move/ μm	Power/W	Load Capacity/ μF	Min.voltage/V	Max. voltage/V	Min.move/ μm	Read System Information Save As Default Set the Baud Rate to 9600
CH 2:	0	9	1	0	120	0	
CH 3:	0	9	1	0	120	0	
CH 4:	0	0	0	0	0	0	
E70.D4 Control Software, Device Info: Version No.2.7.1							Device Info

Click “Read System Information”. After the data is transmitted from the piezocontroller to the software, click “Save As Default” to complete the matching work between the computer control software and the piezo controller. (Note: after the same computer read system information read successfully and save as the default, when using the software again, there is no need to carry out configuration, read system information and other operations!)

4.4 System Settings

- Analog control: external analog signal control, at this time, the software control failure.
- Digital control: software control, at this time, the analog control failure.
- Switch to digital control: select the digital control from the drop down box, then click “Start”, the setting button lights up, click “Setting”, complete the setting to the digital control! Please see the figure below:

Point | Waveform | Configuration | System Settings | Phase Control

Ch1 CH2 CH3 analog control Or digital control

digital control ▼ Start Set

Ch1 CH2 CH3 Open Or Close Loop

Open loop ▼ Start Set

Open loop ▼ Start Set

Open loop ▼ Start Set

Open loop ▼ Start Set

4.5 Phase Control

Point | Waveform | Configuration | System Settings | Phase Control

Read Open/Closed-Loop Condition

Waveform Type	Frequency/Hz	P-P Voltage	Offset	Phase Angle/°	Send Data
Sine Wave ▼	0	0 v	0 v	0	Send Data
same waveType		0 v	0 v	0	Send Data
same Frequency		0 v	0 v	0	Send Data
same Frequency		0 v	0 v	0	Send Data

Start Stop

- Phase control: the waveform and the frequency must be the same, P-P voltage and offset could be different, phase Angle range from 0.0 to 360.0 degrees.
- Phase wavefor control mode: select the waveform, then fill in the frequency, P-P voltage, offset, phase angle and then fill in the related data of other channels, click" Send data"(this time just store the waveform data value of the data to be sent to the piezo controller), click"Start", the piezo controller receive the execution waveform sending command of the trigger command.
- Stop sending waveform: Click "Stop" to stop outputting the waveform.

Fill in the relevant data of the waveform to be sent:

Point | Waveform | Configuration | System Settings | Phase Control

Read Open/Closed-Loop Condition

Waveform Type	Frequency/Hz	P-P Voltage	Offset	Phase Angle/°		
Sin Wave	10	30 V	15 V	0	Send Data	Start Stop
same waveType	45	22.5 V	90	Send Data		
same Frequency	30	30 V	80	Send Data		
same Frequency	90	45 V	270	Send Data		

Send waveform data to the piezo controller:

Point | Waveform | Configuration | System Settings | Phase Control

Read Open/Closed-Loop Condition

Waveform Type	Frequency/Hz	P-P Voltage	Offset	Phase Angle/°		
Sin Wave	10	30 V	15 V	0	Send Data	Start Stop
same waveType	45	22.5 V	90	Send Data		
same Frequency	30	30 V	80	Send Data		
same Frequency	90	45 V	270	Send Data		

Click "Start" to send the phase angle waveform:

Point | Waveform | Configuration | System Settings | Phase Control

Read Open/Closed-Loop Condition

Waveform Type	Frequency/Hz	P-P Voltage	Offset	Phase Angle/°		
Sin Wave	10	30 V	15 V	0	Send Data	Start Stop
same waveType	45	22.5 V	90	Send Data		
same Frequency	30	30 V	80	Send Data		
same Frequency	90	45 V	270	Send Data		

Stop sending multi-channel waveform:



Contact us



Harbin Core Tomorrow Science & Technology Co., Ltd.

Tel: +86-451-86268790

Email: info@coremorrow.com

Website: www.coremorrow.com

Address: Building I2, No.191 Xuefu Road, Nangang District, Harbin, HLJ, China
CoreMorrow Official and CTO WeChat are below:



<http://weixin.qq.com/r/PEzawqnEyfS2re2h9xku>

<https://u.wechat.com/EAOWfcTPsTfQdVleK41V9hg>

Documents / Resources

	<p>COREMORROW E70 4-Channel Piezo Controller Software [pdf] User Manual</p> <p>E70 4-Channel Piezo Controller Software, E70, 4-Channel Piezo Controller Software, 4-Channel Piezo Controller, Piezo Controller, Controller</p>
--	---

References

Manuals+.