




core Eclipse-2.0
Touch Panel



core Eclipse-2.0 Touch Panel User Guide

[Home](#) » [CORE](#) » core Eclipse-2.0 Touch Panel User Guide 

Contents

- [1 core Eclipse-2.0 Touch Panel](#)
- [2 Package Contents](#)
- [3 Technical Specification](#)
- [4 Components](#)
- [5 Safety Remarks](#)
- [6 Mounting](#)
- [7 Commissioning](#)
- [8 Documents / Resources](#)
 - [8.1 References](#)
- [9 Related Posts](#)



core Eclipse-2.0 Touch Panel



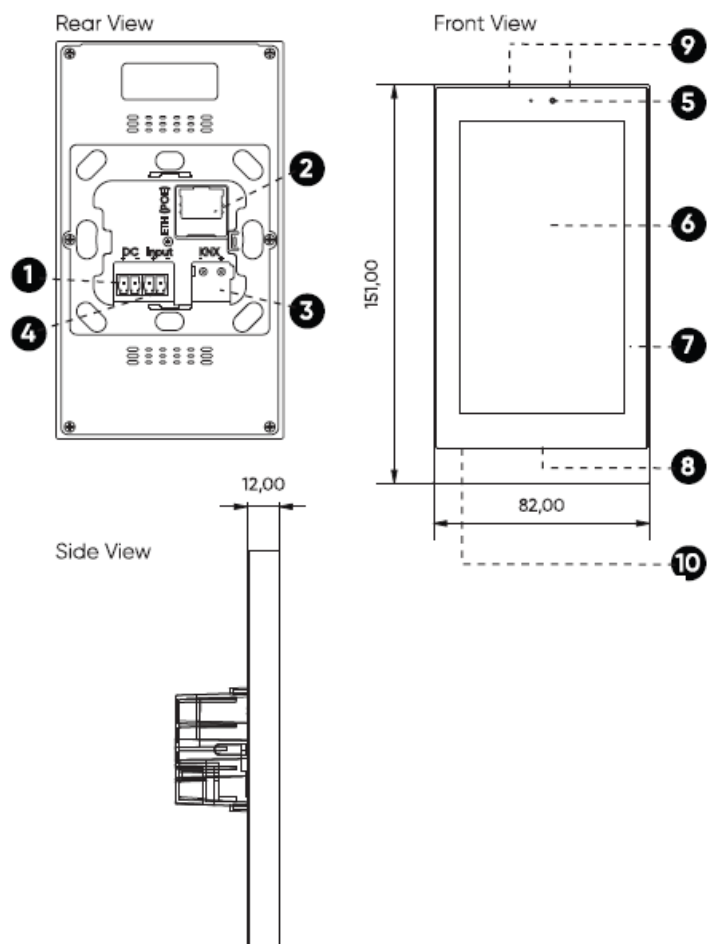
Package Contents

- Core Eclipse 2.0 5" Touch Panel
- Screws
- Metal Mounting Support
- Connectors

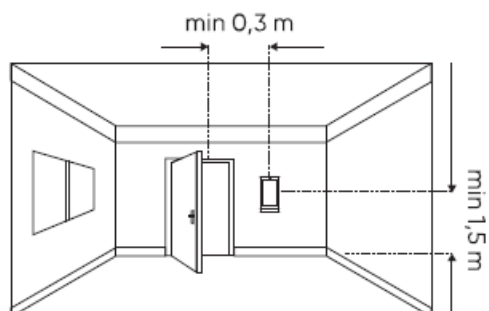
Technical Specification

CONCEPT	DESCRIPTION	CONCEPT	DESCRIPTION
CPU	: 1.8 GHz Quad Core ARM Cortex- A55 CPU / Rockchip RK3566 Chipset	Sensors	: Temperature, Humidity, Proximity, Ambient Light
Memory	: 2GB	RS-485	: x
Hard Disk	: 8GB EMMC	RS-232	: x
Operating System	: Android 12	Dual Network Connectivity	: No
Power	: 12-30 VDC & POE	LAN	: 1
Screen Size	: 5"	Wi-Fi	: No
Resolution	: 720px X 1280px	Microphone	: Microphone array
Speaker	: 1 x 4 Ohm - 2 Watts	Input	: 1 Digital Inputs
KNX Bus Connection	: KNX-TP	Operating System	: CoreOS 4.0
Thermostat Logic	: Yes	Installation	: Surface Mounting with 2M Inwall Box
Output	: x		

Components



1. 30 VDC
2. ETH(POE)
3. KNX
4. Input
5. Proximity Sensor
6. LCD
7. Touch Panel
8. Speaker
9. Microphone
10. Temperature and Humidity sensor



Safety Remarks

Warnings

- Installation, electrical connection, and directives, for which the device has configuration and commissioning of been certified, is no longer the device can only be carried out guaranteed. by qualified personnel in compliance with the applicable
- To clean use a dry cloth. It must be technical standards and laws of avoid the use of solvents or the respective countries. other aggressive substances.
- The electrical connection of the Contact with fluids to the plate device can only be carried out by and socket is to be avoided. qualified personnel. Incorrect installation may result in electric
- The device can not be installed shock or fire. Before making the close to the heat sources such as electrical connections, make sure the power supply has been turned off.
- Do not connect the main voltage (230V AC) to VDC input, digital input and KNX connector of the device.
- Opening the housing of the device causes the immediate end of the warranty period.
- In case of tampering, the compliance with the essential requirements of the applicable radiators or house hold appliances or in position subjected to direct sunlight.
- The device has to be installed preferably on an internal wall at the height of 1,5m and at least 0,3m far from doors.

Mounting

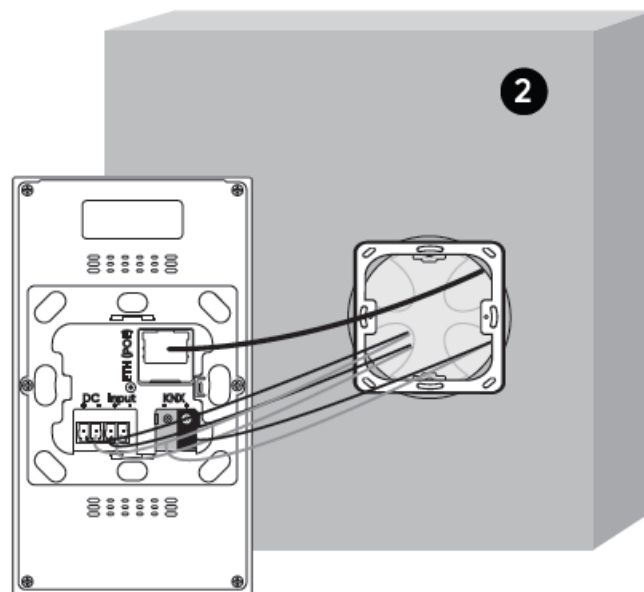
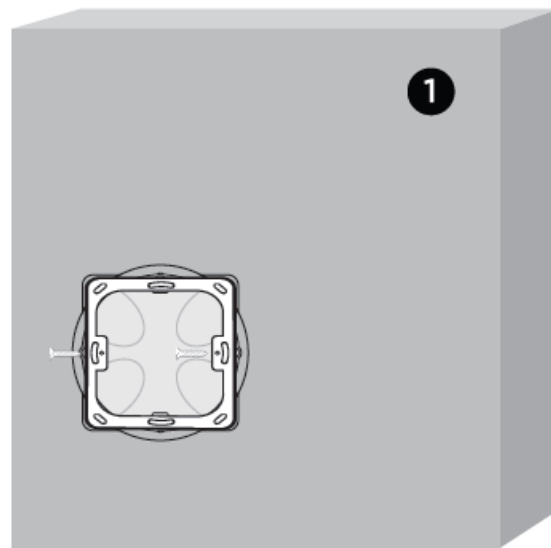
1. Mount the metal mounting support. (Included in the box.)

Use screws included in the box (M3x15 mm)

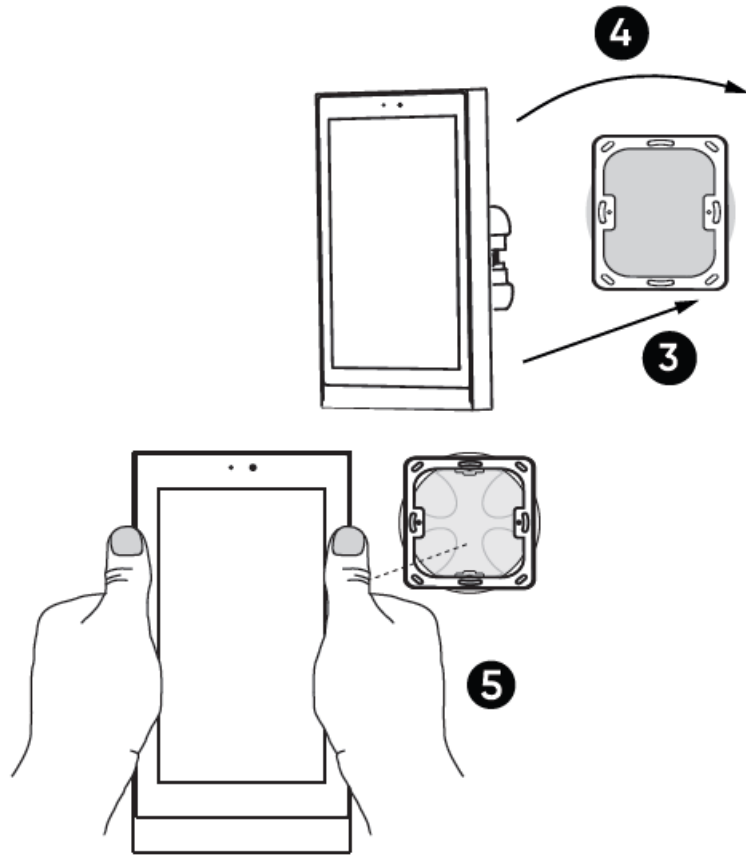
Do not overtighten the screw

2. Connect ethernet cable, digital input (if used), KNX cable and DC power cable to the device.

Check that polarities are correct.



3. Place over the lower clips
4. Attach the top clips



5. Press and place the device with both hands simultaneously on the right and left sides

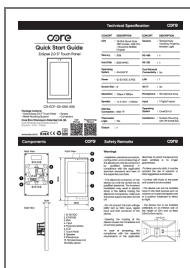
Pushing the device straight into the clips might damage

Commissioning

- Eclipse 2.0 5" Touch Panel is configured via the built-in web interface. Ethernet network interface is set to DHCP mode by default.
- Connect Eclipse 2.0 5" Touch Panel to a network that has a DHCP server via home or building network.
- Go to settings in Eclipse 2.0 5" Touch Panel user interface and then get IP address of Touch Panel. If there is no DHCP server on network, set IP address of Touch Panel manually. For this check programming manual.
- Enter IP address to web-browser, then enter username and password
- Default username: webAdmin
- Default password: wa1234
- For support in further steps, check the Programming Manual.

Care Bina Otamasyon Sistemleri Ltd. www.core.com.tr

Documents / Resources



[core Eclipse-2.0 Touch Panel](#) [pdf] User Guide
Eclipse-2.0, Eclipse-2.0 Touch Panel, Eclipse-2.0, Touch Panel, Panel

References

- [User Manual](#)

[Manuals+](#), [Privacy Policy](#)

This website is an independent publication and is neither affiliated with nor endorsed by any of the trademark owners. The "Bluetooth®" word mark and logos are registered trademarks owned by Bluetooth SIG, Inc. The "Wi-Fi®" word mark and logos are registered trademarks owned by the Wi-Fi Alliance. Any use of these marks on this website does not imply any affiliation with or endorsement.