



UCORBIT MB001 Tidbitser Guide

[Home](#) » [CORBIT](#) » UCORBIT MB001 Tidbitser Guide 

CORBIT

MB001 Tidbitser
User Guide



Contents

1 TEAM UP WITH CORBIT

2 In The Box

3 Tidbit's Bits

4 Connecting with Corbit

5 Explore Corbit's AI ENGINE

6 Documents / Resources

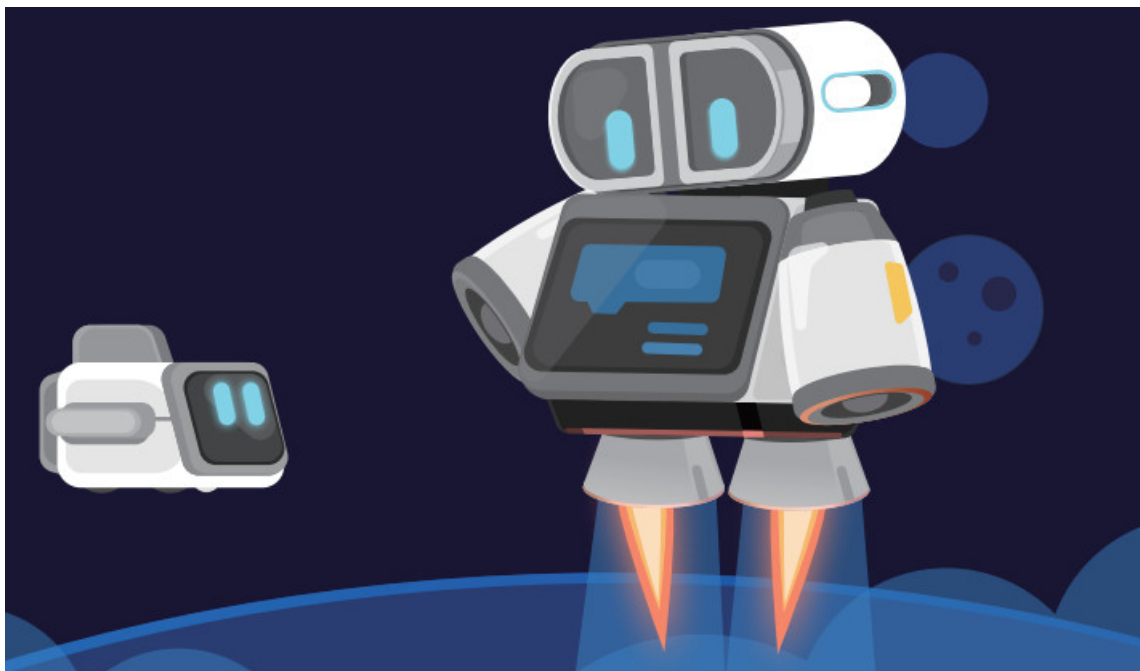
6.1 References

7 Related Posts

TEAM UP WITH CORBIT

Tidbit is Corbit's loyal companion.

If you want to play with Tidbit, Corbit has to be around!



Caution

1. The product is recommended for children over 6 years old.
2. DO NOT allow children under 3 years old to use the product.
3. Children using the product need adult supervision.
4. DO NOT disassemble, repair, or modify the product on your own, otherwise, malfunctions may occur.
5. Please use Corbit or the recommended power adapter (5V/1A) to charge the product.
6. The power adapter for the product is not a toy.
7. Misuse of the power adapter might result in an electric shock hazard.
8. Please shut down and disconnect the product from the external power supply before cleaning the product with liquid.
9. DO NOT connect the product to more than the recommended quantity of power supplies.
10. Check the cables, plugs, casing, and other components for any damage on a regular basis. Stop using the product immediately if any damage occurs and get it repaired.
11. ONLY connect the product to a Class II equipment with the following symbol.

12. DO NOT bridge the two charging dots at the bottom with conductive objects.
13. Please use the product on the floor to prevent it from falling and injured.
14. The wings of the product are small parts, so make sure it's properly stored.



Warning:

CHOKING HAZARD-Small part.

Not for children under 3 years old.

Children to use only under an adult's supervision.



DECLARATION OF CONFORMITY

Declaration of conformity Hereby, Makeblock Co., Ltd., declares that this product is in compliance with the essential requirements and other relevant provisions of Directive RED 2014/53/EU and the RoHS directive 2011/65/EU

FCC Radiation Exposure Statement

This equipment complies with FCC radiation exposure limits set forth for an uncontrolled environment. This equipment should be installed and operated with a minimum distance of 20cm between the radiator & your body.

FCC Statement

This device complies with Part 15 of the FCC Rules. Operation is subject to the following two conditions: (1) This device may not cause harmful interference, and (2) This device must accept any interference received, including interference that may cause undesired operation.

Warning: Changes or modifications not expressly approved by the party responsible for compliance could void the user's authority to operate the equipment.

NOTE: This equipment has been tested and found to comply with the limits for a Class B digital device, pursuant to Part 15 of the FCC Rules. These limits are designed to provide reasonable protection against harmful interference in a residential installation. This equipment generates uses and can radiate radio frequency energy and, if not installed and used in accordance with the instructions, may cause harmful interference to radio communications. However, there is no guarantee that interference will not occur in a particular installation. If this equipment does cause harmful interference to radio or television reception, which can be determined by turning the equipment off and on, the user is encouraged to try to correct the interference by one or more of the following measures:

- Reorient or relocate the receiving antenna.
- Increase the separation between the equipment and receiver.
- Connect the equipment into an outlet on a circuit different from that to which the receiver is connected.
- Consult the dealer or an experienced radio/TV technician for help.

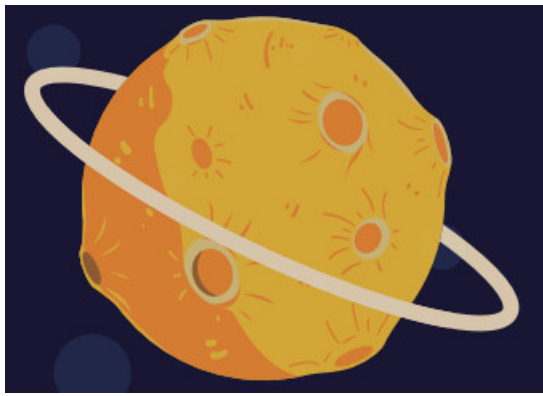
In The Box



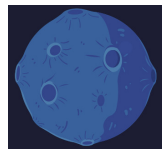
Tidbit x 1



Tidbit Care Guide x 1



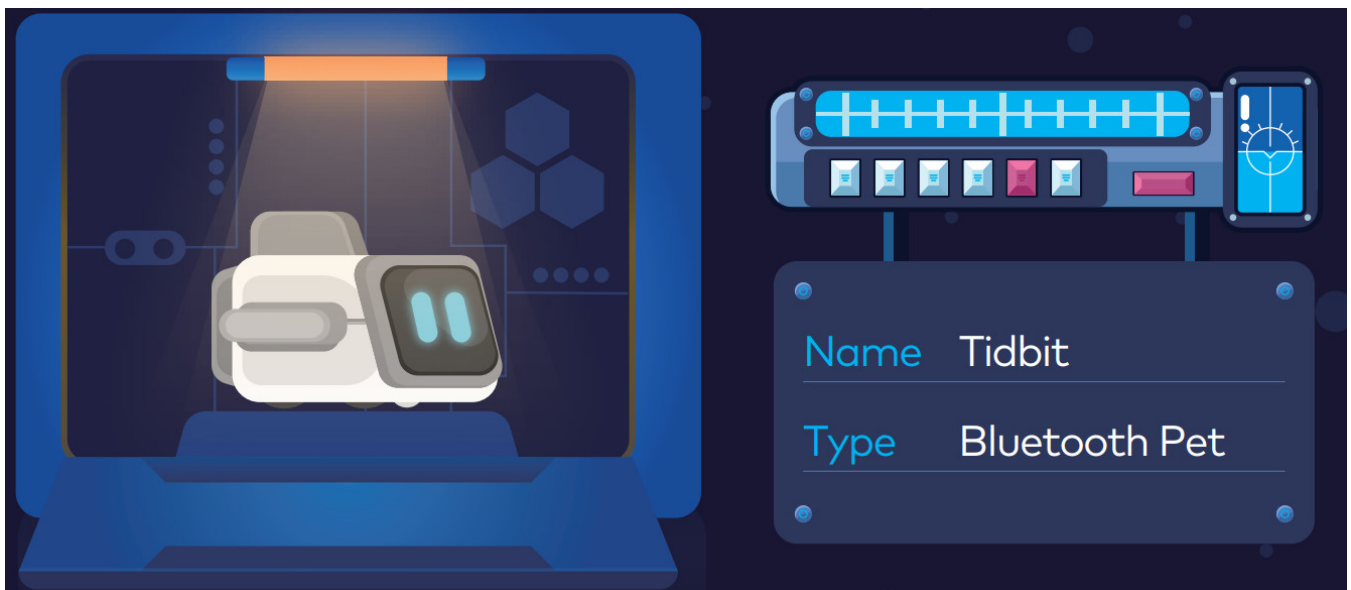
Dimensions	(H)66 x (W)80 x (D)77 mm/(H)2.6 x (W)3.2 x (D)3.0 inches
Weight	109g / 3.8oz
Power Input	5V 1A
Communication	Bluetooth
Battery	3.4Wh



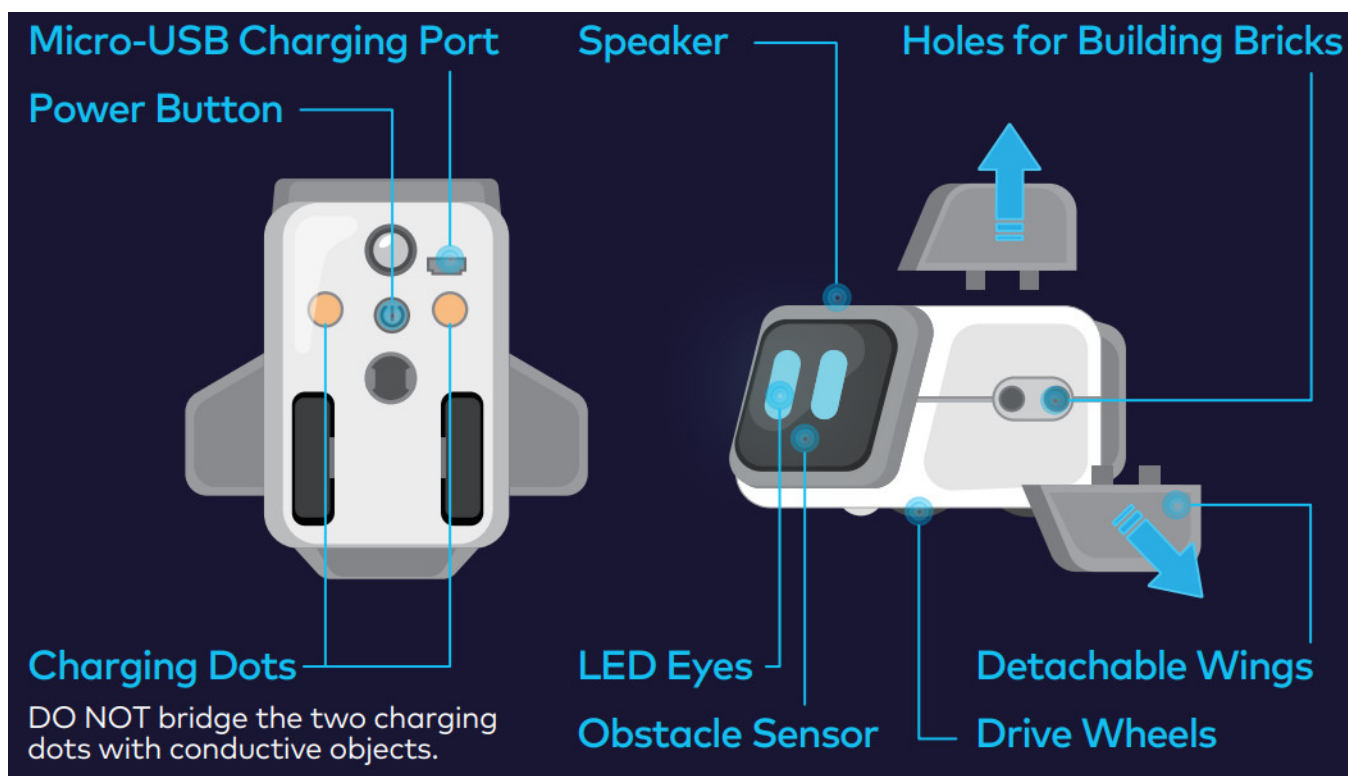
Makeblock Co., Ltd.

Address: 4th Floor, Building C3, Nanshan iPark, No.1001 Xueyuan Avenue, Nanshan District, Shenzhen, Guangdong Province, China

Technical support: support@makeblock.com
www.makeblock.com



Tidbit's Bits



Tidbit Tips

Power On/ Power Off

To turn Tidbit on/off press and hold his power button for two seconds.

If you don't pay attention to Tidbit for five minutes, Tidbit will take a nap.

Leave him for 20 minutes, and he will automatically power down.

Low Battery

If Tidbit needs recharging, his eyes will begin blinking red. If you don't charge him in time, he will automatically power down.

Give Tidbit Some Room

Tidbit loves room to roam. Give him some space on the floor, not on tablets or other high places, where he could fall.

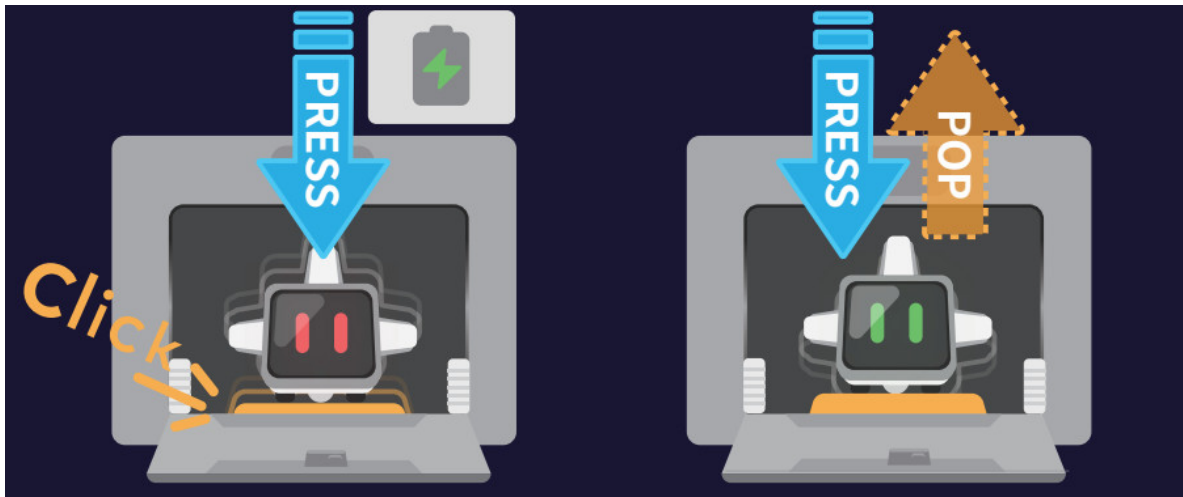
Tidbit loves to dodge obstacles, but he can see light things better than dark things, and easily gets distracted by sunlight.

Remember this when you're building your own Tidbit obstacle course!

Connecting with Corbit

Charging in Corbit's Hangar

1. Make sure Corbit is plugged in with a Power adapter, otherwise Tidbit cannot be charged.
2. Carefully place Tidbit face-out on the docking platform in Corbit's hangar, with his drive wheels in the grooves.
Then, press Tidbit down, locking him onto the platform.
3. Tidbit's eyes will blink red. This means he's charging.
4. When Tidbit is fully charged, his eyes will turn green.
5. Press Tidbit down, and the platform will pop up and unlock.



*

You can also use a Micro-USB cord to connect Corbit and 5V 1A Power adapter to charge him. (Micro-USB cord and Power adapter are not included)

Bluetooth Pairing With Corbit

- Power on Tidbit (or, if he's already on, press his power button once). Tidbit's eyes will blink blue, and he'll wait for Corbit to connect.
- You can connect to Tidbit by tapping the search icon on Corbit's "AI ENGINE" and selecting your Tidbit to connect. After the first connection, you can also put Tidbit close to Corbit, and they will automatically connect.
- Tidbit's eyes will glow blue for two seconds when connected.
- Corbit can connect to a maximum of 7 Tidbits.
- If you want to stream to Tidbit, please find Tidbit on Corbit's "Connected" page, and tap his speaker icon to start streaming audio. Only one Tidbit can stream at a time.

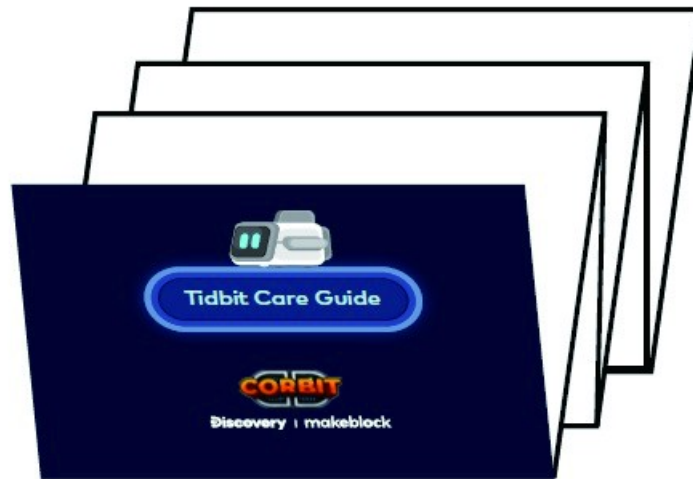
Explore Corbit's AI ENGINE

Got Tidbit all charged up and ready to go? Try using Tidbit's speaker, for some streaming on wheels. Then, take Tidbit for a test drive around the house, and watch him dodge obstacles. Or, get coding with Corbit's programmable pal.

No matter how you want to play with Tidbit, it's all in Corbit's AI ENGINE. Enter the AI ENGINE from the Corbit homepage.

Can't decide? Try roaming mode. Just press Tidbit's power button twice. Tidbit's eyes will glow white for two seconds. That means his sensors are sniffing and he's ready to start exploring!

Keep checking back in Corbit's AI ENGINE for new Tidbit features!



Documents / Resources

	<p>CORBIT MB001 Tidbit [pdf] User Guide MDCP00101H, 2AH9Q-MDCP00101H, 2AH9QMDCP00101H, MB001 Tidbit, MB001, Tidbit</p>
--	---

References

- 
[Robot Kits & STEM Toys for K-12 Schools and Home Education](#)
