



Coral Vision Wireless Apple CarPlay Dashboard Console Instruction Manual

[Home](#) » [Coral Vision](#) » Coral Vision Wireless Apple CarPlay Dashboard Console Instruction Manual 

Contents

- [1 Coral Vision Wireless Apple CarPlay Dashboard Console](#)
- [2 Suction Cup Stand Assmbly Instruction](#)
- [3 The method of sound output](#)
- [4 Documents / Resources](#)
- [5 Related Posts](#)

Goral Vision

Coral Vision Wireless Apple CarPlay Dashboard Console



Suction Cup Stand Assembly Instruction

Step 1 : Take out CarPlay host/ Suction Cup stand/ Glass plate
Please check if there are the above-mentioned items in the box



Step 2: Check the stand and the back of the host
check the mortise of the host and the tenon of the stand. Align the mortise, then assemble them and make a 'click' sound (please refer Step 3 to assemble it)



Step 3: How to easily assemble

Please refer to Figure 1 and Figure 2 to align and combine the stand and the host. It makes the combination easily.

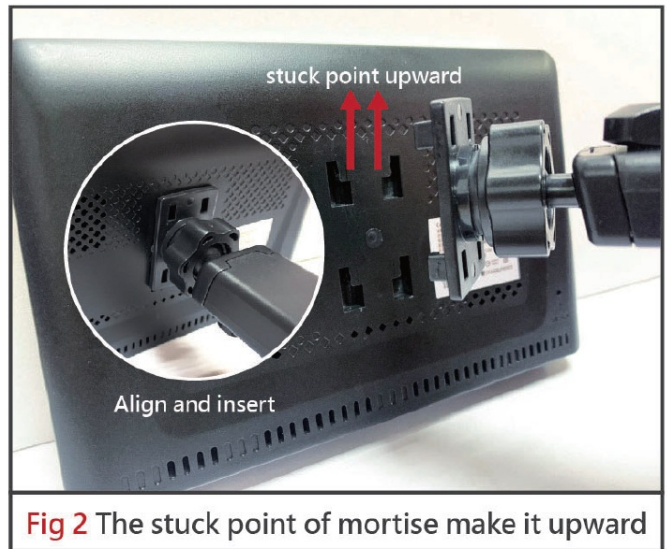
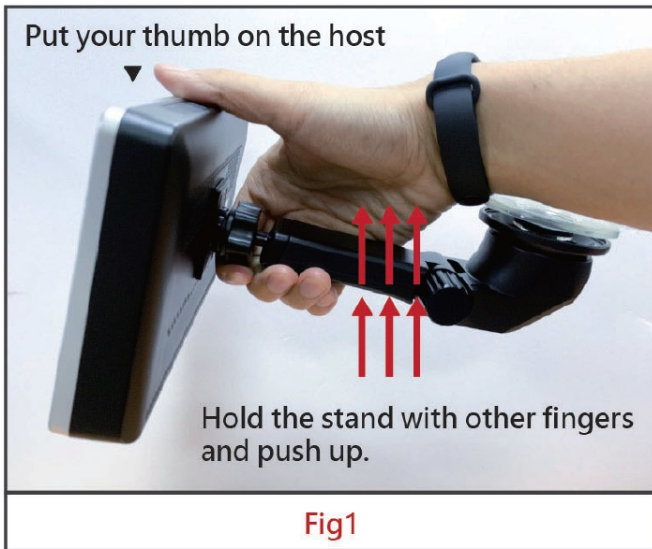
Note: there must be a 'click' sound to confirm the assembly completed.

The host may fall while using it if there is no 'click' sound.

Suction cup direction can be turned after assemble. And the direction depends on your install position (windshield or console). Please use the glass plate if you install the host on the console.

(It's a bit tight during the first assembly. Remind you to assemble them with two hands.)

(When you remove the stand, the gesture is the same as Fig.1, just upside down the host.)



Step 4: Install the suction cup (two stage button)

When installing the suction cup stand, please note after the suction cup attached to the glass, be sure to press the button to the second stage. The host may fall and damage if the suction cup is not fully buckled.



Fig.1 Non-buckle status

Fig.2 Push the button down

Fig.3 The fully buckled status

Step 5: Installation position samples



The method of sound output

Internal 3W high-quality speaker: It is excellent for navigation, phone, and voice messages.

(The internal speaker output of the other navigators is 0.5~ 1 W.)

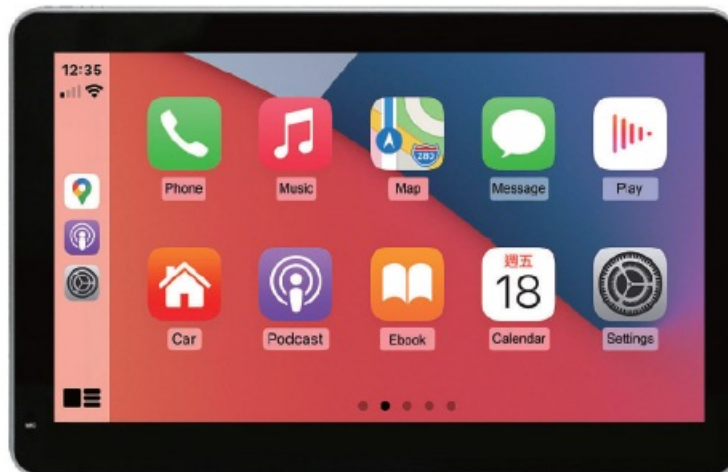
FM transmitter: This is a simple way to output audio from a car stereo. Due to the local FM radio channel allocation of various regions, suggest you use an empty channel to avoid noise and interference

Audio Aux out: To get the perfect CarPlay sound output from the car stereo, We suggest using 'Audio Aux out'.

Please check the connection below.



Connect to
AUDIO jack




Connect the audio out of the host to the
car stereo by audio cable



Note Please use TRS type audio cable (3 contacts).



Documents / Resources

	Coral Vision Wireless Apple CarPlay Dashboard Console [pdf] Instruction Manual Wireless Apple CarPlay Dashboard Console
---	--