



# COPELAND E2 Controller Refrigeration Control System User Guide

[Home](#) » [Copeland](#) » COPELAND E2 Controller Refrigeration Control System User Guide 

## COPELAND

INSTALLATION INSTRUCTIONS  
Loading Description (.dsc) Files  
Into The E2



## Contents

### 1 Overview

### 2 From UltraSite

### 3 How to Find the Device Version Number




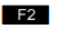
### 4 Documents / Resources

#### 4.1 References

## Overview

This document will guide you through setting up and commissioning devices with .dsc files in the E2 controller.

### How to determine when a description file is needed From the E2 Screen

1. Press  (System Configuration),  (Network Setup), .
2. Press  (NEXT TAB) to go to the C3: ECT tab. If the device and version appear in the list on the screen, the device is “native” in the E2 and a description file does not need to be loaded. If the device and version do not appear in the list, go to Step 1 and load the appropriate description file.

### From UltraSite

1. Select the E2 from the navigation tree to which you will add the device (in Online or Offline mode) and right-click on the E2.
2. Select Device Setup > Network/Board Setup > Add I/O, and go to the ECT (Equipment Connectivity) tab. If the device and version appear in the list on the screen, the device is “native” in the E2 and a description file does not need to be loaded. If the device and version do not appear in the list, go to Step 1 and load the appropriate description file.

### How to Find the Device Version Number

In order for the device commissioning to work correctly, the version of the device must match the version selected in the E2 application list.

If they do not match, a Type Mismatch error will occur. If you are unsure of your device’s version number, it can be found on the device label.

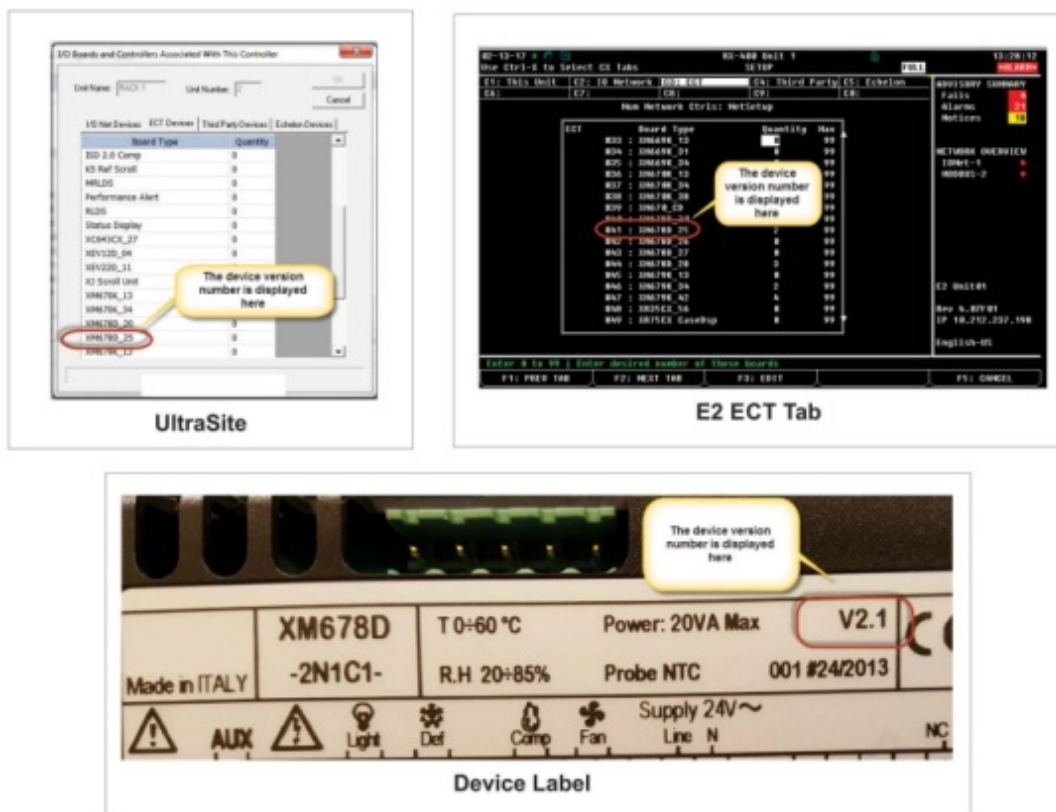


Figure 1 - Identifying Device Version Numbers

## STEP 1: Upload the Description File (xxx-xxxx) to the E2 Controller

1. Select the controller in UltraSite.
2. Right-click the controller and select Upload Description File:

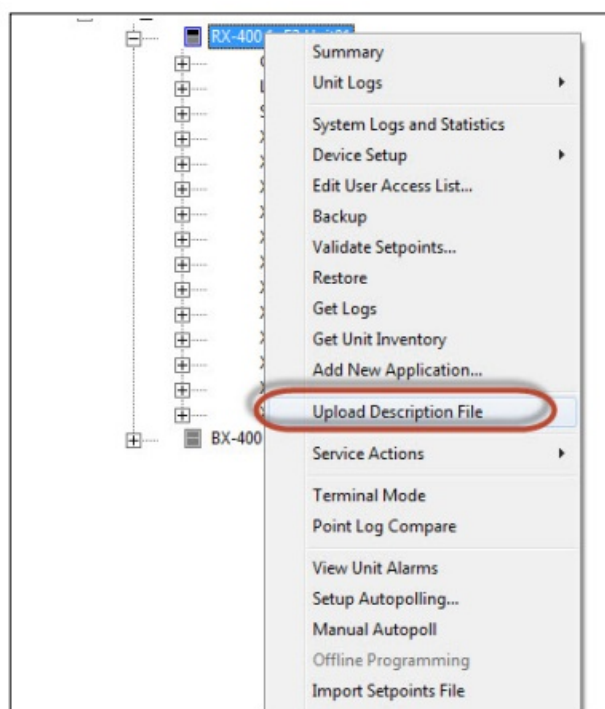
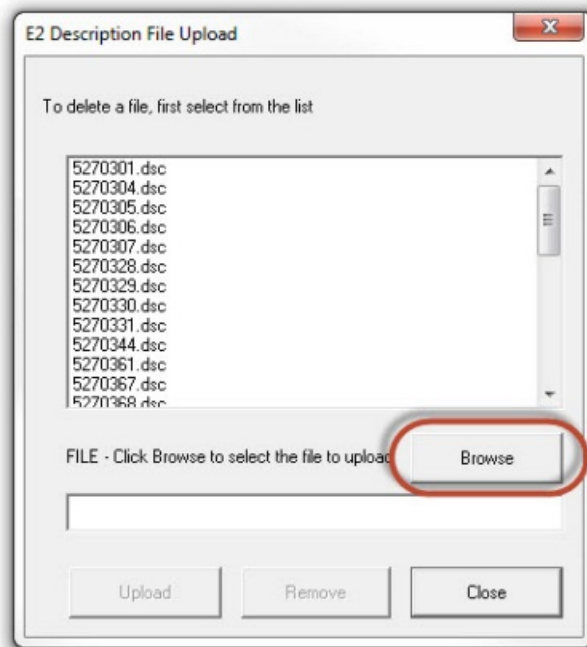


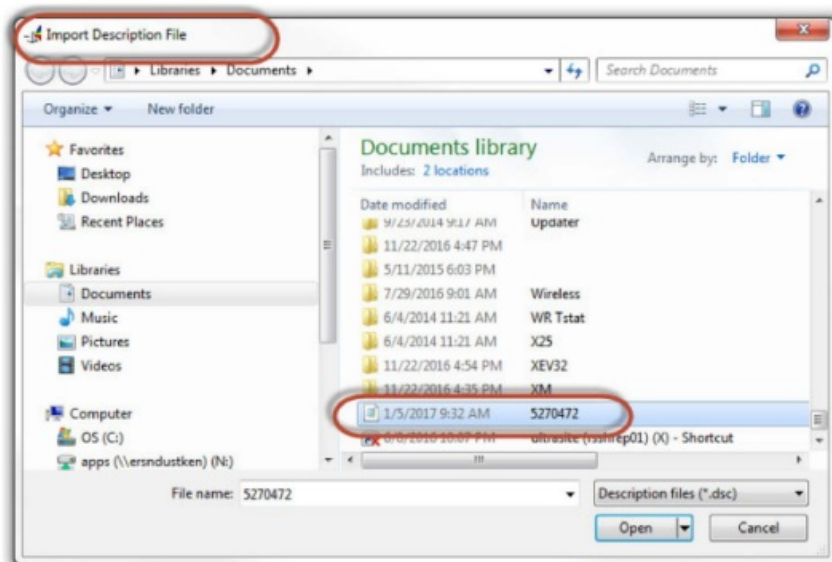
Figure 2 - Upload .dsc File

3. Select Browse to go to location where the description (.dsc) file was saved:



*Figure 3 - Locate .dsc File*

4. Select the desired description (.dsc) file and click Open:



*Figure 4 - Select .dsc File and Import*

5. Right-click the controller. Under Service Actions, select Reset Unit to reboot. The controller must be rebooted to see the description(.dsc) file:

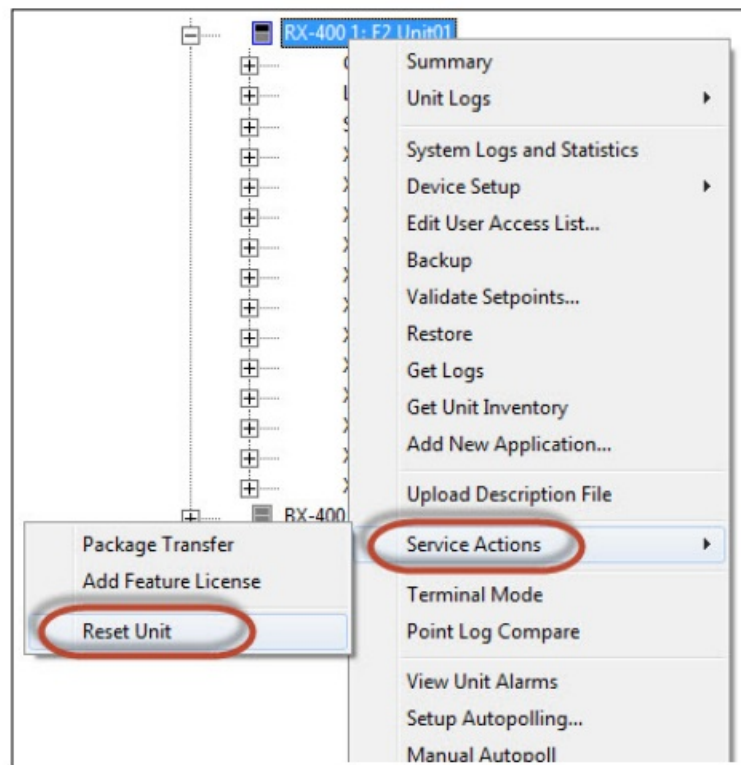


Figure 5 - Reboot the Controller

- After the controller reboots, in the navigation tree, go to Device Setup > Network Board Setup to add the device:

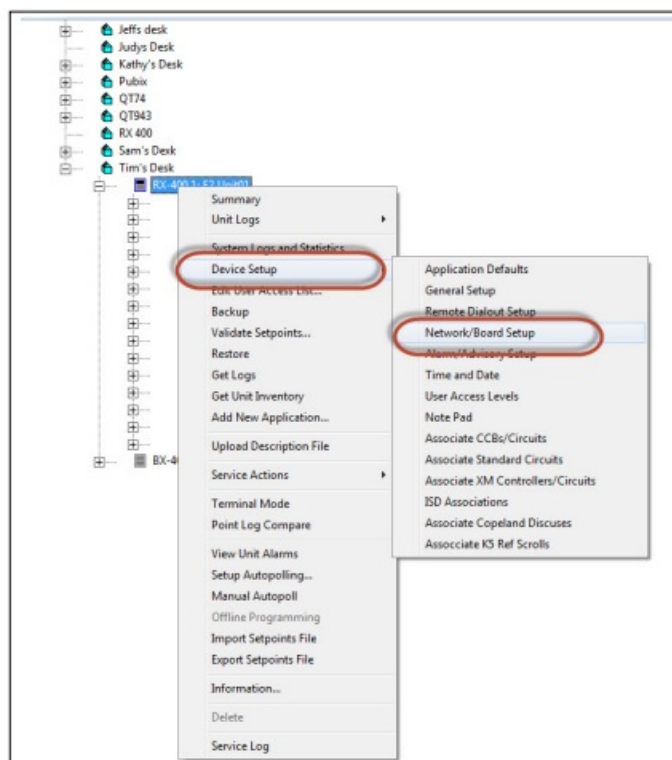


Figure 6 - Network/Board Setup Controller

- Select Add Ctr/IO to add a device:

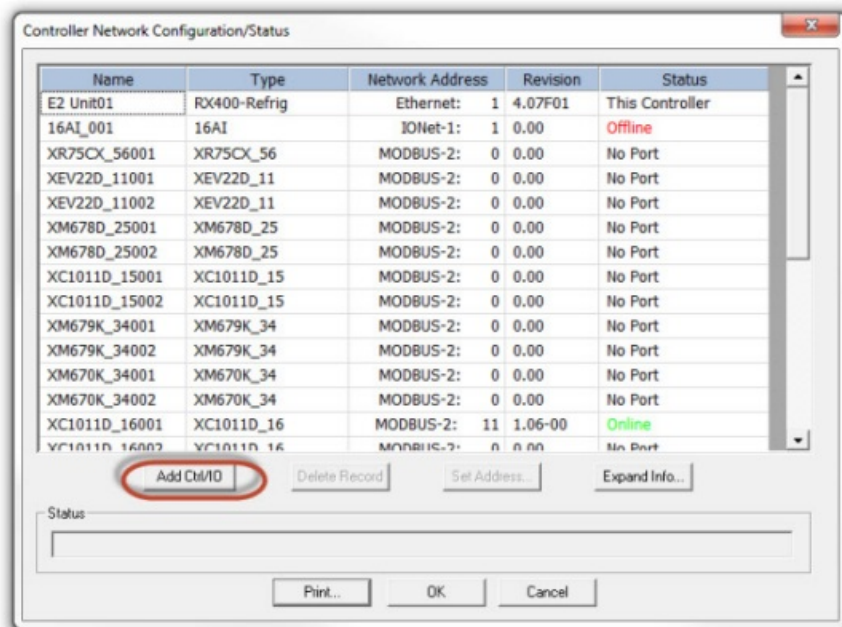


Figure 7 - Adding the Device

8. Select the ECT Devices tab and select the desired device. Enter the number of devices and set up the COM port address and commission the devices as usual:

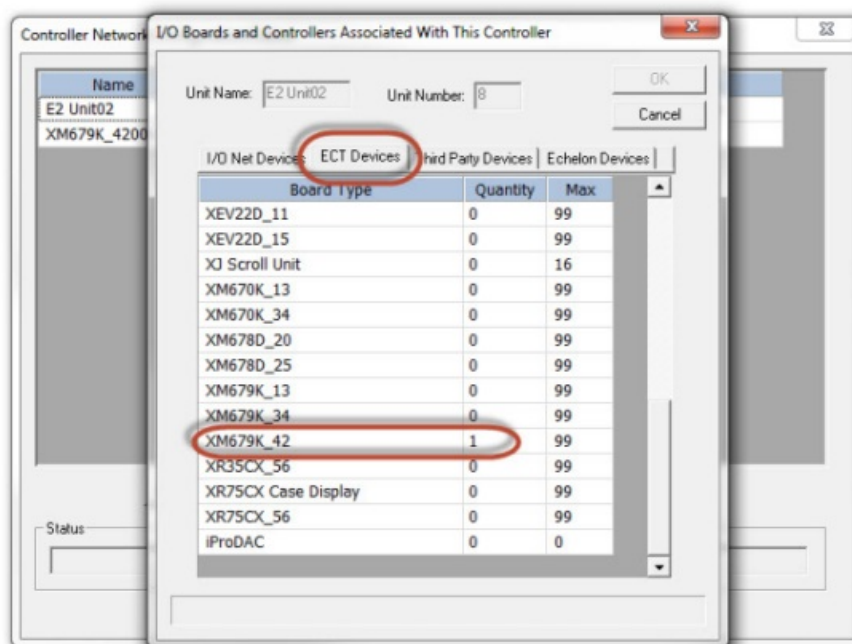


Figure 8 - ECT Tab - Add Number of Devices



<http://www.copeland.com/en-us/products/controls-monitoring-systems/facility-controls-electronics/facility-and-system-controls/e2-facility-management-system>

Visit our website at [copeland.com/en-us/products/controls-monitoring-systems](http://www.copeland.com/en-us/products/controls-monitoring-systems) for the latest technical documentation and updates.

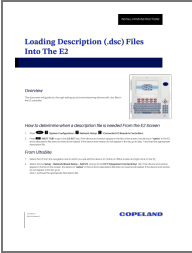
For Technical Support call [833-409-7505](tel:833-409-7505) or email [ColdChain.TechnicalServices@Copeland.com](mailto:ColdChain.TechnicalServices@Copeland.com)



026-4964 R3

The contents of this publication are presented for informational purposes only and they are not to be construed as warranties or guarantees, express or implied, regarding the products or services described herein or their use or applicability. Copeland reserves the right to modify the designs or specifications of such products at any time without notice. Responsibility for proper selection, use and maintenance of any product remains solely with the purchaser and end-user. ©2024 Copeland is a trademark of Copeland LP.

Documents / Resources

|   |   |
|---|---|
|  | <p><a href="#">COPELAND E2 Controller Refrigeration Control System</a> [pdf] User Guide<br/>E2 Controller Refrigeration Control System, E2, Controller Refrigeration Control System, Refrigeration Control System, Control System, System</p> |
|---|---|

References

- [User Manual](#)

[Manuals+](#), [Privacy Policy](#)

This website is an independent publication and is neither affiliated with nor endorsed by any of the trademark owners. The "Bluetooth®" word mark and logos are registered trademarks owned by Bluetooth SIG, Inc. The "Wi-Fi®" word mark and logos are registered trademarks owned by the Wi-Fi Alliance. Any use of these marks on this website does not imply any affiliation with or endorsement.