

COOSPO
COOSPO CS500
Cycling Computer



COOSPO CS500 Cycling Computer User Manual

[Home](#) » [COOSPO](#) » COOSPO CS500 Cycling Computer User Manual 

Contents

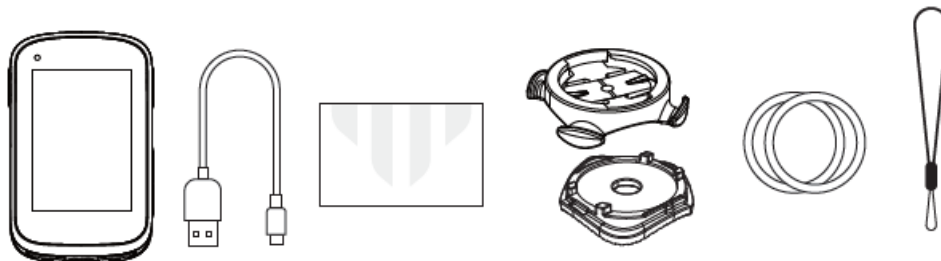
- [1 COOSPO CS500 Cycling Computer](#)
- [2 Product Accessories](#)
- [3 How to Install](#)
- [4 Button Function](#)
- [5 Connection & Installation](#)
- [6 Add Sensor Management](#)
- [7 Check Data](#)
- [8 Device Updates](#)
- [9 System Settings](#)
- [10 FCC statement](#)
- [11 Documents / Resources](#)
 - [11.1 References](#)
- [12 Related Posts](#)

COOSPO

COOSPO CS500 Cycling Computer

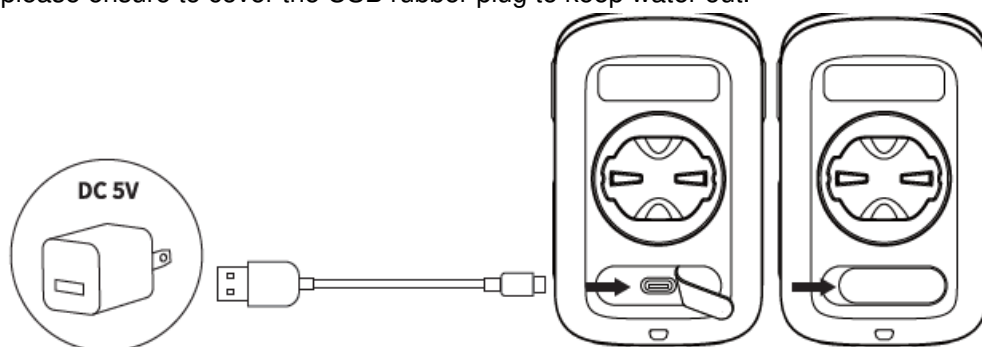


Product Accessories

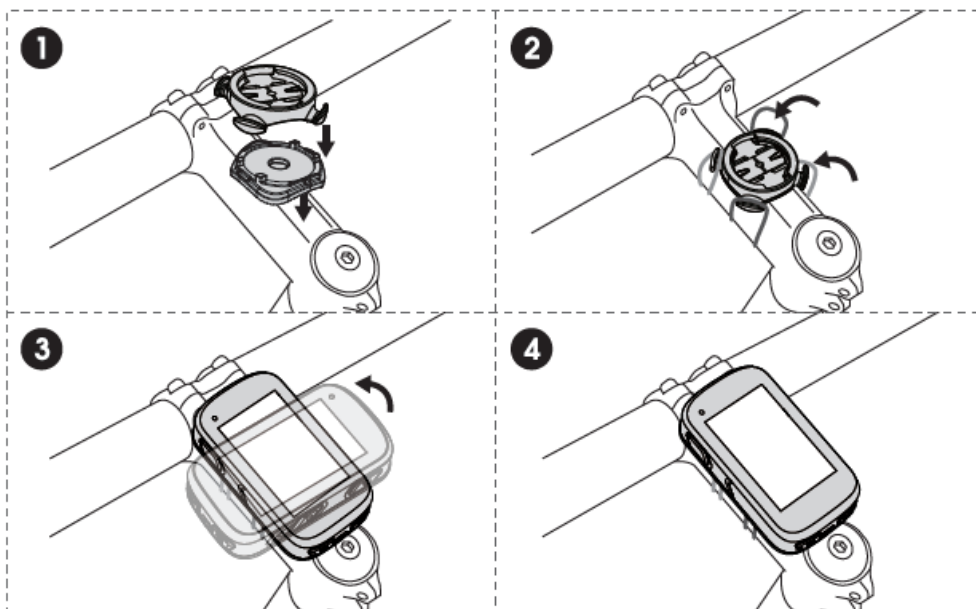


Charging

Using a fast power adapter to charge the bike computer is not advisable as it may cause damage to the battery. After charging, please ensure to cover the USB rubber plug to keep water out.



How to Install



Button Function



Button	Function
①	Power on/off: Short Press - On Long Press - Off Back: Short Press
②	Menu/Confirm
③④	Select
⑤	Homepage shortcut to history; Lap
⑥	Homepage shortcut to ride

Initial Settings

1. For the first time use, please charge the device.

When first using the device, please select your language . After confirming your language, you will be taken to the device's Homepage

2. To change the language, go to Home → Setting → System → Language.

Status Page

Connect to CoopoRide APP successfully, displays .*.



GPS Off	GPS Signal Intensity	Battery	Start
Stop	Auto-Pause	Indoor	Outdoor
Ride Mode: Press to switch the current ride mode; Sensor connected: the sensor icon displayed; Sensor added but not connected: sensor icon flashing; Sensor not added: no sensor icon displayed.			
Heart Rate Monitor	Speed Sensor	Cadence Sensor	Power Meter
Bike Trainer	ESC	Di2	Radar Sensor
	Brightness: Press to adjust the current backlight level; Auto: Brightness adjusts automatically based on ambient light conditions.		
Speed/Cadence Sensor			
	Temperature: May differ from actual ambient temperature.		
	Elevation: factory calibrated, default auto-calibration when GPS is turned on.		

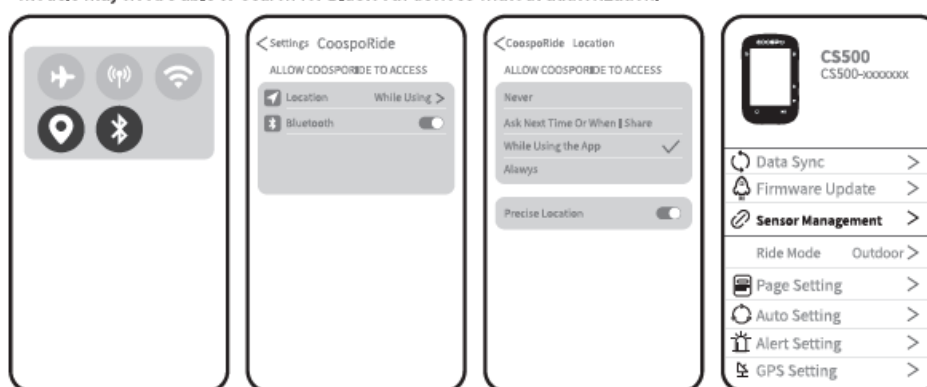
Connection & Installation

Connect to CoospoRide

Please do not pair the bike computer at your phone's Bluetooth settings.

Please download the CoospoRide APP in Apple Store or Google Play; Enable the Bluetooth and location permissions on your phone; Open CoospoRide APP>Bike Computer, choose the model of your bike computer and click on the device ID to connect it.

Please ensure that Bluetooth and location permissions are enabled for the app before connecting. Some phone models may not be able to search for Bluetooth devices without authorization.



Add Sensor Management

The device can pair with the Bluetooth or ANT+ sensors. Check sensor compatibility list for more info:
www.coospo.com/faq

Add Sensors in Bike Computer

Setting > Sensor > Add Sensor, or Status Page > Sensor > Add Sensor;

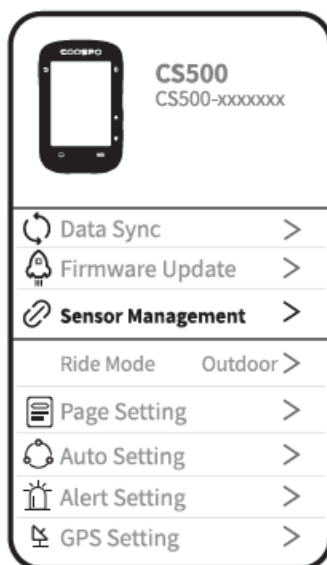
Press to select sensor type, press to start searching;

Press to choose the sensor ID, press to add a sensor. • After adding speed/power sensors, check the connected sensors and click to set the wheel circumference/calibrate the power meter.



Add Sensors by APP

Open CoospoRide APP > Device > Add Sensor, search the sensor you want to add, choose the device ID to add the sensor.



Start a Ride GPS Positioning!

1. For the initial satellite positioning, please wait 30-90 seconds in an open outdoor area. The date and time of the device will be set automatically after the initial positioning is successful.
2. Please ensure that the bike computer remains stationary while it acquires the GPS signal for the best satellite reception.

Start a Ride

Press ▲▼ to start the home page to select Cycling, press ↻ to enter the cycling page; Or press |⏏| from any page to enter the cycling page, then press ▶|| to start a ride;
Press ▲▼ at the cycling page to change the data pages you want to display.

Function Menu:


Pressing ⏏ on the cycling page accesses the ride function menu for adjusting and setting various functions within the current ride mode.

Pages & Fields:




You can customize the page layout, data formatting, and specific data types displayed on your device, or customize all these settings on the CoospoRide APP.

Press ↻ to return to the cycling page after customizing to see the updated layout.

Lap:

Pressing  during a ride will start to record a new lap. This function allows you to analyze and compare performance of different data segments. You can also set up automatic segmentation rules: e.g. distance, time.


Pause & Save

When  All is on, the ride recording is paused. You can pause the ride record by pressing  during the ride, and then press  again to continue the ride. In the Cycling Menu, select Save to end and save the activity.



Check Data

History

Press  on the home page. Home Page > Setting > History > History Data 2. You can review the saved data here.

Sync data

After connecting to CoospoRide APP, the data will be synchronized 3) to APP.




Device Updates

- APP Updates: Open the CoospoRide app and go to Device > Connected Device > Firmware Update. Click on Check for Updates and follow the guidelines to complete the device update.

Device Settings Ride Mode New

Mode: Select

- New Mode and press  to add up to five new ride modes.
- Each mode can be set separately.
- Delete Mode: New mode can be deleted. L The system default mode cannot be deleted.
- Alert Setting: Enable alerts and set a data threshold. When the data exceeds the threshold, the bike computer will display a pop-up window to alert you.
- Pages & Fields: Consistent with the pages and fields in the Cycling Pages > Functions Menu.
- Auto Settings: Auto Lap: Automatically count laps by distance/time/position. Auto Page Turning: Automatically display all pages by turns.
- Auto Start: Automatically start recording riding data without pressing the start button.
- Auto Pause: Automatically pause recording when the speed is below the value you set GPS: Set GPS Mode My Profile
- User Settings: Please make sure the profile is set correctly as it will affect the accuracy of the measurement data.
- Heart Rate Zone: If you know your current Max Heart Rate, please input that value. If not, you can use the default maximum heart rate formula (220-age).
- Power Zone: If you know your Max Functional Threshold Power, please enter and calculate your FTP automatically. If not, please refer to the system default value: 200. – 12

System Settings

- Backlight: Manual/auto backlight mode.
- Power Manage: Battery Saver Mode: Adjust GPS mode and backlight brightness to low power consumption mode.
- Auto Sleep: Device will enter sleep mode in 5 minutes without any operation. Auto Power Off: Device will power off in 10 minutes without any operation.
- Calibration: Elevation Calibration: Manually calibrate elevation data. Compass
- Calibration: Use compass calibration to get accurate navigation.
- Unit: Customize the unit of data.
- Tone: Key tone setting; alert tone setting. Time: Set the 12-hour or 24-hour clock. Set the time zone to correct the current time.
- Language: Set the Language.
- Data Overwrite: On: Automatically overwrites oldest data when device storage is insufficient. Off: Unable to save latest records when device storage is insufficient.

Make sure to regularly sync your history to the CoospoRide APP to record all of your ride data. Factory

- Reset: Restore
- All Settings: Restore settings and ride modes to the factory state, without deleting the ride data. Clear
- All Data: Restore settings and ride modes to the factory state, and delete all data
- About: Review device information, including device ID, hardware and software versions, and memory status.

USB Sync

- Use the USB cable to connect the bike computer to your PC
- Export the FIT: Export the FIT file from the “fit activity” folder
- Import Course: Copy the Courses to the “Courses” folder and will be recognized automatically.
- Contact us Website: www.coospo.com
- E-mail: support@coospo.com

Attention

The information contained in this manual is for reference only. The product described above may be subject to alteration owing to the manufacturer’s continuing research and development plans without prior notice.

Disclaimer

The information contained in this manual just for reference. The product described above may be subject to alteration owing to the manufacturer’s continuing research and development plans, without making an announcement in advance. We shall not bare any legal responsibility for any direct or indirect, accidental or special damages, losses and expenses arising from or in connection with this manual or the contained product.

FCC statement

NOTE: This equipment has been tested and found to comply with the limits for a Class B digital device, pursuant to part 15 of the FCC Rules. These limits are designed to provide reasonable protection against harmful interference in a residential installation. This equipment generates, uses and can radiate radio frequency energy and, if not installed and used in accordance with the instructions, may cause harmful interference to radio communications. However, there is no guarantee that interference will not occur in a particular installation. If this equipment does cause harmful interference to radio or television reception, which can be determined by turning the equipment off and on, the user is encouraged to try to correct the interference by one or more of the following measures:

- Reorient or relocate the receiving antenna.
- Increase the separation between the equipment and receiver.
- Connect the equipment into an outlet on a circuit different from that to which the receiver is connected.
- Consult the dealer or an experienced radio/TV technician for help Changes or modifications not expressly approved by the party responsible for compliance could void the user’s authority to operate the equipment.

This device complies with Part 15 of the FCC Rules. Operation is subject to the following two conditions:

1. this device may not cause harmful interference, and
2. this device must accept any interference received, including interference that may cause undesired operation.

IC WARNING

This device contains licence-exempt transmitters)/receiver(s) that comply with Innovation, Science and Economic Development Canada’s licence-exempt RSS(s). Operation is subject to the following two conditions:

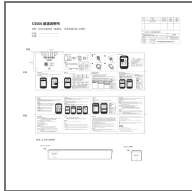
1. This device may not cause interference.
2. This device must accept any interference, including interference that may cause undesired operation of the device

Waste electrical products should not be disposed of with household waste. Please recycle where facilities exist.

Contact your local government or a retailer for additional information.

- Do not open or modify the product.
- Do not disassemble or attempt to service this product.
- This product is safe under normal and reasonably foreseeable operating conditions.
- If product is operating improperly, call COOSPO support.
- Product must be returned to the manufacturer for any service or repair.

Documents / Resources



[COOSPO CS500 Cycling Computer](#) [pdf] User Manual
CS500 Cycling Computer, CS500, Cycling Computer, Computer

References

- [User Manual](#)

Manuals+, Privacy Policy

This website is an independent publication and is neither affiliated with nor endorsed by any of the trademark owners. The "Bluetooth®" word mark and logos are registered trademarks owned by Bluetooth SIG, Inc. The "Wi-Fi®" word mark and logos are registered trademarks owned by the Wi-Fi Alliance. Any use of these marks on this website does not imply any affiliation with or endorsement.