



## Contents [ [hide](#) ]

- [1 COOSPO BK467 Cycling Speed Cadence Sensor](#)
- [2 Specifications](#)
- [3 Standard Accessories](#)
- [4 Function and Operation](#)
- [5 Installation](#)
- [6 Documents / Resources](#)
  - [6.1 References](#)



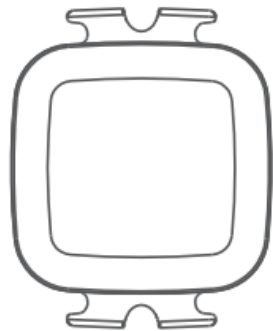
## COOSPO BK467 Cycling Speed Cadence Sensor



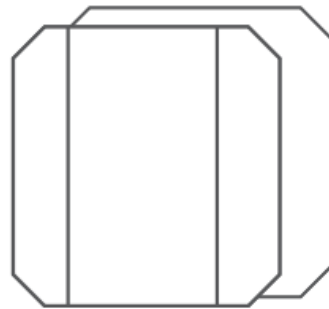
## Specifications

- **Weight** 9.5 g
- **Battery Life:** 300 hours
- **Battery Type** CR2032 220mAh
- **Waterproof** IP67
- **Wireless** Bluetooth & ANT+
- **Size** 41 x 34 x 10 mm
- **Max Speed** 120 km/h
- **Max Cadence** 300 rpm
- **Working Temperature** 100C °C 500C
- **Color** Black

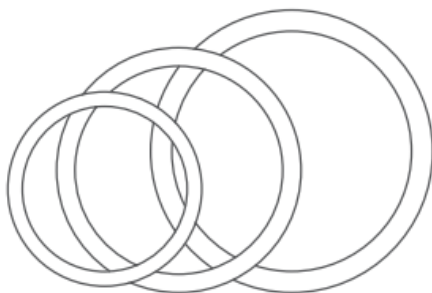
## Standard Accessories



Speed / Cadence  
Sensor x 1



Rubber Mat  
(Flat x 1, Curved x 1)



Band  
(Large x 2, Medium x 2,  
Small x 2)



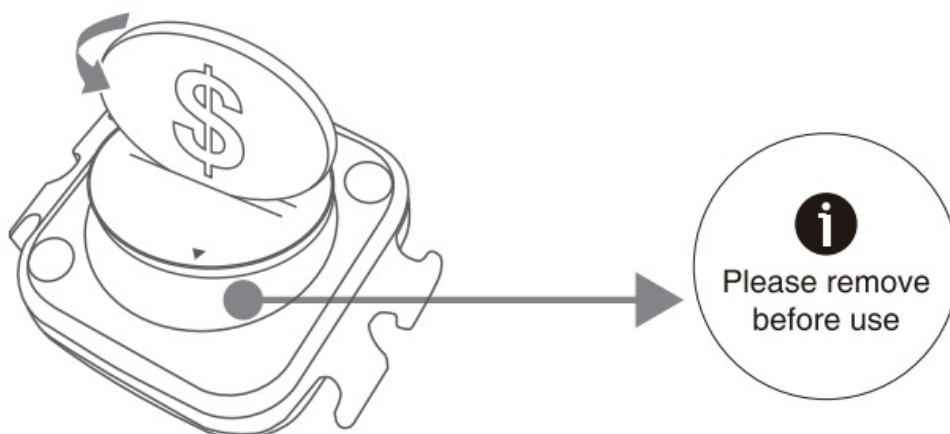
User Manual x 1

## Product Introduction

BK467 measures speed or cadence in real time and it sends speed or cadence data to app or bike computer. This user manual will help you to use the product better, please

keep it for reference.

## Remove the Insulation Sheet



1. Twist the battery cover with a coin in the OPEN direction, open the battery cover, and remove the battery.
2. Take out the insulating sheet

## Function and Operation

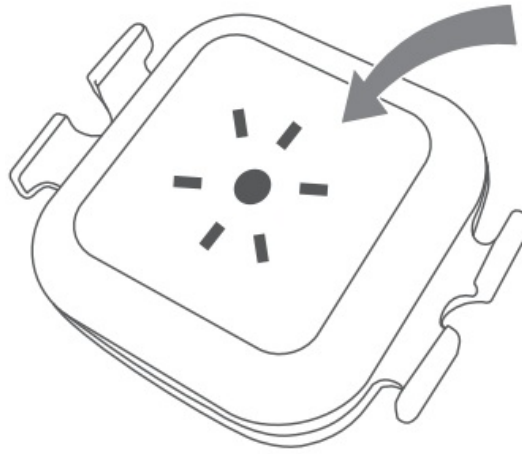
BK467 has speed mode and cadence mode. You can switch the mode by rebooting.

### Mode switching

- Twist the battery cover with a coin in OPEN direction, open the battery cover, remove the battery and install it again, after that, twist the battery cover in CLOSE direction, close the battery cover.



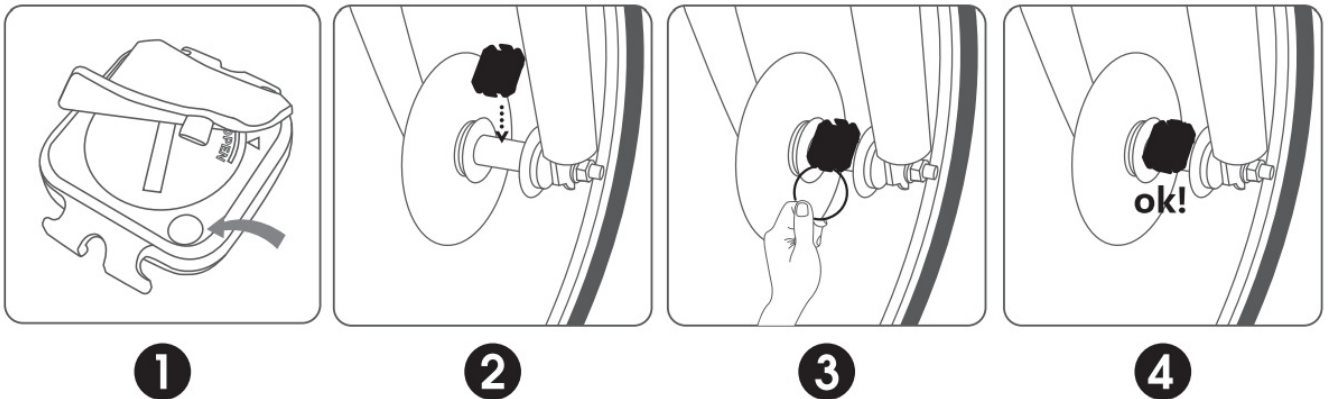
- After the battery installed, there will be a light on. Red light indicates speed mode, and blue light indicates cadence mode.



## Installation

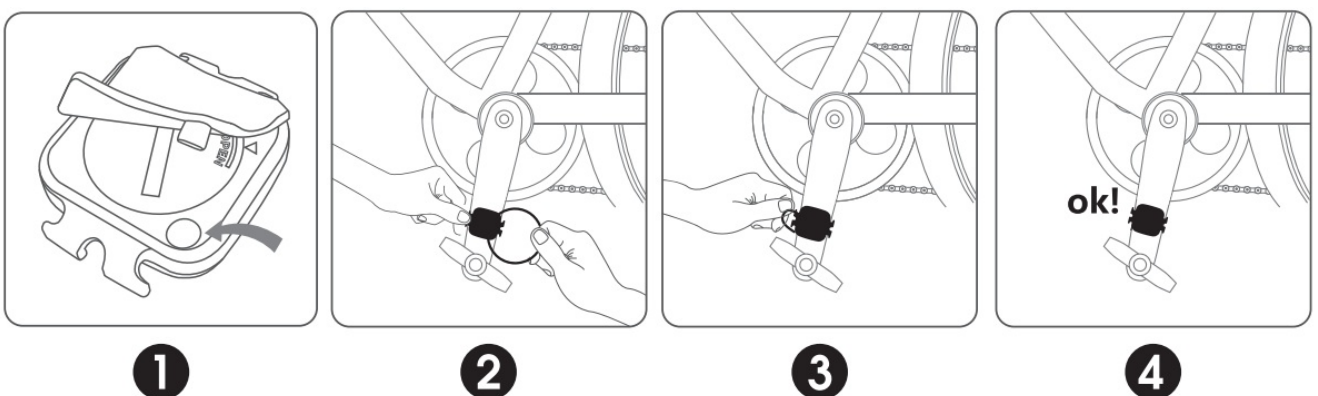
### • Installation for speed mode

Buckle the curved rubber mat onto the back of the sensor, then bind the sensor with the large rubber band onto the wheel axle.



### • Installation for cadence mode

Buckle the flat rubber mat onto the back of the sensor, then bind the sensor with the small rubber band onto the pedal crank.



## Applicable Smart Phones

 IOS 7.0 or above, iPhone 4s model or above

 Android 4.3 or above with Bluetooth 4.0

## Compatible Apps

CoospoRide, Wahoo, Openrider, Zwift, MAP MY RIDE+, or other Apps with speed/cadence feature.

## Disclaimer

- The information contained in this manual just for reference only. The product described above may be subject to alteration owing to the manufacturer's continuing research and development plans, without announcing in advance.
- We shall not make any statement or warranty about this manual.

## FCC statement

**NOTE:** This equipment has been tested and found to comply with the limits for a Class B digital device, under part 15 of the FCC Rules. These limits are designed to provide reasonable protection against harmful interference in a residential installation. This equipment generates, uses, and can radiate radio frequency energy and, if not installed and used according to the instructions, may cause harmful interference to radio communications. However, there is no guarantee that interference will not occur in a particular installation. If this equipment does cause harmful interference to radio or television reception, which can be determined by turning the equipment off and on, the user is encouraged to try to correct the interference by one or more of the following measures:

- Reorient or relocate the receiving antenna.
- Increase the separation between the equipment and receiver.
- Connect the equipment to an outlet on a circuit different from that to which the receiver is connected.
- Consult the dealer or an experienced radio/ TV technician for help

Changes or modifications not expressly approved by the party responsible for compliance could void the user's authority to operate the equipment. This device complies with Part 15 of the FCC Rules. Operation is subject to the following two conditions:

1. This device may not cause harmful interference, and

2. this device must accept any interference received, including interference that may cause undesired operation.

## **Disposal**

Waste electrical products should not be disposed of with household waste. Please recycle where facilities exist. Contact your local government or a retailer for additional information.

- Do not open or modify the product.
- Do not disassemble or attempt to service this product.
- This product is safe under normal and reasonably foreseeable operating conditions.
- If the product is operating improperly, call COOSPO support.
- The product must be returned to the manufacturer for any service or repair.


## **Battery Statement**

### **WARNING**

- **INGESTION HAZARD:** This product contains a button cell or coin battery.
- **DEATH** or serious injury can occur if ingested.
- A swallowed button cell or coin battery can cause Internal Chemical Burns in as little as 2 hours.
- **KEEP** new and used batteries **OUT OF REACH** of **CHILDREN**
- Seek immediate medical attention if a battery is suspected to be swallowed or inserted into any part of the body.
- Remove and immediately recycle or dispose of used batteries according to local regulations and keep away from children, Do **NOT** dispose of batteries in household trash or incinerate.
- Even used batteries may cause severe injury or death.
- Call a local poison control center for treatment information.
- **Compatible battery type:** CR2032
- **Nominal battery voltage:** 3V
- Do not force discharge, recharge, disassemble, heat above 450C or incinerate. Doing so may result in injury due to venting, leakage or explosion resulting in chemical burns.

- Ensure the batteries are installed correctly according to polarity (+ and -).
- Do not mix old and new batteries, different brands or types of batteries, such as alkaline, carbon-zinc, or rechargeable batteries.
- Remove and immediately recycle or dispose of batteries from equipment not used for an extended period of time according to local regulations.
- Always completely secure the battery compartment. If the battery compartment does not close securely, stop using the product, remove the batteries, and keep them away from children.

## Documents / Resources

	<a href="#">COOSPO BK467 Cycling Speed Cadence Sensor [pdf]</a> User Manual BK467, BK467 Cycling Speed Cadence Sensor, BK467, Cycling Speed C adence Sensor, Speed Cadence Sensor, Cadence Sensor
---	---

## References

- [User Manual](#)

COOSPO  
BK467, BK467 Cycling Speed Cadence Sensor, CADENCE SENSOR, COOSPO, Cycling Speed Cadence Sensor, Speed Cadence Sensor

## Leave a comment

Your email address will not be published. Required fields are marked \*

Comment \*

Name

Email

Website

☐ Save my name, email, and website in this browser for the next time I comment.

**Post Comment**

**Search:**

**Search**

[Manuals+](#) | [Upload](#) | [Deep Search](#) | [Privacy Policy](#) | [@manuals.plus](#) | [YouTube](#)

This website is an independent publication and is neither affiliated with nor endorsed by any of the trademark owners. The "Bluetooth®" word mark and logos are registered trademarks owned by Bluetooth SIG, Inc. The "Wi-Fi®" word mark and logos are registered trademarks owned by the Wi-Fi Alliance. Any use of these marks on this website does not imply any affiliation with or endorsement.