



COOPER Lighting Solutions PI 1 BLK Plug-In System Instructions

[Home](#) » [COOPER Lighting Solutions](#) » COOPER Lighting Solutions PI 1 BLK Plug-In System Instructions 

Contents

- [1 COOPER Lighting Solutions PI 1 BLK Plug-In System](#)
- [2 Product Information](#)
- [3 Product Usage Instructions](#)
- [4 ORDERING INFORMATION](#)
- [5 Availability](#)
- [6 Documents / Resources](#)
 - [6.1 References](#)

COOPER

COOPER Lighting Solutions PI 1 BLK Plug-In System



Product Information

The Plug-In (PI) System is a versatile lighting system that allows for easy installation and wiring of fixtures. It is available in 1, 2, or 3 circuit capabilities. Each PI section is factory wired to the ballast leads, and the wires are color-coded for easy identification.

The PI System is available in sections up to 8' in length, allowing for continuous row wiring by simply plugging the sections together. It is compatible with fixtures using Rapid Start, Slimline (430 MA), High Output (800 MA), or Power Groove (1500 MA) lamps up to twenty (20) amps per circuit.

The Plug-In System is available on various fixture series, including Industrials, Strips, IAF/ICF Series, SNF/SSF Series, DIF/DMF /DVMF Series, SNSM, SRA Series, I5/I8, RCG Series, and SM/SML. Wraps are available with the PI1 option only.

Ordering Information

When ordering the PI2 or PI3 System, it is necessary to specify the number of fixtures required for each circuit. The catalog numbers for each configuration are as follows:

- PI1 – Single Circuit Plug-In
- PI2 – Two Circuit Plug-In
- PI3 – Three Circuit Plug-In

For example, if you need 200 fixtures with the PI2 system, you would specify "200 SSF-296-120V-PI2".

Product Usage Instructions

To install and use the Plug-In System, follow these steps

1. Ensure that you have the correct number of PI sections for your desired circuit configuration.
2. Position the fixtures and align the PI sections to create a continuous row.
3. Plug the sections together, ensuring a secure connection.
4. Connect the ballast leads to the corresponding wires on the PI sections, following the color coding
 - **For PI1 – Single Circuit Plug-In:** Connect the black and white wires.
 - **For PI2 – Two Circuit Plug-In:** Connect the black and white wires for one circuit, and the blue and white wires for the other circuit.
 - **For PI3 – Three Circuit Plug-In:** Connect the black and white wires for one circuit, the blue and white wires for another circuit, and the red and white wires for the third circuit.
5. If necessary, connect the ground wire provided in the harness to the fixture body for grounding.
6. Repeat steps 2-5 for each additional section and fixture in the row.

For additional information or specific configurations, consult the product manual or visit the manufacturer's website at www.cooperlighting.com.

Description

The Plug-In System provides factory installed branch circuit wiring and plug-in connectors when row mounting fixtures. This labor and time saving option is designed to simplify fixture installation and wiring and allows fixtures to be installed quickly and easily. The PI system is available for fixture sections up to 8' in length for continuous row wiring by simply plugging the sections together. Each PI section is factory wired to the ballast leads and is color coded for easy circuit identification. Standard PI system harness contains no separate ground wire, with ground provided by the fixture body. An option to the system provides a separate ground wire in the harness where required.

ORDERING INFORMATION

Catalog Number Suffix	Number of Circuits	Circuit Wired to Ballast
PI 1 BLK	1	Black
PI 2 BLU	2	Blue
PI 2 BLK	2	Black
PI 3 RED	3	Red
PI 3 BLU	3	Blue
PI 3 BLK	3	Black

Catalog Numbering System

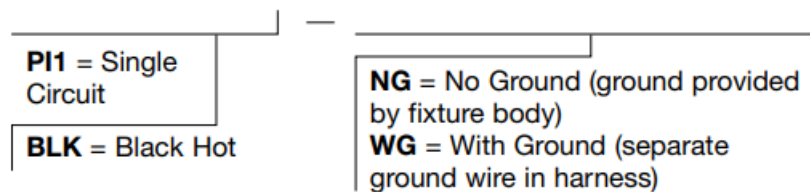
The PI System is available in sections up to 8' in length for continuous row wiring by simply plugging the sections together. Each PI section is factory wired to the ballast leads.

Color coding of wires is as follows

- **PI-1** = One (1) Circuit – Two (2) Wires: one black, one white
- **PI-2** = Two (2) Circuits – Three (3) Wires: one black, one blue, one white
- **PI-3** = Three (3) Circuits – Four (4) wires: one black, one blue, one red, one white

PI1 – Single Circuit Plug-In

- **SAMPLE NUMBER:** PI1BLK-WG



SAMPLE NUMBER: PI1BLK-WG

When ordering the PI2/PI3 System it is necessary to specify the number of fixtures required for each circuit.

Example: 200 (Fixture Quantity) SSF-296-120V-PI2

Requires

- 100 (Fixture Quantity) SSF-296-120V-PI2/BLK
- 100 (Fixture Quantity) SSF-296-120V-PI2/BLU
- SSF-296-PI1=Specify wire color of BLK for single circuit PIs since all the ballast leads will be wired to the black and white wires.
- SSF-296-PI2BLK=Two (2) circuit PI with ballast leads wired to black and white wires

- SSF-296-PI2BLU=Two (2) circuit PI with ballast leads wired to blue and white wires
- SSF-296-PI3RED=Three (3) circuit PI with ballast leads wired to red and white wires

The Plug-In System is available on fixtures using Rapid Start, Slimline (430 MA), High Output (800 MA), or Power Groove (1500 MA) lamps up to twenty (20) amps per circuit.

Available on the following fixture series

Industrials

- IAF/ICF Series
- DIF/DMF /DVMF Series I5/I8

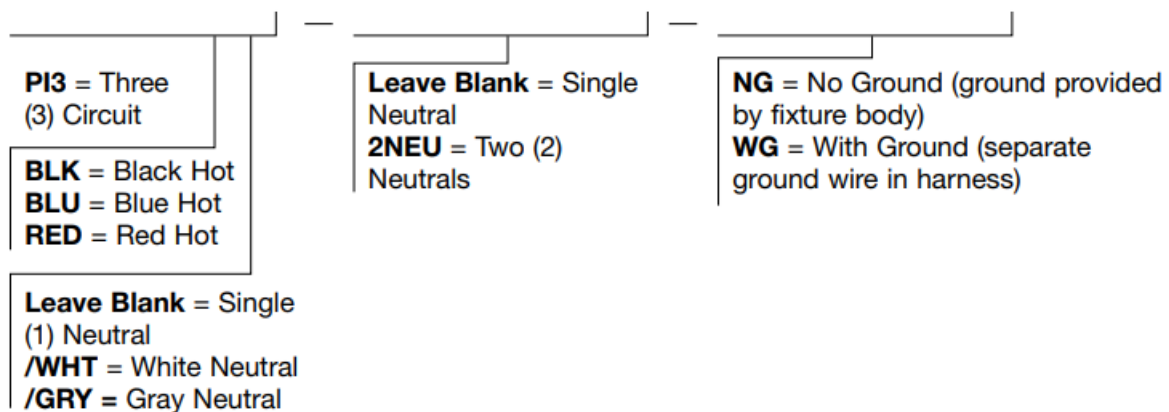
Strips

- SNF/SSF Series
- SNSM, SRA Series
- RCG Series
- SM/SML

Wraps are available with PI1 option only. For other fixture series availability consult factory.

PI2 – Two Circuit Plug-In

- **SAMPLE NUMBER:** PI2BLK-WG



PI3 – Three Circuit Plug-In

- **SAMPLE NUMBER:** PI3BLK-WG

SAMPLE NUMBER: PI2BLK-WG

PI2 = Two (2) Circuits	Leave Blank = Single (1) Neutral 2NEU = Two (2) Neutrals	NG = No Ground (ground provided by fixture body) WG = With Ground (separate ground wire in harness)
BLK = Black Hot BLU = Blue Hot		
Leave Blank = Single Neutral /WHT = White Neutral /GRY = Gray Neutral		

COOPER LIGHTING SOLUTIONS – METALUX®

Catalog #		Type	
Project			
Comments		Date	
Prepared by			

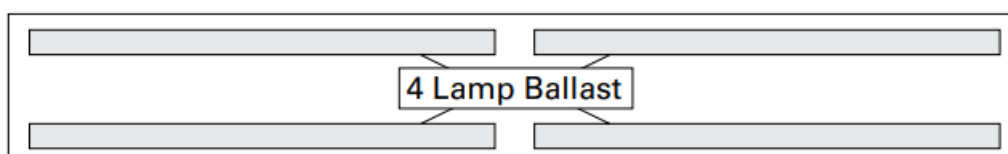
TILW Option

Tandem In-Line Wiring System

Description

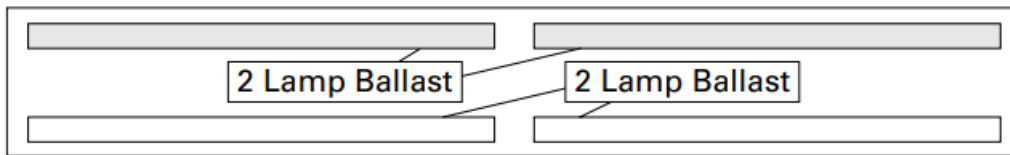
The Tandem In-Line Wiring option provides factory installed wiring when fixture sections are applied in pairs, and require left/right lamp switching. To explain, ballast receive their power from the circuit, with lamps getting their power from the ballast. TILW is the method of applying power from the ballast to specific lamps. TILW only applies to two (2) or more lamp cross sections. If the luminaire has only one (1) row of lamps, TILW is already present and unnecessary to specify. The TILW option is available on IAF/ICF, DIF/DMF/DVMF, SSF, SSL, SNF, SNSM, SNRA, RCG and I5/I8.

The following ballast configuration does not allow for TILW



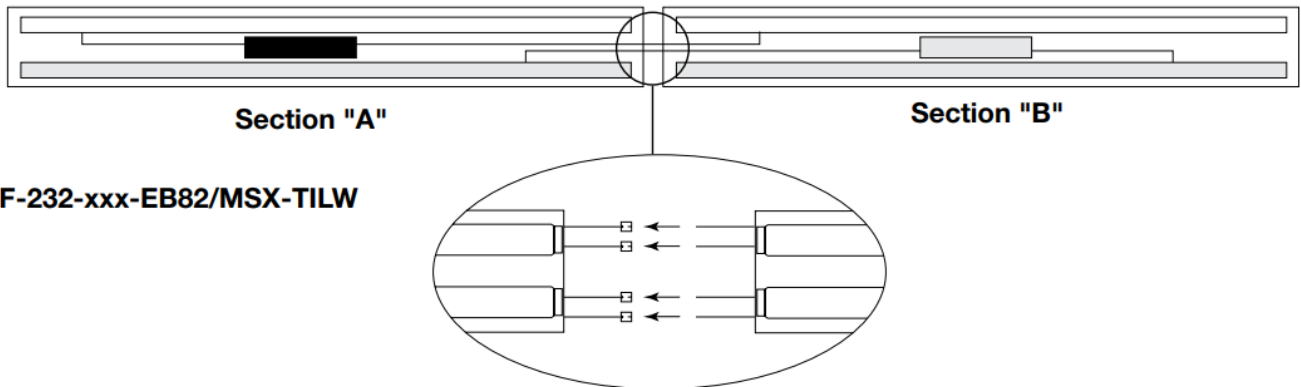
8TSSF-232-xxx-EB81

The following ballast configuration does not allow for TILW



8TSSF-232-xxx-EB82-TILW

The TILW can also be used in applications where Master-Satellite configurations are required. Simply specify the appropriate Master-Satellite description followed by TILW. Standard TILW is provided with push-in connectors (shown below) for fixture wiring connections. Optional PITLW is provided with pre-configured wiring harness for quick and easy installation of Master-Satellite tandem in-line wired fixtures. Shown below is an example of a ballast configuration, along with sample fixture catalog number, including Master-Satellite and TILW.

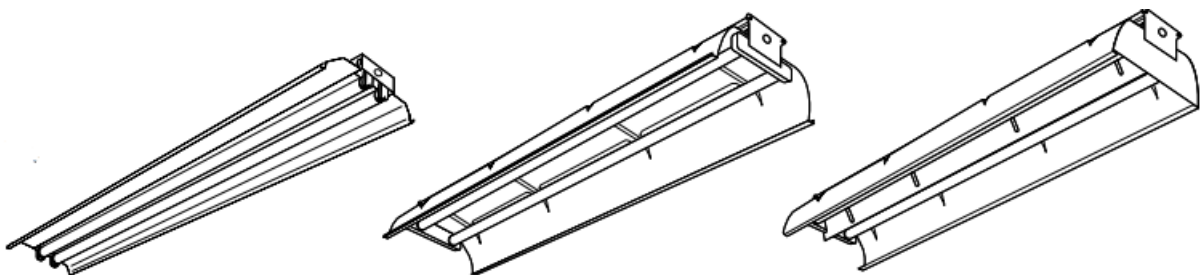


SSF-232-xxx-EB82/MSX-TILW

Availability

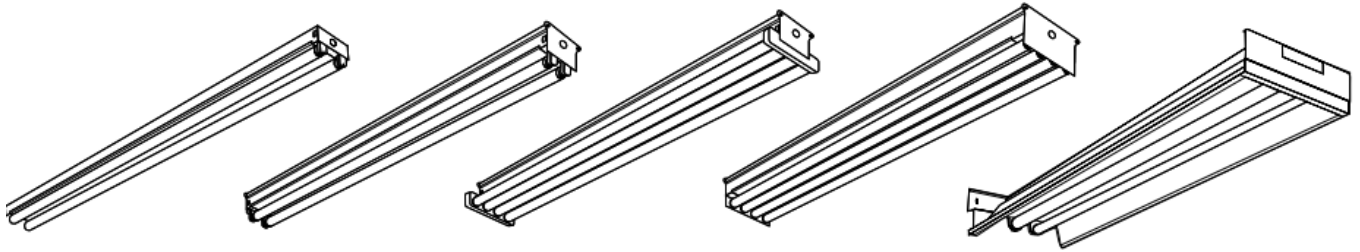
Industrials

- ICF/IAF Series
- DIF, DMF, DVMF Series



Strips

- SNF/SSF Series
- STN Series
- STM Series
- STW Series
- RCG Series
- ECG Series



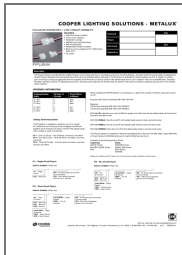
For other fixture series availability consult Pre Sale Technical Support

For complete product data, reference the Fluorescent Specification binder. Specifications & dimensions subject to change without notice. Consult your Cooper Lighting Solutions Representative for availability and ordering information.

Visit our web site at www.cooperlighting.com

Customer First Center 1121 Highway 74 South Peachtree City, GA 30269 770.486.4800 FAX 770.486.4801 8/12 ADF022341

Documents / Resources



[COOPER Lighting Solutions PI 1 BLK Plug-In System](#) [pdf] Instructions

PI 1 BLK, PI 2 BLU, PI 2 BLK, PI 3 RED, PI 3 BLU, PI 3 BLK, PI 1 BLK Plug-In System, Plug-In System, System

References

- [Commercial Lighting Company | Cooper Lighting Solutions](#)