



## Cooper Hunter RG10A-F2S-H2S-G2S-K2S-BGEF Remote Controller Owner's Manual

[Home](#) » [Cooper Hunter](#) » Cooper Hunter RG10A-F2S-H2S-G2S-K2S-BGEF Remote Controller Owner's Manual



Cooper Hunter RG10A-F2S-H2S-G2S-K2S-BGEF Remote Controller Owner's Manual

**IMPORTANT NOTE:**

Thank you for purchasing our air conditioner.

Please read this manual carefully before operating your new air conditioning unit.

Make sure to save this manual for future reference.

**SPECIAL NOTE**

- Button designs on your unit may differ slightly from the example shown.
- If the indoor unit does not have a particular function, pressing that function's button on the remote control will have no effect.
- When there are wide differences between "Remote controller Manual" and "USER'S MANUAL" on function description, the description of "USER'S MANUAL" shall prevail.

## Contents

[1 Remote Controller](#)

[Specifications](#)

[2 Quick Start Guide](#)

[3 Handling the Remote Controller](#)

[4 Buttons and Functions](#)

[5 Remote Screen Indicators](#)

[6 How to Use Basic Functions](#)

[7 Setting the TIMER](#)

[8 How to Use Advanced Functions](#)

[9 PRODUCT REGISTRATION:](#)

[10 Documents / Resources](#)

[10.1 References](#)

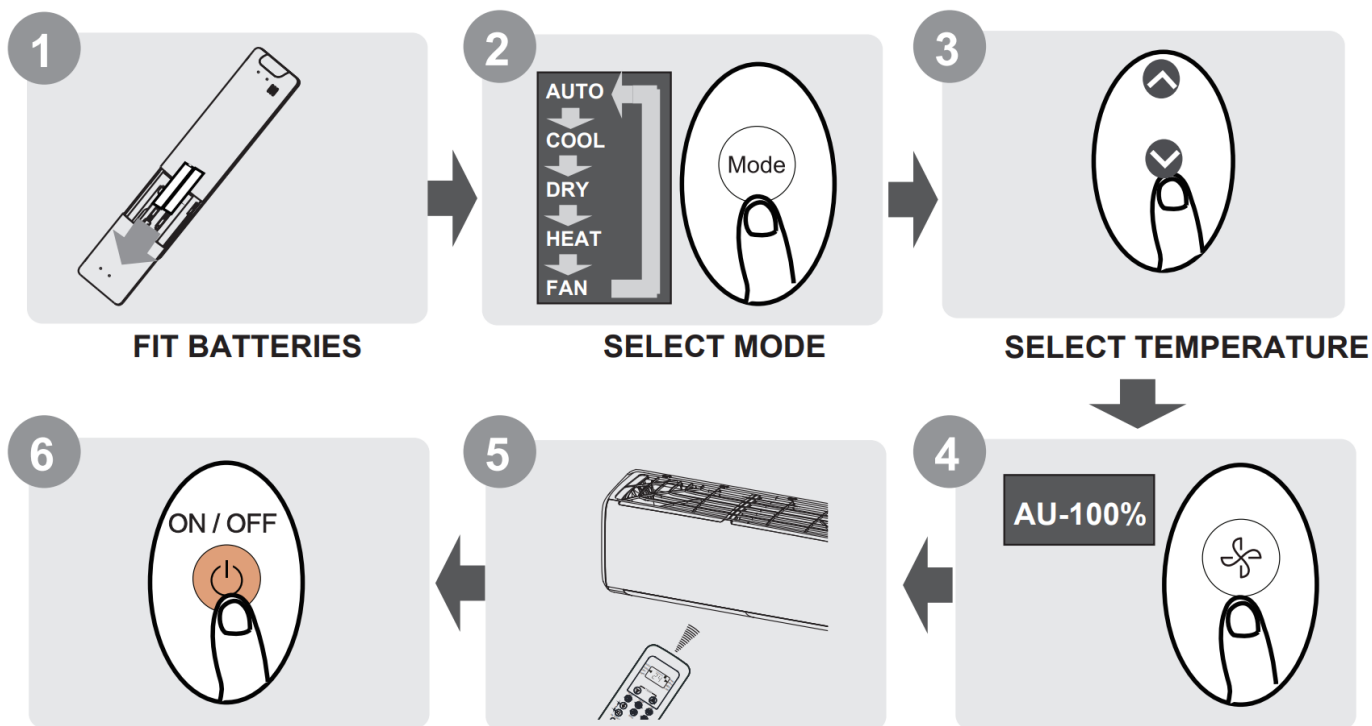
[11 Related Posts](#)

## Remote Controller Specifications

<b>Model</b>	RG10A(F2S/H2S/G2S/K2S)/BGEF, RG10A(F2S/H2S/G2S/K2S)/BGEFU1, RG10A1(F2S/H2S/G2S/K2S)/BGEF, RG10A2(F2S/H2S/G2S/K2S)/BGEFU1, Model oce RG10A2(F2S/H2S/G2S/K2S)/BGCEFU1, RG10A(S2S)/BGEF, RG10A2(F2S/H2S/G2S/K2S)/BGEF, RG10Y2(S2S)/BGEF RG10A10(F2S/H2S/G2S/K2S)/BGEF, RG10Y2(F2S/H2S/G2S/K2S)/BGEF
<b>Rated Voltage</b>	3.0V( Dry batteries RO3/LR03x2)
<b>Signal Receiving Range</b>	8m
<b>Environment</b>	23°F~140°F(-5°C~60°C)

**NOTE:** For model of RG10Y2(F2S/G2S/H2S/K2S/S2SYBGEF, If the unit is turned off under COOL, AUTO or DRY mode with the set temperature less than 75°F (24°C), the set temperature will be automatically set to 75°F (24°C) when you turn on the unit again. If the unit is turned off under HEAT mode with the set temperature more than 75°F (24°C), the set temperature will be automatically set to 75°F (24°C) when you turn on the unit again.

## Quick Start Guide



PRESS POWER BUTTON

SELECT FAN SPEED

POINT REMOTE TOWARD UNIT

### NOT SURE WHAT A FUNCTION DOES?

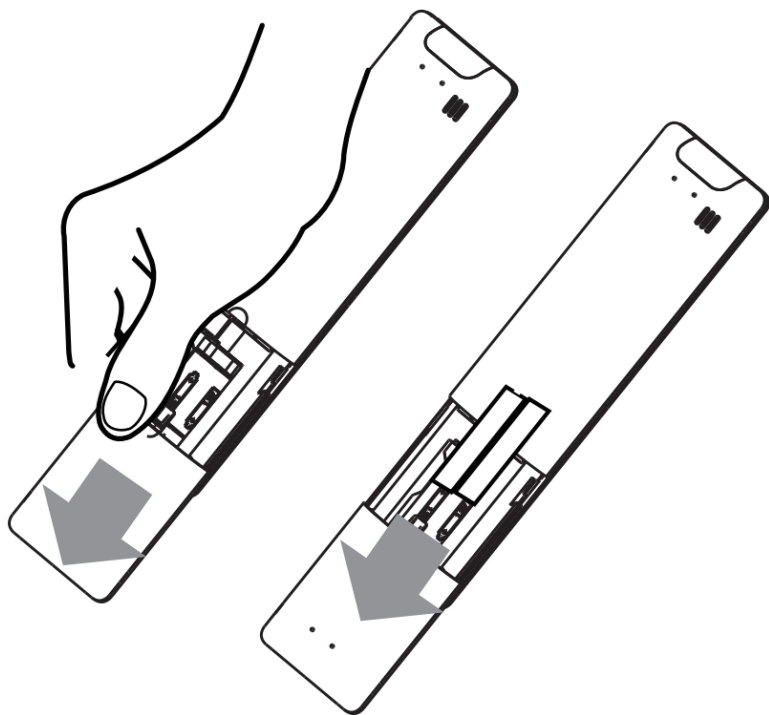
Refer to the How to Use Basic Functions and How to Use Advanced Functions sections of this manual for a detailed description of how to use your air conditioner.

## Handling the Remote Controller

### Inserting and Replacing Batteries

Your air conditioning unit may come with two batteries(some units). Put the batteries in the remote control before use.

1. Slide the back cover from the remote control downward, exposing the battery compartment.
2. Insert the batteries, paying attention to match up the (+) and (-) ends of the batteries with the symbols inside the battery compartment.
3. slide the battery cover back into place.



### **BATTERY NOTES**

For optimum product performance:

- Do not mix old and new batteries, or batteries of different types.
- Do not leave batteries in the remote control if you don't plan on using the device for more than 2 months.



### **BATTERY DISPOSAL**

Do not dispose of batteries as unsorted municipal waste. Refer to local laws for proper disposal of batteries.

### **TIPS FOR USING REMOTE CONTROL**

- The remote control must be used within 8 meters of the unit.
- The unit will beep when remote signal is received.
- Curtains, other materials and direct sunlight can interfere with the infrared signal receiver.
- Remove batteries if the remote will not be used more than 2 months.

### **NOTES FOR USING REMOTE CONTROL**

The device could comply with the local national regulations.

- In Canada, it should comply with CAN ICES-3(B)/NMB-3(B)
- In USA, this device complies with part 15 of the FCC Rules. Operation is subject to the following two conditions:

1. This device may not cause harmful interference, and
2. this device must accept any interference received, including interference that may cause undesired operation.

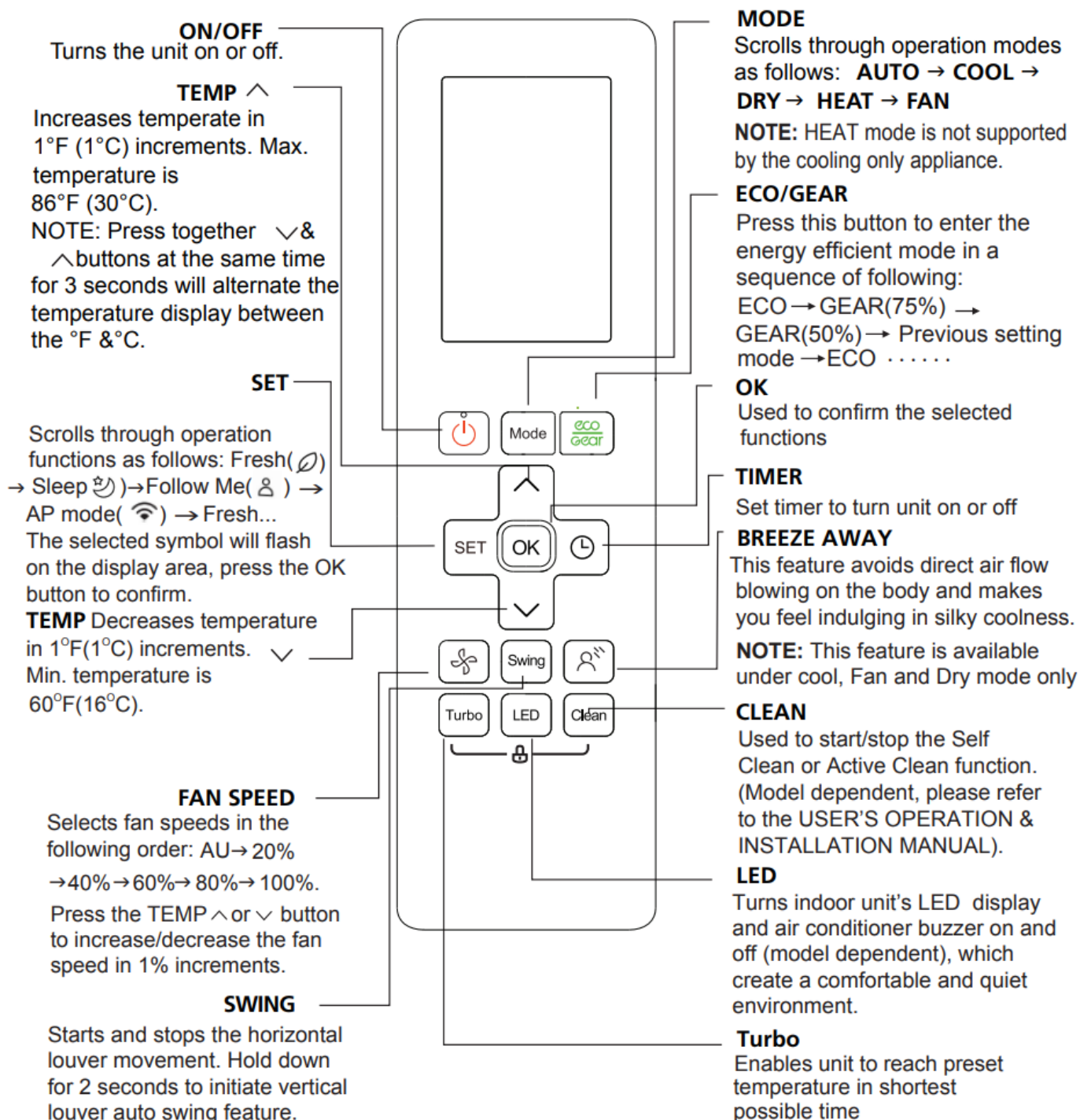
This equipment has been tested and found to comply with the limits for a Class B digital device, pursuant to part 15 of the FCC Rules. These limits are designed to provide reasonable protection against harmful interference in a residential installation. This equipment generates, uses and can radiate radio frequency energy and, if not

installed and used in accordance with the instructions, may cause harmful interference to radio communications. However, there is no guarantee that interference will not occur in a particular installation. If this equipment does cause harmful interference to radio or television reception, which can be determined by turning the equipment off and on, the user is encouraged to try to correct the interference by one or more of the following measures:

- Reorient or relocate the receiving antenna.
- Increase the separation between the equipment and receiver.
- Connect the equipment into an outlet on a circuit different from that to which the receiver is connected.
- Consult the dealer or an experienced radio/TV technician for help.
- Changes or modifications not approved by the party responsible for compliance could void user's authority to operate the equipment.

## **Buttons and Functions**

Before you begin using your new air conditioner, make sure to familiarize yourself with its remote control. The following is a brief introduction to the remote control itself. For instructions on how to operate your air conditioner, refer to the **How to Use Basic Functions** section of this manual



#### Model:

RG10A2(F2S/H2S/G2S/K2SYBGEFU1, RG10Y2(F2S/H2S/G2S/K28/S2SYBGEF

RG10A10(F25/G2S/H2S/K2S)BGEF(20-28 °C/68-82°F)

RG10A(F2S/H2S/G28/K25/S2S)BGEF, RG10A(F2S/H2S/G2S/K2S)/BGEFU1 ( Fresh feature is not available)

RG10A2(F25/H28/G2S/K2SYBGCEFU1, RG10A2(F2S/H2S/G2S/K2S)/BGCEF (Cooling only models, AUTO mode and HEAT mode are not available)

**ON/OFF**  
Turns the unit on or off.

**TEMP ^**  
Increases temperature in 1°F (1°C) increments. Max. temperature is 86°F (30°C).  
**NOTE:** Press together ∇ & ^ buttons at the same time for 3 seconds will alternate the temperature display between the °F & °C.

**SET**  
Scrolls through operation functions as follows:  
Breeze Away(🌀) → Sleep(🌙) → Follow Me(👤) → AP mode(📶) → Breeze Away ...

The selected symbol will flash on the display area, press OK button to confirm.

**TEMP ∇**  
Decreases temperature in 1°F(1°C) increments. Min. temperature is 60°F(16°C).

**FAN SPEED**  
Selects fan speeds in the following order: AU → 20% → 40% → 60% → 80% → 100%.  
Press the TEMP ^ or ∇ button to increase/decrease the fan speed in 1% increments.

**SWING**  
Starts and stops the horizontal louver movement. Hold down for 2 seconds to initiate vertical louver auto swing feature.

**MODE**  
Scrolls through operation modes as follows: **AUTO** → **COOL** → **DRY** → **HEAT** → **FAN**  
**NOTE:** HEAT mode is not supported by the cooling only appliance.

**ECO/GEAR**  
Press this button to enter the energy efficient mode in a sequence of following:  
ECO → GEAR(75%) → GEAR(50%) → Previous setting mode → ECO .....

**OK**  
Used to confirm the selected functions

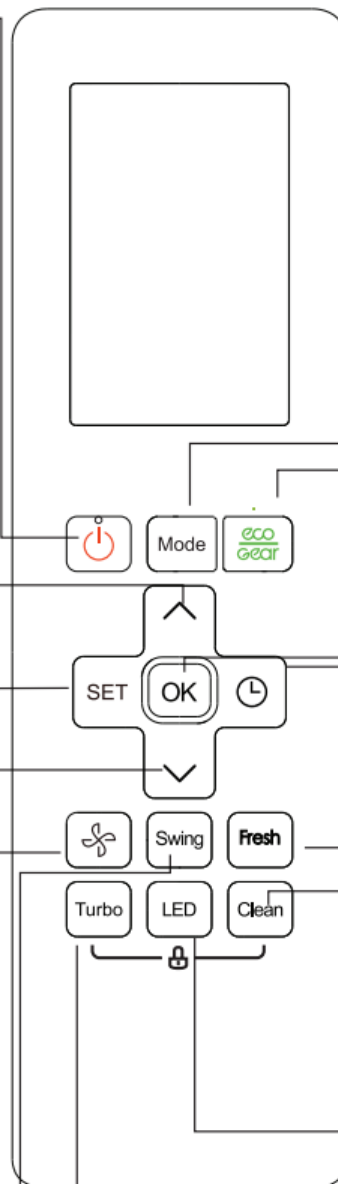
**TIMER**  
Set timer to turn unit on or off

**FRESH**  
Used to start and stops the Fresh feature.

**CLEAN**  
Used to start/stop the Self Clean or Active Clean function. (Model dependent, please refer to the USER'S OPERATION & INSTALLATION MANUAL).

**LED**  
Turns indoor unit's LED display and air conditioner buzzer on and off (model dependent), which create a comfortable and quiet environment.

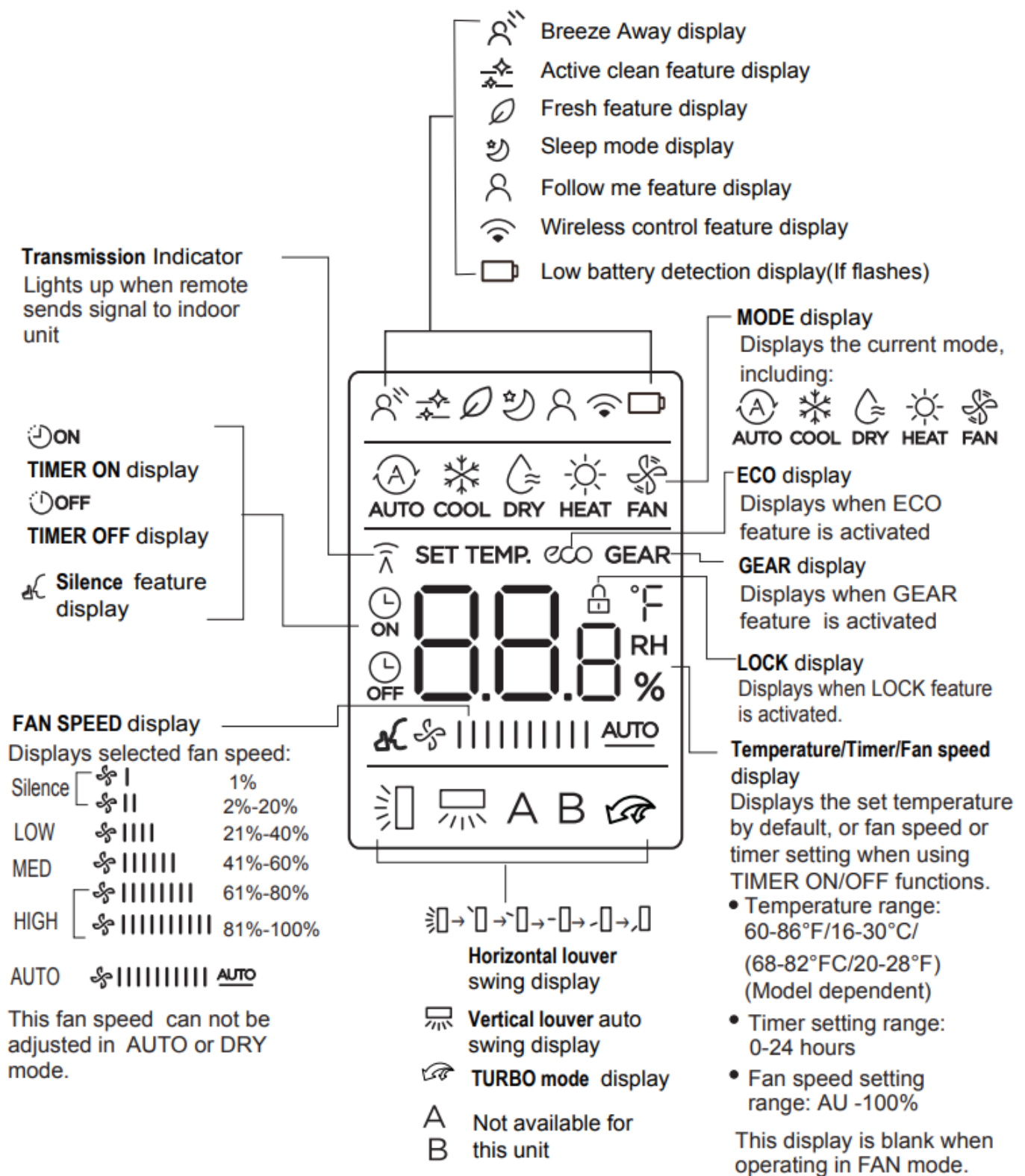
**Turbo**  
Enables unit to reach pr temperature in shortest possible time



## Remote Screen Indicators

Information are displayed when the remote controller is power up.





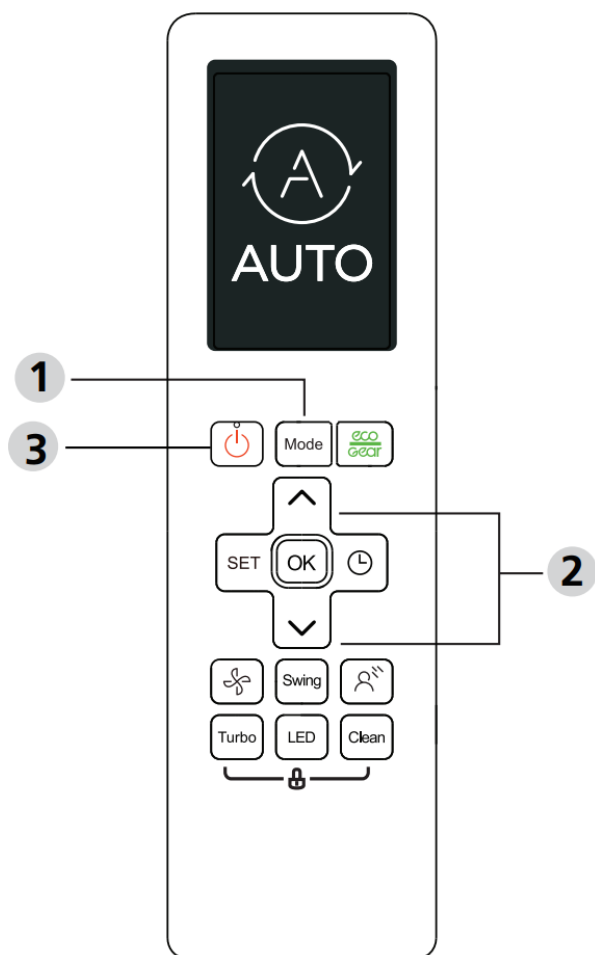
#### Note:

All indicators shown in the figure are for the purpose of clear presentation. But during the actual operation, only the relative function signs are shown on the display window.

## How to Use Basic Functions

### Basic operation

**ATTENTION!** Before operation, please ensure the unit is plugged in and power is available.



### SETTING TEMPERATURE

The operating temperature range for units is **60-86°F (16-30°C)** You can increase or decrease the set temperature in **1°F (1°C)** increments.

#### AUTO Mode

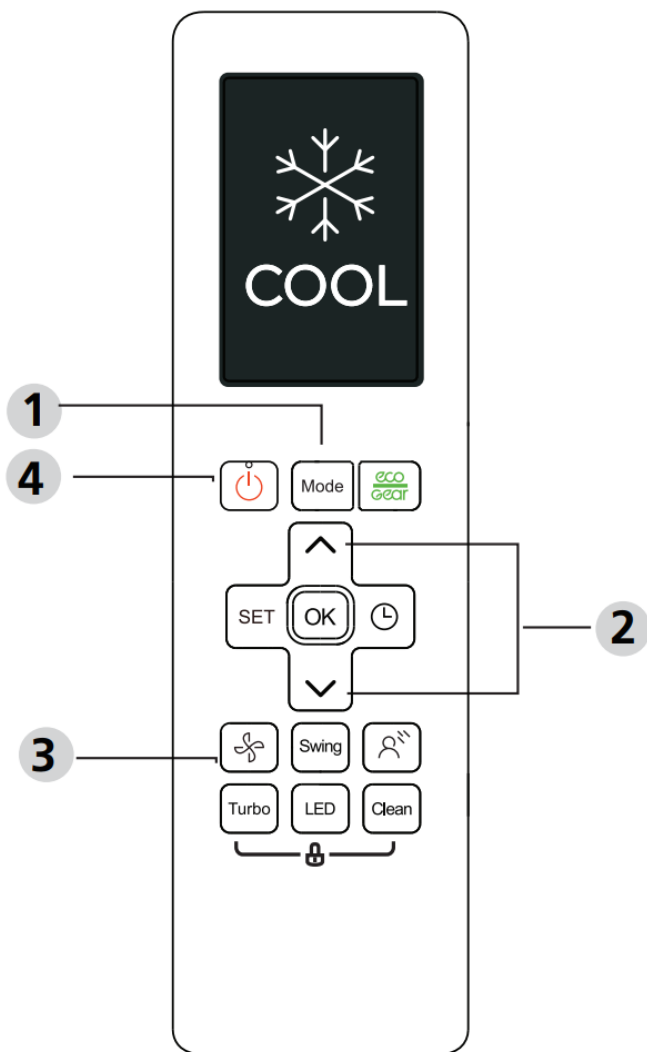
In **AUTO** mode, the unit will automatically select the **COOL**, **FAN** or **HEAT** operation based on the set temperature.

1. Press the **MODE** button to select **AUTO**.
2. Set your desired temperature using the TEMP /N or **TEMP** button
3. Press the **ON/OFF** button to start the unit.

**NOTE: FAN SPEED** can't be set in **AUTO** mode.

#### COOL Mode

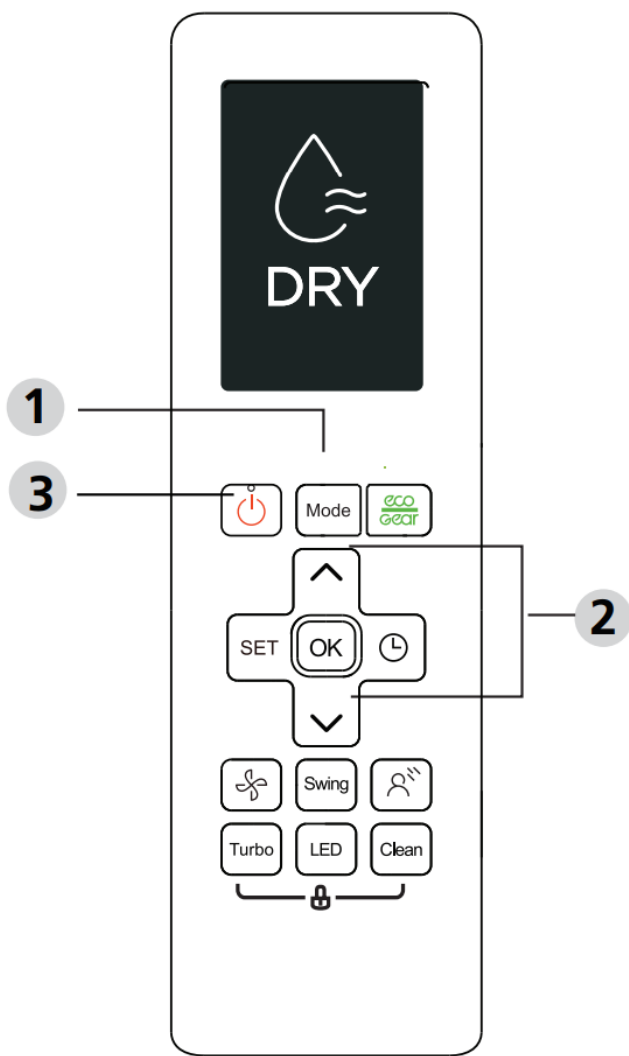
1. Press the **MODE** button to select **COOL** mode.
2. set your desired temperature using the **TEMP A** or **TEMP** button.
3. Press **FAN** button to select the fan speed in range of **AU-100%**.
4. Press the **ON/OFF** button to start the unit.



### **DRY Mode (dehumidifying)**

1. Press the **MODE** button to select **DRY**.
2. Set your desired temperature using the **TEMP A** or **TEMP v** button
3. Press the **ON/OFF** button to start the unit.

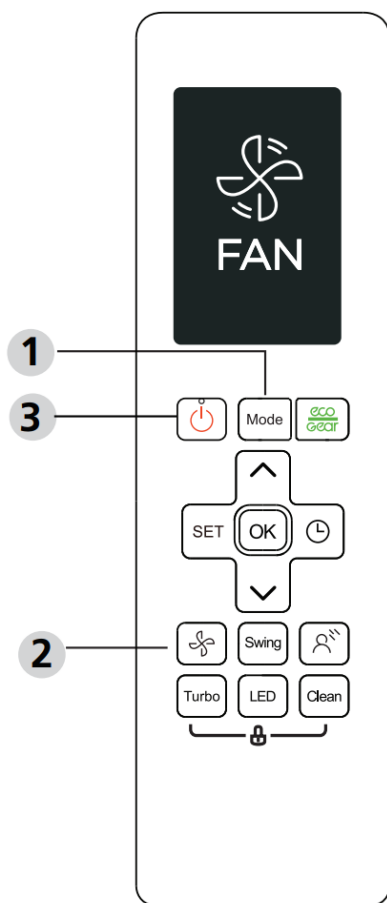
**NOTE: FAN SPEED** cannot be changed in **DRY** mode.



### FAN Mode

1. Press the **MODE** button to select **FAN** mode.
2. Press **FAN** button to select the fan speed in arange of **AU-100%**.
3. Press the **ON/OFF** button to start the unit.

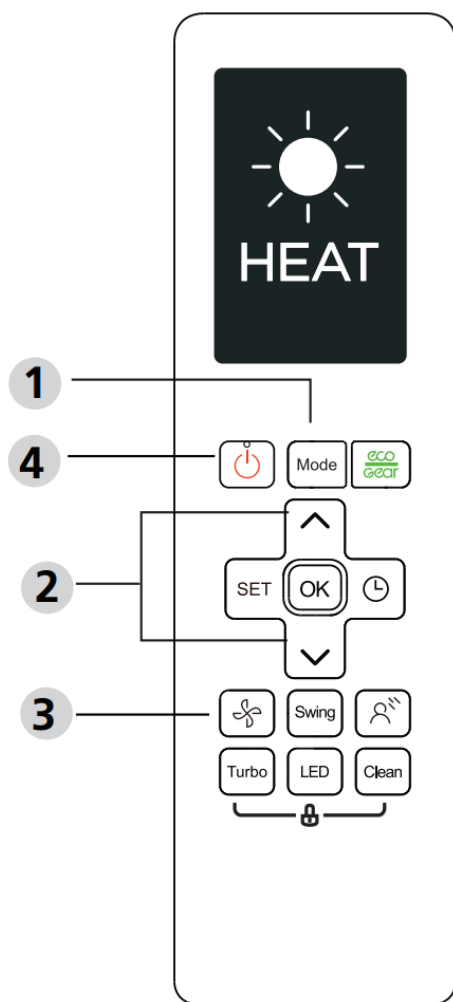
**NOTE:** You can't set temperature in **FAN** mode. As a result, your remote control's **LCD** screen will not display temperature:



## HEAT Mode

1. Press the **MODE** button to select **HEAT** mode.
2. Set your desired temperature using the **TEMP A~** or **TEMP ~** button.
3. Press **FAN** button to select the fan speed in arange of **AU-100%**.
4. Press the **ON/OFF** button to start the unit.

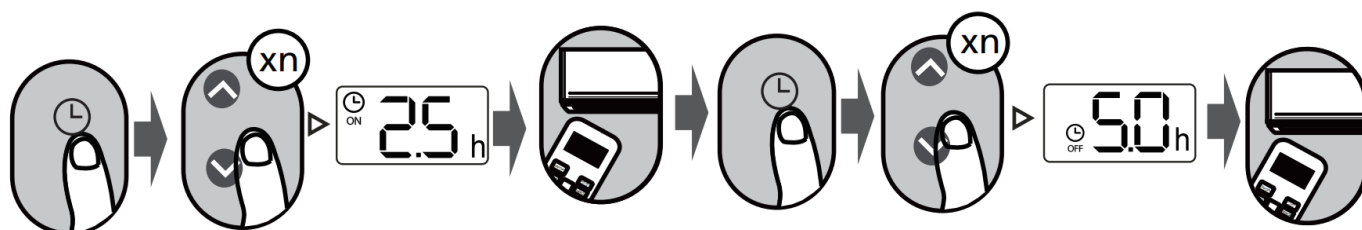
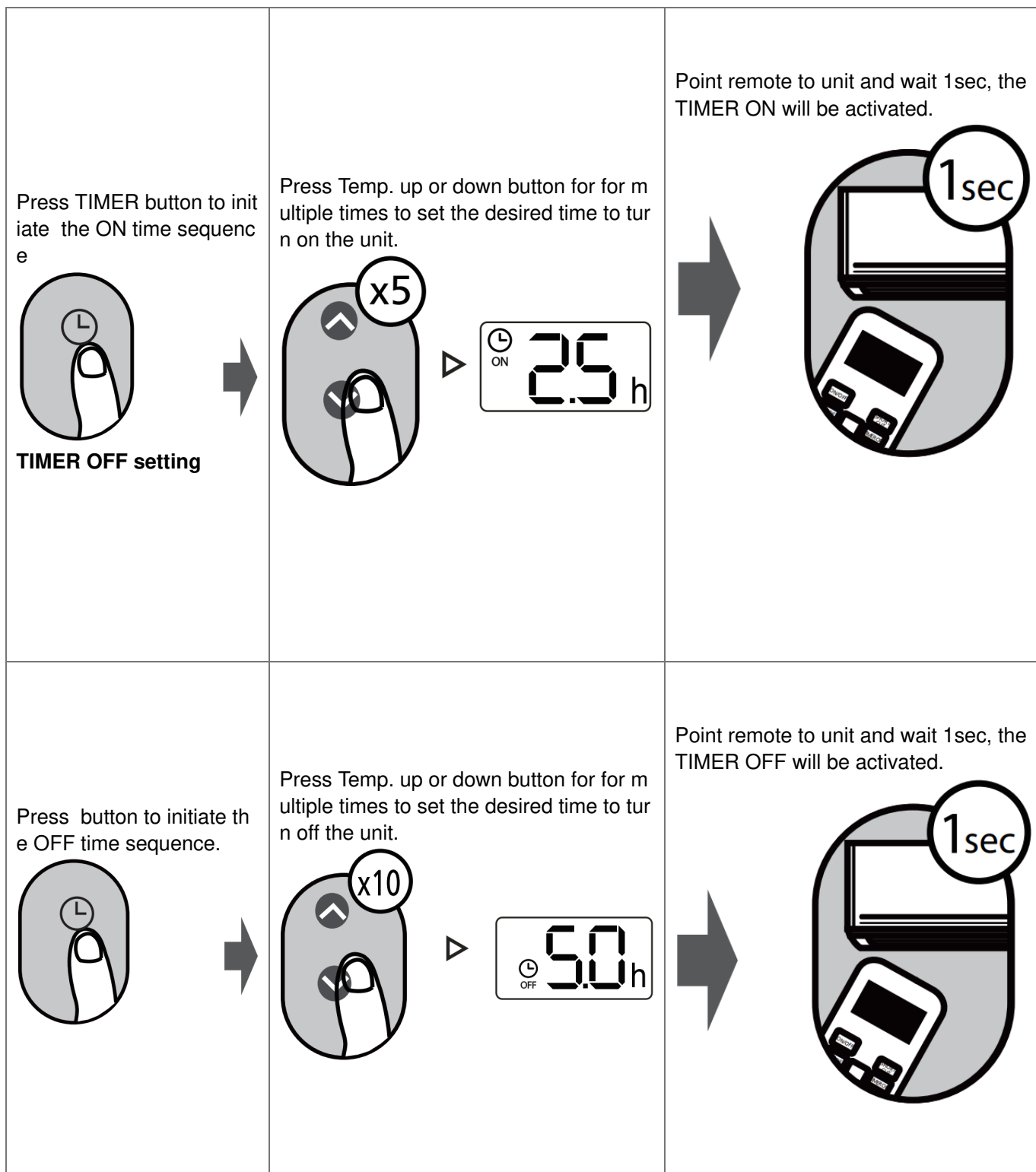
**NOTE:** As outdoor temperature drops, the performance of your unit's HEAT function may be affected. In such instances, we recommend using this air conditioner in conjunction with other heating appliances.



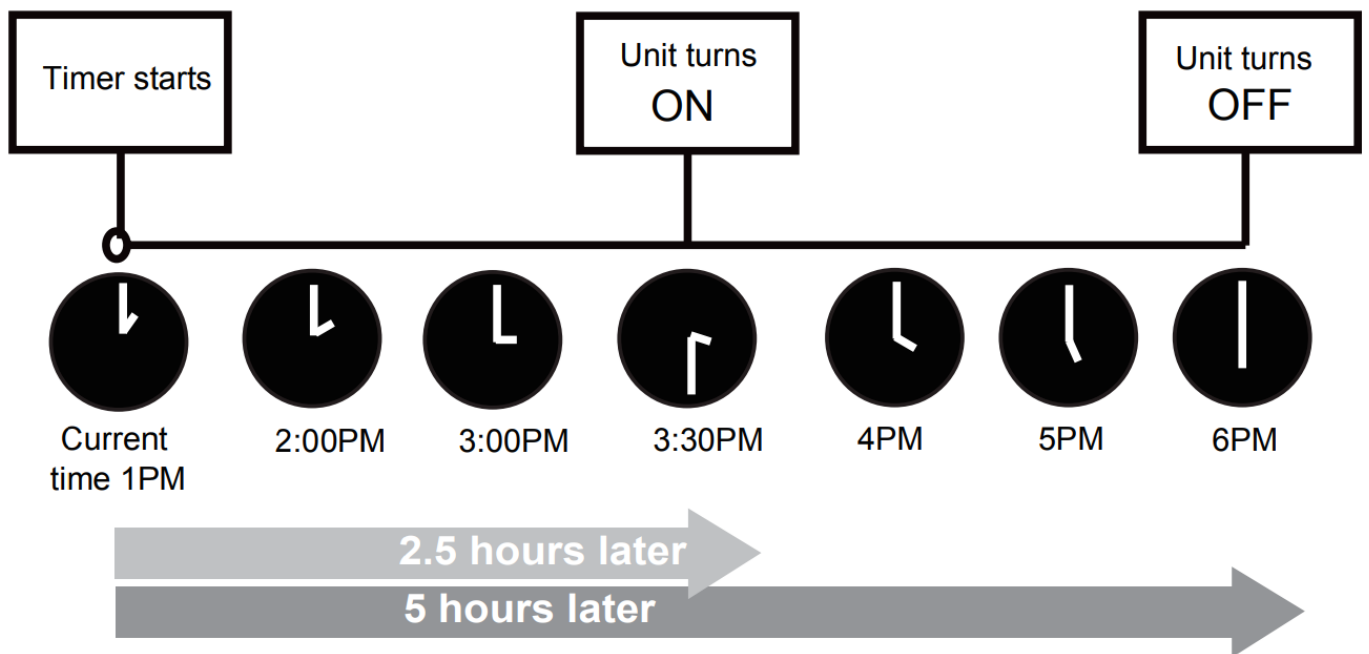
## Setting the TIMER

**TIMER ON/OFF** – Set the amount of time after which the unit will automatically turn on/off.

**TIMER ON setting**



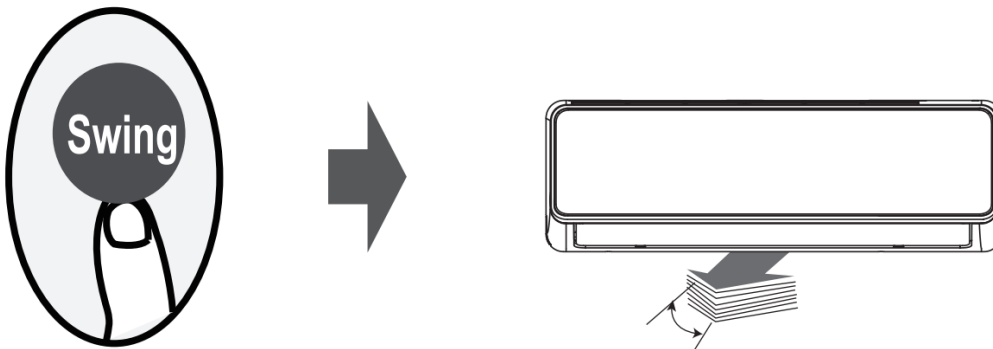
**Example:** If current timer is 1:00PM, to set the timer as above steps, the unit will turn on 2.5h later (3:30PM) and turn off at 6:00PM.



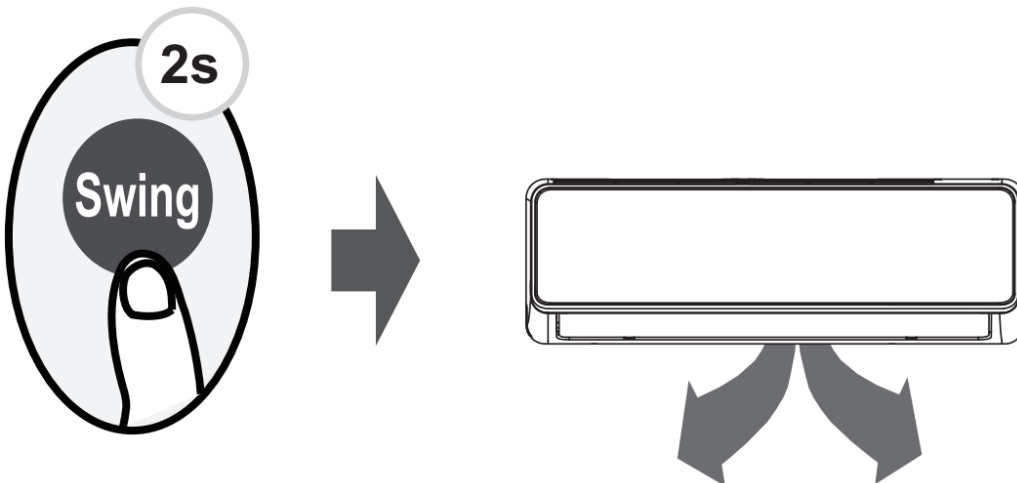
## How to Use Advanced Functions

### Swing function

Press Swing button GE



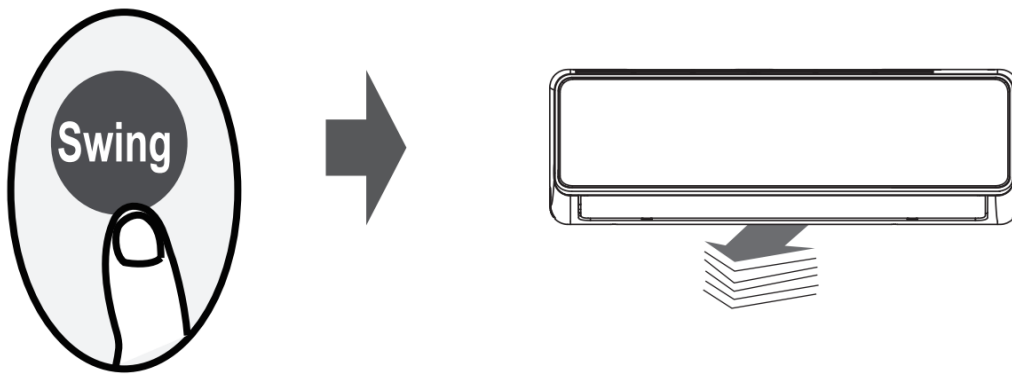
The horizontal louver will swing up and down automatically when pressing Swing button Press again to make it stop.



Keep pressing this button more than 2 seconds, the vertical louver swing function is activated (Model dependent)

**Airflow direction**



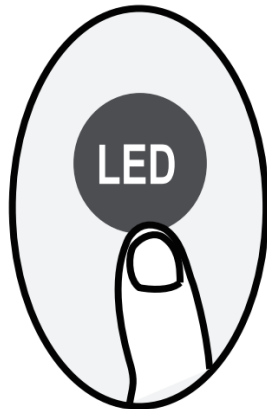


If continue to press the SWING button, five different airflow directions can be set. The louver can be move at a certain range each time you press the button. Press the button until the direction you prefer is reached.

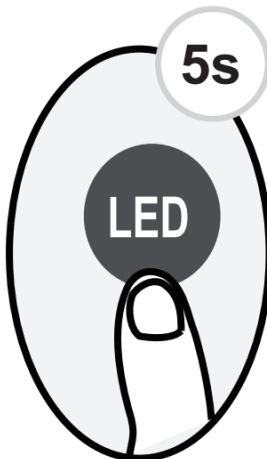
**NOTE:** When the unit is off, press and hold MODE and SWING buttons together for one second, the louver will open for a certain angle, which makes it very convenient for cleaning. Press and hold MODE and SWING buttons together for one second to reset the louver (Model dependent).

## LED DISPLAY

Press LED button



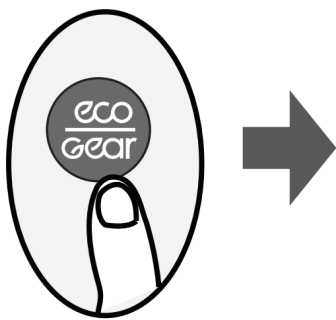
Press this button to turn on and turn off the display on the indoor unit.



Press this button more than 5 seconds (some units)

Keep pressing this button more than 5 seconds, the indoor unit will display the actual room temperature. Press more than 5 seconds again will revert back to display the setting temperature.

## ECO/GEAR function



Press this button to enter the energy efficient mode in a sequence of » following:

ECO — GEAR(75%) — GEAR(50%) —»Previous setting mode —» ECO.....

**Note:** This function is only available under COOL mode.

#### **ECO operation:**

Under cooling mode, press this button, the remote controller will adjust the temperature automatically to 75°F/24°C F, fan speed of Auto to save energy (only when the set temperature is less than 75°F/24°C. If the set temperature is above 75°F/24°C, press the ECO button, the fan speed will change to Auto, the set temperature will remain unchanged.

#### **NOTE:**

Pressing the ECO/GEAR button, or modifying the mode or adjusting the set temperature to less than 75°F/24°C F will stop ECO operation.

Under ECO operation, the set temperature should be 75°F/24°C, F or above, it may result in insufficient cooling. If you feel uncomfortable, just press the ECO button again to stop it.

#### **GEAR operation:**

Press the ECO/GEAR button to enter the GEAR operation as following:

75%(up to 75% electrical energy consumption) i

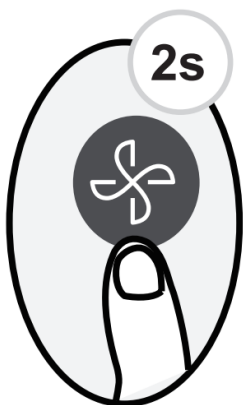
50%(up to 50% electrical energy consumption)

i

Previous setting mode.

Under GEAR operation, the display on the remote controller will alternage between electical energy consumption and set temperature.

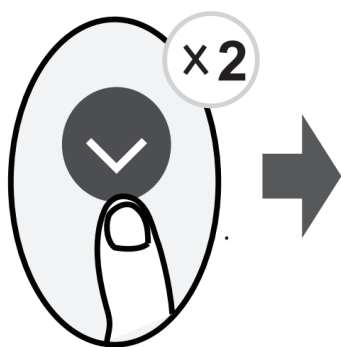
#### **Silence function**



Keep pressing Fan button for more than 2 seconds to activate/disable Silence function(some units)

Due to low frequency operation of compressor, it may result in insufficient cooling and heating capacity. Press ON/OFF, Mode, Sleep, Turbo or Clean button while operating will cancel silence function

#### **FP function**



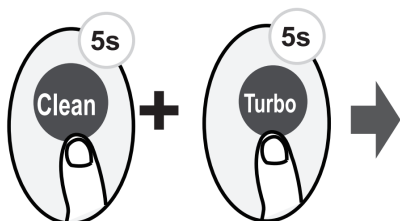
The unit will operate at high fan speed (while » compressor on) with temperature automatically set to 46°F/8°C.

**Note:** This function is for heat pump air conditioner only.

Press this button 2 times during one second under HEAT Mode and setting temperature of 68°C/20°C or 68°F/20°C (for model RG10A10(F2S/H2S/G2S/K28)/BGEF) to activate FP function.

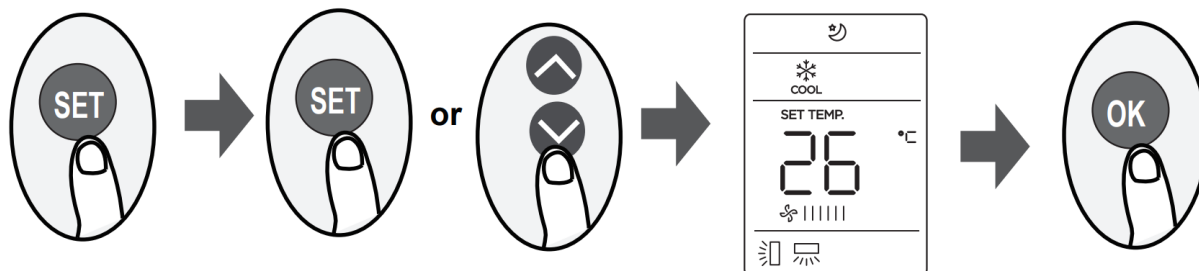
Press On/Off, Sleep, Mode, Fan and Temp. button while operating will cancel this function.

### LOCK function



Press together Clean button and Turbo button at the same time more than 5 seconds to activate Lock function. All buttons will not response except pressing these two buttons for two seconds again to disable locking.

### SET function



- Press the SET button to enter the function setting, then press SET button or TEMP\or TEMP A button to select the desired function. The selected symbol will flash on the display area, press the OK button to confirm.
- To cancel the selected function, just perform the same procedures as above.
- Press the SET button to scroll through operation functions as follows: Breeze Away\* (🌀) – Fresh\* (🍃) ~ Sleep (🌙) > Follow Me (👤) AP mode (📶) [#]: If your remote controller has Breeze Away button or Fresh button, you can not use the SET button to select the Breeze Away or Fresh feature.

### Breeze Away function (🌀) (some units) :

This feature avoids direct air flow blowing on the body and makes you feel indulging in silky coolness.

**NTOE:** This feature is available under cool, Fan and Dry mode only.

### FRESH function (🍃) (some units) :

When the FRESH function is initiated, the Ionizer/Plasma Dust Collector (depending on models) is energized and will help to remove pollen and impurities from the air.

### Sleep function (🌙) :

The SLEEP function is used to decrease energy use while you sleep (and don't need the same temperature

settings to stay comfortable). This function can only be activated via remote control For the detail, see \* sleep operation” in “USER”S MANUAL?

**Note:** The SLEEP function is not available in FAN or DRY mode.

### **Follow me function( ):**

The FOLLOW ME function enables the remote control to measure the temperature at its current location and send this signal to the air conditioner every 3 minutes interval When using AUTO, COOL or HEAT modes, measuring ambient temperature from the remote control(instead of from the indoor unit itself) will enable the air conditioner to optimize the temperature around you and ensure maximum comfort.

**NOTE:** Press and hold Turbo button for seven seconds to start/stop memory feature of Follow Me function

- If the memory feature is activated,” **On**” displays for 3 seconds on the screen
- If the memory feature is stopped, “**OF**” displays for 3 seconds on the screen
- While the memory feature is activated, press the **ON/OFF** button, shift the mode or power failure will not cancel the Follow me function

### **AP function( )(some units) :**

Choose AP mode to do wireless network configuration. For some units, it doesn't work by pressing the SET button. To enter the AP mode, continuously press the LED button seven times in 10 seconds.

### **Replacement 2 year Warranty**

The warranty should be registered on our **website** : [www.cooperandhunter.com](http://www.cooperandhunter.com)

### **PRODUCT REGISTRATION:**

**Model No.**

**Serial No. Date of Installation:** \_

**Owner Name:** Address of nstallation

**Place Of Purchase:**

**Date of Purchase:**

**Visit our website for:**



- Product Information
- Warranty Registration
- Installation Manual
- User Guides and more

[www.cooperandhunter.us](http://www.cooperandhunter.us)

Visit our YouTube Channel for:



- Instructional Videos
- Tutorials and How Tos Product Introductions
- Advertisement and more

[www.youtube.com/cooperandhunterusa](http://www.youtube.com/cooperandhunterusa)

C&H distributor (hereinafter “Company”) warrants this product against failure due to defect in materials or workmanship under normal use and maintenance as follows. All warranty periods begin on the date of original installation. If the date cannot be verified, the warranty period begins one hundred twenty (120) days from date of manufacture. Damage resulting from failure to use, install or maintain the product in a manner consistent with our/ manufacturer’s recommendations shall render the warranty void.

The design and specifications are subject to change without prior notice for product improvement. Consult with the sales agency or manufacturer for details.

This warranty covers all defects in workmanship and the internal parts contained in this product for 2 years from the date of purchase. Warranty covers the original purchaser of this product only.

The original purchase receipt must be presented in order to obtain the warranty. To claim the warranty, the customer should call our technical support to troubleshoot first, but if there problem cannot be fixed, Cooper & Hunter will replace any unit found to be defective in material or workmanship during two years after purchase for the same make and model. This is a one-time replacement warranty. Defective unit must be returned to the original store of purchase or to Cooper & Hunter office: 3550 NW 113th Ct, Doral, FL 33178,

THIS WARRANTY COVERS PRODUCTS WITHIN THE CONTINENTAL UNITED STATES.

LIMITATIONS OF WARRANTIES: ALL IMPLIED WARRANTIES AND/OR CONDITIONS (INCLUDING IMPLIED WARRANTIES OR CONDITIONS OF MERCHANTABILITY AND FITNESS FOR A PARTICULAR USE OR PURPOSE) ARE LIMITED TO THE DURATION OF THIS LIMITED WARRANTY. SOME STATES OR PROVINCES DO NOT ALLOW LIMITATIONS ON HOW LONG AN IMPLIED WARRANTY OR CONDITION LASTS, SO THE ABOVE MAY NOT APPLY TO YOU. THE EXPRESS WARRANTIES MADE IN THIS WARRANTY ARE EXCLUSIVE AND MAY NOT BE ALTERED, ENLARGED, OR CHANGED BY ANY DISTRIBUTOR, DEALER, OR OTHER PERSON, WHATSOEVER,

**THIS WARRANTY DOES NOT COVER:**

- Damages in shipping
- Damages caused by improper installation
- Damages as the result of not using product in accordance with provided instructions
- Damage from services performed by an unauthorized service center
- Disposal fees.
- Any performance issues that fall outside of the 2 years warranty
- Damages incurred to the home during installation, including but not limited to “doors , walls, and furniture.

- Rust on interior or exterior of unit.
- Products with the product labels/serial numbers that have been removed or altered.
- Products used in a commercial setting.
- Display models.

**NOTE:** Some states do not allow the exclusion or limitation of incidental or consequential damages. This limitation or exclusion may not apply to you.

Design and specifications are subject to change without prior notice for product improvement. Consult with the sales agency or manufacturer for details.



## Documents / Resources

	<p><a href="#">Cooper Hunter RG10A-F2S-H2S-G2S-K2S-BGEF Remote Controller</a> [pdf] Owner's Manual RG10A-F2S-H2S-G2S-K2S-BGEF, RG10A-F2S-H2S-G2S-K2S-BGEF Remote Controller, Remote Controller, Controller</p>
--	--

## References

- [User Manual](#)