



Contents [[hide](#)]

- [1 coolux V318 Projector](#)
- [2 Installation](#)
- [3 Power Source](#)
- [4 Cleaning](#)
- [5 High Temperature Attention](#)
- [6 Know Your Projector](#)
- [7 Remote control](#)
- [8 Focus regulation](#)
- [9 How to go to the Source selection](#)
- [10 How to connect WiFi](#)
- [11 How to mirroring with your iPhone](#)
- [12 How to work with Bluetooth Speaker](#)
- [13 Dust Cleaning](#)
- [14 Projection size](#)
- [15 Warning Statement](#)
- [16 Documents / Resources](#)
 - [16.1 References](#)



coolux V318 Projector



Installation

To achieve the best effect, please use the projector in a darker room or draw the curtains. Be careful when use the projector. Any dropping or bump may lead to damaged parts, blurred images or display improperly.

Power Source

Be careful to use power cord to avoid excessive bending. Damaged power cord may cause electric shock and fire. Please be careful when using this machine. Falling or striking may damage components, blur images or display abnormally.

Cleaning

Unplug the power cord. Clean the cabinet regularly with a damp cloth. Neutral detergent can be used. Do not use strong detergents or solvents (such as alcohol and thinner). The lens should be cleaned with glasses cloth or lens paper. Be careful not to scratch the lens. Please regularly use a soft brush to clean the air inlet filter , vent and loudspeaker of the machine, otherwise the vent will be blocked by dust accumulation, causing overheating of the machine, which will lead to machine failure.

High Temperature Attention

Do not disassemble the projector casually since there may be a risk of electric shock, which affects normal maintenance. Liquid or heavy objects should not allowed to put on the machine.



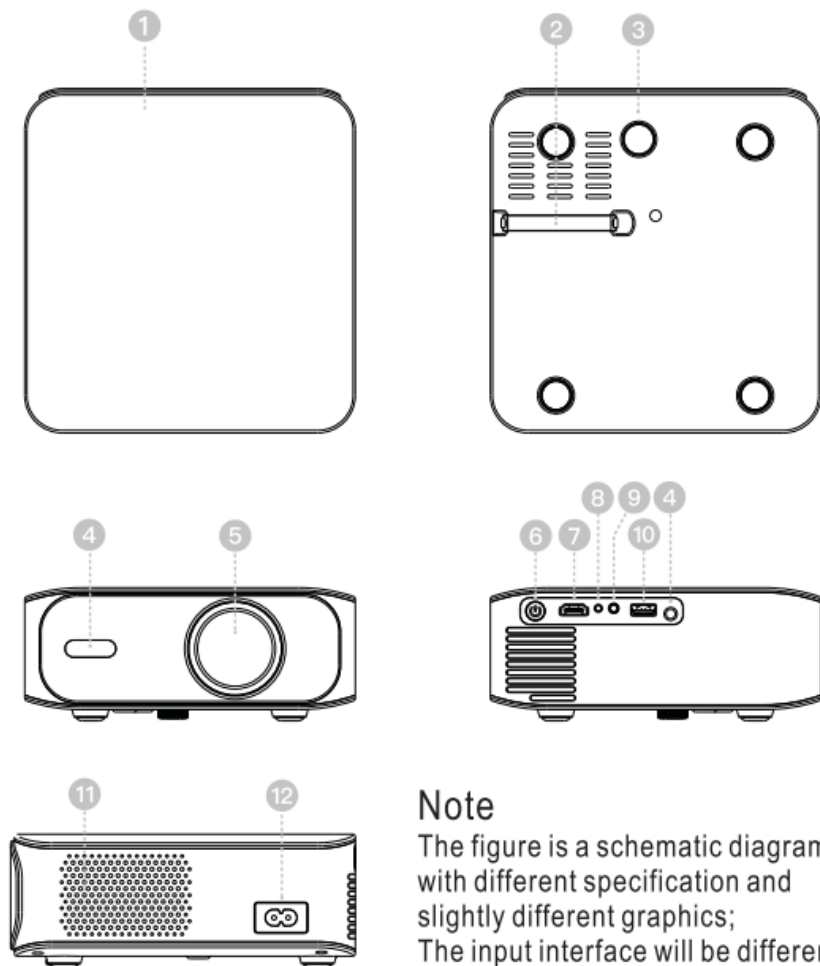
Suitable for areas below 2000m altitude.



Please use in an ambient temperature of 0-35 degrees Celsius.

Know Your Projector

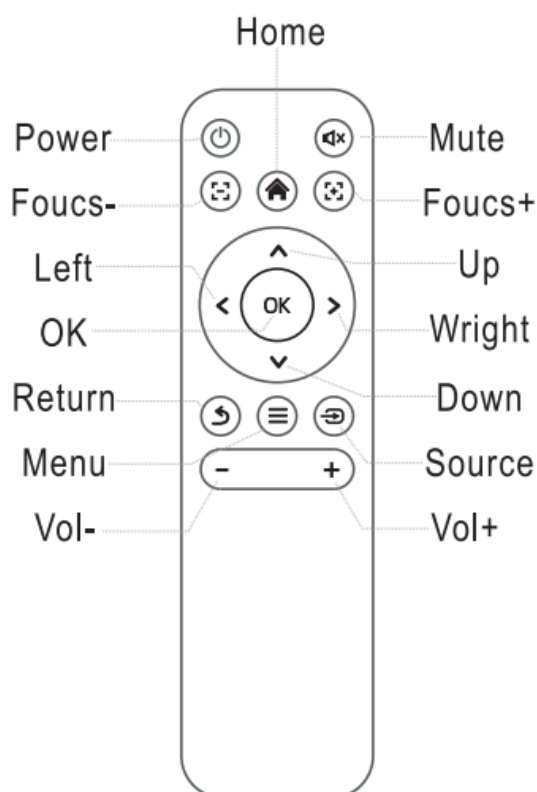
1. Top cover
2. Dust gauze
3. Lift foot
4. IR
5. Lens
6. ON/OFF
7. HDMI
8. Indicator light
9. Audio output
10. USB
11. Speaker
12. Power input



Note

The figure is a schematic diagram, with different specification and slightly different graphics; The input interface will be different according to the different model, the model you have shall prevail.

Remote control



Note:

1. The remote control must be on the front and rear of the projector, if facing the image, the remote control sensitivity will decrease.
2. The remote control will be different as different model.

Focus regulation

Manual focusing



Adjust the focus wheel of the body until the picture is clear.

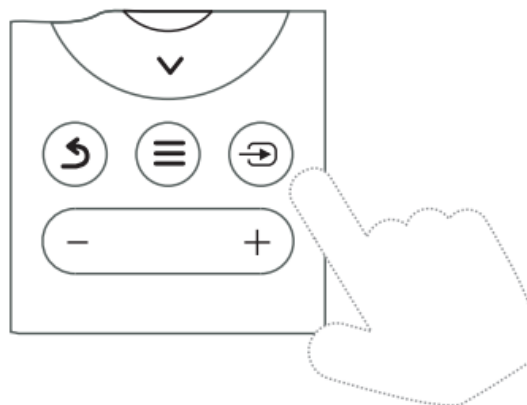
Electric focusing



Press the remote control " " and " " keys to fine-tune until the image is adjusted to the clearest effect.

How to go to the Source selection

Go to the home page, press the signal source button "EI" on the remote control, select the required signal source channel, such as "HDMI", "Media", and press the OK key of the remote control to enter the corresponding signal source state.



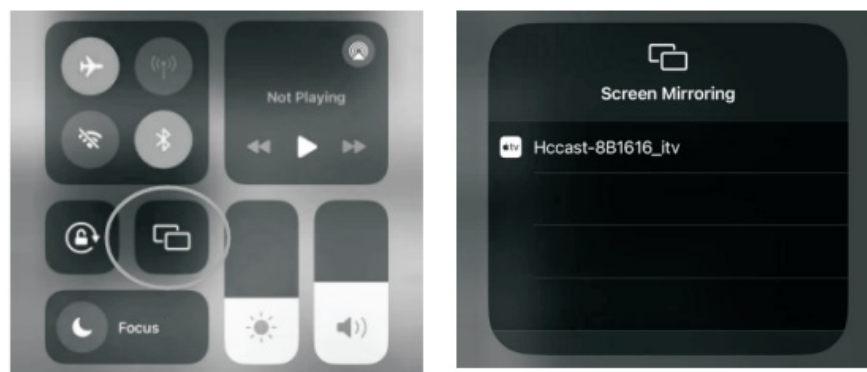
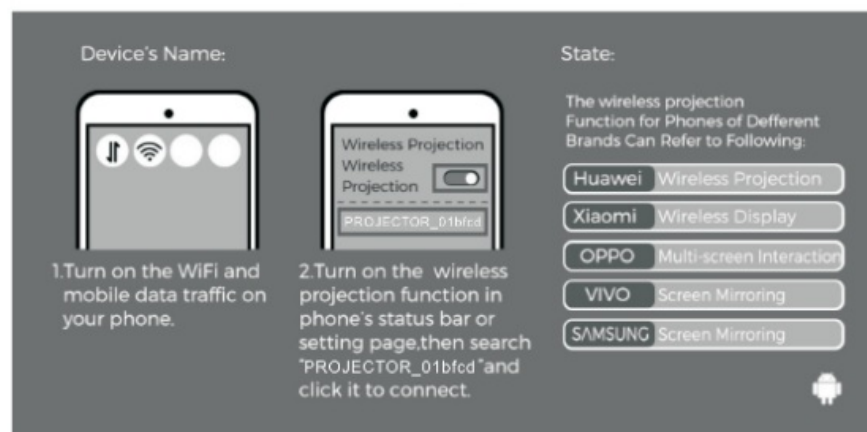
How to connect WiFi

- Enter the main interface, System Settings, Network

- Settings – WiFi Settings;find the network you want to connect to and press Confirm.
- Enter the password via the virtual keyboard and confirm the connection.

How to mirroring with your iPhone

1. Connect your phone and projector to the same wifi.
2. Device side: enter Wireless Screen in the main interface
3. Mobile side: open the Apple mirroring function and connect the device to the same screen. On an Android phone, find MIRRACAST for screen mirroring search, and then select the device to achieve screen mirroring.



How to work with Bluetooth Speaker

Projection end: the main interface accesses the Bluetooth speaker. Mobile terminal: open the Bluetooth connection function of the mobile phone to connect the projection Bluetooth.

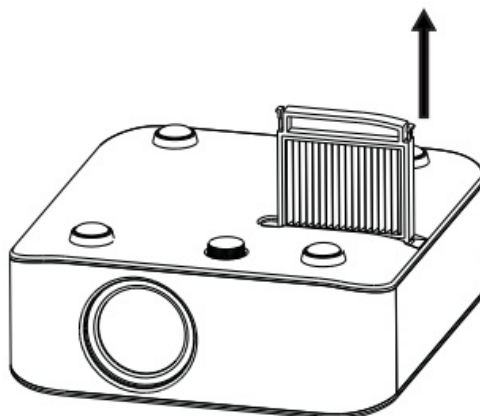
Note: Some models do not have the Bluetooth function.

Dust Cleaning

1. Clean the dust filter once every three months and replace the dust filter once every six

months.

2. Cleaning steps: shut off the projector, disconnect the power cord, remove the dust net from the bottom of the fuselage, blow the dust with the air duct, remove the dust and then install it into the projector. If the dust cannot be removed, a new dust filter must be replaced.



Projection size

Projection size(inch)	Projection distance(meter)
60	1.42
80	1.88
100	2.31

Warning Statement

This device complies with part 15 of the FCC Rules. Operation is subject to the following two conditions: (1) This device may not cause harmful interference, and (2) this device must accept any interference received, including interference that may cause undesired operation.


Any Changes or modifications not expressly approved by the party responsible for compliance could void the user's authority to operate the equipment.

Note: This equipment has been tested and found to comply with the limits for a Class B digital device, pursuant to part 15 of the FCC Rules. These limits are designed to provide reasonable protection against harmful interference in a residential installation. This equipment generates uses and can radiate radio frequency energy and, if not

installed and used in accordance with the instructions, may cause harmful interference to radio communications. However, there is no guarantee that interference will not occur in a particular installation. If this equipment does cause harmful interference to radio or television reception, which can be determined by turning the equipment off and on, the user is encouraged to try to correct the interference by one or more of the following measures:



- Reorient or relocate the receiving antenna.
- Increase the separation between the equipment and receiver.
- Connect the equipment into an outlet on a circuit different from that to which the receiver is connected.
- Consult the dealer or an experienced radio/TV technician for help.
- This equipment complies with FCC radiation exposure limits set forth for an uncontrolled environment. This equipment should be installed and operated with minimum distance 20cm between the radiator & your body.

Documents / Resources

	coolux V318 Projector [pdf] User Manual V318, V318 Projector, Projector
---	--

References

- [User Manual](#)

 Coolux, Projector, V318, V318
 Coolux Projector

Leave a comment

Your email address will not be published. Required fields are marked *

Comment *

Name

Email

Website

☐ Save my name, email, and website in this browser for the next time I comment.

Post Comment

Search:

e.g. whirlpool wrf535swhz

Search

[Manuals+](#) | [Upload](#) | [Deep Search](#) | [Privacy Policy](#) | [@manuals.plus](#) | [YouTube](#)

This website is an independent publication and is neither affiliated with nor endorsed by any of the trademark owners. The "Bluetooth®" word mark and logos are registered trademarks owned by Bluetooth SIG, Inc. The "Wi-Fi®" word mark and logos are registered trademarks owned by the Wi-Fi Alliance. Any use of these marks on this website does not imply any affiliation with or endorsement.