



# CoolGeek CS-01 Bluetooth Vinyl Record Player Instruction Manual

[Home](#) » [CoolGeek](#) » CoolGeek CS-01 Bluetooth Vinyl Record Player Instruction Manual 

## Contents

- 1 CoolGeek CS-01 Bluetooth Vinyl Record Player
- 2 PRODUCT INFORMATION
- 3 MACHINE DESCRIPTION
- 4 INSTRUCTIONS FOR USE
- 5 TECHNICAL PARAMETER
- 6 PRODUCT TECHNICAL SPECIFICATIONS
- 7 Documents / Resources

## CoolGeek

CoolGeek CS-01 Bluetooth Vinyl Record Player



## PRODUCT INFORMATION

**Model no.:** BLUETOOTH RECORD PLAYER

**WARNING:** DO NOT OPEN TO PREVENT THE RISK OF ELECTRIC SHOCK, DO NOT REMOVE COVER. NO USER-SERVICEABLE PARTS INSIDE. REFER SERVICING TO QUALIFIED SERVICE PERSONNEL.

**Caution:** This symbol alerts the user to the presence of uninsulated “dangerous voltage” within the product’s enclosure that may be of sufficient magnitude to constitute a risk of electric shock to persons.

**Caution:** This symbol is intended to alert the user to the presence of important operating and maintenance (servicing) instructions in the literature accompanying the appliance.

### Important Safety Instructions

1. Read these instructions.
2. Keep these instructions.
3. Heed all warnings.
4. Do not use this apparatus near water.
5. Clean only with dry cloth.
6. Do not block any ventilation openings. Install in accordance with the manufacturer’s instructions.
7. Do not install near any heat sources such as radiators, heat registers, stoves, or other apparatus (including amplifiers) that produce heat.
8. Do not defeat the safety purpose of the polarized or grounding-type plug. A polarized plug has two blades with one wider than the other. A grounding type plug has two blades and a third grounding prong. The wide blade or the third prong are provided for your safety. If the provided plug does not fit into your outlet, consult an electrician for replacement of the obsolete outlet.
9. Only use attachments/accessories specified by the manufacturer.
10. Use only with the cart, stand, tripod, bracket or table specified by the manufacturer, or sold with the apparatus. When a cart is used, use caution when moving the cart/apparatus combination to avoid injury from tip-over.
11. Unplug this apparatus during lightning storms or when not used for long periods of time.
12. Refer all servicing to qualified service personnel. Servicing is required when the apparatus has been damaged in any way, such as power supply cord or plug is damaged, liquid has been spilled or objects have fallen into the apparatus, the apparatus has been exposed to rain or moisture, does not operate normally, or has been dropped.
13. The apparatus shall not be exposed to dripping or splashing and that no objects filled with liquids, such as vases, shall be placed on the apparatus.
14. Do not install this apparatus in a bookcase or similar unit.
15. The apparatus draws nominal non-operating power from the AC outlet with its STANDBY/ON switch in the standby position.
16. The apparatus should be located close enough to the AC outlet so that you can easily grasp the power cord plug at any time.
17. To completely disconnect the power input, the rear panel power switch may be switched off.
18. Excessive sound pressure from earphones and headphones can cause hearing loss.
19. The battery shall not be exposed to excessive heat such as sunshine, fire or the like.

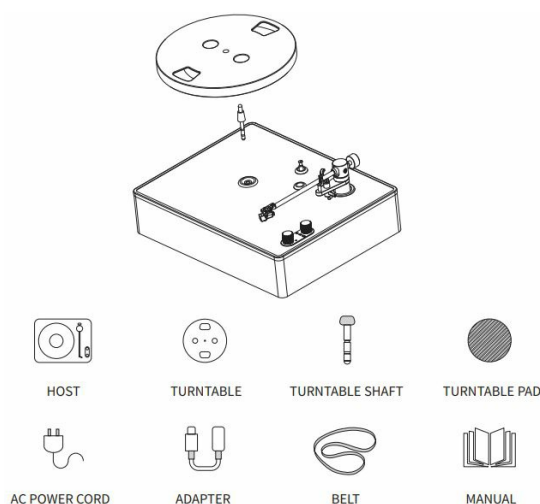
## Additional Safety Advice

1. Keep surrounding objects at least four inches away from the apparatus for adequate ventilation.
2. Ventilation openings on the apparatus should not be impeded by such items as newspaper, cloths, curtains, and the like.
3. Do not place naked flame sources near the apparatus, such as lighted candles.
4. Dispose of internal electronics in accordance with local safety and environmental regulations.
5. Do not operate the apparatus at a temperature less than 36° F / 2°C or greater than 100° F / 38° C.

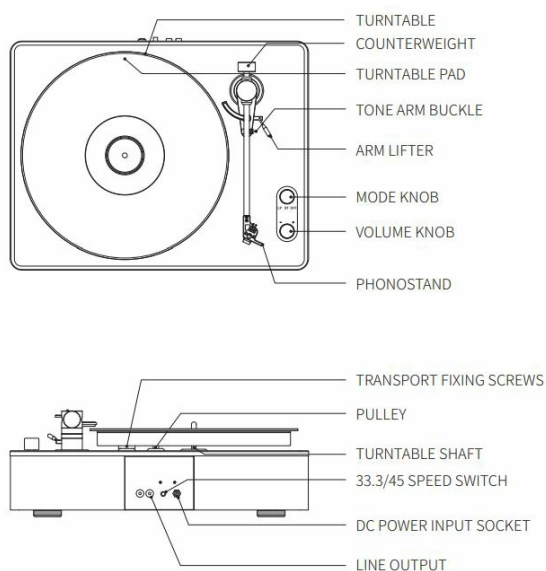
## Caution

- DO NOT REMOVE THE EXTERNAL ENCLOSURE PARTS TO EXPOSE THE ELECTRONICS. NO USER SERVICEABLE PARTS ARE INSIDE.
- IF YOU ARE EXPERIENCING PROBLEMS WITH THIS PRODUCT, CONTACT CoolGeek CUSTOMER SUPPORT. DO NOT USE THE PRODUCT UNTIL IT HAS BEEN REPAIRED.

## PACKING LIST

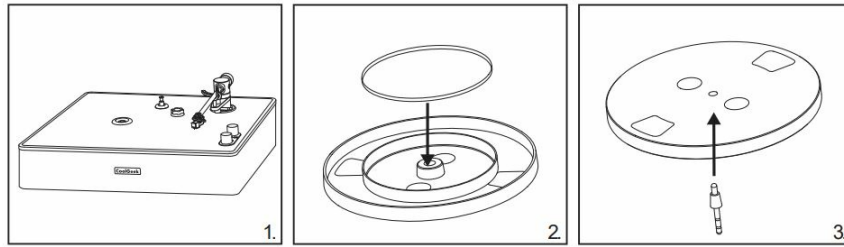


## MACHINE DESCRIPTION

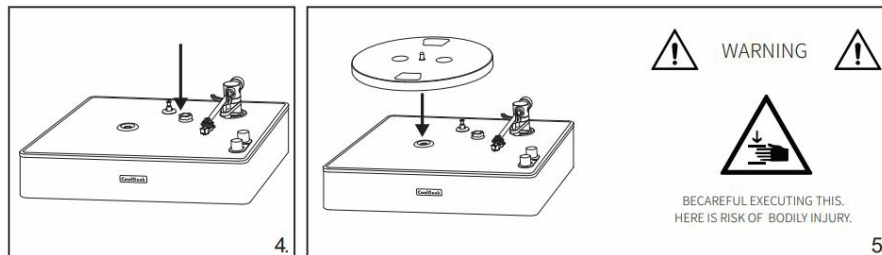


## MACHINE ASSEMBLY

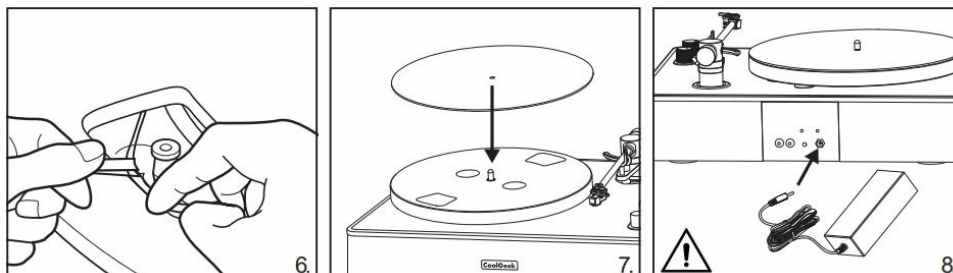
1. Place the machine on a flat table and take it out of the packing box in turn
2. Install the belt on the inner circle of the rotary table
3. Install the rotary table shaft into the rotary table shaft seat



4. Remove the transport set screw (counterclockwise) from the machine
5. Install the rotary table on the rotary table shaft



6. Install the belt on the motor pulley seat from the rotary table mounting hole
7. Place the black rubber pad flat on the rotary table
8. Insert the DC head of the adapter into the machine power base

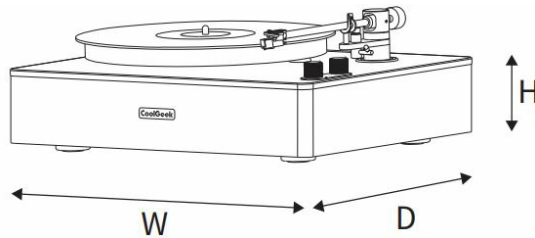


## INSTRUCTIONS FOR USE

- Plug the AC power cord of the machine adapter and the DC plug into the power base at the back of the machine (the light on the adapter is on at this time)
- Turn the mode knob to BT and hear the prompt tone Bluetooth mode. Use the following
  - Search the Bluetooth name “cs-01” on the mobile phone or Bluetooth playback device
  - Click Connect (a prompt tone is heard after the connection is successful,)
  - Click the play device to play songs, and the machine will play music
- Turn the mode knob to LP mode, hear the prompt tone phono mode, and the playing sequence of black glue is as follows
  - Place the LP on the machine disc
  - Loosen the singing arm buckle and move the singing arm onto the LP
  - Pop up the self-locking button at the back of the machine and press 33.3 turns to 45 turns
  - Put down the arm lifter, and the stylus slowly contacts the LP. At this time, the machine plays music
  - Turn the volume knob to adjust the volume

- Turn off the LP, and the playing sequence is as follows
  - Lift the arm lever so that the stylus leaves the surface of the LP
  - Put the singing arm back to the arm rest position
  - Turn the mode knob to off
  - Put the LP into the black bag or black glue rack

## TECHNICAL PARAMETER



- **WIDTH (W):** 432MM
- **DEPTH(D):** 337MM
- **HEIGHT(H):** 155MM

## PRODUCT TECHNICAL SPECIFICATIONS

- INPUT POWER DC 24V/2A
- TWEETER 2 × 1"80/10W
- MID-WOOFER 2 × 50105[652/15W]
- ROTATING SPEED 33-1/3rpm,45rpm
- BLUETOOTH 5.0
- POWER AMPLIFIER 30W+30W/80
- FREQUENCY RESPONSE 65Hz~20KHz A
- AUDIO OUTPUT RCA X1 Group
- AXIS SPACING 200mm
- EFFECTIVE ARM LENGTH 219mm
- OVER DISTANCE 19mm
- COMPENSATION ANGLE 25.25°
- MAXIMUM TONE ARM DISTORTION <0.9%
- INNER ZERO R65.74
- OUTER ZERO POINT R121.1
- NEEDLE PRESSURE 2.5-3.5g

GEEKS TECH CO.,LTD FLAT/RM 1209 12/F INTER-CONTINENTAL PLAZA GRANVILLE ROAD 94 TSIM SHA TSUI EAST KL [WWW.COOLGEEKDESIGN.COM](http://WWW.COOLGEEKDESIGN.COM)

EMAIL: [MARKETING@COOLGEEKDESIGN.COM](mailto:MARKETING@COOLGEEKDESIGN.COM)

COOLGEEK IS A REGISTERED TRADEMARK OF GEEKS TECH CO.,LTD COOLGEEK SUBSCRIBES TO A PROGRAM OF CONTINUOUS IMPROVEMENT. AS A RESULT, SOME PRODUCT FEATURES AND CHARACTERISTICS MAY CHANGE WITHOUT PRIOR NOTICE.

Documents / Resources

	<p><a href="#">CoolGeek CS-01 Bluetooth Vinyl Record Player</a> [pdf] Instruction Manual CS-01, CS-01 Bluetooth Vinyl Record Player, Bluetooth Vinyl Record Player, Vinyl Record Player, Record Player</p>
---	--