



# CoolFire BTVB-06 Bluetooth Vibrating Mouse Alarm Clock User Manual

[Home](#) » [CoolFire](#) » CoolFire BTVB-06 Bluetooth Vibrating Mouse Alarm Clock User Manual 

## Contents

- 1 [CoolFire BTVB-06 Bluetooth Vibrating Mouse Alarm Clock](#)
- 2 [POWER YOUR VIBRATOR](#)
- 3 [INSTALL THE APP](#)
- 4 [HOW TO PAIR THE VIBRATOR WITH YOUR SMARTPHONE?](#)
- 5 [USING THE APP](#)
- 6 [THE VIBRATOR](#)
- 7 [HOW TO TURN OFF THE VIBRATION](#)
- 8 [CHARGE YOUR SMARTPHONE](#)
- 9 [TROUBLESHOOTING and FAQ](#)
- 10 [Documents / Resources](#)
- 11 [Related Posts](#)

# CoolFire

**CoolFire BTVB-06 Bluetooth Vibrating Mouse Alarm Clock**

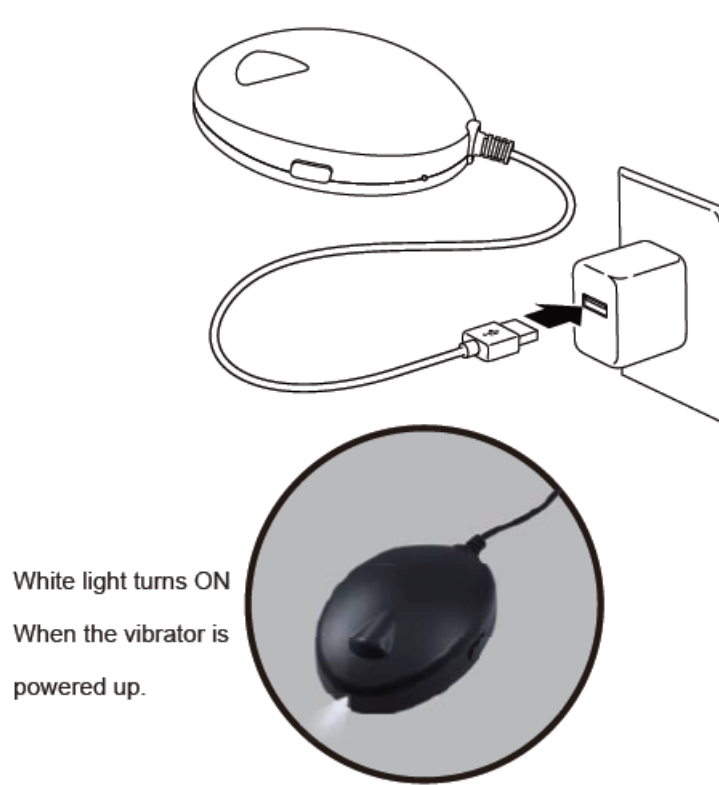


[www.TimeChant.com](http://www.TimeChant.com)

Customer service: [Support@timechant.com](mailto:Support@timechant.com)

## POWER YOUR VIBRATOR

Connect the Coolfire Bluetooth Vibrating Shaker to a USB power Adapter.



## INSTALL THE APP

### What you need ?

Any smartphone device with iOS / Android 5.0 or above

Scan the below QR code to install.

Or, search "CoolFire Vibrator Alarm" on App Store to download and install the APP.



Scan the below QR code to install.

Or, search "CoolFire Vibrator Alarm" on Google Play to download and install the APP.



## HOW TO PAIR THE VIBRATOR WITH YOUR SMARTPHONE?

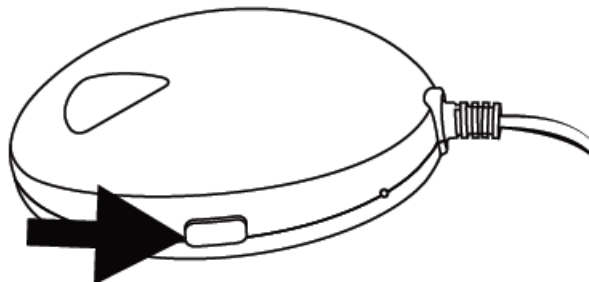
### STEP 1

Close the App and remove it from the background  
(Make sure that the Bluetooth of your smartphone is turned ON)

### STEP 2

Hold the big button for more than 10 seconds until you hear a beep sound then release the button.

**HOLD THIS BUTTON**



### STEP 3

Open the CoolFire App  
Pair the device when the pairing request pops up  
Select "Not allowed" when it asks for notification  
The App shows the time of the vibrator when the pairing is successful.

### WARNING:

Close the App and reopen it if there is any pairing problems.  
Contact [support@timechant.com](mailto:support@timechant.com) if you need help!

## USING THE APP



Add Tap the plus button to add a new alarm.



Edit Tap the button to edit an alarm.



E-mail Tap the HELP button to contact us

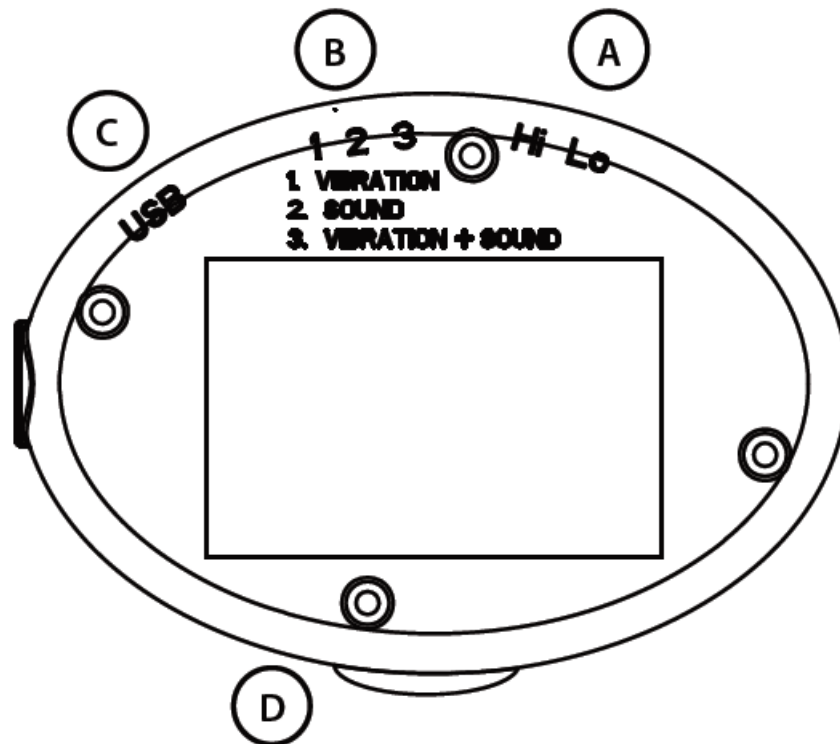


Home Tap the button back to HOME page



## THE VIBRATOR

## THE VIBRATOR



### VIBRATION STRENGTH SETTING

Set the vibration strength to L=Low, H=High

### WAKE YOU UP SETTING

1. VIBRATION ONLY
2. SOUND ONLY
3. VIBRATION + SOUND



### HOW TO TURN OFF THE VIBRATION

#### Set the Alarm to Snooze

Press the BIG BUTTON once to set the alarm to snooze

#### Set the Alarm to off

Press and hold the BIG BUTTON until the vibration stops. This sets the alarm to off



## CHARGE YOUR SMARTPHONE

## CHARGE YOUR SMARTPHONE



## CONVENIENT CHARGING

Use the USB charging port of the vibrator to charge your phone while you sleep.

## TROUBLESHOOTING and FAQ

### Why the vibrator doesn't work after I set the alarm?

- Check the "Time of the Vibrator" to see if it is the same as your smartphone (1 minute tolerance is acceptable).
- If it is not then close the App first and then hold the big button of the vibrator for 10 seconds until you hear a beep sound.
- After that open the App to make a connection with your vibrator.
- The time of the vibrator will sync with the smartphone and the vibrator should work with your alarm time settings.

### Why the time of the vibrator is different from my smartphone?

Refer to the above question.

### **Can I use the vibrator without the smartphone?**

Yes. The vibrator saves all your alarm settings that come from the smartphone app and then it can work without the presence of your smartphone.

### **How can I use the vibrator with my second smartphone?**

Follow the “HOW TO PAIR THE VIBRATOR WITH YOUR SMARTPHONE?” to switch the vibrator to work with your second smartphone. You need to do the same when you switch it back to work with your primary phone.

## **FCC**

### **FCC Warning:**

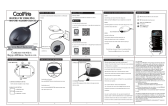
Changes or modifications not expressly approved by the party responsible for compliance could void the user's authority to operate the equipment. This equipment has been tested and found to comply with the limits for a Class B digital device, pursuant to Part 15 of the FCC Rules. These limits are designed to provide reasonable protection against harmful interference in a residential installation. This equipment generates uses and can radiate radio frequency energy and, if not installed and used in accordance with the instructions, may cause harmful interference to radio communications. However, there is no guarantee that interference will not occur in a particular installation. If this equipment does cause harmful interference to radio or television reception, which can be determined by turning the equipment off and on, the user is encouraged to try to correct the interference by one or more of the following measures:

- - Reorient or relocate the receiving antenna.
- - Increase the separation between the equipment and receiver.
- - Connect the equipment into an outlet on a circuit different from that to which the receiver is connected.
- - Consult the dealer or an experienced radio/TV technician for help.

This device complies with part 15 of the FCC Rules. Operation is subject to the following two conditions: (1) This device may not cause harmful interference, and (2) this device must accept any interference received, including interference that may cause undesired operation.

The device has been evaluated to meet general RF exposure requirement.

## **Documents / Resources**



[CoolFire BTVB-06 Bluetooth Vibrating Mouse Alarm Clock](#) [pdf] User Manual  
BT-VH02BK, BTVH02BK, 2A3XL-BT-VH02BK, 2A3XLBTVH02BK, Bluetooth Vibrating Mouse Alarm Clock, BTVB-06 Bluetooth Vibrating Mouse Alarm Clock