

COOLER MASTER NR200P V2 MAX Mini ITX PC Case



COOLER MASTER NR200P V2 MAX Mini ITX PC Case Installation Guide

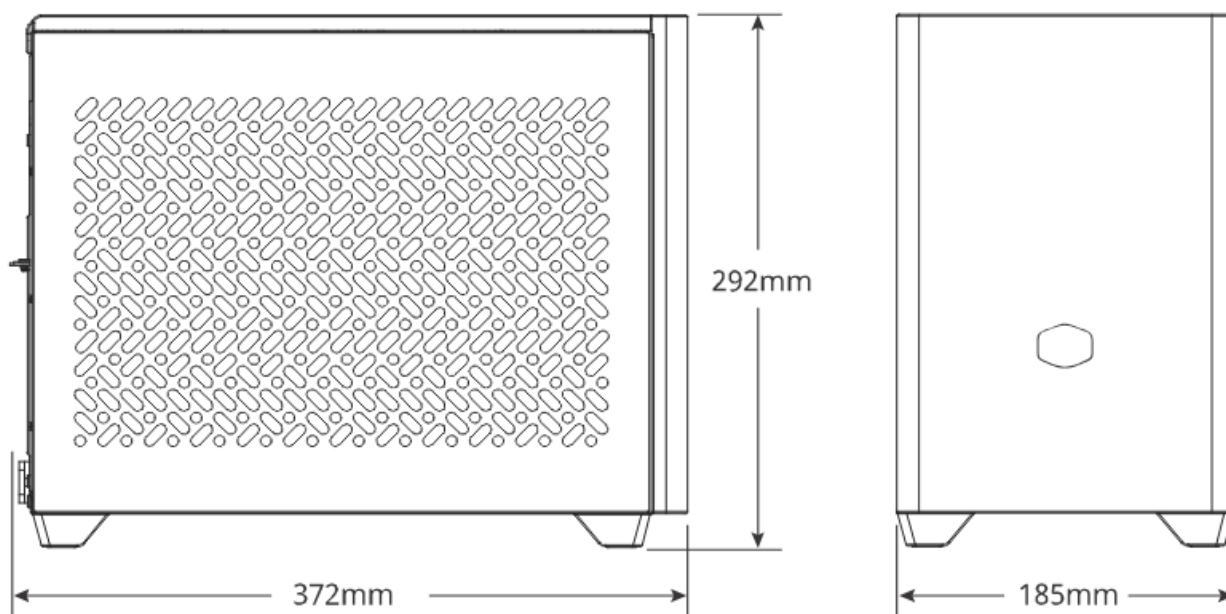
[Home](#) » [COOLER MASTER](#) » COOLER MASTER NR200P V2 MAX Mini ITX PC Case Installation Guide 

Contents

- [1 COOLER MASTER NR200P V2 MAX Mini ITX PC Case](#)
- [2 ACCESSORY BOX](#)
- [3 REMOVE PANELS](#)
- [4 INSTALL MOTHERBOARD](#)
- [5 INSTALL CPU BLOCK: INTEL](#)
- [6 INSTALL 2.5" & 3.5" DRIVES](#)
- [7 GPU BRACKET](#)
- [8 INSTALL GPU](#)
- [9 INSTALL PANELS](#)
- [10 SPECIFICATIONS](#)
- [11 WARRANTY INFORMATION](#)
- [12 Safety Instructions](#)
- [13 Warranty](#)
- [14 Documents / Resources](#)
 - [14.1 References](#)
- [15 Related Posts](#)

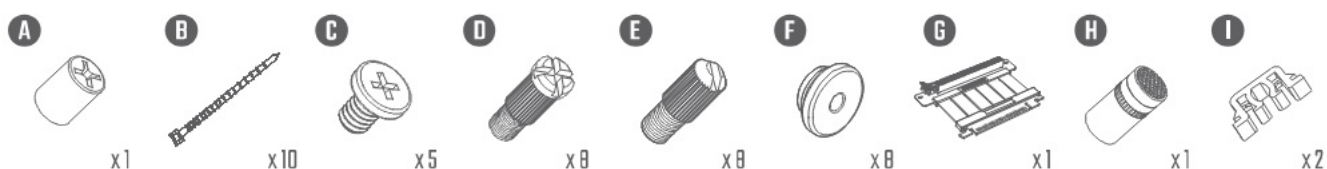


COOLER MASTER NR200P V2 MAX Mini ITX PC Case

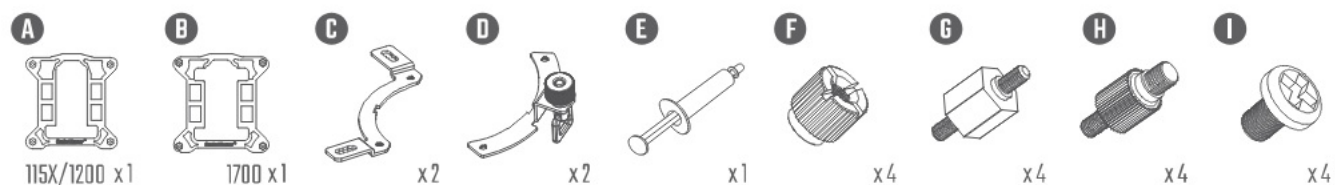


ACCESSORY BOX

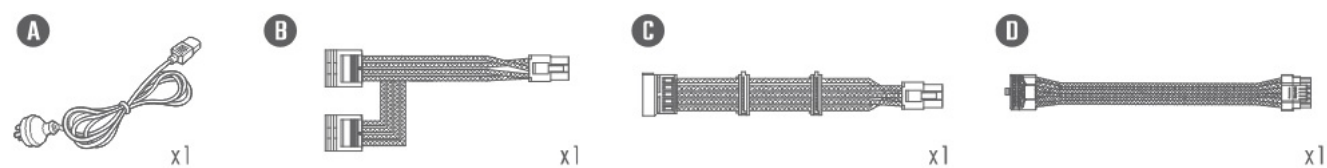
CASE



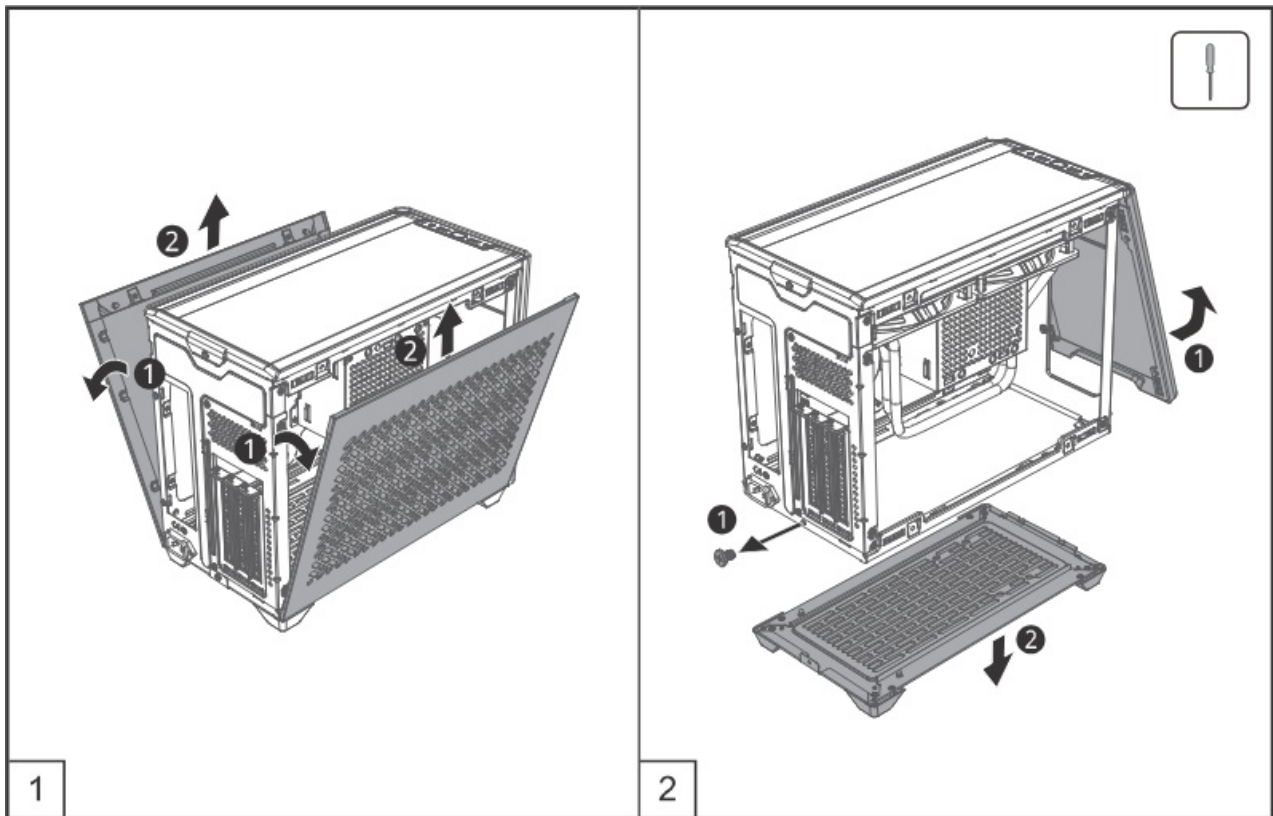
COOLING



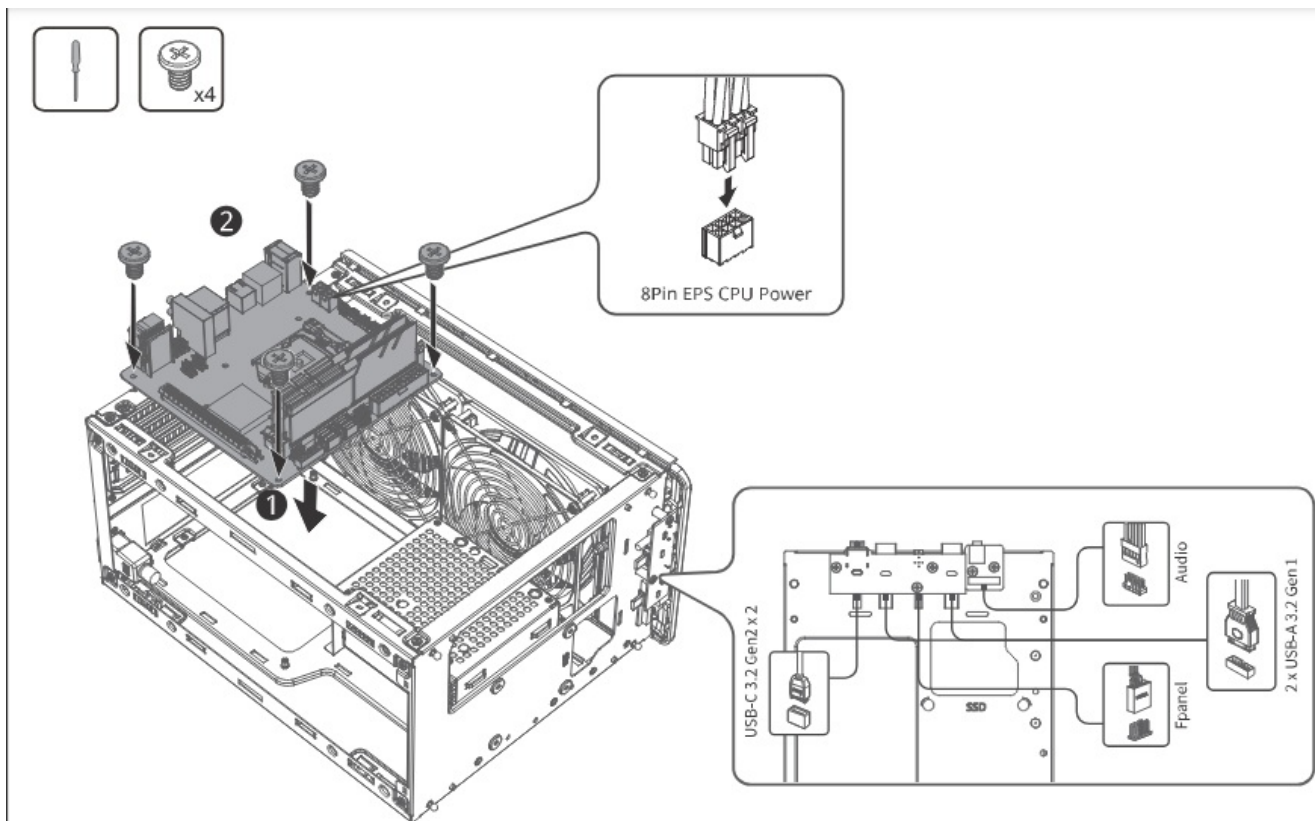
PSU



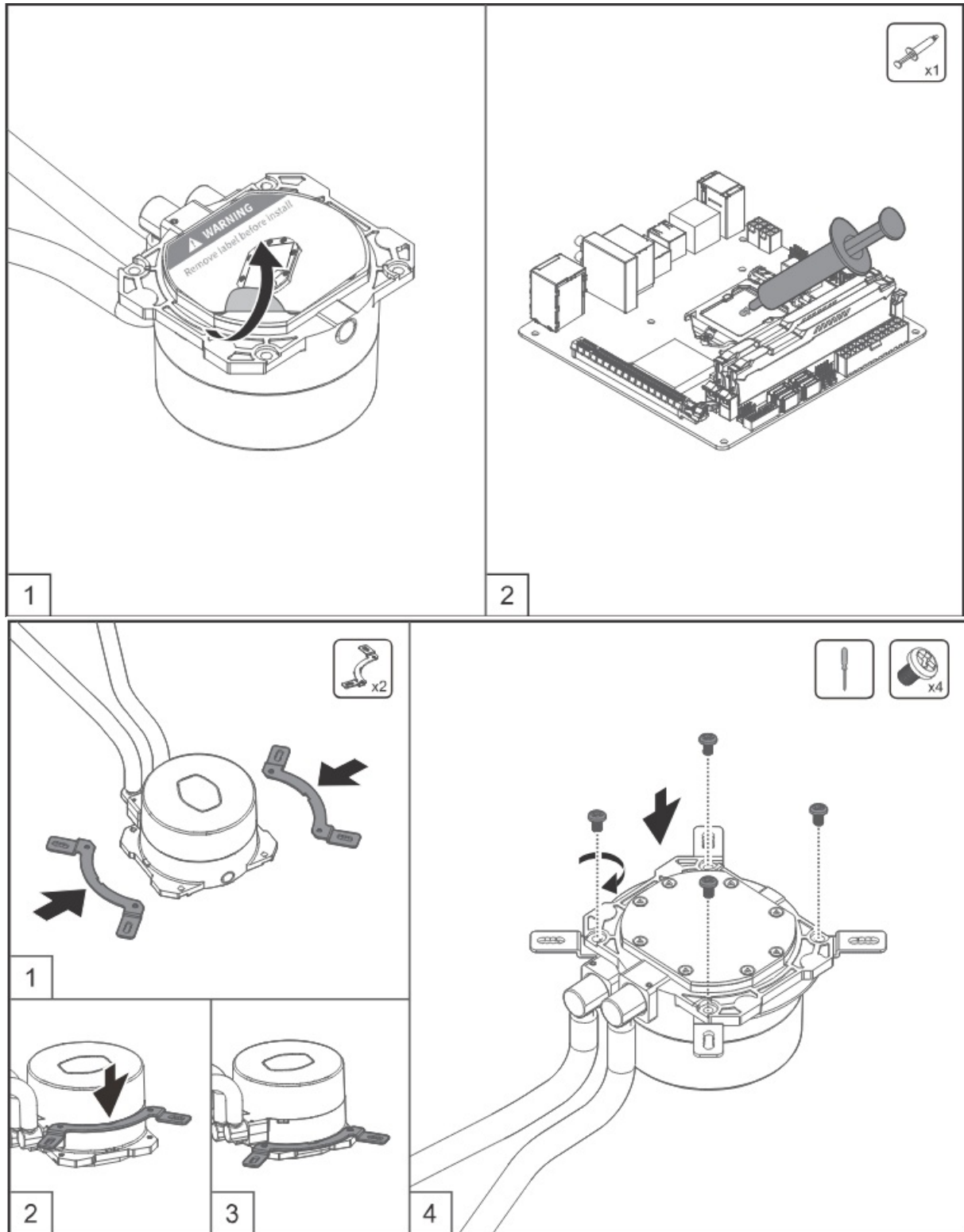
REMOVE PANELS



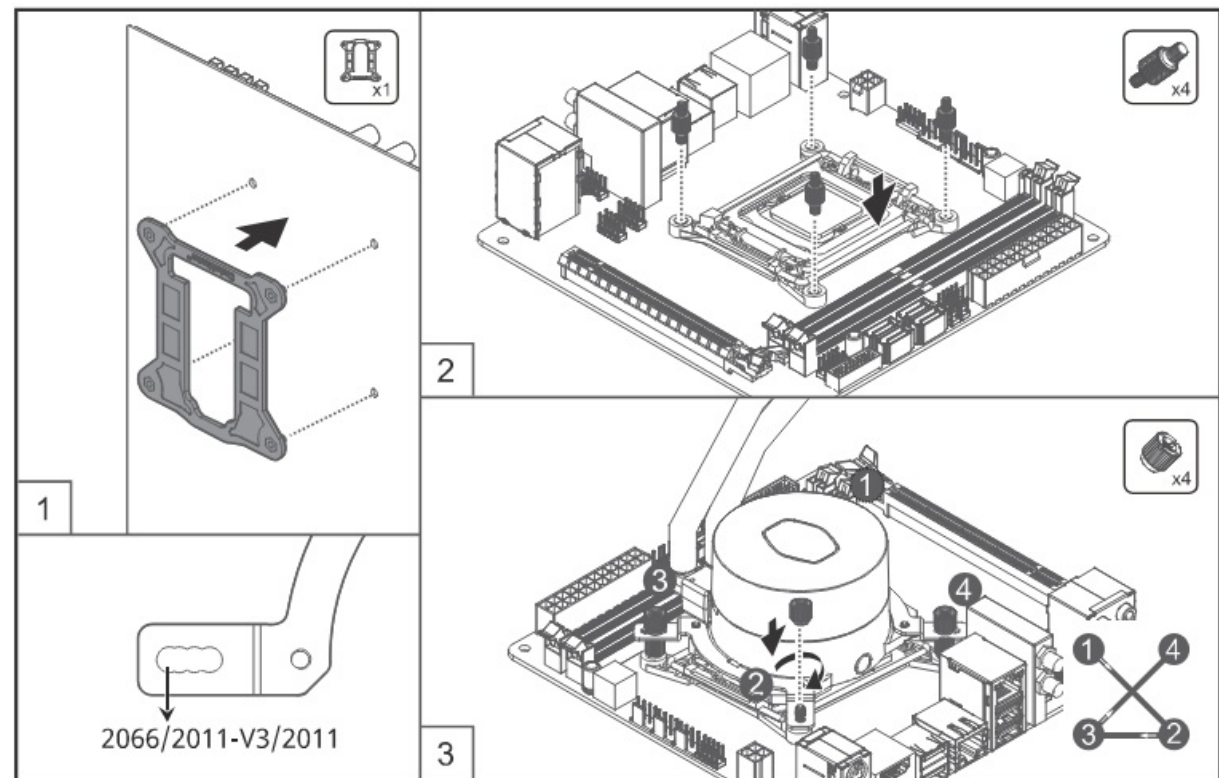
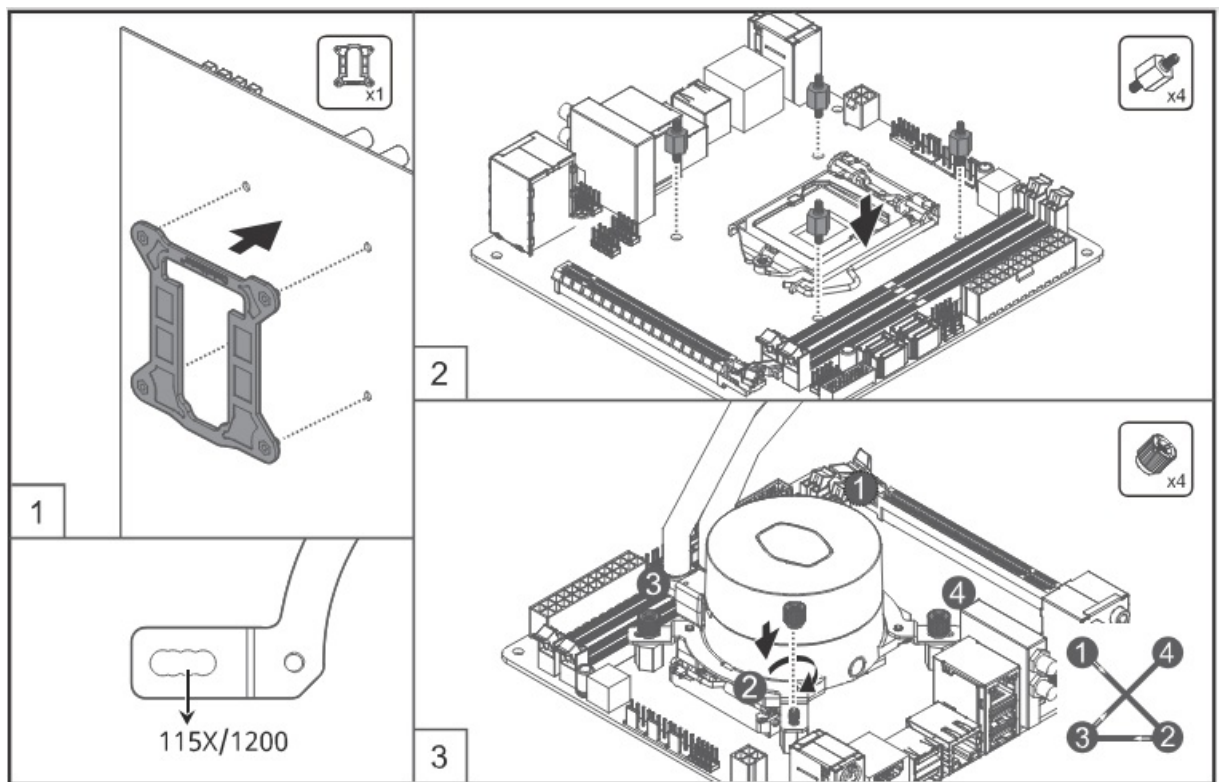
INSTALL MOTHERBOARD

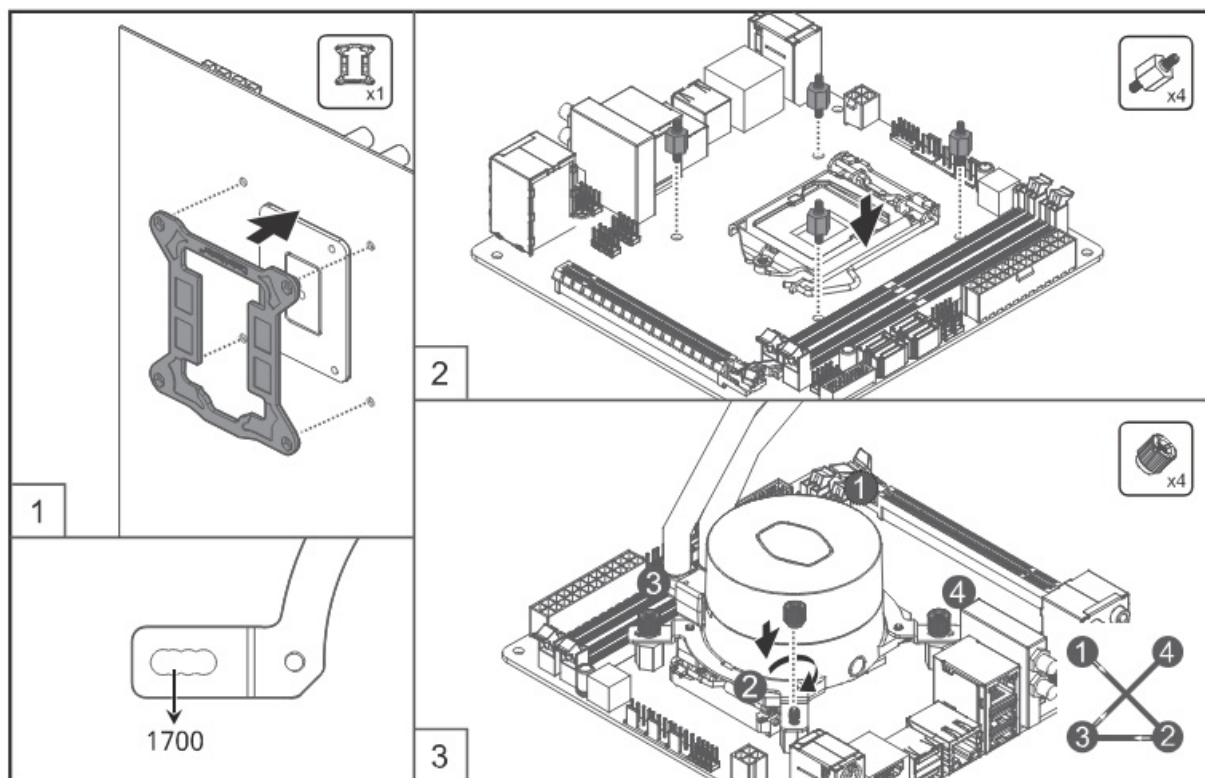


INSTALL CPU BLOCK: INTEL

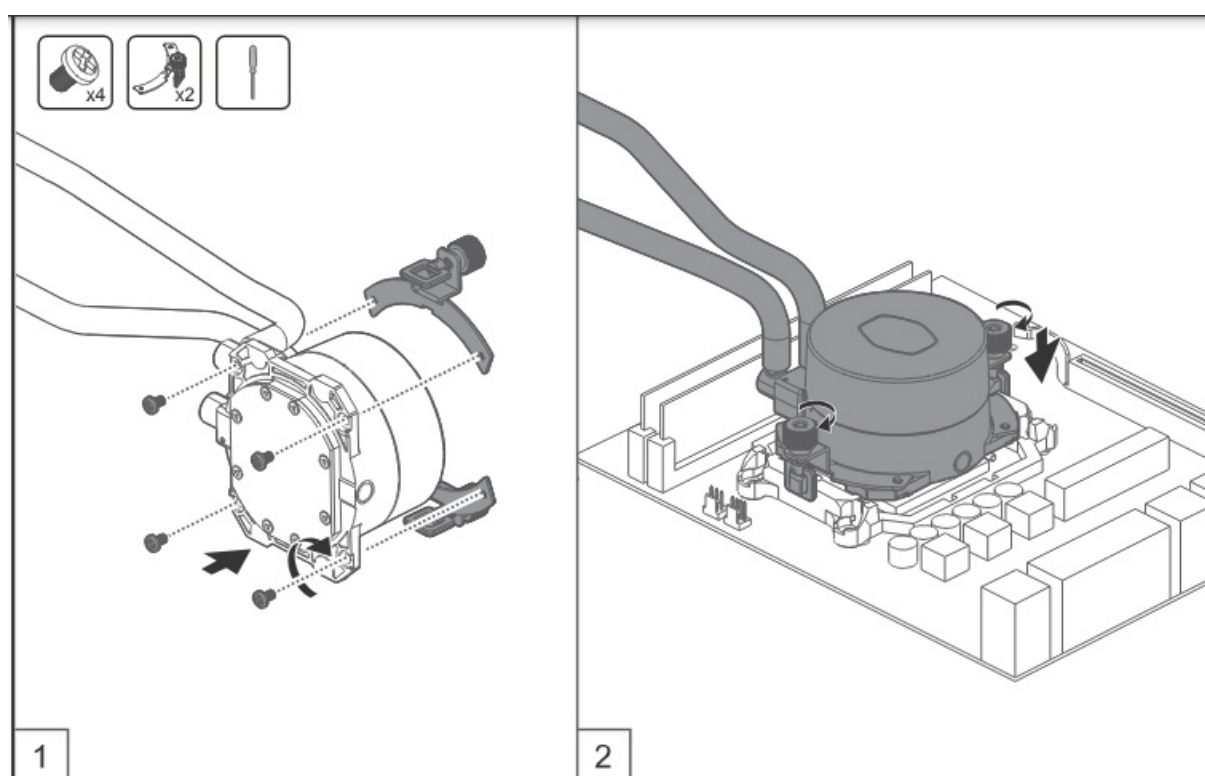


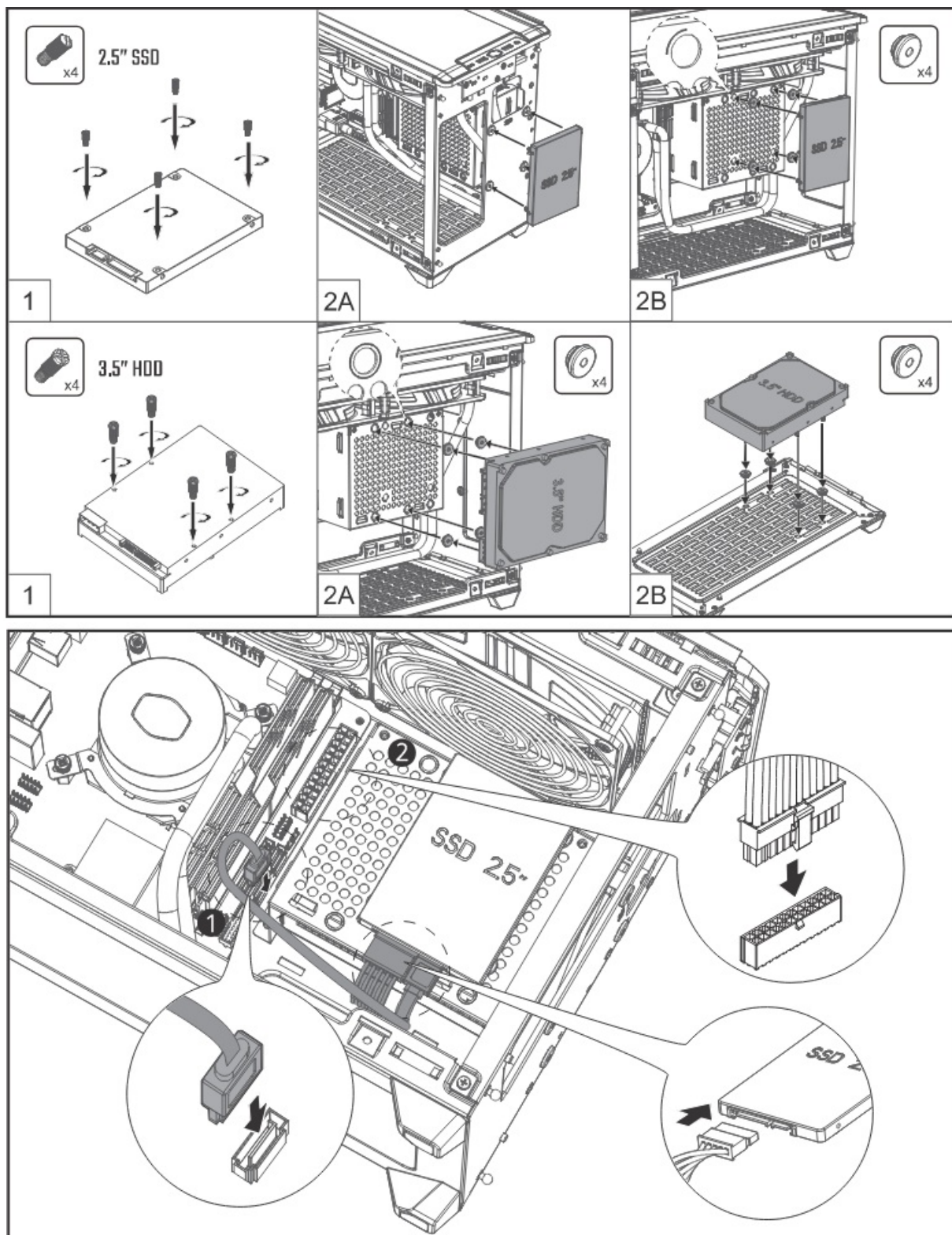
INSTALL 2.5" & 3.5" DRIVES



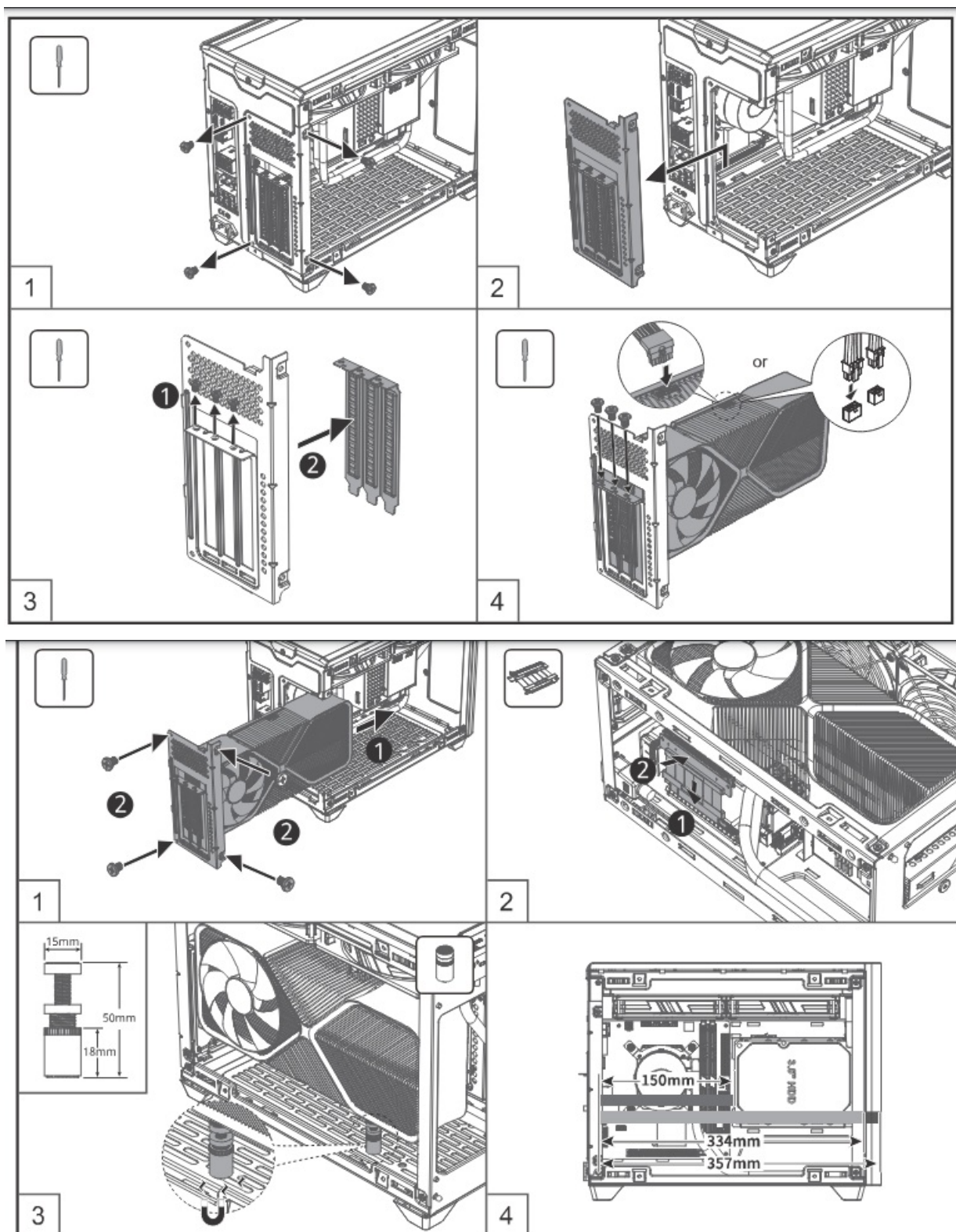


GPU BRACKET

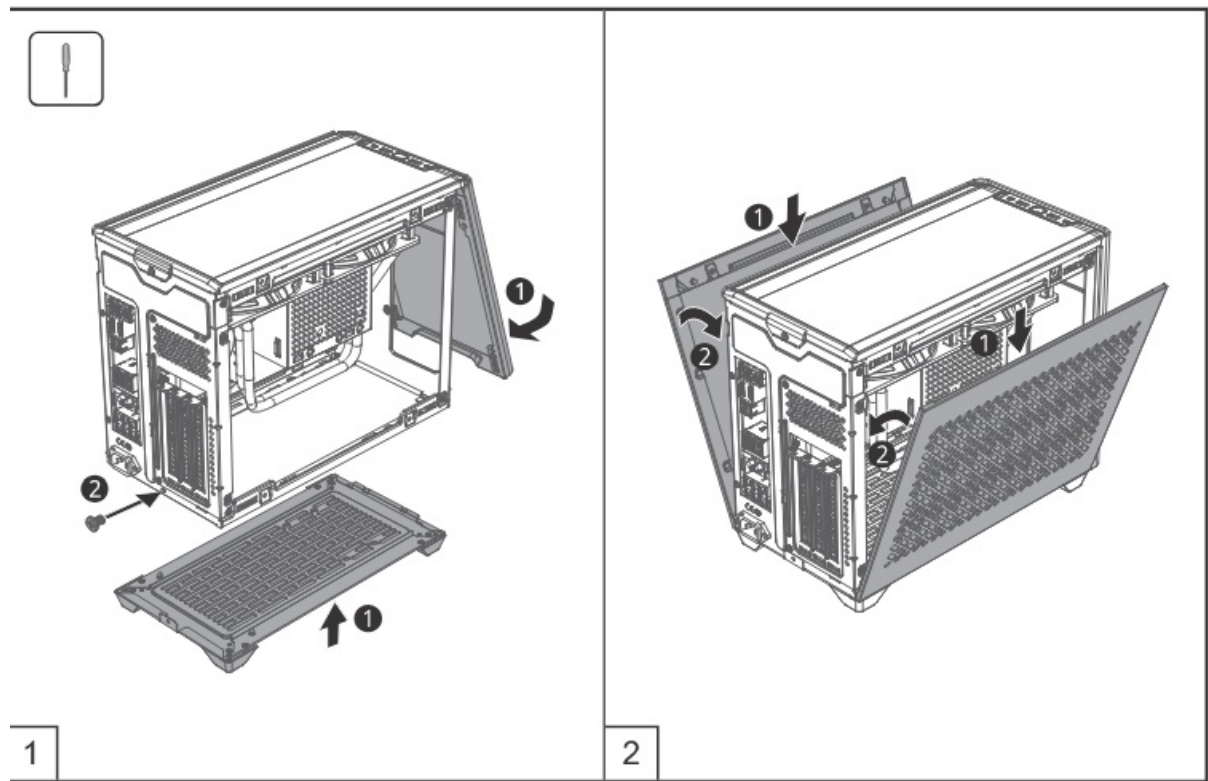




INSTALL GPU



INSTALL PANELS



SPECIFICATIONS

CASE

Dimensions (L x W x H)		372 x 185 x 292mm
		14.64 x 7.28 x 11.50 inch
Motherboard Support		Mini-ITX. 1111ax. size: 170 x 180mm
Expansion S101s		3
Fan Support1	Top	2 x 120mm / 2 x 140mm
	Bottom	2x120mm (1 X max 15mm, w/o3.S HDD at the bottom)
Liquid Cooling Support	Top	120/140/240/ 280mm
Compatibility (maximum)	CPU Cooler	67mm/2.64inch
	Power Supply	130mm/5.12inch
	Graphics Card	Exceed front bracket (Incl. power connector) : L: 357mm, H: 160mm, W: 73mm Not exceed front bracket (incl, power connector) L: 334mm. H: 160mm, W: 80mm
Power Supply		SFXSFX·L

SPECIFICATIONS CASE

Exterior Color		Block
CPU Socket	Intel	LGA 2066 / 2011-vJ / 2011 / 1200 / 1151 / 1150 / 1155 / 1156 / 1700
	AMO	AM4 / AM3+ / AM3 / AM2+, / AM2 / FM2+. / FM2/FMI
Radiator	Material	Aluminum
	Dimensions (LxWxH)	318 x140 x 27.2 mm
		10.9 x4.7 x 1.1 inch
Pump	Dimensions (LxWxH)	79.9x76x47mm
		3.15 x 3x 1.85 inch
	MTTF (Hours)	70,000 hours
	Noise Level (dBA)	<10dBA
	Connector	3-Pin
	Rated Voltage (VOC)	12
	Power Consumption (W)	2.36W
TOP(W)		230

POWER SUPPLY

Form Factor	SFX	
Fan Type	92mm FOB Fan	
Efficiency	90..	
Operating Temperature	0-50°C	
Protections	OVP /OPP/ SCP/ OCP / UVP /OTP/ Surg and Inrush Protection	
Regulatory	TUV, cTUVus, CE, BSMI, FCC, CCC, EAC, RCM, CB, UKCA	
Connectors	ATX 24 Pin x1	
	EPS 4+.4 Pin x1	
	PCI•e 6•2 Pin x2	
	SATA x2	
	Peripheral 4 Pin x1	
	12VHPWRK1	

FANS

Dimensions (L x W x H)	140 x 140 x 25mm/ 5.5 x 5.5 x 1 inch
LED Type	Non-LED
Speed (RPM)	650-1400RPM \pm 5%
Airflow (CFM)	67CFM (Max)
Noise Level (dBA)	10-27 dBA
Pressure (mm H2O)	2.25 mm H2O (Max)
Life Expectancy (Hours)	160,000 hours
Power Connector	4-Pin
Rated Voltage (VOC)	12
Rated Current (A)	0.15A
Included Splitter Cable	2to1 4-pin PWM splitter

AC INPUT	100-240V~ , 12-6A , 50-60Hz				
DC OUTPUT	+5V	+3.3V	+12V	-12V	+5VSB
	20A	20A	70.8A	0.3A	3A
TOTAL POWER	120W		849.6W	3.6W	15W
	850W				

- Cooler Master guarantees that this device is free of defect in material and workmanship, and provides a two-

year limited hardware warranty for the device commencing from the date of purchase. Please keep your receipt for proof of purchase. This product is designed for computer usage only.

- Using this device in any other capacity voids the warranty. If you are not familiar with computer hardware installation, please ask for professional assistance.
- The warranty offered covers normal use. Defect or damage that result from improper operation, storage, misuse or abuse, accident or neglect, which are not the fault of Cooler Master, are excluded from warranty coverage. Note: the warranty is voided by removal or alternation of product or parts identification labels.
- All OEM/bulk packaging product come with one year limited warranty
- In case of conflict between the warranty provided by the country of point of sale and this manual, the warranty of the actual country of point of sale shall be the prevailing document. *In case of malfunction of electronic components or need of accessories purchase during the warranty period, please return to the original store of purchase.

WARRANTY INFORMATION

Exclusion of damages

COOLER MASTER'S LIABILITY IS LIMITED TO THE COST OF REPAIR OR REPLACEMENT OF THE PRODUCT, COOLER MASTER SHALL NOT BE LIABLE FOR:

- DAMAGE TO OTHER Properly CAUSED BY ANY DEFECT IN THE PRODUCT, DAMAGES BASED UPON INCONVENIENCE, LOSS OF USE OF THE PRODUCT, LOSS OF
- TIME, LOSS OF PROFITS, LOSS OF BUSINESS OPPORTUNITY, LOSS OF GOODWILL, INTERFERENCE WITH BUSINESS RELATIONSHIPS OR OTHER COMMERCIAL LOSS,

EVEN IF ADVISED OF THEIR POSSIBLY OF SUCH DAMAGES.

- ANY OTHER DAMAGES, WHETHER INCIDENTAL, CONSEQUENTIAL OR OTHERWISE
- ANY CLAIM AGAINST THE CUSTOMER BY ANY OTHER Party

Warranty Information:

If the goods is found with reasonable defect within the period of (refer to Table A,) starting on the first day of purchase (with proof of invoice), this is what you must do, to claim the warranty from the above address.

Procedures:

1. Consumers should return to the shop where he/she has bought the goods, After confirming with the shop with a valid invoice, they may approach the distributor for RMA claim.
2. After confirmed by the distributor that the goods was damaged due to natural causes, replacement and repair will be done by distributor (including brand new or refurbished goods)
3. All faulty goods must return to the distributor, expenses for returning the faulty goods will be covered by the consumer, and distributor will cover the cost involved in the transporting of parts or repaired goods to the consumer.

Regarding all the expenses incurred in making the claim, and this is how you would claim:

1. Within the valid warranty date, starting from the first day of issuing invoice, Retail shops will assist in confirmation with distributor for the consumer for the following.
 - If the damage was caused by the consumer, then the consumer should cover all expenses in fixing the product, if the product still can't be fixed, we would suggest consumer in buying a brand new product.
 - Product defect caused under natural use, expenses will be covered by the distributor.
2. Faulty products with expired warranty dates, we would suggest consumer to purchase a brand new products, without undergoing for repairs

Table A:

- Cooler Master Products
- Please check your user manual for the exact warranty period terms for products that are not shown below.
- For more warranty information, please visit our official website:

<http://www.coolermaster.com/service/warranty.html>

Chassis

Product Name	Warranty Term
All Chassis Series (Only Electronic Parts)	2year
C+P (Chassis+ PSU)	1 year

Safety Instructions

- Do not open the power supply unit as this can lead to serious injury or death.
- Do not insert objects into spinning fan. This will damage the power supply unit and can lead to injuries.
- Do not use excessive force when attaching the power connectors to the power supply unit. When correct connectors are used, excessive force is not need to install them.
- Keep power supply unit in dry environments away from humidity. If the power supply unit gets wet, immediately remove the AC power plug from the wall and the power supply unit. For your own safety, it is recommended that you do not use the power supply unit again after getting it wet.
- Avoid using low quality extension cables for the power supply side connectors as this can cause the cables to melt and even lead to fire.
- This power supply unit has been tested for PC usage only. We cannot guarantee operation or safety performance when used for other applications.

Installing the Power Supply Unit

1. Make sure the main power switch is turned off before installing the power supply unit.
2. Secure the power supply unit within the PC case enclosure with 3 or 4 screws for grounding and stability purposes.

3. Connect the power connectors according to the motherboard, graphics card, and other device user guides that will be used in the system.
4. Connect the AC power connector.
5. Switch on the power switch.

Troubleshooting

If your system does not turn on after installing the power supply, please follow the troubleshooting guide as listed below:

1. Make sure the AC power cord is correctly and firmly connected on both sides.
2. Make sure the power switch is turned on.
3. Make sure the main power connector and +12V power connectors are correctly connected to the motherboard.
4. If the power supply does not function properly, please contact our customer support immediately

Warranty

- Cooler Master guarantees this device to be free of defects in material and workmanship and provide a minimum 1 O -year hardware limited warranty for the power supply on the date of purchase. Please register on our official website to activate your limited warranty. This product was designed and intended for computer usage only.
- Using this device for other applications will void the warranty. If you are not familiar with computer hardware installation, please ask a professional for assistance.
- This warranty only applies to the power supply unit and does not include accessories or connected components.
- This warranty only applies to damage caused by normal use and is void if it is determined that the device was damaged because of abuse, alteration, misuse, negligence, incorrect voltage supply, air/water pollution, accidents, or natural disasters.
- In the event of any defects within the warranty period, please return product to the dealer or retailer from whom you purchased for a replacement/repair.
- Please contact our customer service team for any technical or product related questions.

Limited warranty period: <http://www.coolermaster.com/service/warranty.html>

- China – Cooler Master China
- Room 112, Building 9, No. 327, Songjin Road, Jinshanwei Town, Jinshan Dist., Shanghai City, China
- Tel: +86-21-51872177
- Europe – Cooler Master Europe B.V. Lodewijkstraat 1b, 5652AC Eindhoven, The Netherlands
- Tel: +31-(0)40-702-0900
- North America – Cooler Master NA 1 N Indian Hill Blvd Suite D200 Claremont, CA 91711 USA
- Tel: +1-[888-624-5099](tel:888-624-5099)
- South America E-mail: Soporte_Latam@coolermaster.com.tw

CoolerMaster website For the most updated information, Please visit our official website: www.coolermaster.com




Technical Support account.coolermaster.com



512006670-GP Ver 1.0: 2024/01 The color and specification are subject to be changed without further notification. Please visit our website for updated information: www.coolermaster.com ©2024 Cooler Master Technology Inc. All Rights Reserved. All trademarks are registered to their respective owners.

Documents / Resources

	COOLER MASTER NR200P V2 MAX Mini ITX PC Case [pdf] Installation Guide NR200P V2 MAX Mini ITX PC Case, NR200P V2 MAX, Mini ITX PC Case, ITX PC Case, PC Case, Case
--	--

References

- [User Manual](#)

[Manuals+](#), [Privacy Policy](#)

This website is an independent publication and is neither affiliated with nor endorsed by any of the trademark owners. The "Bluetooth®" word mark and logos are registered trademarks owned by Bluetooth SIG, Inc. The "Wi-Fi®" word mark and logos are registered trademarks owned by the Wi-Fi Alliance. Any use of these marks on this website does not imply any affiliation with or endorsement.