




CONTROLbyWEB X-422 Davis Weather Suite Controller User Guide

[Home](#) » [CONTROLbyWEB](#) » CONTROLbyWEB X-422 Davis Weather Suite Controller User Guide 

Contents

- [1 CONTROLbyWEB X-422 Davis Weather Suite Controller](#)
- [2 Remove the Davis Board](#)
- [3 Install the X-422](#)
- [4 Accessing the Setup Pages](#)
 - [4.1 FACTORY DEFAULT SETTINGS](#)
- [5 How To Safely Ground the X-422](#)
- [6 Documents / Resources](#)
 - [6.1 References](#)
- [7 Related Posts](#)

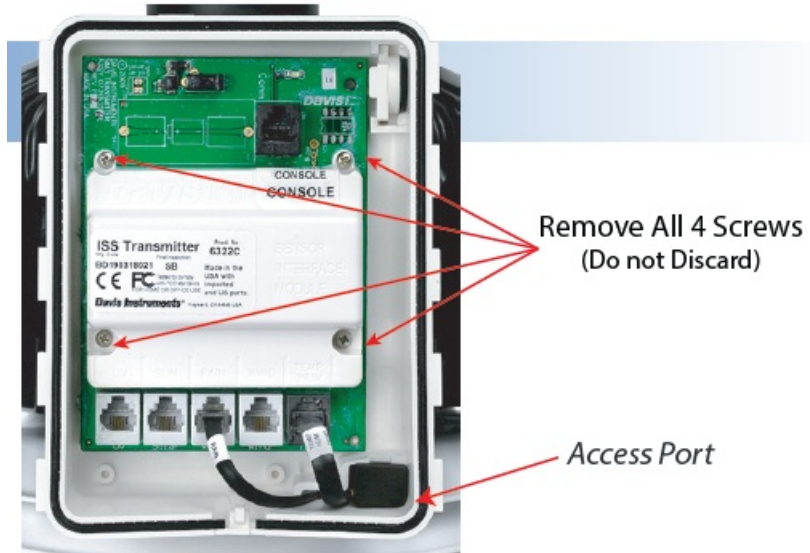


CONTROLbyWEB X-422 Davis Weather Suite Controller



Remove the Davis Board

ISS Transmitter Compartment



1. Install the Davis Instruments 1Ss. Ensure that all cables are routed to the ISS transmitter compartment.
2. Install a grounded cable to the base of the weather station structure.
3. Remove the four mounting screws that secure the ISS Transmitter Board, and remove the cover and board.
4. Keep the screws and cover for later use.

Install the X-422



1. Install the X-422 board (Ethernet port located towards the top) and cover with the four mounting screws.
2. Insert Ethernet cable and/or power supply cable through the access port.
3. Insert and connect each of the sensor cables to their respective modular connector.
4. Install optional auxillary/barometric pressure sensors inside the enclosure and attach the leads to the terminal connector.
5. Connect the Ethernet cable to a grounded surge protector and install a grounded wire to the negative voltage input (Vin-) terminal connector. See reverse side for required grounding instructions.

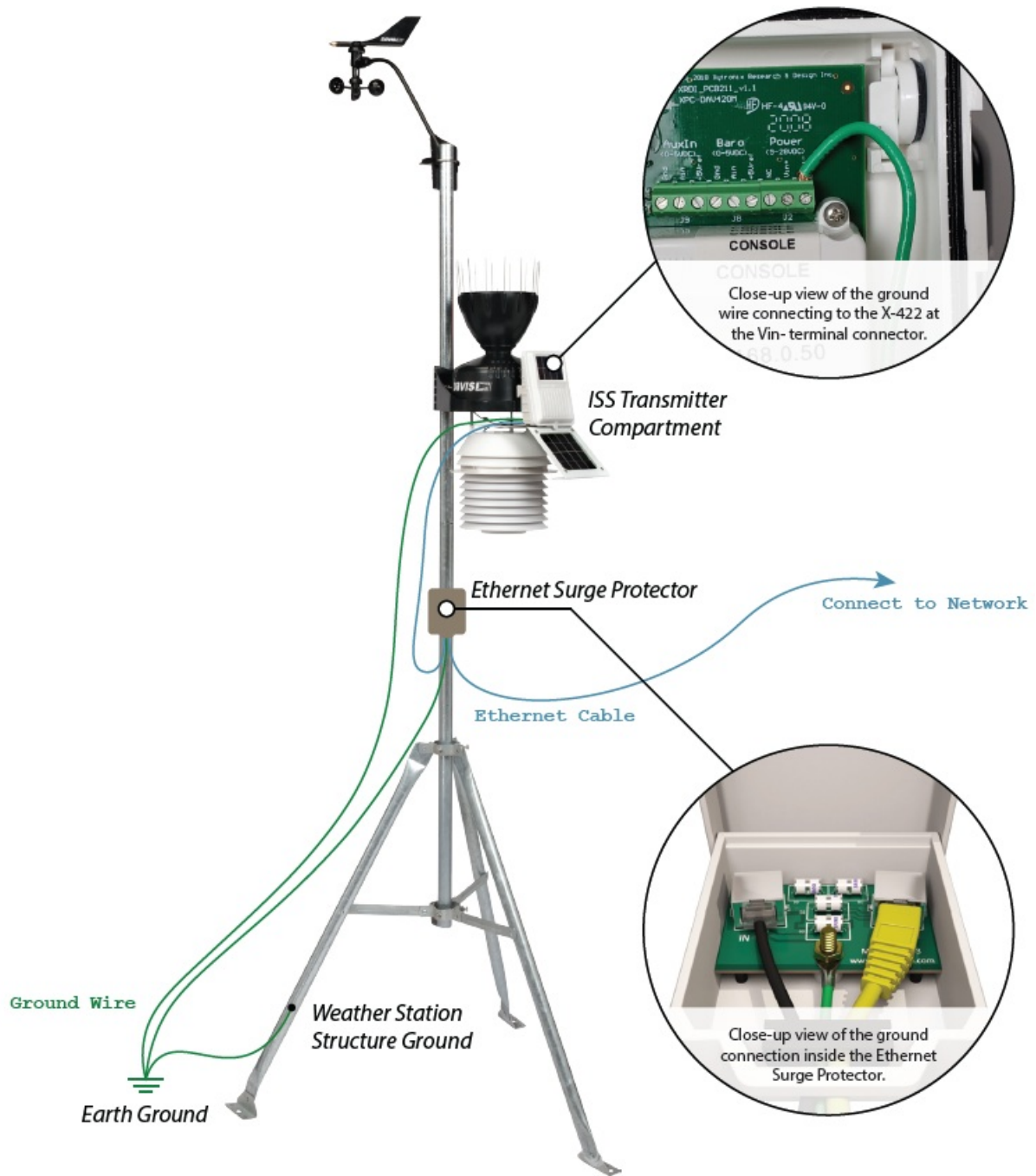
Accessing the Setup Pages

1. Connect the module to power using POE and/or 9-28VDC and connect to a network.
2. Set up the computer on the same network as the module. To do this, set the IP address of the computer to 192.168.1.50 with a netmask of 255.255.255.0
3. Configure the module using a web browser by typing the following into the address bar of a web browser:
<http://192.168.1.2/setup.html>
4. Log in to the setup pages using the default username: admin and default password: web relay (alllower case).
5. Set the permanent IP address in the Network tab.
6. Restart the module (remove power, re-apply power). After restarting the module, set the computer back to its original settings and access the module at its new IP address.

FACTORY DEFAULT SETTINGS

- **IP Address:** 192.168.1.2
- **Subnet Mask:** 255.255.255.0
- **Weather Monitor Web Address:** <http://192.168.1.2>
- **Setup Web Address:** <http://192.168.1.2/setup.html>
- **Setup Username:** admin
- **Setup Password:** webrelay (alllower case)
- **Weather Monitor Password:** (Optional)

How To Safely Ground the X-422



1. Ensure that your weather station structure is properly connected to earth ground. Follow all local codes and work with licensed professionals.
2. Inside the ISS Transmitter Compartment, connect the X-422 negative voltage input (Vin-) terminal connector to ground.
3. Mount an Ethernet surge protector with an appropriate outdoor rated housing to the weather station mount, as close as possible to the ISS Transmitter Compartment.
4. Connect the Ethernet surge protector to ground. Note: failure to use or properly ground the surge protector will void the warranty.
5. Connect an Ethernet cable from the X-422 to the Ethernet surge protector.
6. Connect an Ethernet cable from the network or POE switch to the Ethernet surge protector.
7. If using shielded network cable, connect only one end of the shield to ground.

Model and mount structure shown may not be representative of your exact weather station.

Xytronix Research & Design, Inc.
Nibley, Utah, USA

© 2019-2020 Xytronix Research and Design, Inc.

For users manual, please visit: www.ControlByWeb.com/support/

Documents / Resources

| | |
|---|---|
|  | <p>CONTROLbyWEB X-422 Davis Weather Suite Controller [pdf] User Guide X-422, Davis Weather Suite Controller, X-422 Davis Weather Suite Controller</p> |
|---|---|

References

- [Customer Support | ControlByWeb](#)

Manuals+