



Control Solutions VFC5000-TP Freezer Vaccine Data Logger Kit Instruction Manual

[Home](#) » [CONTROL SOLUTIONS](#) » Control Solutions VFC5000-TP Freezer Vaccine Data Logger Kit Instruction Manual



Contents [[hide](#)]

- 1 VFC5000-TP Freezer Vaccine Data Logger Kit
- 2 STEP 1 Install the Probe in the fridge/freezer
- 3 STEP 2 Software Download
- 4 STEP 3 Set-up and Starting the VFC5000-TP
- 5 STEP 4 Stopping the logger and downloading data
- 6 Documents / Resources
 - 6.1 References
- 7 Related Posts

VFC5000-TP Freezer Vaccine Data Logger Kit

When you receive your VFC5000-TP kit you will have all you need to get started.

The Kit includes:

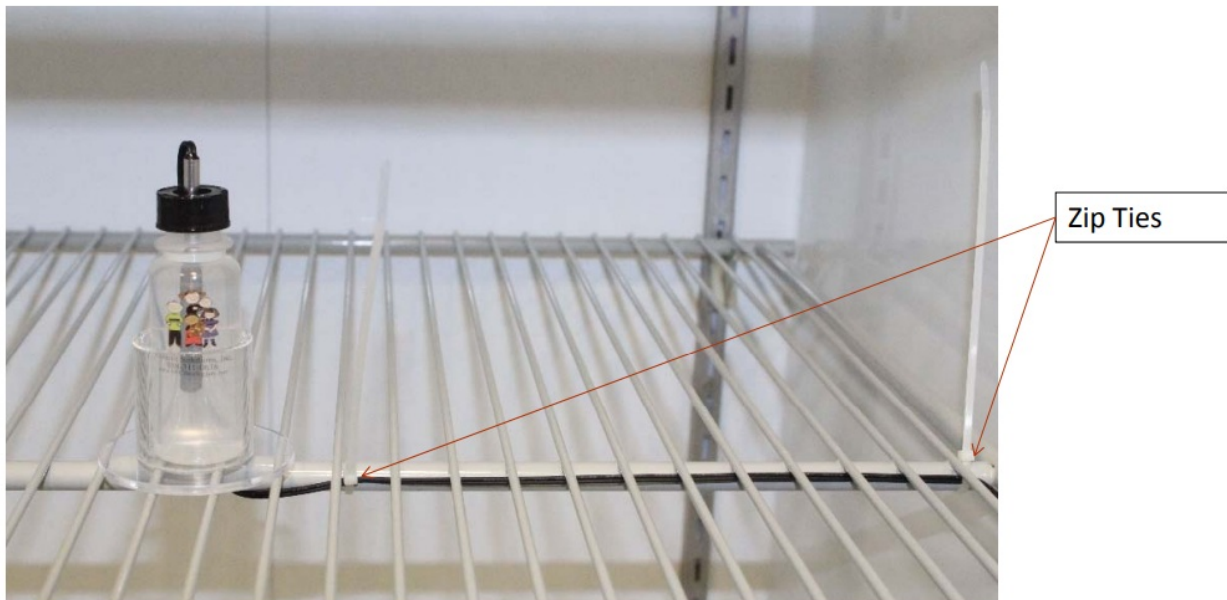
- VFC5000-TP data logger
- Stainless steel temperature sensor with 10' of cable in a shatter-proof glycol filled bottle
- Acrylic stand so your glycol bottle can stand up in the fridge or freezer
- Mounting cradle to be attached to the side or front of your fridge/freezer
- Adhesive backed cable tie mounts with tie wraps so you can secure the cable to the side of the fridge/freezer
- One extra battery. The data logger comes with a battery installed (put the extra battery in a secure spot so you can find it in approx. 1 year)
- NIST traceable Certificate of Calibration compliant to ISO 17025;2005
- NIST traceable Certificate of Calibration compliant to ISO 17025;2005
- CD with instructions for start-up

Your VFC5000-TP will look like this:

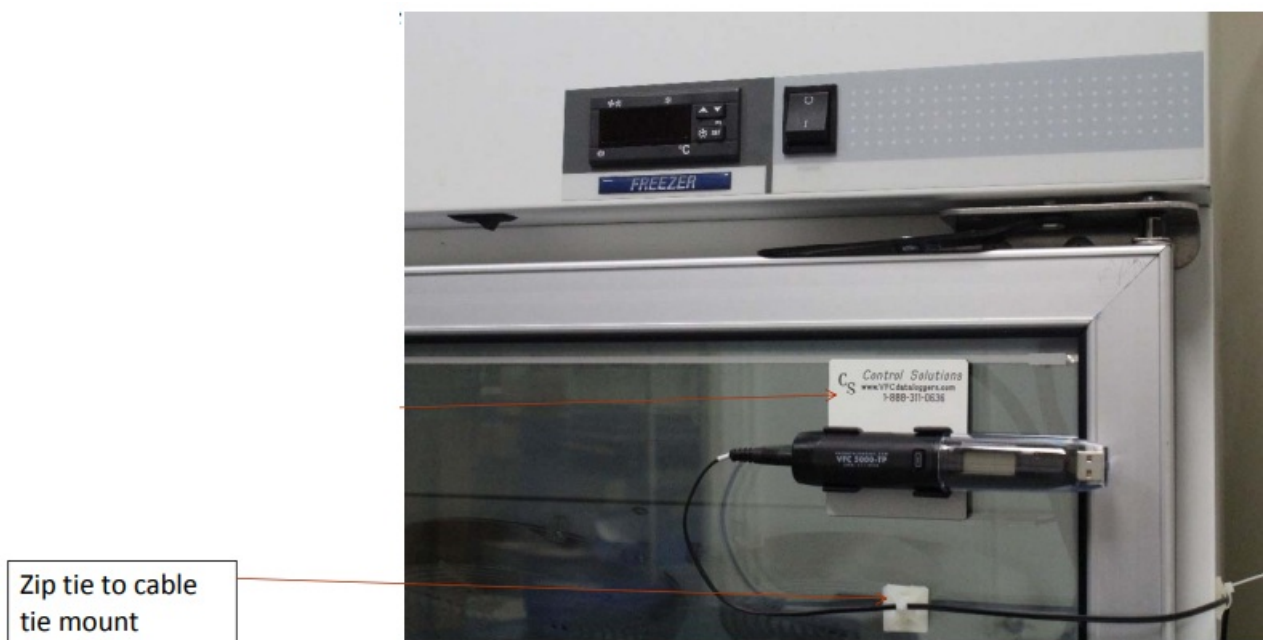


STEP 1 Install the Probe in the fridge/freezer

- Install the acrylic stand and probe vial in the middle of the fridge/freezer
- Route the cable underneath the rack and secure it with a zip tie
- Continue routing the cable toward the hinge side and secure with zip tie
- Run it to the front of the fridge/freezer on the hinge side and secure (see pictures)
- Note: If you have a cable port run it through there and secure with zip ties



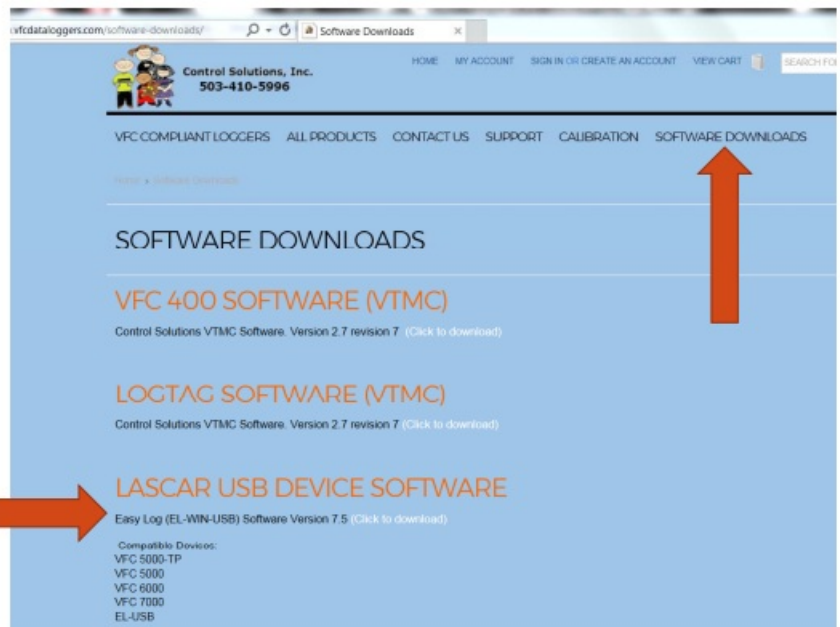
- Secure the cable to the outside of the fridge/freezer with the square adhesive mounting bracket and zip tie
- Make sure to clean the surface of the fridge/freezer before adhering the square adhesive mounting bracket
- Mount cradle on outside of fridge/freezer



STEP 2 Software Download

- You can download the software from Control Solutions website at www.vfcdataloggers.com

- Click on Software Downloads then click on Lascar USB Device Software
- Follow the prompts to download the program on your PC



The software is now installed. It will put an ICON on your desktop.

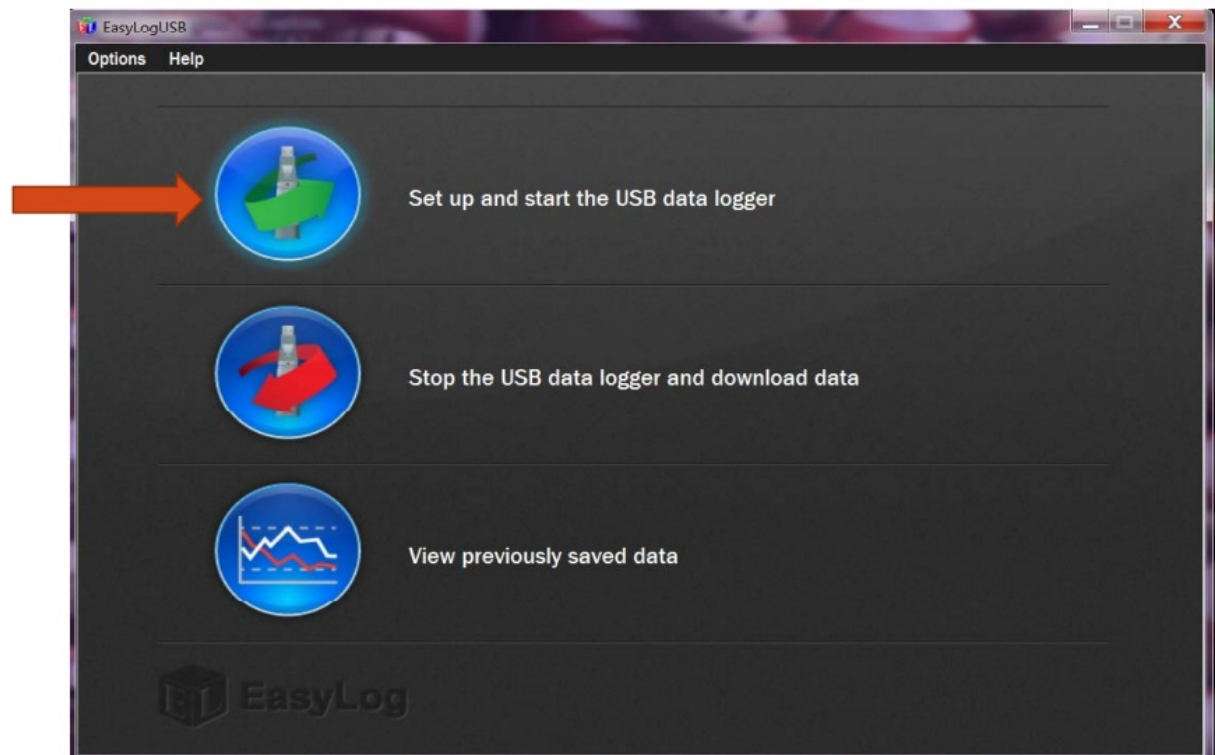


STEP 3 Set-up and Starting the VFC5000-TP

After the software has been installed go to the “EasyLog USB” icon on your desktop and click to open.

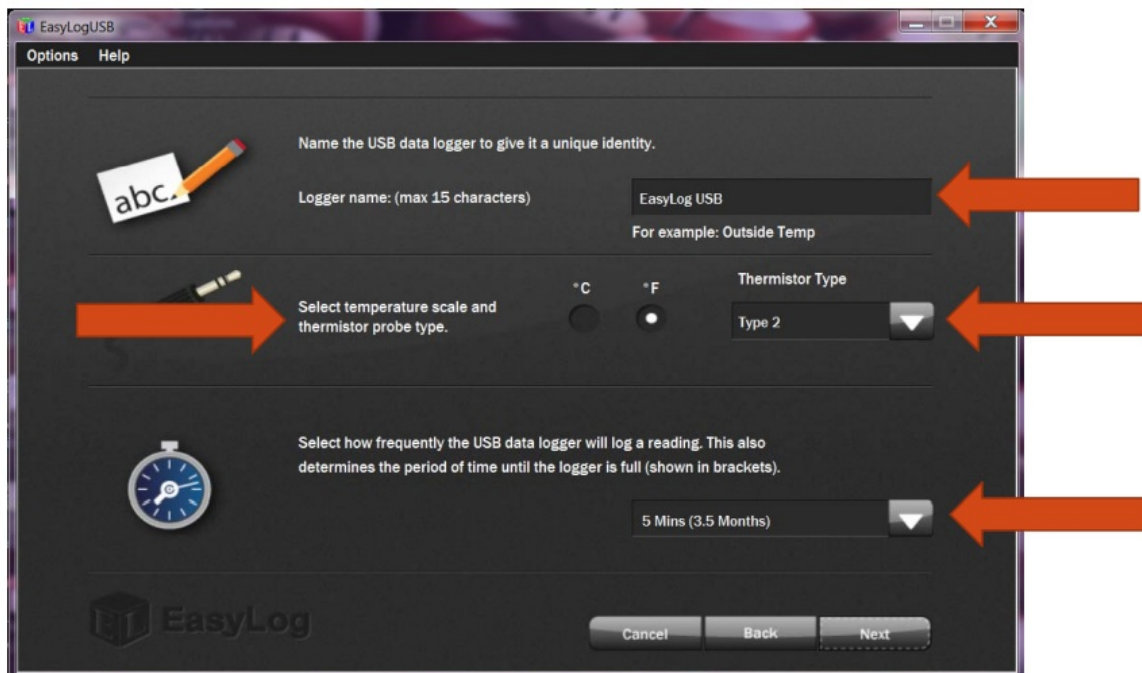


- Plug your VFC5000-TP into the USB port of your computer
- Select the “Set up and start the USB data logger” button

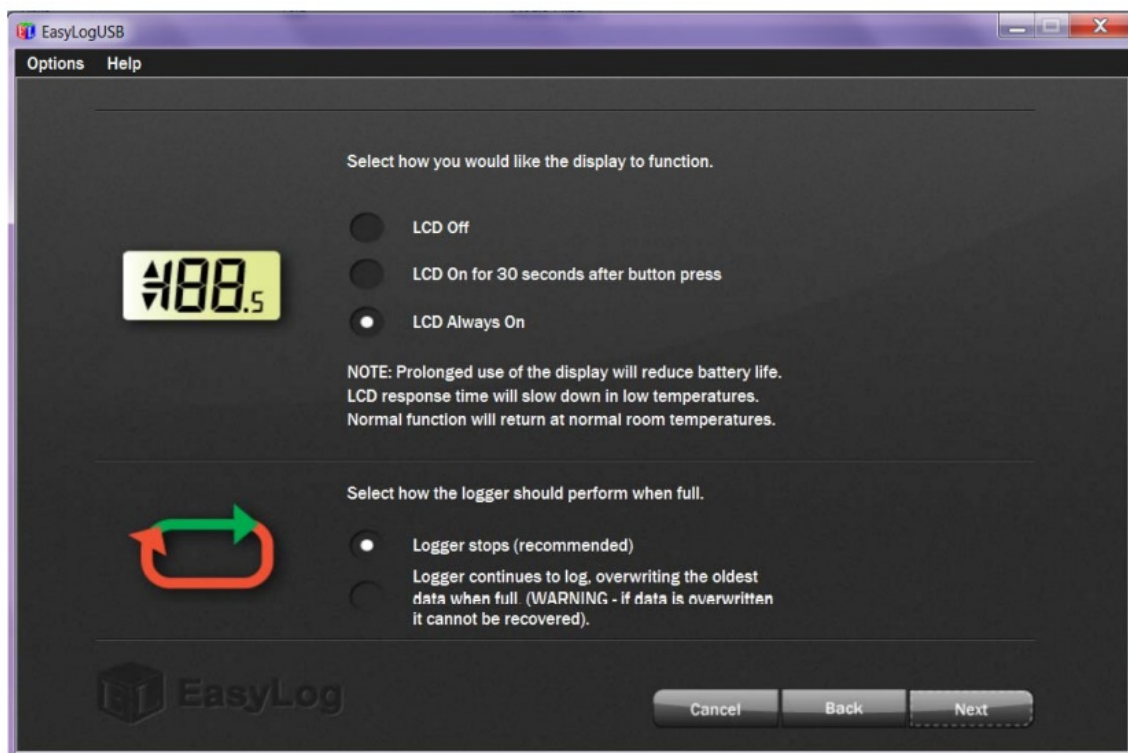


- Give your logger a unique name
- Select Deg F or Deg C
- Select the correct Thermistor type (normally type 2)
- Select how often you want to take a reading (normally 5 minutes)

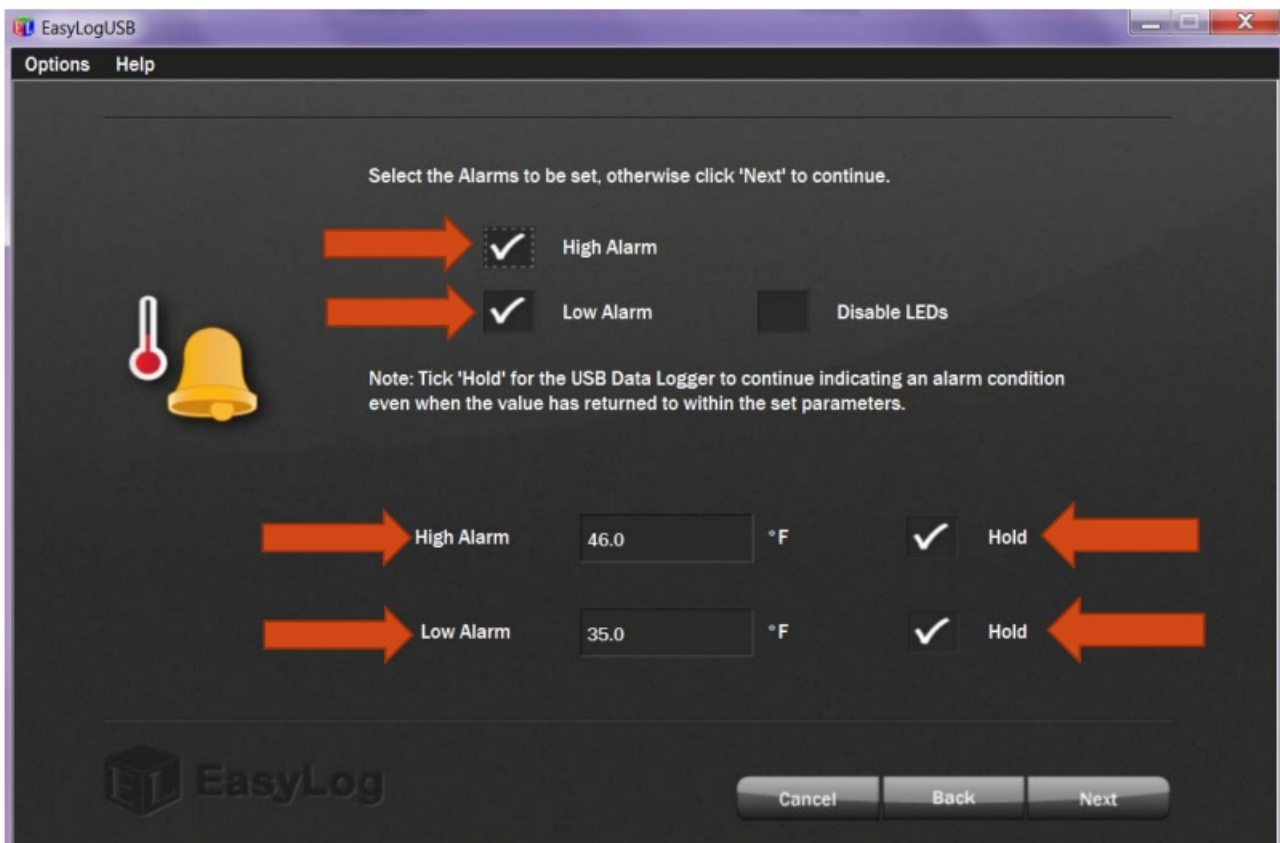
- Click “Next”



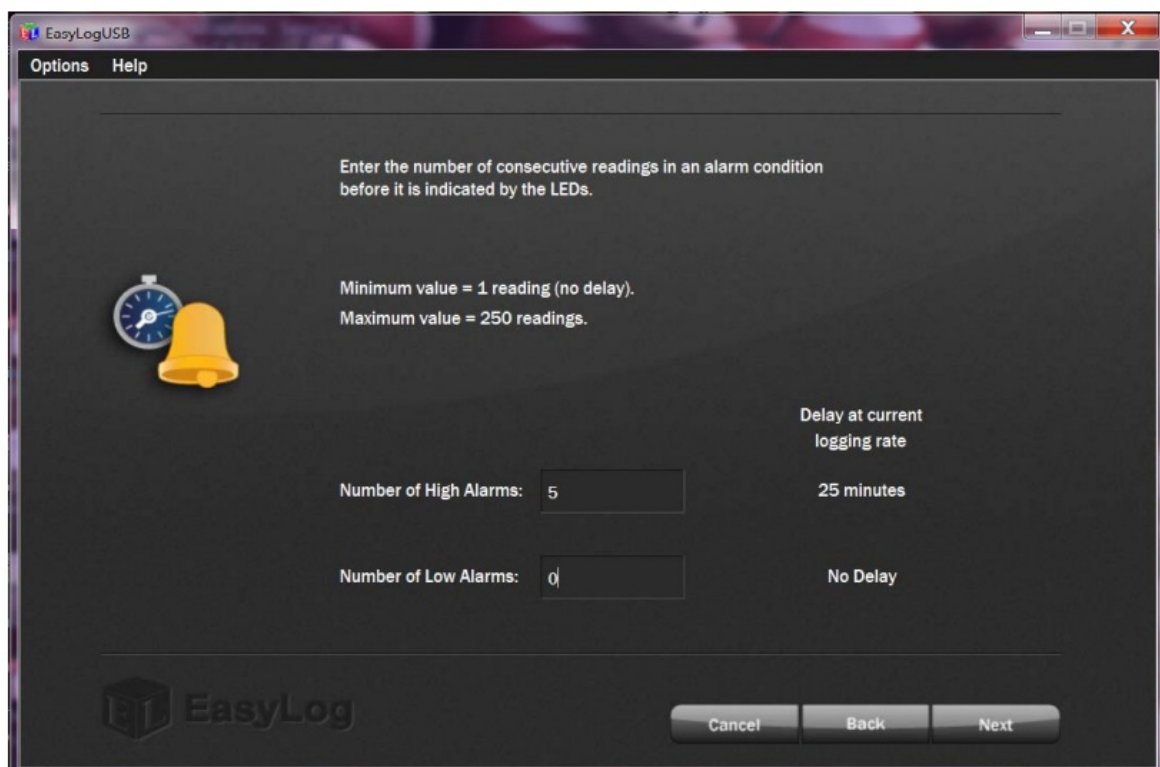
- Select display function (we suggest always on)
- Select how logger performs when full (the CDC suggests Logger Stops)
- Click “Next”



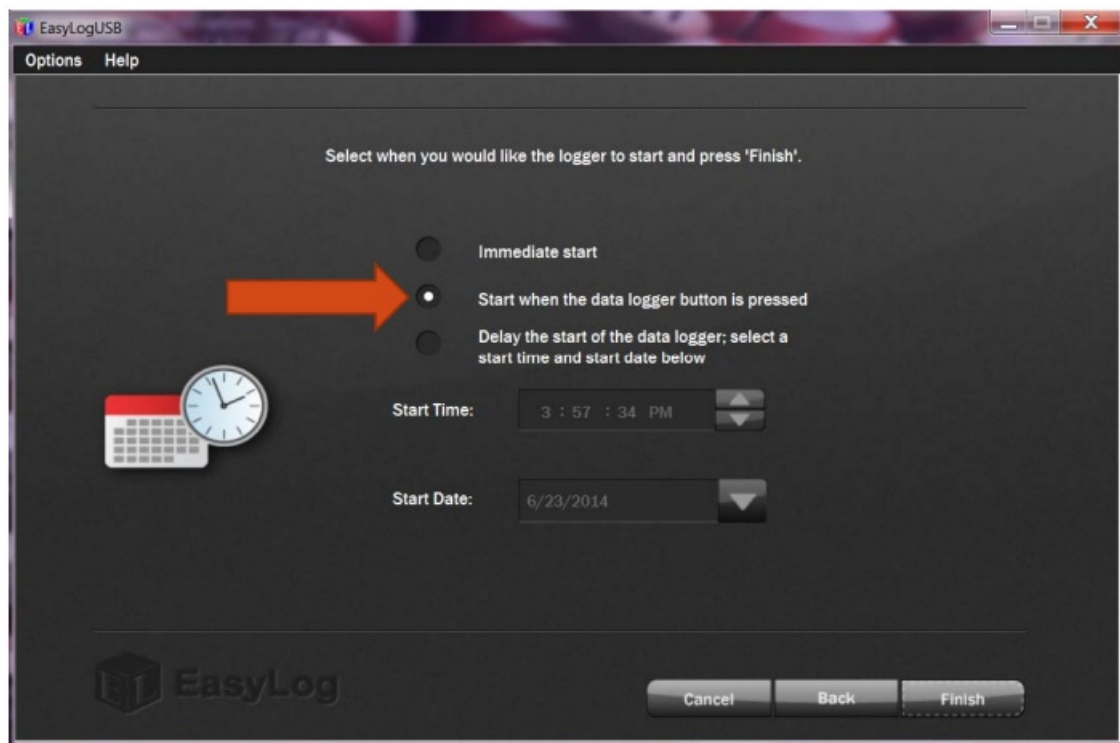
- Check Boxes labeled Low Alarm and High Alarm
- Select the High and Low alarm limits and check the box marked “Hold” for each



- Select the number of alarms you want to cycle before the logger goes into alarm
- We suggest setting the number to 5 for the High Alarm and 0 for the Low Alarm




- Select how you want the logger to start
- We suggest selecting "Start when the data logger button is pressed"
- Click on "Finish" to complete the set-up



- The VFC5000-TP is now ready to data log. The LCD display will flash the letters “PS” which stands for Push Start.
- Plug the cable into the data loggers and push the button to start your data logging session

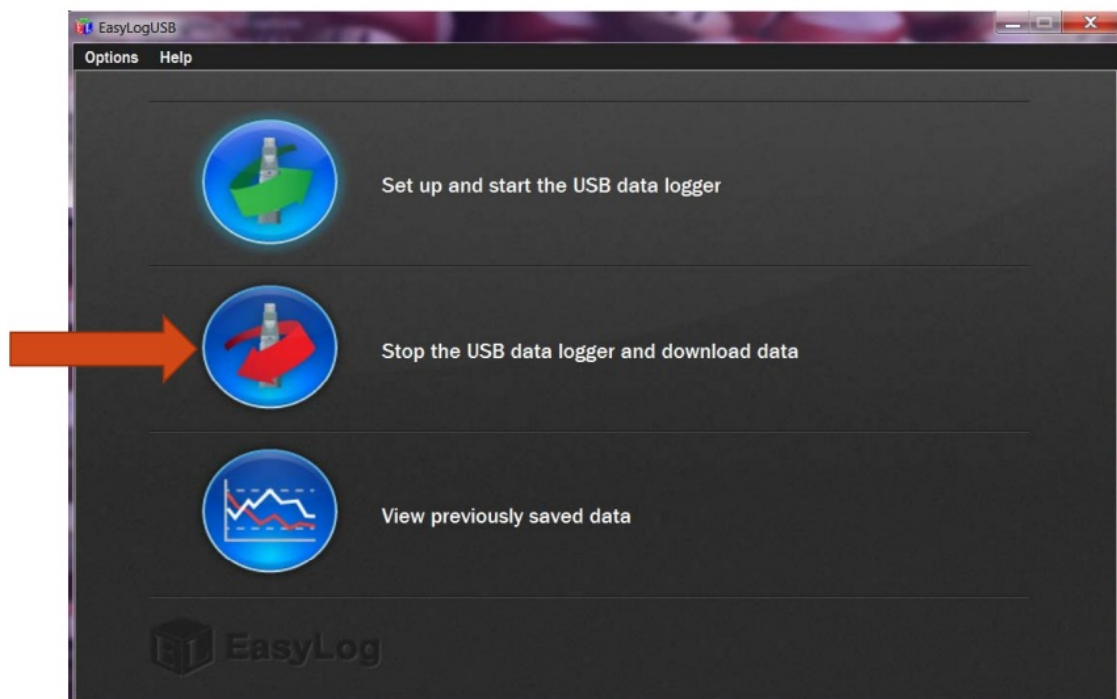


- When the data logger is started there will be a green light that flashes every 10 seconds
- If there is a temperature excursion the red light will blink according to the chart below:

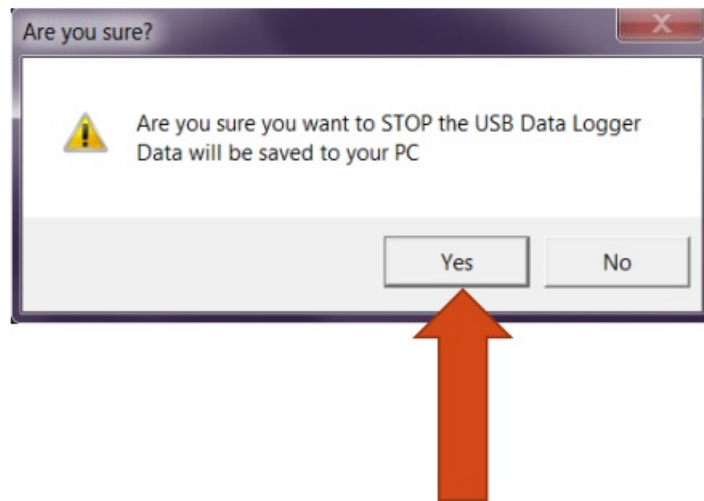
 <p>Green LED Red LED</p>		Green single flash (10 seconds) The data logger is currently logging. No alarm.
		Green single flash (20 seconds) The data logger is currently logging. No alarm. However, the battery is low and should be replaced before logging important data.
		Green single flash (30 seconds) The data logger is not currently logging, but is primed to start at a later date and time (delayed start).
		Green double flash (20 seconds) The data logger is full and has stopped logging. No alarm.
		Red single flash (10 seconds) The data logger is currently logging. Low alarm.
		Red single flash (20 seconds) The data logger is currently logging. Low alarm. However, the battery is low and should be replaced before logging important data.
		Red double flash (10 seconds) The data logger is currently logging. High alarm.
		Red double flash (20 seconds) The data logger is currently logging. High alarm. However, the battery is low and should be replaced before logging important data.
		Red/Green single flash (20 seconds) The data logger is full and has stopped logging. Alarm (high, low or both).
		No LEDs flash The data logger is stopped, the battery is empty or there is no battery fitted.
		Red triple flash (10 seconds) The data logger is currently logging, but the probe has been disconnected.

STEP 4 Stopping the logger and downloading data

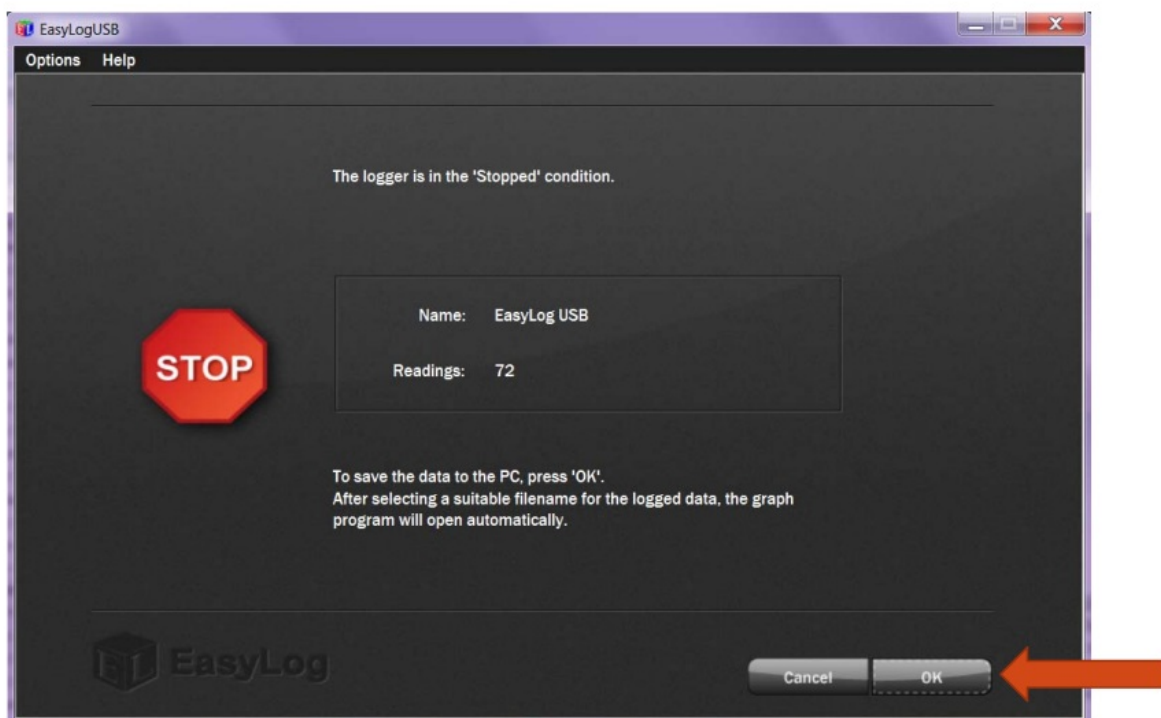
- Click on the red button to stop the data logger and download any stored data.



- To avoid inadvertently interrupting a logging exercise, you will be asked to confirm that you would like to halt the logging process.
- Click Yes to stop the logging exercise.

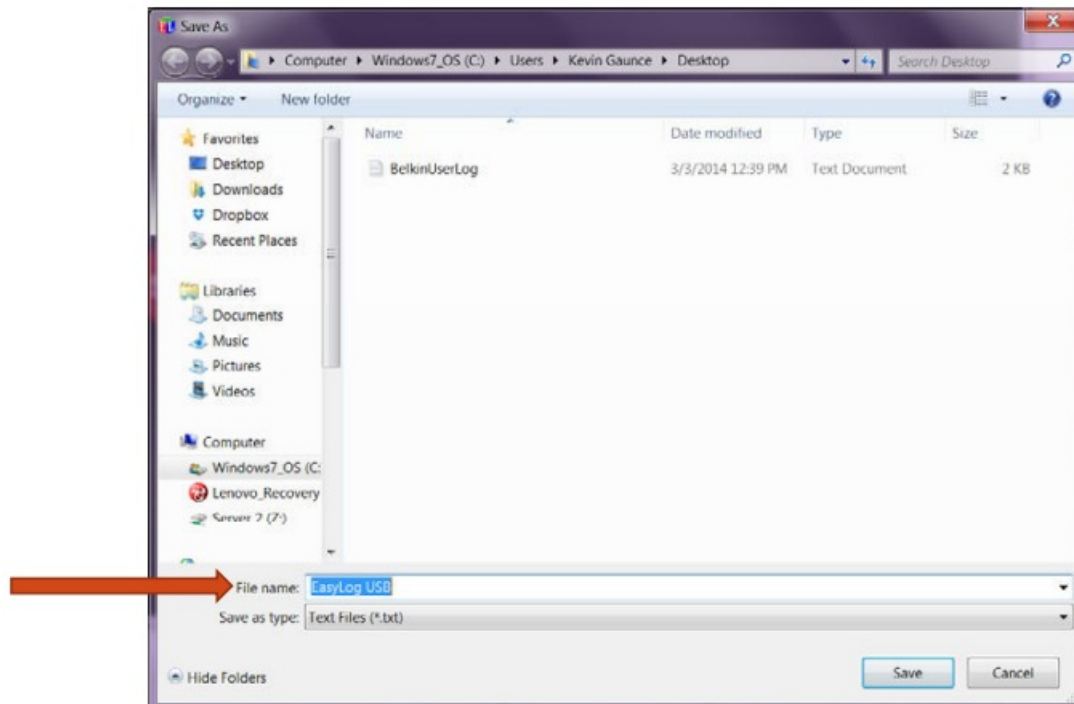


- The screen below will appear
- To save the data to the PC and Graph it click “OK”



- After selecting a suitable file name for the logged data*, the graph program will open automatically and display the readings as a graph (see next slide).
- The data that has just been downloaded will remain in the logger's memory until it has been set up again.

* If you do not choose a file name, then the EL-WIN-USB software will attempt to save the data to a file with the same name as the logger name. You must give the data a unique file name so the data is not over written.



- This is what the graph will look like:



Troubleshooting

- Make sure the battery is not dead
- Check that the driver is loaded in the PC
- PROB 2 error message. The logger may have a short in the probe. Change the sample rate to 1 second and wiggle the cord while it is logging.

- Un-install and re-install software if logger is not recognized in the USB port.

Making sure the battery is working:


Unfold a paper clip into a U. Hold the paper clip so it goes between the + and between the + and – nubs of the battery for 5-10 seconds.

Lithium 3.6 volt ½ AA battery



Control Solutions, Inc.
888 311 0636
Thank you for your business

Documents / Resources

	<p>Control Solutions VFC5000-TP Freezer Vaccine Data Logger Kit [pdf] Instruction Manual VFC5000-TP Freezer Vaccine Data Logger Kit, VFC5000-TP, Freezer Vaccine Data Logger Kit, Vaccine Data Logger Kit, Data Logger Kit, Logger Kit</p>
---	--

References

-  [Home](#) | [Control Solutions](#)

[Manuals+](#), [home](#) [privacy](#)