

Control **iD**  
**iDFace**  
**Max**  
**Support Kit**



## Control iD iDFace Max Support Kit Installation Guide

[Home](#) » [Control iD](#) » Control iD iDFace Max Support Kit Installation Guide 

### Contents

- [1 Control iD iDFace Max Support Kit](#)
- [2 Specifications](#)
- [3 FAQs](#)
- [4 Tools needed](#)
- [5 iDFace Kit](#)
- [6 Installation](#)
- [7 Documents / Resources](#)
  - [7.1 References](#)

Control **iD**

**Control iD iDFace Max Support Kit**



## Specifications

- Product Name: iDFace and iDFace Max Support Kit
- Manufacturer: Control iD
- Components: Various bolts, nuts, washers, mounting pieces, support subsets, flanges, adhesive hole covers, and facial protection pieces

## FAQs

- **Q: Can I use different-sized drill bits for installation?**
  - A: It is recommended to use the specified drill bit sizes for accurate installation.
- **Q: Are cables provided with the kit?**
  - A: No, communication and ETH cables are not supplied with the kit.

## Tools needed

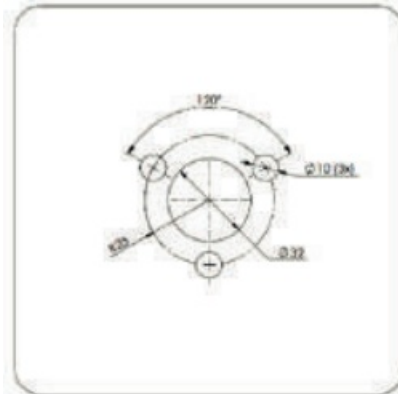
To install the iDFace Kit in the turnstile, the following items will be needed: drill, bits (diameter of 3mm, 6mm and 10mm), hole saw (diameter of 35mm), rasp, 2mm and 2.5mm hex key, Phillips screwdriver, 8mm thin spanner (items not provided by Control iD).

## iDFace Kit

Organize the parts and check if all parts needed are present and according to the quantity listed below:

- DIN7991 M3x10mm bolt (4x)

- DIN934 M5 nut (3x)
- DIN 125 Cut Washer Dia. 5mm (3x)
- DIN 127 Lock Washer Dia. 5mm (3x)
  - Drilling template:



- Support Subset (1x):



- Support Flange (1x)



- Facial Identification Access Controller Mounting Piece Subset (1x):



- Facial Identification Access Controller Mounting Piece Subset (1x):



iDFace Max

- Mounting Piece Support (1x):



iDFace Max

- Adhesive Hole Cover(4x):



- Facial Left Protection (1x):



- Facial Right Protection (1x):



## Installation

- Mount the devices and mark the positions of the holes according to the figure below:

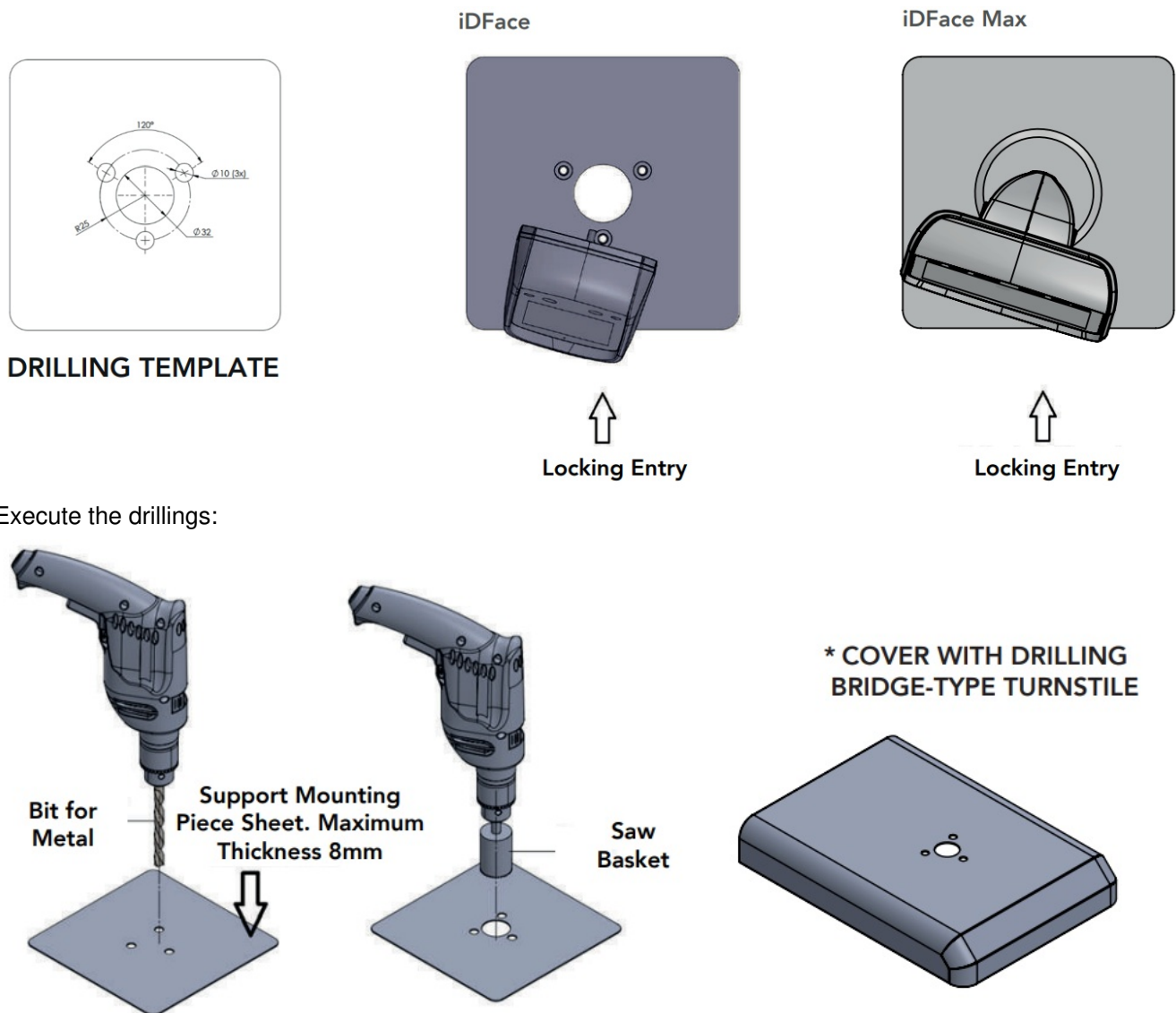


Figure 2

If you have acquired iDBlock Bridge-Type with iDFace Max, it is not necessary to drill the cover, since the product is already drilled.

- Assemble the Support Subset:

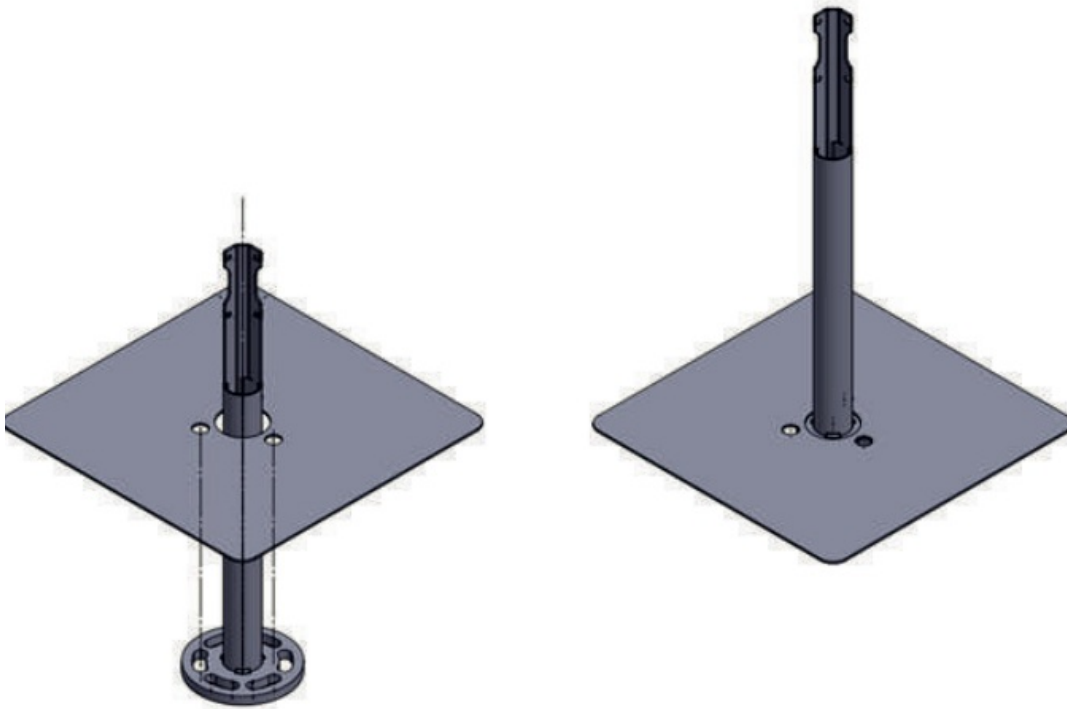
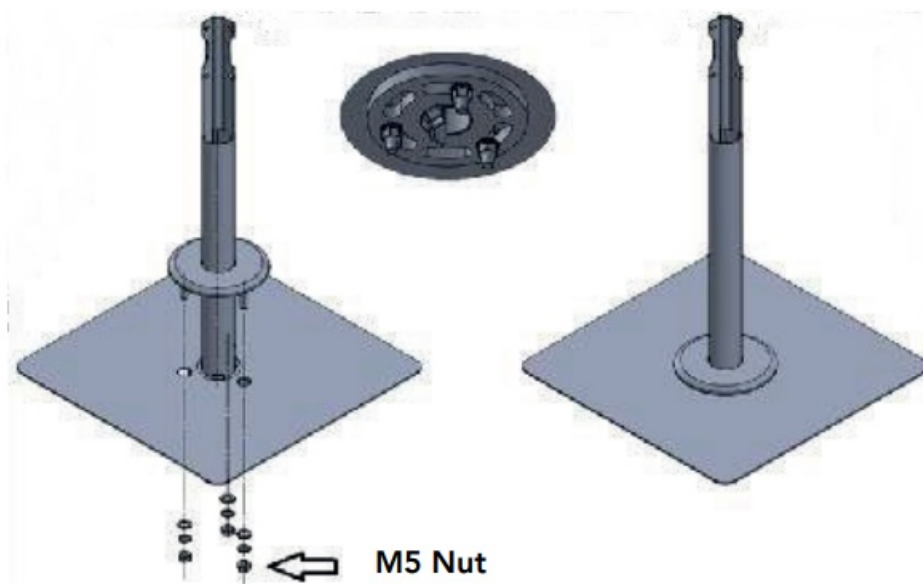
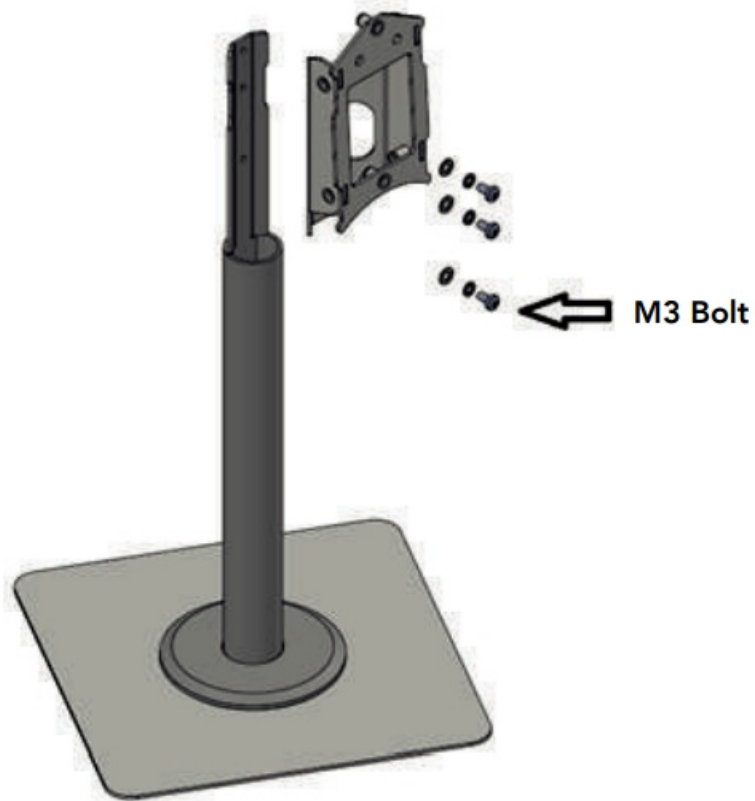


Figure 3

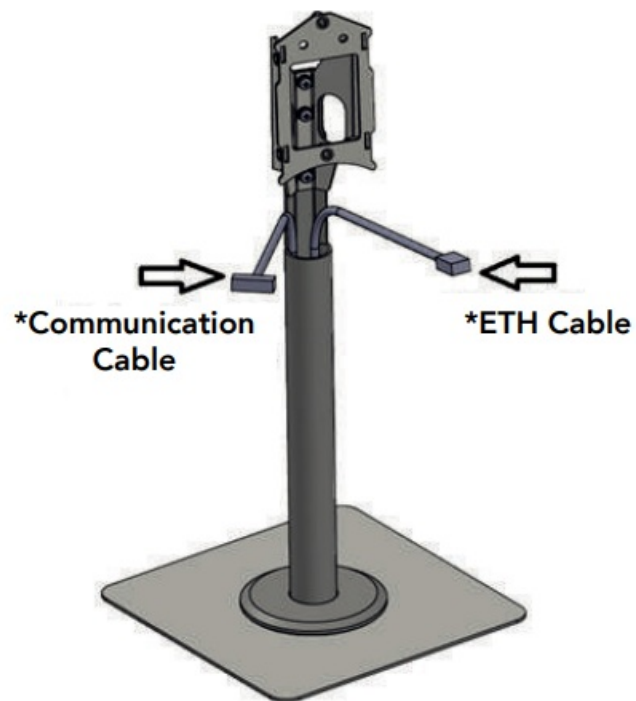
- Mount the Support Flange:



- Bolt the Mounting Piece Support:

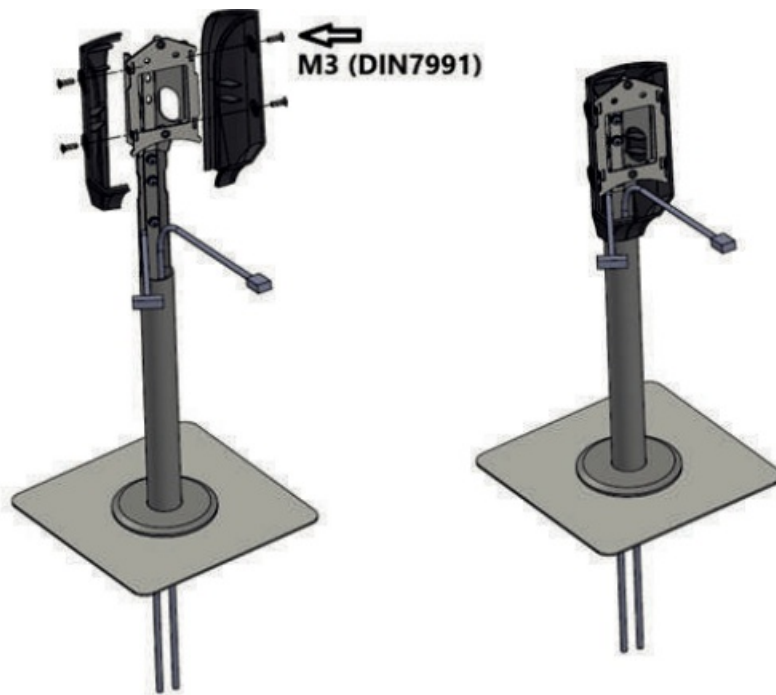


- Cable Passage:



Cables not supplied by Control iD.

- Mount Protections and Facial Identification Access Controller Fixing:



- Mount Support of the Facial Identification Access Controller Fixing:

iDFace

iDFace Max

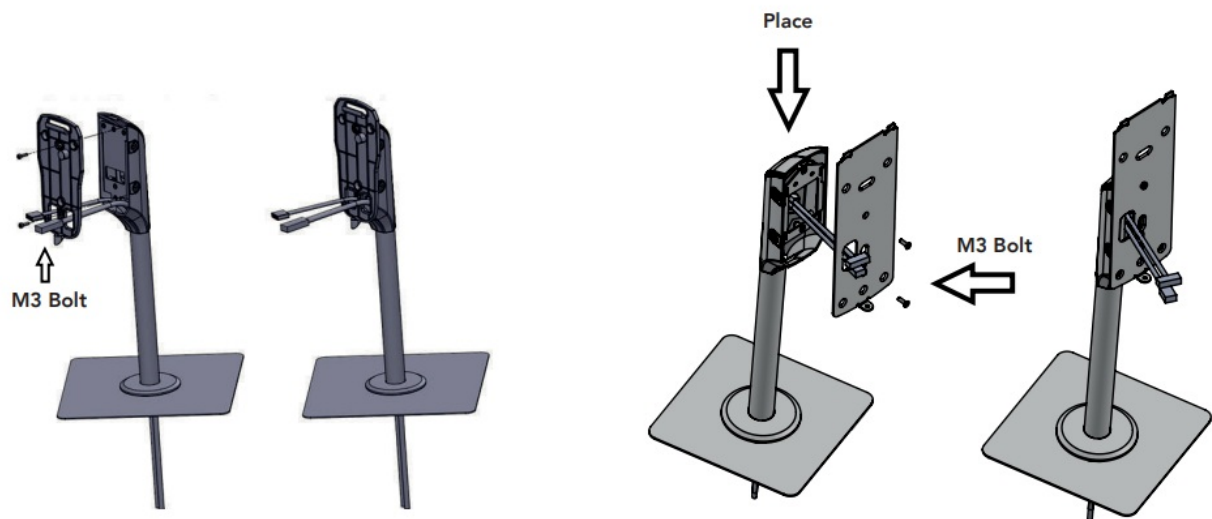


Figure 8

- Mount the Facial Identification Access Controller Fixing:



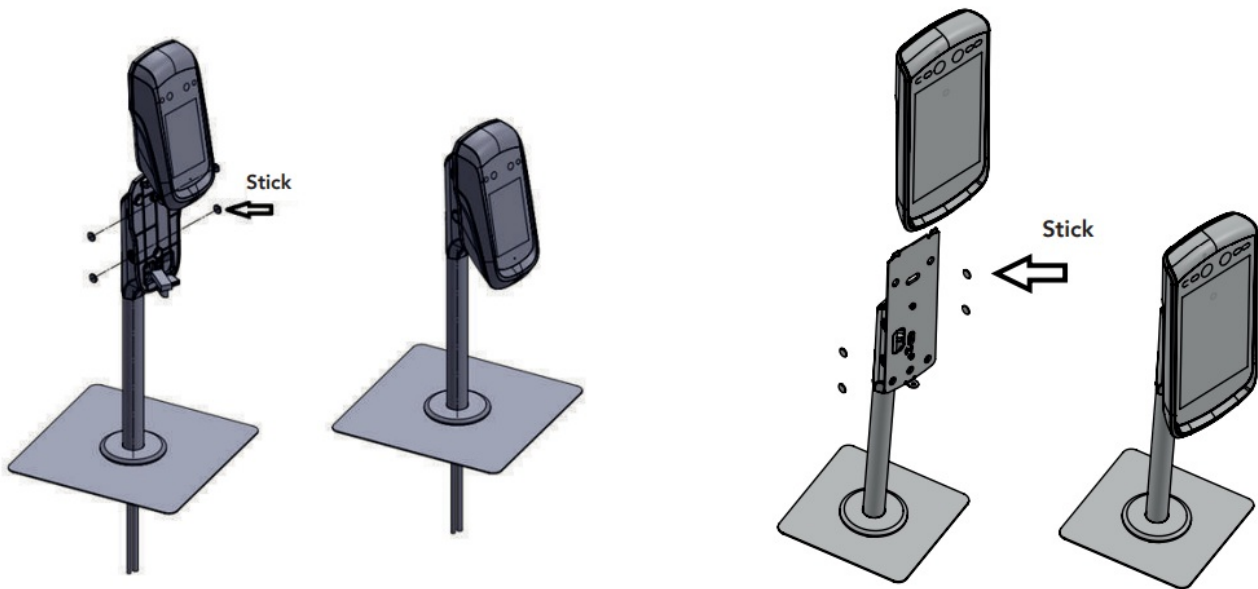



Figure 9

## MORE INFO

- Thank you for acquiring the support kit for the facial identification access controller.
- For detailed information on the use of your new support kit, access:  
<https://www.controlid.com.br/userguide/iface-support-kit-en.pdf>
- By using Control iD's products, you are accepting the Terms and Conditions of Use and the Information on Personal Data Protection available on: [www.controlid.com.br/legal/acessoeponto.pdf](http://www.controlid.com.br/legal/acessoeponto.pdf)

## Documents / Resources

 <p>Control iD Installation Guide iDFace and iDFace Max Support Kit</p> <p><small>Thank you for acquiring the support kit for facial identification access controller. For detailed information on the use of your new support kit, access: <a href="https://www.controlid.com.br/userguide/iface-support-kit-en.pdf">https://www.controlid.com.br/userguide/iface-support-kit-en.pdf</a> By using Control iD's products, you are accepting the Terms and Conditions of Use and the Information on Personal Data Protection available on: <a href="http://www.controlid.com.br/legal/acessoeponto.pdf">www.controlid.com.br/legal/acessoeponto.pdf</a></small></p>	<p><a href="#">Control iD iDFace Max Support Kit</a> [pdf] Installation Guide iDFace, iDFace Max, iDFace Max Support Kit, iDFace, Max Support Kit, Support Kit</p>
---	--

## References

- [User Manual](#)

[Manuals+.](#) [Privacy Policy](#)

This website is an independent publication and is neither affiliated with nor endorsed by any of the trademark owners. The "Bluetooth®" word mark and logos are registered trademarks owned by Bluetooth SIG, Inc. The "Wi-Fi®" word mark and logos are registered trademarks owned by the Wi-Fi Alliance. Any use of these marks on this website does not imply any affiliation with or endorsement.