



CONTOUR DESIGN CDRMREDPN20213 Roller Mouse Red Plus Wireless User Guide

[Home](#) » [contour design](#) » CONTOUR DESIGN CDRMREDPN20213 Roller Mouse Red Plus Wireless User Guide



CONTOUR DESIGN

 **RollerMouse Red
Plus Wireless**



www.contourdesign.com

Contents

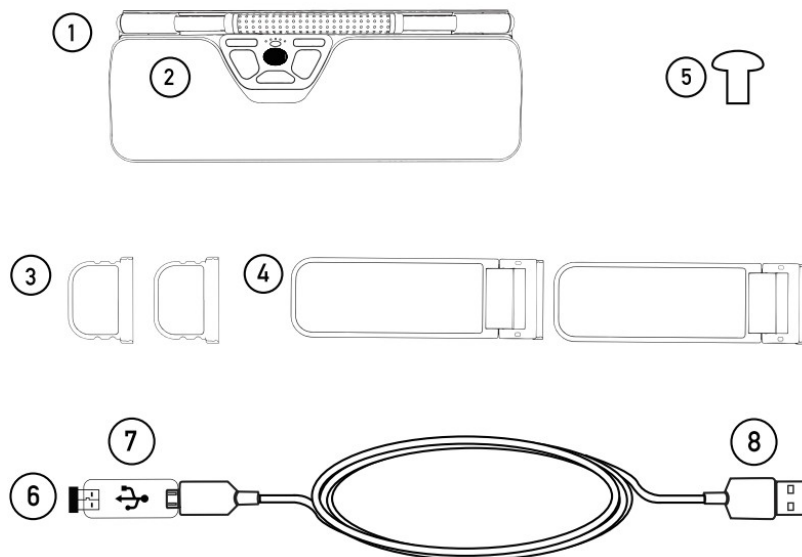
- [1 CDRMREDPN20213 Roller Mouse Red Plus Wireless](#)
- [2 Functions](#)
- [3 Charging / Extension](#)
- [4 Keyboard Risers](#)
- [5 Documents / Resources](#)
 - [5.1 References](#)

CDRMREDPN20213 Roller Mouse Red Plus Wireless

What's in the Box?

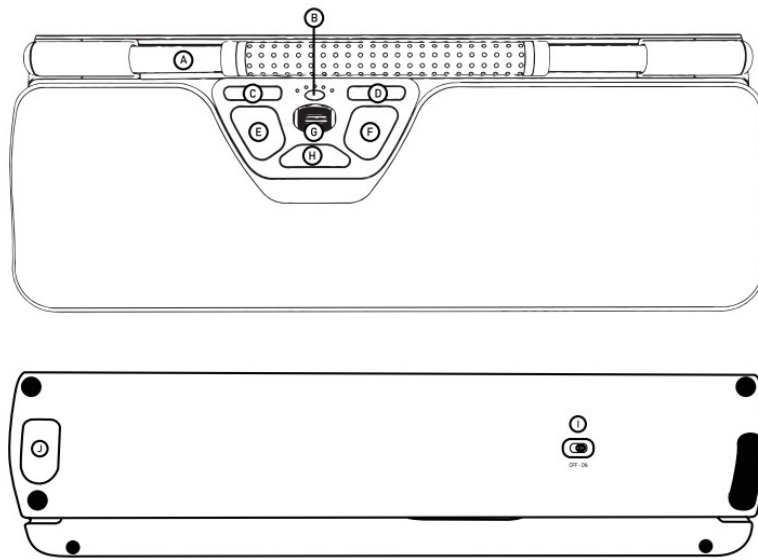
1. RollerMouse Red Plus Wireless
2. Wrist rest
3. Two short keyboard risers
4. Two long keyboard risers
5. Wrist rest removal key
6. Dongle
7. USB extender
8. USB charging cable

*Please find accessories # 6,7,8 attached together in the box.



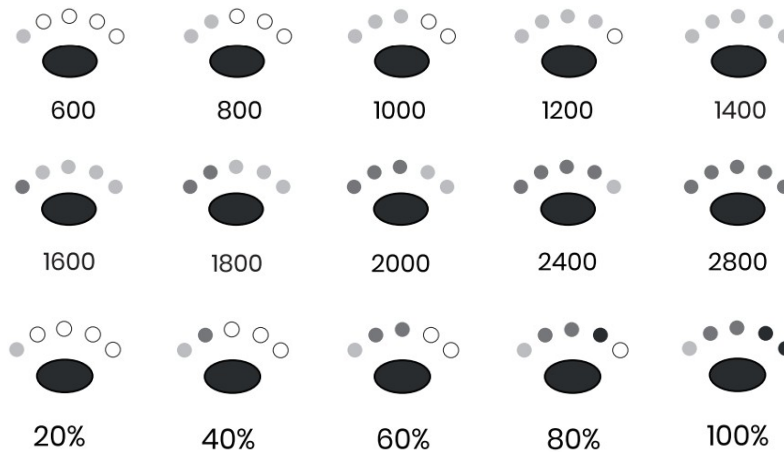
Functions

- A. Rollerbar
- B. Cursor speed and battery level indicator LED
- C. Copy
- D. Paste
- E Left-click
- F. Right-click
- G. Scroll wheel X
- H. "One Touch" double-click
- I. On-off Switch
- J. Dongle storage compartment



Cursor Speed (DPI)

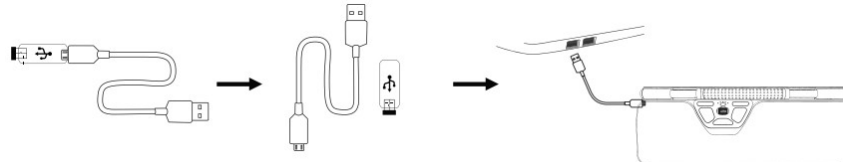
Press the Cursor speed (button B) to cycle through cursor **speeds**.



Battery

Charging / Extension

To charge your RollerMouse remove the USB extender and dongle from the charging cable. Plug the Micro USB end into the RollerMouse. Your RollerMouse will charge in 6 hours. You may continue to use your RollerMouse as it charges. We recommend charging your RollerMouse once a month based on average daily office use.



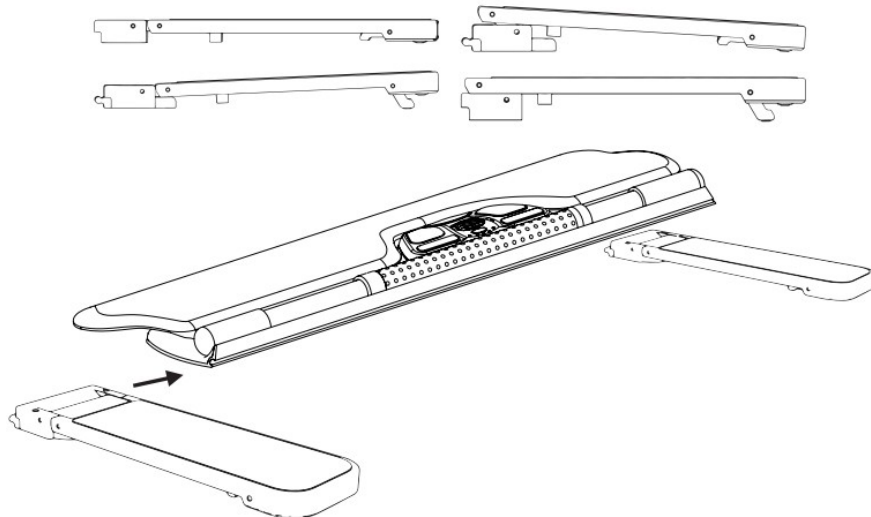
Rollerbar Click Function

Click force refers to the level of resistance when clicking the Rollerbar. To change the click force, press and hold button B (the cursor speed button). While continuing to hold B, press button E (the left-click button) one time. The LED lights will show the current click force setting. Click button E in succession to toggle the click force setting. Release both buttons once the desired force has been selected.

Note: The Rollerbar click function can be turned off using the above adjustment method. Toggle the setting until all LEDs are lit.

Keyboard Risers

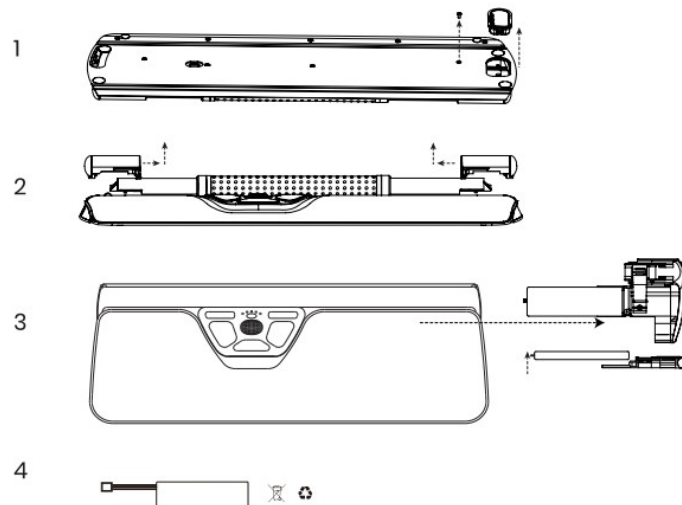
Before using your RollerMouse, take a moment and adjust the keyboard risers to achieve the desired keyboard height and angle. For a proper ergonomic position, the front edge of the keyboard should be as close to the Rollerbar as possible.



Software driver

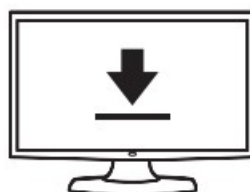
All Contour's ergonomic products are plug-and-play. If you want to customize your RollerMouse, we recommend to download the free driver available at: <https://contourdesign.com/drivers>

Battery disposal



2year guarantee

All Contour Design products come with a 2 year guarantee.



Product Support

For information on software drivers, product manuals, and advanced product Settings such as thin client mode, please visit: Contourdesign.com/support



Sales Support

If you have questions about your recent purchase, email us:

United States: ergoinfo@contourdesign.com

All other countries: support@contourdesign.com

CONTOUR DESIGN



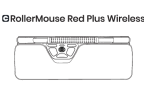
FSC www.fsc.org

MIX

Paper from
responsible sources

FSC® C137900

Documents / Resources

 <p>©Roller Mouse Red Plus Wireless www.contourdesign.com</p>	CONTOUR DESIGN CDRMREDPN20213 Roller Mouse Red Plus Wireless [pdf] User Guide CDRMREDPN20213 Roller Mouse Red Plus Wireless, CDRMREDPN20213, Roller Mouse Red Plus Wireless, Mouse Red Plus Wireless, Red Plus Wireless, Plus Wireless
--	--

References

- [User Manual](#)

[Manuals](#), [Privacy Policy](#)

This website is an independent publication and is neither affiliated with nor endorsed by any of the trademark owners. The "Bluetooth®" word mark and logos are registered trademarks owned by Bluetooth SIG, Inc. The "Wi-Fi®" word mark and logos are registered trademarks owned by the Wi-Fi Alliance. Any use of these marks on this website does not imply any affiliation with or endorsement.