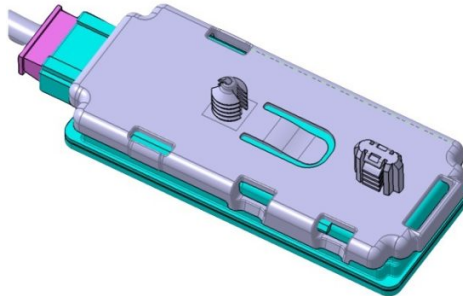


Continental FBD5 UWB BLE CAN Gateway Instruction Manual

[Home](#) » [Continental](#) » Continental FBD5 UWB BLE CAN Gateway Instruction Manual 

Continental FBD5 UWB BLE CAN Gateway Instruction Manual

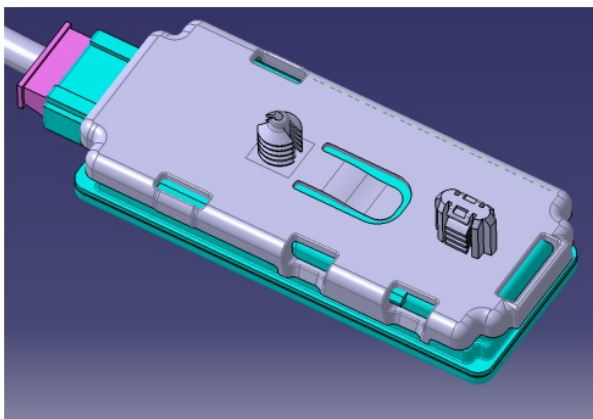


Contents

- [1 How to assembly / mount the module in vehicle](#)
- [2 Statement](#)
- [3 Documents / Resources](#)
- [4 Related Posts](#)

How to assembly / mount the module in vehicle

Module FBD5 will be fixed with clips in the vehicle chassis.

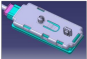



Statement

- **a) User Information gem. FCC 15.21:**
Changes or modifications not expressly approved by the party responsible for compliance could void the user’s authority to operate the equipment.
- **b) Part 15 Statement gem. FCC 15.19 falls.**
This device complies with Part 15 of the FCC Rules. Operation is subject to the following two conditions:
 1. This device may not cause interference.
 2. This device must accept any interference, including interference that may cause undesired operation of the device.
- **c) Statement gem.RSS GEN Issue 5::**
This device contains licence-exempt transmitter(s)/receiver(s) that comply with Innovation, Science and Economic Development Canada’s licence-exempt RSS(s). Operation is subject to the following two conditions:
 1. This device may not cause interference
 2. This device must accept any interference, including interference that may cause undesired operation of the device..



Documents / Resources

	Continental FBD5 UWB BLE CAN Gateway [pdf] Instruction Manual FBD5, KR5FBD5, FBD5 UWB BLE CAN Gateway, UWB BLE CAN Gateway
	Continental FBD5 UWB BLE CAN Gateway [pdf] Owner's Manual FBD5MY23, KR5FBD5MY23, FBD5 UWB BLE CAN Gateway, UWB BLE CAN Gateway