




Continal 39011-DTSRF Quantum Dial Thermostat-RF User Guide

[Home](#) » [Continal](#) » Continal 39011-DTSRF Quantum Dial Thermostat-RF User Guide 

Contents

- [1 Continal 39011-DTSRF Quantum Dial Thermostat-RF](#)
- [2 Overlay information](#)
- [3 LED indication](#)
- [4 Installation](#)
- [5 Linking](#)
- [6 Identify \(offline\)](#)
- [7 Identify \(offline\)](#)
- [8 Factory reset](#)
- [9 Product compliance and safety information](#)
- [10 Want more information?](#)
- [11 Documents / Resources](#)
 - [11.1 References](#)
- [12 Related Posts](#)



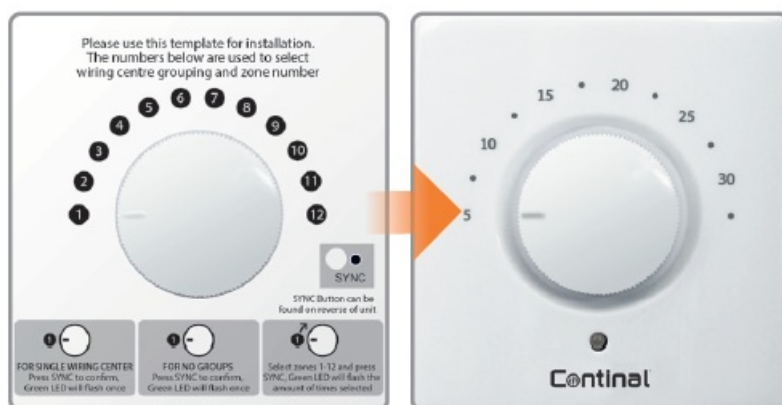
Continal 39011-DTSRF Quantum Dial Thermostat-RF



Our unique Quantum dial thermostat-RF is the only dial thermostat that can be operated remotely via an easy-to-use app or through its simple interface. Users appreciate its silent switching and clear LED indicator, while its self-learning feature requires minimal intervention.

Overlay information

For reference only. The image on the left explains the correlation between the temperature scale and the pairing scale. To be used for the initial set-up or in case of lost link error. Please keep the sticker on until installation is complete.







LED indication

| LED | Meaning |
|---|-----------------------------------|
| Before pairing | |
|  | Wanting to join network |
|  | Joined the network successfully |
|  | *Pairing complete |
| | Wiring centre number selection OK |
|  | Wiring centre group selection OK |
| | Wiring centre zone selection OK |
| | Identify process ON |

* Only in offline mode

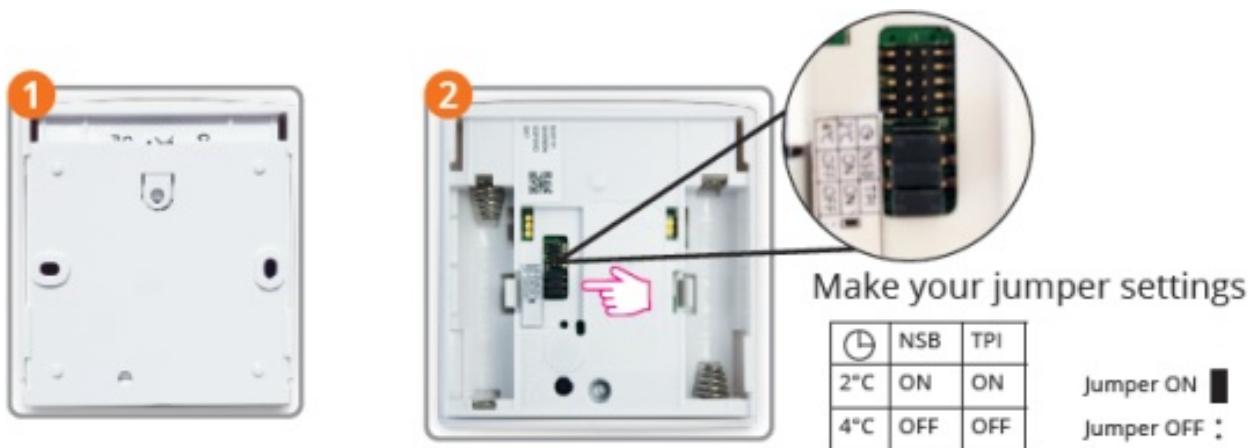
Note: When thermostat is calling for heat, the LED will be OFF. If you encounter the lost link error, repeat the pairing procedure.

| LED | Meaning |
|---|--|
| Error codes | |
| | Lost connection with Quantum coordinator / Quantum wiring centre-RF / Quantum hub |
|  | Quantum dial thermostat-RF has been reset |
| | Low battery |
| | Air sensor is too short or open |
| | Pairing failed |
|   | Error when trying to add two Quantum dial thermostat-RF to the same wiring centre zone |
|  | - Device reset; - After pairing in online mode: data being sent to the cloud |

* Only in offline mode

Note: When the thermostat is calling for heat, the LED will be OFF. If you encounter the lost link error, repeat the pairing procedure.

Installation



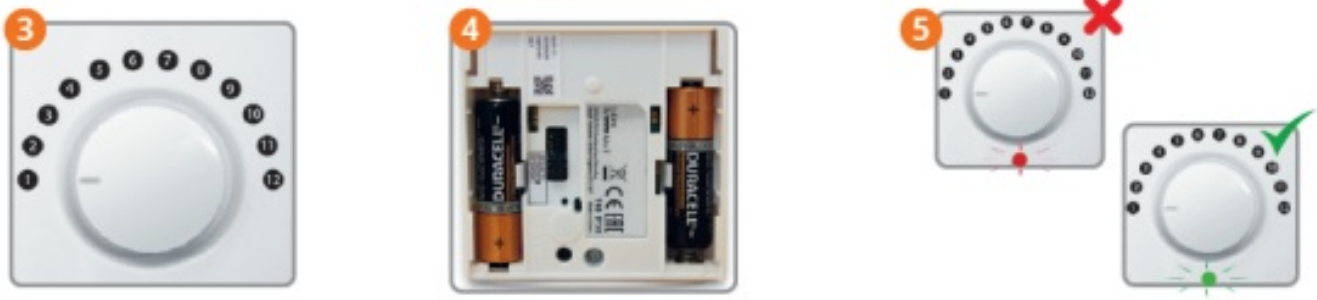
Jumper Feature Default

- PI*/SPAN TPI (jumper ON) or Span
- 0.5°C (remove jumper)
- TPI ON
- NSB** Night Setback ON (jumper ON) or OFF (remove jumper)
- Setback
- value

- -2°C (jumper ON) or -4°C
- (remove jumper)
- -2°C for heating

TPI will determine the pattern of your heating periods and will adjust it so that the temperature point will be maintained longer.

NSB will only operate if there is a master thermostat set on the wiring center. If there is no master set, there's no need to remove the jumper.



1. Make sure that the thermostat dial is set in position.
2. Insert the batteries.
3. If the Quantum dial thermostat-RF flashes green, but you need to re-pair it, read the Reset section.

Linking

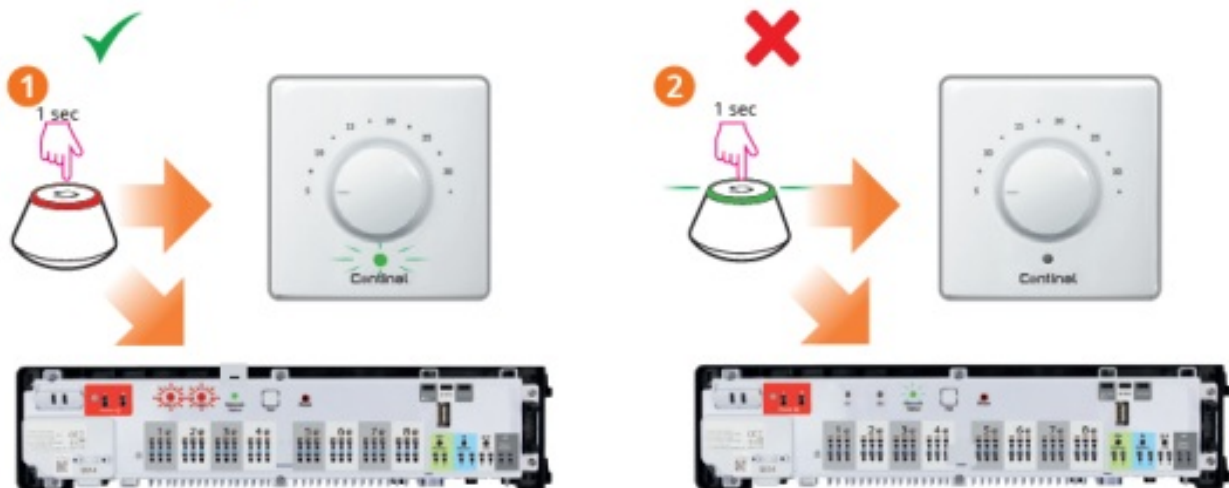
Refer to the linking quick guides for instructions on how to link the Quantum wiring centre-RF.

This can be found at www.continal.eu/quantum

Identify (offline)



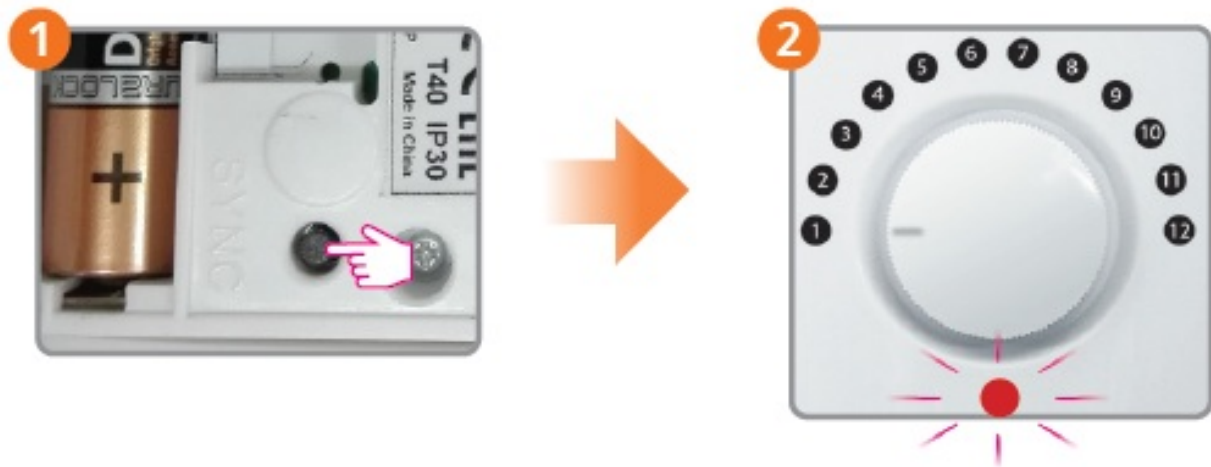
Identify (offline)



Factory reset

If a factory reset is required, each Quantum thermostat will need to be factory reset separately to the Quantum wiring centre.

Quantum dial thermostat-RF



XPress the reset button for 5 seconds, then the thermostat will completely reset and remove itself from the ZigBee network.

Product compliance and safety information

Product compliance

This product complies with the essential requirements and other relevant provisions of Directives 2014/53/EU and 2011/65/EU.

2405MHz-2480MHz; <14dBm (ZigBee)

Safety information

Use in accordance with the regulations. Indoor use only. Keep your device completely dry. Disconnect your device before cleaning it with a dry cloth.



Note: Always isolate the AC mains supply before installing or working on any components that require 230 VAC supply.

Want more information?

0333 800 1750

www.continal.co.uk

Documents / Resources

| | |
|---|---|
|  <p>Quantum dial thermostat-RF</p> <p>Der eingetragte Quantum Dial Thermostat-RF ist ein drahtlos gesteuertes Heizungsventil, das über einen ZigBee-Funkkanal mit dem Continal 39011-DTSRF-Steuergerät verbunden ist. Es ist für die Steuerung von Heizungsventilen in einem Raum geeignet.</p> <p>Contents</p> <ul style="list-style-type: none"> 1. Einleitung 2. Installation 3. Bedienung 4. Wartung 5. Technische Daten | <p>Continal 39011-DTSRF Quantum Dial Thermostat-RF [pdf] User Guide 39011-DTSRF, Quantum Dial Thermostat-RF</p> |
|  <p>Quantum dial thermostat-RF</p> <p>Der eingetragte Quantum Dial Thermostat-RF ist ein drahtlos gesteuertes Heizungsventil, das über einen ZigBee-Funkkanal mit dem Continal 39011-DTSRF-Steuergerät verbunden ist. Es ist für die Steuerung von Heizungsventilen in einem Raum geeignet.</p> <p>Contents</p> <ul style="list-style-type: none"> 1. Einleitung 2. Installation 3. Bedienung 4. Wartung 5. Technische Daten | <p>Continal 39011-DTSRF Quantum Dial Thermostat-RF [pdf] Instruction Manual 39011-DTSRF Quantum Dial Thermostat-RF, 39011-DTSRF, Quantum Dial Thermostat-RF</p> |

References

- [Continal Underfloor Heating | Home](#)

- [!\[\]\(fd4127b9e2af37bd6ea0fa06afa8e6d8_img.jpg\) Underfloor heating systems | Continal Underfloor Heating](#)
- [!\[\]\(3278d6283d12f18012b5aa7d40747611_img.jpg\) Quantum controls | Continal Underfloor Heating](#)

Manuals+