




Consumer Express 35062141 Bluetooth Numeric Keypad User Manual

[Home](#) » [Consumer Express](#) » Consumer Express 35062141 Bluetooth Numeric Keypad User Manual 

Contents

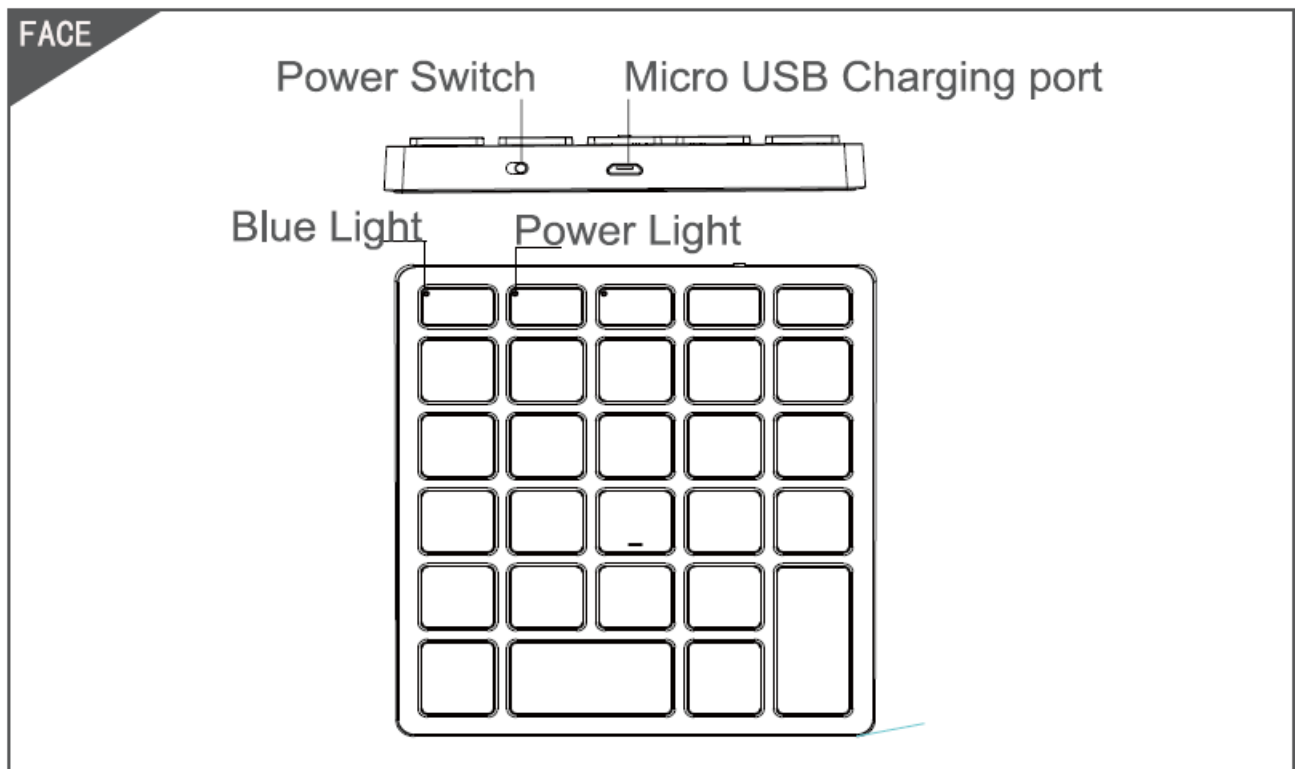
- [1 Consumer Express 35062141 Bluetooth Numeric Keypad](#)
- [2 FACE](#)
- [3 BACK](#)
- [4 Bluetooth pairing connection](#)
- [5 Technical Specifications](#)
- [6 Status Display LED](#)
- [7 Troubleshooting](#)
- [8 Copyright](#)
- [9 Safety instructions](#)
- [10 Warranty](#)
- [11 Keyboard Maintenance](#)
- [12 FAQ](#)
- [13 Sleep Mode](#)
- [14 Documents / Resources](#)
- [15 Related Posts](#)

Consumer Express

Consumer Express 35062141 Bluetooth Numeric Keypad

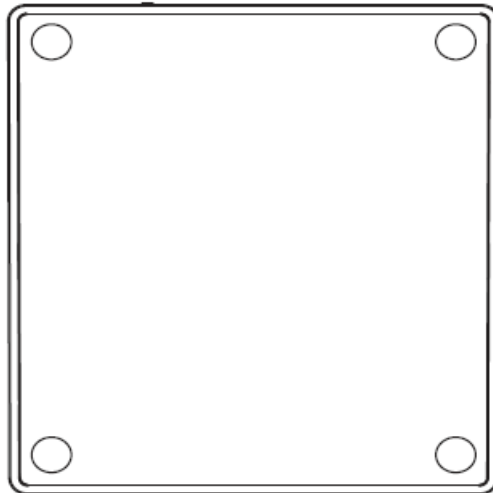


FACE



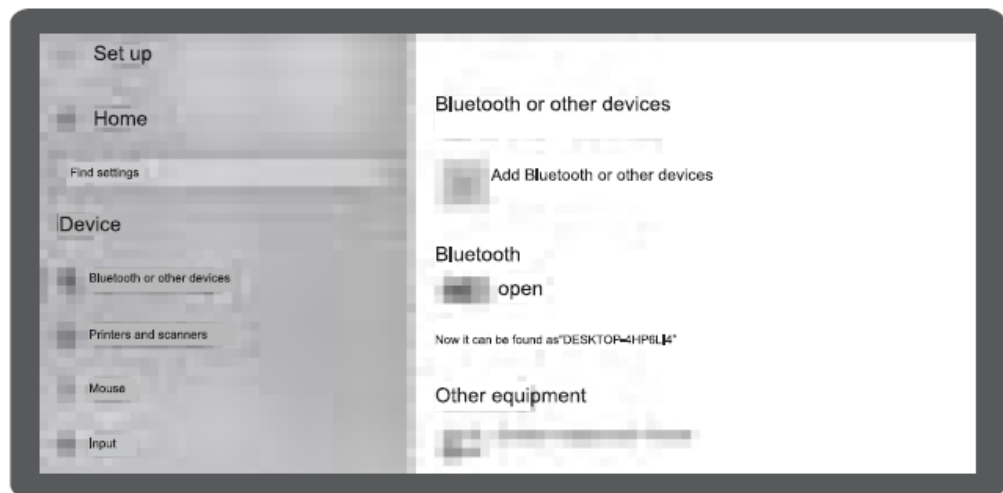
BACK

BACK

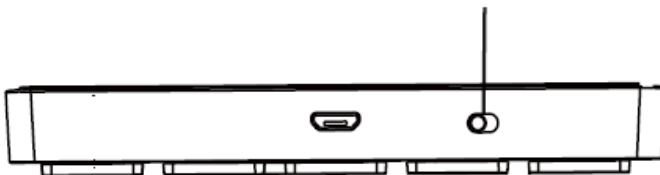


Bluetooth pairing connection

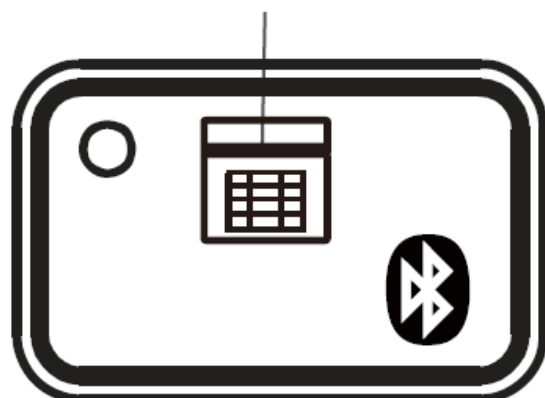
1. Open settings, turn on Bluetooth and click Add Bluetooth or other devices.



Power Switch



Bluetooth

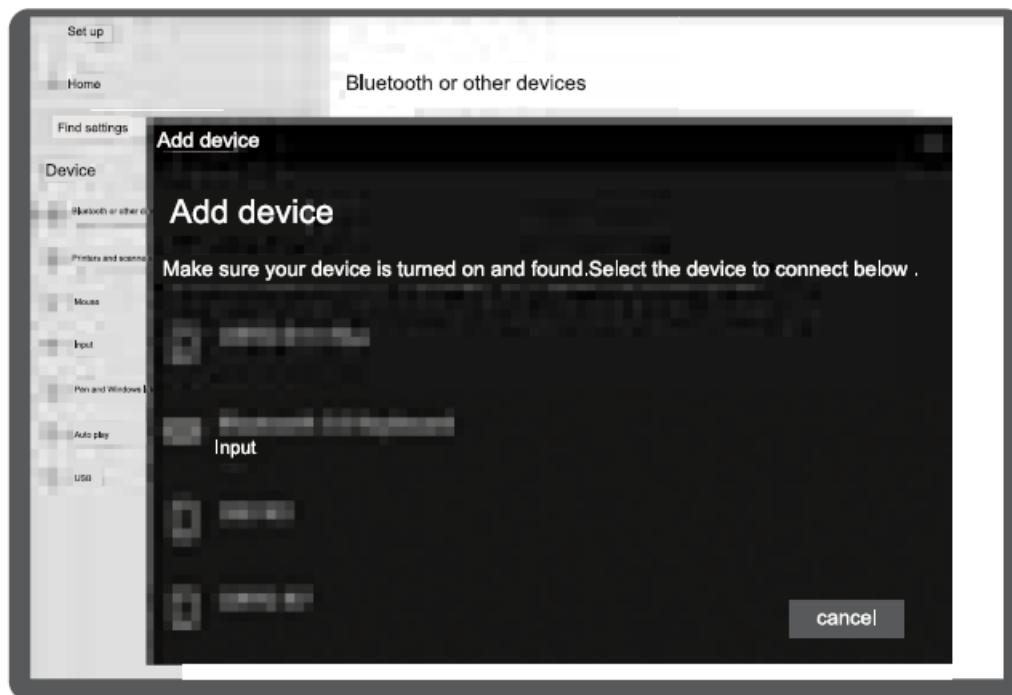


2. Please turn on the Power Switch at the top of the keyboard, red lights up 2 seconds, press the "Bluetooth

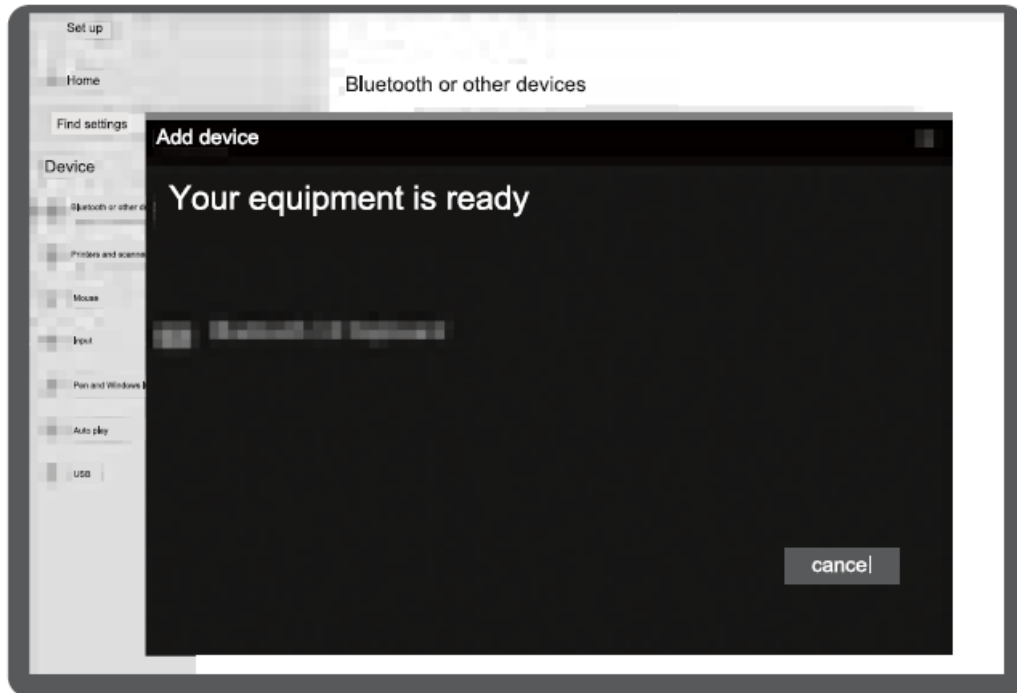
connection button 5 seconds, the blue light will twinkle and into the match mode quickly



3. Select “Bluetooth” in the Add Device to search.



4. You will find the “Bluetooth 3.0 keyboard ” and click to the next step, the device will connect automatically.



RemarkS: After connecting successfully, next time you don't need to pair again, just open the power switch of the Bluetooth keypad and "Bluetooth" of tablet PC, the BT keyboard will search the same device and connect automatically

Technical Specifications

- Keyboard size: 115.43*102.88*11.4 mm
- Weight: 110g
- Standby current:0.8-3mA(light on)
- Working distance: 8m
- Sleep current: 70uA
- Keyboard layout: 28 Keys
- Awaken way: Press any key
- Working voltage: 3.7 V
- Use key the working current: 2-5 mA

Status Display LED

- Connect: Please turn on the power switch at the top of the keyboard, red lights up 2 seconds, press the Bluetooth connection button for 5 seconds, and Blue light will twinkle and into the match mode quickly.
- Low Voltage Indication: When the voltage is below 3.3V, the red light twinkles.
- NUMLOCK: Blue
- Remarks: In order to prolong the life span of the battery, when you do
- The red LED indicator willbe ON while charging.After fully charged the LED will turn off.

Troubleshooting

Please contact the after-sales service.

Copyright

It is forbidden to reproduce any part of this quick start guide without the permission of seller.

Safety instructions

Do not open or repair this device, Do not use the device in a damp environment. Clean the device with a dry cloth.

Warranty

The device is provided with one-year limited hardware warranty from the purchase day.

Keyboard Maintenance

1. Please keep the keyboard away from liquid or humid environments, saunas, swimming pool, and steam room, and don't let the keyboard get wet in the rain.
2. Please don't expose the keyboard at too high or too low-temperature conditions.
3. Please don't put the keyboard under the sun for a long time.
4. Please don't put the keyboard close to the flame, such as on cooking stoves, candles or fireplace.
5. Avoid sharp objects scratching products, and timely to recharge products to ensure the normal use.

FAQ

1. The tablet PC can't connect to the BT keyboard?
 1. At first check the BT keyboard is in the match code state, then open the tablet PC Bluetooth searching.
 2. Make Sure that the battery power of the BT keyboard is not too low, as it may lead to a disconnection between 2 devices when battery power is too low. Please charge the keypad in time via a supplied micro USB charging cable.
2. Is The keyboard indication light always flashing when use?

Keyboard indication always flashing when use, it means the battery will be power off, please charge the keypad in time via supplied micro USB charging cable.
3. The tablet PC display BT keyboard is disconnected?

The BT keyboard will be into a sleeping mode to save the power if not used for a while.you can wake it up by pressing any key on the keyboard,then you can use it again.

Sleep Mode

With no operation for 20 minutes, the number pad will go into sleep mode. Press any key and wait for 3 seconds to wakeup the keypad. During sleep mode, LED indicator will turn off automatically.

Documents / Resources



[Consumer Express 35062141 Bluetooth Numeric Keypad](#) [pdf] User Manual
DESKORY-002, DESKORY002, 2AWWU-DESKORY-002, 2AWWUDESKORY002, 35062141, B
luetooth Numeric Keypad, 35062141 Bluetooth Numeric Keypad, Numeric Keypad, Keypad