


Constructa
LZ11GKU13 Extractor
Hood



Constructa LZ11GKU13 Extractor Hood Mounting Installation Guide

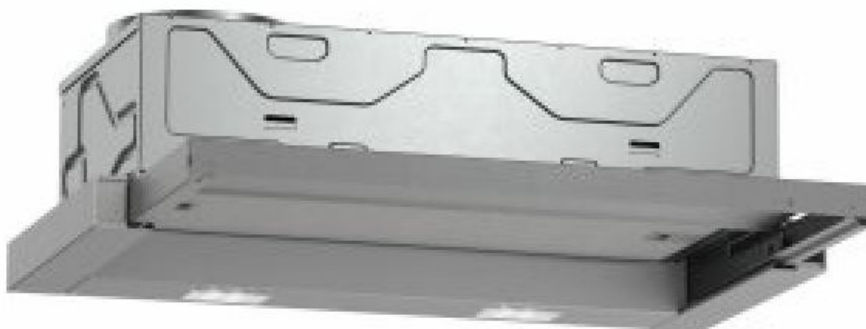
[Home](#) » [Constructa](#) » Constructa LZ11GKU13 Extractor Hood Mounting Installation Guide 

Contents

- [1 Constructa LZ11GKU13 Extractor Hood Mounting](#)
- [2 Product Specifications](#)
- [3 Product Information](#)
- [4 Product Usage Instructions](#)
- [5 FAQ](#)
- [6 General information](#)
- [7 Safe installation](#)
- [8 Included with the appliance](#)
- [9 Installation](#)
- [10 Documents / Resources](#)
 - [10.1 References](#)
- [11 Related Posts](#)

Constructa

Constructa LZ11GKU13 Extractor Hood Mounting



Product Specifications

- **Model:** 9001851918
- **Product Codes:** DWZ1GK1U2, LZ11GKU13, Z51GIU1X3, JZ51GIU1X3, CZ51GIU1X3

Product Information

This product is an appliance that requires installation and comes with various components for proper functioning. It includes safety features to prevent injuries during installation.

Product Usage Instructions

General Information:

- Observe safety instructions during installation.
- Avoid suffocation risks by keeping packaging material away from children.
- Wear protective gloves due to sharp edges in the appliance.

Installation:

• Fitting the Air Recirculation Deflector:

- Remove the flue duct according to the appliance's installation instructions.
- Connect the two parts of the circulating air guide until they click into place.
- Screw the guide to the retaining bracket ensuring the screws are in the correct holes.
- Secure and adjust the hose using the hose clips provided.
- Install the flue duct with the inner section slots facing upwards.

Odour Filter Installation:

• Installing the Odour Filter:

- Remove the grease filter from the appliance.
- Place the odor filter behind the grease filter and secure it using the grid.
- Reinsert the grease filter back into its place.

FAQ

How often should the odor filter be replaced?

For normal use (approx. one hour a day), the odor filter must be replaced every 3 months. It cannot be cleaned or regenerated.

General information

- Read this instruction manual carefully.
- Keep the instruction manual and the product information safe for future reference or for the next owner.
- The appliance can only be used safely if it is correctly installed according to the safety instructions. The installer is responsible for ensuring that the appliance works perfectly at its installation location.
- This instruction manual is intended for the installer of the optional accessory.
- Only a licensed expert may connect the appliance.

- Switch off the power supply before carrying out any work.

Safe installation

Observe the safety instructions when installing the optional accessory.

WARNING – Risk of suffocation!

Children may put packaging material over their heads or wrap themselves up in it and suffocate.

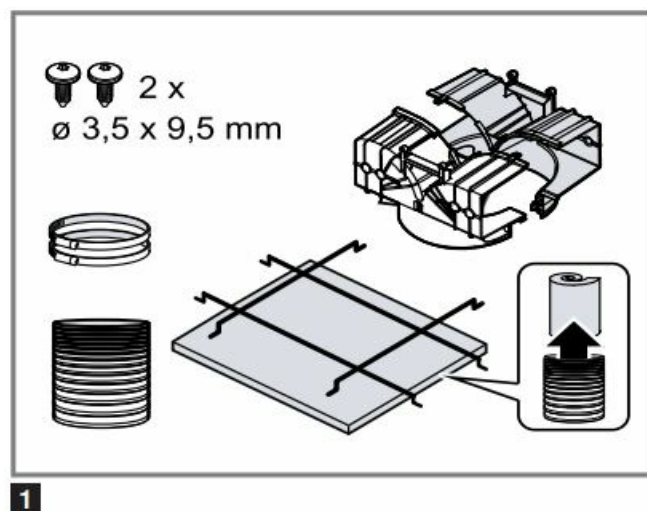
- Keep packaging material away from children.
- Do not let children play with packaging material.

WARNING – Risk of injury!

- Components inside the appliance may have sharp edges.
- Wear protective gloves.

Included with the appliance

After unpacking all parts, check for any damage in transit and the completeness of the delivery.



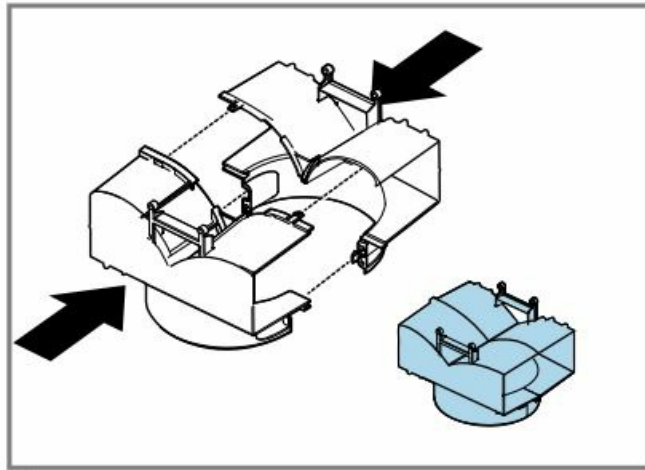
Installation

Fitting the air recirculation deflector

1. Remove the flue duct.

You can find information on how to remove the flue duct in the installation instructions for your appliance.

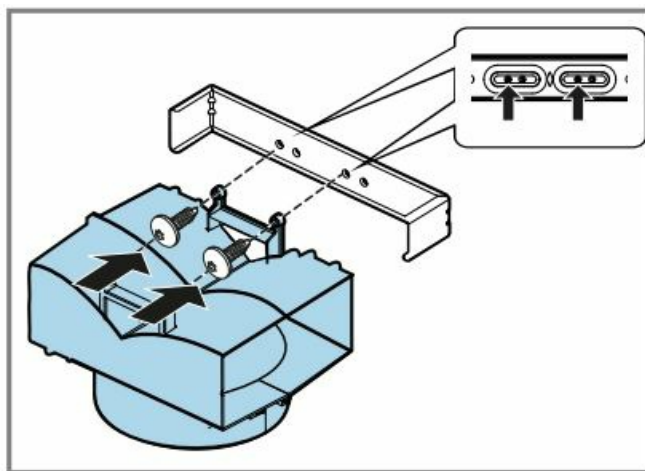
2. Push the two parts of the circulating air guide together until they click into place. → Fig. 2



2

3. Screw the circulating air guide to the retaining bracket. → Fig. 3

The screws must each be screwed into the lefthand hole.

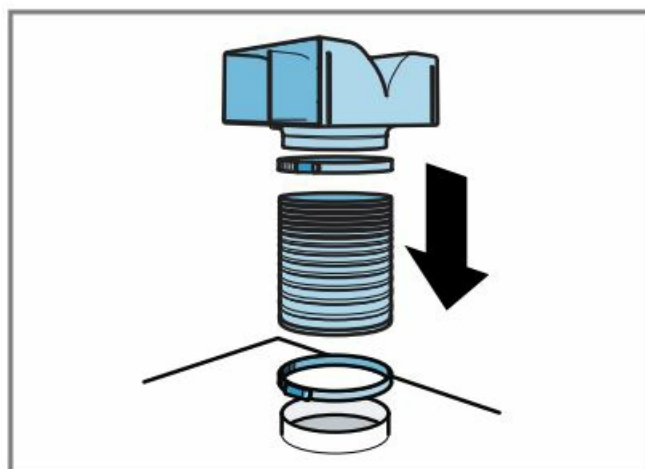


3

4. Tighten and, if required, shorten the hose.

5. Use the 2 hose clips to secure the hose to the circulating- air guide and the air-pipe connector.

Smooth the hose at the top and bottom at the points at which the hose clamps are attached. → Fig. 4



4

6. Fit the flue duct.

- The slots on the inner flue duct section point upwards.
- You can find information about the installation of the flue duct in the installation instructions for your

appliance.

Odor filter for recirculating air mode

- Odor filters bind odorous substances in air recirculation mode. Regularly replaced odor filters guarantee a high level of odor removal.
- With normal use (approx. one hour a day), the odour filter must be replaced every 3 months. The odor filter cannot be cleaned or regenerated.
- You can obtain odor filters from the after-sales service or the online shop. Only use original odor filters.

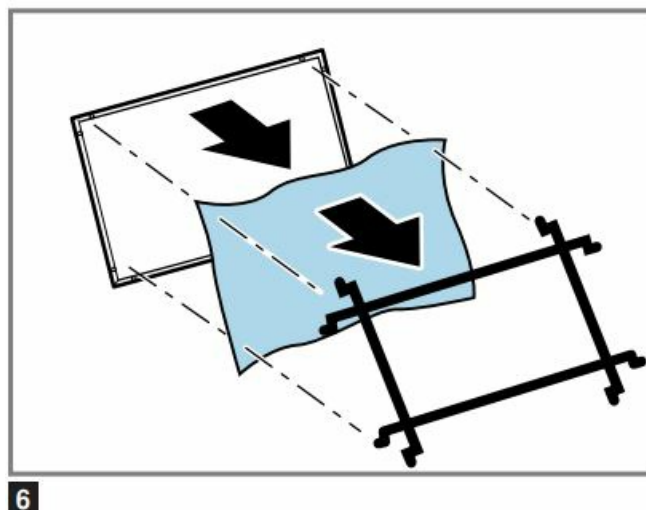
Installing the odor filter

1. Remove the grease filter.
2. Place the odor filter onto the rear of the grease filter and use the grid to secure the odor filter to the outer holes.
→ Fig. 5
3. Insert the grease filter.

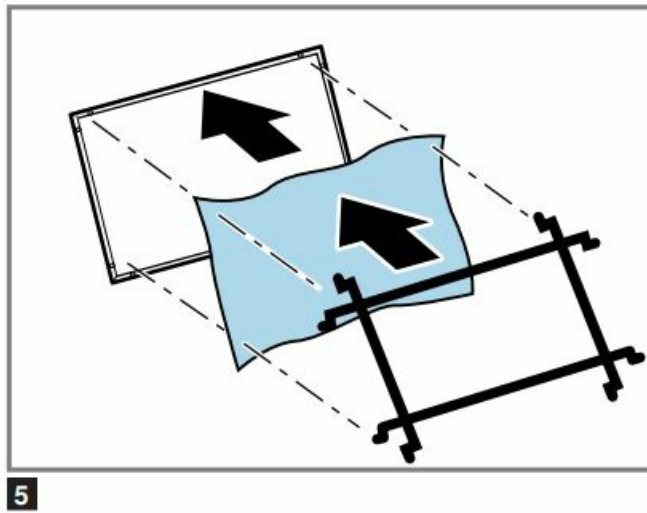
Information about installing the grease filter can be found in the operating instructions for your appliance.

Replacing the odor filters

1. Remove the grease filter.
2. Remove the grid and the odor filter. → Fig. 6



3. Place the new odor filter onto the rear of the grease filter and use the grid to secure the odor filter to the outer holes. → Fig. 5



4. Insert the grease filter.

Information about installing the grease filter can be found in the operating instructions for your appliance.

5. Dispose of old odor filters with the residual waste.

The odor filters do not contain any harmful substances.

Setting the saturation indicator

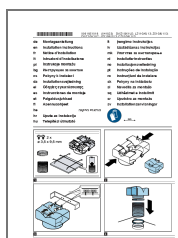
The saturation indicator must be adjusted depending on the filter used.

Note: The saturation indicator for the grease filter is set as standard. For use in the circulating-air mode, you must also activate the saturation indicator for the odor filter.

Requirement: The appliance is switched off.

- Press and hold 1 and 2 for 3 seconds.
- 1 lights up briefly first and then 1 and 2 briefly light up at the same time.
- The saturation indicator for the odor filters is activated.

Documents / Resources



[Constructa LZ11GKU13 Extractor Hood Mounting \[pdf\] Installation Guide](#)
CZ51GIU1X3, DWZ1GK1U2, LZ11GKU13, LZ11GKU13 Extractor Hood Mounting, LZ11GKU13
, Extractor Hood Mounting, Hood Mounting

References

- [User Manual](#)

[Manuals+.](#) [Privacy Policy](#)

This website is an independent publication and is neither affiliated with nor endorsed by any of the trademark owners. The "Bluetooth®" word mark and logos are registered trademarks owned by Bluetooth SIG, Inc. The "Wi-Fi®" word mark and logos are registered trademarks owned by the Wi-Fi Alliance. Any use of these marks on this website does not imply any affiliation with or endorsement.