



Contents [[hide](#)]

1 Constructa CD639650 Extractor Hood

2 1. Safety

2.1 1.1 General information

2.2 1.2 Intended use

2.3 1.3 Restriction on user group

2.4 1.4 Safe use

3 2. Avoiding material damage

4 3. Environmental protection and saving energy

5 4. Operating modes

6 5. Familiarising yourself with your appliance

7 6. Before using for the first time

8 7. Basic operation

8.1 7.1 Selecting a fan setting

9 8. Cleaning and servicing

9.1 8.1 Cleaning the appliance

9.2 8.2 Cleaning products

9.3 8.3 Cleaning controls and lights

9.4 8.4 Removing the grease filter

9.5 8.5 Cleaning grease filters manually

9.6 8.6 Cleaning grease filters in the dishwasher

9.7 8.7 Fitting the grease filters

10 9. Troubleshooting

10.1 9.1 Malfunctions

11 10. Disposal

12 11. Customer Service

12.1 11.1 Product number (E-Nº) and production number (FD)

13 12. Accessories

14 13. Installation instructions

14.1 13.2 Appliance dimensions

14.2 13.3 Safety clearances

14.3 13.4 Secure installation

14.4 13.5 General information

14.5 13.6 Instructions for the electrical connection

14.6 13.7 Information on the installation situation

14.7 13.8 Instructions for the exhaust air pipe

14.8 13.9 Instructions for the air extraction mode

14.9 13.10 Installation

15 Specifications

16 FAQ

16.1 Q: Can I use industrial cleaning agents on the aluminum parts of the extractor hood?

16.2 Q: How should I dispose of the packaging components?

16.3 Q: What should I do if moisture penetrates the appliance?

17 Documents / Resources

17.1 References

18 Related Posts

Constructa CD639650 Extractor Hood

USER MANUAL

MODEL: CD639650, CD636650, CD629650, CD626650

1. Safety

Observe the following safety instructions.

1.1 General information

- ı Read this instruction manual carefully.
- ı Keep the instruction manual and the product information safe for future reference or for the next owner.
- ı Do not connect the appliance if it has been damaged in transit.

1.2 Intended use

Only use this appliance:

- ı For extracting cooking vapour.
- ı in private households and in enclosed spaces in a domestic environment.
- ı up to an altitude of max. 2000 m above sea level.

Do not use the appliance:

- ı With an external timer.

1.3 Restriction on user group

This appliance may be used by children aged 8 or over and by people who have reduced physical, sensory or mental abilities or inadequate experience and/or knowledge, provided that they are supervised or have been instructed on how to use the appliance safely and have understood the resulting dangers.

Do not let children play with the appliance.

Children must not perform cleaning or user maintenance unless they are at least 15 years old and are being supervised.

Keep children under the age of 8 years away from the appliance and power cable

1.4 Safe use

WARNING – Risk of suffocation!

Children may put packaging material over their heads or wrap themselves up in it and suffocate.

Keep packaging material away from children.

Do not let children play with packaging material.

Children may breathe in or swallow small parts, causing them to suffocate.

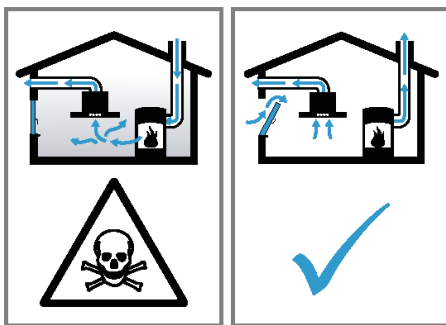
Keep small parts away from children.

Do not let children play with small parts.

WARNING – Risk of poisoning!

Risk of poisoning from flue gases being drawn back in. Room-air-dependent heat-producing appliances (e.g. gas, oil, wood or coal-operated heaters, continuous flow heaters or water heaters) obtain combustion air from the room in which they are installed and discharge the exhaust gases into the open through an exhaust gas system (e.g. a chimney). With the extractor hood switched on, air is extracted from the kitchen and the adjacent rooms.

Without an adequate supply of air, the air pressure falls below atmospheric pressure. Toxic gases from the chimney or the extraction shaft are sucked back into the living space.



- Always ensure adequate fresh air in the room if the appliance is being operated in exhaust air mode at the same time as a room-air-dependent heat-producing appliance is being operated.
- It is only possible to safely operate the appliance if the pressure in the room in which the heating appliance is installed does not fall below 4 Pa (0.04 mbar). This can be achieved whenever the air needed for combustion is able to enter through openings that cannot be sealed, for example in doors, windows, incoming/exhaust air wall boxes or by other technical means. An incoming/exhaust air wall box alone is not sufficient to ensure compliance with the limit.
- In any case, consult your responsible chimney sweep. They are able to assess the house's entire ventilation setup and will suggest the suitable ventilation measures to you.
- Unrestricted operation is possible if the appliance is operated exclusively in circulating-air mode.

WARNING – Risk of fire!

Fatty deposits in the grease filters may catch fire.

- Never operate the appliance without a grease filter.
- Clean the grease filters regularly.
- Never work with naked flames close to the appliance (e.g. flambéing).
- Do not install the appliance near a solid fuel heating appliance (e.g. wood- or coal-burn-ing) unless the heating appliance has a sealed, non-removable cover. There must be no flying sparks.

Hot oil or grease ignites very quickly.

- Always supervise hot oil and fat.
- Never extinguish burning oil or fat with water. Switch off the cooking zone. Extinguish flames carefully using a lid, fire blanket or something similar.

WARNING – Risk of burns!

- The accessible parts of the appliance become hot during operation.
- Never touch these hot parts.
- Keep children at a safe distance.
- The appliance becomes hot during operation.
- Allow the appliance to cool down before cleaning.

WARNING – Risk of injury!

- Components inside the appliance may have sharp edges.
- Carefully clean the appliance interior.
- Items placed on the appliance may fall off.
- Do not place any objects on the appliance. Changes to the electrical or mechanical as-sembly are dangerous and may lead to mal-functions.
- Do not make any changes to the electrical or mechanical assembly.
- The light emitted by LED lights is very dazzling, and can damage the eyes (risk group 1).
- Do not look directly into the switched-on LED lights for longer than 100 seconds.

WARNING – Risk of electric shock!

If the appliance or the power cord is damaged, this is dangerous.

- Never operate a damaged appliance. Never pull on the power cord to unplug the appliance.
- Always unplug the appliance at the mains.
- If the appliance or the power cord is damaged, immediately unplug the power cord or switch off the fuse in the fuse box.
- Call customer services. Page 22

Improper repairs are dangerous.

- Repairs to the appliance should only be carried out by trained specialist staff.
- Only use genuine spare parts when repairing the appliance.
- If the power cord of this appliance is damaged, it must be replaced by trained specialist staff.

An ingress of moisture can cause an electric shock.

- Before cleaning, pull out the mains plug or switch off the fuse in the fuse box.
- Do not use steam- or high-pressure cleaners to clean the appliance.

WARNING – Risk of explosion!

Highly caustic alkaline or highly acidic cleaning agents in conjunction with aluminium parts in the interior of the appliance may cause explosions.

- Never use highly caustic alkaline or highly acidic cleaning agents. In particular, do not use commercial or industrial cleaning agents in conjunction with aluminium parts, e.g. grease filter on extractor hoods.

WARNING – Risk of fire!

Fatty deposits in the grease filters may catch fire.

Clean the grease filters regularly.

2. Avoiding material damage

Avoiding material damage

ATTENTION

Condensate may cause corrosion damage.

- To prevent condensation from building up, switch on the appliance during cooking.

If moisture gets into the controls, this may result in damage.

- Never clean controls with a wet cloth.
- Incorrect cleaning damages the surfaces.

Follow the cleaning instructions.

- Do not use harsh or abrasive detergents.
- Clean stainless steel surfaces in the direction of the finish only.
- Never clean controls with stainless steel cleaners.

Condensation that flows back in may damage the appliance.

- To prevent condensate from returning, fit the exhaust air pipe with a 1° gradient from the appliance.

If you put incorrect stress on the design elements, they may break off.

- Do not pull design elements.
- Do not place objects on the design elements or hang objects from them.

There is a risk of surface damage if you do not peel off the protective film.

- Remove the protective film from all parts of the appliance before using for the first time.

- Painted surfaces are easily damaged.
- Follow the cleaning instructions.
“Cleaning the appliance”, Page 19
- Ensure that the painted surfaces are not scratched.

3. Environmental protection and saving energy

3.1 Disposing of packaging

The packaging materials are environmentally compatible and can be recycled.

- Sort the individual components by type and dispose of them separately.

3.2 Saving energy

If you follow these instructions, your appliance will use less power.

Adjust the fan speed to the amount of steam produced during cooking.

- The lower the fan speed, the less energy is consumed.

If cooking produces large amounts of steam, select a higher fan speed in good time.

- The odours are distributed around the room less. Switch off the lighting if it is no longer required.
- When the lighting is switched off, it does not consume any energy.

Clean or replace the filters at regular intervals.

- The effectiveness of the filter is retained.
- Put the cooking lid on.
- The cooking vapours and condensation are reduced.
- Only use the additional functions if required.
- Switching off additional functions reduces power consumption.

You can find product information in accordance with (EU) 65/2014 and (EU) 66/2014 below the energy label and online on the product page for your appliance.

4. Operating modes

You can use your appliance in air extraction mode or circulating-air mode.

4.1 Air extraction mode

The air which is drawn in is cleaned by the grease filters and conveyed to the exterior by a pipe system.



The air must not be discharged into a flue that is used for exhausting fumes from appliances burning gas or other fuels (not applicable to appliances that only discharge the air back into the room).

- If the exhaust air is to be conveyed into a non-functioning smoke or exhaust gas flue, you must obtain the consent of the heating engineer responsible.
- If the exhaust air is conveyed through the external wall, a telescopic duct should be used.

4.2 Air recirculation

The air which is drawn in is cleaned by the grease filters and an odour filter, and conveyed back into the room.



To bind odours in air recirculation mode, you must install an odour filter. The different options for operating the appliance in air circulation mode can be found in our catalogue.

Alternatively, ask your dealer. The required accessories are available from specialist retailers, from our after-sales service or from the online shop.


“Accessories”, Page 22

5. Familiarising yourself with your appliance

5.1 Control elements

You can use the controls to configure all functions of your appliance and to obtain information about the operating status.



1	Switching on fan setting 1
2	Switching on fan setting 2
3	Switching on fan setting 3
	Switching the lighting on or off

6. Before using for the first time

Before using for the first time

Configure the settings for initial start-up. Clean the appliance and accessories.

6.1 Setting an operating mode

Your appliance is set to air extraction mode by default.

Note: When using it in circulating-air mode, you require additional accessories.

7. Basic operation

7.1 Selecting a fan setting

Notes

- The appliance does not need to be switched on and off separately.
- If more than one button has been pressed, the highest selected fan setting always applies.

1. Press 1 to set fan setting 1.

2. Press to set fan setting 2.

3. Press to set fan setting 3.

7.2 Switching on the lighting

The lighting can be switched on and off independently of the ventilation system.

Press *.

8. Cleaning and servicing

To keep your appliance working efficiently for a long time, it is important to clean and maintain it carefully.

8.1 Cleaning the appliance

Clean the appliance as specified. This will ensure that the different parts and surfaces of the appliance are not damaged by incorrect cleaning or unsuitable cleaning products.

WARNING – Risk of explosion!

Highly caustic alkaline or highly acidic cleaning agents in conjunction with aluminium parts in the interior of the appliance may cause explosions.

Never use highly caustic alkaline or highly acidic cleaning agents. In particular, do not use commercial or industrial cleaning agents in conjunction with aluminium parts, e.g. grease filter on extractor hoods.

WARNING – Risk of electric shock!

An ingress of moisture can cause an electric shock.

Before cleaning, pull out the mains plug or switch off the fuse in the fuse box.

Do not use steam- or high-pressure cleaners to clean the appliance.

WARNING – Risk of burns!

The appliance becomes hot during operation.

Allow the appliance to cool down before cleaning.

WARNING – Risk of injury!

Components inside the appliance may have sharp edges.

Carefully clean the appliance interior.

1. Observe the information regarding the cleaning agents.

“Cleaning products”, Page 20

2. Clean as follows, depending on the surface:

Clean stainless steel surfaces in the direction of the finish using a sponge cloth and hot soapy water.

Clean painted surfaces using a damp sponge cloth and hot soapy water.

Clean aluminium using a soft cloth and glass cleaner.

Clean plastic using a soft cloth and glass cleaner.

Clean glass using a soft cloth and glass cleaner.

3. Dry with a soft cloth.

4. Apply a thin layer of the stainless steel cleaning product to stainless steel surfaces using a soft cloth.

You can obtain stainless steel cleaning products from the after-sales service or the online shop.

8.2 Cleaning products

You can obtain suitable cleaning products from aftersales service or the online shop.

WARNING – Risk of electric shock!

An ingress of moisture can cause an electric shock.

Before cleaning, pull out the mains plug or switch off the fuse in the fuse box.

Do not use steam- or high-pressure cleaners to clean the appliance.

WARNING – Risk of burns!

The appliance becomes hot during operation.

Allow the appliance to cool down before cleaning.

ATTENTION

Unsuitable cleaning products may damage the surfaces of the appliance.

Do not use harsh or abrasive detergents.

Do not use cleaning products with a high alcohol content.

Do not use hard scouring pads or cleaning sponges.

Only use glass cleaners, glass scrapers or stainless steel care products if recommended in the cleaning instructions for the relevant part.

Wash sponge cloths thoroughly before use.

8.3 Cleaning controls and lights

WARNING – Risk of electric shock!

Penetrating moisture may cause an electric shock.

Do not use wet sponge cloths.

1. Observe the information regarding the cleaning agents.

“Cleaning products”, Page 20

2. Clean using a damp sponge cloth and hot soapy water.

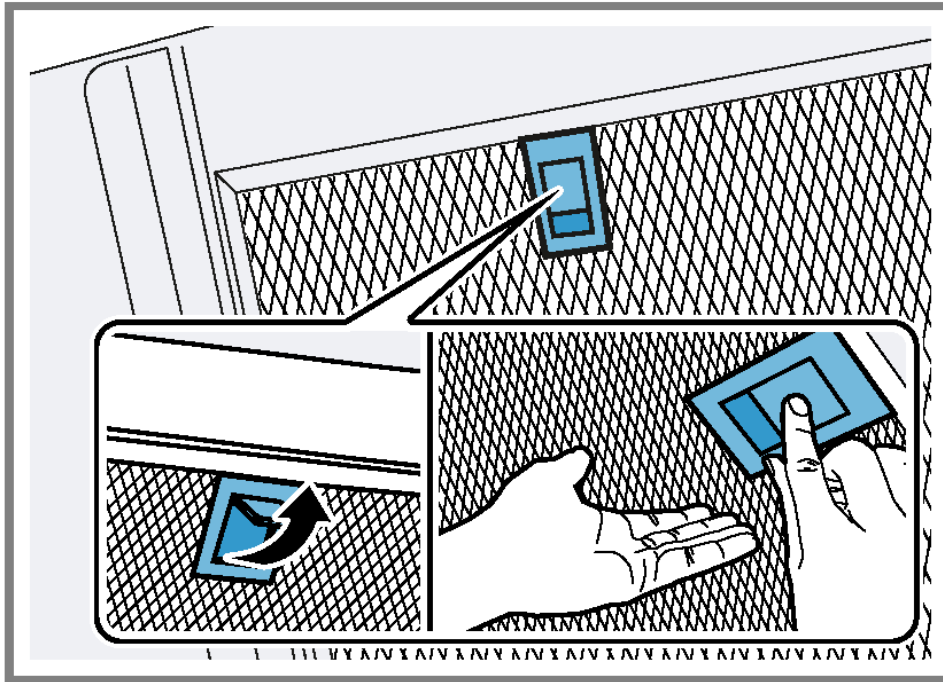
3. Dry with a soft cloth.

8.4 Removing the grease filter

1. ATTENTION – Falling grease filters may damage the hob below.

Grip below the grease filter with one hand.

Open the lock on the grease filter and fold down the grease filter.



2. Remove the grease filters from the holders.

To prevent grease from dripping, hold the grease filter horizontally.

8.5 Cleaning grease filters manually

The grease filters filter the grease from the cooking vapour.

Regularly cleaned grease filters guarantee a high level of grease removal. We recommend cleaning the grease filters every two months.

WARNING – Risk of fire!

Fatty deposits in the grease filters may catch fire.

Clean the grease filters regularly.

Requirement: The grease filters have been removed.

“Cleaning products”, Page 20

1. Observe the information regarding the cleaning agents.

“Cleaning products”, Page 20

2. Soak the grease filter in hot soapy water.

Use special grease solvent for stubborn dirt. You can obtain grease solvents from customer service or the online shop.

3. Use a brush to clean the grease filters.

4. Rinse the grease filters thoroughly.

5. Allow the grease filters to drain.

8.6 Cleaning grease filters in the dishwasher

The grease filters filter the grease from the cooking vapour.

Regularly cleaned grease filters guarantee a high level of grease removal. We recommend cleaning the grease filters every two months.

WARNING – Risk of fire!

Fatty deposits in the grease filters may catch fire.

Clean the grease filters regularly.

ATTENTION

The grease filters may become damaged if they are squeezed in the dishwasher.

Do not squeeze the grease filters.

Note: When cleaning the grease filter in the dishwasher, light discolouration may occur.

This discolouration has no effect on the performance of the metal grease filters.

Requirement: The grease filters have been removed.

“Cleaning products”, Page 20

1. Observe the information regarding the cleaning agents.

“Cleaning products”, Page 20

2. Place the grease filters loosely into the dishwasher.

Do not clean heavily soiled grease filters with utensils.

Use special grease solvent for stubborn dirt. You can obtain grease solvents from customer service or the online shop.

3. Start the dishwasher.

Select a temperature of no more than 70 °C.

4. Allow the grease filters to drain.

8.7 Fitting the grease filters

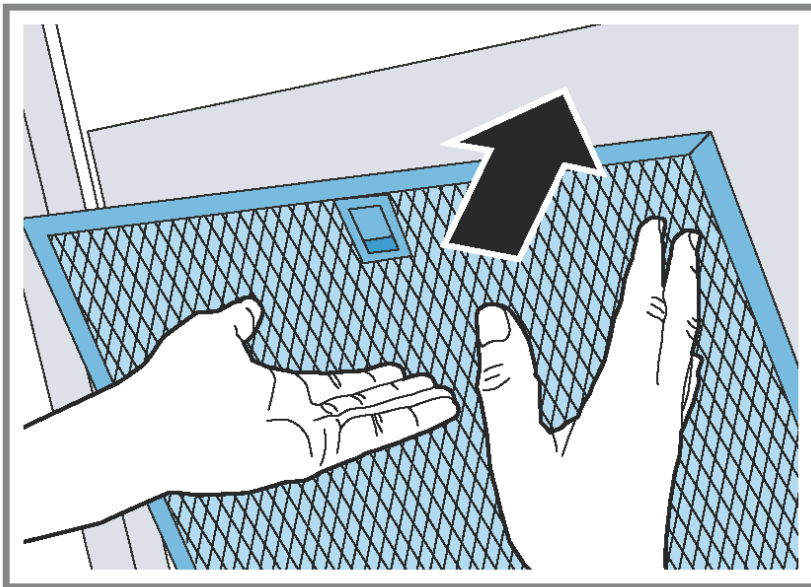
ATTENTION

Falling grease filters may damage the hob below.

Grip below the grease filter with one hand.

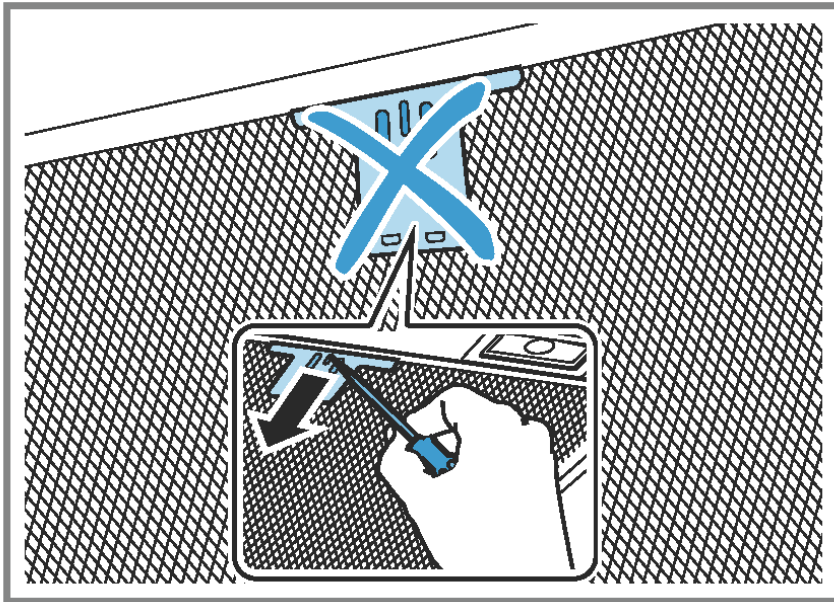
1. Insert the grease filters.

2. Fold the grease filters upwards and engage the locks.



3. Ensure that the locks engage.

4. If the grease filter has been inserted incorrectly, carefully push the lock forwards, remove the grease filter and insert it correctly.



9. Troubleshooting

You can rectify minor faults on your appliance yourself. Read the troubleshooting information before contacting aftersales service. This will avoid unnecessary costs.

WARNING – Risk of injury!

Improper repairs are dangerous.

Repairs to the appliance should only be carried out by trained specialist staff.

If the appliance is defective, call Customer Service.

“Customer Service”, Page 22

WARNING – Risk of electric shock!

Improper repairs are dangerous.

Repairs to the appliance should only be carried out by trained specialist staff.

Only use genuine spare parts when repairing the appliance.

If the power cord of this appliance is damaged, it must be replaced by trained specialist staff.

9.1 Malfunctions

Fault Cause and troubleshooting

The appliance is not working. The mains plug of the power cord is not plugged in.

Connect the appliance to the power supply.

The circuit breaker in the fuse box has tripped.

Check the circuit breaker in the fuse box.

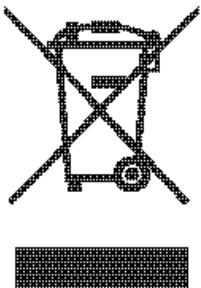
10. Disposal

10.1 Disposing of old appliance

Valuable raw materials can be reused by recycling.

1. Unplug the appliance from the mains.
2. Cut through the power cord.
3. Dispose of the appliance in an environmentally friendly manner.

Information about current disposal methods are available from your specialist dealer or local authority.



This appliance is labelled in accordance with European Directive 2012/19/EU concerning used electrical and electronic appliances (waste electrical and electronic equipment – WEEE).

The guideline determines the framework for the return and recycling of used appliances as applicable throughout the EU.

11. Customer Service

Customer Service

Function-relevant genuine spare parts according to the corresponding Ecodesign Order

can be obtained from Customer Service for a period of at least 10 years from the date on which your appliance was placed on the market within the European Economic Area.

Note: Under the terms of the manufacturer's warranty the use of Customer Service is free of charge.

Detailed information on the warranty period and terms of warranty in your country is available from our after-sales service, your retailer or on our website.

If you contact Customer Service, you will require the product number (E-Nº) and the production number (FD) of your appliance.

The contact details for Customer Service can be found in the enclosed Customer Service directory or on our website.

11.1 Product number (E-Nº) and production number (FD)

You can find the product number (E-Nº) and the production number (FD) on the appliance's rating plate.

Depending on the model, the rating plate can be found:

- Inside the appliance (remove grease filters for access).
- On top of the appliance.

Make a note of your appliance's details and the Customer Service telephone number to find them again quickly.

12. Accessories

You can buy accessories from the after-sales service, from specialist retailers or online. Only use original accessories, as these have been specifically designed for your appliance.

Accessories vary from one appliance to another. When purchasing accessories, always quote the exact product number (E no.) of your appliance. Page 22

You can find out which accessories are available for your appliance in our catalogue, in the online shop or from our after-sales service.

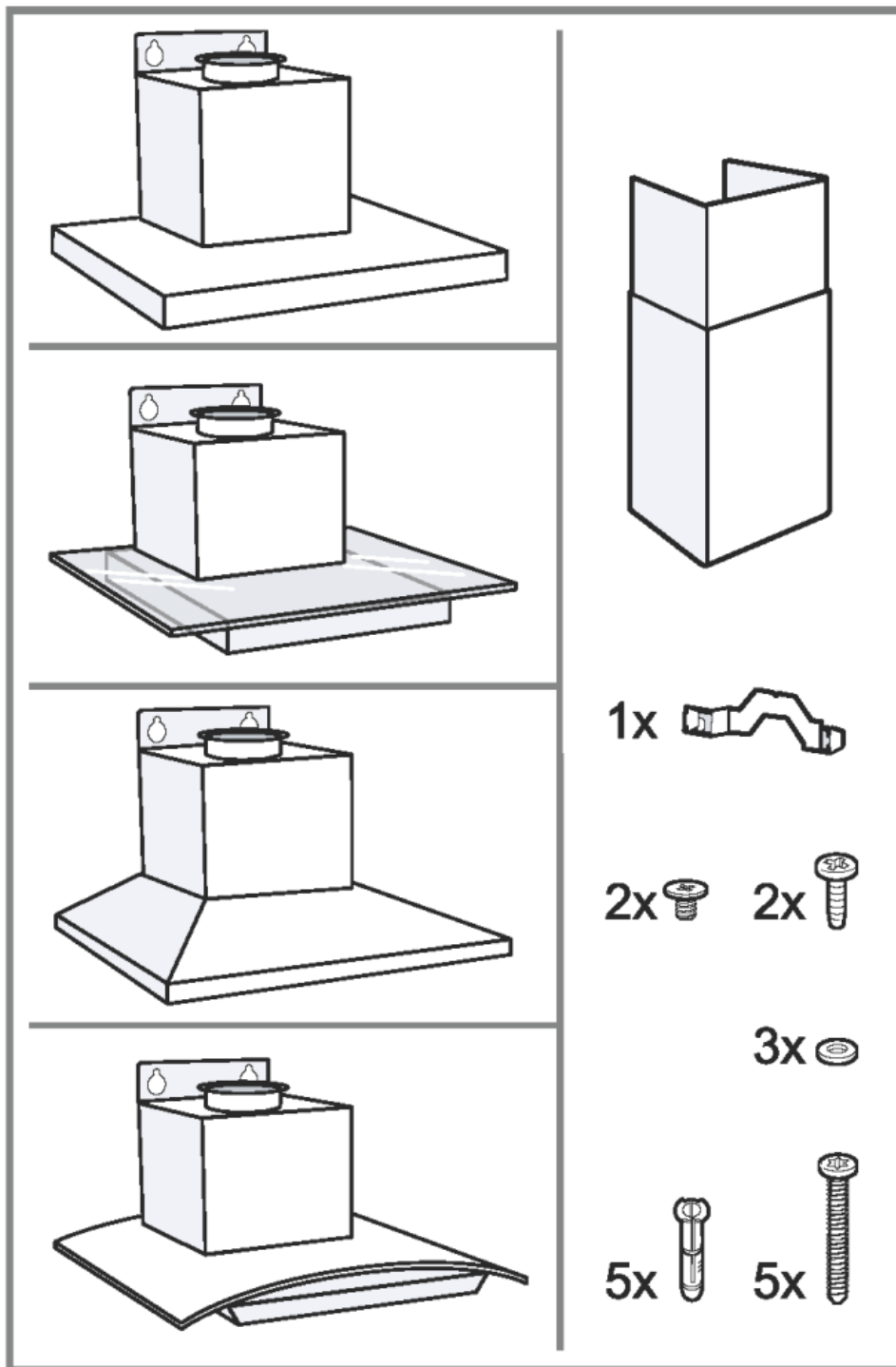
13. Installation instructions

Installation instructions

Observe this information when installing the appliance.

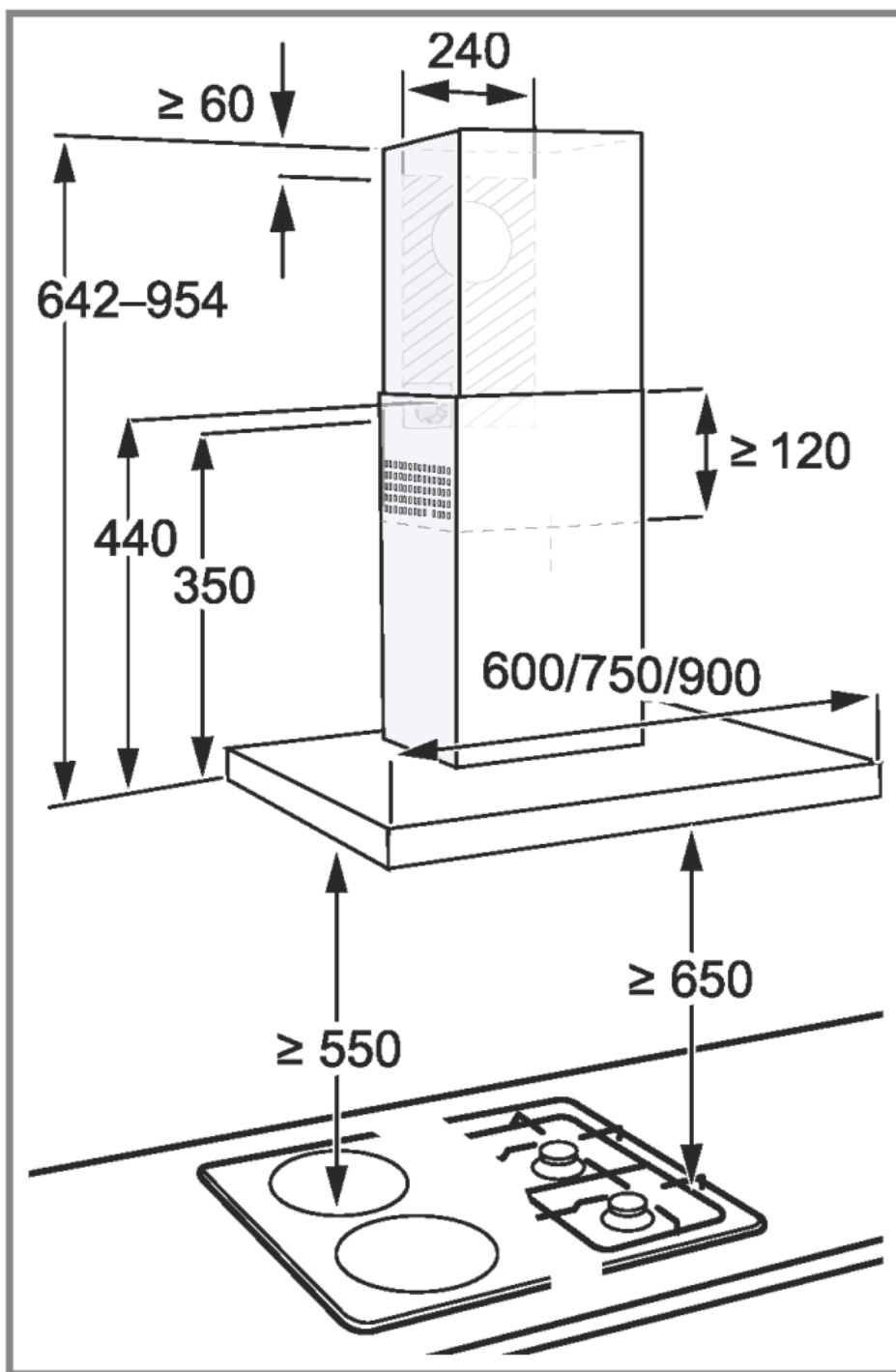
13.1 Scope of delivery

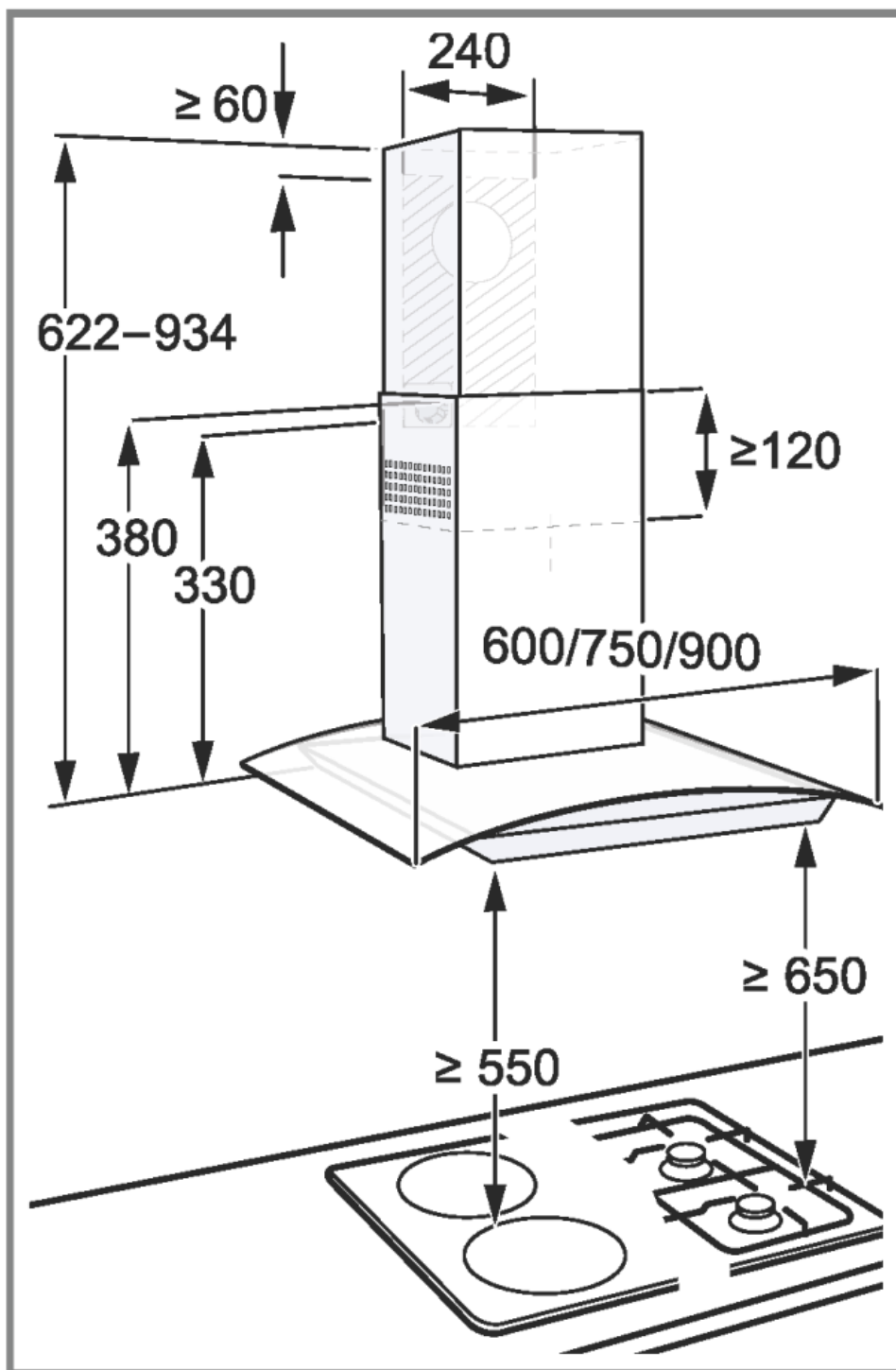
After unpacking all parts, check for any damage in transit and completeness of the delivery.

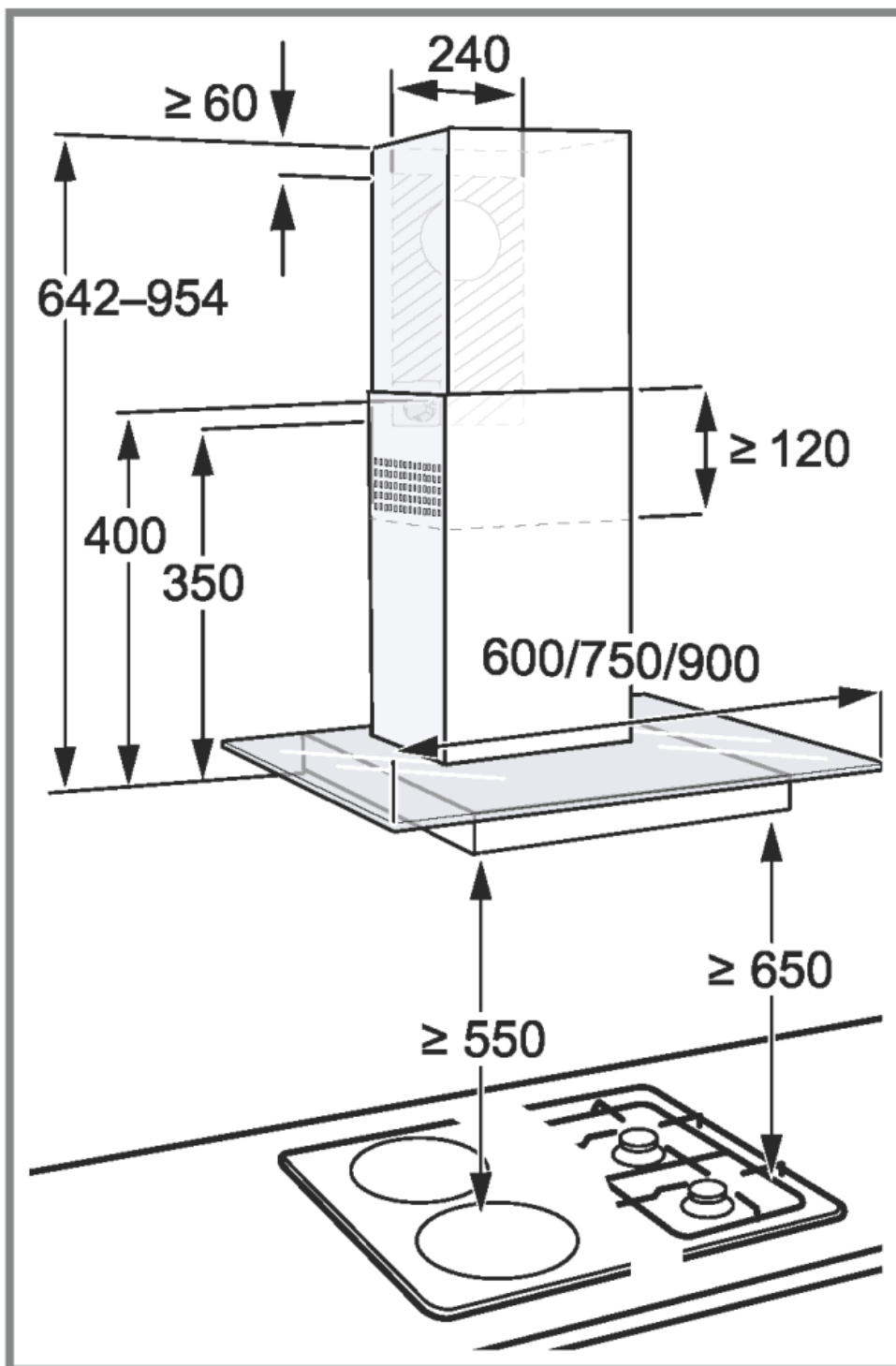


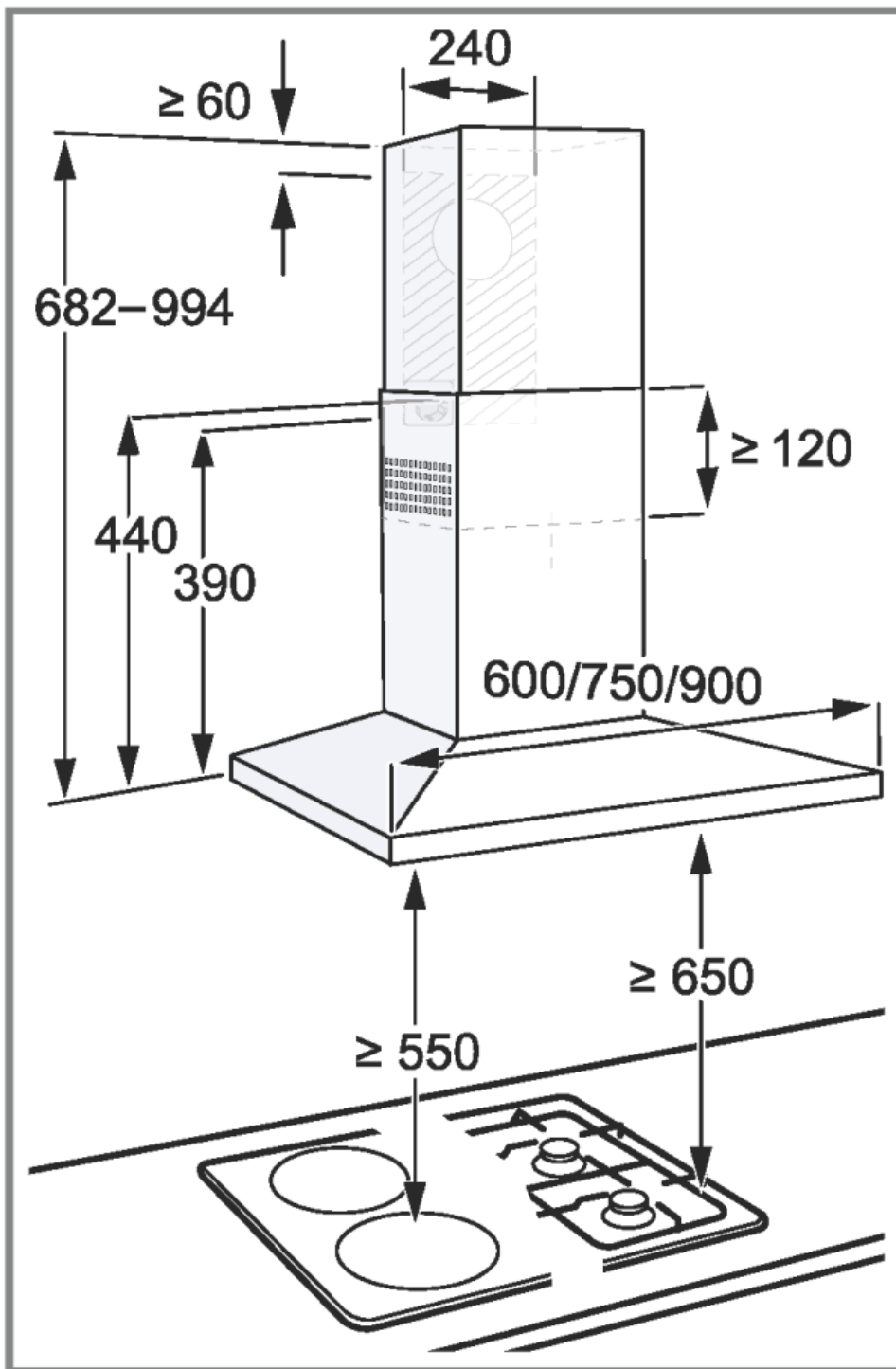
13.2 Appliance dimensions

You will find the dimensions of the appliance here



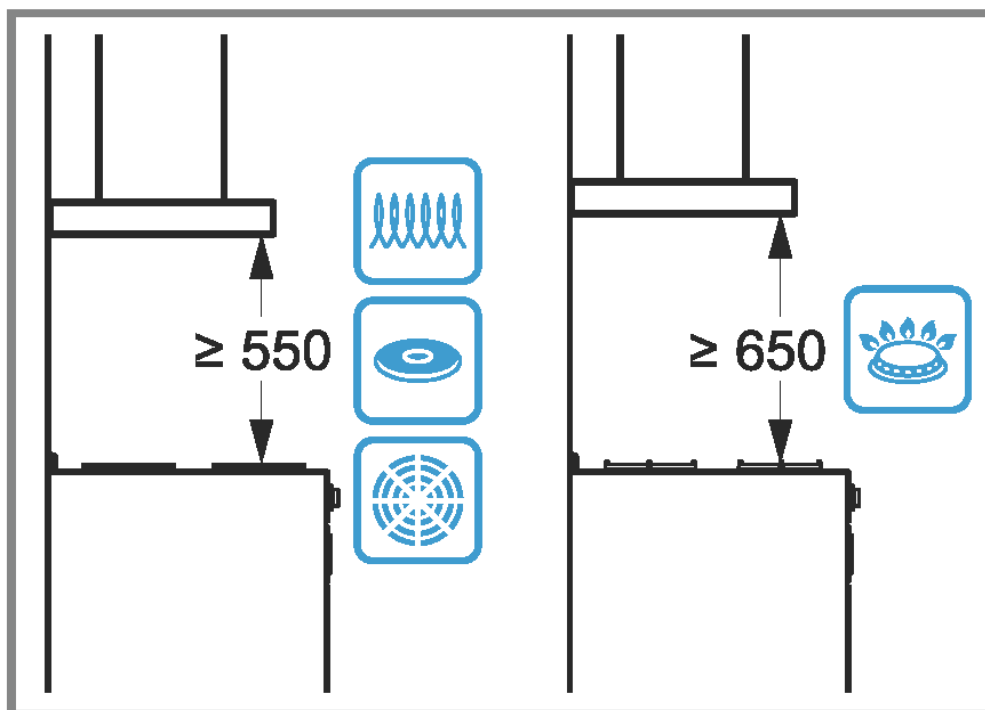






13.3 Safety clearances

Comply with the safety clearances for the appliance.



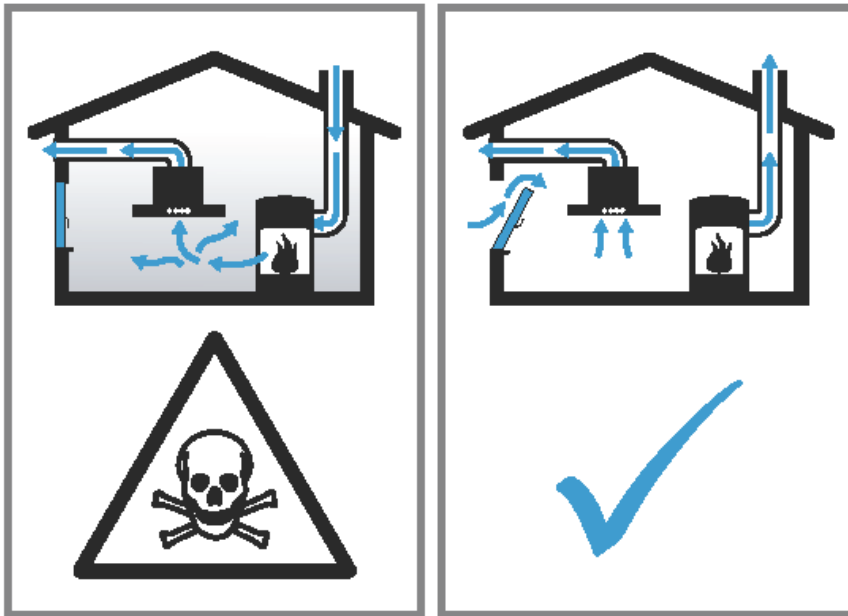
For Australia and New Zealand the minimum safety clearance above electrical cooktops must be 600 mm.

13.4 Secure installation

Follow these safety instructions when installing the appliance.

WARNING – Risk of poisoning!

Risk of poisoning from flue gases being drawn back in. Room-air-dependent heat-producing appliances (e.g. gas, oil, wood or coal-oper-ated heaters, continuous flow heaters or water heaters) obtain combustion air from the room in which they are installed and discharge the exhaust gases into the open through an ex-haust gas system (e.g. a chimney). With the extractor hood switched on, air is extracted from the kitchen and the adjacent rooms. Without an adequate supply of air, the air pres-sure falls below atmospheric pressure. Toxic gases from the chimney or the extraction shaft are sucked back into the living space.



- Always ensure adequate fresh air in the room if the appliance is being operated in exhaust air mode at the same time as a room-air-dependent heat-producing appliance is being operated.
- It is only possible to safely operate the appliance if the pressure in the room in which the heating appliance is installed does not fall below 4 Pa (0.04 mbar). This can be achieved whenever the air needed for combustion is able to enter through openings that cannot be sealed, for example in doors, windows, incoming/exhaust air wall boxes or by other technical means. An incoming/exhaust air wall box alone is not sufficient to ensure compliance with the limit.
- In any case, consult your responsible chimney sweep. They are able to assess the house's entire ventilation setup and will suggest the suitable ventilation measures to you.
- Unrestricted operation is possible if the appliance is operated exclusively in circulating air mode.
- Risk of poisoning from flue gases being drawn back in.
- If an extractor hood with an open-flued heat production source is installed, the power supply for the extractor hood must be provided with a suitable safety switch.
- Risk of poisoning from flue gases being drawn back in.
- Do not emit the exhaust air into a smoke or exhaust gas flue that is in operation.
- Do not emit the exhaust air into a shaft that is used to ventilate installation rooms for heat-producing appliances.
- If the exhaust air is to be conveyed into a smoke or exhaust gas flue, you must obtain

the consent of the heating engineer responsible.

WARNING – Risk of suffocation!

- Children may put packaging material over their heads or wrap themselves up in it and suffocate.
- Keep packaging material away from children.
- Do not let children play with packaging material.

WARNING – Risk of fire!

- The grease deposits in the grease filter may catch fire.
Never work with naked flames close to the appliance (e.g. flambéing).
- Do not install the appliance near a heat-producing appliance for solid fuel (e.g. wood or coal) unless a closed, non-removable cover is present. There must be no flying sparks.

The specified safety clearances must be complied with in order to prevent a build-up of heat.

Observe the specifications for your cooking appliances. If the installation instructions for the cooking appliances specify a different clearance, the larger of the two must always hobs are operated together, the largest specified clearance applies.

The appliance must be installed with no more than one side directly next to a tall unit, an upper cabinet or a wall. The distance between the appliance and the tall cabinet, an upper cabinet or the wall must be at least 50 mm.50 mm.

WARNING – Risk of injury!

Components inside the appliance may have sharp edges.

Wear protective gloves.

The appliance may fall down if it has not been properly fastened in place.

All fastening components must be fixed firmly and securely in place.

The appliance is heavy.

To move the appliance, two people are required.

Use only suitable tools and equipment.

The appliance is heavy.

The appliance must not be fitted directly onto plasterboard or similar lightweight materials.

To ensure correct installation, you must use a material which is sufficiently stable and suitable for both the structural conditions and the weight of the appliance.

Changes to the electrical or mechanical assembly are dangerous and may lead to malfunctions.

Do not make any changes to the electrical or mechanical assembly.

WARNING – Risk of electric shock!

Sharp-edged components inside the appliance may damage the connecting cable.

Do not kink or trap the connecting cable.

If the appliance or the power cord is damaged, this is dangerous.

Never operate a damaged appliance.

Never pull on the power cord to unplug the appliance. Always unplug the appliance at the mains.

If the appliance or the power cord is damaged, immediately unplug the power cord or switch off the fuse in the fuse box.

Call customer services. Page 22 Improper repairs are dangerous.

Repairs to the appliance should only be carried out by trained specialist staff.

Only use genuine spare parts when repairing the appliance.

it must be replaced by trained specialist staff.

Incorrect installation is dangerous.

Connect and operate the appliance only in accordance with the specifications on the rating plate.

Connect the appliance to a power supply with alternating current only via a properly installed socket with earthing.

The protective conductor system of the domestic electrical installation must be properly installed.

Never equip the appliance with an external switching device, e.g. a timer or remote control.

When the appliance is installed, the mains plug of the power cord must be freely accessible.

If free access is not possible, an all-pole isolating switch must be installed in the permanent electrical installation according to the conditions of Overvoltage Category III and according to the installation regulations.

When installing the appliance, check that the power cable is not trapped or damaged.

13.5 General information

Follow these general instructions during the installation.

For the installation, observe the currently valid building regulations and the regulations of the local electricity and gas suppliers.

When discharging the exhaust air, the official and legal regulations, such as the regional building code., must be observed.

In order to freely access the appliance for servicing, select an easy-to-reach installation site.

The surfaces of the appliance are sensitive. Avoid damaging them during installation.

13.6 Instructions for the electrical connection

In order to safely connect the appliance to the electrical system, follow these instructions.

WARNING – Risk of electric shock!

It must always be possible to disconnect the appliance from the electricity supply. The appliance must only be connected to a protective contact socket that has been correctly installed.

The mains plug for the mains power cable must be easily accessible after the appliance is installed.

If this is not possible, an all-pole isolating switch must be integrated into the permanent electrical installation according to the conditions of overvoltage category III and according to the installation regulations.

The permanent electrical installation must only be wired by a professional electrician. We recommend installing a residual-current circuit breaker (RCCB) in the appliance's power supply circuit.

Sharp-edged components inside the appliance may damage the connecting cable.

Do not kink or trap the connecting cable.

The connection data can be found on the rating plate. Page 22

The connecting cable is approx. 1.30 m long.

This appliance complies with the EC interference suppression regulations.

The appliance corresponds to protection class 1. You should therefore only use the appliance with a protective earth connection.

Do not connect the appliance to the power supply during installation.

Ensure that the protection against contact is guaranteed during installation.

13.7 Information on the installation situation

Install this appliance on the kitchen wall.

To install additional special accessory parts, observe the enclosed installation instructions.

The width of the extractor hood must correspond at least with the width of the hob.

To optimally detect the cooking vapours, install the appliance in the middle of the hob.

13.8 Instructions for the exhaust air pipe

The appliance manufacturer does not provide any warranty for faults attributable to the pipeline.

Use a short, straight exhaust air pipe with as large a pipe diameter as possible.

Long, rough exhaust air pipes, many pipe bends or small pipe diameters reduce the suction power and increase the fan noise.

Use an exhaust pipe that is made of non-combustible material.

To prevent condensate from returning, fit the exhaust pipe with a 1° gradient from the appliance.

13.9 Instructions for the air extraction mode

For air extraction mode, a one-way flap should be installed.

Notes

If a one-way flap is not included with the appliance, one can be ordered from a specialist retailer.

If the exhaust air is conveyed through the external wall, a telescopic duct should be used.

13.10 Installation

Checking the wall

1. Check whether the wall is vertical and has sufficient load-bearing capacity.

The maximum weight of the appliance is 40 kg.

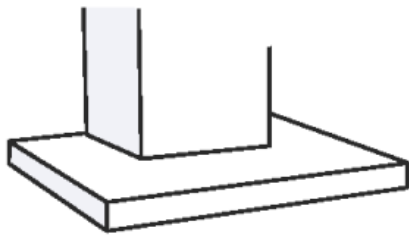
2. Drill the hole depth in accordance with the length of the screws.
3. Use the enclosed screws and wall plugs.

The enclosed screws and wall plugs are suitable for use with solid brickwork. Use suitable fixing material for other structures, e.g. plasterboard, porous concrete, poroton bricks.

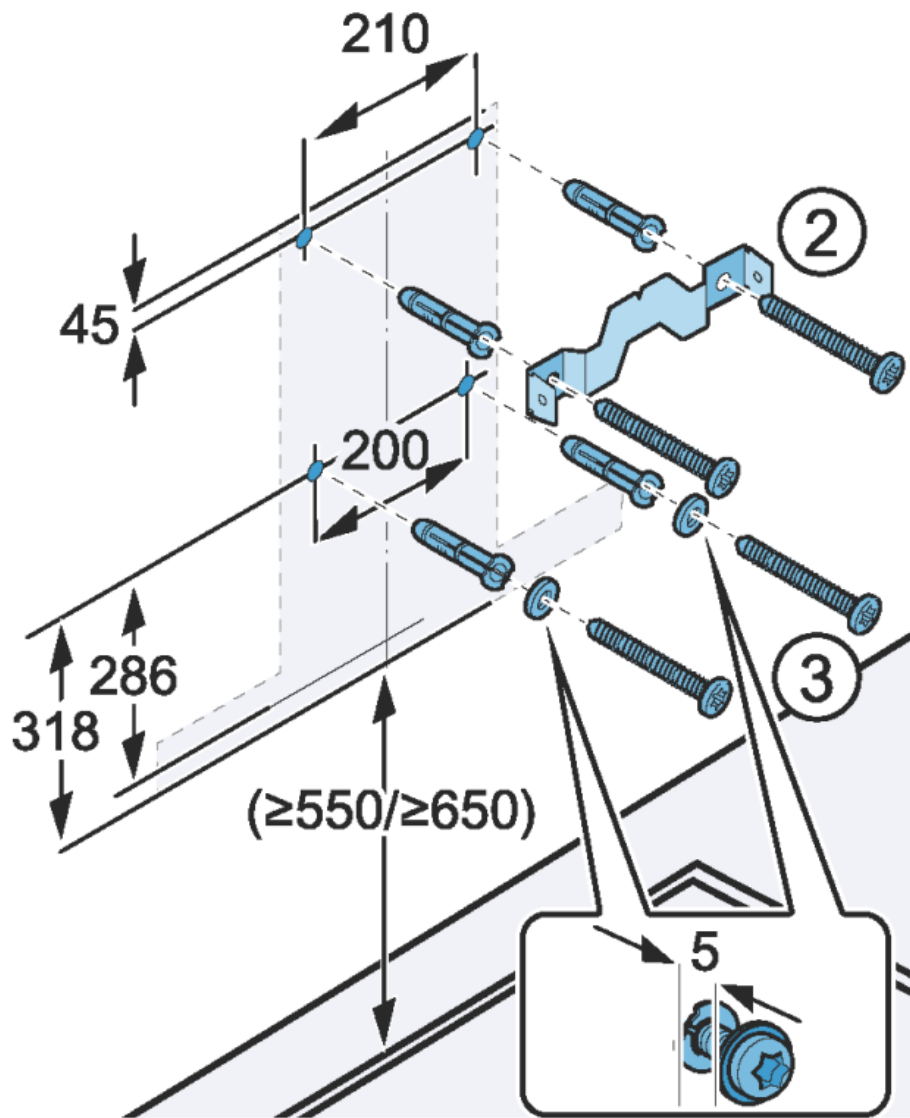
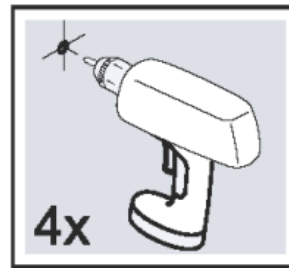
Preparing the wall

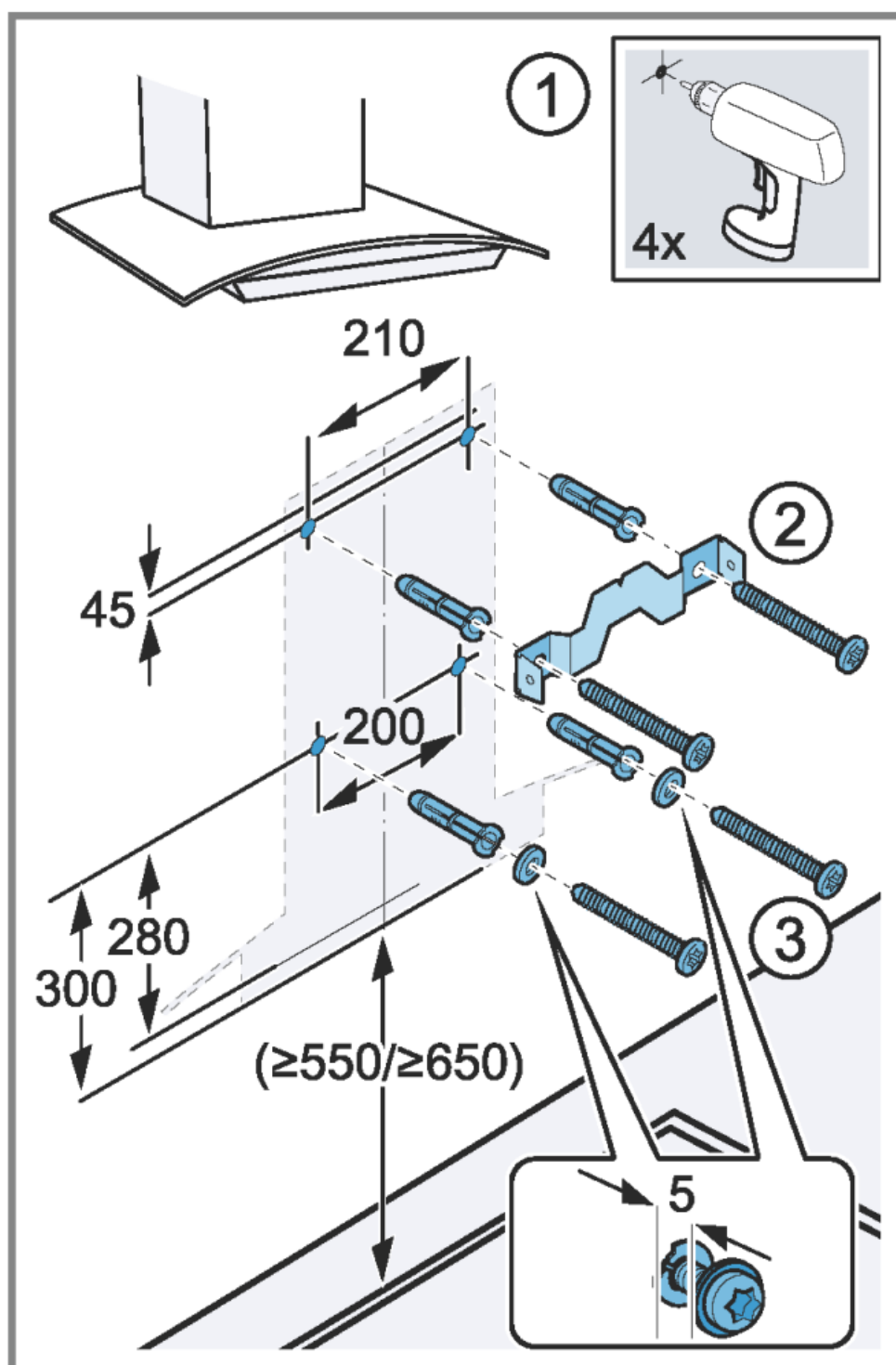
Note: Depending on the design, holes must be placed differently. Before installing, pay attention to the design of the extractor hood.

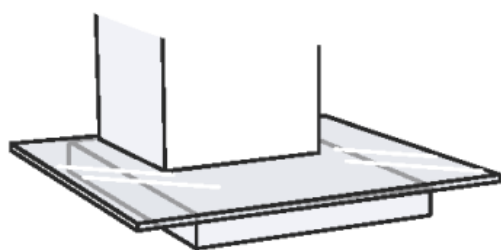
1. Ensure that there are no electrical wires, gas pipes or water pipes in the area where holes are to be drilled.
2. Mark a vertical centre line on the wall from the ceiling to the lower edge of the appliance.
3. Mark the positions for the screws and the contour of the attachment area.
4. Drill 8 mm diameter holes to a depth of 80 mm and press in the wall plugs flush with the wall.
5. Screw on the retaining bracket for the flue duct.
6. Screw in 2 securing screws with washers to approx. 5 mm.



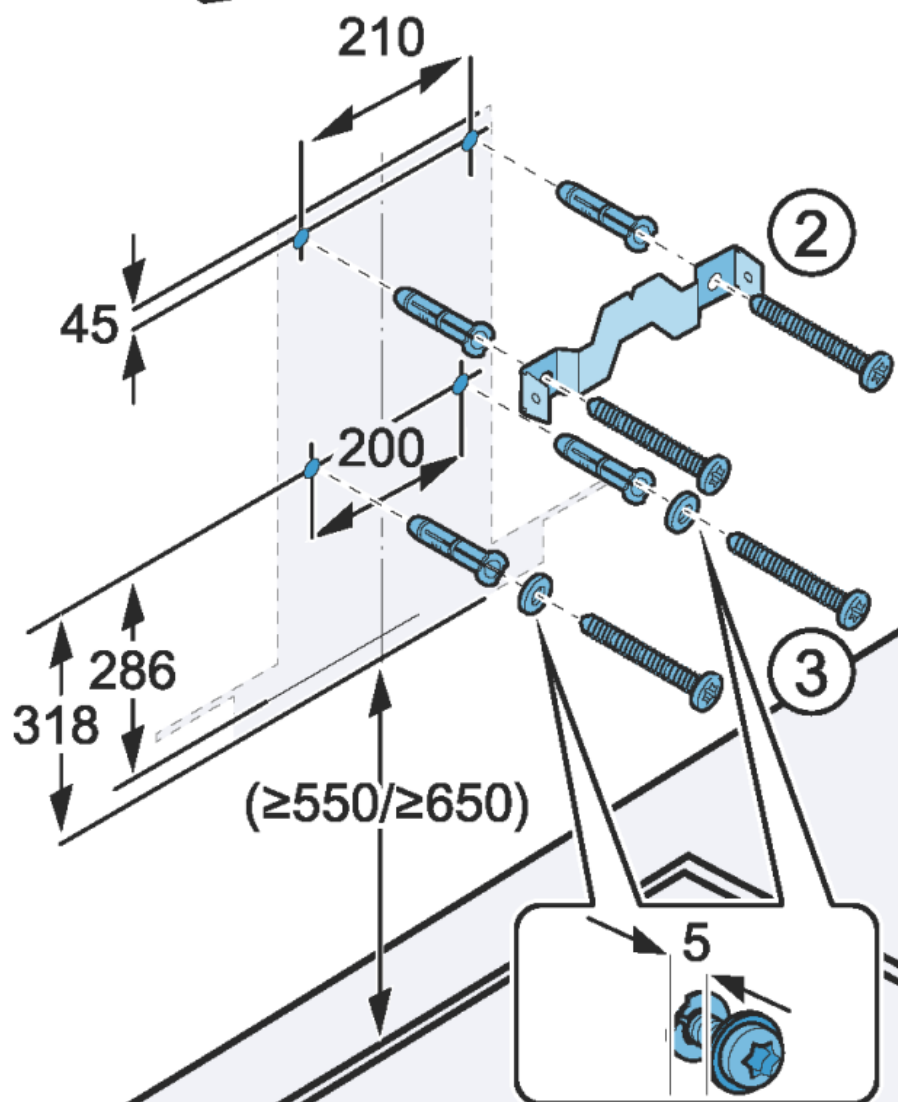
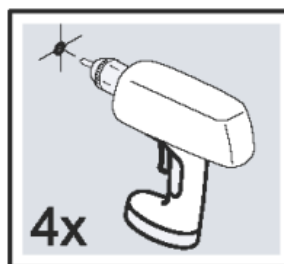
1

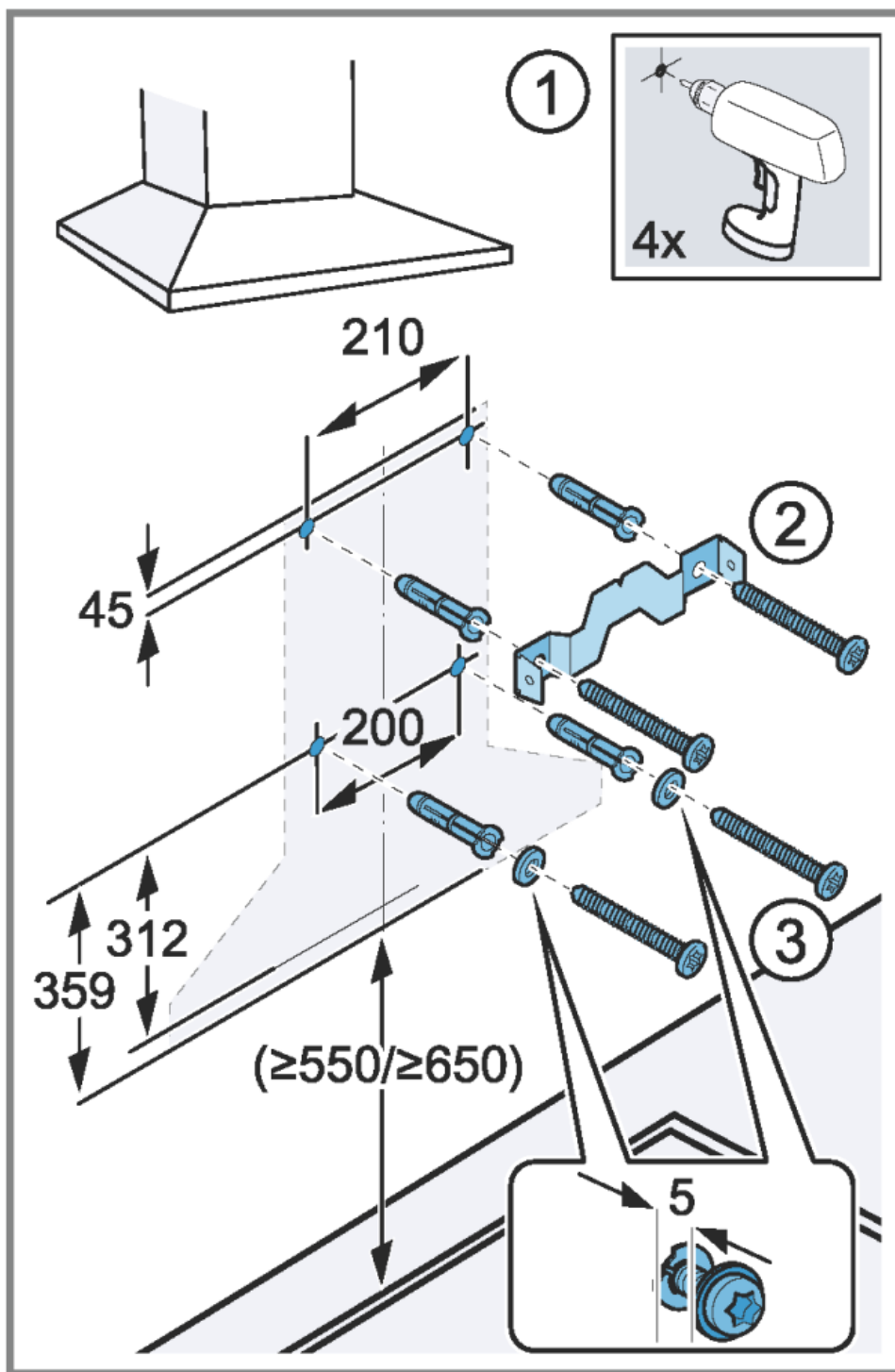






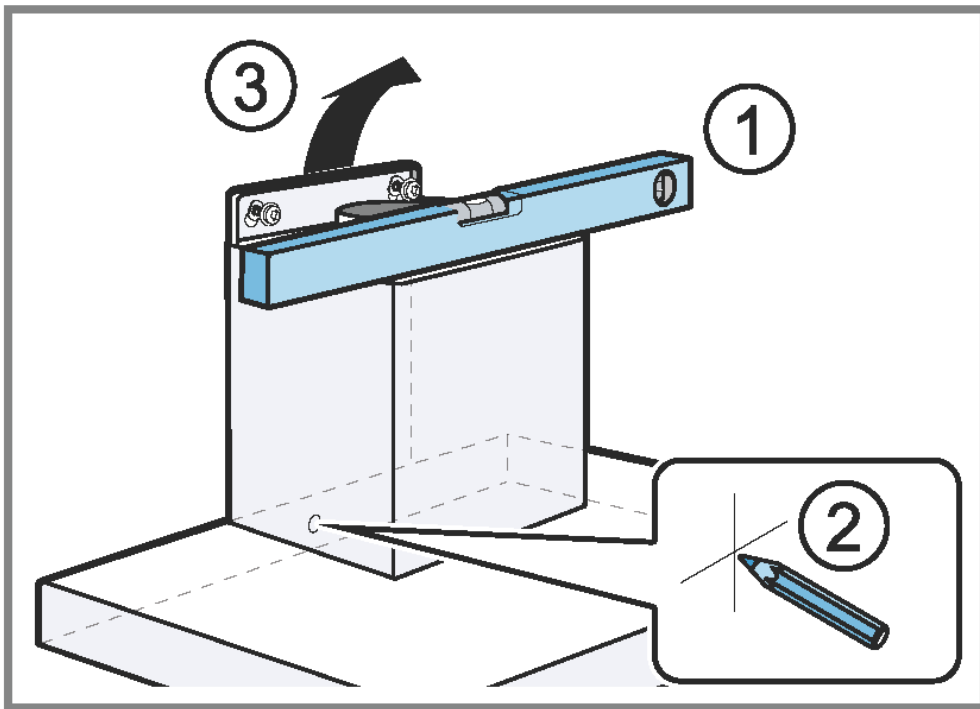
1





Installing the appliance

1. Attach and align the appliance 1.
2. Mark the hole for the safety screw 2.
3. Remove the appliance again 3.

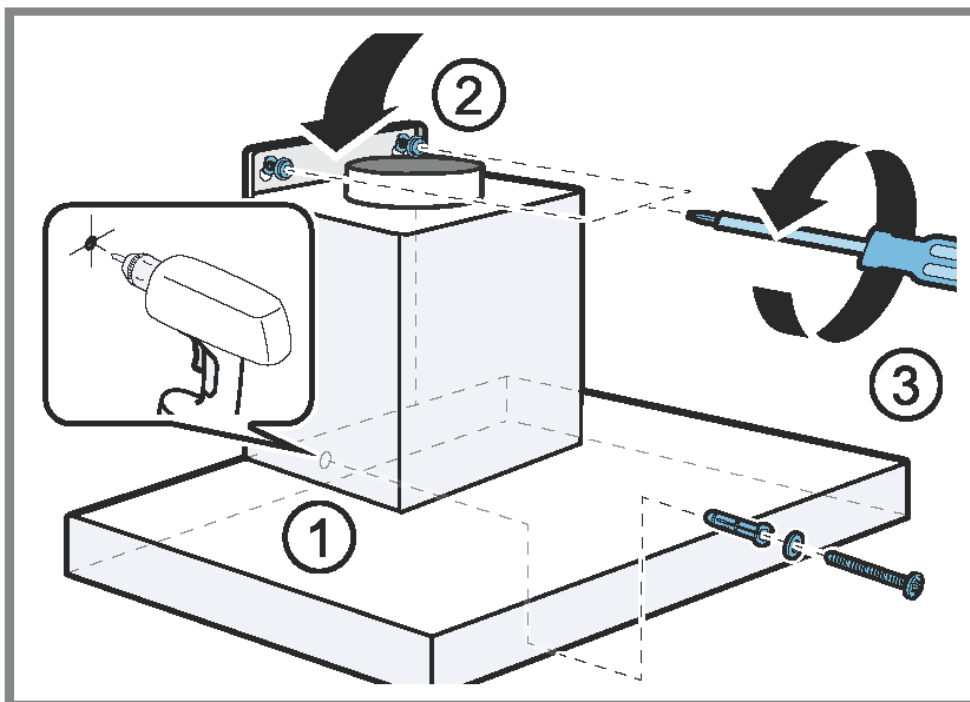


4. Drill an 8 mm diameter hole to a depth of 80 mm for the safety screw and press the wall plug flush into the wall 1.

5. Remove the protective film from the rear.

Once the appliance is installed, fully remove the protective film 2.

6. Attach the appliance.



7. Screw in the safety screw with the washer 2

Piping

Note: If you are using an aluminium pipe, smooth the connection area beforehand.

We recommend the piping with an exhaust air pipe diameter of 150 mm.

Establishing the exhaust air connection (exhaust pipe, 150 mm diameter)

1. Secure the exhaust pipe to the air pipe connector.
2. Establish the connection to the exhaust air opening.
3. Seal the joints.

Establishing the exhaust air connection (exhaust pipe, 120 mm diameter)

1. Secure the reducing connector to the air-pipe connector.
2. Secure the exhaust air pipe to the reducing connector.
3. Seal the joints.

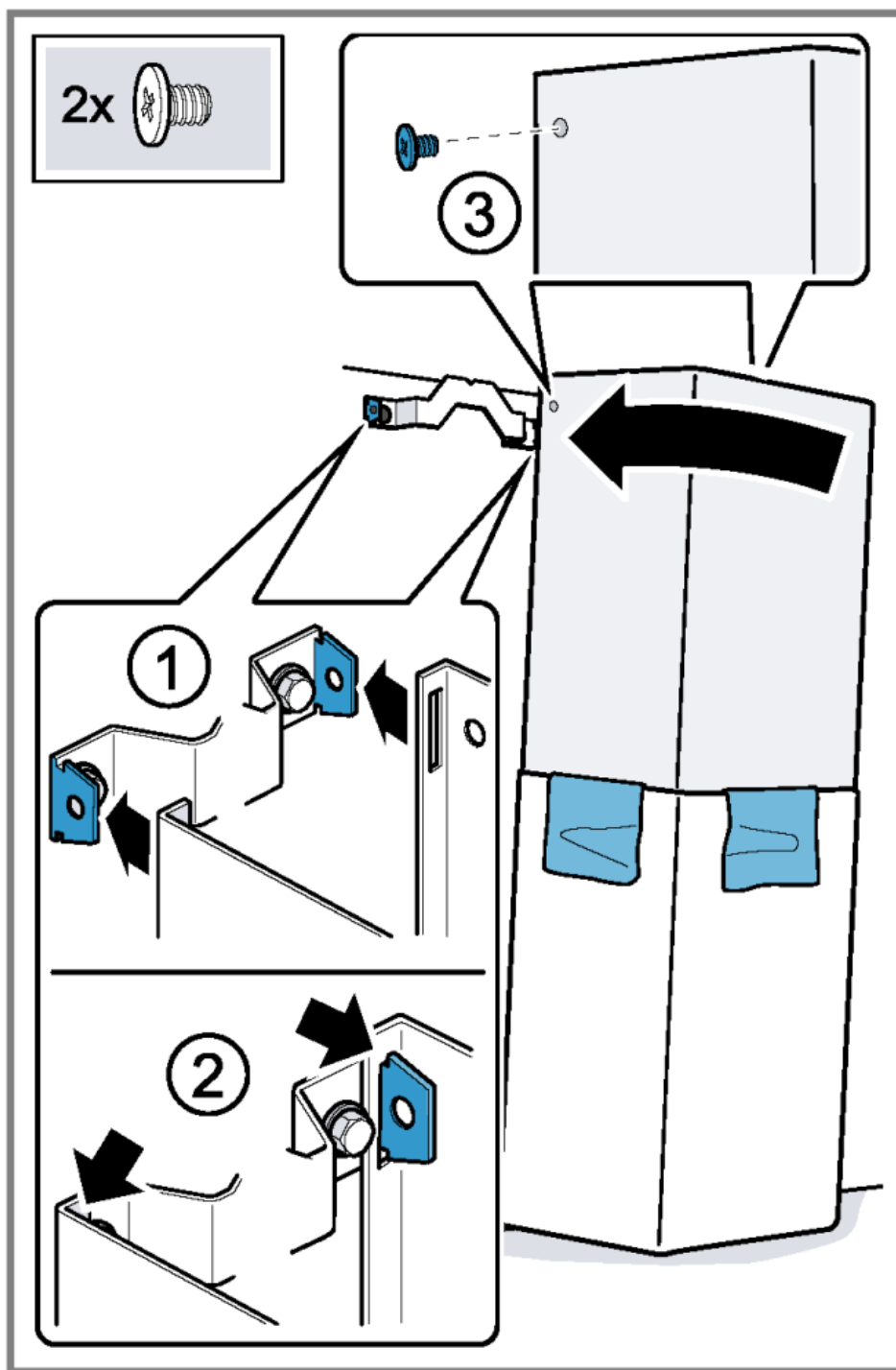
Installing the flue duct

WARNING – Risk of injury!

Components inside the appliance may have sharp edges.

Wear protective gloves.

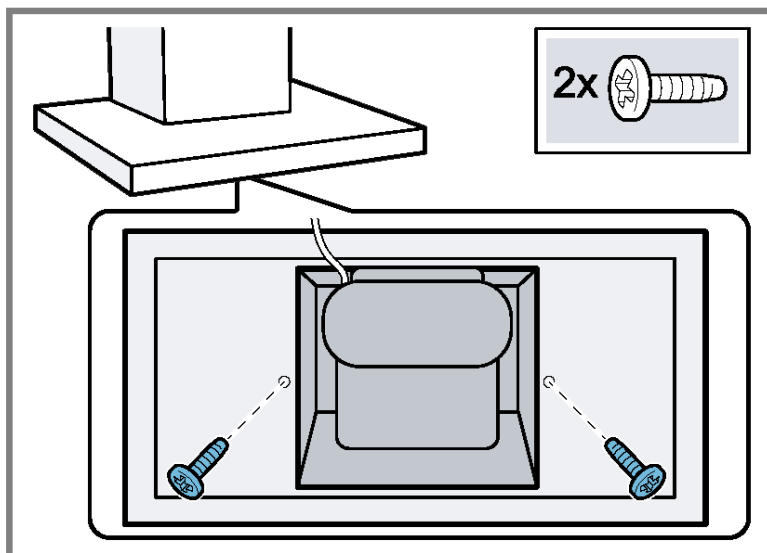
1. Screw the retaining bracket for the flue duct to the wall.
2. To separate the flue ducts, remove the adhesive tape or the flue duct from the protective packaging.
3. Remove any protective foil from both flue ducts.
4. Note: The slots on the flue duct should point downwards.
5. Push one flue duct section into the other.
6. Note: To prevent scratches, lay soft towels over the edges of the outer flue duct to protect the surface.
7. Place the flue duct sections on the appliance.
8. Slide the inner flue duct section upwards, and attach it to the left- and right-hand sides of the retaining bracket.



9. Engage the flue duct section downwards.

10. Screw the flue duct section to the sides of the retaining bracket using two screws.

11. Use two screws to secure the outer flue duct section to the appliance from below.



12. Carefully remove the towels.

Specifications

- Model: CD639650CD636650CD629650 CD626650
- Functions: Extractor hood
- Languages: German, English, French, Dutch

FAQ

Q: Can I use industrial cleaning agents on the aluminum parts of the extractor hood?

A: No, it is recommended to avoid using cleaning agents from commercial or industrial areas on aluminum parts like grease filters to prevent damage.

Q: How should I dispose of the packaging components?

A: Separate the packaging components by type and dispose of them accordingly following local regulations for waste disposal.

Q: What should I do if moisture penetrates the appliance?

A: In case of moisture penetration, disconnect the appliance from the power source immediately and contact customer service for assistance.

Documents / Resources

Constructa

CONSTRUCTA S.p.A.
Via dell'Industria, 1
20090 Segrate (MI)
Tel. +39 02 90 90 90 90
Fax +39 02 90 90 90 91
Email: info@constructa.it
Web: www.constructa.it

[Constructa CD639650 Extractor Hood \[pdf\]](#) User Manual

CD639650, CD636650, CD629650, CD639650 Extractor Hood, CD639650, Extractor Hood, Hood

References

- User Manual

Related Posts



[Electrolux ECG3672AS 36-Inch Gas Rangetop User Manual](#)

ECCG3672AS 36-Inch Gas Rangetop Use & Care
Manual Gas Rangetop EN 2 Guide d'utilisation et
d'entretien Raccordement du...



DE LA ESPADA 392 Coniston Mirror Installation Guide

Installation Guide INSTALLATION INSTRUCTIONS
CONISTON MIRROR BY MATTHEW HILTON These
instructions apply to all Coniston MirrorsPARTS 1x

Mirror...



TESLA RC3400FMX Combi Refrigerators User Manual

RC3400FMX Combi Refrigerators Product Information
Product Name: COMBI FRIDGE FREEZER NO-FROST
Model Number: RC3400FMX Product Manual: User

Manual...

[GCRG3060BD Frigidaire Gallery 30 Inch Gas Range Instruction Manual](#)

JRG3060BD Frigidaire Gallery 30 Inch Gas Range



Frigidaire Gallery 30 Inch Gas Range Product Information Specifications

Brand: Frigidaire Model: A27171402 Manufacturing Date:
August 2023...

CD629650, CD636650, CD639650, CD639650 Extractor Hood, Constructa, Extractor hood,

Constructa Hood

Leave a comment

Your email address will not be published. Required fields are marked *

Comment *

Name

Email

Website

☐ Save my name, email, and website in this browser for the next time I comment.

Post Comment

Search:

Search

This website is an independent publication and is neither affiliated with nor endorsed by any of the trademark owners. The "Bluetooth®" word mark and logos are registered trademarks owned by Bluetooth SIG, Inc. The "Wi-Fi®" word mark and logos are registered trademarks owned by the Wi-Fi Alliance. Any use of these marks on this website does not imply any affiliation with or endorsement.