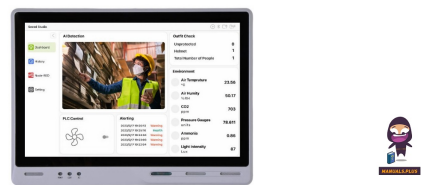


CONRAD reTerminal DM Browser Web Panel



CONRAD reTerminal DM Browser Web Panel Instruction Manual

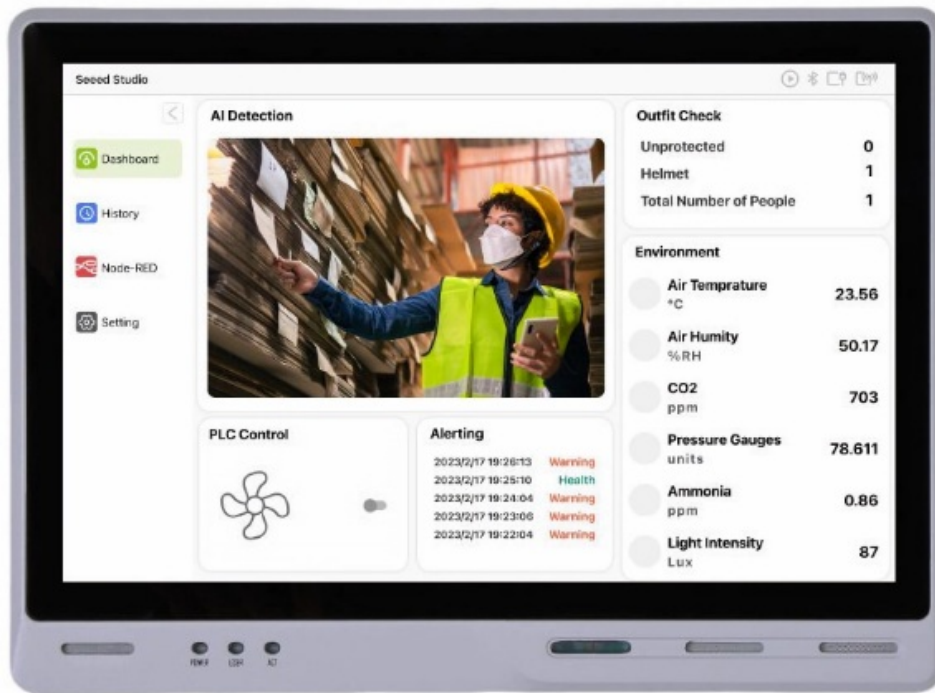
[Home](#) » [CONRAD](#) » CONRAD reTerminal DM Browser Web Panel Instruction Manual 

Contents

- 1 CONRAD reTerminal DM Browser Web Panel
- 2 Operating Instructions for download
- 3 Intended use
- 4 Description of symbols
- 5 Safety instructions
- 6 Disposal
- 7 Technical data
- 8 Documents / Resources
 - 8.1 References
- 9 Related Posts



CONRAD reTerminal DM Browser Web Panel



Reterminal

- Item no: 3124644



Operating Instructions for download

Use the link www.conrad.com/downloads (alternatively scan the QR code) to download the complete operating instructions (or new/current versions if available). Follow the instructions on the web page.

Intended use

The product is intended for indoor use only. Do not use it outdoors. Contact with moisture must be avoided under all circumstances. If you use the product for purposes other than those described, the product may be damaged. Improper use can result in short circuits, fires, or other hazards. The product complies with the statutory national and European requirements. For safety and approval purposes, you must not rebuild and/or modify the product. Read the safety instructions and any accompanying instructions carefully and store them in a safe place. Make this product available to third parties only together with the safety instructions and any accompanying instructions. All company names and product names are trademarks of their respective owners. All rights reserved.

Description of symbols

The following symbols are on the product/appliance or are used in the text:



- The symbol warns of hazards that can lead to personal injury.

Safety instructions

Read this document and the accompanying operating instructions carefully and especially observe the safety information. If you do not follow the safety instructions and information on proper handling, we assume no liability for any resulting personal injury or damage to property. Such cases will invalidate the warranty/guarantee.

General

- The product is not a toy. Keep it out of the reach of children and pets.
- Do not leave packaging material lying around carelessly. This may become dangerous playing material for children.
- If you have questions that remain unanswered by this information product, contact our technical support service or other technical personnel.
- Maintenance, modifications and repairs must only be completed by a technician or an authorized repair center.

Handling

- Handle the product carefully. Jolts, impacts or a fall even from a low height can damage the product.

Operating environment

- Do not place the product under any mechanical stress.
- Protect the appliance from extreme temperatures, strong jolts, flammable gases, steam, and solvents.
- Protect the product from high humidity and moisture.
- Protect the product from direct sunlight.

Operation

- Consult an expert when in doubt about the operation, safety, or connection of the product.
- If it is no longer possible to operate the product safely, take it out of operation and protect it from any accidental use. DO NOT attempt to repair the product yourself. The safe operation can no longer be guaranteed if the product:
 - is visibly damaged,
 - is no longer working properly,
 - has been stored for extended periods in poor ambient conditions or
 - has been subjected to serious transport-related stresses.

Connected devices

- Also, observe the safety and operating instructions of any other devices that are connected to the product.

Battery

- Correct polarity must be observed while inserting the battery.
- The battery should be removed from the device if it is not used for a long time to avoid damage through leaking. Leaking or damaged batteries might cause acid burns when in contact with skin, therefore use suitable protective gloves to handle corrupted batteries.
- Batteries must be kept out of reach of children. Do not leave batteries lying around, as there is a risk, that children or pets swallow them.
- Batteries must not be dismantled, short-circuited, or thrown into fire. Never recharge non-rechargeable batteries. There is a risk of explosion!

Disposal

Product

This symbol must appear on any electrical and electronic equipment placed on the EU market. This symbol indicates that this device should not be disposed of as unsorted municipal waste at the end of its service life. Owners of WEEE (Waste from Electrical and Electronic Equipment) shall dispose of it separately from unsorted municipal waste. Spent batteries and accumulators, which are not enclosed by the WEEE, as well as lamps that can be removed from the WEEE in a non-destructive manner, must be removed by end users from the WEEE in a non-destructive manner before it is handed over to a collection point. Distributors of electrical and electronic equipment are legally obliged to provide free takeback of waste. Conrad provides the following return options free of charge (more details on our website):

- in our Conrad offices
- at the Conrad collection points
- at the collection points of public waste management authorities or the collection points set up by manufacturers or distributors within the meaning of the ElektroG End users are responsible for deleting personal data from the WEEE to be disposed of. It should be noted that different obligations about the return or recycling of WEEE may apply in countries outside of Germany.

(Rechargeable) batteries

Remove batteries/rechargeable batteries, if any, and dispose of them separately from the product. According to the Battery Directive, end users are legally obliged to return all spent batteries/rechargeable batteries; they must not be disposed of in the normal household waste. Batteries/rechargeable batteries containing hazardous substances are labelled with this symbol to indicate that disposal of household waste is forbidden. The abbreviations for heavy metals in batteries are Cd = Cadmium, Hg = Mercury, and Pb = Lead (name on (rechargeable) batteries, e.g. below the trash icon on the left). Used (rechargeable) batteries can be returned to collection points in your municipality, our stores or wherever (rechargeable) batteries are sold. You thus fulfill your statutory obligations and contribute to environmental protection. Batteries/rechargeable batteries that are disposed of should be protected against short circuits and their exposed terminals should be covered completely with insulating tape before disposal. Even empty batteries/rechargeable batteries can contain residual energy that may cause them to swell, burst, catch fire or explode in the event of a short circuit.

Technical data

Power supply

- Input 12 – 24 V/DC
- RTC battery 1x CR2032

Environment

- **Usage environment** Indoor
- **Operating temperature** -10 to +50 °C
- **Operating humidity** 10 – 95 % RH (non-condensing) (at 40 °C)
- **Storage temperature** -20 to +70 °C
- **Storage humidity** <80 % RH (non-condensing)

Others

- **Dimensions (W x H x D) (approx.)** . 259 x 191 x 42 mm
- **Weight (approx.)** 1.8 kg

This is a publication by Conrad Electronic SE, Klaus-Conrad-Str. 1, D-92240 Hirschau (www.conrad.com).All rights including translation reserved. Reproduction by any method (e.g. photocopying, microfilming, or the capture in electronic data processing systems) requires prior written approval from the editor. Reprinting, also in part, is prohibited. This publication reflects the technical status at the time of printing. Copyright by Conrad Electronic SE.
*3124644_V1_0624_jh_ss_en 1398760075-2 I1/O1 en

Documents / Resources



[CONRAD reTerminal DM Browser Web Panel](#) [pdf] Instruction Manual
reTerminal, reTerminal DM Browser Web Panel, DM Browser Web Panel, Browser Web Panel, Web Panel, Panel

References

- [User Manual](#)

[Manuals+](#), [Privacy Policy](#)

This website is an independent publication and is neither affiliated with nor endorsed by any of the trademark owners. The "Bluetooth®" word mark and logos are registered trademarks owned by Bluetooth SIG, Inc. The "Wi-Fi®" word mark and logos are registered trademarks owned by the Wi-Fi Alliance. Any use of these marks on this website does not imply any affiliation with or endorsement.