



connex CONNECT S2004 Smart Wi-Fi Window and Door Sensor User Manual

[Home](#) » [connex CONNECT](#) » connex CONNECT S2004 Smart Wi-Fi Window and Door Sensor User Manual 

Contents

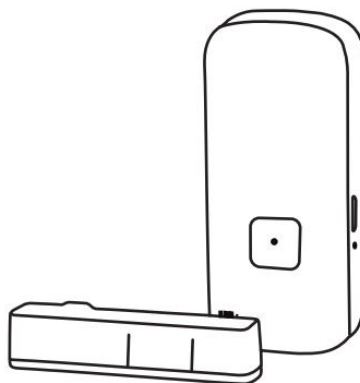
- [1 connex CONNECT S2004 Smart Wi-Fi Window and Door Sensor](#)
- [2 What's in the Box](#)
- [3 CONNECTION](#)
- [4 Easy Mode Connection](#)
- [5 Specifications](#)
- [6 FAQ's](#)
- [7 Cleaning & Care Instructions](#)
- [8 Warranty](#)
- [9 Documents / Resources](#)
 - [9.1 References](#)
- [10 Related Posts](#)



connex CONNECT S2004 Smart Wi-Fi Window and Door Sensor



What's in the Box



- Smart Wi-Fi Window / Door Sensor
- 500mAh Lion Battery 1 year operation with 10 activations/day
- Adhesive Tape
- User Manual
- Voice Assistant Guide

Requirements

- Make sure you are connecting to a 2.4 GHz Wi-Fi network.
- Connex Connect won't work on a 5 GHz Wi-Fi network.
- Have your Wi-Fi network name and password ready.
- Make sure your mobile device is running iOS® 8 or higher or Android TM 4.1 or higher.

Download the Connex Connect App from Google Play or iOS store.

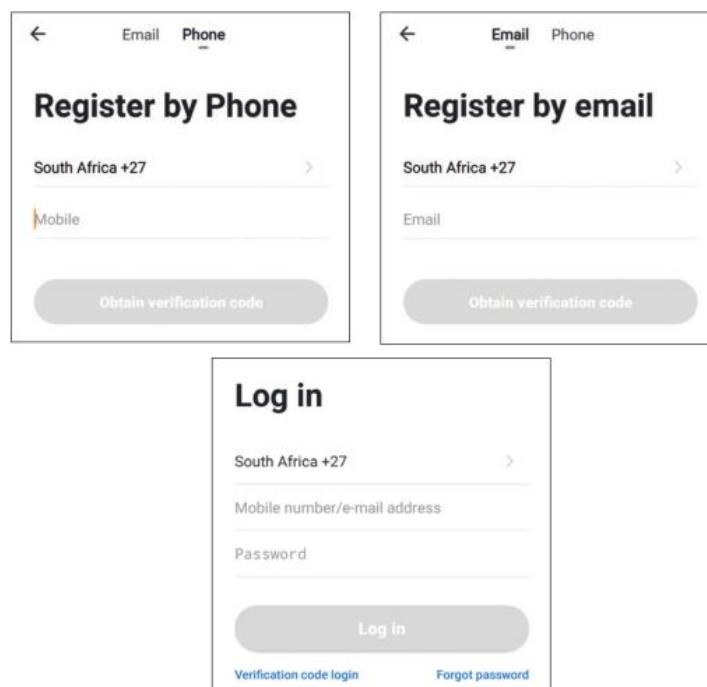
Step 1



CONNECTION

Register an Account on the Connex Connect App

Step 2



Plug In and Connect

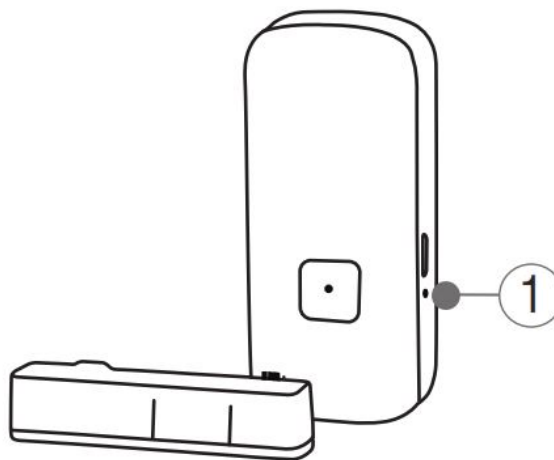
Step 3 : Insert supplied batteries into the switch to power on. (The switch LED will flash repeatedly, 2 x per second: Easy Mode)

How to Reset the Device

- Reset the switch by pressing and holding the button for 6 seconds until the indicator light flashes rapidly. You will then be in "Easy Mode", fast blinking light, 2 x per second.
- Reset again pressing and holding the button for 6 seconds until the indicator light flashes slowly. You will then be in "AP Mode", which is the back-up mode of connection, slowly flashing once every 3 seconds.

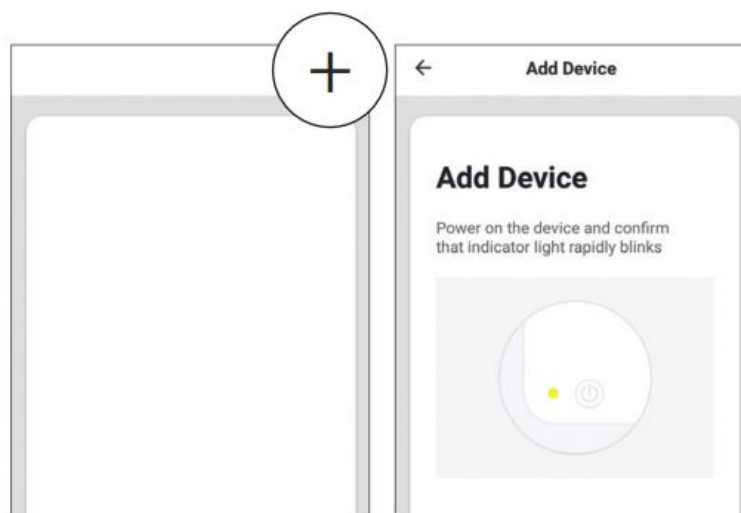


- **Reset**

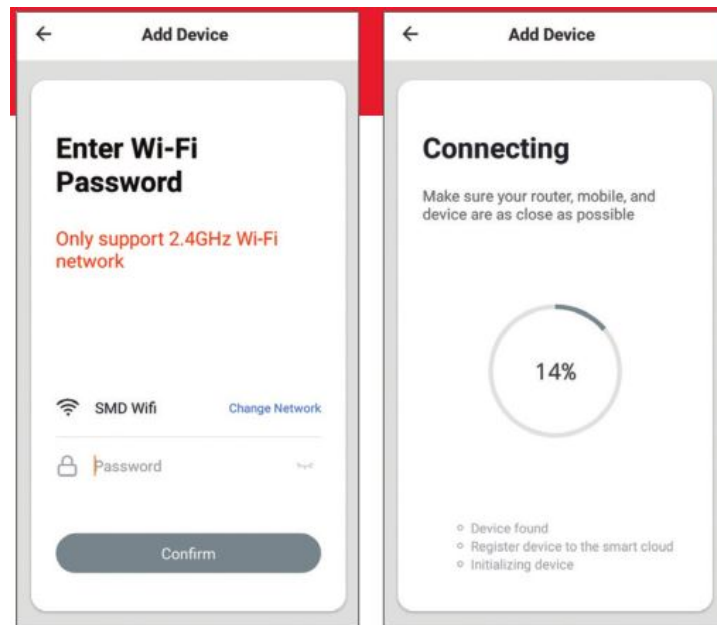


Easy Mode Connection

Step 4



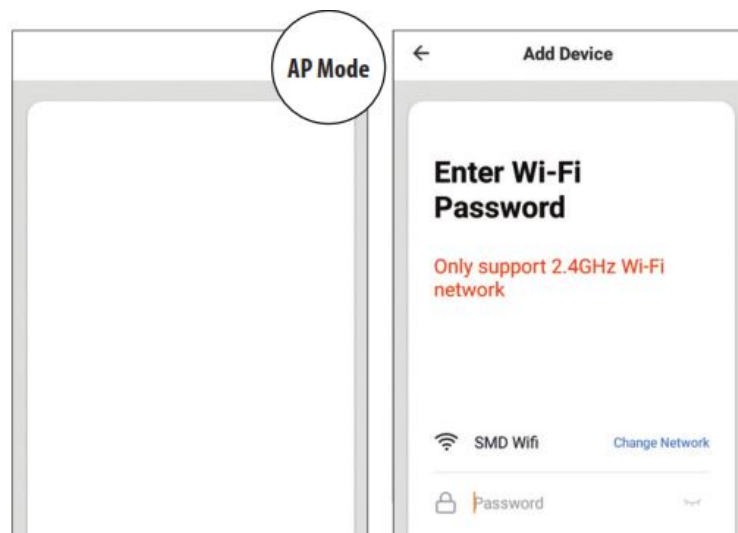
- In the Connex Connect App top right corner of the device screen, click “+”.
- Make sure the LED is flashing rapidly indicating “ready to connect”.



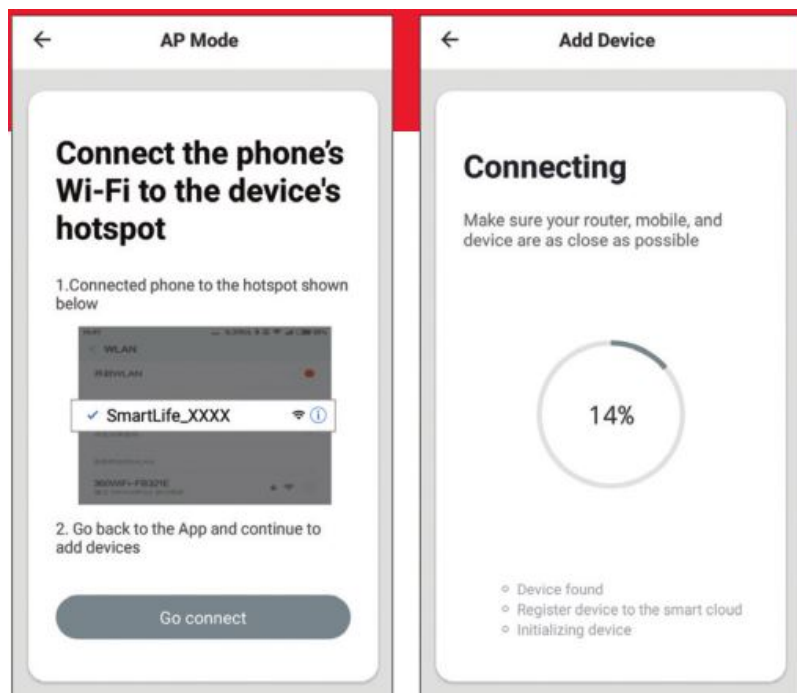
- Enter your Wi-Fi network and password.
- The Connex Connect App will connect to your device. If the connection fails, then try connecting using the AP Mode.

AP Mode Connection

Step 5



- In the Connex Connect App top right corner of the device screen, click "+". Select "AP Mode" in top corner.
- Select "next" and enter your Wi-Fi and password details.



- Follow the instructions to choose the device from your Wi-Fi list.
- The Connex Connect App will connect to your device.

Specifications

- **App:** Connex Connect
- **Sensor Dimensions:** 72 x 32 x 25 mm
- **Battery:** 500 mAh
- **Technology:** LED & Wi-Fi
- **Connectivity:** Wi-Fi 802.11bgn 2.4 GHz (Wi-Fi 4)
- **Wireless Range:** 45 M
- **Voltage In:** 3 V
- **Maximum Current:** 120 mA
- **Stand-by Current:** 13 μ A

FAQ's

1. How many devices can I control?

Connex Connect App can control unlimited number of devices and locations. Your router has a limit as to how many devices can connect to it.

2. How do I group multiple Connex Connect devices?

You can group multiple similar devices together by room or by location. The same device can form part of multiple groups. From the Connex Connect App main screen, select the device you want to group. Select edit in top right corner. Then select "Create Group". You can then select devices which you would like to group and will be able to rename them.

3. How do I share devices with family and friends?

You can share devices by selecting the "Me" icon → Home Management → Add Family. In order to share a family member needs to have downloaded the Connex Connect App and registered.

4. What is the wireless range?

The range of your Wi-Fi is dependent on your home router specifications and the strength of your Wi-Fi signal.

5. Why does the sensor appear off-line?

1. Ensure the sensor is powered ON.
2. Make sure your Wi-Fi router is on and in range (your Connex Connect Smart device requires a Wi-Fi signal to function correctly).

6. Why can't I connect to my Wi-Fi?

1. Ensure your device and your mobile are on the same home network.
2. Make sure you entered the correct Wi-Fi password during set-up.
3. Ensure your Wi-Fi signal strength extends to your device location.

System Requirements

- Mobile device running iOS® 8 or higher or Android TM 4.1 or higher.
- An existing 2.4 GHz Wi-Fi network.

CE Certification

This device complies with CE Radio Equipment Directive [RED] 2014/53/ EU & Restriction of Hazardous RoHS Directive 2011/65/EU. Operation is subject to the following two conditions:

1. This device may not cause harmful interference, and
2. This device must accept any interference received, including interference that may cause undesired operation.

Important Information

Before using the sensor, please read and follow all instructions, including the following.

CAUTION: Risk of electric shock or burns and use in a dry location only.

Do not install the device with wet hands or when standing on a wet or damp surface. Suitable for use in an operating environment between -20 °C and 40 °C (-4 °F and 104 °F).



Cleaning & Care Instructions

- Before Cleaning: Ensure that your Connex Connect sensor is powered off before cleaning or maintaining it.
- Cleaning: Wipe down the surface of your Connex Connect sensor using a soft, slightly damp cloth.
- Do not use any harsh or abrasive cleaning chemicals or materials on your Connex Connect sensor as doing so may damage or scratch the surface finish.
- Do not expose your Connex Connect sensor to high temperatures for extended periods of time.
- Do not store in temperatures over 60 °C / 140 °F.

Environmentally Friendly Disposal



Do not dispose of electrical appliances as unsorted municipal waste, use separate collection

facilities. Contact your local government for information regarding the collection systems available. If electrical appliances are disposed of in landfills or dumps, hazardous substances can leak into the groundwater and get into the food chain, damaging your health and well-being.

Support

Please visit us at www.connexconnect.com for answers to common issues and to see the full selection of products. If you still have any queries contact us at info@connexconnect.com

The illustrated product and specifications may differ slightly from those supplied. Connex is a trademark of SMD Technologies (Pty) Ltd. iPhone, Apple and the Apple logo are trademarks of Apple Inc., registered in the U.S. and other countries. App Store is a service mark of Apple Inc. Android Google Assistant, Google Play, and the Google Play logo are trademarks of Google Inc. Google is a trademark of Google LLC. iOS is a registered trademark of Cisco in the U.S. and other countries and is used under license. Amazon, Alexa and all related logos are trademarks of Amazon.com, Inc or its affiliates. All other trademarks and trade names are those of their respective owners.

©2021 Connex Connect (Pty) Ltd 23 Nguni Drive, Long Meadow Business Estate West, Modderfontien, Johannesburg, South Africa, 1609.

Warranty

This Connex Connect Smart Wi-Fi Motion Sensor includes a standard 12-month limited warranty against manufacturing defects and faults. Should your product be unboxed with any faulty parts, poor finishing or visible damage, or fail to perform due to a manufacturing defect or poor workmanship, please return it with your proof of purchase (till slip or invoice) to the store of purchase for an exchange, or repair, depending on the store's returns policy.

This warranty commences from the date of purchase. Kindly retain your proof of purchase as well as the packaging for your warranty period.

NOTE: The Warranty does not apply to a Product that:


1. Has failed due to excessive wear and tear beyond what is considered to be reasonable.
2. Has been misused or neglected.
3. Has been damaged accidentally or by Force Majeure including fire and flooding.
4. Has been used or operated contrary to operating or maintenance instructions outlined in this manual.

The Store of Purchase / Seller cannot accept any returned products that have not been returned in accordance to this warranty or which does not follow their own Returns Policy. Please refer to the Store of Purchase / Sellers Returns Policy for details. Should you require any further assistance or have any questions on your warranty, please contact the store of purchase.


Connex Connect Support:

Visit us at www.connexconnect.com for answers to common issues and to see the full selection of products. If you still have any queries contact us at info@connexconnect.com

Documents / Resources

	<p>connex CONNECT S2004 Smart Wi-Fi Window and Door Sensor [pdf] User Manual S2004, Smart Wi-Fi Window and Door Sensor, S2004 Smart Wi-Fi Window and Door Sensor</p>
---	--

References

-  [Amazon.com. Spend less. Smile more.](#)
-  [Control at your Finger Tips - Connex Connect](#)

Manuals+.