



# CONNECOM Walkie Talkie Communication Setting User Guide

[Home](#) » [CONNECOM](#) » CONNECOM Walkie Talkie Communication Setting User Guide 

**CONNECOM and other brand walkie talkie users realize  
communication setting**

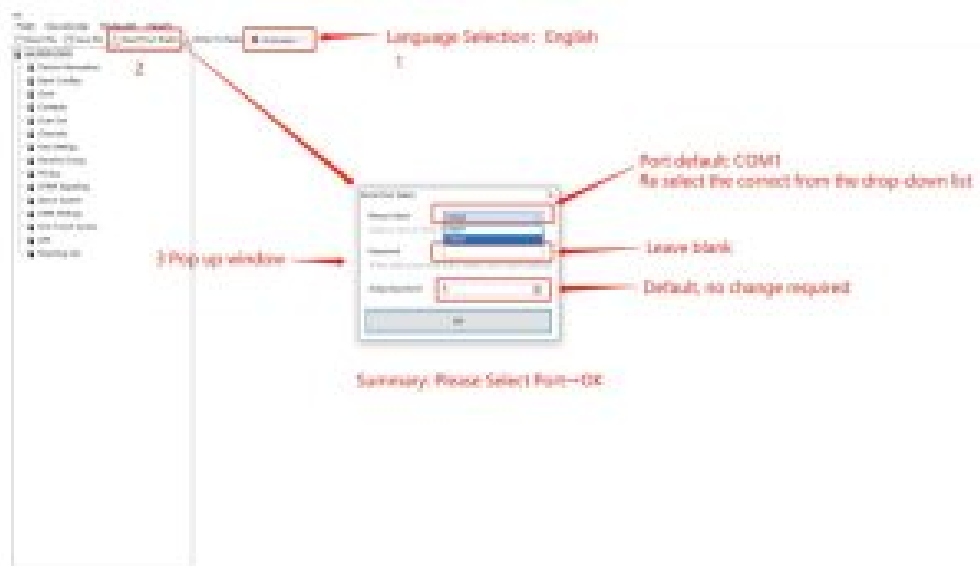
## Contents

- [1 Preparation before programming:](#)
- [2 Start Program](#)
- [3 Edit channel](#)
- [4 Documents / Resources](#)
- [5 Related Posts](#)

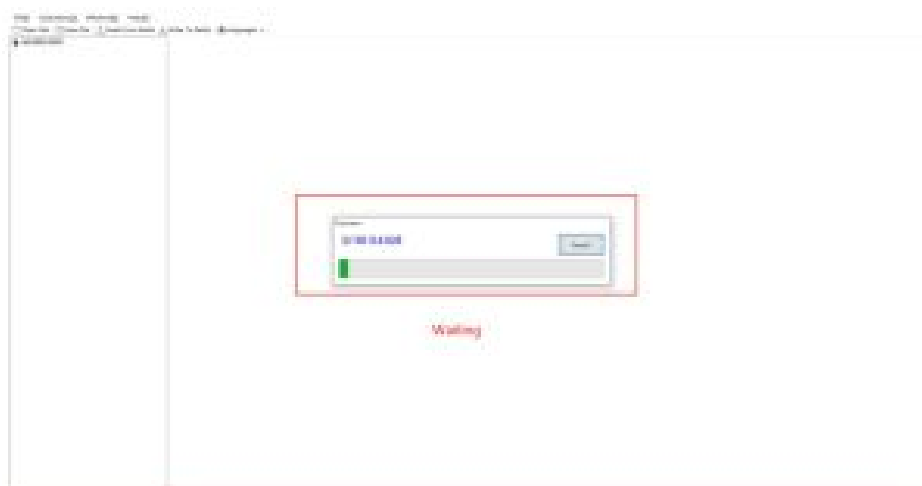
## Preparation before programming:

- <1>The driver is already installed on this computer
- <2>Install CONNECOM brand CPS software(Contact customer service for software)
- <3>The walkie talkie is turned on and the GD900 USB programming cable is connected to the correct port
- <4>Before starting to modify, first obtain the frequency table of different brands of walkie-talkies, whether to turn on or off CTCSS
- <5>Acquisition method of CONNECOM CPS software: enter the official website → Download  
<http://www.hqjmtech.com/>

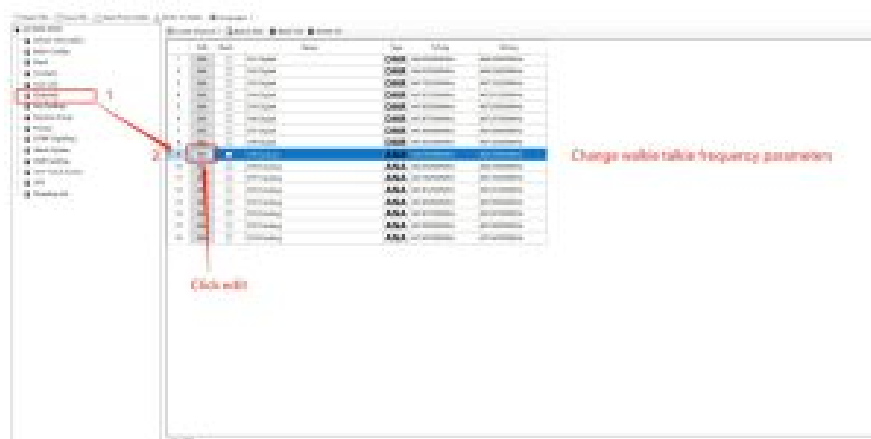
## Start Program



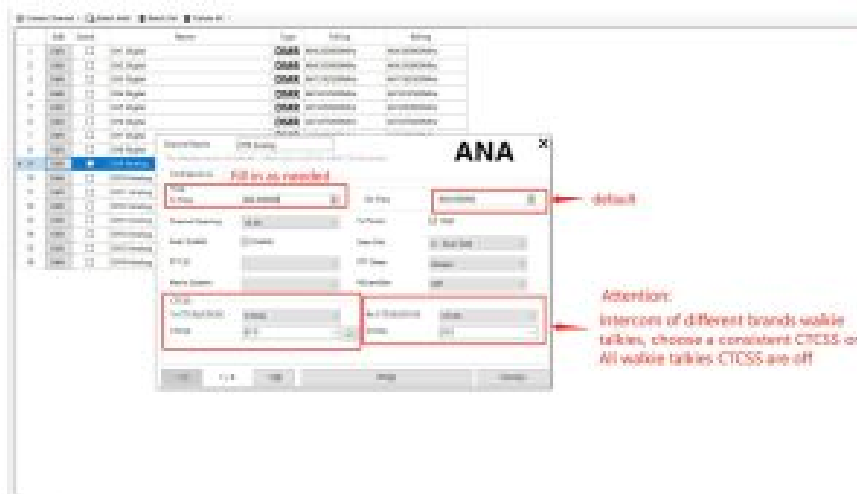
Wait for the program to



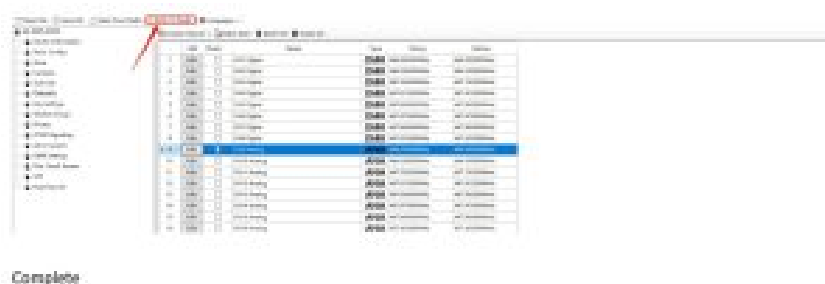
Edit channel



Next,



Save the modified parameters and then select the “write to radio” button, as shown in the figure below



## Documents / Resources

**[CONNECOM Walkie Talkie Communication Setting \[pdf\] User Guide](#)**  
 Walkie Talkie, Communication Setting, Walkie Talkie Communication Setting