



## CONLAN 480390 WAVE XS Touchless Button User Manual

[Home](#) » [CONLAN](#) » CONLAN 480390 WAVE XS Touchless Button User Manual 

# CONLAN

A SALTO GROUP COMPANY  
]480390 WAVE XS Touchless Button  
User Manual



## USER MANUAL: WAVE XS

### Contents

- [1 480390 WAVE XS Touchless Button](#)
- [2 INTRODUCTION](#)
- [3 INSTALLATION](#)
- [4 CONFIGURATION](#)
- [5 ACTIVATION TIME AND DETECTION RANGE](#)
- [6 Documents / Resources](#)
  - [6.1 References](#)

## 480390 WAVE XS Touchless Button

### WAVE XS by CONLAN

WAVE XS is a touchless button, securing high hygiene. The WAVE XS can be installed and used for many different purposes, e.g. to open a door, turn on the light, or call for an elevator – just a few among many other options.

Art.no. 480390 – WAVE XS, Danish, black

Art.no. 480391 – WAVE XS, Danish, white

Art.no. 480490 – WAVE XS European, black

Art.no. 480491 – WAVE XS European, white



Publications of CONLAN ApS are protected by copyright and all rights are reserved.

CONLAN publications may not be reproduced in any form or by any means without written permission from the copyright owner.

## INTRODUCTION

The WAVE XS can be used for many different applications. The WAVE XS has a double color status light ring (default is red and green), as well as an adjustable detection range and activation time. With this you also have the opportunity of choosing between different texts and icons to be shown on the display.

WAVE XS is touchless and is therefore suitable in especially public areas such as hospitals or restaurants where the hygiene is extremely important.

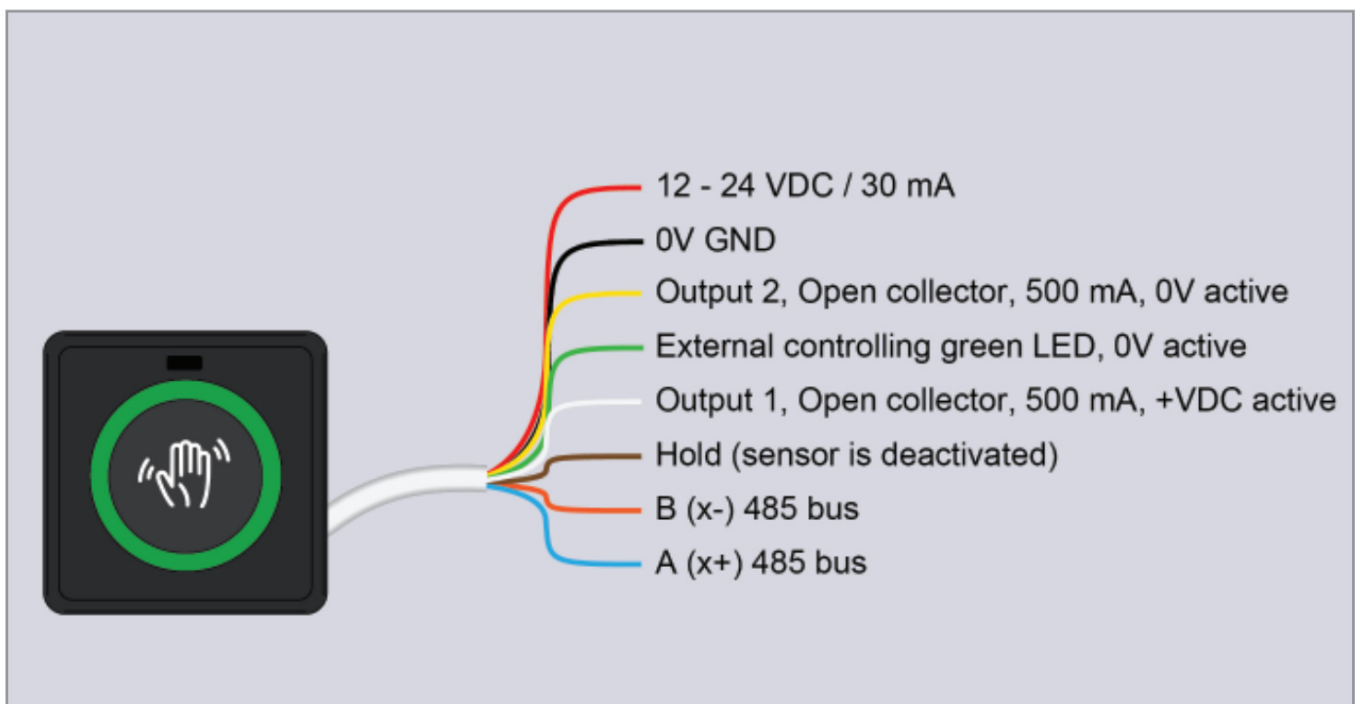
## INSTALLATION

Before proceeding with the installation, please note that that time, distance and display are configured via the dip switches on the back. The configuration should therefore happen before installation.

- Mount WAVE XS on an even surface and with the delivered mounting frame. It is important that you use the mounting base to avoid potential damage on the display.
- Connect the wires to the power supply, lock unit, assembly box etc.
- Apply voltage 12 VDC, max. 24 VDC.

### NOTE:

Please make sure that you use the very same power supply unit when you connect the WAVE XS to another controller (i.e. SALTO door controller – CU -).

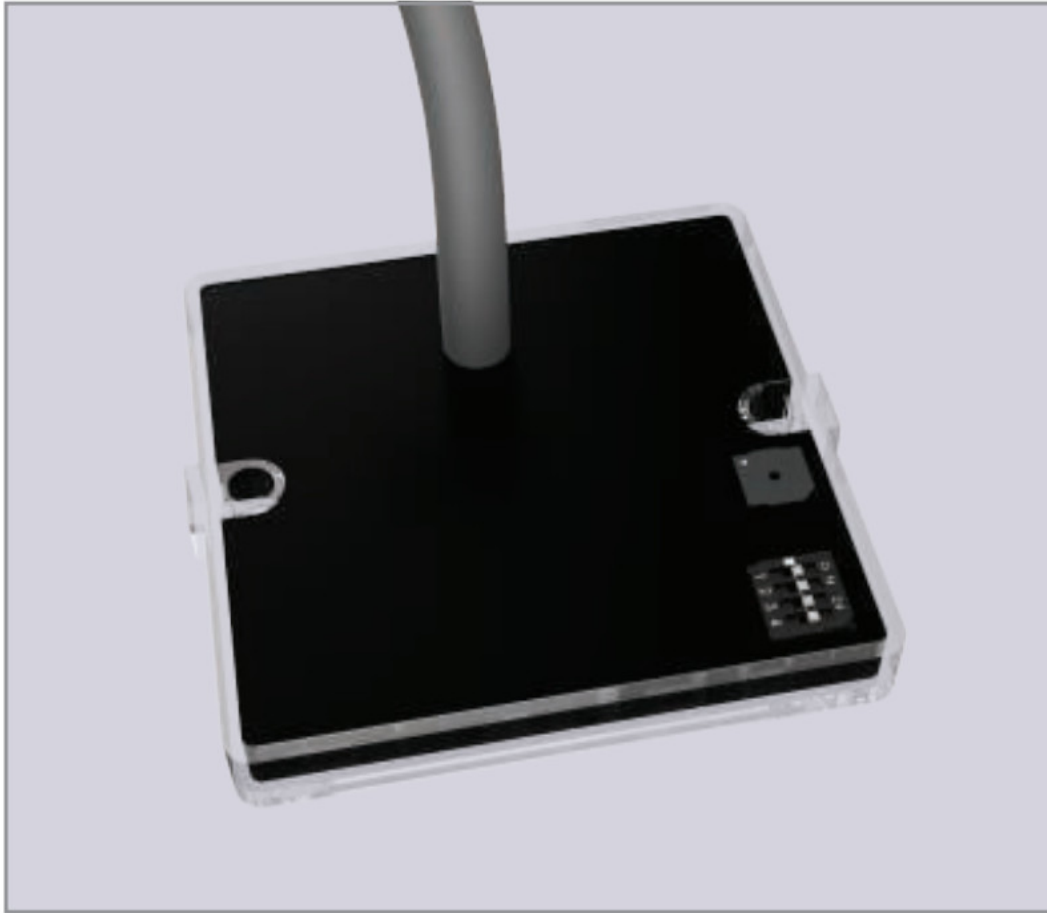


Also make sure that there is no object (protection stickers included) or any obstacles within 30 cm of the front panel to avoid any interference.

## CONFIGURATION

WAVE XS has 4 different dip switches that are used for configuration. The switches are placed on the right button of the back.

Through these switches it is possible to configurate time and detection range, as well as text and icons to be shown on the display.



**NOTE:**

The power must be switched off before configuration of the dip switches.

After setting the dip switches, turn the power back on.

In the table below, you can see how to set the switches to achieve the desired configuration.

DIP 1	DIP 2	DIP 3	DIP 4		LANGUAGE	TEXT	ICON
on	on	on	on		English	EXIT	
off	on	on	on		German	AUSGANG	
on	off	on	on		Spanish	SALIDA	
off	off	on	on		Danish	UD	
on	on	off	on		Norwegian	UT	
off	on	off	on		French	SORTIE	
on	off	off	on		Italian	USCITA	
off	off	off	on		Basque	IRTEN	
on	on	on	off				Nothing
off	on	on	off				Lock
on	off	on	off				Hand
off	off	on	off				Arrow up
on	on	off	off				Arrow down
off	on	off	off				Door
on	off	off	off				Picture*
off	off	off	off	On-site programming of time and distance			

- PC-software is required to upload a icon or picture of your own choosing.

## ACTIVATION TIME AND DETECTION RANGE

By setting all the dip switches to “off”, the configuration of activation time and detection range will start. Do this configuration before setting the dip switches to show your wanted text or icon.

After setting the dip switches to “off” and turning the power back on, use your hand to set the activation time and detection range by moving your hand further away from or closer to the WAVE XS. The display shows the setting. When the display shows the wanted activation time and detection range, hold your hand still for a few seconds, until the WAVE XS is configured.

Time can be set to 3, 5, 10, 15, or 20 seconds or to toggle mode.

Detection range can be set to between 1-25 cm.

### ICON AND TEXT

As shown in the table on the previous page WAVE XS has different text and icon options to be shown on the display. How to set the dip switches to achieve the wanted text or icon is also shown in the table.

The text “EXIT” can be shown in 8 different language options, and there are 6 different icon options.

The available icons are: A dynamic lock, hand, arrow up, arrow down, and a door.

# CONLAN

[www.conlan.eu](http://www.conlan.eu)



**[CONLAN 480390 WAVE XS Touchless Button](#)** [pdf] User Manual  
480390, 480391, 480490, 480491, 480390 WAVE XS Touchless Button, WAVE XS Touchless Button, Touchless Button

## References

- [C Digital Access Control Solutions - Conlan Access Security Systems](#)