



Conchstar ML-6200 60 Minute Visual Timer for Kids Instructions

[Home](#) » [Conchstar](#) » Conchstar ML-6200 60 Minute Visual Timer for Kids Instructions 

Contents

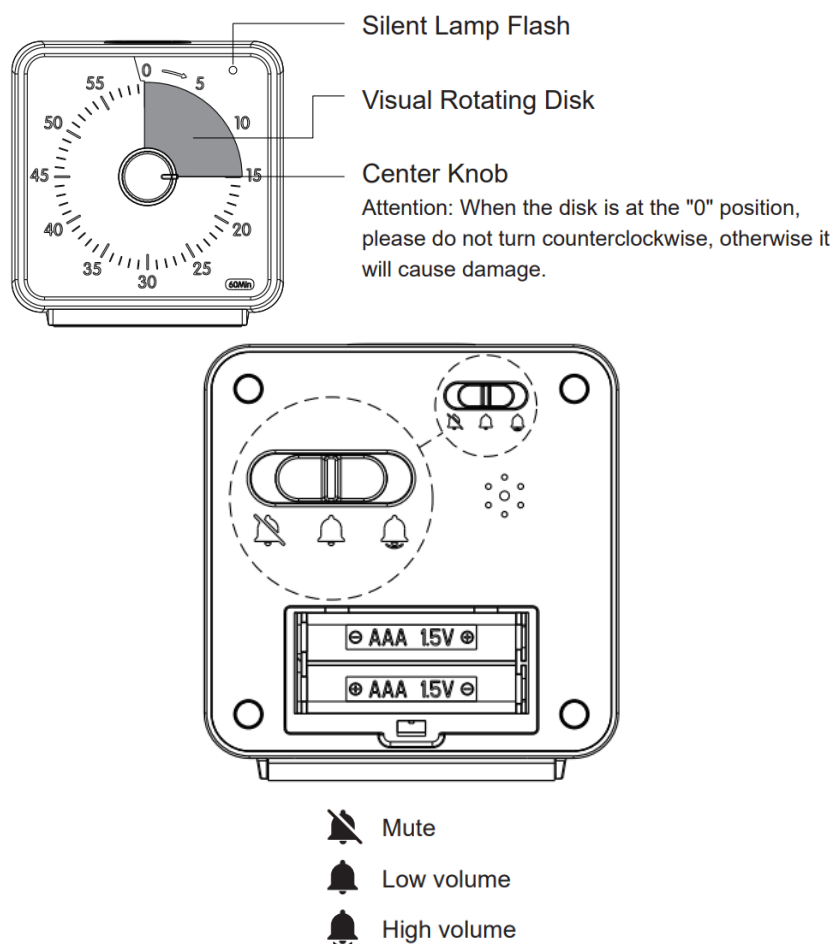
- [1 Conchstar ML-6200 60 Minute Visual Timer for Kids](#)
- [2 Alarm volume setting](#)
- [3 Alarm volume setting](#)
- [4 How to use it?](#)
- [5 Correct Disposal of this product](#)
- [6 Documents / Resources](#)
 - [6.1 References](#)
- [7 Related Posts](#)

ConchStar

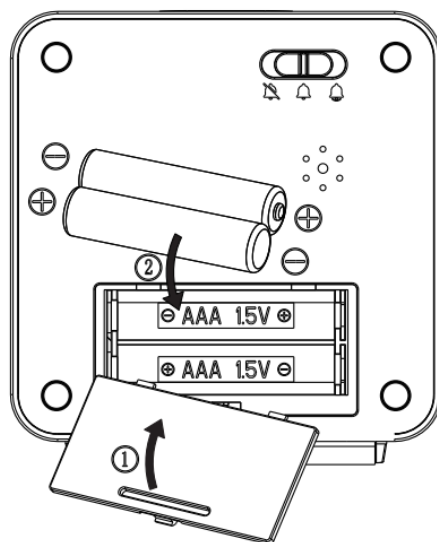
Conchstar ML-6200 60 Minute Visual Timer for Kids



Alarm volume setting



How to install the battery?



Tips: Please install batteries by an adult

1. Use 2 x AAA batteries.
2. Open the battery cover in the direction of the arrow, check the “+/-” poles of the batteries and place them in the battery compartment accordingly.

Alarm volume setting

How to install the battery?

Tips: Please install batteries by an adult

1. use 2 x AAA batteries.
2. Open the battery cover in the direction of the arrow, check the “+/-” poles of the batteries and place them in the battery compartment accordingly.

Attention

1. When there is an abnormal sound of “da, da, da”, please replace the battery, and the timer in low power status.
2. When not in use for a long time, please remove the battery to prevent leakage which may cause corrosion of the device.

How to use it?



Example

Setting an alarm to alert you after 15 minute

Method

1. Turn the centre knob clockwise.
2. Turn to the “15” position.

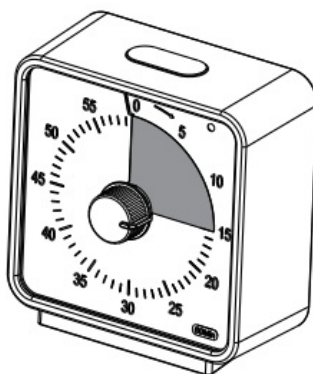
Attention



1. Rotating counterclockwise past the “0” position will cause damage.
2. When the time you need to set is less than 1 minute, you need to turn it to more than 3 minutes and then back to 1 minute, otherwise, the timer will not activate.

How to turn off the alarm?


Turn the centre knob clockwise and reset it to zero, press the top button to stop the alarm sound.



Correct Disposal of this product

This marking indicates that this product should not be disposed of with other household wastes throughout the EU. To prevent possible harm to the environment or human health from uncontrolled waste disposal, recycle it responsibly to promote the sustainable reuse of material resources. To return your used device, please use the return and collection systems or contact the retailer where the product was purchased. They can take this product for environmentally safe recycling.

Documents / Resources

	<p>Conchstar ML-6200 60 Minute Visual Timer for Kids [pdf] Instructions ML-6200 60 Minute Visual Timer for Kids, ML-6200, 60 Minute Visual Timer for Kids, Minute Visual Timer for Kids, Visual Timer for Kids, Timer for Kids</p>
---	--

References

- [User Manual](#)

[Manuals+](#), [Privacy Policy](#)

This website is an independent publication and is neither affiliated with nor endorsed by any of the trademark owners. The "Bluetooth®" word mark and logos are registered trademarks owned by Bluetooth SIG, Inc. The "Wi-Fi®" word mark and logos are registered trademarks owned by the Wi-Fi Alliance. Any use of these marks on this website does not imply any affiliation with or endorsement.