

CONCEPTRONIC LORCAN04B 4 Button Dual Mode Wireless Mouse



CONCEPTRONIC LORCAN04B 4 Button Dual Mode Wireless Mouse Installation Guide

[Home](#) » [CONCEPTRONIC](#) » CONCEPTRONIC LORCAN04B 4 Button Dual Mode Wireless Mouse Installation Guide 

Contents

- [1 CONCEPTRONIC LORCAN04B 4 Button Dual Mode Wireless Mouse](#)
- [2 Product Usage Instructions](#)
- [3 FAQ](#)
- [4 PACKAGE CONTENTS](#)
- [5 MOUSE BUTTON](#)
- [6 INSTALLATION](#)
- [7 SPECIFICATION](#)
- [8 Installation and usage](#)
- [9 CONTACT](#)
- [10 Documents / Resources](#)
 - [10.1 References](#)



CONCEPTRONIC LORCAN04B 4 Button Dual Mode Wireless Mouse



Product Usage Instructions

- Open the battery compartment on the bottom of the mouse.
- The USB nano receiver is inside the battery compartment.
- Insert the included AA battery into the mouse. Close the battery compartment.
- Connect the USB nano receiver to a USB port on your computer or laptop.
- Turn on the mouse by switching the on/off switch, and it will be ready to use.

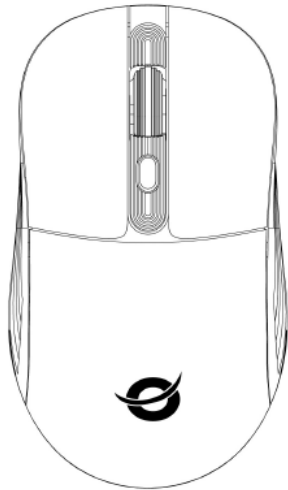
Switching Connection Modes

- For the first use, the mouse defaults to 2.4G mode. To switch to Bluetooth pairing mode, press and hold the DPI button for 5 seconds.
- To switch back to 2.4G mode, press and hold the DPI button for 5 seconds again.
- The red LED indicates 2.4GHz mode, and the blue LED indicates Bluetooth mode.
- Read the operating instructions carefully and observe safety information.
- Avoid water, humidity, fire, or hot environments.
- Keep devices away from small children and avoid leaving packaging material accessible to them.
- Avoid dropping, throwing, or crushing the device.
- Do not open, change, or damage the device.
- If a battery leaks, prevent contact with skin, eyes, clothes, or surfaces.
- Observe signs restricting electronic device use and turn off the device as instructed.
- Do not dispose of waste electrical equipment and batteries with household waste. Hand them to your local recycling point.
- Batteries should be fully discharged when disposed of to prevent harm to the environment or injury.
- Conceptronic declares that this product complies with the directives listed in the section 'Declaration of Conformity'.

FAQ

- **Q:** How do I know if the mouse is in Bluetooth mode?
- **A:** The blue LED indicates that the mouse is in Bluetooth mode.
- **Q:** Can I use this mouse with a Chromebook?
- **A:** Yes, this mouse is compatible with ChromeOS.

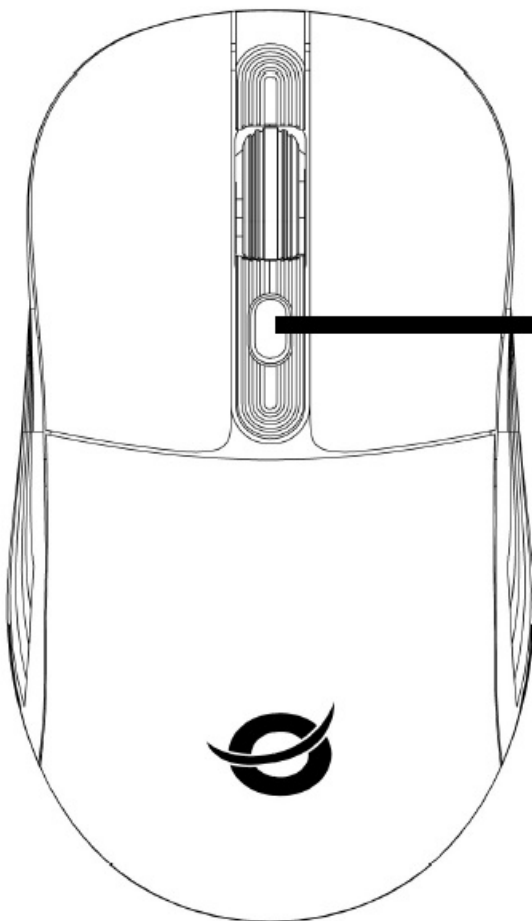
PACKAGE CONTENTS



1 x AA battery

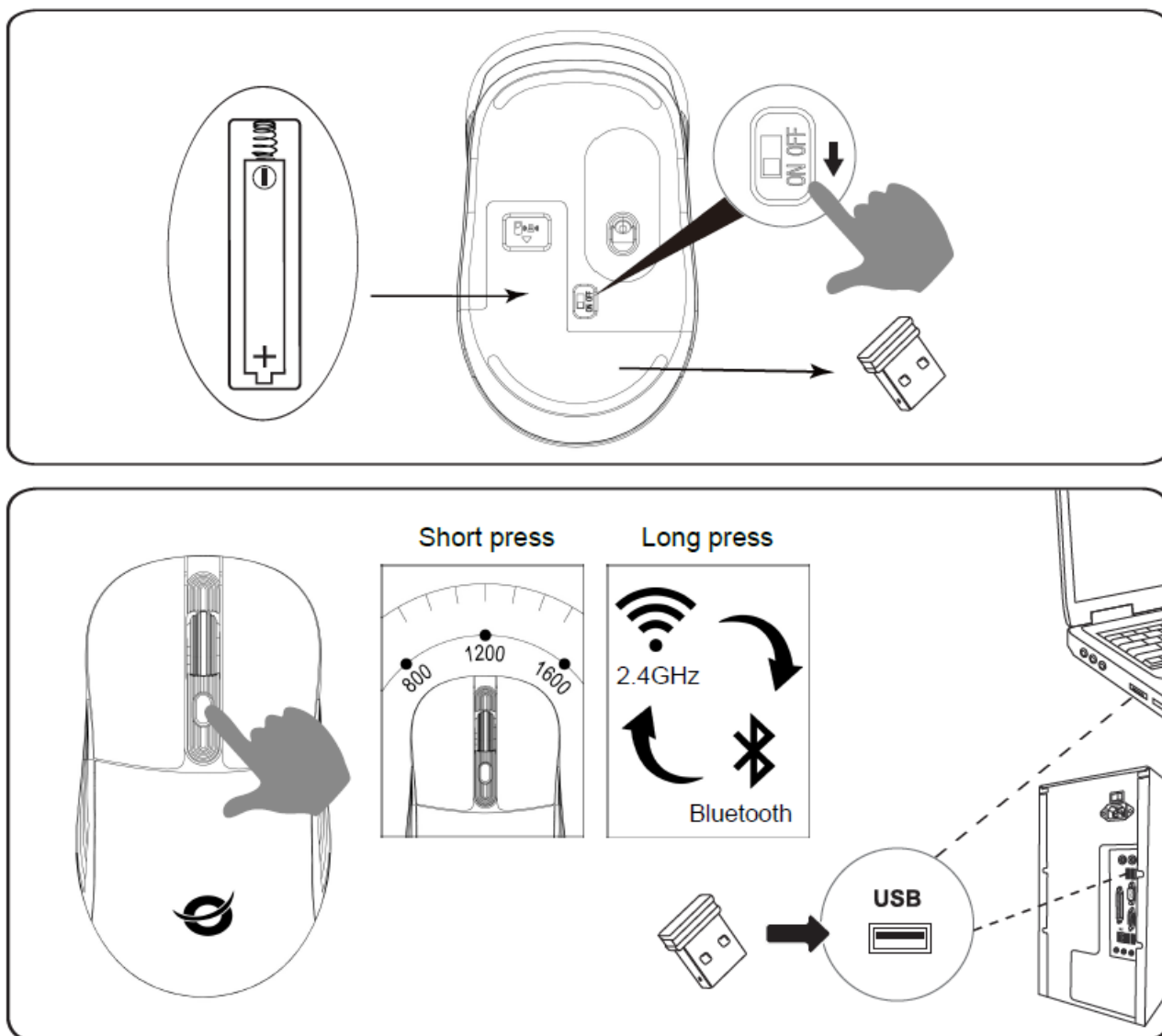


MOUSE BUTTON



EN DPI button

INSTALLATION



SPECIFICATION

Connection mode	Bluetooth 5.2 / 2.4GHz Wireless
Frequency range	2402 – 2480MHz
Maximum output power (EIRP)	3dBm
Rated voltage	1.5V
DPI setting	800 / 1200 / 1600
Compatible operating systems	Windows XP / 7 / 8 / 10 / 11, macOS ChromeOS, Android

Installation and usage

- Open the battery compartment on the bottom of the mouse. The USB nano receiver is inside the battery compartment.
- Insert the included AA battery into the mouse. Close the battery compartment.
- Connect the USB nano receiver to a USB port on your computer or laptop.
- Turn on the mouse by switching the on/off switch, and it will be ready to use.
- For the first use, the mouse defaults to 2.4G mode. To switch to Bluetooth pairing mode, press and hold the DPI

button for 5 seconds. To switch back to 2.4G mode, press and hold the DPI button for 5 seconds again.

- The red LED indicates 2.4GHz mode, and the blue LED indicates Bluetooth mode.

Safety and warning instructions

Read the operating instructions carefully and especially observe the safety information. If you do not follow the safety instructions and information on proper handling in this manual, we assume no liability for any resulting personal injury or damage to property. Such cases will invalidate the warranty/guarantee.

- Keep the device away from water, humidity, fire or hot environments.
- Keep your device and all its parts and accessories out of the reach of small children.
- Do not leave the packaging material lying around carelessly. This may become dangerous playing material for children.
- Avoid dropping, throwing or crushing the device.
- Do not open, change or damage the device.
- If a battery leaks, keep the leaked fluid from touching your skin, eyes, clothes, or other surfaces.
- Observe signs and notices that prohibit or restrict the use of electronic devices.
- Turn off your device in any location where instructed to do so.
- Turn off your device before cleaning.

Disposal of waste electrical equipment and batteries

- Do not dispose of waste electrical equipment and batteries with household waste.
- Please hand them to your local recycling point.
- Batteries should be fully discharged when disposed of.
- Incorrect storage/disposal can harm the environment and/or cause injury.





CE marking

- Conceptronic declares that this product complies with the directives listed in the section 'Declaration of Conformity'.




CONTACT


Need Help?

-  support@conceptronic.net
-  www.conceptronic.net

Documents / Resources

<div></div> <div>LORCAN04B</div> <div>Quick Installation Guide</div> <div>Schnellinstallationsanleitung Quick Installation Raport Guia de Instalación Rápida Guida di Installazione Rapida Cypis Teleguide d'Instalació Szybka Instrukcja Instalacji Guia de Instalação Rápida</div>	<div>CONCEPTRONIC LORCAN04B 4 Button Dual Mode Wireless Mouse [pdf] Installation Guide</div> <div>LORCAN04B 4 Button Dual Mode Wireless Mouse, LORCAN04B, 4 Button Dual Mode Wireless Mouse, Dual Mode Wireless Mouse, Wireless Mouse, Mouse</div>
---	--

References

-  [Home - Conceptronic](#)
- [User Manual](#)

[Manuals+](#), [Privacy Policy](#)

This website is an independent publication and is neither affiliated with nor endorsed by any of the trademark owners. The "Bluetooth®" word mark and logos are registered trademarks owned by Bluetooth SIG, Inc. The "Wi-Fi®" word mark and logos are registered trademarks owned by the Wi-Fi Alliance. Any use of these marks on this website does not imply any affiliation with or endorsement.