



Conceptronic CSATAi23U SATA and IDE to USB 2.0 Adapter User Manual

[Home](#) » [CONCEPTRONIC](#) » Conceptronic CSATAi23U SATA and IDE to USB 2.0 Adapter User Manual 

Contents

- [1 Conceptronic CSATAi23U SATA and IDE to USB 2.0 Adapter](#)
- [2 Package Contents](#)
- [3 Product Overview](#)
- [4 Connecting the CSATAi23U](#)
- [5 One Touch Backup](#)
- [6 FAQ's](#)
- [7 Related Posts](#)



Conceptronic CSATAi23U SATA and IDE to USB 2.0 Adapter



This user manual gives you a step-by-step explanation of how to install and use the Conceptronic CSATAi23U on your computer. If you need more information or support for your product, we advise you to visit our Service & Support website at www.conceptronic.net/support and select one of the following options:

- **FAQ:** Frequently Asked Questions database
- **Downloads:** Manuals, Drivers, Firmware, and more downloads
- **Contact:** Contact Conceptronic Support

For general information about Conceptronic products visit the Conceptronic website at www.conceptronic.net. When problems occur, we advise you to go to our support site (go to www.conceptronic.net and click 'Support'). Here you will find the Frequently Asked Questions Database.

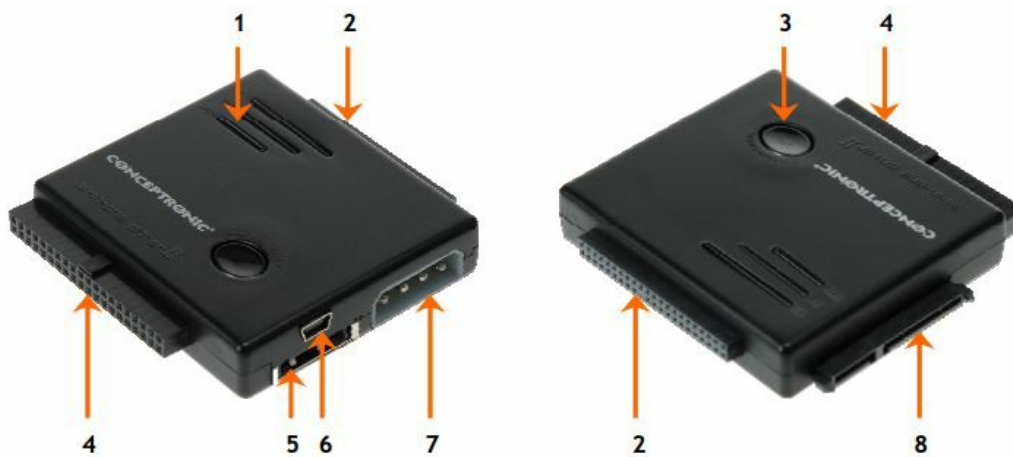
Note: The information in this manual is based on Windows Vista and Windows 7, but can differ from your computer when you are using a different operating system.

Package Contents

The following items are present in the package of the Conceptronic CSATAi23U:

- Conceptronic CSATAi23U SATA & IDE to USB & eSATA adapter
- Mini USB to USB cable
- Power supply
- Power cable for power supply
- Power splitter cable (For hard disk and CSATAi23U)
- IDE extension cable
- Product CD-ROM
- This multi-language user manual
- Warranty card & CE declaration booklet

Product Overview



Description of the numbers:

1. **LED indicators:** Power, Activity and SATA LED's
2. **2.5" IDE connector:** Connect a 2.5" IDE Device
3. **Copy button:** (Only works in combination with bundled software!)
4. **3.5" IDE connector:** Connect a 3.5" or 5.25" IDE Device
5. **eSATA connector:** Connect the CSATAi23U to your PC through eSATA *
6. **Mini-USB connector:** Connect the CSATAi23U to your PC through USB
7. **Molex power connector:** For power to the CSATAi23U
8. **SATA connector:** Connect a 2.5", 3.5" or 5.25" SATA Device

* If the eSATA connector is used for connection to your PC, you can only use the SATA connector on the CSATAi23U. It is not possible to connect an IDE device to the CSATAi23U and access it through the eSATA connection.

Connecting the CSATAi23U

Note: For connection examples, see the 'Appendix' at the end of the manual.

- A. Turn on your computer.
- B. **Connect the CSATAi23U to your storage device:**
 1. **For 2.5" IDE Devices:** Use the 2.5" IDE Connector (1)
 2. **For 3.5" & 5.25" IDE Devices:** Use the 3.5" IDE Connector (2)
 3. **For 2.5", 3.5" or 5.25" SATA Devices:** Use the SATA Connector (3)



Note: When connecting a 5.25" IDE device or an IDE and SATA device together, use the IDE extension

cable for the IDE device. Without the extension cable you cannot connect both devices correctly.

Note: Only the SATA and 3.5" IDE connection can be used at the same time! Connecting a 2.5" IDE & 3.5" IDE device, or 2.5" IDE & 3.5" SATA device at the same time is not supported!

- **C. Connect the Power Supply to the CSATAi23U:**

- For SATA Devices and 2.5" IDE devices: Connect the Power Supply directly to the CSATAi23U.
- For 3.5" & 5.25" IDE devices: Use the Power Splitter to provide power to the CSATAi23U and the IDE device.

- **D. Decide which interface cable you will use:**

eSATA connection:

- Connect the eSATA cable to the eSATA port of the CSATAi23U and to a free eSATA port on your computer.

Note: If you are using an IDE device with the CSATAi23U, you cannot use the eSATA connection.

USB connection:

- Connect the mini-USB connector of the included mini-USB cable to the mini-USB port of the CSATAi23U.
- Connect the USB connector of the mini-USB cable to a free USB port on your computer.

- **E. Turn on the Power Supply with the power switch in the cable.**

Windows will automatically detect the CSATAi23U and install it.

Note: If your computer does not support 'hot-swap' on the eSATA port, you need to reboot your computer after you have connected the CSATAi23U with eSATA to your computer.

Note: If you connect a new unused HDD, it does not appear in 'My Computer'. You need to create a partition on the HDD first before it will be visible. View the 'Partition Creation Manual' on the CD-ROM for instructions.

One Touch Backup

The CSATAi23U has a "One Touch Backup" button on top of the device. With this button, you can automatically make a backup of your documents, pictures, music, etc.

Installation of the backup software

- **A. Insert the CD-ROM in the optical drive of your computer. The AutoPlay option will be shown automatically.** Click on "Run Autorun.exe" to start the autorun menu.

Note: If the AutoPlay option is not shown, you can start the autorun menu by browsing to "Computer" and double-clicking on your optical drive.



- B. Select the option 'Install Backup Software' from the autorun menu.

Note: You might get a 'User Account Control' warning message, which you will need to accept by clicking on 'Yes'.

- C. The installation wizard will appear. Select 'Next' to proceed.
- D. Click on 'Install' to install the backup software on your computer.
- E. When the installation is finished, click on 'Finish' to close the installation wizard.

When the installation wizard is closed, the software is started automatically. The software will also start automatically when you restart your computer.

Configuring your backup

Before you can use the backup button, you need to select the folders to back up.

- A. Open the backup software window by double-clicking on the tray icon, the desktop icon or the entry in the 'Start' menu ('Start' -> 'All Programs' -> 'Backup Manager' -> 'Backup Manager').



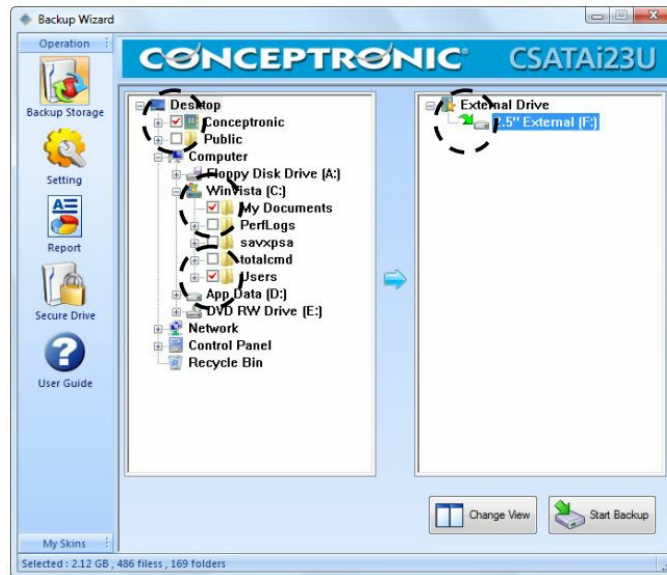
The main window of the software will be shown.



- B. Select the folders you want to backup on the left explorer of the backup software. Each folder you select will be indicated with a red 'v' mark.
- C. Select the destination drive for your backup on the right explorer of the backup software. When a destination is selected, it is marked with a green arrow.

Note: You can only select a drive connected to the CSATAi23U as the destination drive.

When you have selected the folders you want to backup and the destination drive, the main window of the software will look like the sample below:



You can now close the window by clicking the 'X' mark on the upper right corner of the main software window, or initiate a backup by clicking the 'Start Backup' button on the lower right corner. When you close the window, the software will keep running in the background, indicated by the tray icon in the lower right corner of your screen:

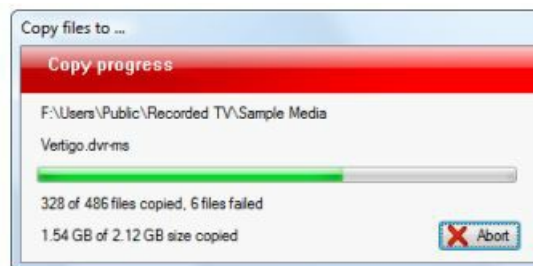


Note: The backup process will be explained in Chapter 4.3.

Starting a backup

When a backup is configured in Chapter 4.2, you can initiate the backup with the backup button on the CSATAi23U, or with the button 'Start Backup' in the main window of the software. When the button on the CSATAi23U or in the main window of the software is pressed, the backup software will start to copy the files to your backup location, as defined in Chapter 4.2.

During this copy process, a progress popup will be shown on your screen:



When the backup is finished, a backup summary report is shown on your screen:



Note: It is possible that the report is showing 'Failure' with a number of files. These files are in most cases files that are currently in use by other programs. To backup these files, make sure no other applications are running which have access to the selected folders in Chapter 4.2 before you press the backup button again. Click 'OK' to close the message.

Note: For more detailed information about the backup software, click the 'User Guide' button in the main window of the software.

FAQ's

What is the Conceptronic CSATAi23U SATA and IDE to USB 2.0 Adapter used for?

The Conceptronic CSATAi23U Adapter allows you to connect SATA and IDE (PATA) hard drives and optical drives to a computer via a USB 2.0 interface, enabling data transfer and external access to these devices.

What types of drives does the CSATAi23U adapter support?

The adapter supports both 2.5-inch and 3.5-inch SATA and IDE (PATA) hard drives, as well as optical drives, making it versatile for various storage devices.

Is the adapter compatible with USB 3.0 or USB 3.1 ports?

No, the Conceptronic CSATAi23U adapter is designed specifically for USB 2.0 ports. It will not work with USB 3.0 or USB 3.1 ports, as it does not support the higher data transfer speeds of those interfaces.

Does the adapter require external power for operation?

Yes, the adapter requires external power to function correctly when connecting power-hungry devices like 3.5-inch hard drives or optical drives. It usually comes with an external power supply.

Can I use the CSATAi23U adapter to clone hard drives?

Yes, the adapter supports hard drive cloning, allowing you to create identical copies of your drives for backup or migration purposes.

What operating systems does the adapter work with?

The CSATAi23U adapter is compatible with various operating systems, including Windows, macOS, and Linux, as it uses standard USB Mass Storage protocols.

Does the adapter support hot-swapping of drives?

Yes, the adapter typically supports hot-swapping, allowing you to connect or disconnect drives without having to power off the computer.

Can I use the CSATAi23U adapter with SSDs (Solid State Drives)?

Yes, the adapter is compatible with SATA SSDs, providing a convenient way to access and transfer data from these drives.

What is the maximum data transfer rate of the adapter?

As it uses a USB 2.0 interface, the maximum data transfer rate of the CSATAi23U adapter is up to 480 Mbps (megabits per second).

Does the adapter support RAID configurations?

No, the CSATAi23U adapter does not support RAID configurations. It is a basic SATA and IDE to USB adapter for individual drive access.

Can I use the adapter with CD/DVD drives?

Yes, the CSATAi23U adapter supports IDE (PATA) CD/DVD drives, allowing you to access and use optical media externally.

How do I connect and use the CSATAi23U adapter with my computer?

To use the adapter, connect the appropriate SATA or IDE drive to the adapter using the provided cables. Plug the USB end of the adapter into an available USB 2.0 port on your computer. Power on the external drive if needed, and your computer should recognize the drive, making it accessible like any other external storage device.

References: [Conceptronic CSATAi23U SATA and IDE to USB 2.0 Adapter – Device.report](#)