



Conceptronic CPSEVU USB 2.0 Print Server Quick Installation Guide

[Home](#) » [Support](#) » Conceptronic CPSEVU USB 2.0 Print Server Quick Installation Guide 

Contents

- [1 Conceptronic CPSEVU USB 2.0 Print Server](#)
- [2 Introduction](#)
- [3 General Features](#)
- [4 System Requirements](#)
- [5 Package Contents](#)
- [6 Hardware installation](#)
- [7 Software Installation](#)
- [8 Configuring your Conceptronic Print Server](#)
- [9 Configuring your Printer](#)
- [10 FAQ's](#)
- [11 Related Posts](#)



Conceptronic CPSEVU USB 2.0 Print Server



The enclosed Hardware Installation Guide gives you a step-by-step explanation of how to install the Conceptronic USB 2.0 Print Server. When problems occur, we advise you to go to our support site (go to www.conceptronic.net and click 'Support'. Here you will find the Frequently Asked Questions Database. When you have other questions about your product and you cannot find it at our website, then contact us by e-mail: support@conceptronic.net For more information about Conceptronic products, please visit the Conceptronic Web Site: www.conceptronic.net The Software installation as described below may be slightly different from the installation on your computer. This depends on the Windows version you are using.

Introduction

Congratulations on purchasing the Conceptronic Print Server, the easiest and fastest way to deploy printers on your network. This USB Print Server enables you to easily add a USB printer to your network. After installation, the printer can be used by any computer user inside the network without the need to have the printer connected to a computer. The Print Server is equipped with a network port in order to connect to network devices (for example a switch, network card, or hub). When you connect the Print Server to a wireless router, the Print Server even works wirelessly!

General Features

- Compliant with USB 1.1/2.0 Hi-speed
- Equipped with a 10/100 auto-MDIX Fast Ethernet LAN port
- Multi-protocol support is ideal for shared printing in mixed-LAN environments
- Windows-based program makes it possible to set up the Print Server in just a few minutes.
- LPR program for Windows 95/98/Me TCP/IP printing
- IP assignment support for DHCP
- Support Web configuration
- Flash memory for easy firmware upgrade
- Support IPP for Windows 2000/XP
- Support second HTTP port for remote web configuration and IPP printing.
- Support Mac OS 10.2 "Rendezvous" zero-configuration feature

System Requirements

Operating System:

- Microsoft Windows 95/98/ME/NT/2000/XP/2003.
- Apple Mac OS X or above

For Web Configuration:

- Java-enabled web browsers, such as Microsoft® Internet Explorer 5.0, Netscape Navigator 6.0 or Mozilla Firefox 1.x

Package Contents

The following items are present in the package of the Conceptronic Print Server:

- Conceptronic Print Server
- Power Supply 5V DC, 2,5A
- Multi-Language Quickstart Manual
- CD-ROM with software

Hardware installation

1. Make sure your printer is working normally on your computer before you proceed.
2. Power down the printer and disconnect the printer from the computer.
3. Connect the printer with the USB cable to your Conceptronic Print Server.
4. Connect a LAN network cable to your Conceptronic Print Server and your switch or router.
5. Power on the Printer and connect the power supply to the Conceptronic Print Server.

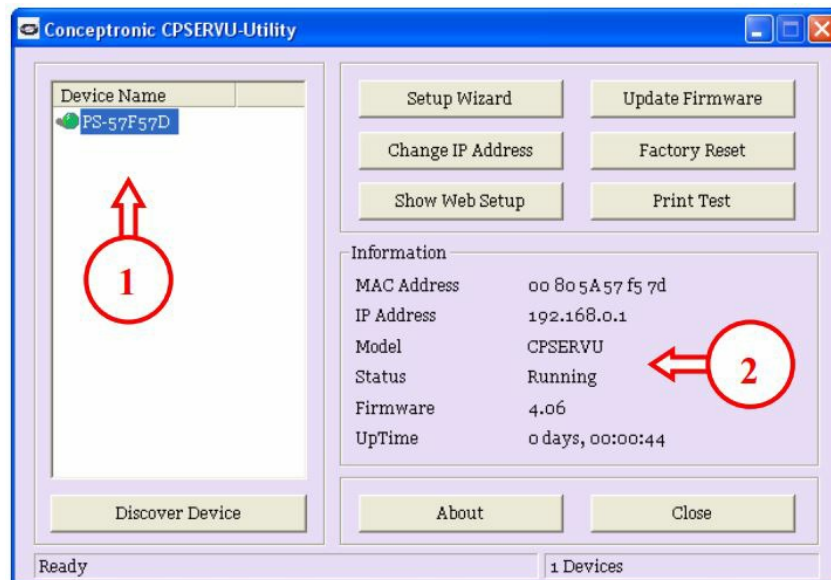
NOTE: Your Conceptronic Print Server is equipped with a default IP address. This IP address can be different than the IP Range in your network, or it can give conflict with a device in your network with the same IP Address. To prevent this, you can use the Conceptronic Print Server Utility to change the IP address of the Print Server. By default, the IP address of the Print Server is: 192.168.0.2

Software Installation

1. Place the CD-ROM delivered with the Conceptronic Print Server in your CD-ROM drive.
2. Open Windows Explorer, navigate to the CD-ROM and open the folder "PS Utility".
3. Execute "Setup.exe" from the directory "PS Utility" and complete the installation steps on your screen.
4. After installation, you can find the Configuration Utility for the Print Server in your 'Start Menu'.

Configuring your Conceptronic Print Server

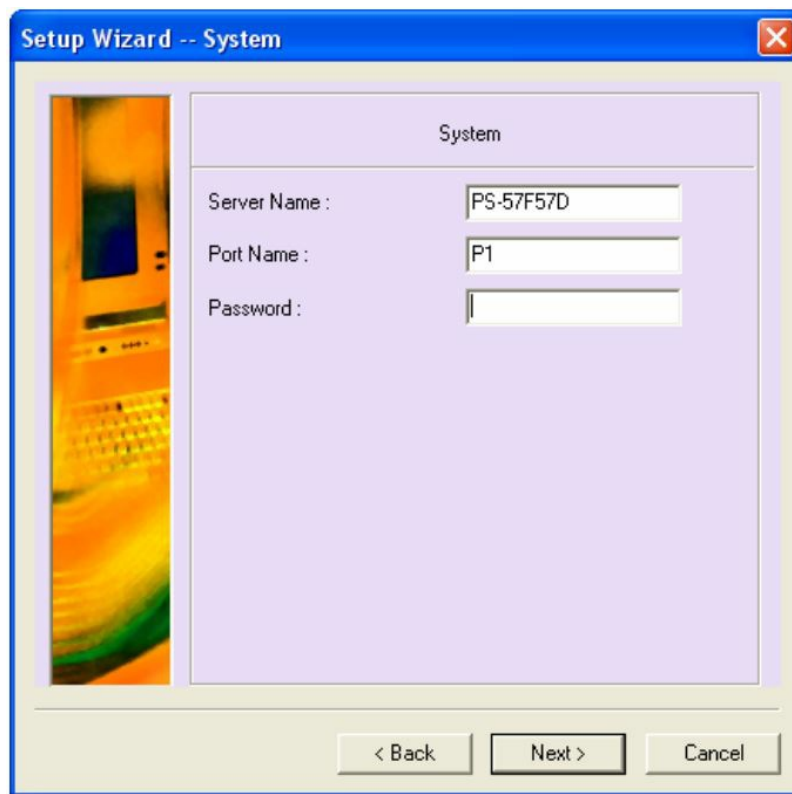
To configure your Conceptronic Print Server, you can use the installed Configuration Utility. When you execute the Utility, you will get the following screen:



At the left (1), you can see the discovered devices in your network. At the right (2), you see the information of the selected Print Server. You have the following selections in the Conceptronic CPSERVU Utility:

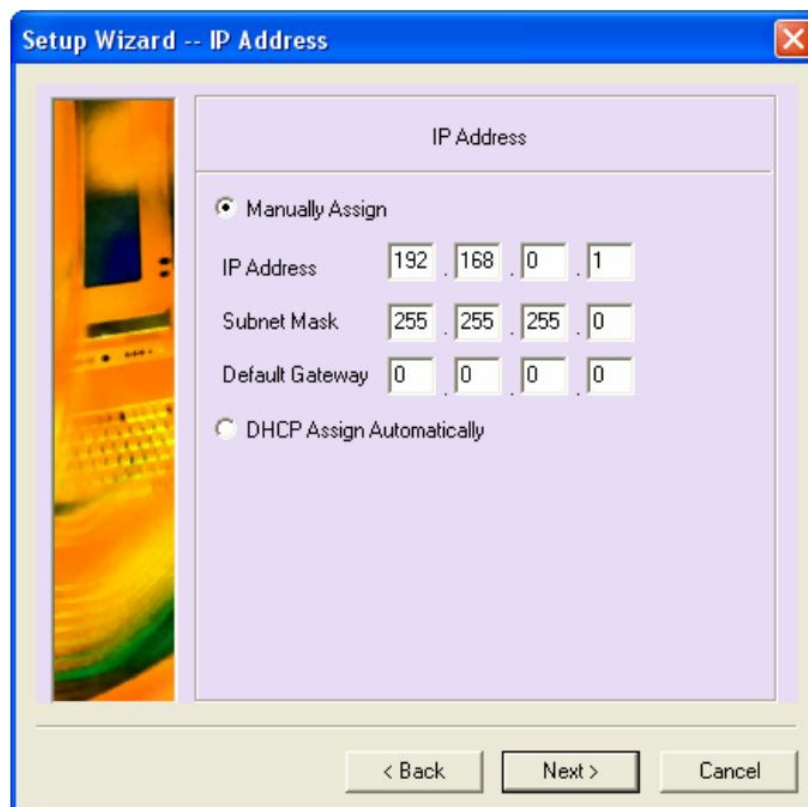
- | • Selection | Description |
|-----------------------------|---|
| • Discover Device: | Refreshes the screen and searches for all available Print Servers in your network. |
| • Setup Wizard: | Launches the Setup Wizard to configure the Print Server. |
| • Change IP Address: | Changes the IP Address of the Print Server |
| • Show Web-Setup: | Launches your Internet Explorer and opens the web configuration of the Print Server. |
| • Update Firmware: | Updates the firmware for your Print Server. |
| • Factory Reset: | Resets the Print Server to its factory default settings. All changes made will be erased. |
| • Print test: | Prints a test page on the connected printer. |
| • About: | Shows information about the Utility |
| • Close: | Closes the Configuration Utility. |

Press “Setup Wizard” to begin with the configuration of the Print Server. An introduction Dialog Box will appear. Press “Next” to continue the configuration. You will see the following screen:



The "Setup Wizard -- System" dialog box features a blue title bar with a close button. On the left is a vertical image of a printer. The main area has a light purple background with the title "System". It contains three input fields: "Server Name" with the text "PS-57F57D", "Port Name" with the text "P1", and an empty "Password" field. At the bottom are three buttons: "< Back", "Next >", and "Cancel".

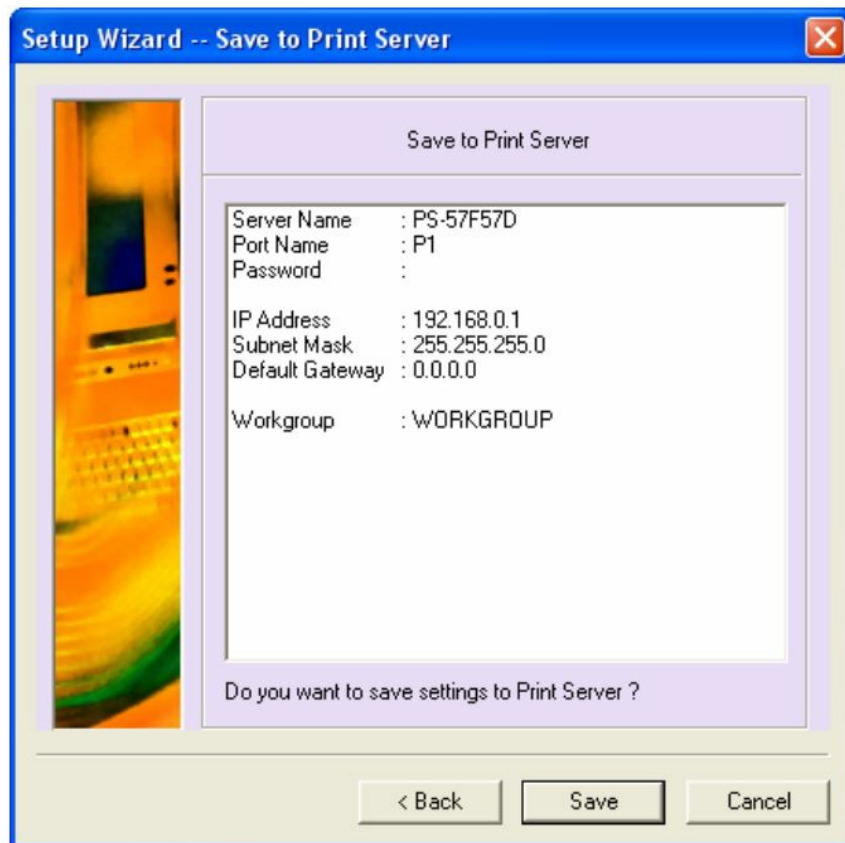
You can give the Print Server a name in your network. Enter this at “Server Name”. The “Port Name” represents the name of the port where your printer is connected to. To protect your Print Server with a password, enter the password desired. When the above information is entered, press “Next”. You will see the IP Configuration screen.



The "Setup Wizard -- IP Address" dialog box has a blue title bar with a close button. On the left is a vertical image of a printer. The main area has a light purple background with the title "IP Address". It contains two radio buttons: "Manually Assign" (selected) and "DHCP Assign Automatically". Below the radio buttons are three rows of input fields: "IP Address" (192, 168, 0, 1), "Subnet Mask" (255, 255, 255, 0), and "Default Gateway" (0, 0, 0, 0). At the bottom are three buttons: "< Back", "Next >", and "Cancel".

When needed, you can change the IP address and Subnet Mask of your Print Server. You can also set the configuration to “DHCP Assign Automatically” if you have a DHCP server in your network.

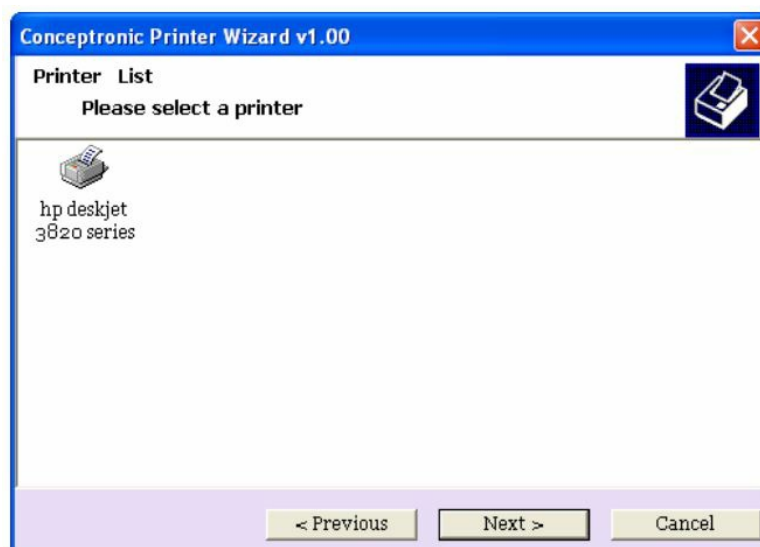
NOTE: If you configure the Print Server for DHCP, the IP address of the Print Server can become unknown to the user. If you want to configure the device after this change, you can use the Utility to scan for the Print Server.



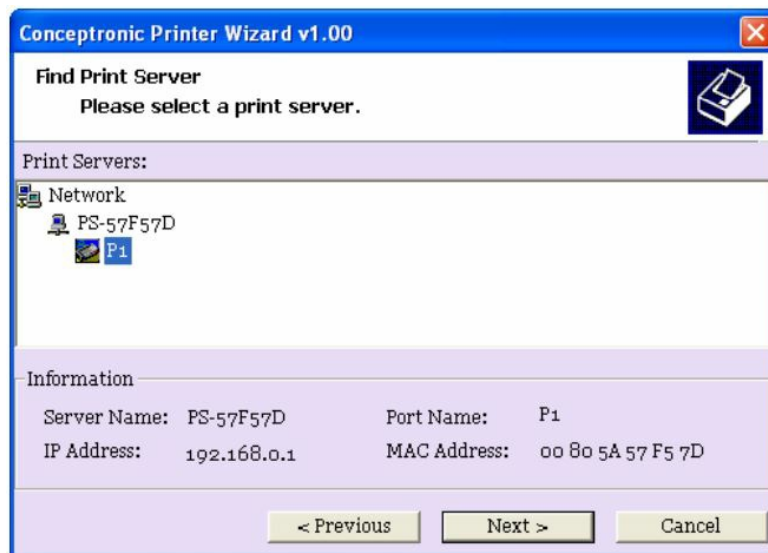
To save your settings, press “Save”. To make any changes, press “Back”, or press “Cancel” to abort the configuration. When you press “Save”, the configuration will be saved in the Print Server. The Print Server is now correctly configured for your network.

Configuring your Printer

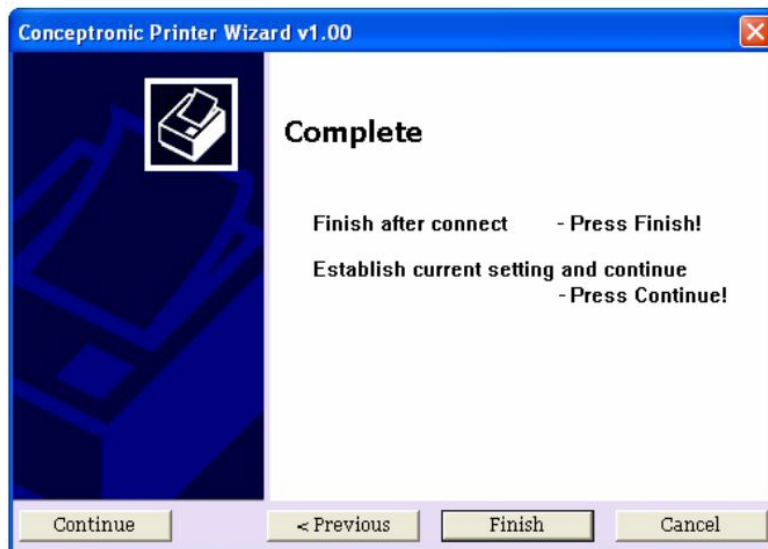
When the Print Server is configured, you need to adjust the installed printer drivers to communicate with the Print Server. You can do this automatically with the program “PS Wizard”, which can be found on the CD-ROM. Place the CD-ROM delivered with the Conceptronic Print Server in your CD-ROM drive. Open Windows Explorer, navigate to the CD-ROM, and open the folder “PS Wizard”. Run the program “PS Wizard.exe” in the directory “PS Wizard”. The program “Conceptronic Printer Wizard” will start. Press “Next” to start with configuring your printer:



Select the printer you want to configure for the Conceptronic Print Server and press “Next”.



The program will scan for the Print Server in your network. When it is found, it will be shown at the “Network” Section. Double-click on the Print Server. The Printer port on the Print Server will be shown. Select the port and press “Next”.



- The Wizard is ready to change your printer settings.
- Press “Finish” to save the settings and exit the Wizard.
- Press “Continue” to save the settings and return to the first screen of the Wizard. Press “Previous” to make adjustments in your configuration.
- Press “Cancel” to abort the configuration and exit the Wizard.
- Your printer is now ready for use with the Print Server!

NOTE: A full detailed manual can be found in the folder “Manual” on the CD-ROM. (You will find an English manual with all options of the software explained)

FAQ's

What is the Conceptronic CPSEVU USB 2.0 Print Server?

The Conceptronic CPSEVU USB 2.0 Print Server is a device that allows you to share a USB printer on your network, enabling multiple computers to print to a single printer without the need for direct connections.

How do I set up the CPSERVU USB 2.0 Print Server?

The setup process involves connecting the print server to your network, connecting the USB printer, and configuring the print server's settings through its web interface or dedicated software.

Is the CPSERVU compatible with all USB printers?

The CPSERVU is compatible with a wide range of USB printers, but it's recommended to check the compatibility list provided by Conceptronic to ensure your printer is supported.

Can I use the CPSERVU Print Server wirelessly?

No, the CPSERVU USB 2.0 Print Server connects to your network through a wired Ethernet connection, not wirelessly.

Does the CPSERVU support bi-directional communication with printers?

The CPSERVU supports basic printing functions, but it might not support advanced features that require bi-directional communication between the printer and the computer.

How do I access the CPSERVU's web interface?

You can usually access the web interface by entering the print server's IP address in a web browser. The exact address and login details can be found in the user manual.

Can I print from mobile devices using the CPSERVU?

Since the CPSERVU does not have wireless capabilities, printing directly from mobile devices might not be possible. You can consider connecting your mobile device to a computer on the same network that's connected to the CPSERVU for printing.

Is there any software required to use the CPSERVU?

The CPSERVU might come with software for initial setup and configuration. However, once set up, you can typically use your operating system's standard printer setup and driver installation process.

Can I share multiple USB printers using a single CPSERVU?

Generally, the CPSERVU is designed to share one USB printer at a time. If you want to share multiple printers, you might need multiple print servers.

Can I secure my print jobs when using the CPSERVU?

The level of security might vary depending on the model and configuration. It's recommended to check the

user manual for information on security features and settings.

What's the maximum distance between the CPSEVU and the printer?

The maximum distance might depend on the quality of your network infrastructure, but generally, CPSEVU Ethernet connection can cover standard Ethernet cable lengths.

What do I do if I'm experiencing issues with the CPSEVU?

If you're facing issues, you can start by checking the user manual for troubleshooting tips. If the issue persists, you can reach out to Conceptronic's customer support for assistance.

References: [Conceptronic CPSEVU USB 2.0 Print Server – Device.report](#)