

concept KD4000 Baby Monitor with Camera



concept KD4000 Baby Monitor with Camera Instruction Manual

[Home](#) » [concept](#) » concept KD4000 Baby Monitor with Camera Instruction Manual 

Contents

- [1 concept KD4000 Baby Monitor with Camera](#)
- [2 Product Information](#)
- [3 Product Usage Instructions](#)
- [4 FAQ](#)
- [5 TECHNICAL SPECIFICATIONS](#)
- [6 IMPORTANT SAFETY PRECAUTIONS](#)
- [7 PRODUCT DESCRIPTION](#)
- [8 OPERATING INSTRUCTIONS](#)
- [9 Documents / Resources](#)
 - [9.1 References](#)

concept

concept KD4000 Baby Monitor with Camera



Product Information

Specifications

- **Power Supply:** DC 5 V / 1 A from adapter

Description

The KD4000 is a versatile product designed to provide various functions. It features an indicator light, microphone, pairing button, LED lamp, SD card slot, speaker, USB-C power connector, and reset button.

Product Usage Instructions

Connecting the Camera to the Application

1. Ensure your Wi-Fi network is operating at 2.4 GHz as the camera does not support 5 GHz networks.
2. Download the Concept Home application on your phone.
3. Follow the application's instructions for pairing the camera.

Installing the Camera

The camera can be placed on a flat surface (refer to Method 1) or mounted on a wall using the included mounting bracket (refer to Method 2).

Maintenance and Servicing

For more complex maintenance or repairs requiring internal intervention, it is recommended to seek assistance from qualified service personnel.

Environmental Protection

The product complies with all relevant EU directives regarding environmental protection.

FAQ

- Can the camera connect to a 5 GHz Wi-Fi network?
- No, the camera only supports 2.4 GHz Wi-Fi networks.
- How do I reset the camera?
- To reset the camera, use the reset button located on the device.
- Is the product warranty void if serviced by unauthorized personnel?
- Yes, tampering with the product by unauthorized personnel may void the warranty.

ACKNOWLEDGMENT

Thank you for purchasing a Concept product. We wish you much joy with your new appliance every day you use it. Please read the instruction manual carefully before initial use. To refer to this manual any time you need to, we recommend you to keep it in a safe place. And please pass it to any future owner of the appliance.

TECHNICAL SPECIFICATIONS

- **Power supply:** DC 5 V / 1 A from the adaptor

IMPORTANT SAFETY PRECAUTIONS

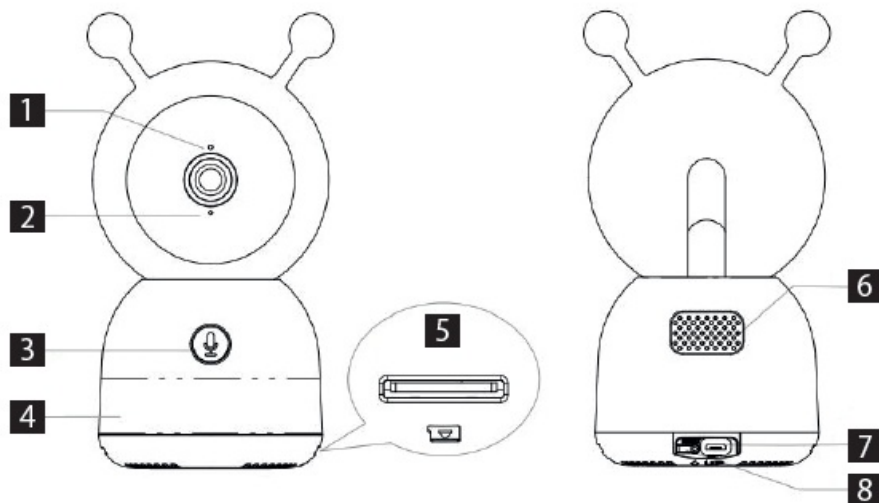
- Do not use the appliance in any other way than as described in this manual.
- Remove all the covering and marketing materials from the appliance before the first use.
- Make sure the mains voltage corresponds to the values on the rating plate of the appliance.
- When disconnecting the appliance from the wall outlet, never pull the power cord, grasp the plug end and disconnect it by removing it from the receptacle.
- Do not allow children or unauthorized people to handle the appliance, use it out of their reach.
- Persons with reduced mobility, reduced sensory perception, mental disadvantage or persons not familiar with the operation must use the appliance only under the supervision of a responsible person, who is familiar with the instructions.
- Care should be taken when using the appliance near children.
- Do not let the power cord touch hot surfaces.
- Do not allow the appliance to hang on the power cord.
- Do not use the appliance in an environment where there are explosive gases and flammable substances (solvents, varnishes, adhesives, etc.).
- Do not use coarse and chemically aggressive substances to clean the appliance.
- Do not use the appliance if it is not working properly, or has been dropped, damaged or immersed in liquid. Has it been checked and repaired by an authorized service centre?
- Do not use the appliance with a damaged cord or plug and have it repaired immediately by an authorized service centre.
- Do not wrap the power cord around the appliance body.
- Do not use the appliance outdoors.

- The appliance is only suitable for home use and is not intended for commercial use.
- Do not immerse the power cord, plug or appliance in water or any other liquid.
- Do not use any accessories other than those recommended by the manufacturer.
- Do not repair the appliance yourself. Contact an authorized service centre.
- This appliance can be used by children aged 8 years and above and persons with reduced physical, sensory or mental capabilities or lack of experience and knowledge if they have been given supervision or instruction concerning the use of the appliance in a safe way and understand the hazards involved. Cleaning and maintenance performed by the user must not be carried out by children unless they are 8 years old and under supervision. Children under 8 years of age must be kept away from the appliance and its power cord. Do not let children play with the appliance.

Damages from failure to follow the manufacturer's instructions are not covered by the warranty.

PRODUCT DESCRIPTION

1. Status indicator
2. Microphone
3. Call/pair button
4. LED light
5. SD card slot
6. Speaker
7. USB-C Power supply connector
8. Restart button



OPERATING INSTRUCTIONS

Connecting the baby monitor to the app

1. Make sure your Wi-Fi network is 2.4GHz. The baby monitor does not support 5GHz networks.
2. Download the Concept Home app to your mobile phone. Register or log in to your account.
3. Restart the camera using the restart button.

4. Follow the instructions in the app on your mobile phone.

Baby monitor features

- **Motion/sound detection** – The baby monitor can detect motion and sound and then send a notification to your phone.
- **LED light/lullaby** – When your baby cries, you can play a lullaby or turn on the night light. There are different lullabies and light modes to choose from.

Downloading the app

- Find and download the Concept Home app from Google Play or App Store to your mobile phone.
- If you already have Concept Home, open the app, sign in, and continue with the pairing instructions.

App

Register or log in to the app.

- Once logged in, click on “Přidat zařízení” (“Add device”) (see Fig. 1) and then select the icon of the desired device, in this case, “Kamera (Wi-Fi)” (“Baby Monitor (Wi-Fi)”) in the “Video dolled” (“Video monitoring”) section (see Fig. 2).

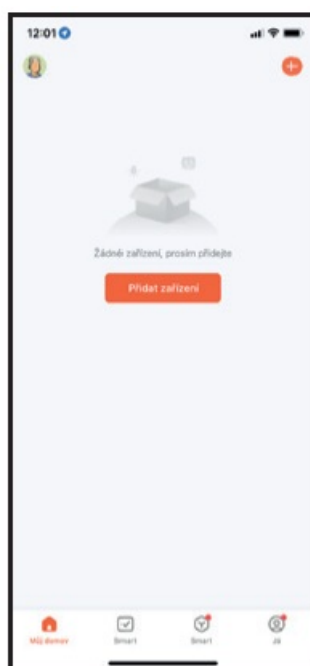


Fig. 1



Fig. 2

- Connect the device using the USB cable and hold the button on the front of the baby monitor until it beeps 3 times, then click “Další” (“Next”) (see Fig. 3).

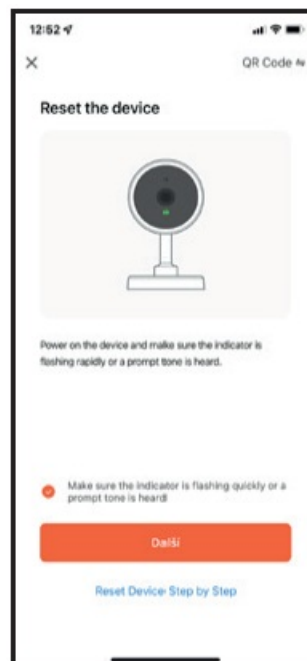


Fig. 3

- Enter the login information for your wireless network (see Fig. 4).

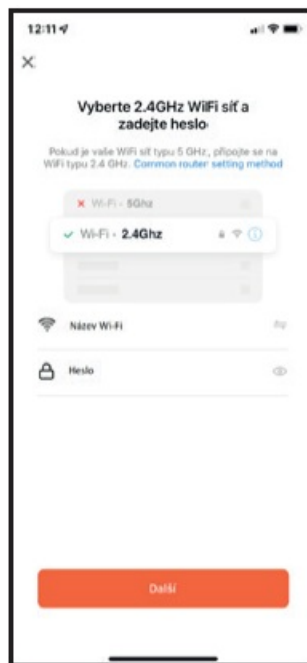


Fig. 4

- A QR code will appear on your mobile phone display and you can point it at the monitor from a distance of 15-20 cm. After successful pairing, the baby monitor will beep 3 times again. Then click on the “Ozve se pípnutí” (“Beep”) button (see Fig. 5). The baby monitor will now connect to your mobile phone (see Fig. 6).

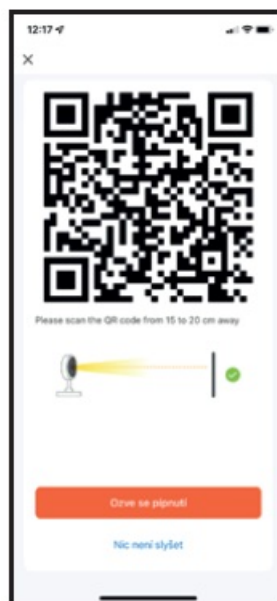


Fig. 5

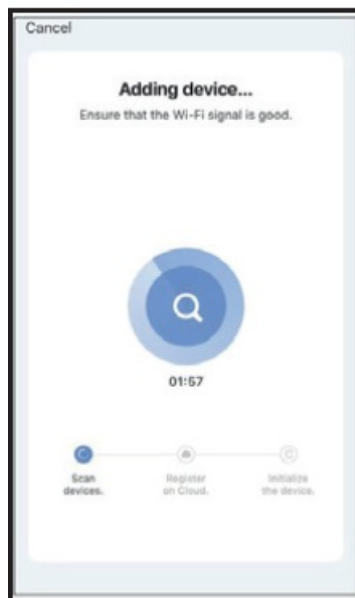


Fig. 6

- Once the baby monitor is successfully connected to your mobile phone, you can rename your device and then click on “Dokončit” (“Finish”) (see Fig.7).

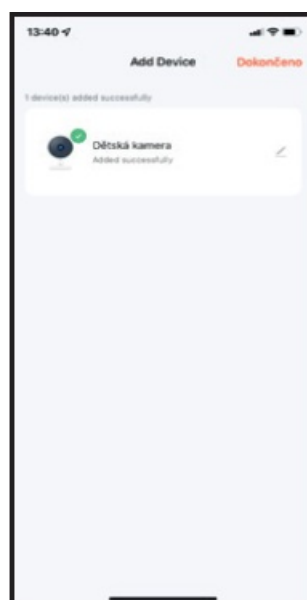


Fig. 7

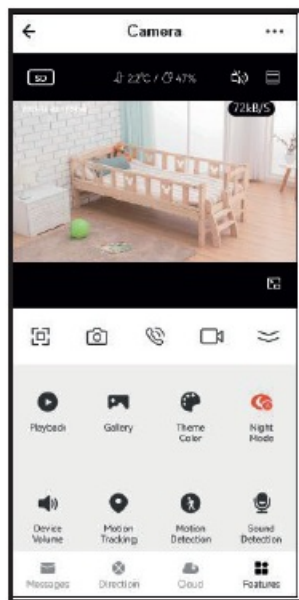
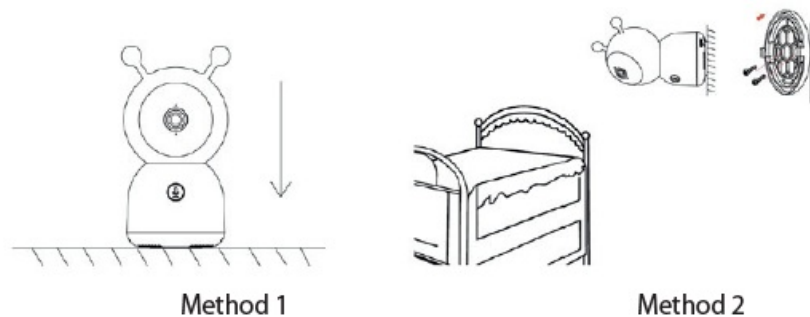


Fig. 8

Baby monitor installation options

You can place the baby monitor on a flat surface (see Method 1 figure), or mount it on the wall using the included mounting bracket (see Method 2 figure).



SERVICE

Extensive maintenance or repair, which requires access to internal parts of the product, has to be performed by a qualified service centre.

ENVIRONMENTAL CONCERNS

- Packaging materials and old appliances should be recycled.
- Packaging materials may be disposed of as sorted waste.
- Dispose of the plastic bags made of polyethylene (PE) of as sorted waste.

Recycling of the appliance at the end of its lifespan

This appliance is labelled under the European Directive 2012/19/EU concerning used electrical and electronic appliances (Waste Electrical and Electronic Equipment – WEEE). The symbol on the product or on its packaging indicates that this product may not be treated as household waste. Instead, it should be taken to the appropriate collection point for the recycling of electrical and electronic equipment. By ensuring this product is disposed of correctly, you will help prevent potential negative consequences for the environment and human health, which could otherwise be caused by inappropriate waste handling of this product. The disposal of such material has to be done according to the recycling regulations. For more detailed information about recycling this appliance see the authorized local office or service for household waste disposal or the shop, where you purchased the appliance.



The product meets all the requirements of the EU directives applicable to the specific product.
Changes in text, design, and technical specifications are subject to change without notice and we reserve the right to change them.



Documents / Resources

<div><div>concept</div><div><div><div>Dit is de camera</div><div>Dit is de camera</div><div>Kamera af de foto</div><div>Baby monitor</div><div>Kamera voor de foto</div><div>Baby monitor</div></div><div><div>Baby monitor met camera</div><div>Camera voor de foto</div><div>Taken camera voor de foto</div><div>Camera voor de foto</div><div>Camera voor de foto</div><div>Camera voor de foto</div></div></div><div></div><div><div>KD4000</div><div><div>1</div><div>2</div><div>3</div><div>4</div><div>5</div><div>6</div><div>7</div><div>8</div><div>9</div><div>10</div></div></div></div>	<div><div>concept KD4000 Baby Monitor with Camera [pdf] Instruction Manual</div><div>KD4000, KD4000 Baby Monitor with Camera, Baby Monitor with Camera, Monitor with Camera, Camera</div></div>
---	---

References

- [User Manual](#)

[Manuals+](#), [Privacy Policy](#)

This website is an independent publication and is neither affiliated with nor endorsed by any of the trademark owners. The "Bluetooth®" word mark and logos are registered trademarks owned by Bluetooth SIG, Inc. The "Wi-Fi®" word mark and logos are registered trademarks owned by the Wi-Fi Alliance. Any use of these marks on this website does not imply any affiliation with or endorsement.