



# Conambo K10C Bluetooth 5.1 Headset with Dual Mic Noise Cancelling User Guide

[Home](#) » [CONAMBO](#) » Conambo K10C Bluetooth 5.1 Headset with Dual Mic Noise Cancelling User Guide 

## Contents

- [1 Conambo K10C Bluetooth 5.1 Headset with Dual Mic Noise Cancelling](#)
- [2 Important Safety Information](#)
- [3 Operations](#)
- [4 Enter Pairing Mode](#)
- [5 Connect Your Phone](#)
- [6 Pair And Connect With The Second Device](#)
- [7 Wearing](#)
- [8 Troubleshooting](#)
  - [8.1 The Mobile Phone Can Not Find The Headset](#)
- [9 No Sound From The Headset](#)
- [10 The Charging Red Indicator Doesn't Light On](#)
- [11 FAQs](#)
- [12 Video – Product Overview](#)
- [13 Related Posts](#)

***CONAMBO***

**Conambo K10C Bluetooth 5.1 Headset with Dual Mic Noise Cancelling**



## Welcome to your new Conambo Headset

We appreciate your choice of the Conambo headset. Before use, please read this manual carefully and keep it for future reference. To learn more and get support, welcome to visit our official website: [www.conambo.com](http://www.conambo.com), email us via [sales@conambo.com](mailto:sales@conambo.com), or call us at 86-755-88608031.

## Important Safety Information

- Do not use the headset at a high volume for any extended period to prevent hearing damage.
- The K10C is powered by a built-in rechargeable battery, please charge the battery for at least 2 hours before first use.
- Removal of the battery in the headset shall NOT be conducted on your own.
- Do not expose the headset to moisture, extreme or prolonged heat, cold, humidity, or other adverse conditions. Clean the unit with a soft cloth or damp chamois leather. Never use solvents.
- Keep the headset, accessories, and packaging parts out of reach of children to prevent accidents and choking hazards.
- Do not drop, crush, bend, or apply excessive force to the device.

## Operations



### • Charging the headset

The built-in battery is rechargeable and please use the included micro USB cable to charge the headset by connecting to a USB port of your computer, power bank or into a USB AC adapter(requires 5VDC). Turn off the headset before charging, while charging, the red indicator stays on. Once fully charged, the blue indicator will light on. NOTE: Do not attach the charger mid-call. This will cause the headset to reset, and the call will be sent back to the phone.

### • POWER ON

Slide the switch down, the blue indicator will flash once and you will hear a voice prompt, "Power on".

### • POWER Off

Slide the switch up, the red indicator will flash two times and you will hear a voice prompt, "Power off".

### • Pairing & Connection

#### Enter Pairing Mode

1. Auto-enter pairing mode When you power on the headset for the first time, the blue and red indicator flashes alternately and you will hear a voice prompt, "pairing". Or hold the Multi-Function Button for 5s until the blue and red indicator flashes alternately when powered on.

#### Connect Your Phone

1. Turn on the headset and enter the pairing mode (the headset indicator flashes red and blue alternately), Put on your headset, and will hear "pairing".
2. Put your cell phone in Bluetooth Search/Scan Mode.
3. Select "K10C" to pair. (Password is "0000" if needed.)
4. When connected, you will hear a voice prompt "connected" and the blue indicator will flash once.

#### Pair And Connect With The Second Device

1. Turn off the Bluetooth function of the first device.
2. While your headset stays powered on, hold the Multi-Function Button for 5s until the headset enters pairing

mode, and the headset indicator flashes red and blue alternately.

3. Put your second device in Bluetooth Search/Scan Mode, and select "K10C".
4. When connected, you will hear a voice prompt "connected" and the blue indicator will flash once.

- **Answering/Reject a Call**

1. When a call is coming, press the Multi-Function Button once to answer the call and press it again to end the call.
2. When a call is coming, press and hold the Multi-Function Button 1-2s to reject the call.

- **Last Number Redial**

1. Make sure the headset is connected to your phone.
2. Double-tap the Multi-Function Button to redial the last number.

- **Phone Voice Control (e.g. Siri/ Google Assistant )**

Press the Mute Button for 3s while the headset is in standby status to activate voice command functions on your phone. Support for this is phone dependent.

- **Adjust the volume**

Press the volume up or down during a call or while streaming audio.

- **Mute**

During a conversation, press the Mute button. You hear "mute on" or "mute off".

- **Reconnect**

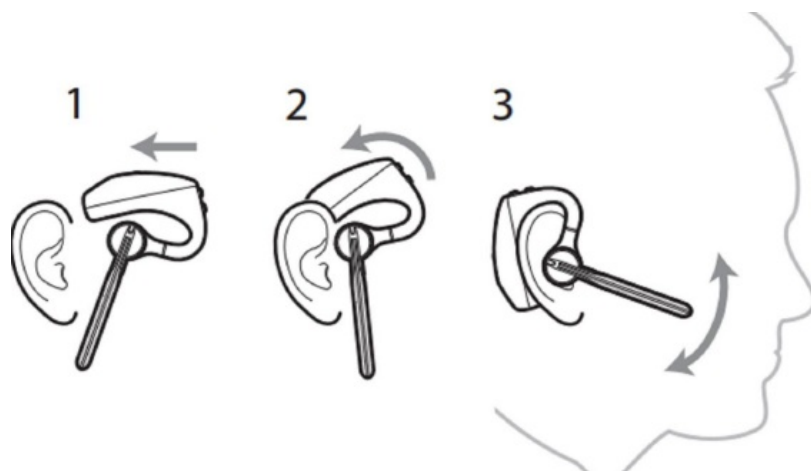
1. Your headset will directly connect with the previous Bluetooth device.
2. If the headset doesn't connect, please hold Multi-Function Button for 5s until the blue and red indicator flashes alternately to enter pairing mode.

- **Resetting**

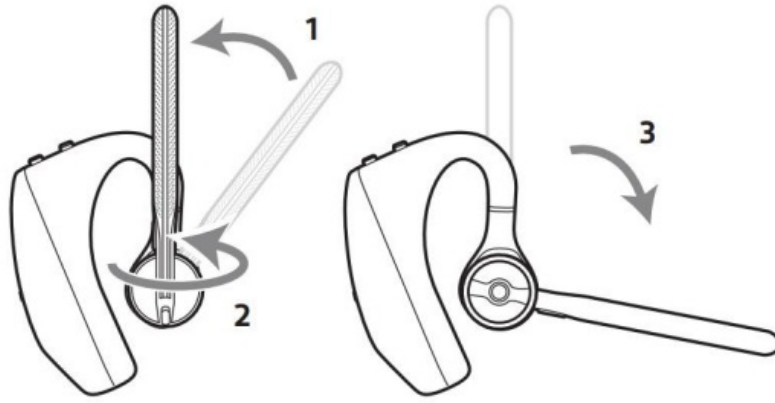
When charging, hold the Multi-Function Button for 4s till the blue indicator flashes to recover default settings.

## **Wearing**

**NOTE** Remove your eyeglasses before donning the headset for the best fit.



To wear the headset on your other ear, rotate the boom upwards then twist it around so the eartip is on the other side before lowering the mic boom.



## Troubleshooting

### The Mobile Phone Can Not Find The Headset

#### Possible Reasons:

1. The headset is not under ON and standby state;
2. The headset program is error;
3. The program of the mobile phone is an error.

#### Solutions:

1. Turn on the headset, and hold the Multi-Function Button for 5s (red and blue indicator flashes alternately) to enable pairing status;
2. Recover the Wireless headset's default settings if the headset program is in error.
3. After restarting the mobile phone, remove all pairing data in the Wireless of the mobile phone.

#### Cautions:

1. After the Wireless headset has entered in the pairing mode, it will connect within 2mins, otherwise, the headset will automatically turn off.
2. When charging, hold the Multi-Function Button for 4s till the blue indicator flashes to recover the default setting.

### No Sound From The Headset

#### Possible Reasons:

1. The volume of the mobile phone is unsuitable;
2. The Wireless headset and mobile phone are not connected correctly;
3. The Wireless headset is out of the working range.

#### Solutions:

1. Adjust the volume in the mobile phone;
2. Operate with the reference of the use steps;
3. Keep the headset in the range of 10m of the mobile phone without any obstacles.

#### Cautions:

1. Do not have any other operation when searching headset for avoiding program errors;
2. Please use a headset near the mobile phone to assure a stable signal.

## **The Charging Red Indicator Doesn't Light On**

**Possible Reasons:** The headset has not been used for a long period.

**Solutions:** Charge the headset for 30mins, then the red indicator may light on.

**Cautions:** It will drop the capacity and service life of the battery if it is overcharged or the Wireless headset is stored in an environment such as a closed car.

**Made by SHENZHEN KENANBO TECHNOLOGY CO.,LTD**

Add: RM. 208, Building 2, Jinfanghua E-business Industrial Zone, No 450 Bulong Rd. Bantian Street, Longgang District, Shenzhen.

**TEL:** 86-755-88608031

**E-mail:** [sales@conambo.com](mailto:sales@conambo.com) [www.conambo.com](http://www.conambo.com)

## **FAQs**

### **What is the difference between K10C and K10?**

The K10C is a new model that supports Bluetooth 5.1, and dual-mic noise canceling and it comes with a charging case.

### **What is the difference between K10C and K20?**

The K10C is a new model that supports Bluetooth 5.1, and dual-mic noise canceling and it comes with a charging case.

### **Does the headset support a voice assistant?**

Yes, you can use Siri or Google Assistant to control your phone by saying "Hey Siri" or "OK Google".

### **Does the headset support touch control?**

Yes, you can use touch control to play/pause music, answer/reject calls, etc.

### **Does the headset support NFC?**

No, the headset does not support NFC.

### **What are the benefits of noise-canceling headphones?**

High-quality headsets using a noise-canceling microphone will reduce background noise, allowing your caller to hear your voice more clearly. This is very important, because the clearer your voice is, the less information needs to be repeated, and your conversation will be more accurate.

### **Can Bluetooth headphones connect to multiple devices?**

With Multipoint headphones, you can connect to 2 Bluetooth devices at the same time and select which audio source to play. This way, if you're playing media on one device, your headphones can switch to calls on another connected device.

### **What is the pairing mode on Bluetooth headphones?**

When you pair the headphones with a device for the first time or after initializing, the headphones automatically enter the pairing mode when you remove them from the charging case. If you put on the headphones, you will hear a notification sound and the voice guidance saying Bluetooth pairing from the left unit.

### **Can Bluetooth headphones connect to the switch?**

From the Nintendo Switch HOME menu, open System Settings. Scroll down to Bluetooth Audio, then select your device's name from the list of saved devices. Select Connect Device. Once connected, any audio that is played will be output through your Bluetooth device.

### **Do Bluetooth headphones work with the switch?**

It's time to toss that third-party adapter to the side — the Nintendo Switch finally supports Bluetooth headphones. That means your AirPods, Bose headphones or any other Bluetooth-enabled headsets can be paired directly to your Switch for hassle-free wireless audio while you battle Bowser or explore Hyrule on the go

### Why do Bluetooth headphones have two modes?

The first mode is for listening to higher-quality audio. The second mode is for both speaking through the microphone and listening to audio. When Bluetooth switches to the second mode, audio quality is reduced until the microphone is no longer in use.

### How long do Bluetooth headphones last?

With moderate to heavy use, the answer to the question of how long true wireless earbuds last is, that the lifespan of a wireless earbud is typically between one and two years. You can anticipate your earbuds to remain in good shape for two to three years if you treat them gently.



[Download The PDF Link: Content/Books/2023/04/Headset-w/Bluetooth-H5-Noise Cancelling PDF Headset-with-Dual-Mic-Noise-Cancelling-Video.mp4](#)