



comsol CMDL24D Universal Docking Station User Manual

[Home](#) » [comsol](#) » comsol CMDL24D Universal Docking Station User Manual 

Contents

- [1 comsol CMDL24D Universal Docking Station](#)
- [2 PORTS](#)
- [3 Maximum Resolutions](#)
- [4 Operation](#)
- [5 DisplayLink Drivers for MacOS](#)
- [6 Specifications](#)
- [7 In the Box](#)
- [8 Documents / Resources](#)
 - [8.1 References](#)
- [9 Related Posts](#)



comsol CMDL24D Universal Docking Station



Model: CMDL24D

Universal Docking Station with Dual HDMI and DisplayPort 4 x USB-A, 2 x USB-C, Gigabit Ethernet, Audio & AC Power

PORTS



	Port	Description
	DC Power Input	Connect the included 120W AC power supply to this port
	RJ45 Gigabit LAN	Connect a wired Gigabit Network with an Ethernet cable. The Green LED will illuminate to show a connection has been made with the network, a yellow LED illuminates when there is network activity
	HDMI Port 1	Connect your HDMI monitor to this port
	DisplayPort 1	Connect your DisplayPort monitor to this port
	HDMI Port 2	Connect your second HDMI monitor to this port
	DisplayPort 2	Connect your second DisplayPort monitor to this port
	2 x USB-A 3.0 Data Ports	Connect USB-A devices including keyboard/mouse, flash drives, a web cam, a printer or external storage devices to these high speed USB-A 3.0 ports at speeds up to 5Gbps
	USB-C Host Port	Connect the docking station to your host computer using this USB-C port. Use either the included USB-C to USB-C cable or the included USB-C to USB-C cable



	Port	Description
	USB-A 3.0 Data & Charge	Connect a USB-A device to this port with data transfer speeds up to 5 Gbps. This port can also be used to charge a phone using the BC1.2 charging specification
	USB-A 3.0 Data Port	Connect USB-A devices including keyboard/mouse, flash drives, a web cam, a printer or external storage devices to this high speed USB-A 3.0 port at speeds up to 5Gbps
	USB-C 3.1 Data & Charge	Connect a USB-C device to this port with data transfer speeds up to 5 Gbps. This port can also be used to charge a phone using the BC1.2 charging specification
	USB-C 3.1 Data	Connect USB-C devices including flash drives, a web cam or external storage devices to this high speed USB-C 3.1 port at speeds up to 5Gbps
	3.5mm Audio Socket	Connect your headphones, headset with microphone or speakers to this port
	Power Button	Press this button to turn the docking station On or Off
	Security Slot	Protect your investment and secure your dock using a K-Slot locking device

Maximum Resolutions

	Monitor 1	Monitor 2	Single 5K Monitor
HDMI + HDMI	3840 x 2160 @60Hz	3840 x 2160 @60Hz	
DisplayPort + DisplayPort	3840 x 2160 @60Hz	3840 x 2160 @60Hz	5120 x 2880 @60Hz
DisplayPort + HDMI	3840 x 2160 @60Hz	3840 x 2160 @60Hz	

Operation

Connect the included AC power supply to the rear of the docking station and plug the other end into a power outlet.

For computers with a USB-C port, using the included USB-C to USB-C cable, plug one end into a USB-C port on your computer and the other into the USB-C port on the docking station labelled with the computer icon

This universal docking station will also work with older computers equipped with only a USB-A port. The USB-A port must support USB3.0, also known as USB3.2 Gen 1. Connect the docking station to your computer using the included USB-C to USB-A cable. Plug one end into a USB-A port on your computer and the other into the USB-C port on the docking station labelled with the computer icon

Note: When connecting via a USB-A port, the docking station will not provide power to charge the laptop. You must charge your laptop using its own power supply.

Connect 1 or 2 monitors to any of the DisplayPort or HDMI Ports. Only two outputs are active at any one time. This dock supports HDMI + HDMI or DP + DP or HDMI + DP.

Note: macOS users see the “DisplayLink Drivers for macOS” section over the page.

- Using a single HDMI monitor, max resolution is 4K Ultra HD 3840 x 2160 @60Hz
- Using a single DisplayPort monitor, max resolution is 4K Ultra HD 3840 x 2160 @60Hz *
- Using 2 HDMI or DisplayPort monitors, the max resolution is 2 x 4K Ultra HD 3840 x 2160 @60Hz

Connect your USB-A and USB-C devices to the USB-A and USB-C ports on the front and back of the docking station such as USB flash drives, external storage devices, webcams or other USB peripherals. The maximum data transfer rate is 5Gbps.

You can also use the USB-A and USB-C ports on the front of the dock to charge your phone and other USB devices using the BC1.2 charging specification.

Connect an Ethernet network cable to the RJ45 Gigabit LAN port. This will connect your computer to a wired Ethernet network. The green LED indicates connection to a network. The yellow LED indicates network activity. Use either the SD or Micro SD slots on the front of the dock to access your photos, videos or other digital files. To listen to audio through speakers or headphones, or use a headset with microphone, connect to the 3.5mm audio socket on the front of the dock.

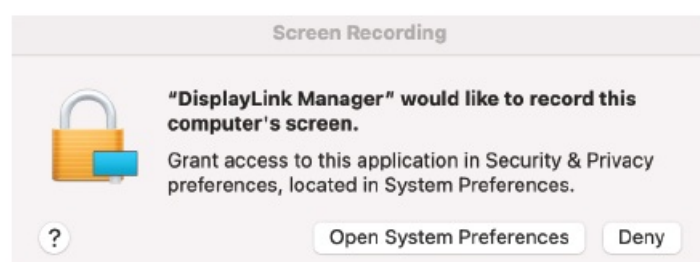
A single 5K DisplayPort monitor is supported when using 2 x DisplayPort cables

DisplayLink Drivers for MacOS

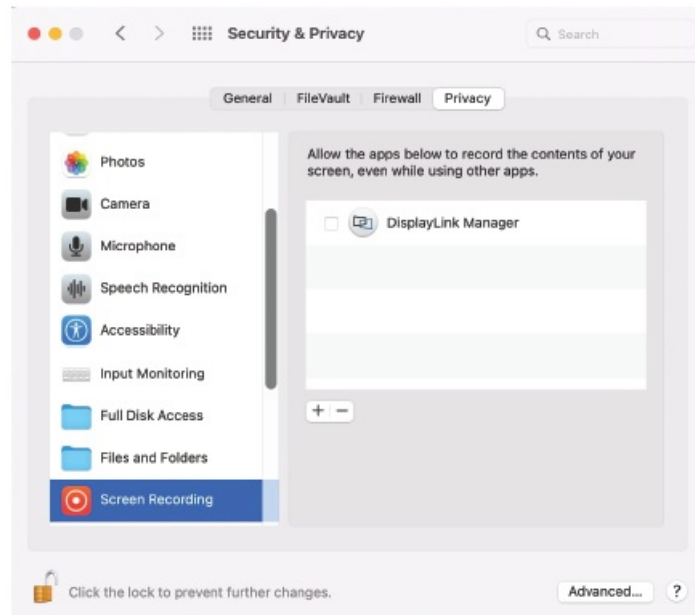
This docking station requires the host computer to have DisplayLink drivers installed to support external monitors. Windows and ChromeOS support DisplayLink natively and don't need additional drivers installed to run external monitors.

macOS users will need to install DisplayLink drivers to run external monitors. DisplayLink drivers are available for MacOS X 10.8 onwards. For optimum performance it is recommended to download and install the latest version of DisplayLink Manager (includes DisplayLink drivers) with support for macOS Catalina 10.15 onwards.

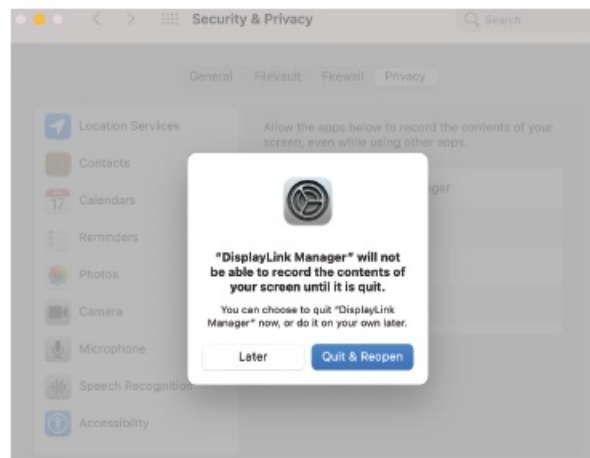
1. Visit [synaptics.com/products/displaylink-graphics](https://www.synaptics.com/products/displaylink-graphics) and select macOS from the Latest DisplayLink Drivers list
2. Download the latest version of “DisplayLink Manager”
3. After clicking “Download” and accepting the License double click the downloaded file and run the DisplayLink Installer Wizard
4. Follow the on screen instructions to complete the installation
5. Make sure your external monitors are connected to the multiport adapter via a HDMI cable
6. From the Notification Center (normally top right on your Mac) start the DisplayLink Manager for the first time by clicking this icon The DisplayLink Manager can also be found in the Applications folder
7. When you run the DisplayLink manager for the first time this box will This a necessary function of DisplayLink however no data is permanently recorded or exported. To proceed click “Open System Preferences”



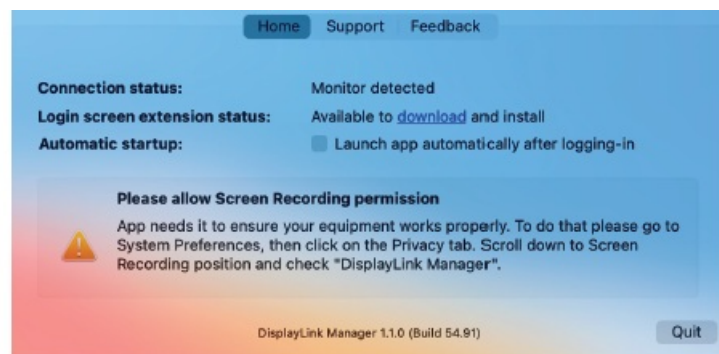
8. If the lock in the bottom left corner of the “Security & Privacy” window is locked, then click to unlock it and ensure that you check the box next to the DisplayLink Manager to enable Screen recording



9. When this message appears, click the “Quit & Reopen” button and your external monitors will display your desktop



10. To make the dock run DisplayLink automatically open the DisplayLink Manager app from the Notification Centre or Application folder and check the “Automatic startup” box



Specifications

- Connect two monitors, a keyboard & mouse, USB storage devices, a Gigabit network, headphones or speakers and other USB devices all via a single USB-C connection

- DisplayLink technology supports dual monitors in mirror or extended desktop mode for macOS, Windows and ChromeOS, including MacBooks with M1, M2 or Intel chips
- Included 120W power supply provides up to 100W of USB-C power to charge your laptop
- Supports dual 4K monitors at 3840 x 2160 @60Hz or a single 5K monitor at 5120 x 2880 @60Hz
- 2 x HDMI monitor ports
- 2 x DisplayPort monitor ports
- 4 x USB-A 0 and 2 x USB-C 3.1 data ports (5Gbps)
- 1 x RJ45 Gigabit Ethernet network port
- 1 x SD & 1 x Micro SD Card Reader Slot that supports SD, SDHC I/II/III and SDXC I/II/III at UHS-I high speeds
- 1 x 5mm audio port for headphones or speakers
- 1 x USB-C female port to connect to host computer
- 1 x Security Locking Slot
- **Dimensions:** 215 x 80 x 26mm
- **Weight:** 348g

In the Box

- 1 x CMDL24D Universal Docking Station
- 1 x 120W AC Power Adapter
- 1 x 1m USB-C to USB-C Cable
- 1 x 1m USB-C to USB-A Cable
- 1 x User Manual


USB-C is a trademark of USB Implementers Forum.

HDMI is a registered trademark of HDMI Licensing LLC in the United States and other countries. Windows is a registered trademark of Microsoft Corporation in the United States and other countries. Mac and MacBook & macOS are trademarks of Apple Inc. registered in the U.S. and other countries. Chromebook is a trademark of Google Inc.

www.mycomsol.com.au

Made in China

Documents / Resources

	<p>comsol CMDL24D Universal Docking Station [pdf] User Manual</p> <p>CMDL24D Universal Docking Station, CMDL24D, CMDL24D Docking Station, Universal Docking Station, Docking Station, Universal Docking, Universal Station, Station</p>
---	---

References

-  [myComsol - Stay Connected](#)
-  [DisplayLink | Synaptics](#)