



COMPUTHERM DPA20-6 Energy Efficient Circulation Pumps Instruction Manual

[Home](#) » [COMPUTHERM](#) » COMPUTHERM DPA20-6 Energy Efficient Circulation Pumps Instruction Manual 

COMPUTHERM DPA20-6 Energy Efficient Circulation Pumps Instruction Manual

Operating instructions



for **COMPUTHERM DPA20-6**
and **DPA25-6**
energy-efficient circulation
pumps

Contents

- 1 General informations
- 2 Parts of the pump
- 3 Type designation
- 4 Important warnings and safety recommendations
- 5 Installing and commissioning the pump
- 6 Changing the position of the electrical panel
- 7 Connecting the device to the heating network
- 8 Control panel
- 9 Selectable characteristic curves of the pump and their display
- 10 Night mode
- 11 Displaying errors
- 12 Solving possible errors
- 13 Mounting sizes
- 14 Technical data:
- 15 Documents / Resources
- 15.1 References

General informations

The **DPA** low-energy circulation pumps are designed for the circulation of water in one-pipe, two-pipe, radiator-based and underfloor heating systems. The permanent-magnet motor and the modern electronic control of the pump enables the pump to adapt its performance to the current needs of the heating system automatically. Because of this, the energy consumption of these pumps are significantly lower than the consumption of conventional pumps, and they are classified as Energy Efficiency Class A pumps.

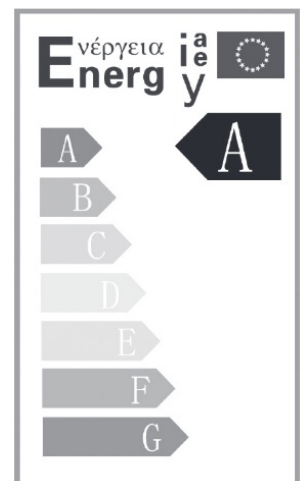
DPA pumps can be used for circulating clean, dilute, non- aggressive and non-explosive liquids that do not contain solid particles, fiber or mineral oils. In heating systems the water must comply with the relevant standards requirements for the pump to be usable.

Advantages of the device:

- Automatic, self -regulating mode
- Energy Saving: Automatic control of different pressure
- Comfort: Low noise level
- Security features: built -in electrical protection and heat protection
- User -friendly: Easy setup and operation

The built -in automatic adaptation function (AUTOADAPT) has been specifically designed for floor heating systems. The automatic adaptation function (factory setting) automatically adapts the pump output to the demand, i.e. the size of the system and the heating demand. The output is gradually adjusted over time. Optimum pump setting cannot be expected from the first day.

Parts of the pump



1. Suction connector
2. Pump housing
3. Pressure connector
4. Engine cover
5. Data plate
6. Venting screw
7. Control panel

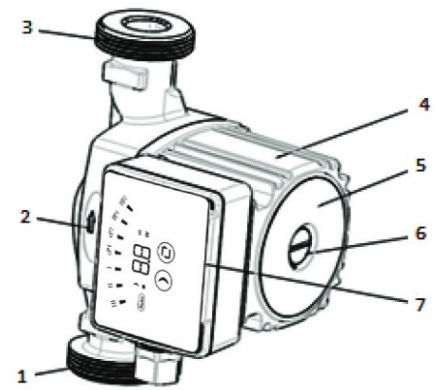
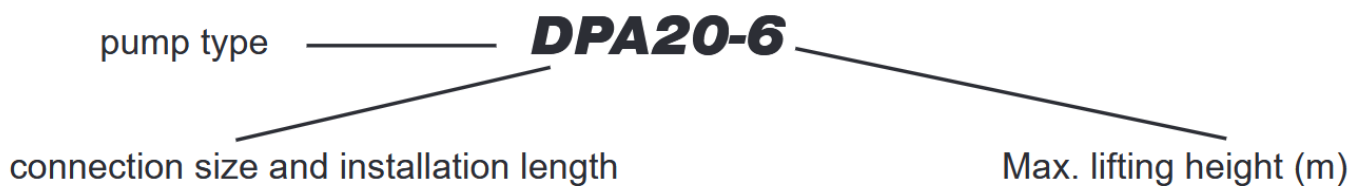


Figure 1.

Type designation



20: 1" connection size and 130 mm installation length

25: 1½" connection size and 180 mm installation length

Important warnings and safety recommendations

- Before using the device, study carefully the device's operating instructions and make sure to follow the instructions carefully.
- This device is designed for indoor use. Do not use in a wet, chemically aggressive or dusty environment, or in a place where it may be splashed by water, or where the ambient temperature may be below 0 °C or above 40 °C.
- The manufacturer is not responsible for any direct or indirect damage or loss of income that may occur during the use of the device.
- Make sure that the **COMPUTHERM DPA20-6/DPA25-6** circulation pump is disconnected from the power supply during the installation!
- The device must be installed, put into operation, and maintained by a competent person and the necessary safety regulations must be followed! If you do not have the necessary knowledge and qualifications, please contact an official service!
- Modifying the device involves the risk of electric shock or malfunction!
- Make sure that the pump housing is not externally insulated, as this can lead to damage to the pump.
- Do not operate the pump empty, without liquid!
- The circulated liquid can be of high pressure or high temperature. Note this when assembling the device to avoid injuries!

Installing and commissioning the pump

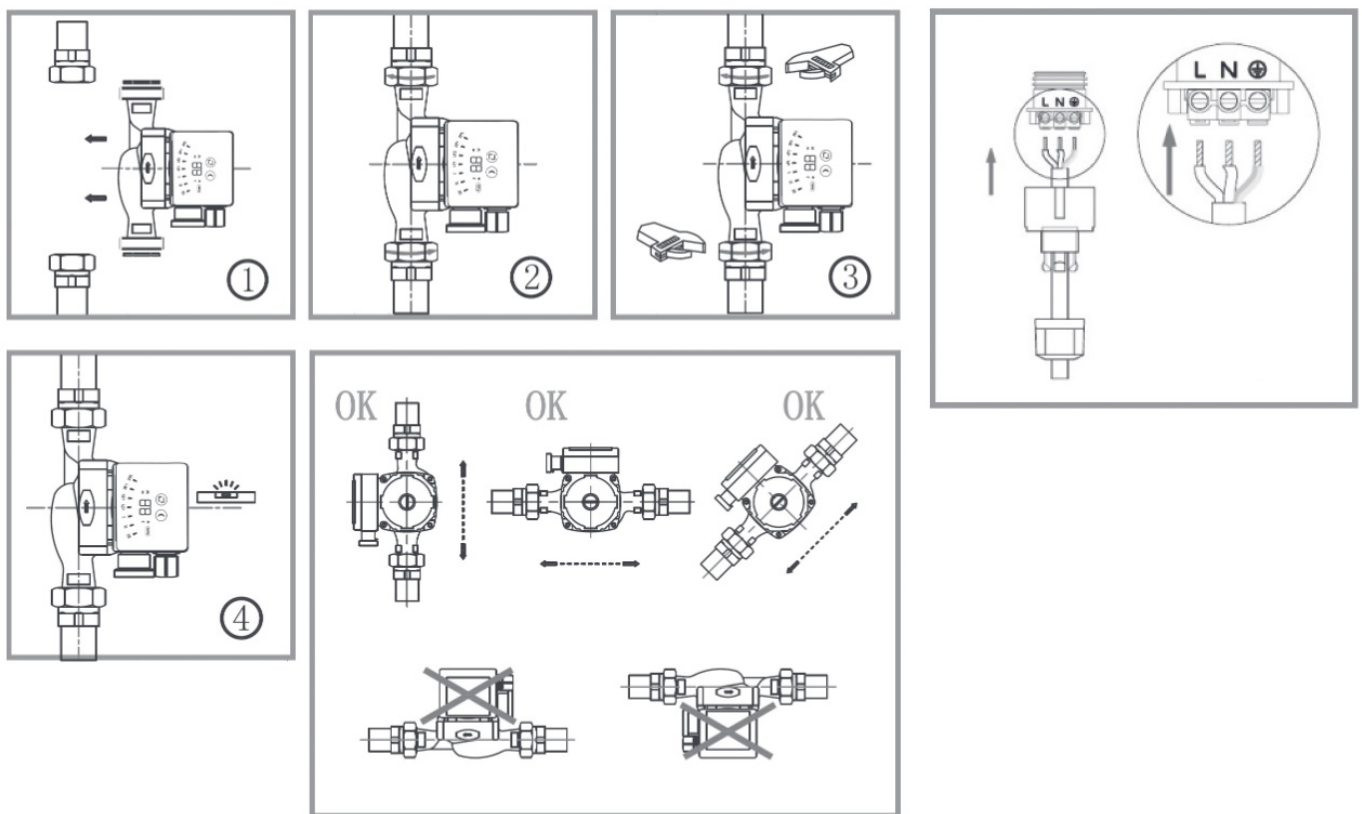


Figure 2.

Attention! When starting the pump, make sure that the system is filled with water, vented and the pressure of the suction nozzle reaches the minimum inlet pressure (see **Technical data**).

The pump can empty the remaining air on its own. To do this, switch it to level III for a few minutes when you turn it on, and the air will leave by itself. During this process, the pump may be louder than usual.

Changing the position of the electrical panel

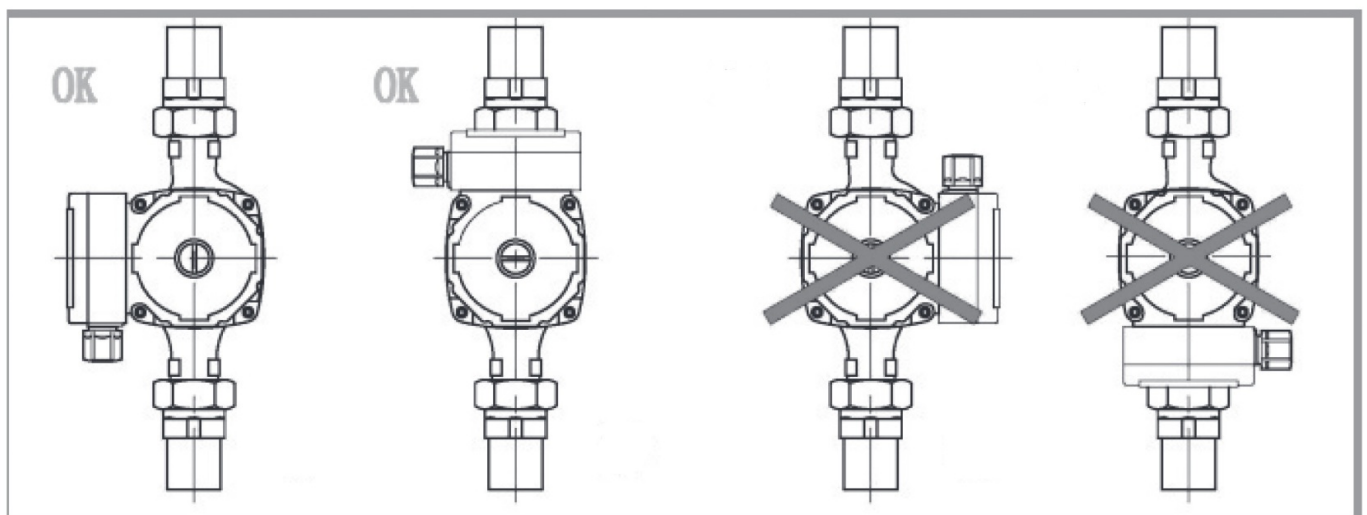
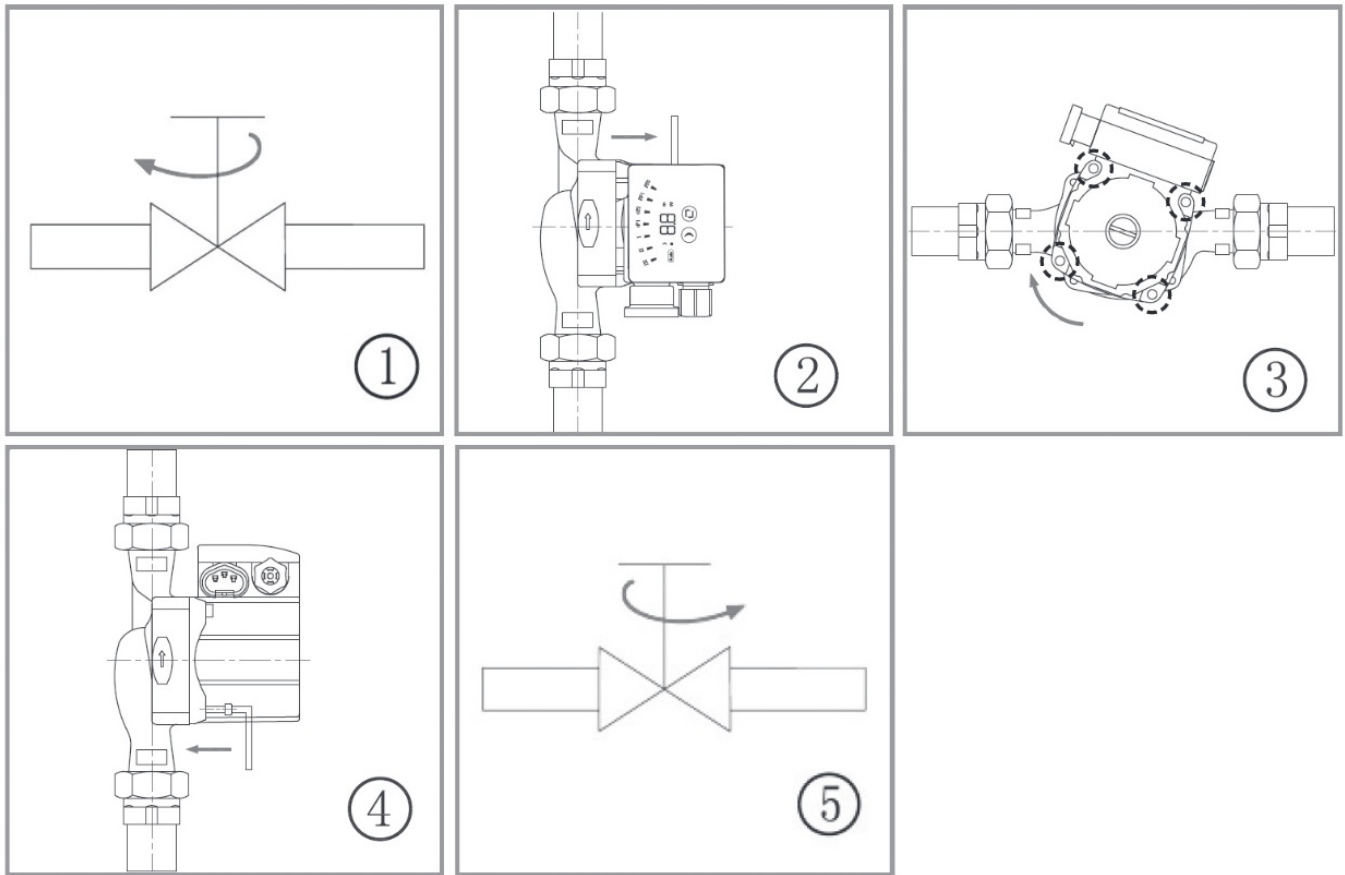


Figure 3.

The electrical panel of the pump can be rotated 90 degrees using the following steps:

1. Close the valves on the suction and discharge side and release the pressure.
2. Unscrew and remove the 4 screws securing the electric panel of the pump. (location is marked in image 3 of **Figure 4**).

3. Rotate the pump housing 90 degrees in the desired direction.
4. Screw back the 4 screws securing the electric panel of the pump.
5. Open the valves on the suction and pressure side.



Connecting the device to the heating network

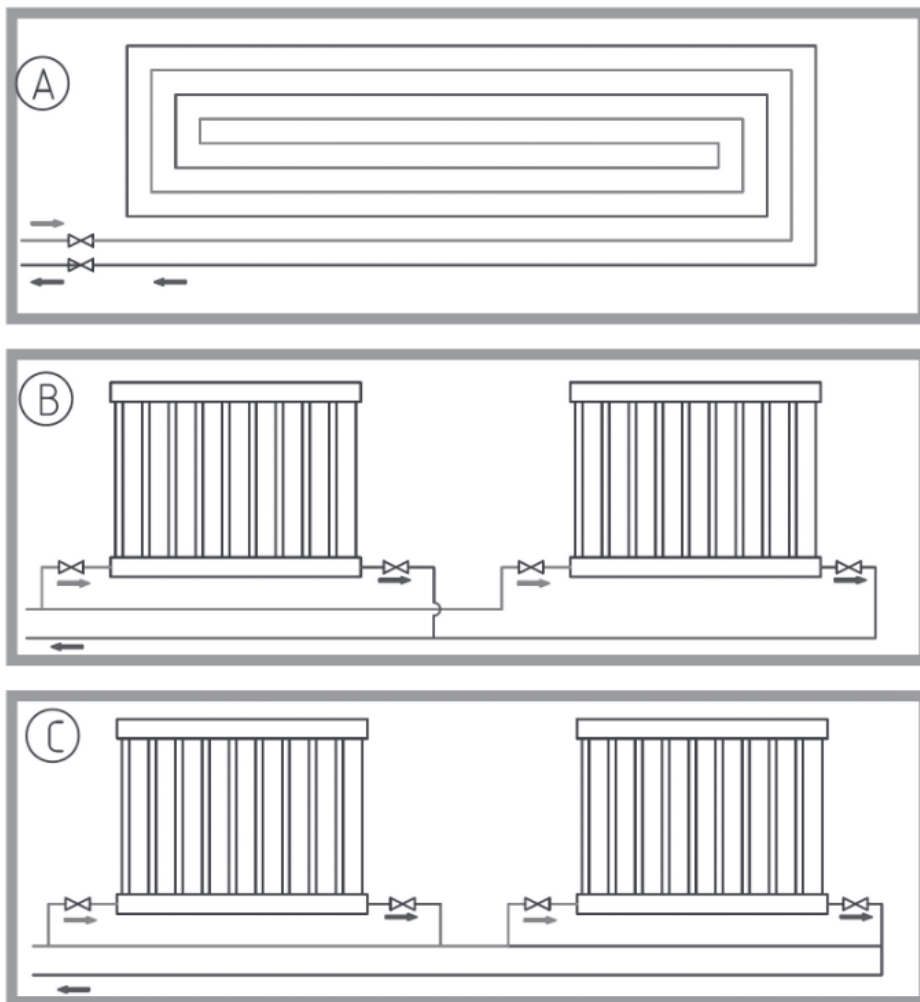


Figure 5.

Connecting	Heating system type	Setting pump mode	
		Recommended	Alternative option
A	floor heating	AUTO	cP1, cP2
B	Parallel connected heating system	AUTO	pp2
C	series connected heating system	pp1	pp2

Control panel

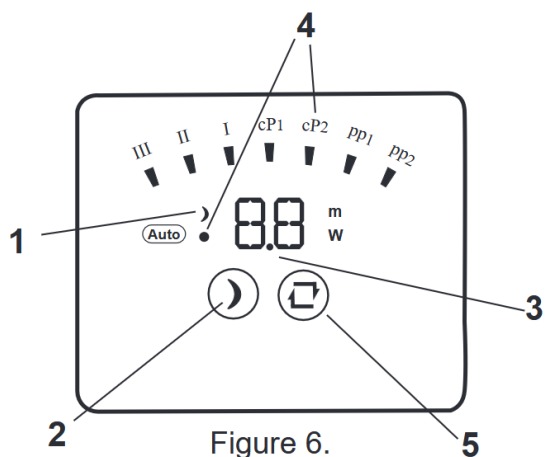


Figure 6.

Position	Designation
1	Night mode indicator light.
2	Night mode on/off button.
3	Display of current consumption (W).
4	Display of the 8 selectable levels.
5	Button to select the operating mode.

- The segment indicating the currently selected function is always lit on the display panel.
- By pressing the buttons, the pump switches to another operating function.

Selectable characteristic curves of the pump and their display

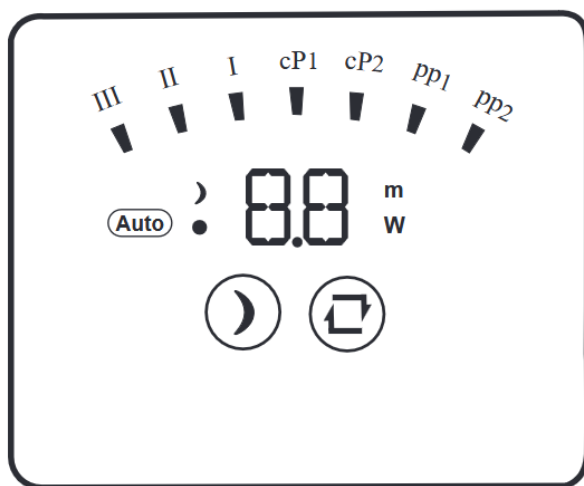


Figure 7.

Setting	Pump characteristic	Function
AUTO (default setting)	Automatic curve selection	In the automatic mode, the pump operates at a lower or higher power according to the current water demand.
I	Stage I.	In stage I, the pump operates at a constant speed according to the lowest curve.

II	Stage II.	In the II. stage the pump operates at a constant speed according to the medium curve.
III	Stage III.	In the III. stage, the pump operates at a constant speed according to the highest curve. Quick venting of the pump can be done in III. stage with short-term operation.
cP1	Low Constant-pressure curve	The operating point moves on the low constant pressure curve according to the need. The transport height remains constant regardless of the need.
cP2	High constant-pressure curve	The operating point moves on the low constant pressure curve according to the need. The transport height remains constant regardless of the need.
pp1	Low proportional-pressure curve	The operating point moves up or down on the low proportional pressure curve according to the heating demand. The delivery height increases when the need increases, decreases when the need decreases.
pp2	High proportional-pressure curve	The operating point moves up or down on the low proportional pressure curve according to the heating demand. The delivery height increases when the need increases, decreases when the need decreases.

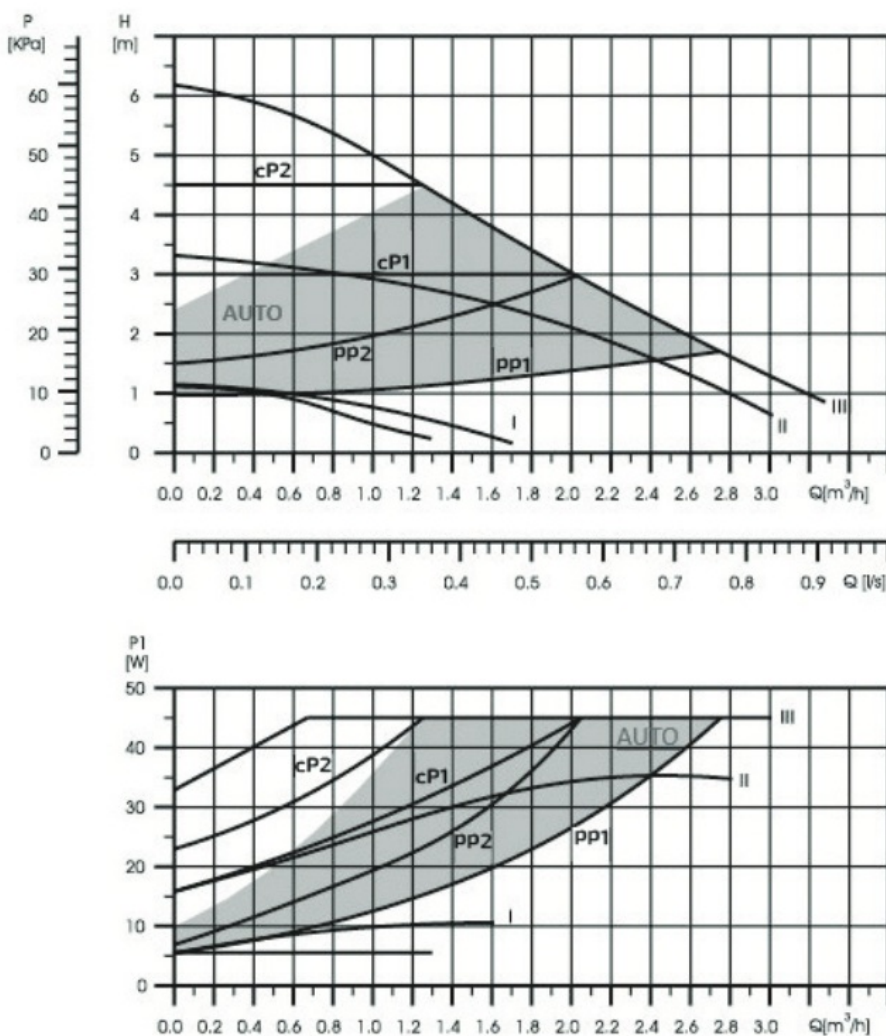


Figure 8.

Night mode

The **COMPUTHERM DPA20-6** and **DPA25-6** heating circulation pumps can also be operated in Night mode, with which significant energy savings can be achieved. Night mode can be used if the pump is installed in the forward branch of the heating system. When the water temperature sensed by the pump drops by more than 10 °C within 2 hours, the pump automatically switches to the energy-saving mode, by stage I. characteristic curve. When the temperature is rises at least by 10 °C (regardless of the duration), the pump will return to the normal operating mode that was selected before the energy saving mode was activated.

Attention! If the power supply to the pump has been cut off for some time, the Night mode must be reactivated!

Attention! If the pump is installed in the I., II. or III. use it in stage, then the night mode cannot be activated!

To activate Night Mode, press the Night Mode On/Off button on the control panel. Then the button on the control panel will light up until you turn off the function by pressing it again.

Displaying errors

In the part of the pump's control panel marked with number 2 (**Figure 2**), instead of the consumption, the error code detected automatically by the pump is displayed. Unplug the device until the error has been eliminated!

Error code	Description
E1	Overvoltage
E2	Blocked rotor
E3	One circuit is interrupted or there is no electricity.
E4	If the voltage exceeds the maximum voltage that can be tolerated by the controller, or the power supply input voltage is lower than the minimum voltage of the controller, the controller stops and the error protection comes into action.
E5	If the power amplifier output module is abnormally hot, the set temperature exceeds alarms and stops.
E6	Water deficiency

Solving possible errors

Error type	Control panel	Possibility sources of error	Troubleshooting
1. The pump not operates.	The control panel does not lights up.	The circuit breaker tripped	Reclosing the circuit breaker.
		A fuse blown.	Replacing the fuse.
	The control panel lights up, but the pump does not operates.	The pump has failed.	Replacing the pump.
		The supply voltage is not correct.	Checking the supply voltage.
2. Noise in the system.	Everything works as intended.	The pump is stuck.	Removal of impurities.
		There is air in the system.	Venting the system.
3. The pump is noisy.	Everything works as intended.	The water flow is too high.	Reduction of transport height.
		There is air in the pump.	Operating the pump, it vents itself over time.
4. Unsatisfactory performance.	Everything works as intended.	Low influence pressure.	Increasing influence pressure.
		Pump performance too short.	Increasing transport height.

Mounting sizes

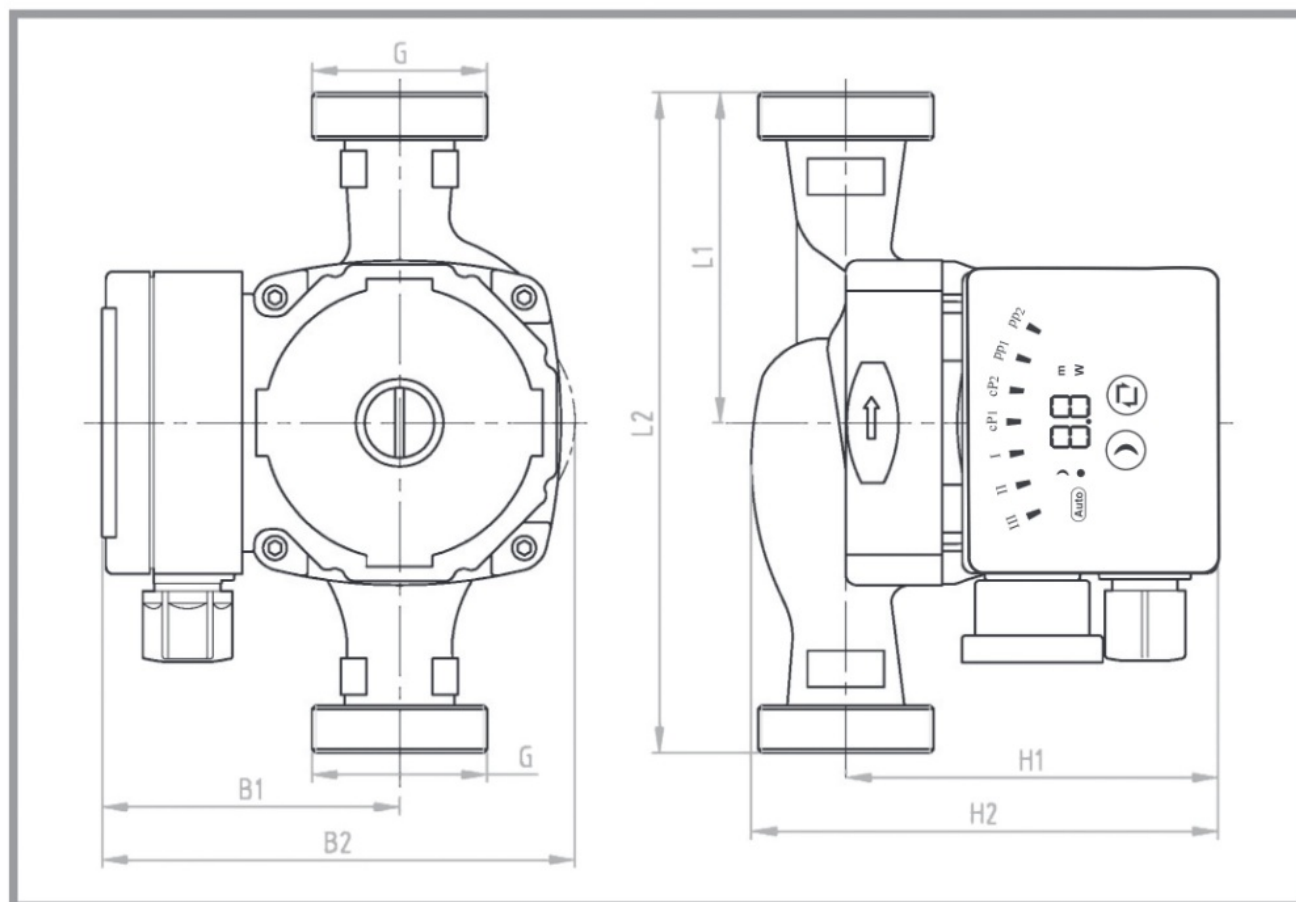


Figure 9.

Product name	Measurements (mm)						
	L1	L2	B1	B2	H1	H2	G
DPA20-6	65	130	79	128	101,5	129	1"
DPA25-6	90	180	79	128	101,5	129	1½"

Technical data:

Working voltage: 230 V AC 60/50 Hz

Max. medium temperature: +10 – +100 °C

Max. working pressure: 10 bar

Max free air temperature: 0 – 40 °C

Operating humidity: max. 95%

Max. head: 6 m

Max. flow: 3.3 m³/h (DPA20-6), 3.5 m³/h (DPA25-6)

Nominal width: G 1" (DPA20-6) ill. 1½" (DPA25-6)

Port to port length: 130 mm (DPA20-6) ill. 180 mm (DPA25-6)

Motor performance: 5 – 45 W

Max. current: 0.32 A

Energy label: „A”

Protection against environmental impacts: IP42

Insulation label: F

Material of the motor: cast iron

Type of the motor: permanent magnetic

Material of the runner: PES

Noise level: max. 45 dB

EEl: ≤ 0.23

Suction connector pressure	
Liquid temperature	Minimum inlet pressure
≤ +85 °C	0,05 bar
≤ +90 °C	0,28 bar
≤ +110 °C	1,00 bar

In order to avoid condensation in the junction box and the motor, the recirculated liquid temperature must always be higher than the environment temperature.

Environment temperature	Circulated liquid temperature	
	Min	Max
0 °C	2 °C	110 °C
10 °C	10 °C	110 °C
20 °C	20 °C	110 °C
30 °C	30 °C	110 °C
35 °C	35 °C	90 °C
40 °C	40 °C	70 °C

The **COMPUTHERM DPA20-6/DPA25-6** type pump complies with the requirements of directives EMC 2014/30/EU, LVD 2014/30/EU and RoHS 2011/65/EU.



<https://computherm.info/en>

Manufacturer: QUANTRAX Kft.

Fülemüle u. 34., Szeged, H-6726, Hungary


Phone: +36 62 424 133 • Fax: +36 62 424 672

E-mail: iroda@quantrax.hu

Web: www.quantrax.hu • www.computherm.info

Copyright © 2024 Quantrax Ltd. All rights reserved.

Documents / Resources

<p>Operating instructions</p>  <p>for COMPUTHERM DPA20-6 and DPA25-6 energy-efficient circulation pumps</p>	<p>COMPUTHERM DPA20-6 Energy Efficient Circulation Pumps [pdf] Instruction Manual DPA20-6, DPA25-6, DPA20-6 Energy Efficient Circulation Pumps, DPA20-6, Energy Efficient Cir- culation Pumps, Efficient Circulation Pumps, Circulation Pumps, Pumps</p>
--	---

References

- [User Manual](#)

[Manuals+](#), [Privacy Policy](#)

This website is an independent publication and is neither affiliated with nor endorsed by any of the trademark owners. The "Bluetooth®" word mark and logos are registered trademarks owned by Bluetooth SIG, Inc. The "Wi-Fi®" word mark and logos are registered trademarks owned by the Wi-Fi Alliance. Any use of these marks on this website does not imply any affiliation with or endorsement.