


CommScope WB-K110-B Typical Waveguide Instruction Manual

[Home](#) » [CommScope](#) » CommScope WB-K110-B Typical Waveguide Instruction Manual 

COMMScope®

WB-K110-B Typical Waveguide
Instruction Manual

Contents

1 WB-K110-B Typical Waveguide

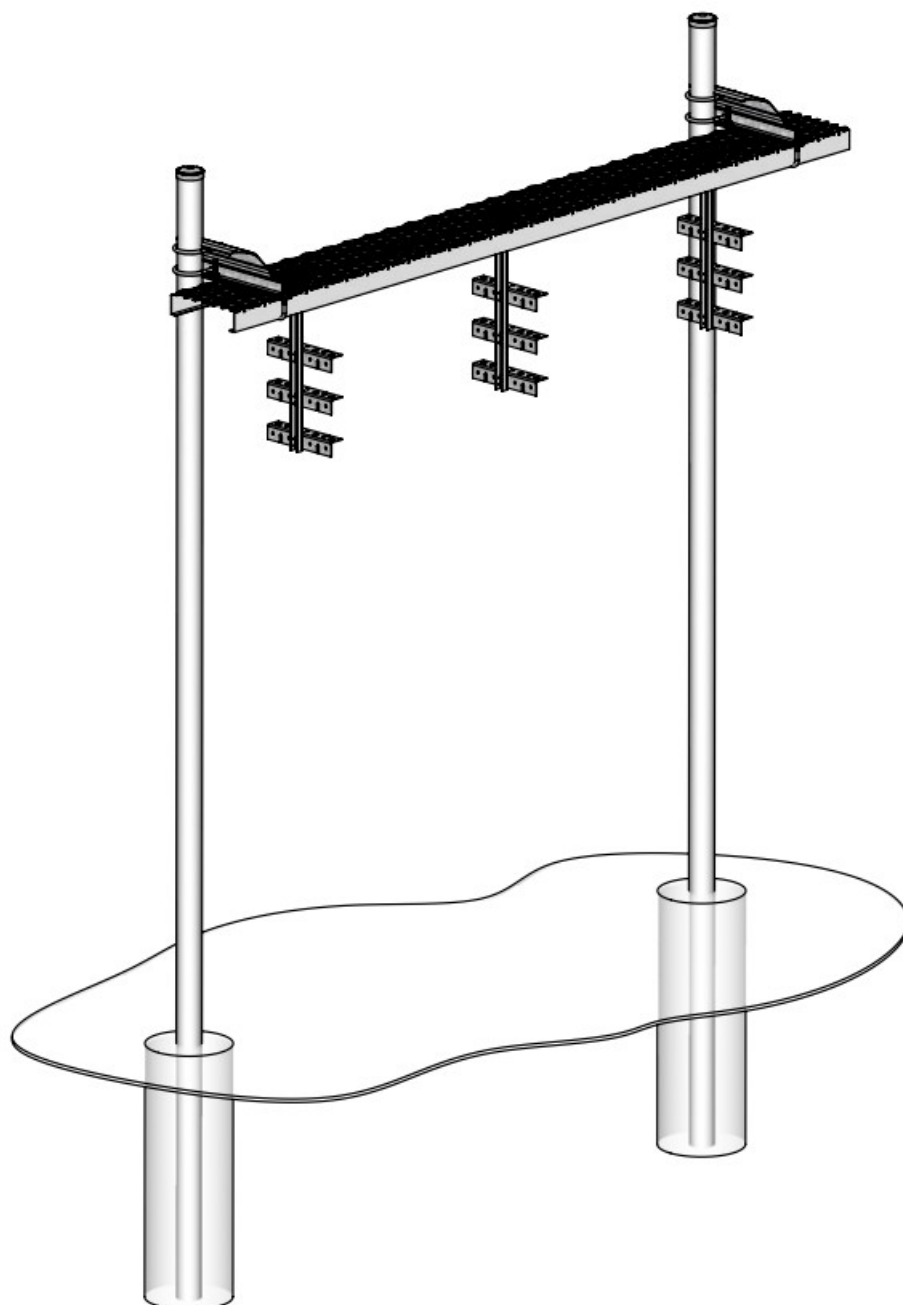
2 INSTALL PIPES AT SITE

3 Documents / Resources


3.1 References

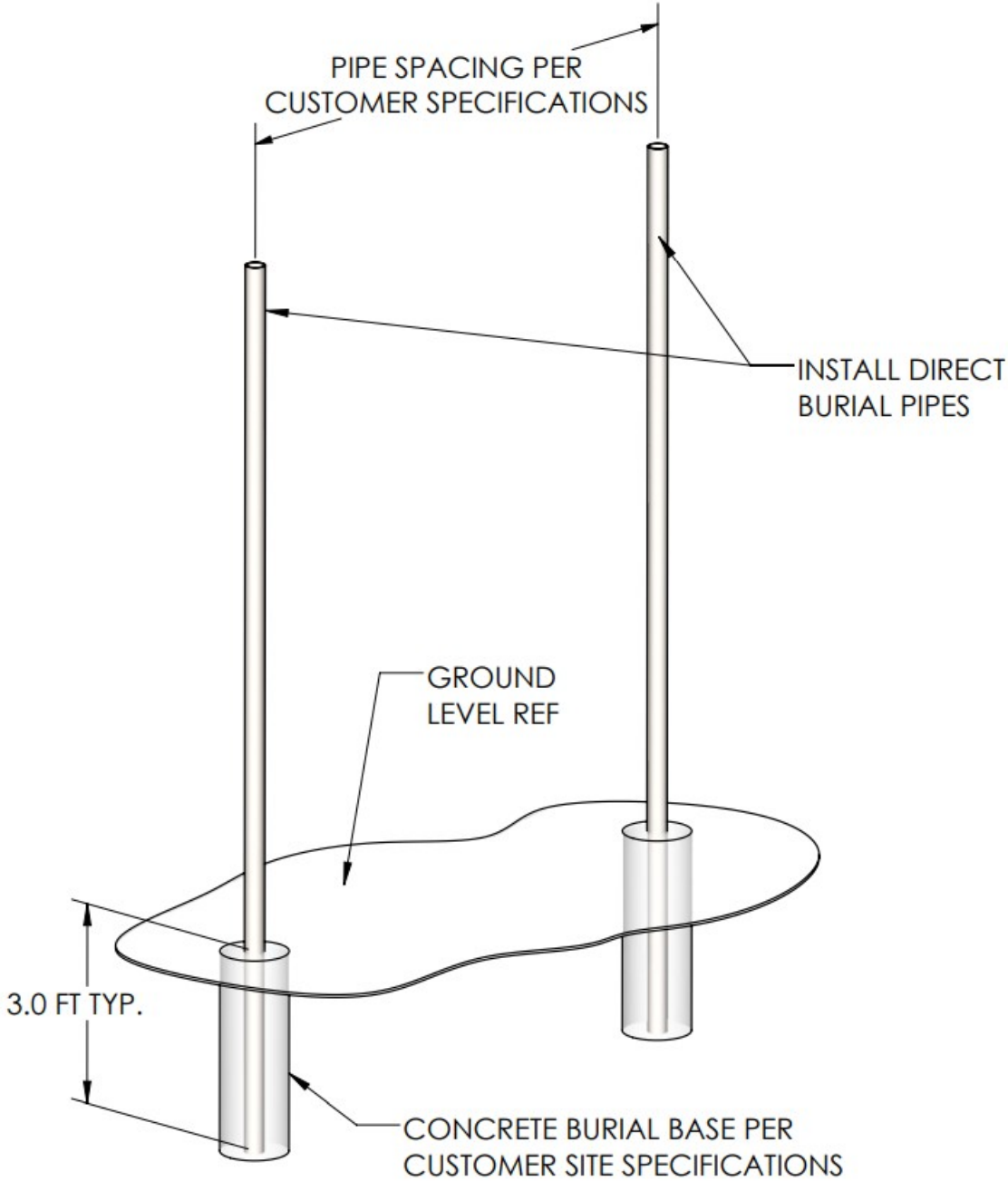
WB-K110-B Typical Waveguide

REVISIONS			
REV.	DESCRIPTION	BY	DATE
A	INITIAL RELEASE	MJP	7/14/2023

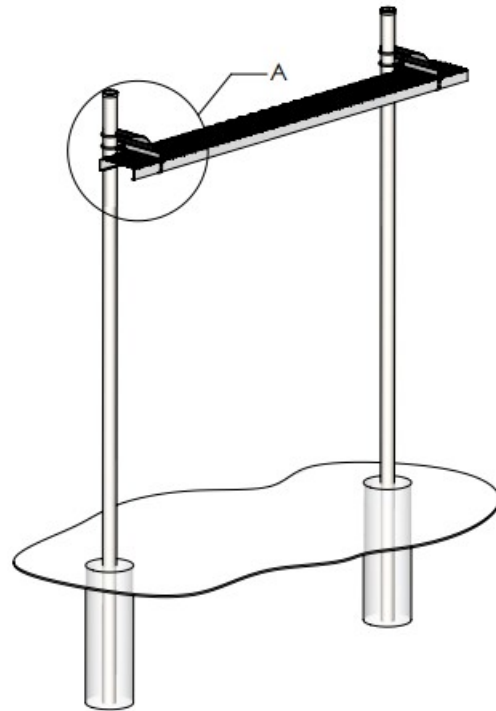
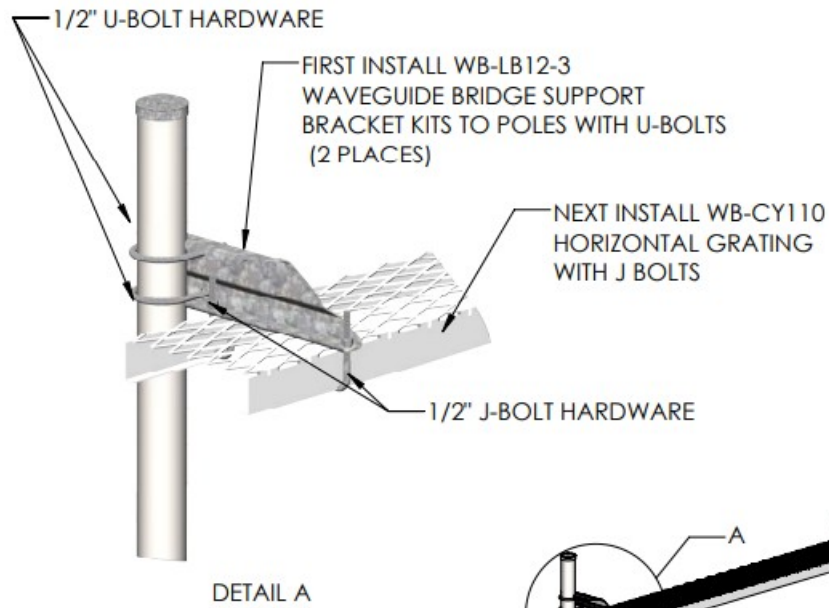


TYPICAL WB-K110-B WAVEGUIDE BRIDGE INSTALLATION

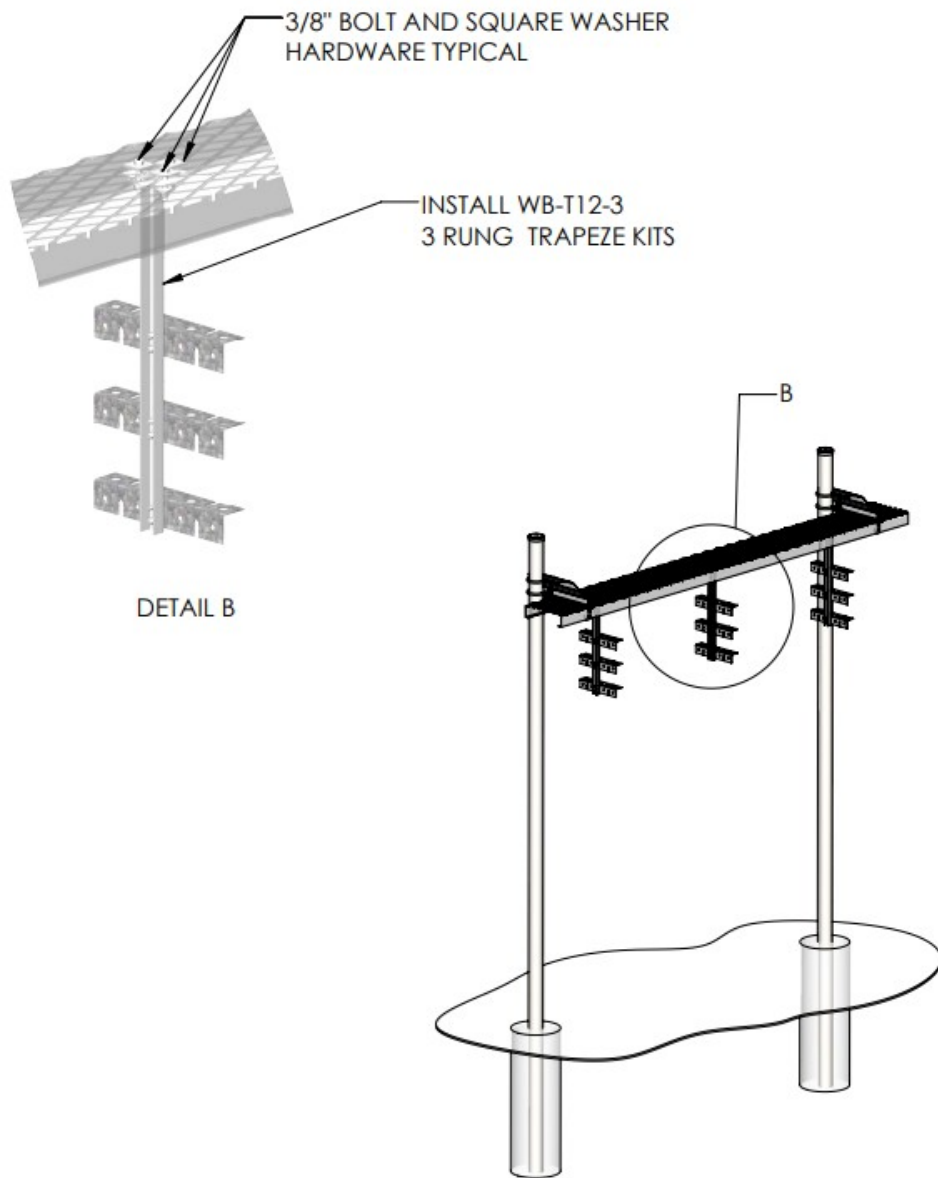
These drawings and specifications are the proprietary property of CommScope Inc. and may be used only for the specific purpose authorized in writing by CommScope Inc.	DRAWN BY: MJP	SHEET:	PART NUMBER: WB-K 1 10-B INSTALLATION LAYOUT
	CHECKED BY:	SCALE:	DESCRIPTION:
ALL DIMENSIONS ARE IN INCHES U.O.S. TOLERANCES UNLESS OTHERWISE SPECIFIED: .x = + .12 .XX = ± .06 .XXX = ± .031 ANGLES ±2° FRACTIONS ±1/32 REMOVE BURRS AND BREAK EDGES .005	DATE:	MATERIAL:	DRAWING TYPE:
	REVISION : A	FINISH:	
DO NOT SCALE THIS PRINT			



INSTALL PIPES AT SITE



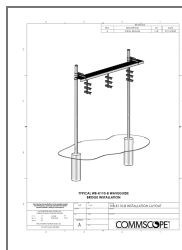
INSTALL HORIZONTAL SUPPORT BRACKETS AND GRATING



INSTALL 3 RUNG TRAPEZE KITS

COMMScope®

Documents / Resources



[CommScope WB-K110-B Typical Waveguide](#) [pdf] Instruction Manual
WB-K110-B Typical Waveguide, WB-K110-B, Typical Waveguide, Waveguide

References

- [User Manual](#)

