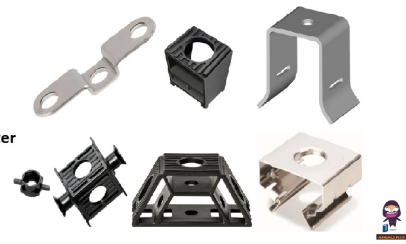


COMMSCOPE SA,
4C 4-Way Snap-in Style
Hanger Stand-off Adapter



COMMSCOPE SA,4C 4-Way Snap-in Style Hanger Stand-off Adapter Installation Guide

[Home](#) » [CommScope](#) » COMMSCOPE SA,4C 4-Way Snap-in Style Hanger Stand-off Adapter Installation Guide

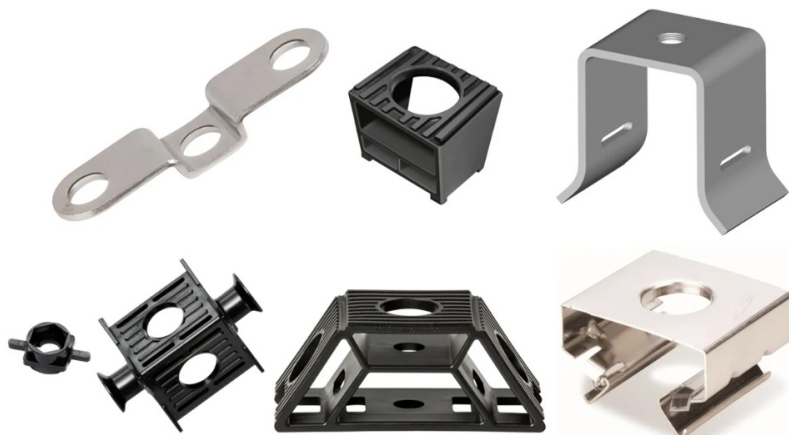


Contents

- [1 COMMSCOPE SA,4C 4-Way Snap-in Style Hanger Stand-off Adapter](#)
- [2 Specifications:](#)
- [3 Product Usage Instructions](#)
- [4 Mounting Options:](#)
- [5 Additional CommScope Materials:](#)
- [6 Frequently Asked Questions \(FAQ\):](#)
- [7 Documents / Resources](#)
 - [7.1 References](#)
- [8 Related Posts](#)

COMMSCOPE®

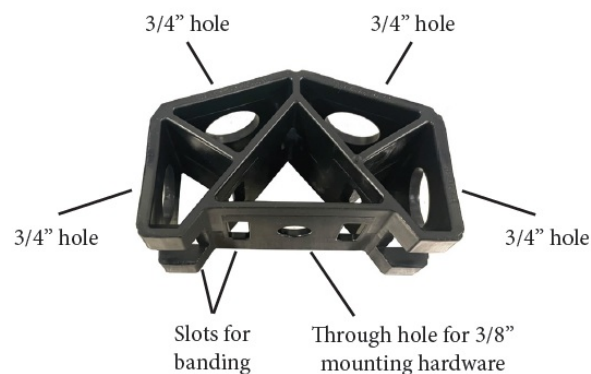
COMMSCOPE SA,4C 4-Way Snap-in Style Hanger Stand-off Adapter



Specifications:

- Material: Metal
- Size: 4-way adapter
- Mounting Hole Size: 3/4 inch
- Mounting Hardware Size: 3/8 inch
- Maximum Hanger Loading: Twelve 4-17 mm hangers or eight 26-42 mm hangers

Product Usage Instructions



Banding Installation:

Insert the banding through the desired slots on the 4-way adapter. Use the outside slots for mounting on large diameter pipes and poles, and the inside slots for smaller diameters.

Securing the Adapter:

Tighten the banding to securely attach the 4-way adapter to the round member. Cut off any excess strap tail for a clean finish.

1. Insert banding through desired slots. Use outside slots for mounting on large diameter pipes and poles. Inside slots for small diameters.



2. Tighten banding to secure 4-way adapter tightly to round member. Cut off excess strap tail.



3. Configuration showing adapter securely attached to round member. Maximum hanger loading is twelve 4-17 mm hangers or eight 26-42 mm hangers.



1. 4-way adapter can also be mounted to tower angle and standoff adapters with 3/8" hardware. Same maximum hanger loading applies.



Additional CommScope Materials	
Part Number	Description
CB-12-16LH	Heat-stabilized weather resistant acetal cable banding, 1/2 in x 16 in length
CB-12-27LH	Heat-stabilized weather resistant acetal cable banding, 1/2 in x 27 in length
CB-12-50	Cable banding, 1/2 inch X 50 foot reel
CB-LH-25	Locking heads for cable banding number CB-12-50
243684	Angle adapter
SSH-411	4.0 mm to 11.0 mm cable hangers – PIM Free
SSH-1117	11.0 mm to 17.0 mm cable hangers – PIM Free
SSH-2630	26.0 mm to 30.0 mm cable hangers – PIM Free
SSH-3642	36.0 mm to 42.0 mm cable hangers – PIM Free

Mounting Options:

Option 1: Attach the adapter to a round member as shown in the configuration. Ensure a tight fit for stability. The maximum hanger loading capacity varies based on the size of hangers used.

Option 2: The 4-way adapter can also be mounted to tower angle and standoff adapters using 3/8 hardware. The

same maximum hanger loading capacity applies in this configuration.

Additional CommScope Materials:

For related products and accessories, refer to the following part numbers:

- CB-12-16LH
- CB-12-27LH
- CB-12-50
- CB-LH-25
- 243684
- SSH-411
- SSH-1117
- SSH-2630
- SSH-3642

Contact Information:

CommScope 3642 E US Highway 70, Claremont, NC 28610 USA

Technical Support: +1 888 297 6433

(Toll-Free US and Canada) or +1 828 323 4220 (local)

Website: www.commscope.com/wisupport

Frequently Asked Questions (FAQ):


Q: What is the maximum hanger loading capacity for the 4-way adapter?

A: The maximum hanger loading capacity is twelve 4-17 mm hangers or eight 26-42 mm hangers.



Q: Can the 4-way adapter be mounted on tower angle and standoff adapters?

A: Yes, the 4-way adapter can also be mounted on tower angle and standoff adapters using 3/8 hardware. The same maximum hanger loading capacity applies in this configuration.

Documents / Resources

	<p>COMMScope SA,4C 4-Way Snap-in Style Hanger Stand-off Adapter [pdf] Installation Guide</p> <p>SA-4C, CB-12-16LH, CB-12-27LH, CB-12-50, CB-LH-25, SSH-411, SSH-1117, SSH-2630, SSH-3642, SA, 4C 4-Way Snap-in Style Hanger Stand-off Adapter, SA 4C 4-Way Snap-in Style Hanger Stand-off Adapter, SA 4C, 4-Way, Snap-in Style Adapter, Hanger Style Adapter, Stand-off Adapter</p>
---	--

References

-  [CommScope | now meets next](#)
-  [Wireless Support](#)
- [User Manual](#)

Manuals+. Privacy Policy

This website is an independent publication and is neither affiliated with nor endorsed by any of the trademark owners. The "Bluetooth®" word mark and logos are registered trademarks owned by Bluetooth SIG, Inc. The "Wi-Fi®" word mark and logos are registered trademarks owned by the Wi-Fi Alliance. Any use of these marks on this website does not imply any affiliation with or endorsement.