


COMMSCOPE RR-FA2-A Fast Access Rru Mount



COMMSCOPE RR-FA2-A Fast Access Rru Mount Installation Guide

[Home](#) » [CommScope](#) » COMMSCOPE RR-FA2-A Fast Access Rru Mount Installation Guide 

Contents

- [1 COMMSCOPE RR-FA2-A Fast Access Rru Mount](#)
- [2 Specifications](#)
- [3 Product Usage Instructions](#)
- [4 FAQ](#)
- [5 Parts](#)
- [6 Dimension](#)
- [7 Installation Instruction](#)
- [8 Documents / Resources](#)
 - [8.1 References](#)

COMMSCOPE

COMMSCOPE RR-FA2-A Fast Access Rru Mount



Specifications

- **Name:** Fast Access RRU Mount
- **Dimensions:** Height 4.0"[101.6], Length 18.0"[457.2], Width 13.0"[330.2]
- **Material:** Steel
- **Finish:** Galvanized
- **Weight:** Front Bracket – 4.18 lbs, RRU Hanger – 3.97 lbs, Rear Bracket – 3.10 lbs

Product Usage Instructions

1. Pre-Assembly:

Preassemble hanger brackets and RRUs with items 4 & 5 loose. Slide the hanger into position and then tighten bolts for installation.

2. Installation:

Torque bolts to 60 ft-lbs after installation.

3. Mounting Specifications:

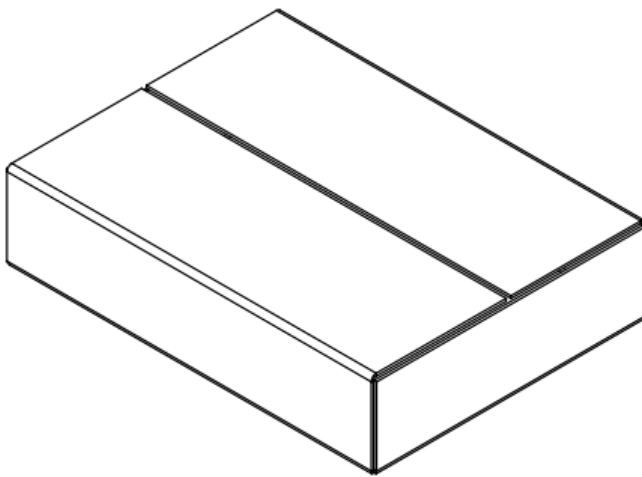
- For poles up to 5.6 inches in diameter.

- For 90-degree angles up to 4.5 inches.
- For 60-degree angles up to 6.0 inches.

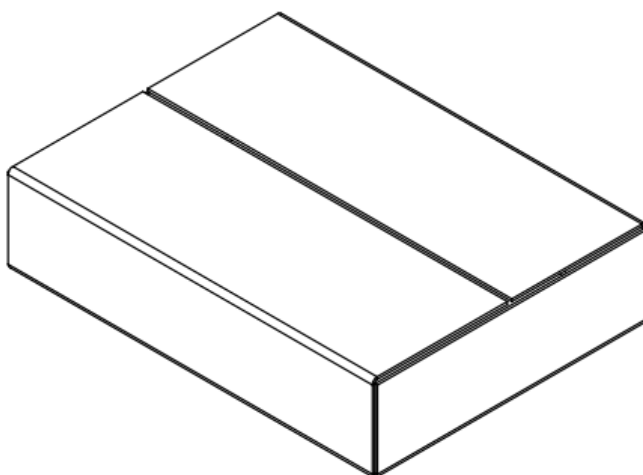
FAQ

- **Q: What is the maximum torque required for bolt tightening during installation?**
 - A: The maximum torque required for bolt tightening during installation is 60 ft-lbs.
- **Q: What are the dimensions of the Fast Access RRU Mount?**
 - A: The dimensions of the Fast Access RRU Mount are Height 4.0"[101.6], Length 18.0"[457.2], Width 13.0"[330.2].

Package

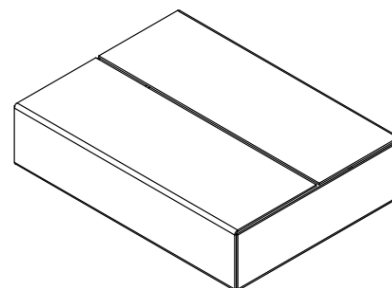
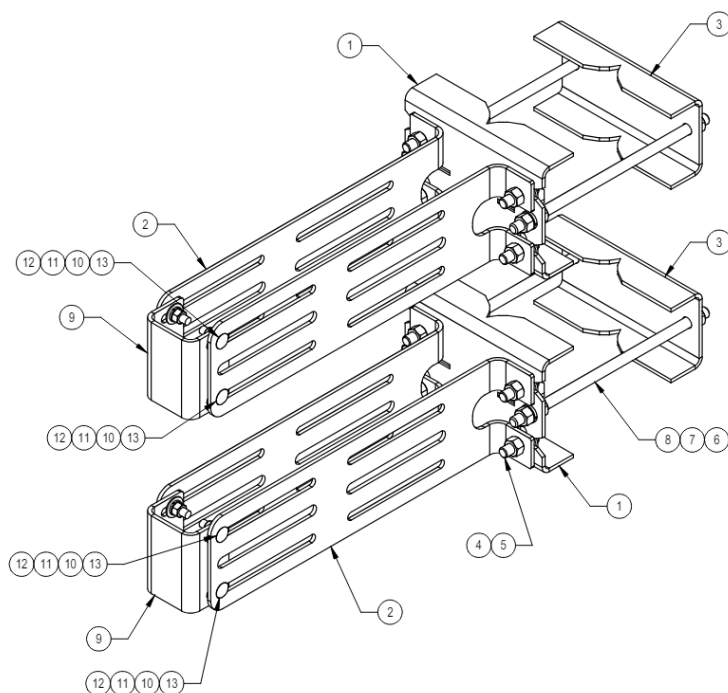


PACKAGE #1: RR-FA-2



PACKAGE #2: 860677769-001

Parts



PACKAGE #1: RR-FA-2

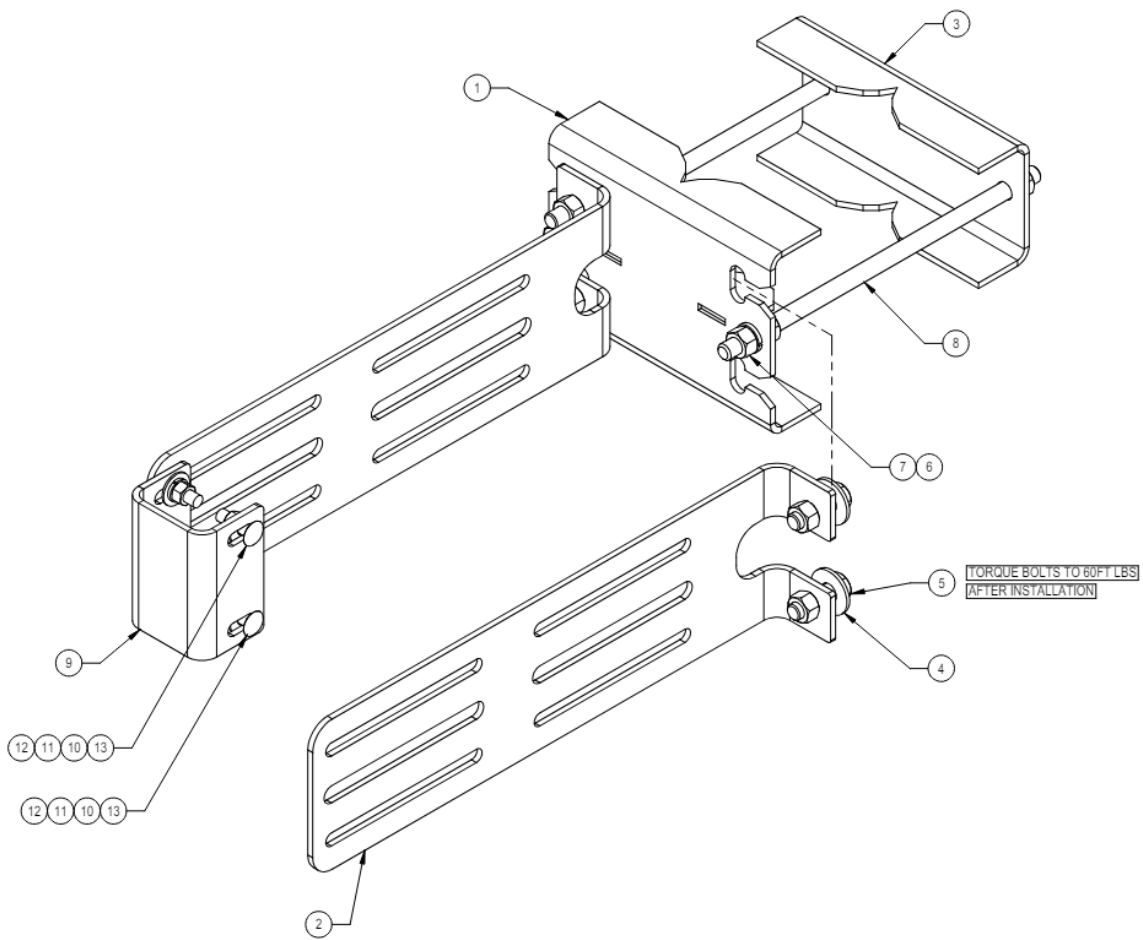
RR-FA-2 – FAST ACCESS RRU MOUNT

COMPONENT PART NUMBERS PROVIDED FOR ASSEMBLY PURPOSES; INDIVIDUAL COMPONENTS MAY BE SHIPPED AS PARTS WITHIN AN INCLUDED KIT

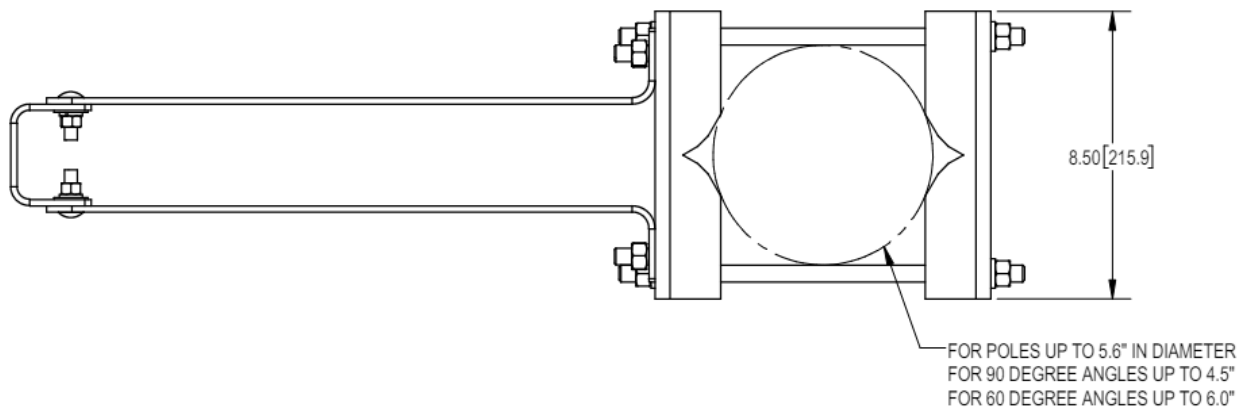
ITEM	PART NO.	DESCRIPTION	QTY.	WEIGHT	NOTE NO.
1	MTC378912	WELDED FRONT BRACKET	2	4.18 LBS	
2	MTC378909	RRU HANGER	4	3.97 LBS	
3	MTC378903	REAR BRACKET	2	3.10 LBS	
4	GWF-04	1/2" GALV FLAT WASHER	8	0.04 LBS	
5	GB-04145	1/2" X 1-1/2" GALV BOLT KIT	8	0.13 LBS	
6	GWL-04	1/2" GALV LOCK WASHER	12	0.01 LBS	
7	HNUT 0.5000-13-D-N		12		
8	MT-379	1/2" X 12" GALV THREADED ROD	4	0.66 LBS	
9	RRFA-0001-00	BRACKET, RRU MOUNT SMALL STABILIZER	2	1.46 LBS	
10	GWF-03	3/8" GALV FLAT WASHER	8	0.01 LBS	
11	GWL-03	3/8" GALV LOCK WASHER	8	0.01 LBS	
12	HNUT 0.3750-16-D-N		8		
13	MTC8196	3/8 X 1-1/4" CARRIAGE BOLT	8	0.052 LBS	

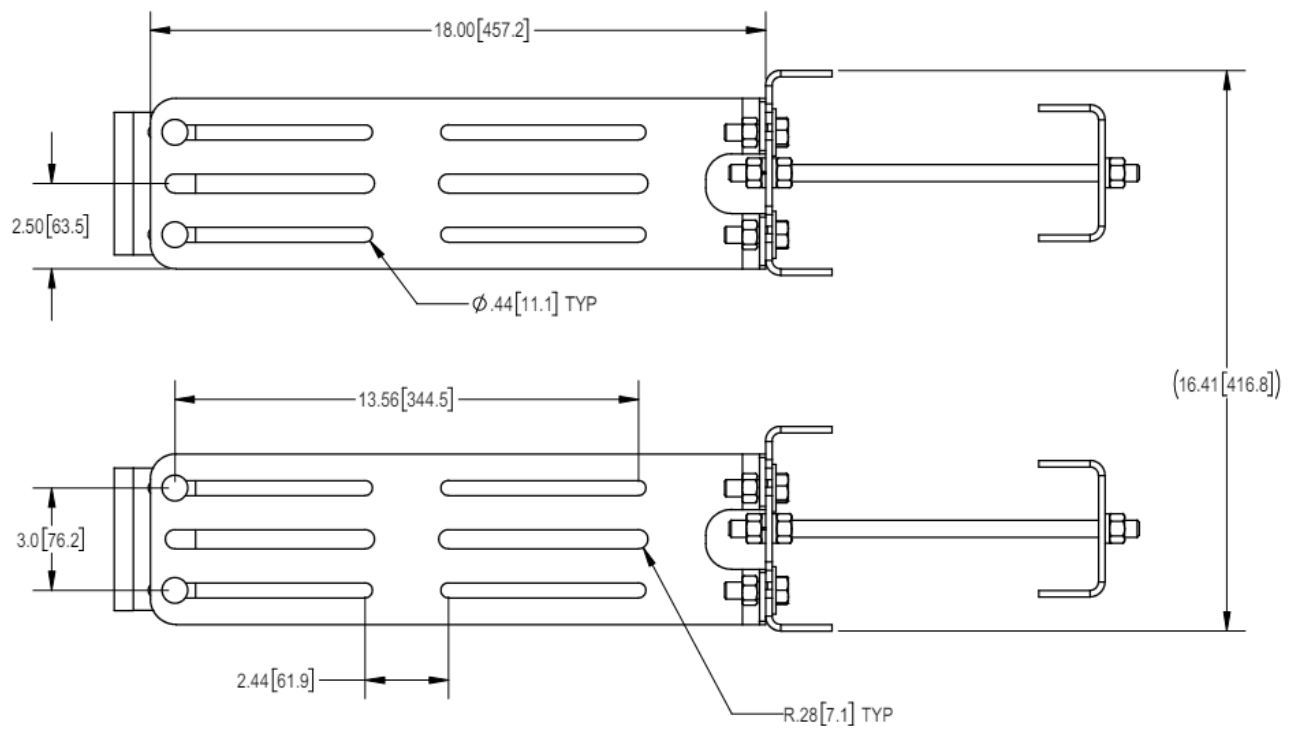
NOTES:

- PREASSEMBLE HANGER BRACKETS AND RRUS
- WITH ITEMS 4 & 5 LOOSE, SLIDE THE HANGER INTO POSITION THEN TIGHTEN BOLTS FOR INSTALLATION

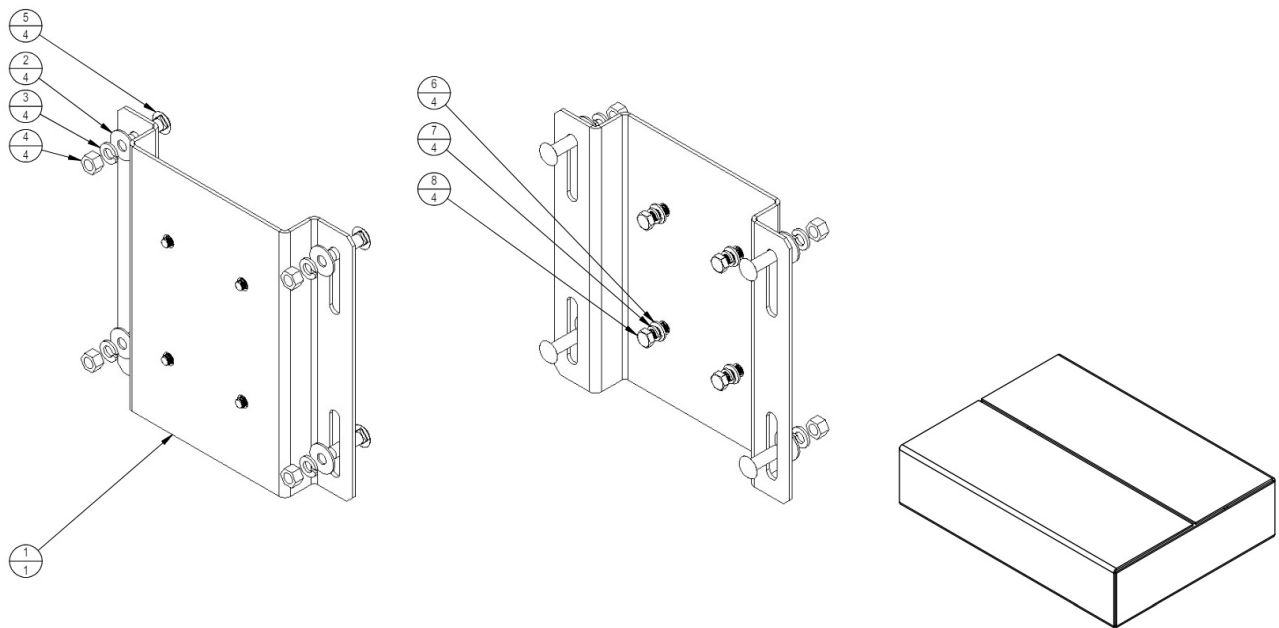


Dimension





Installation Instruction

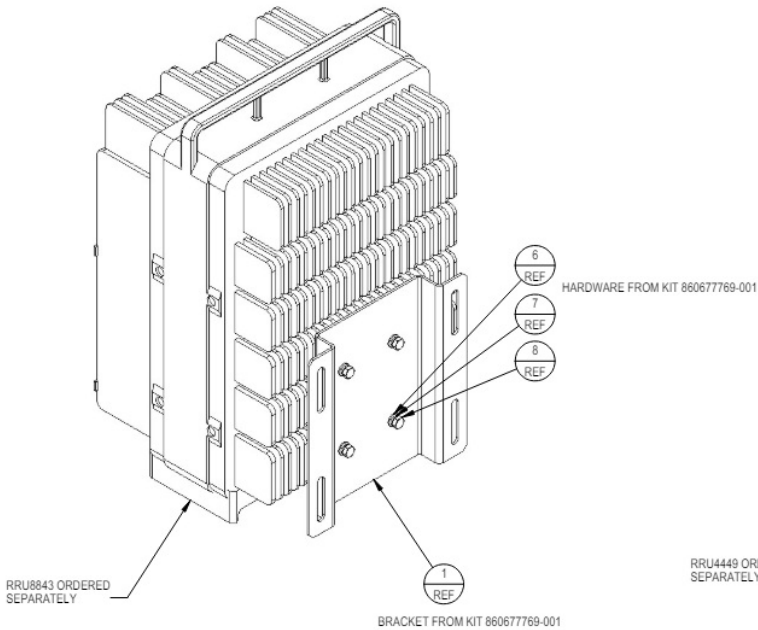


860677769-001 KIT, BRACKET, RRU8843/4449 RADIO MOUNT

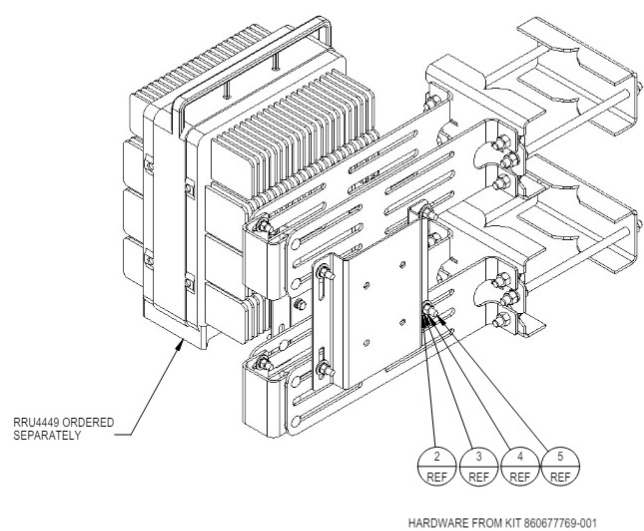
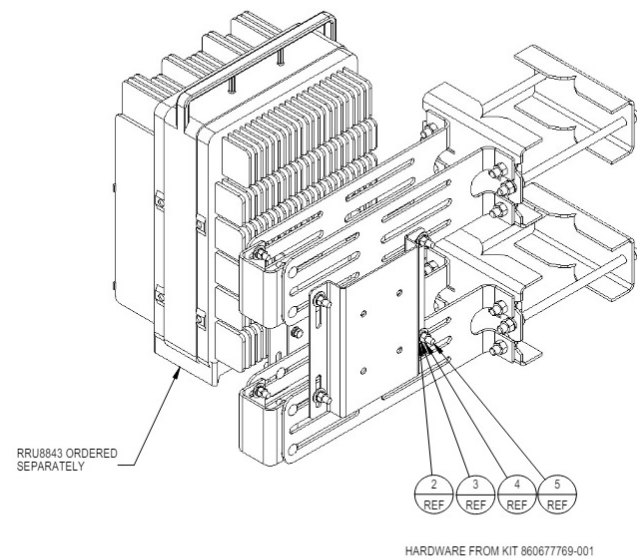
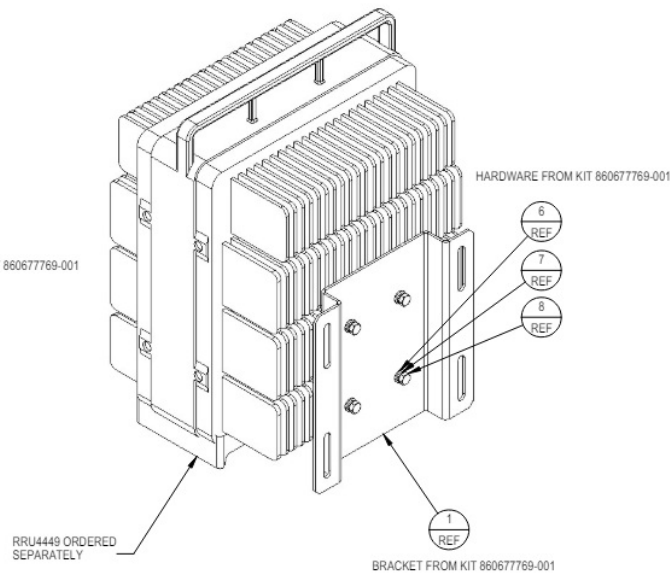
COMPONENT PART NUMBERS ARE PROVIDED FOR ASSEMBLY PURPOSES; INDIVIDUAL COMPONENTS MAY BE SHIPPED AS PARTS WITHIN AN INCLUDED KIT.

ITEM NO.	PART NUMBER	DESCRIPTION	QTY.
1	MTM101721-510	BRACKET, RRU MOUNTING, RR-FA2	1
2	GW-03	3/8" FLAT WASHER	4
3	GWL-03	3/8" GALV LOCK WASHER	4
4	GN-03	3/8" GALV HEX NUT	4
5	MTC8196	3/8 X 1-1/4" Carriage Bolt	4
6	MTC9419	M8 FLAT WASHER SS	4
7	MTC9418	M8 LOCK WASHER SS	4
8	MTC9415	M8 X 25mm HEX BOLT SS	4

RRU8843 BRACKET ASSEMBLY



RRU4449 BRACKET ASSEMBLY

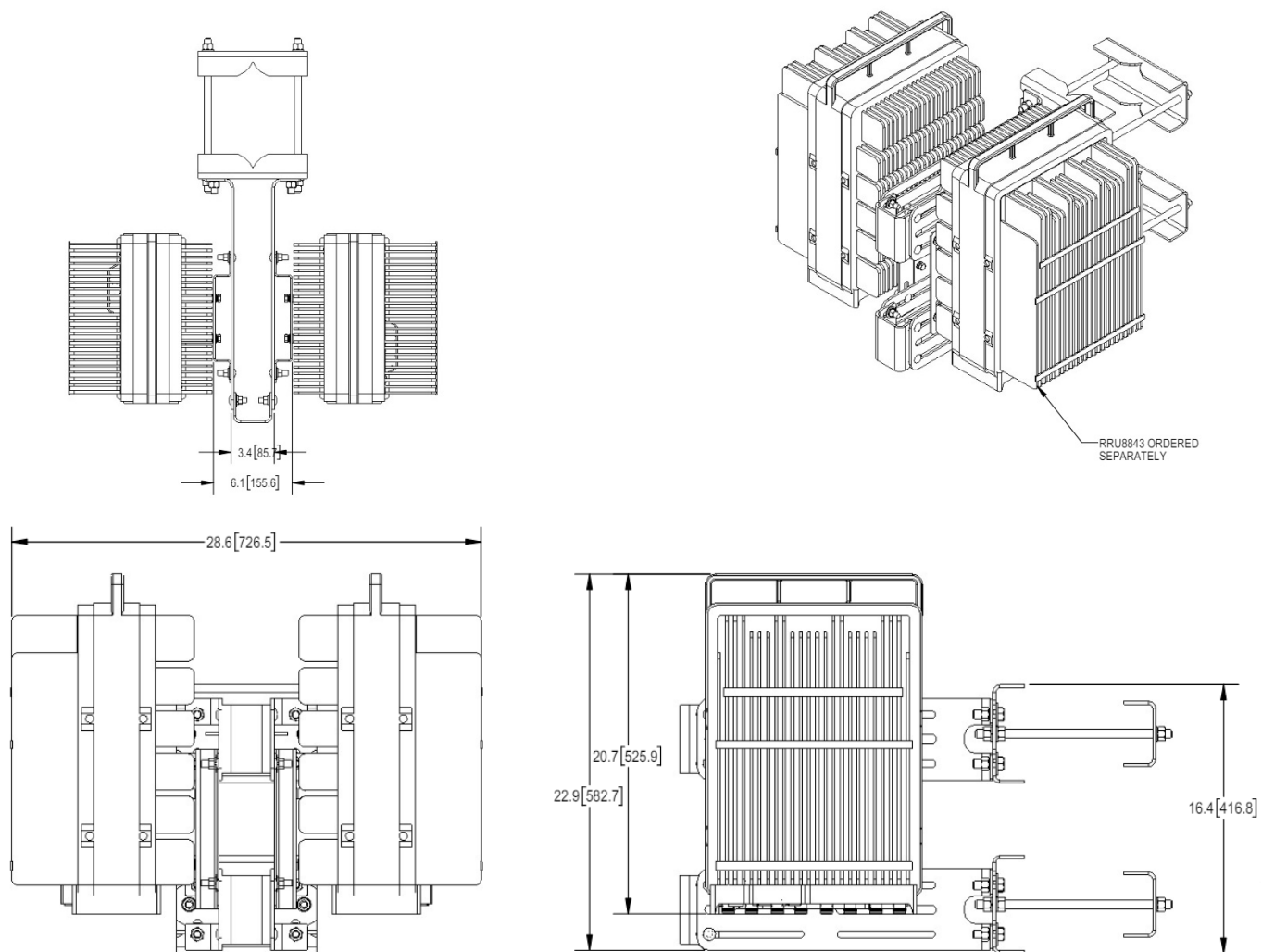


RRU8843 NOT SHOWN FOR CLARITY

RRU4449 NOT SHOWN FOR CLARITY

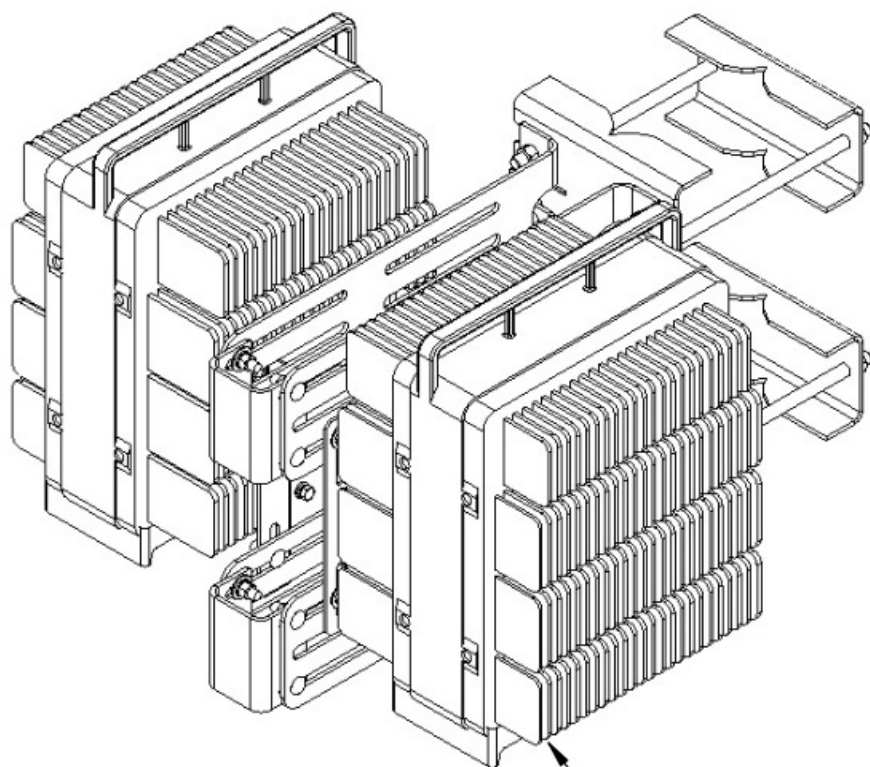
NOTES:

- EXAMPLE INSTALLATION WITH RRU8843

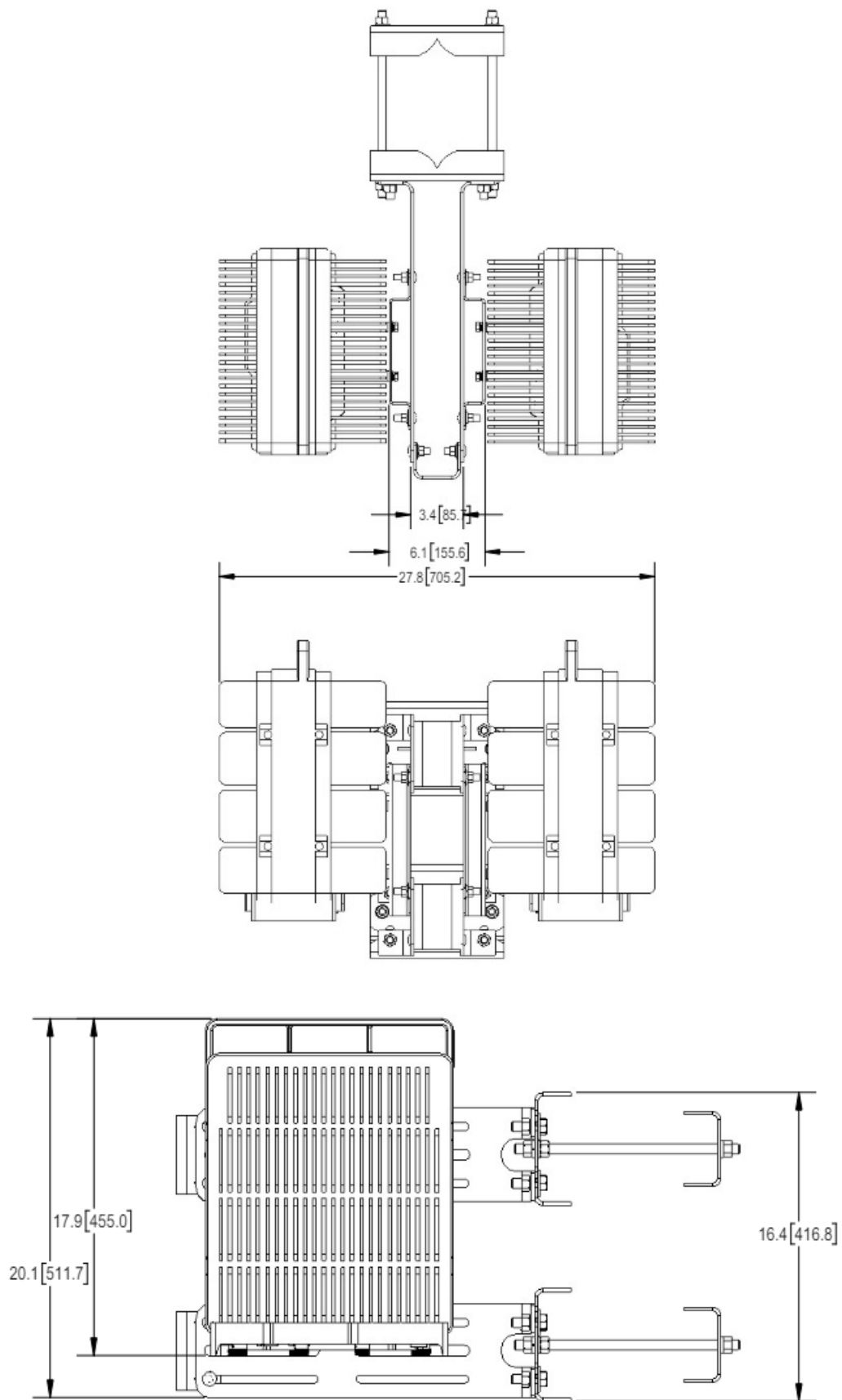


NOTES:

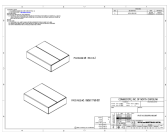
- EXAMPLE INSTALLATION WITH RRU4449



RRU4449 ORDERED
SEPARATELY



REVISIONS			
REV	DESCRIPTION	DATE	APPROVED
A	INITIAL RELEASE	TN1010 26FEB2024	TN1010 XXXXXXCMO



[COMMSCOPE RR-FA2-A Fast Access Rru Mount](#) [pdf] Installation Guide
RR-FA2-A Fast Access Rru Mount, RR-FA2-A, Fast Access Rru Mount, Access Rru Mount, Rru Mount, Mount

References

- [🔗 Product Patent](#)
- [User Manual](#)

[Manuals+](#), [Privacy Policy](#)

This website is an independent publication and is neither affiliated with nor endorsed by any of the trademark owners. The "Bluetooth®" word mark and logos are registered trademarks owned by Bluetooth SIG, Inc. The "Wi-Fi®" word mark and logos are registered trademarks owned by the Wi-Fi Alliance. Any use of these marks on this website does not imply any affiliation with or endorsement.