


COMMSCOPE RC-1010-S Base Shoe Posts



# COMMSCOPE RC-1010-S Base Shoe Posts Installation Guide

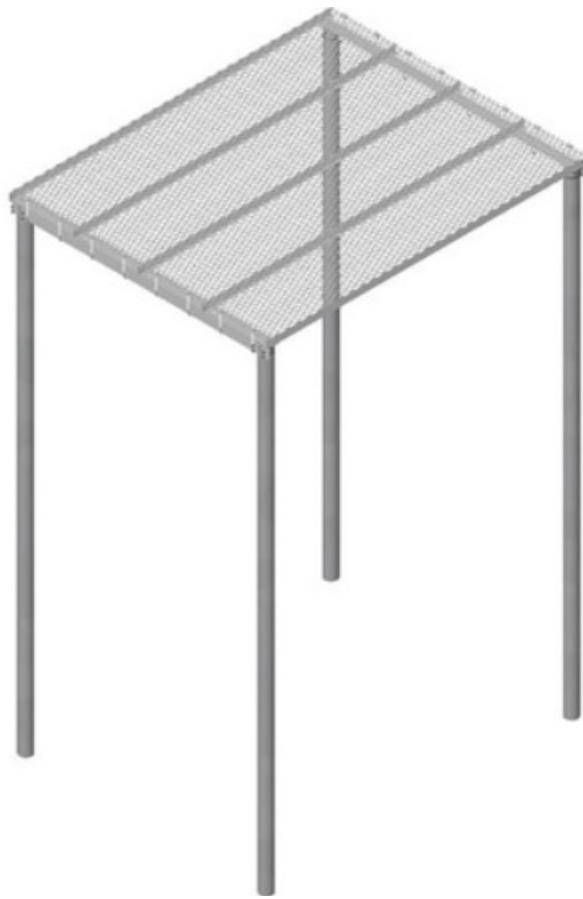
[Home](#) » [CommScope](#) » COMMSCOPE RC-1010-S Base Shoe Posts Installation Guide 

## Contents

- [1 CommScopeRC-1010-S Base Shoe Posts](#)
- [2 Product Usage Instructions](#)
- [3 GENERAL NOTES](#)
- [4 MANUFACTURING/SPECIAL REQUIREMENTS](#)
- [5 PACKAGING](#)
- [6 Documents / Resources](#)
  - [6.1 References](#)
- [7 Related Posts](#)

# COMMSCOPE

**CommScopeRC-1010-S Base Shoe Posts**



## Specifications

- **Dimensions:** 10'x10'
- **Height:** 135.9 inches
- **Length:** 130.0 inches
- **Width:** 126.3 inches
- **Weight:** 53.81 lbs (Base Shoe Weldment), 32.10 lbs (Outer Channel), 41.34 lbs (Canopy Center Channel), and more (refer to individual components)

## Product Usage Instructions

### General Notes

All metric dimensions are in brackets [X. X]. For patent info, visit <https://www.cs-pat.com>.

### Design Notes

Prior to installing the appurtenance, identify any hazards or obstructions to the climbing facility and safety climb. Additional products may be required to maintain integrity. During installation, take temporary and/or permanent precautionary measures to preserve the climbing facility and/or safety climb.

### Manufacturing/Special Requirements

Tighten all bolts securing flat plates by the turn-of-nut method. Tighten all U-bolts using turn-of-nut method with attention to leave equal distance and equal force on each leg of the U-bolt.

### Packaging

Packaging shall meet CommScope requirements per document IS-PL-3005. Printed document to be placed inside polybag and then in shipping container. Extra hardware may be supplied, bagged, and shipped.

**FAQ**

• **Q: What is the weight capacity of the product?**

A: The weight capacity of the product is not specified, but it is recommended to follow proper installation guidelines for safety.

• **Q: Are installation tools included with the product?**

A: No, installation tools are not included. Please refer to the provided list of component part numbers for assembly purposes.

**GENERAL NOTES**

- 1. ALL METRIC DIMENSIONS ARE IN BRACKETS [X. X]
- 2. FOR PATENT INFO: <https://www.cs-pat.com>

**DESIGN NOTES**

- 1. ANY HAZARDS OR OBSTRUCTIONS TO THE CLIMBING FACILITY AND SAFETY CLIMB MUST BE IDENTIFIED PRIOR TO INSTALLING THE APPURTENANCE. ADDITIONAL PRODUCTS MAY BE REQUIRED TO MAINTAIN THE INTEGRITY OF THE SAFETY CLIMB. DURING INSTALLATION, TEMPORARY AND/OR PERMANENT PRECAUTIONARY MEASURES SHOULD BE TAKEN TO PRESERVE THE CLIMBING FACILITY AND/OR SAFETY CLIMB.

**MANUFACTURING/SPECIAL REQUIREMENTS**

- 1. TIGHTEN ALL BOLTS SECURING FLAT PLATES BY THE TURN-OF-NUT METHOD. TIGHTEN ALL U-BOLTS USING TURN-OF-NUT METHOD WITH ATTENTION TO LEAVE EQUAL DISTANCE AND EQUAL FORCE ON EACH LEG OF THE U-BOLT.

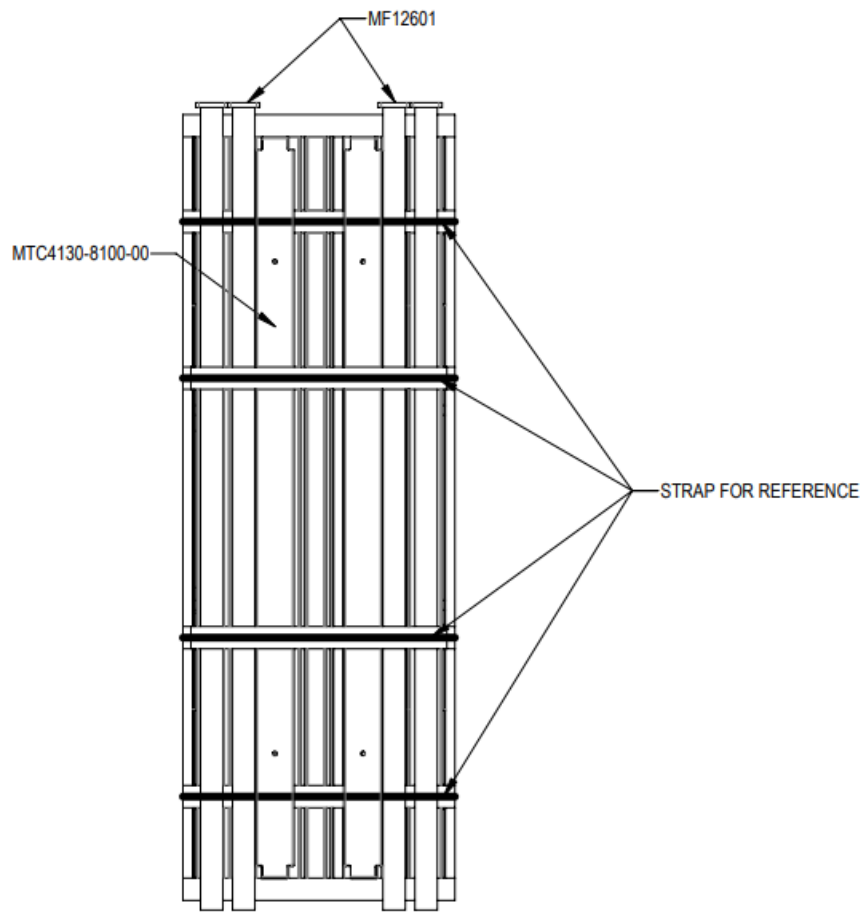
**TEST**

**PACKAGING**

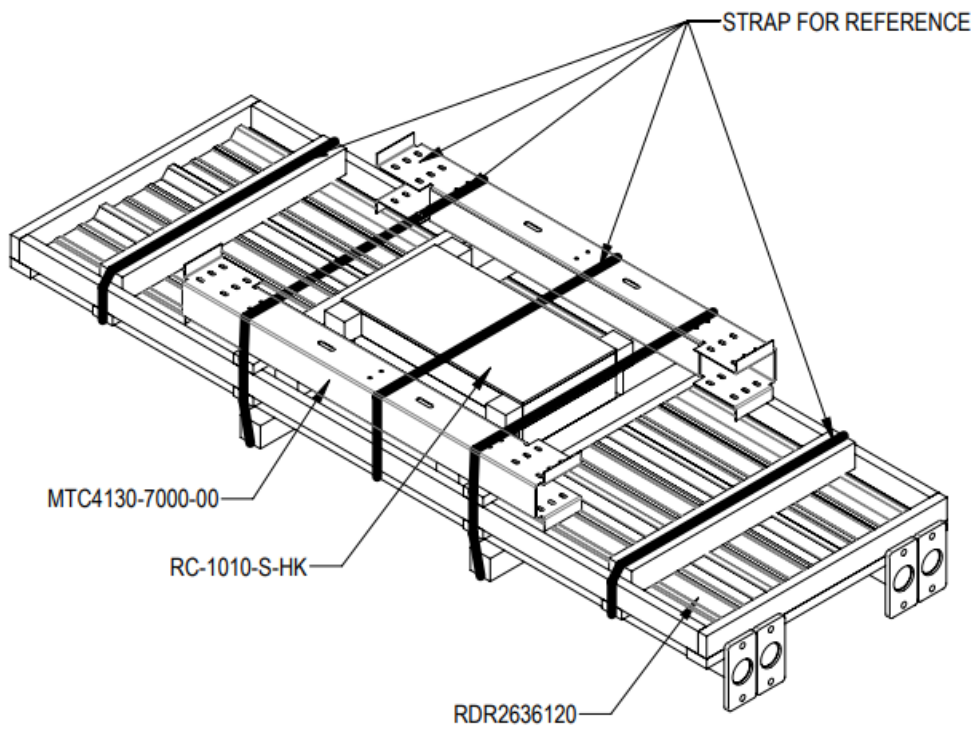
- 1. PACKAGING SHALL MEET COMMSCOPE REQUIREMENTS PER DOCUMENT IS-PL-3005
- 2. PRINTED DOCUMENT TO BE PLACED INSIDE POLYBAG AND THEN IN SHIPPING CONTAINER
- 3. EXTRA HARDWARE MAY BE SUPPLIED, BAGGED AND SHIPPED

**GENERAL NOTES**

REVISIONS			
REV.	DESCRIPTION	DATE	APPROVED
A	INITIAL RELEASE	RY1002 26MAR24	YW1047 40191985CMO





BOTTOM VIEW



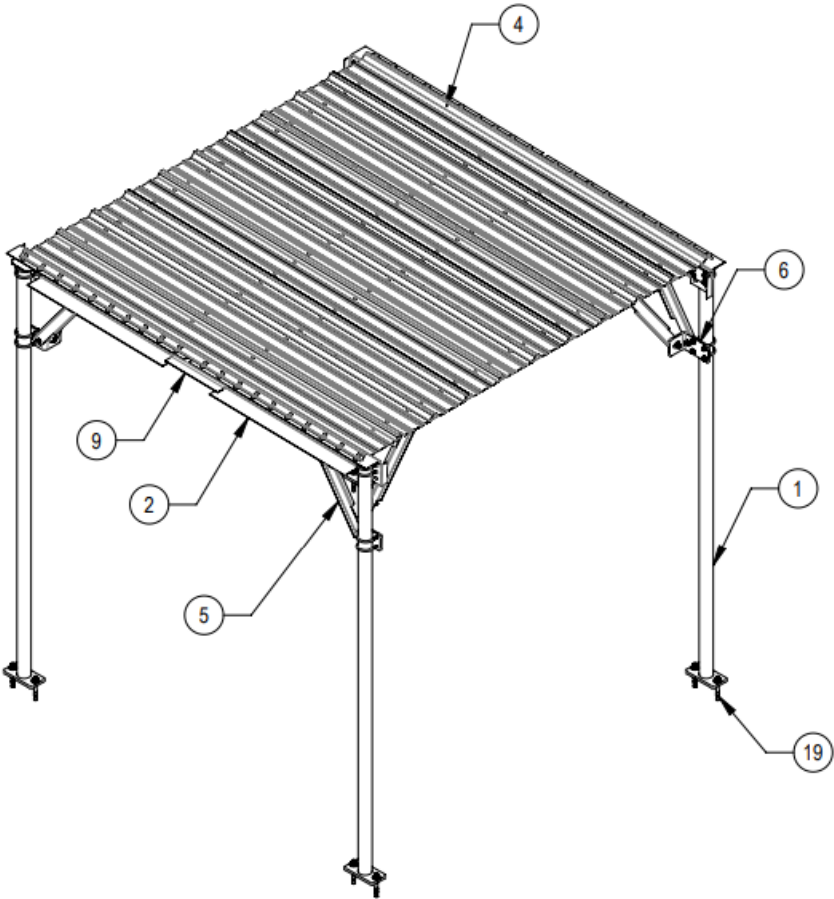
COMMSCOPE, INC. OF NORTH CAROLINA

TOLERANCES		SAP MATERIAL MASTER
1 PLACE .X[X] ± 0.2[6.3]	3 PLACE .XXX[X] ± 0.060[1.5]	RC-1010-S
2 PLACE .XX[X] ± 0.12[3.0]	ANGLES ± 2°	
FINISH		MATERIAL

DENSITY		lbs/in <sup>3</sup>
MASS	785.36	lbs
VOLUME	2765.89	in <sup>3</sup>
SURFACE AREA	76559.34	in <sup>2</sup>
HEIGHT	135.9"	
LENGTH	130.0"	
WIDTH	126.3"	

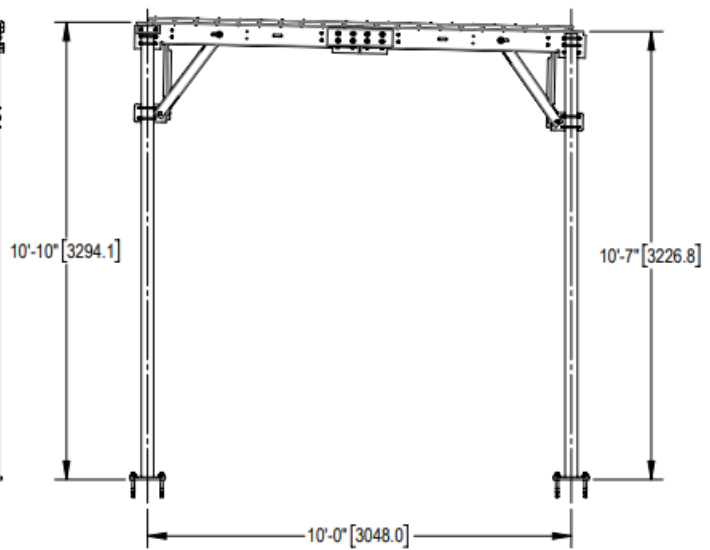
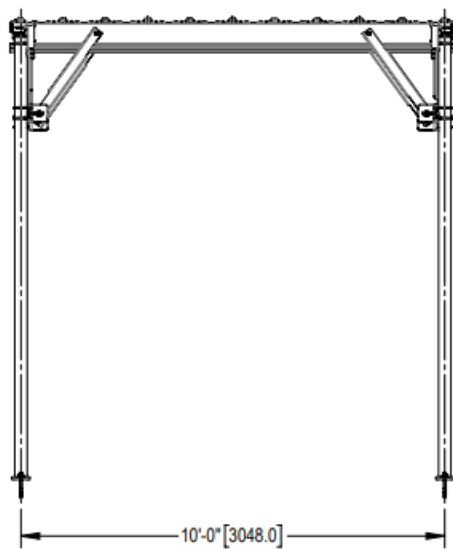
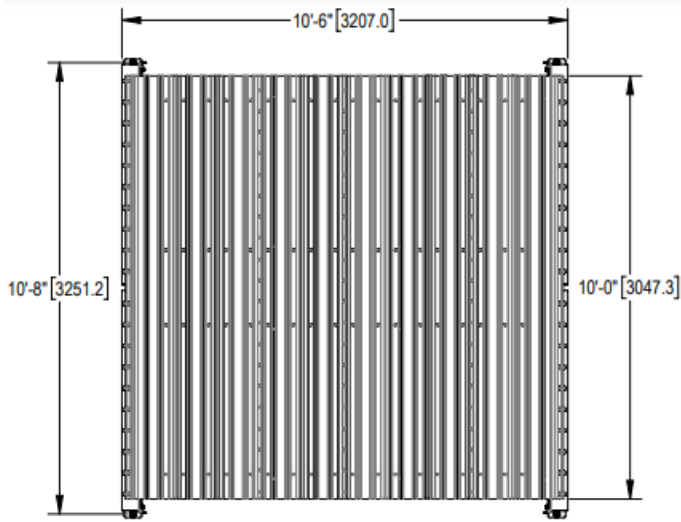
UNLESS OTHERWISE SPECIFIED DIMENSIONS ARE IN INCHES INTERPRET PER ANSI Y 14.5M-1994		NAME	DATE	TITLE  10'X10' RAIN CANOPY,10'-6"-BASE SHOE					
	CE	RY1002	26MAR24						
	RW	RY1002	04/29/2024						
	AD	YW1047	05/05/2024	SCALE 1:20	DOCUMENT NO.  RC-1010-S				
	RE	YMENG	05/05/2024						
	ECN 40191985CMO								
SIZE	Auth Group	INSL	MODEL			DRAWING			SHEET 1 OF 5
C			VERSION	STATUS	REVISION	VERSION	STATUS	REVISION	
			00	RE	A	00	RE	A	

COMPONENT PART NUMBERS PROVIDED FOR ASSEMBLY PURPOSES; INDIVIDUAL COMPONENTS MAY BE SHIPPED AS PARTS WITHIN AN INCLUDED KIT.



ITEM	PART NO.	DESCRIPTION	QTY.	WEIGHT
NOTE NO.				

1	MF12601		BASE SHOE WELDMENT,10' 6"	4	53.81 LBS
2	MTC4130-7000-00		OUTER CHANNEL, ROOF SUPPORT	4	32.10 LBS
3	MTC4130-8100-00		CANOPY CENTER CHANNEL	4	41.34 LBS
4	RDR2636120		ROOF DECKING PBR 26 GA 36" X 120"	4	29.65 LBS
5	MTC4130-3000-00		CANOPY BRACE	8	6.52 LBS
6	MTC4130-4000-00		CANOPY BRACE ADAPTER	4	9.16 LBS
7	MTC4130-5000-00		PLATE, 7"X 5"	4	2.76 LBS
8	MTC4130-6000-00		HEIGHT ADJUSTMENT BRACKET	2	1.26 LBS
9	MTC4130-9000-00		OUTER CONNECTION CHANNEL	2	6.71 LBS
10	GUB-4355		1/2" X 3-5/8" X 5" GALV U-BOLT	16	0.71 LBS
11	GB-04145		1/2" X 1-1/2" GALV BOLT KIT	20	0.13 LBS
12	GB-03105		3/8" X 1" GALV BOLT KIT	16	0.05 LBS
13	GB-05205FT		5/8" X 2" GALV BOLT KIT	16	0.26 LBS
14	GWF-04		1/2" GALV FLAT WASHER	36	0.04 LBS
15	GWF-05		5/8" GALV FLAT WASHER, 1.7OD	12	0.06 LBS
16	MTC3799C26		CLIP, RDR PANEL	40	0.05 LBS
17	MTC371531		1/4-14X7/8 SELF DRILLING HEX HEAD SCREW	100	0.02 LBS
18	TS1275		TEK SCREW #12 X 3/4, WITH NEOPRENE WASHER	112	0.02 LBS
19	MT-287		3/4" ANCHOR BOLT	8	1.08 LBS
		4			3



COMMScope, INC. OF NORTH CAROLINA

TITLE

10'X10' RAIN CANOPY, 10'-6"-BASE SHOE

SIZE

C

SCALE

1:32

DOCUMENT NO.

RC-1010-S



DRAWING

VERSION

00

STATUS

RE

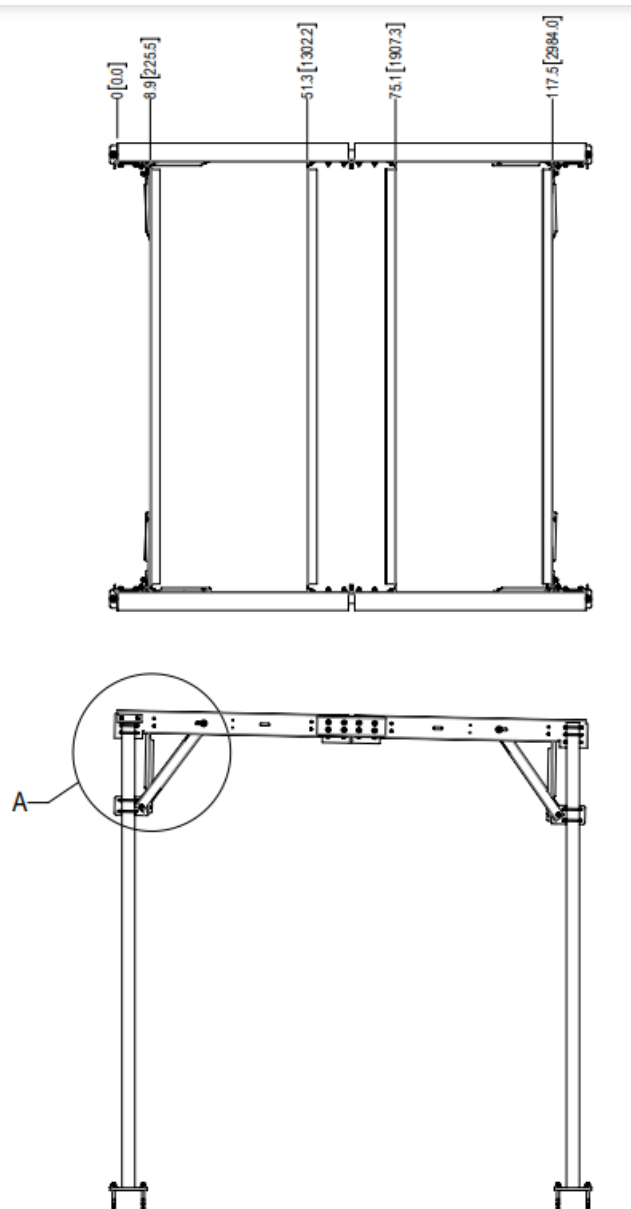
REVISION

A

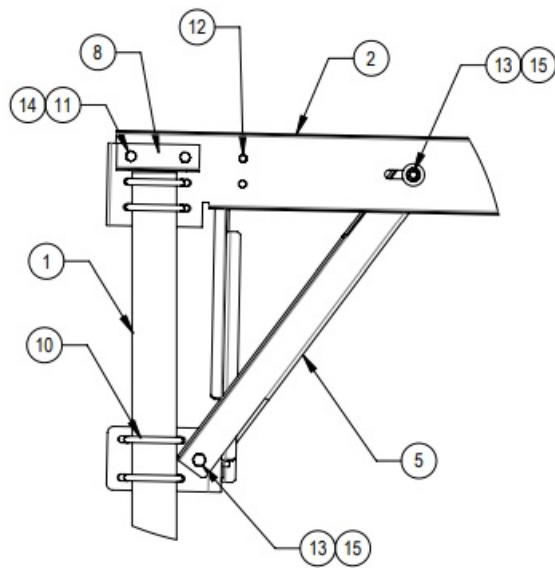
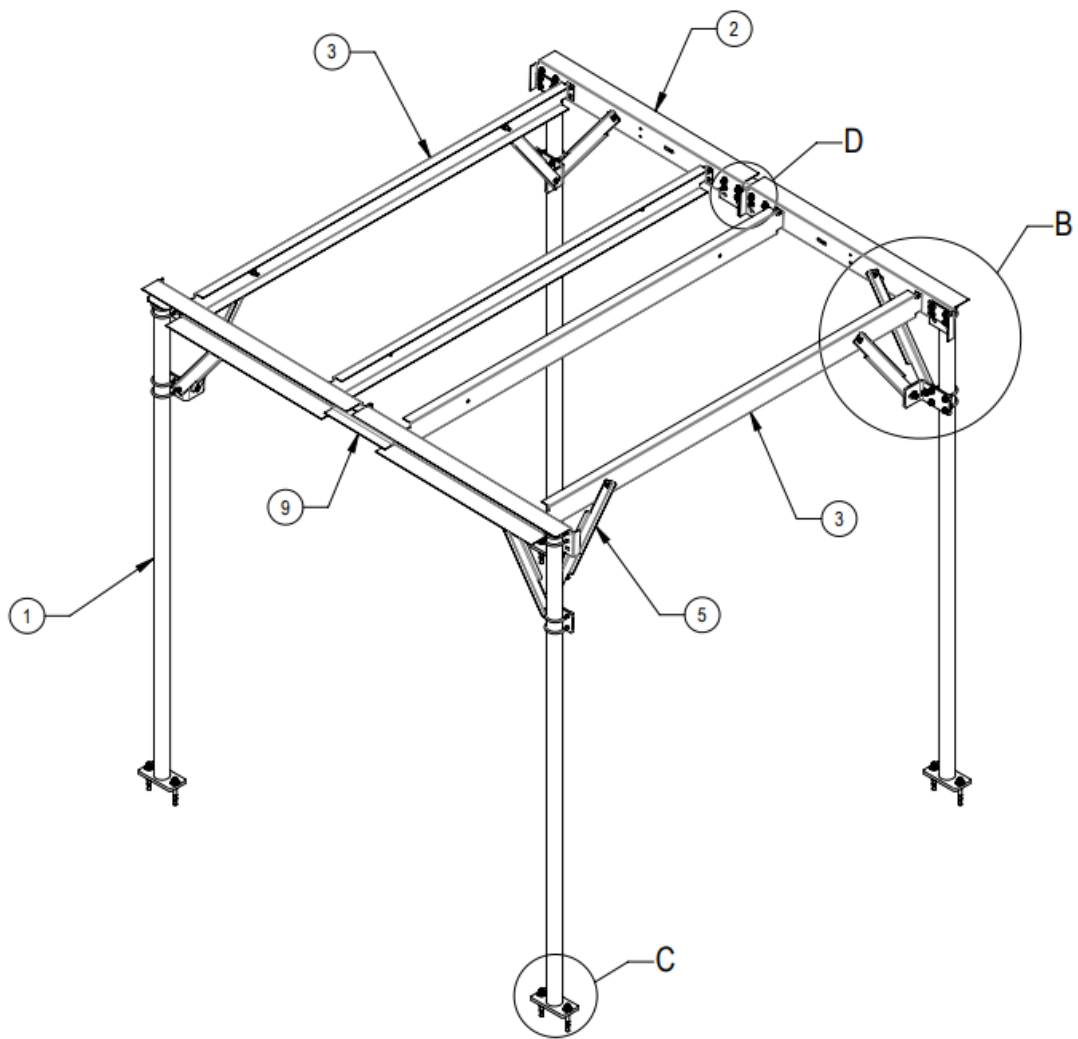
SHEET

2 OF 5

© 2024 CommScope, Inc. Confidential


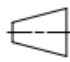






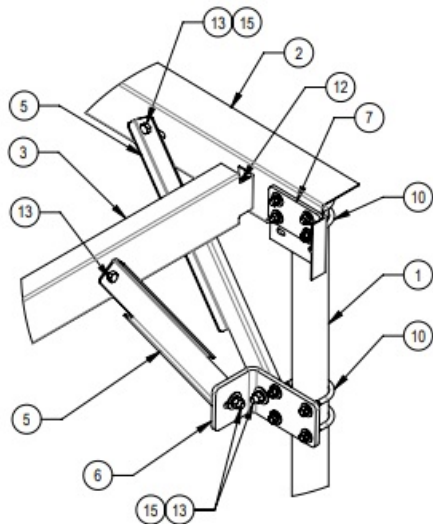
DETAIL A  
SCALE 1 : 8

HIDE ROOF DECKING FOR CLARITY

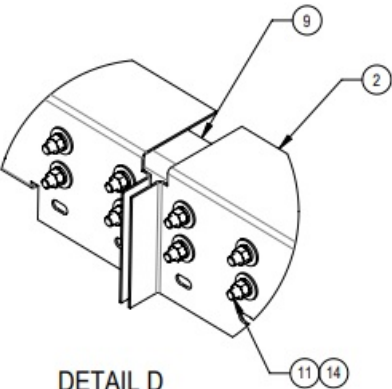
COMMSCOPE, INC. OF NORTH CAROLINA					
TITLE 10'X10' RAIN CANOPY,10'-6"-BASE SHOE					
SIZE C	SCALE 1:22	DOCUMENT NO. RC-1010-S			
 		DRAWING		SHEET 3 OF 5	
		VERSION	STATUS		REVISION
		00	RE		A

© 2024 CommScope, Inc. Confidential

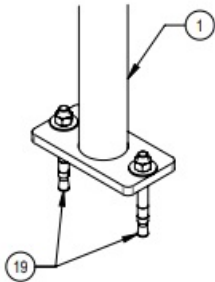
© 2024 CommScope, Inc. Confidential



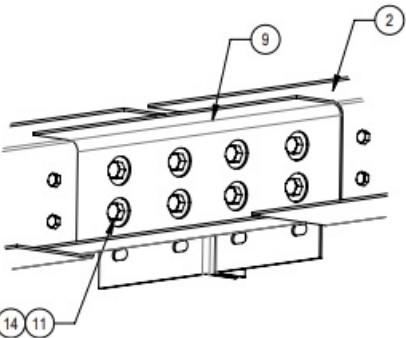
DETAIL B  
SCALE 1 : 8





DETAIL D  
SCALE 1 : 4



DETAIL C  
SCALE 1 : 6

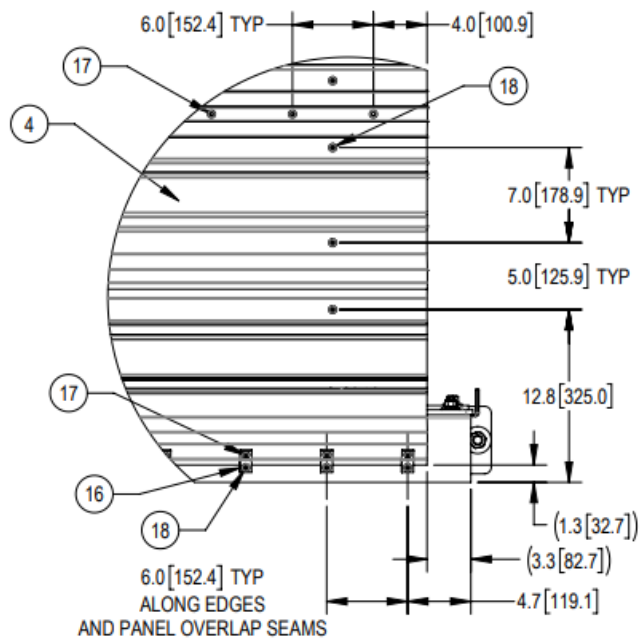
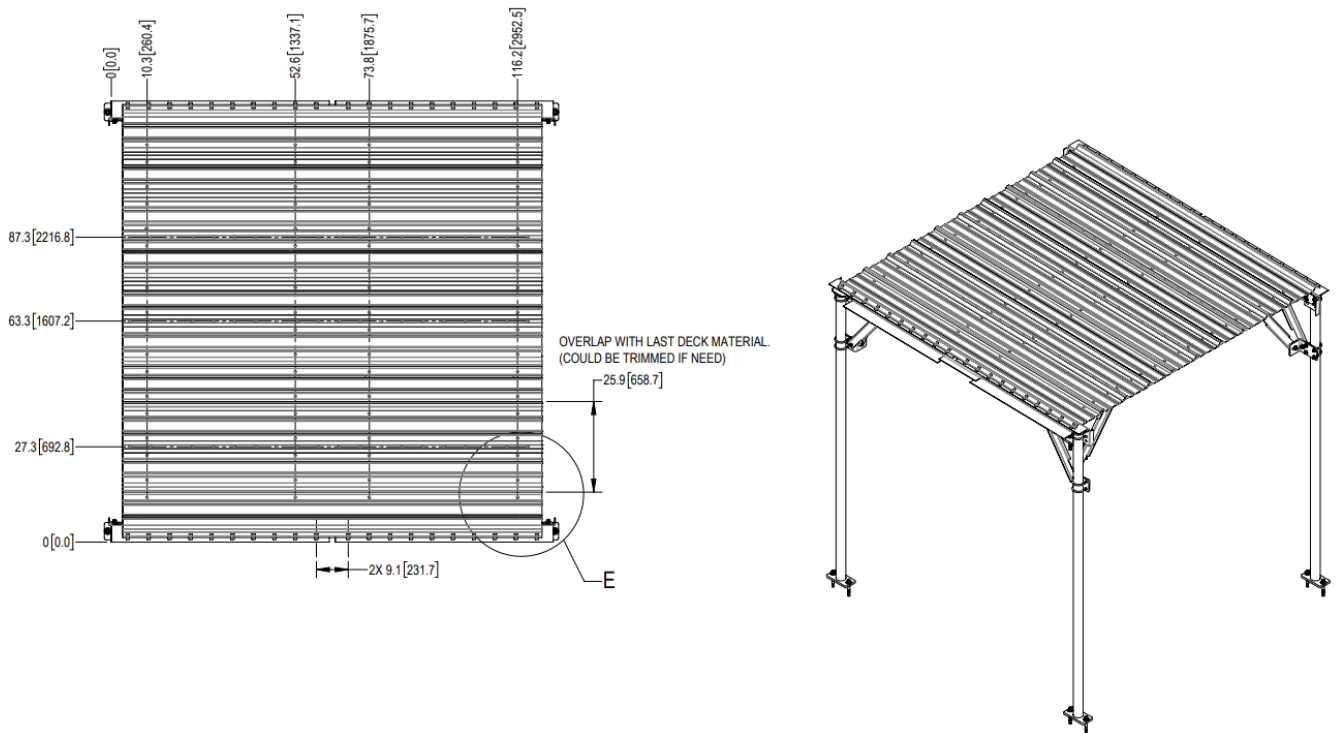


DETAIL D  
BACK VIEW  
SCALE 1 : 4



COMMSCOPE, INC. OF NORTH CAROLINA					
TITLE 10'X10' RAIN CANOPY,10'-6"-BASE SHOE					
SIZE C	SCALE 1:20	DOCUMENT NO. RC-1010-S			
 		DRAWING			SHEET 4 OF 5
		VERSION	STATUS	REVISION	
		00	RE	A	

© 2024 CommScope, Inc. Confidential

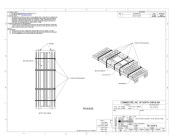
© 2024 CommScope, Inc. Confidential



DETAIL E  
SCALE 1 : 8

COMMSCOPE, INC. OF NORTH CAROLINA					
TITLE 10'X10' RAIN CANOPY, 10'-6"-BASE SHOE					
SIZE C	SCALE 1:32	DOCUMENT NO. RC-1010-S			
 		DRAWING		SHEET 5 OF 5	
		VERSION	STATUS		REVISION
		00	RE		A

© 2024 CommScope, Inc. Confidential



[COMMSCOPE RC-1010-S Base Shoe Posts](#) [pdf] Installation Guide  
MF12601, MTC4130-7000-00, MTC4130-8100-00, RDR2636120, RC-1010-S Base Shoe Posts,  
RC-1010-S, Base Shoe Posts, Shoe Posts, Posts

## References

- [Product Patent](#)
- [User Manual](#)

### Manuals+, [Privacy Policy](#)

This website is an independent publication and is neither affiliated with nor endorsed by any of the trademark owners. The "Bluetooth®" word mark and logos are registered trademarks owned by Bluetooth SIG, Inc. The "Wi-Fi®" word mark and logos are registered trademarks owned by the Wi-Fi Alliance. Any use of these marks on this website does not imply any affiliation with or endorsement.