

CommScope CS04 PGP Polymer Cable Management System



CommScope CS04 PGP Polymer Cable Management System Instruction Manual

[Home](#) » [CommScope](#) » CommScope CS04 PGP Polymer Cable Management System Instruction Manual 

Contents

- [1 CommScope CS04 PGP Polymer Cable Management System](#)
- [2 Specifications](#)
- [3 Installation Instructions](#)
- [4 FAQ](#)
- [5 Product Parts](#)
- [6 Recommended Configurations](#)
- [7 Installation Instructions](#)
- [8 Disassembly of wedge structure](#)
- [9 Documents / Resources](#)
 - [9.1 References](#)

COMMSCOPE®

CommScope CS04 PGP Polymer Cable Management System



Specifications

- Product Name: PGP Polymer Cable Management System
- Model Variants: PGP-CS04, PGP-CS08, PGP-CS10, PGP-CS16, PGP-CS18
- Components: PGCS-1000, PGCS-2000, PGCS-3000, PGCS-4000
- Recommended Pipe Sizes: 2-3/8 or 2-7/8
- Applied Torque: 15 Nm
- Usage: Gen1 & Gen2 Snap-in hangers

Installation Instructions

Product Parts:

- PGCS-1000
- PGP-CS02
- T shape holes
- Hardware kit

Clamp Assembly:

The clamp is combined by two PGCS-1000 and hardware kit. It can be assembled on 2-3/8 or 2-7/8 pipe with an applied torque of 15 Nm.

Wedge Structure Assembly:

For PGCS-2000 and PGCS-3000, fully insert the wedge structure into the respective holes and slide down until you hear a click to indicate installation completion.

Panel Installation:

Follow the recommended configurations for each panel type. Stack up to two hangers in each 3/4 hole. Do not use the two holes near the clamp on the inside of the panel for PGP-CS08 and PGP-CS18.

Clamp Installation:

Fix the clamp to the pipe and insert the tongues on both sides into the corresponding lugs. Combine components as specified for each product variant.

Disassembly Instructions:

To disassemble the clamp, hold the tongues on both sides and pull the clamp halves apart. For wedge structure disassembly, follow the provided tooling instructions.

FAQ

Q: Can I use this product with any type of cable hanger?

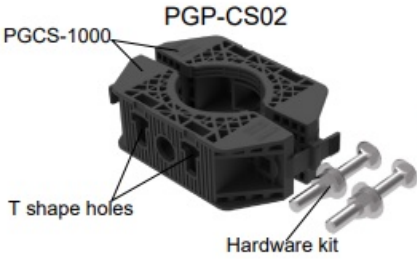
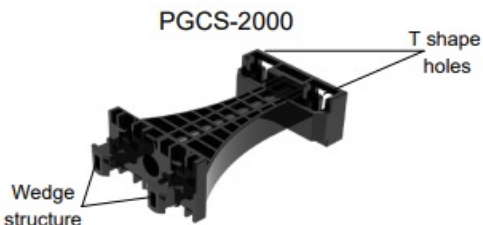
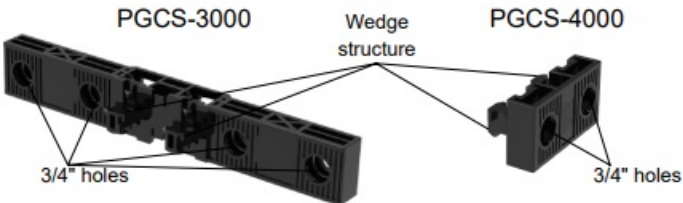
A: This product is designed for use with Gen1 & Gen2 Snap-in hangers only.

Q: What should I do if I encounter difficulty during installation?

A: Ensure you follow the recommended torque values during installation to prevent structural damage or disassembly issues.

PGP-CS04, PGP-CS08, PGP-CS10, PGP-CS16 and PGP-CS18
PGP Polymer Cable Management System

Product Parts

| | |
|--|--|
|  <p>PGP-CS02</p> <p>PGCS-1000</p> <p>T shape holes</p> <p>Hardware kit</p> <p>The clamp is combined by two PGCS-1000 and hardware kit. Can assembled on 2-3/8" or 2-7/8" pipe with an applied torque of 15 Nm.</p> |  <p>PGCS-2000</p> <p>T shape holes</p> <p>Wedge structure</p> |
|  <p>PGCS-3000</p> <p>Wedge structure</p> <p>PGCS-4000</p> <p>3/4" holes</p> <p>3/4" holes</p> <p>Panels: For installing Snap-in cable hangers</p> | <p>NOTE:</p> <ol style="list-style-type: none">1. Please use the recommended torque to install the clamp.2. This product only use for Gen1 & Gen2 Snap-in hangers. |

Recommended Configurations

PGP-CS04



PGP-CS08



PGP-CS10



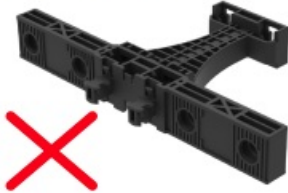
PGP-CS16



PGP-CS18

**WARNING**

Improper installation may cause structural damage or difficulty in disassembly.



Quantities of parts used in different configurations

| | PGP-CS02 | PGCS-2000 | PGCS-3000 | PGCS-4000 |
|----------|----------|-----------|-----------|-----------|
| PGP-CS04 | 1 | X | X | 2 |
| PGP-CS08 | 1 | X | 1 | 1 |
| PGP-CS10 | 1 | 1 | 1 | 1 |
| PGP-CS16 | 1 | 2 | 2 | X |
| PGP-CS18 | 1 | 1 | 2 | 2 |

NOTE:

1. Can only be applied to jump cable.
2. Stack up to two hangers in each 3/4" hole.
3. Can not use the two holes near the clamp on the inside of the panel. (PGP-CS08 and PGP-CS18)

Notice: CommScope disclaims any liability or responsibility for the results of improper or unsafe installation, inspection, maintenance, or removal practices.

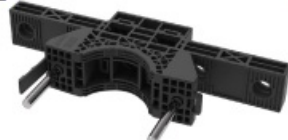
Installation Instructions

First install the components on both sides of the Clamp, then install the two assembled clamps to the 2-3/8" or 2-7/8" pipe with bolts.

Installation of Clamp: Fix clamp to the pipe, then insert the tongues on both sides of the clamp into the corresponding lugs.

Disassembly of Clamp: Hold the tongues on both sides of the clamp. Use both hands to pull the clamp halves apart by removing the tongue from the lug.

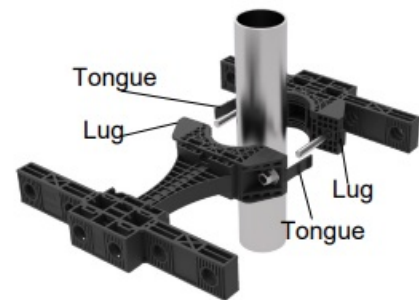
First install the components on both sides of the Clamp, then install the two assembled clamps to the 2-3/8" or 2-7/8" pipe with bolts.

A**B****D****E****C**

C+C is combined into PGP-CS04. C+D is combined into PGP-CS08.
B+C is combined into PGP-CS10. B+B is combined into PGP-CS16.
A+E is combined into PGP-CS18.

NOTE:

When clamp (PGCS-1000) and long panel (PGCS-3000) are directly installed, two bolts need to be pre-inserted into the mounting holes. (D and E in the picture above)



Installation of Clamp: Fix clamp to the pipe, then insert the tongues on both sides of the clamp into the corresponding lugs.

Disassembly of Clamp: Hold the tongues on both sides of the clamp. Use both hands to pull the clamp halves apart by removing the tongue from the lug.

**WARNING**

Do not tighten the clamp to the pipe with bolts alone to prevent it from deforming and causing other components to fail to be installed.

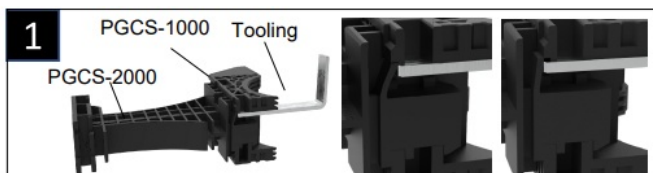
WARNING

Do not tighten the clamp to the pipe with bolts alone to prevent it from deforming and causing other components to fail to be installed.

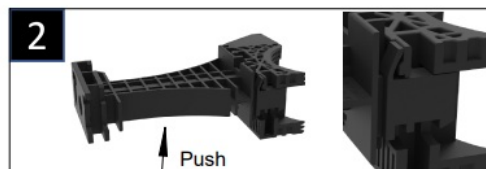
Installation of wedge structure: Fully insert the wedge structure into the T shape holes, slide the wedge structure down, after hear a “click” to indicate that the installation is complete.

Disassembly of wedge structure

1. Use tooling as shown in the figure to push back the beam, then tilt up PGCS-2000 so that the beam snaps onto the mounting surface. And follow the same method to push out the other beam.
2. Hold the PGCS-1000, push out the PGCS-2000 as shown in the figure, and then pull it out to complete the disassembly.



Use tooling as shown in the figure to push back the beam, then tilt up PGCS-2000 so that the beam snaps onto the mounting surface. And follow the same method to push out the other beam.



Hold the PGCS-1000, push out the PGCS-2000 as shown in the figure, and then pull it out to complete the disassembly.

CommScope

3642 E US Highway 70, Claremont, NC 28610 USA

(828) 324-2200 (800) 982-1708

www.commscope.com


Customer Service 24 hours

North America: +1-800-255-1479 (toll free)

Any country: +1-779-435-6500

email: acicustomersupportcenter@commscope.com

Documents / Resources

| | |
|---|--|
|  | <p>CommScope CS04 PGP Polymer Cable Management System [pdf] Instruction Manual CS04 PGP Polymer Cable Management System, CS04, PGP Polymer Cable Management System, Cable Management System, Management System</p> |
|---|--|

References

-  [CommScope | now meets next](#)

- [User Manual](#)

[Manuals+](#), [Privacy Policy](#)

This website is an independent publication and is neither affiliated with nor endorsed by any of the trademark owners. The "Bluetooth®" word mark and logos are registered trademarks owned by Bluetooth SIG, Inc. The "Wi-Fi®" word mark and logos are registered trademarks owned by the Wi-Fi Alliance. Any use of these marks on this website does not imply any affiliation with or endorsement.