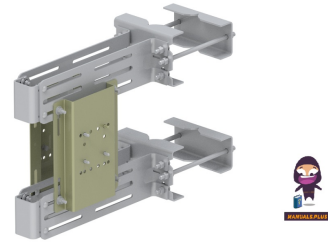



COMMSCOPE BRR-FA2-A Fast Access Rru Mount



COMMSCOPE BRR-FA2-A Fast Access Rru Mount Installation Guide

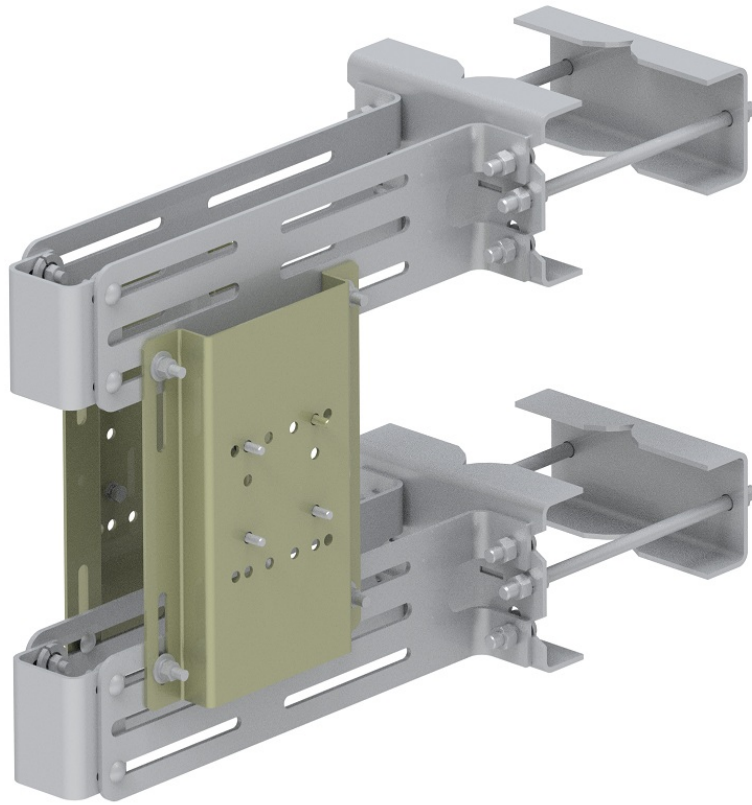
[Home](#) » [CommScope](#) » **COMMSCOPE BRR-FA2-A Fast Access Rru Mount Installation Guide** 

Contents

- [1 COMMSCOPE BRR-FA2-A Fast Access Rru Mount](#)
- [2 Product Information](#)
- [3 Product Usage Instructions](#)
- [4 Frequently Asked Questions](#)
- [5 GENERAL INFORMATION](#)
- [6 DESCRIPTION](#)
- [7 INSTALLATION](#)
- [8 Documents / Resources](#)
 - [8.1 References](#)



COMMSCOPE BRR-FA2-A Fast Access Rru Mount



Product Information

Specifications

- **Dimensions:** 16.4" (H) x 30.0" (L) x 8.5" (W)
- **Material:** Confidential
- **Weight:** 50.68 lbs
- **Volume:** 179.49
- **Surface Area:** 2366.62

Product Usage Instructions

General Notes

1. **Metric Dimensions:** All metric dimensions are in brackets [X.X].
2. **Patent Info:** For patent information, visit [here](#).

Design Notes

- **Hazards and Obstructions:** Identify any hazards or obstructions before installing the appurtenance. Additional products may be required to maintain safety climb integrity. Take precautionary measures during installation to preserve the climbing facility.
- **Compatibility:** The RR-FA2-A is compatible with Samsung, Nokia, and Ericsson ERS & Legacy Radios.

Manufacturing/Special Requirements

Tightening Instructions:

Tighten all bolts securing flat plates using the turn-of-nut method. U-bolts should also be tightened using the turn-of-nut method, ensuring equal distance and force on each leg.

Test

Perform necessary tests as per specific requirements.

Packaging

1. **Packaging Requirements:** Packaging must meet CommScope requirements per document IS-PL-3005.
2. **Hardware Placement:** Printed document to be placed inside a polybag and then in the shipping container.
Extra hardware may be supplied, bagged, and shipped.

Frequently Asked Questions

Q: What are the dimensions of the product?

A: The product dimensions are 16.4 (H) x 30.0 (L) x 8.5 (W).

Q: Which radios are compatible with RR-FA2-A?

A: RR-FA2-A is compatible with Samsung, Nokia, and Ericsson ERS & Legacy Radios.

Q: How should U-bolts be tightened?

A: U-bolts should be tightened using the turn-of-nut method, ensuring equal distance and force on each leg.

GENERAL INFORMATION**1. GENERAL NOTES**

1. ALL METRIC DIMENSIONS ARE IN BRACKETS [X. X]
2. FOR PATENT INFO: <https://www.cs-pat.com>

2. DESIGN NOTES

1. ANY HAZARDS OR OBSTRUCTIONS TO THE CLIMBING FACILITY AND SAFETY CLIMB MUST BE IDENTIFIED BEFORE INSTALLING THE APPURTENANCE. ADDITIONAL PRODUCTS MAY BE REQUIRED TO MAINTAIN THE INTEGRITY OF THE SAFETY CLIMB. DURING INSTALLATION, TEMPORARY AND/OR PERMANENT PRECAUTIONARY MEASURES SHOULD BE TAKEN TO PRESERVE THE CLIMBING FACILITY AND/OR SAFETY CLIMB.
2. THE "RR-FA2-A" IS COMPATIBLE WITH SAMSUNG, NOKIE, AND ERICSSON ERS & LEGACY RADIOS.

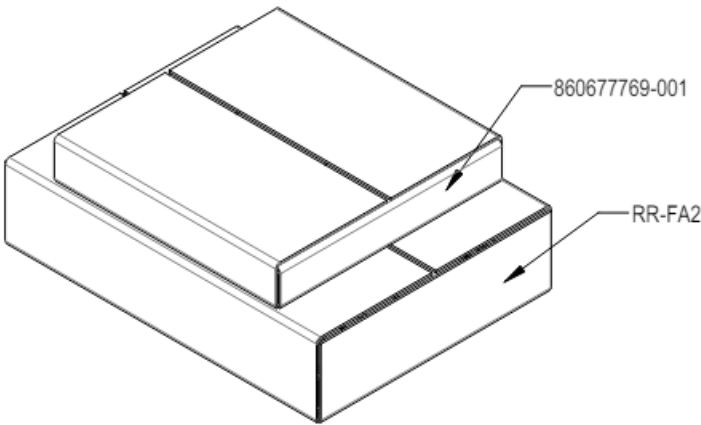
3. MANUFACTURING/SPECIAL REQUIREMENTS

1. TIGHTEN ALL BOLTS SECURING FLAT PLATES BY THE TURN-OF-NUT METHOD. TIGHTEN ALL U-BOLTS USING THE TURN-OF-NUT METHOD WITH ATTENTION TO LEAVING EQUAL DISTANCE AND EQUAL FORCE ON EACH LEG OF THE U-BOLT.

4. TEST

5. PACKAGING



- 1. PACKAGING SHALL MEET COMMSCOPE REQUIREMENTS PER DOCUMENT IS-PL-3005.
- 2. PRINTED DOCUMENT TO BE PLACED INSIDE POLYBAG AND THEN IN SHIPPING CONTAINER.
- 3. EXTRA HARDWARE MAY BE SUPPLIED, BAGGED AND SHIPPED.







PACKAGE

DESCRIPTION

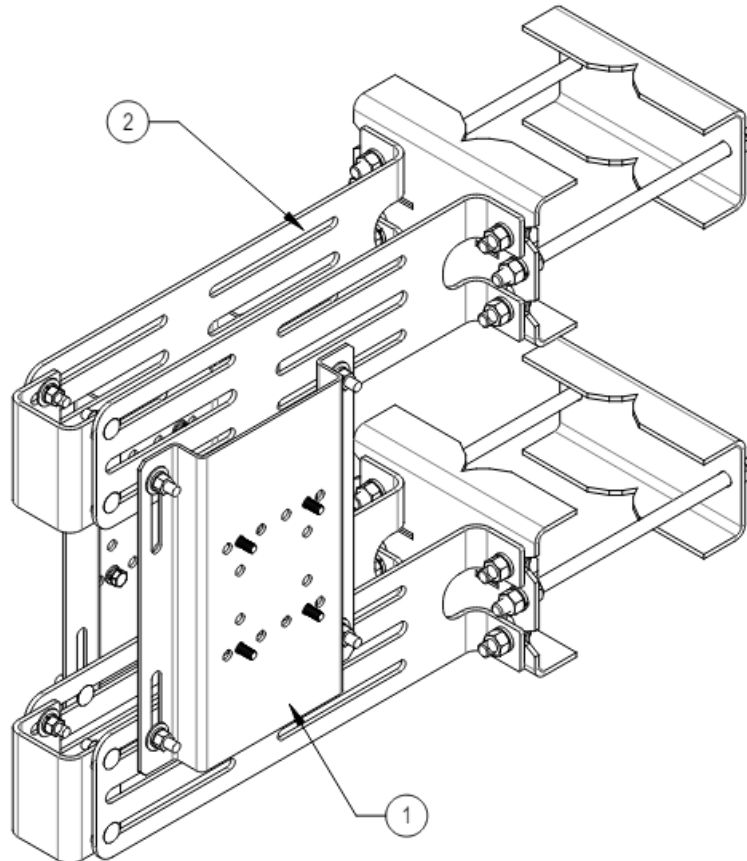
REVISIONS			
REV.	DESCRIPTION	DATE	APPROVED
A	INITIAL RELEASE	JL1183 15MAR24	YZ1080 40191193CMO
B	UPDATED FOR 860677769-001 CHANGE	YMENG 26APR24	YZ1080 40193886CMO
C	MASS CORRECTED	YMENG 30MAY24	YZ1080 40196881CMO

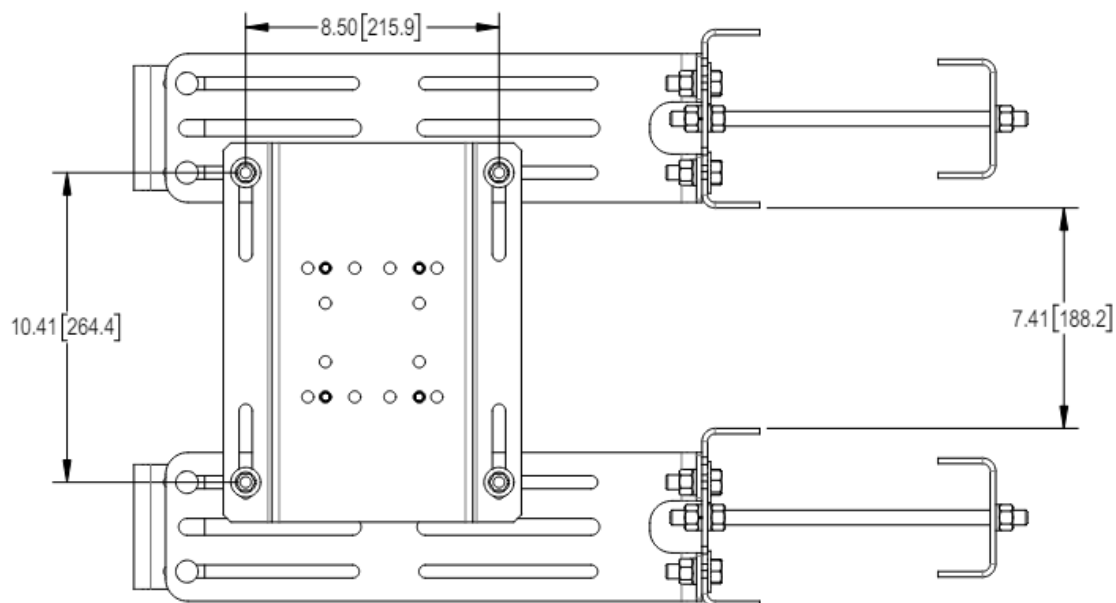
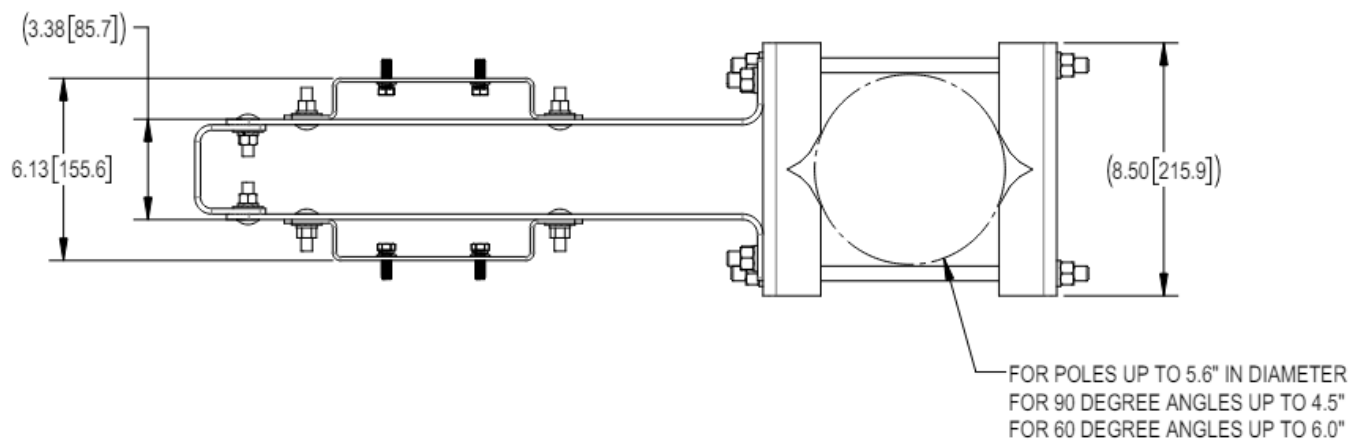
			COMMSCOPE, INC. OF NORTH CAROLINA										
			TOLERANCES					SAP MATERIAL MASTER					
			0 PLACE		X[X] ± 0.2[6.3]		2 PLACE		XX[X] ± 0.060[1.5]			RR-FA2-A	
			1 PLACE		.X[X] ± 0.12[3.0]		ANGLES		± 2°				
			FINISH					MATERIAL					
<div>UNLESS OTHERWISE SPECIFIED DIMENSIONS ARE IN INCHES INTERPRET PER ASST Y 4.38-1994</div>				NAME	DATE	TITLE B2B FAST ACCESS RRU MOUNT							
			CE	JL1183	15MAR24								
			RW	YMENG	05/30/2024								
			AD	YZ1080	05/30/2024								
				RE	YMENG	05/30/2024	SCALE 1:8		DOCUMENT NO. RR-FA2-A				
			ECN 40196881CMO										
			DENSITY		lbs/in³								
			MASS	50.68	lbs								
			VOLUME	179.49	in³								
SURFACE AREA	2366.62	in²											
HEIGHT	16.4"		SIZE	Auth Group	INSL	MODEL			DRAWING			SHEET 1 OF 3	
LENGTH	30.0"		C			VERSION	STATUS	REVISION	VERSION	STATUS	REVISION		
WIDTH	8.5"					02	RE	B	02	RE	C		

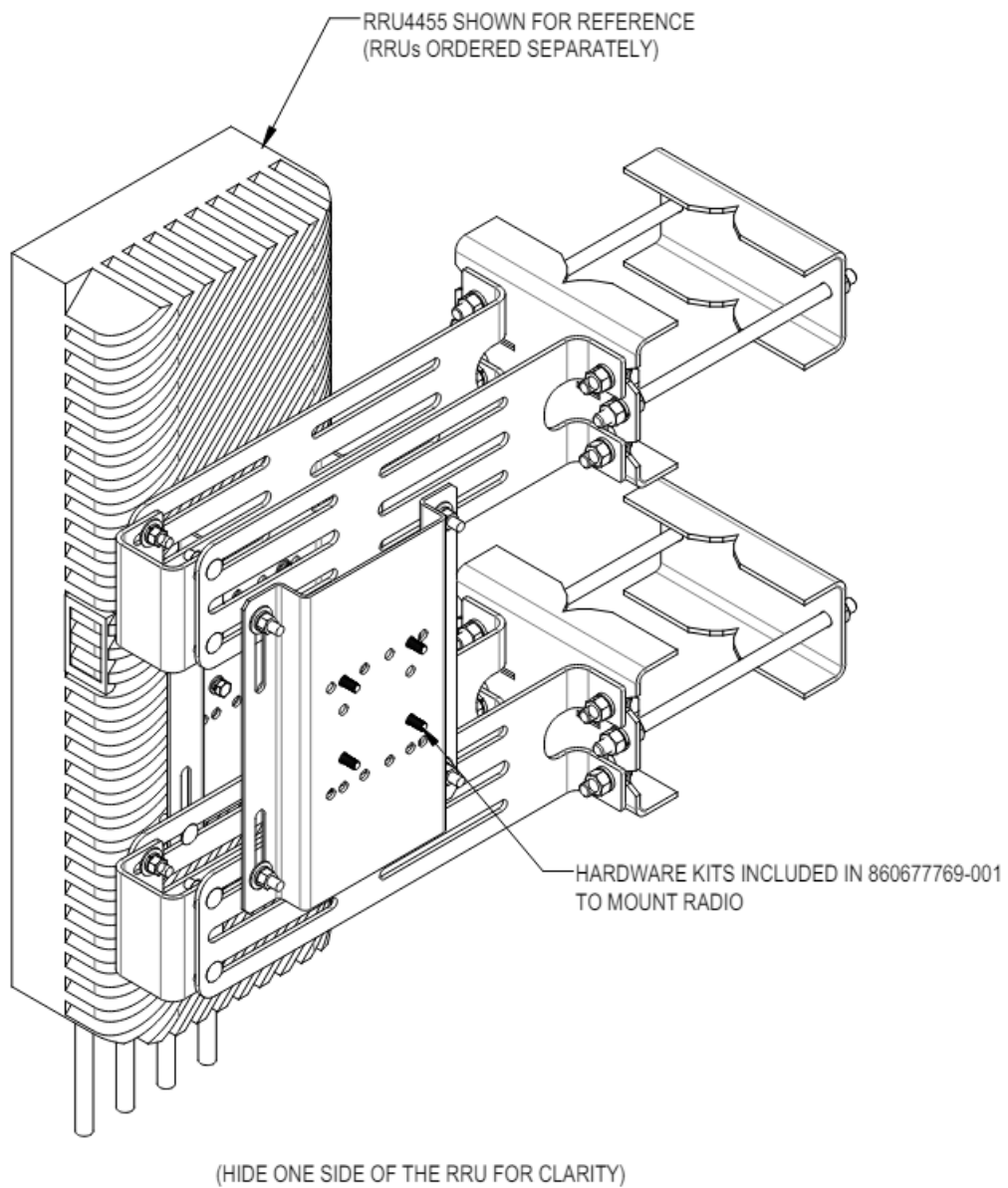
COMMSCOPE, INC. OF NORTH CAROLINA					
TITLE					
B2B FAST ACCESS RRU MOUNT					
SIZE	SCALE	DOCUMENT NO.			
C	1:8	RR-FA2-A			
		DRAWING			SHEET 2 OF 3
		VERSION	STATUS	REVISION	
		02	RE	C	

COMMSCOPE, INC. OF NORTH CAROLINA					
TITLE					
B2B FAST ACCESS RRU MOUNT					
SIZE	SCALE	DOCUMENT NO.			
C	1:8	RR-FA2-A			
		DRAWING			SHEET 3 OF 3
		VERSION	STATUS	REVISION	
		02	RE	C	

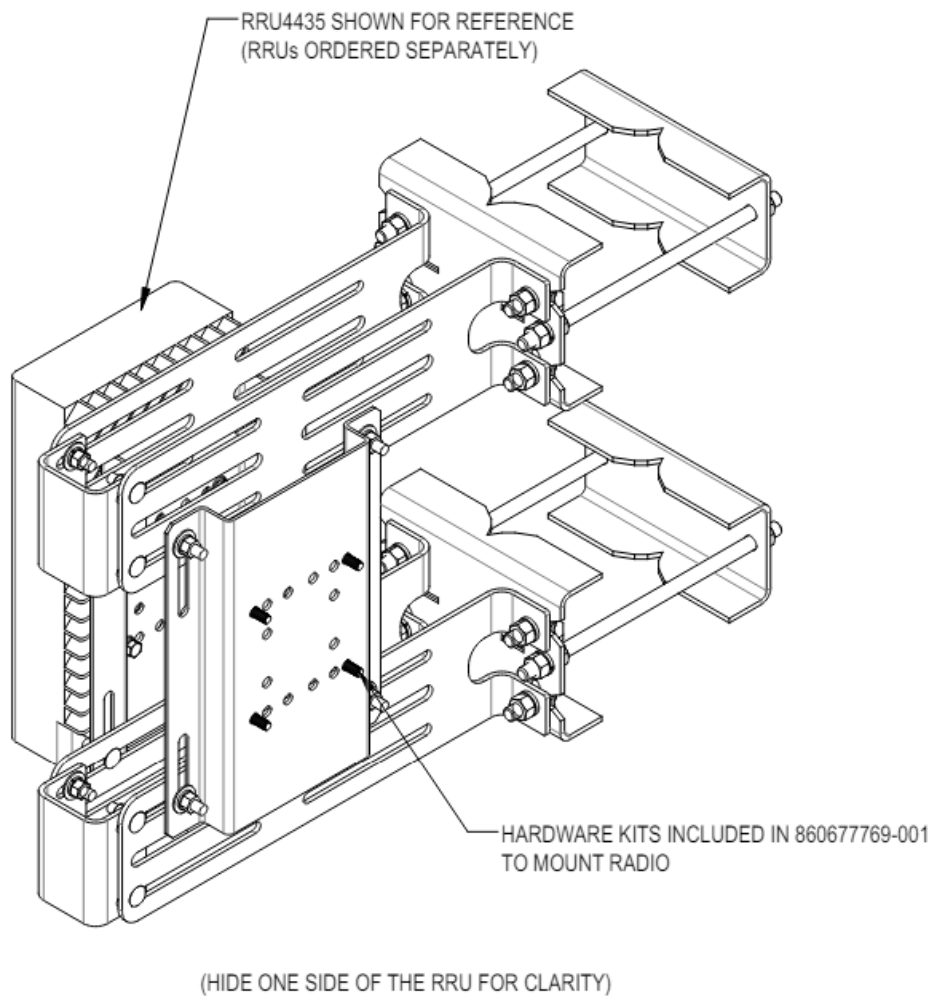
INSTALLATION



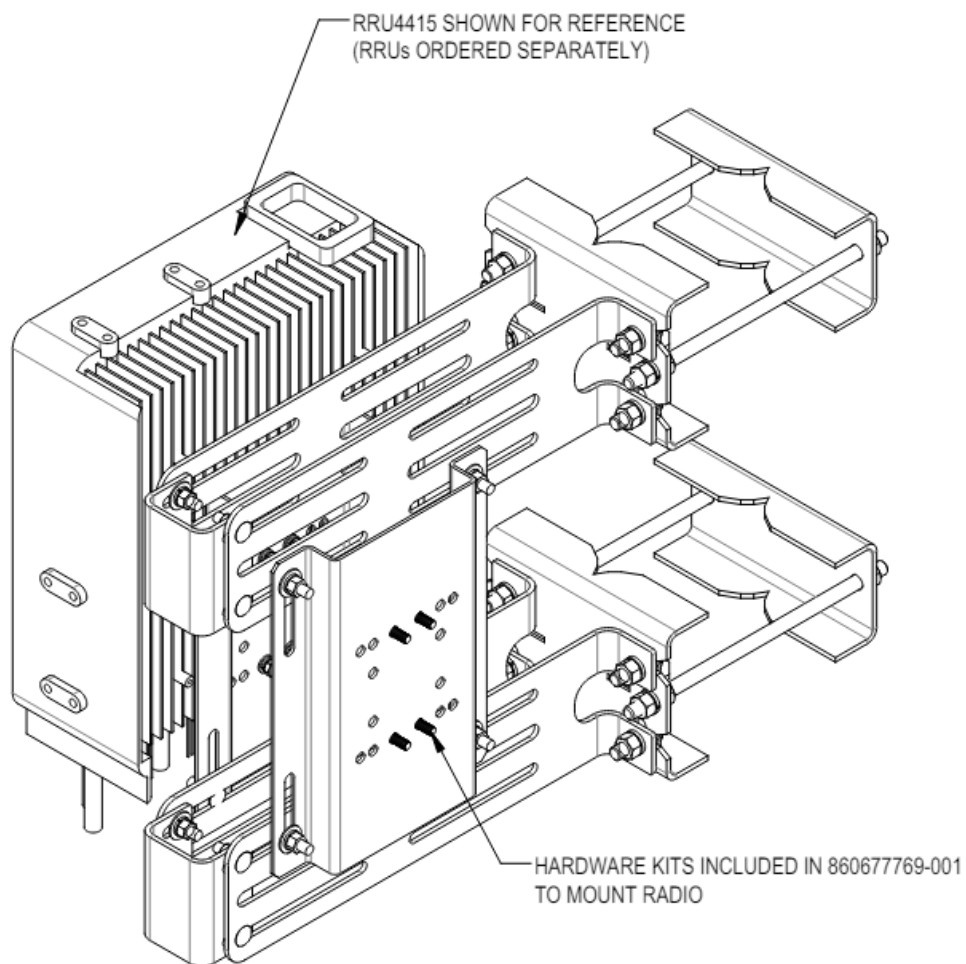




MOUNT BRACKET MTM101721-510-00 IN 860677769-001 TO RRU FIRST, THEN ATTACH TO RR-FA2

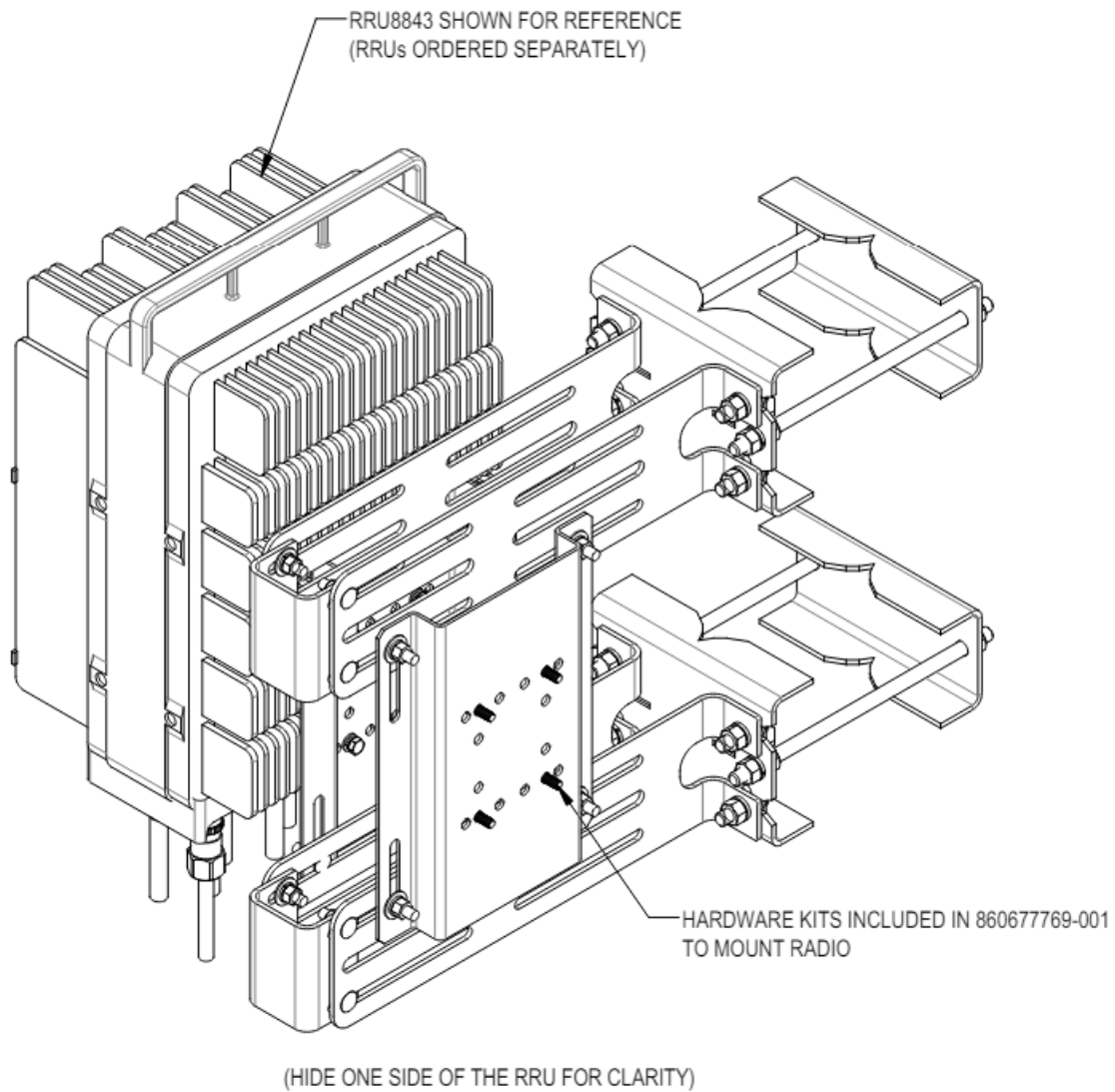


MOUNT BRACKET MTM101721-510-00 IN 860677769-001 TO RRU FIRST, THEN ATTACH TO RR-FA2



(HIDE ONE SIDE OF THE RRU FOR CLARITY)

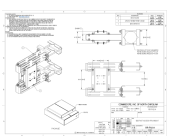
MOUNT BRACKET MTM101721-510-00 IN 860677769-001 TO RRU FIRST, THEN ATTACH TO RR-FA2



MOUNT BRACKET MTM101721-510-00 IN 860677769-001 TO RRU FIRST, THEN ATTACH TO RR-FA2

©2024 CommScope, Inc. Confidential.

Documents / Resources



[COMMScope BRR-FA2-A Fast Access Rru Mount](#) [pdf] Installation Guide
BRR-FA2-A Fast Access Rru Mount, BRR-FA2-A, Fast Access Rru Mount, Access Rru Mount, R
ru Mount, Mount

References

- [Product Patent](#)
- [User Manual](#)

[Manuals+](#), [Privacy Policy](#)

This website is an independent publication and is neither affiliated with nor endorsed by any of the trademark owners. The "Bluetooth®" word mark and logos are registered trademarks owned by Bluetooth SIG, Inc. The "Wi-Fi®" word mark and logos are registered trademarks owned by the Wi-Fi Alliance. Any use of these marks on this website does not imply any affiliation with or endorsement.