



COMMAX CDL-107U Smart Deadbolt Bluetooth Door Lock Touchscreen Keypad User Manual

[Home](#) » [COMMAX](#) » COMMAX CDL-107U Smart Deadbolt Bluetooth Door Lock Touchscreen Keypad User Manual 

COMMAX CDL-107U USER MANUAL

Contents

- [1 CDL-107U Smart Deadbolt Bluetooth Door Lock Touchscreen Keypad](#)
- [2 Package Contents](#)
- [3 Opening the Door with a Passcode](#)
- [4 Opening the Door with a Smartphone NFC Card](#)
- [5 Delete Individual Registered Card](#)
- [6 Auto Lock Setting](#)
- [7 Manual Lock Setting](#)
- [8 Automatic Re-Lock Feature](#)
- [9 Double Authentication Mode Off](#)
- [10 Registration Authentication Mode Off](#)
- [11 Delete Individual Guest Passcode](#)
- [12 Outgoing Security Mode Feature](#)
- [13 Internal Security Mode Feature](#)
- [14 Volume Control Setting](#)
- [15 BLE Setting and Manual](#)
- [16 Regulatory Compliance](#)
- [17 Specification](#)
- [18 Documents / Resources](#)
 - [18.1 References](#)

CDL-107U Smart Deadbolt Bluetooth Door Lock Touchscreen Keypad



WARNING

No door lock can guarantee its own security or safety by itself.

You should contact an authorized locksmith or other security specialist to reduce the risk of intrusion from damage caused by force or technical means and to enhance security.

Thank you for purchasing CDL-107U

This manual is designed to make the product more convenient and safe to use.

Please read it carefully before using this product.

WWW.COMMAX.CO.KR

Package Contents

- Exterior Unit : Identified by the keypad screen, installed on the outer part of door
- Interior : Identified with the battery cover, installed on the interior part of door Unit
- Number Pad : Displays numbers for password entry and recognizes compatible RFID objects
- Emergency Power Contact : Power can be supplied from the outside using a 9 Volt battery
- Registration [R]Button : This button allows you to access all the functions and settings for this door lock
- Thumb-Turn :You can manually unlock and lock your deadbolt using the turn lever
- Lock Button: Used for locking when in “Manual Lock Mode” and also used for the “Double Lock” feature
- Magnetic Sensor: This sensor allows the doorlock to know when the door is closed so that it can automatically lock
- Battery Cover: Battery cover of interior unit
- Battery: 4 pcs of AA 1.5V LR6 Alkaline Battery
- Interior Plate: This plate is used to hold the exterior panel onto the door. It is also used to connect the interior panel to the door

- Card: ISO14443A-Part3 RFID Card
- M4X40mm Screw (3EA) : These screws are used to hold the exterior panel to the “Interior Plate”
- M4X6mm Screw (3EA) : These screws are used to hold the Interior Unit to the “Interior Plate”
- 4X20mm Screw Tapping (2EA) : Used to securely attach the magnetic sensor to the door frame
- Magnet: Do not misplace! This piece is crucial for your automatic locking function. Losing it may also cause other malfunctions.
- User Manual: Instruction for users
- Install Guide: Instruction for installation

**CAUTION**

As with any radio-based technology, it should be noted that the accuracy and reliability of the COMMAX lock's in- and outside sensor cannot be guaranteed. Users should not rely solely on the COMMAX lock's sensor for security purposes and should always use caution. This manufacturer assumes no responsibility for incorrect results or damages resulting from the use of the COMMAX lock's sensor. Certain home configurations may impede the COMMAX lock's sensor more than others.

**CAUTION**

The setting and operation of each function may not be able to be implemented due to the loss of function (malfunction), natural disaster, arbitrary change, etc. depending on the installation environment and frequency of use.

Please read User Manual and Install Guide before using the product

**CAUTION**

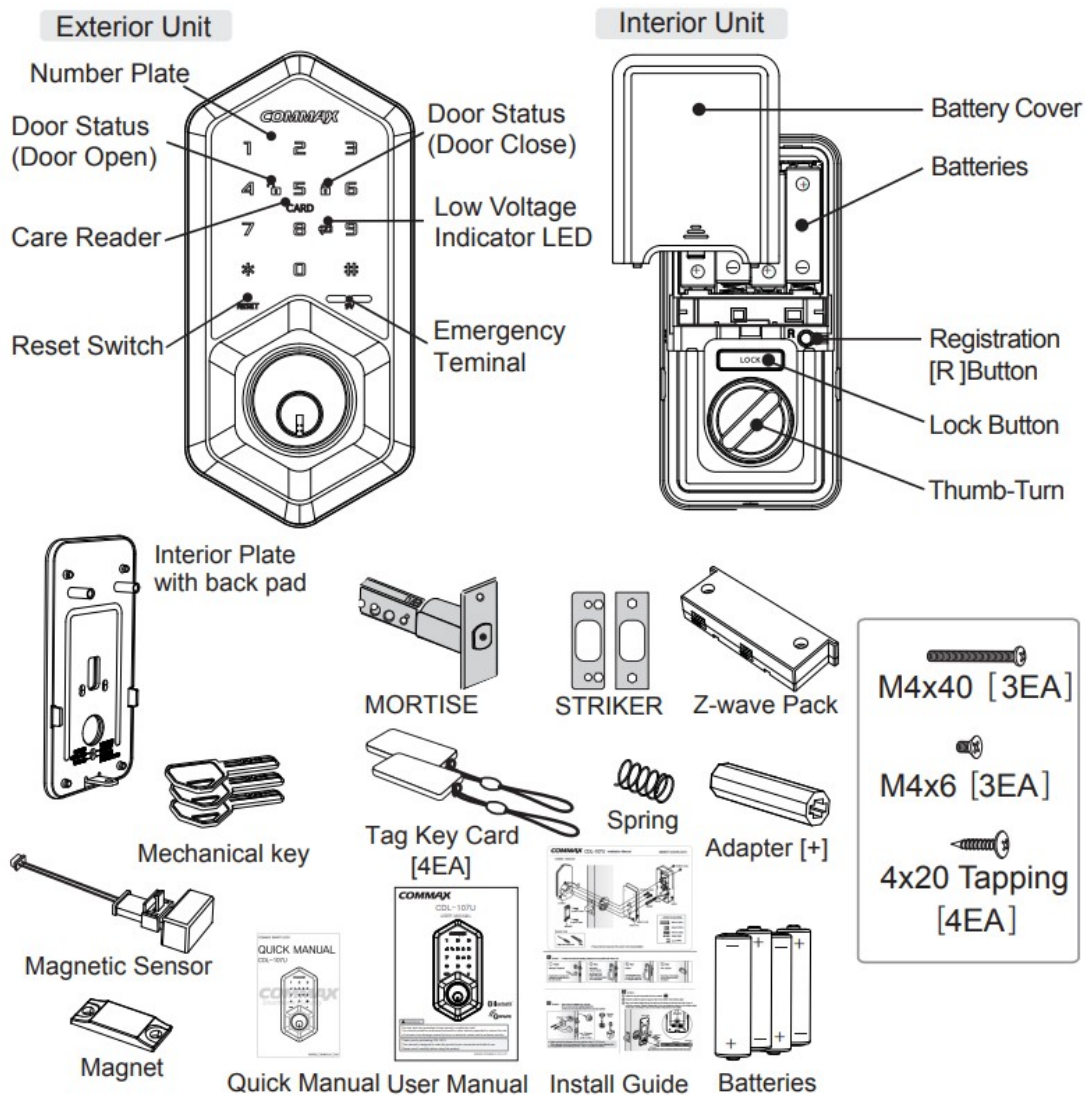
Please be careful with personal information by using BLE

**CAUTION**

Please observe the following precautions in order to avoid injury or damage to property

- Do not install outdoors in the rain
- Do not disassemble or reassemble it as it may cause malfunction.
- Do not use any tools to subject the product to excessive force
- Your password and card should be managed carefully
- Please make sure that the door is properly locked when you leave
- Do not spray directly with water or clean it with chemicals such as benzene, thinner, or alcohol

Package Contents

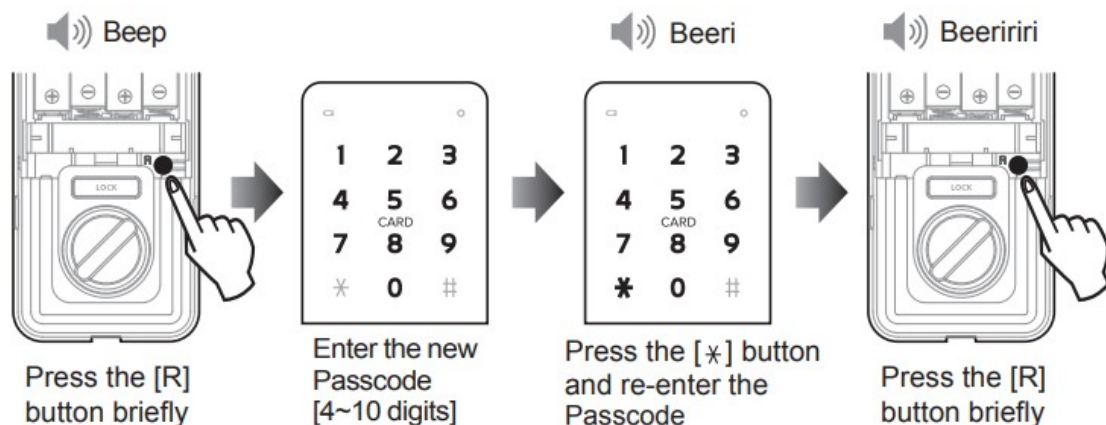


CAUTION

- Be sure the door is open when you first register or change the passcode as the door may accidentally lock during the process.
- Please change your passcode regularly and re-register your passcode immediately if you think someone else has gained access to it.
- If you lose any of the registered cards, please delete all registered cards immediately.

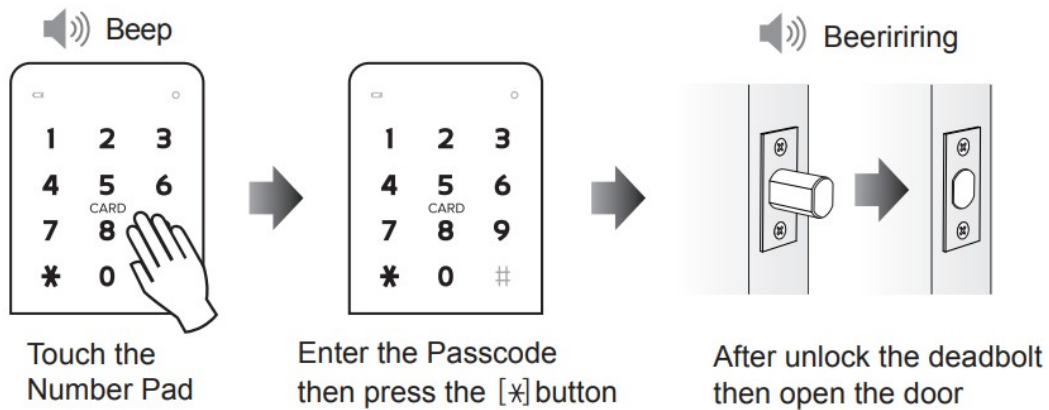
Registering Master Passcode [4~10 Digits / Default: 1234]

Register the passcode to be used. Only one master passcode can be registered.



⚠ If you register a new passcode, the existing registered passcode will be automatically changed

Opening the Door with a Passcode

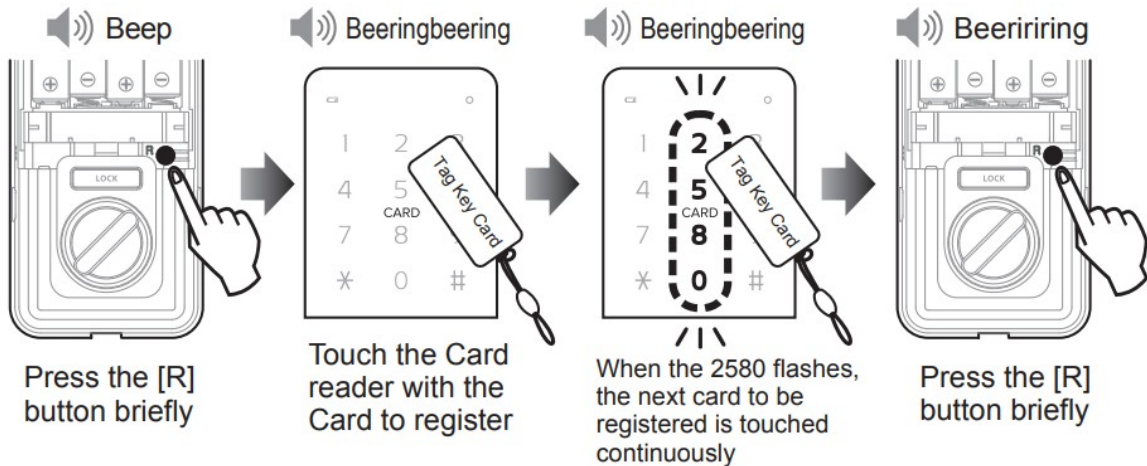


i Reference: Anti-Peek Feature

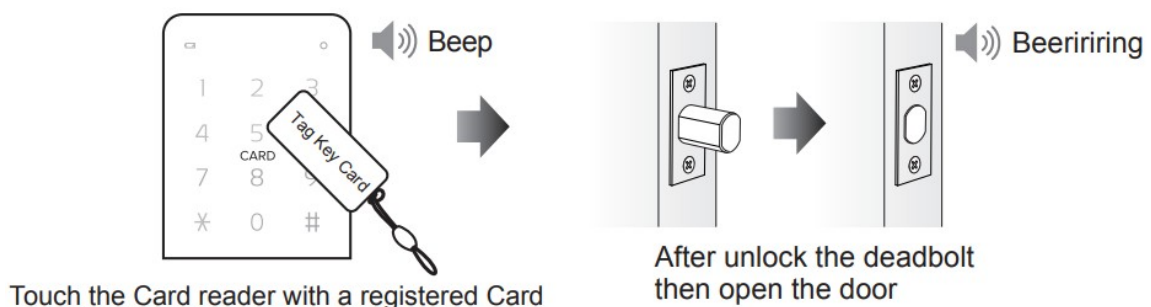
- If you are concerned about passcode exposure, you may enter a random number before entering your passcode. [up to 20 digits included passcode] i.e) (up to 16 random digits) + (your passcode: 1234 [*])
 - In order to use OTP, BLE Pack must be installed to enable unlock on OTP.
- Please refer to enclosed BLE registration and user manual

Registering a RFID Card or Key Tag

Up to 30 RFID user cards can be registered including smartphone NFC.
The same card will not be registered twice during registration.



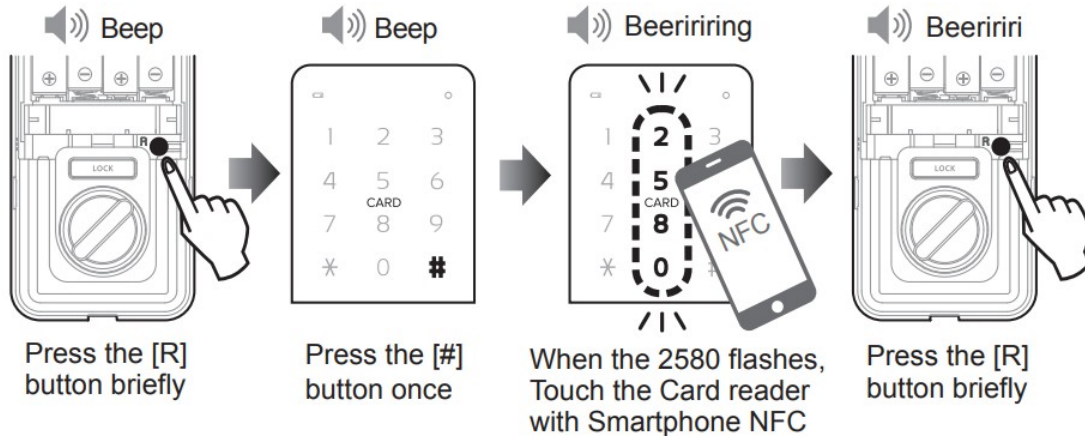
Opening the Door with a RFID Card or Key Tag





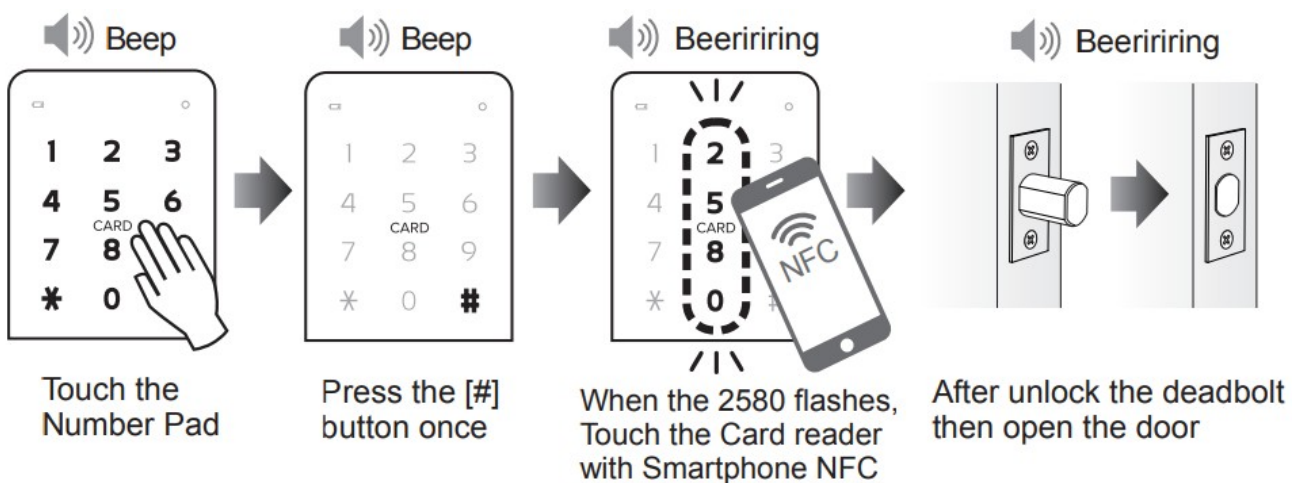
- If the card surface is metallic, the recognition rate may be significantly degraded or not recognized.
- The card may not be recognized depending on the smartphone attachment.
- When using Sticker Type Card, you need to turn off NFC function on the smartphone.

Registering Smartphone NFC Card [Only available with BLE models]

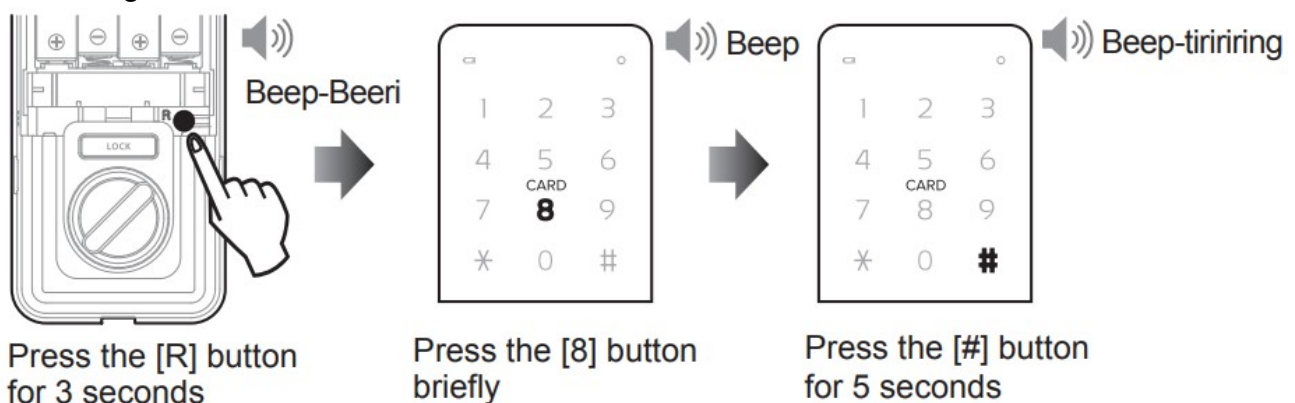


To use smartphone nfc feature, install the BLE app, enable nfc mode, wake up your smartphone and use it.

Opening the Door with a Smartphone NFC Card

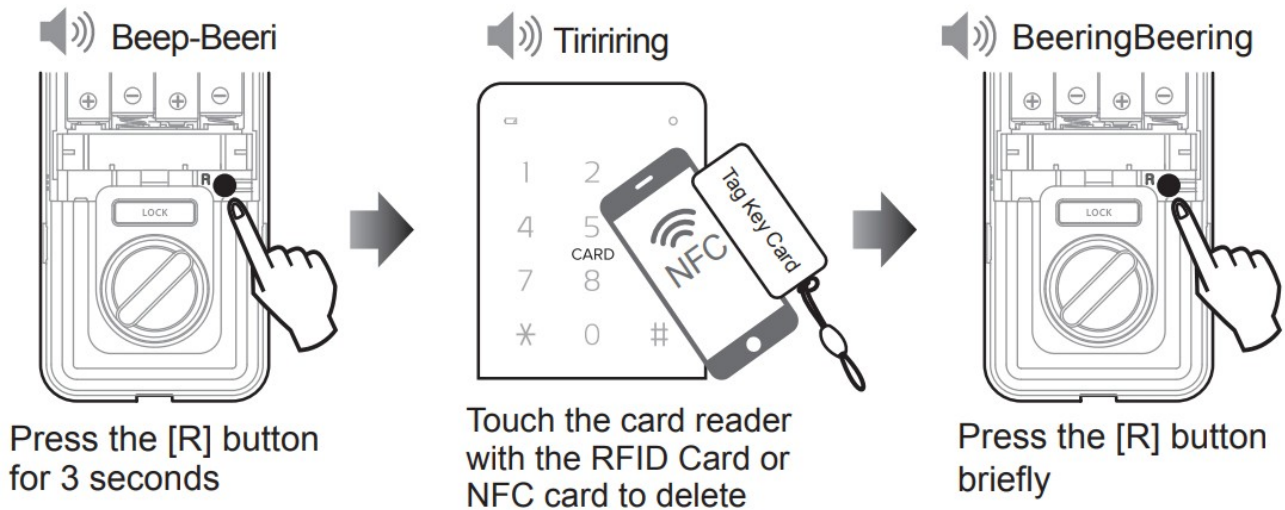


Delete all Registered Cards



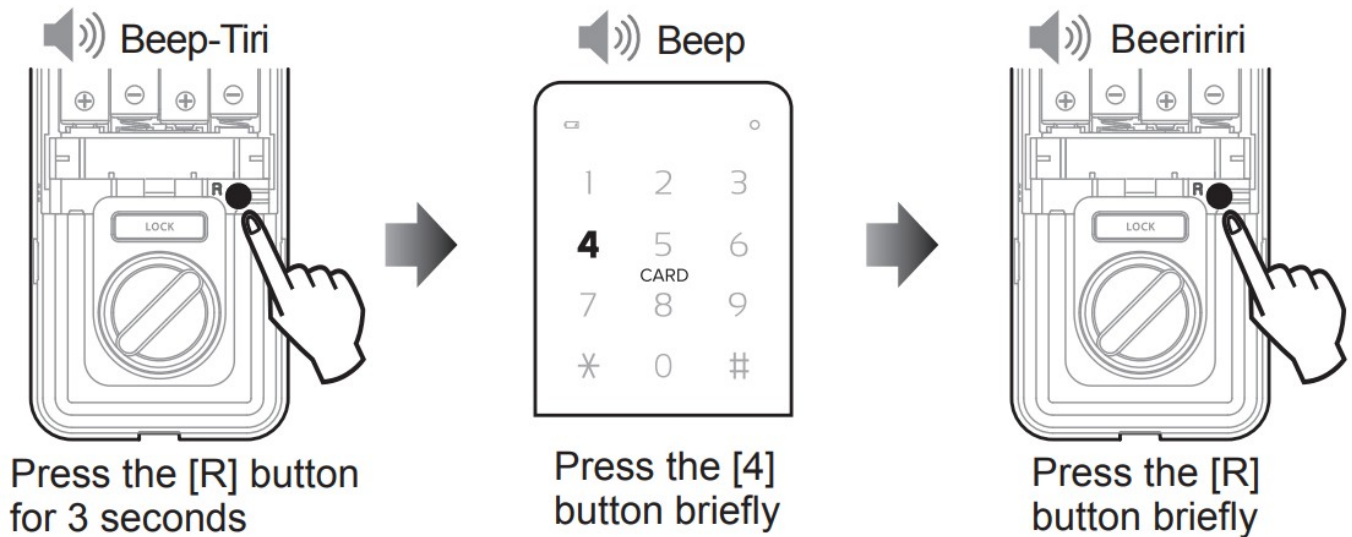
! Please delete and re-register your cards if you lost a/any RFID Card(s) for security purposes.

Delete Individual Registered Card



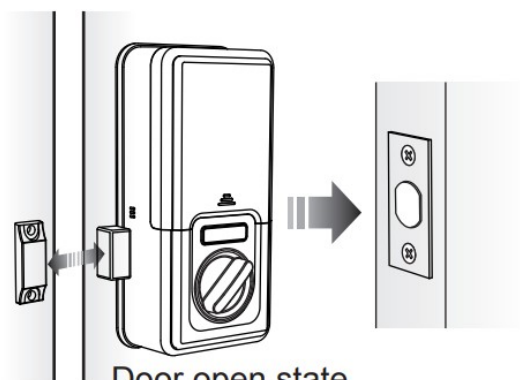
- Please keep your passcode and card registration safe.
- If the registered passcode or card is deleted or not recognized, it is recommended to register or reset immediately.

Auto Lock Setting

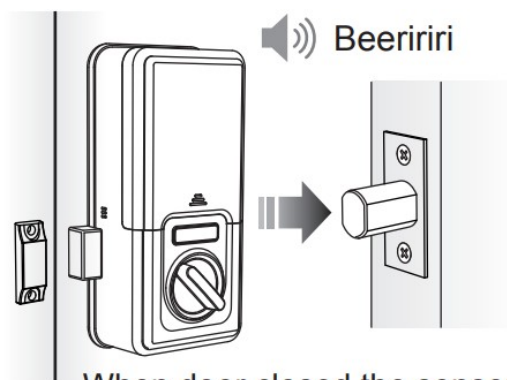


If you keep the door unlocked after setting the auto lock, the door unlock beeps twice

Auto Lock Feature



Door open state
[Distance between
the sensor and the magnet]



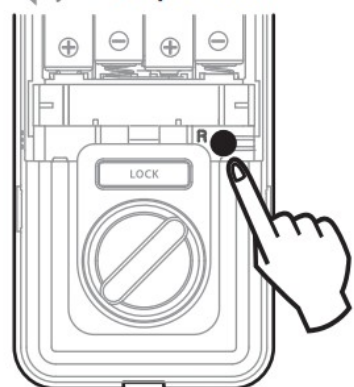
When door closed, the sensor recognizes
the magnet and automatically locks
in 2 seconds.



The door lock sensor may not operate due to malfunction of the magnet sensor.
Be sure the door is locked when the door is closed.

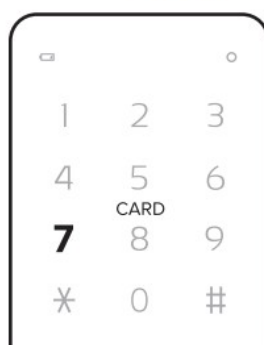
Manual Lock Setting

Beep-Beeri



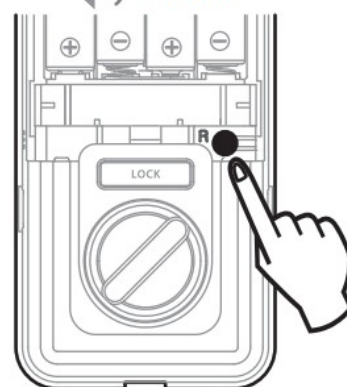
Press the [R] button
for 3 seconds

Beep



Press the [7]
button briefly

Beeri

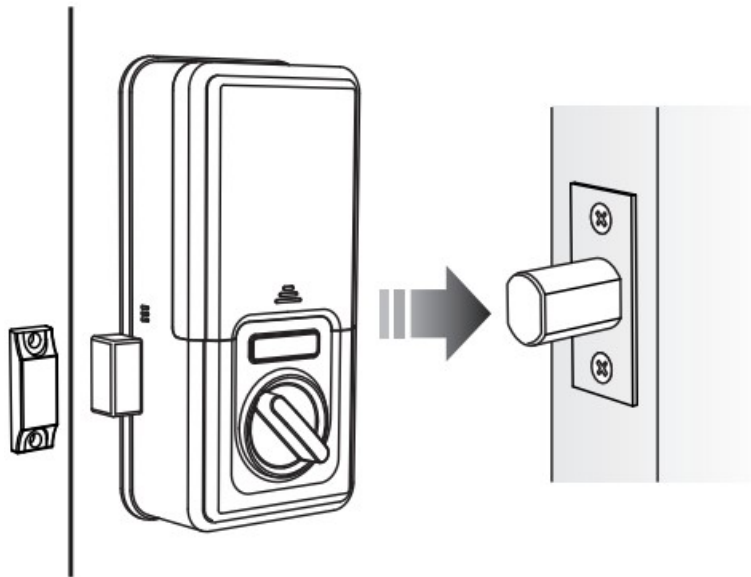


Press the [R]
button briefly



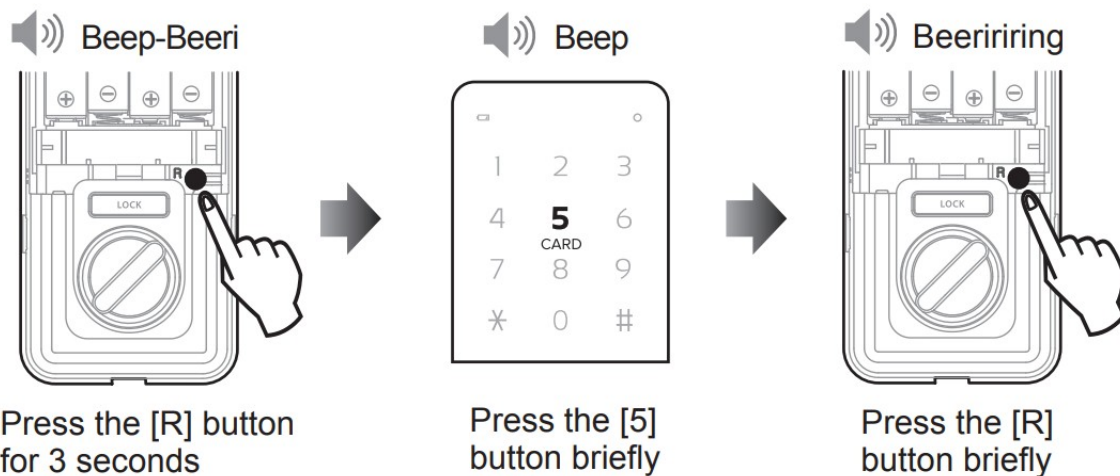
the magnetic sensor does not sound when the door is closed, the door does not lock.
In order to lock the door, touch the number plate for 2 seconds or thumb-turn to lock the door when closing the door.

Automatic Re-Lock Feature



If you do not open the door after unlocking it with a passcode or card, the door locks automatically after 7 seconds.

Double Authentication Mode Setting(On) [Passcode and Card must be registered]

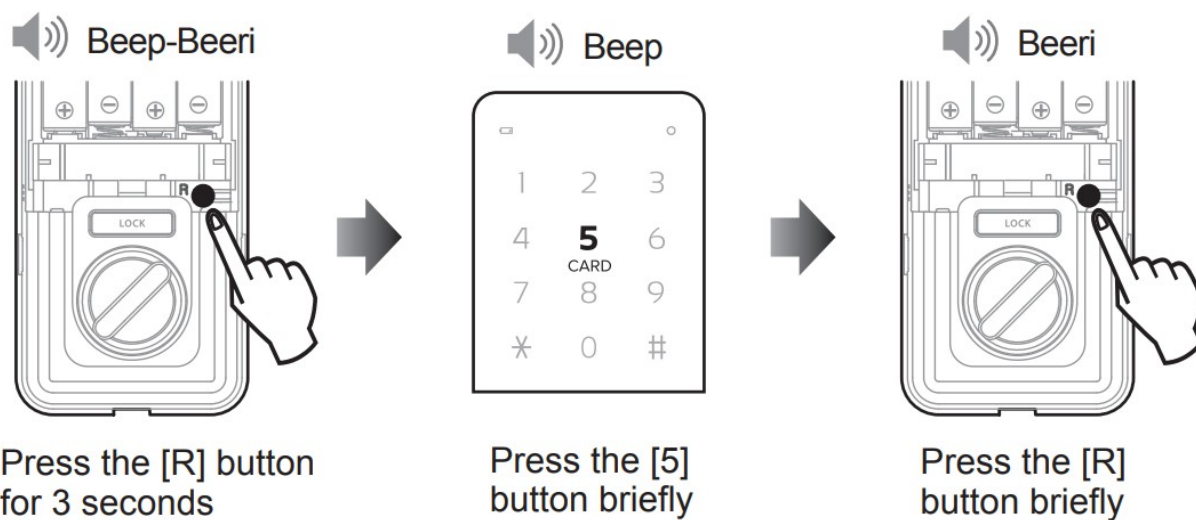


i After double authentication mode is set up, enter the password first and then touch the card to unlock the door.

i If the card isn't registered, Double authentication mode is not set up.

i If you delete registered card, Double Authentication mode is set off

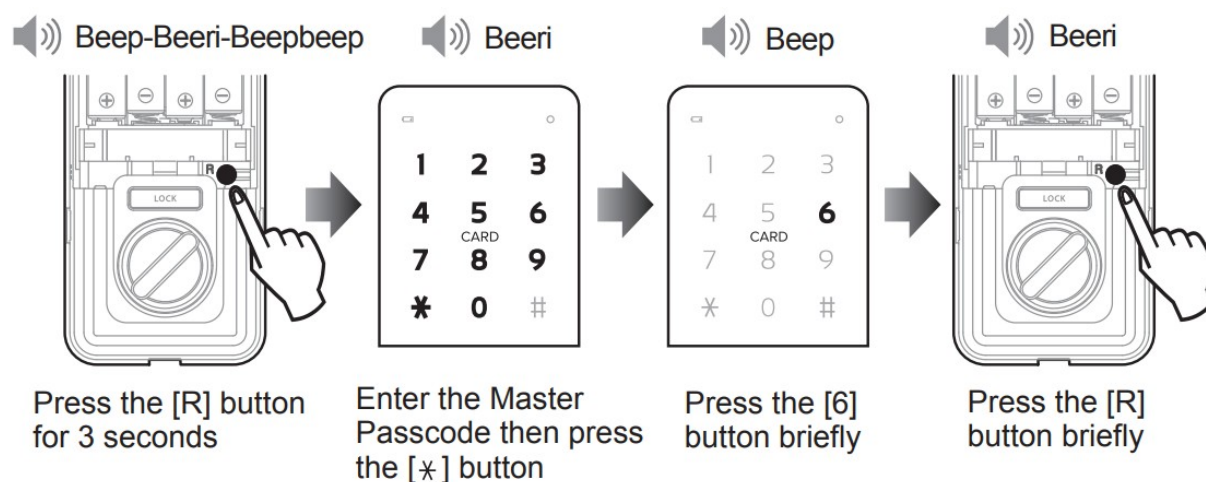
Double Authentication Mode Off



Registration Authentication Mode Setting (On)

i If registration authentication mode is set up, you will hear 2 beep sounds when you press the [R] button.

Registration Authentication Mode Off

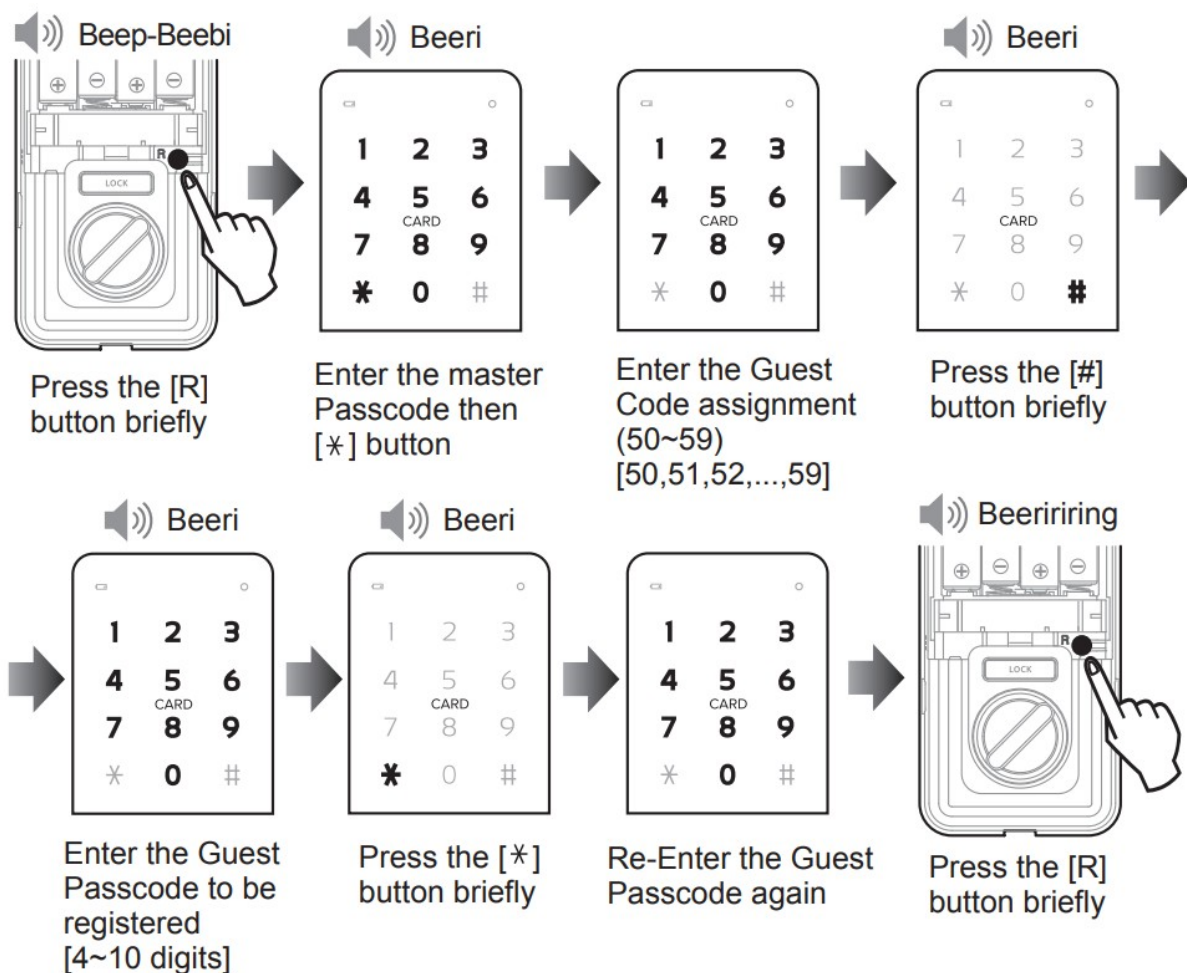


! If you turn off registration authentication mode, registered guest passcode will be automatically deleted.

! [When the registration authentication mode is on]

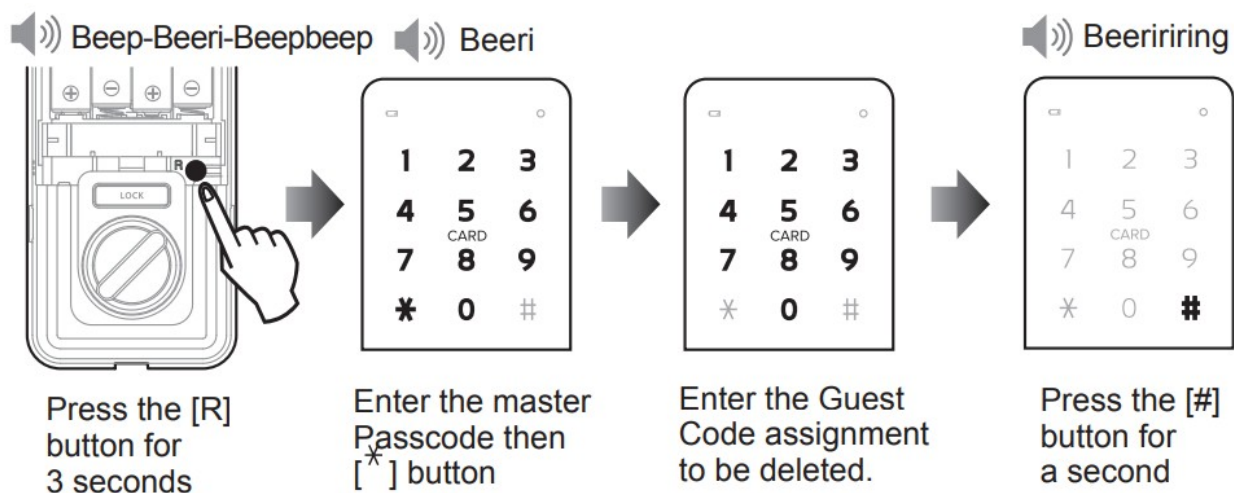
- The guest passcode function is activated and the double lock mode is automatically off
- Press the [R] button first, then enter the passcode and touch [*] key to enter registration mode

Registering Guest Passcode [Maximum10 Guests]

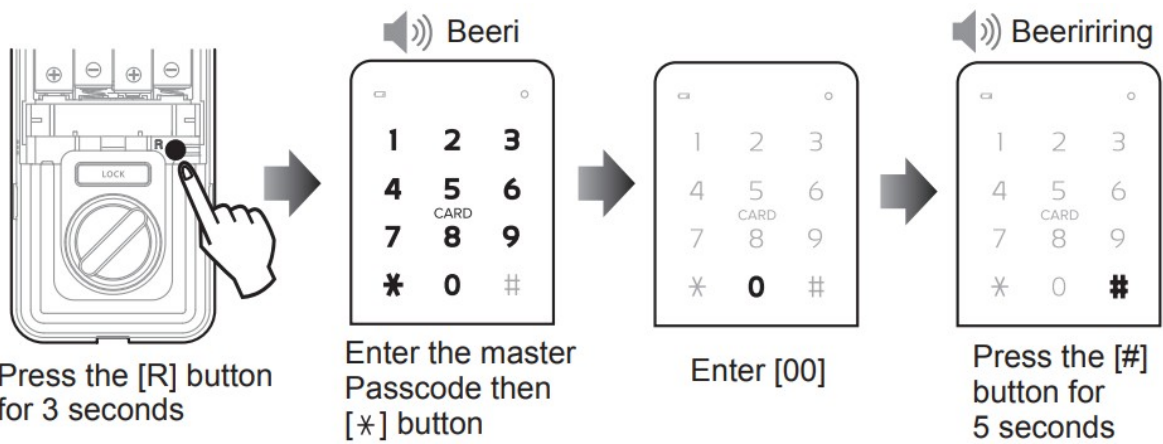


- You can not set the any function with the guest passcode, only unlock the door by the guest passcode.
- When Registration authentication mode is set up, it cans use guest passcode.
- If you register a new guest passcode in the existing registered address, the existing guest passcode will be deleted.

Delete Individual Guest Passcode

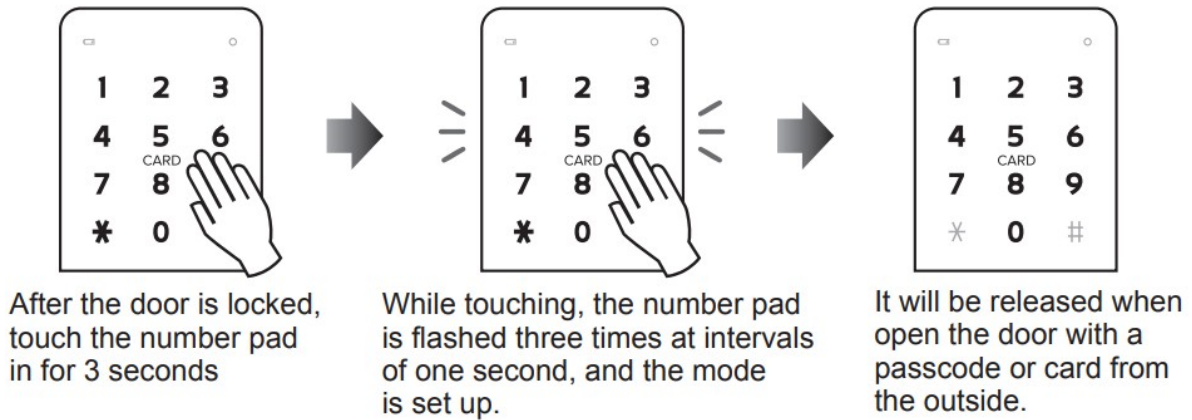


Delete All Guest Passcode



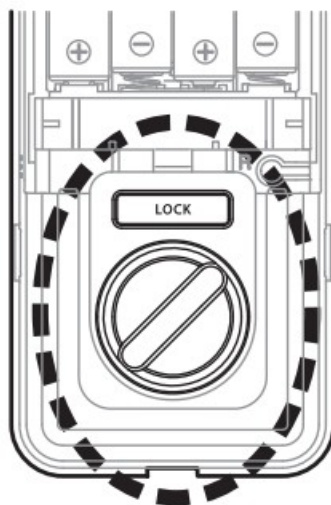
! If you turn off registration authentication mode, registered guest passcode will be automatically deleted.

Outgoing Security Mode Feature



! An alarm sounds when someone try to open the door by Thumb-Turn from the inside. It does not work when the magnetic sensor is faulty, malfunction or not recognized the magnet.

Internal Security Mode Feature



Beep-Beerirring

- To Activate(ON):

Press and hold the [LOCK] button for 3 seconds while the door is locked.

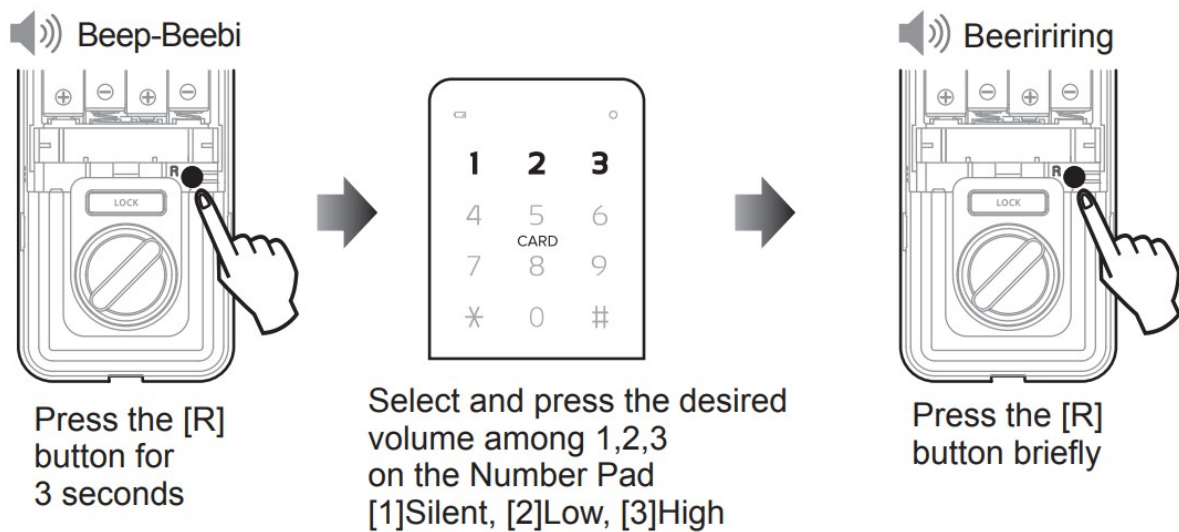
- To OFF:

Press the [LOCK] button briefly or unlock the door by Thumb-Turn then open the door

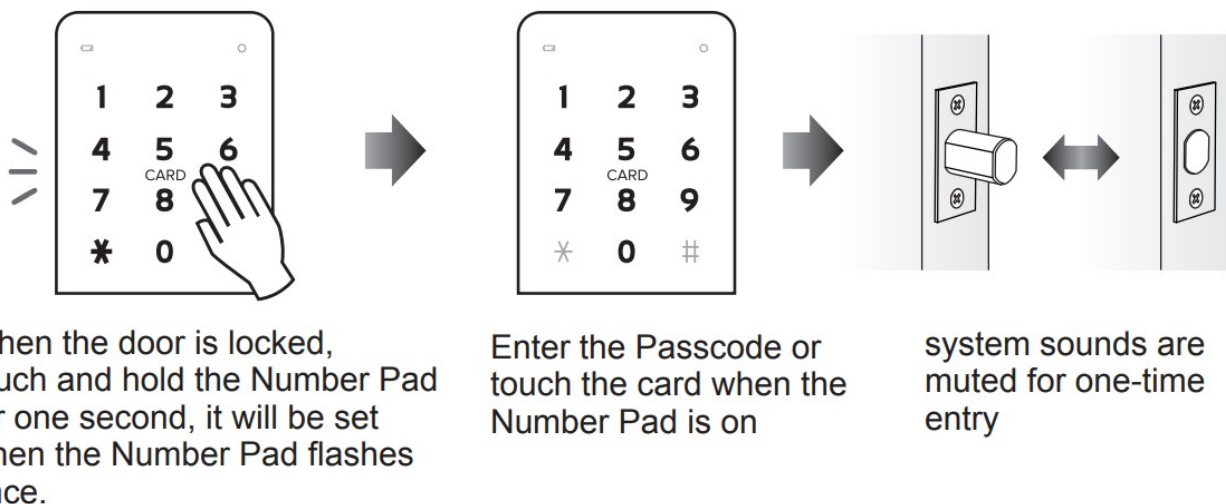


- You can not unlock the door with a registered passcode or card from the outside.
It does not work when the magnetic sensor is faulty, malfunction or not recognized the magnet.
- It can not be released even if the door is opened with the emergency key.

Volume Control Setting



Etiquette Mode Feature



It is one-time function, It will operate normally with the volume set after unlock and lock the door

Anti-Peek Feature [Hidden Passcode]

If you are concerned about passcode exposure, you may enter a random number before entering your passcode. [up to 20 digits included passcode] i.e) If your passcode is 1234: (up to 16 random digits) + (your passcode: 1234

[*])



High Temperature Alarm

- If an alarm occurs during an internal fire or a high temperature, the door will automatically unlock.
- The alarm sounds for 3 minutes continuously. [Inside temperature : 158 F 41 F]
- Temperature may vary depending on installation environment
- It will be off when it is authenticated by registered passcode or cards.
- It will be off when the battery is removed.



Trespass Alarm

- When the door is forcibly unlocked or abnormally unlocked, an audible alarm sounds for 3 minutes continuously.
- It will be activated after 7 seconds from door lock.
- It will be off when it is authenticated by registered passcode or cards.
- It will be off when the battery is removed.



Passcode Error Locked Alarm

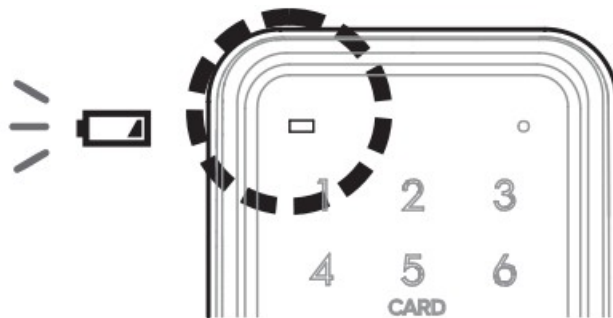
- An error sounds when authentication is attempted with an unregistered password or card, if 5 times authentication errors occur, an alarm sounds and all operations stop for 3 minutes.



Low Voltage (Battery) Notification Alert

- If a battery shortage is detected, the alarm sounds during unlock or lock and the low voltage red light indicator on the number pad will blink.
- Replace the batteries immediately
- If the battery is fully discharged, open the door with Emergency Power Contact and 9V battery(6LR61)

🔊 Tiringtiring-Tiringtiring-Tiringtiring

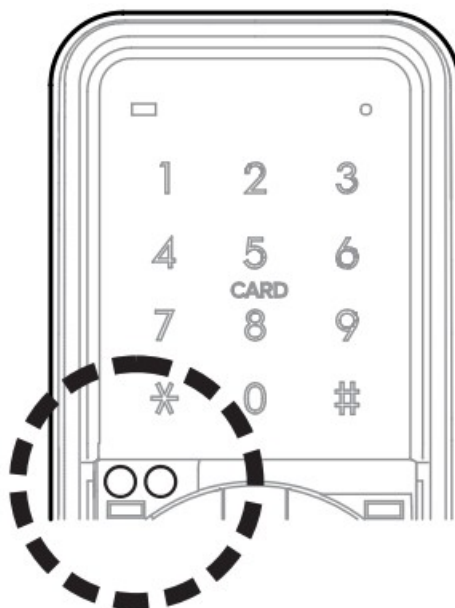


Deadbolt Jam Warning

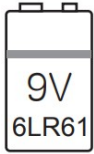
- If the deadbolt does not work properly cause installed incorrectly or mechanically, the alarm sounds when unlocking or locking the door.

🔊 Tiringtiring-Tiringtiring-Tiringtiring

Emergency Power Contact



- Contact the 9V Battery(6LR61) to Emergency Power Contact
- Enter the passcode or card in contact state



9V Battery(6LR61)
[Not Included]

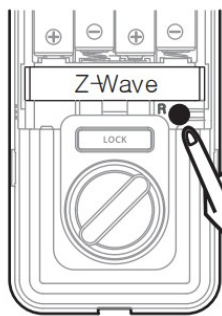


When buying a 9V battery, please purchase replace batteries together
[Change Batteries Spec : 1.5V LR6 AA Size ALKALINE(4ea)]

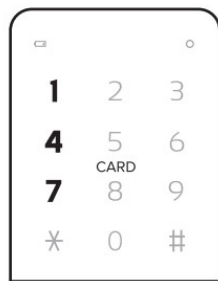
Z-Wave Activation [Module Sold Separately]

While your Hub is in pairing mode, follow these steps. #Z-Wave Module must be intalled

Beep-Beeri-Beeribeeri

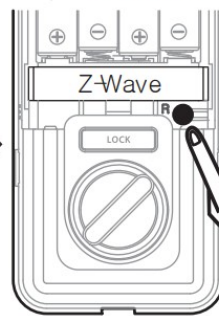


Press the [R] button
for 6 seconds



Press the [1,4,7]
button sequentially

Beeririri



Press the [R]
button briefly



Connecting
Communication
between Z-wave
Module and
Smarthome Gateway



If the communication connection is not established within 10 seconds, the registration will be canceled.
Please try again.



When Registration Authontication mode is set, holding the button for 6 seconds will flash the number pad
twice.

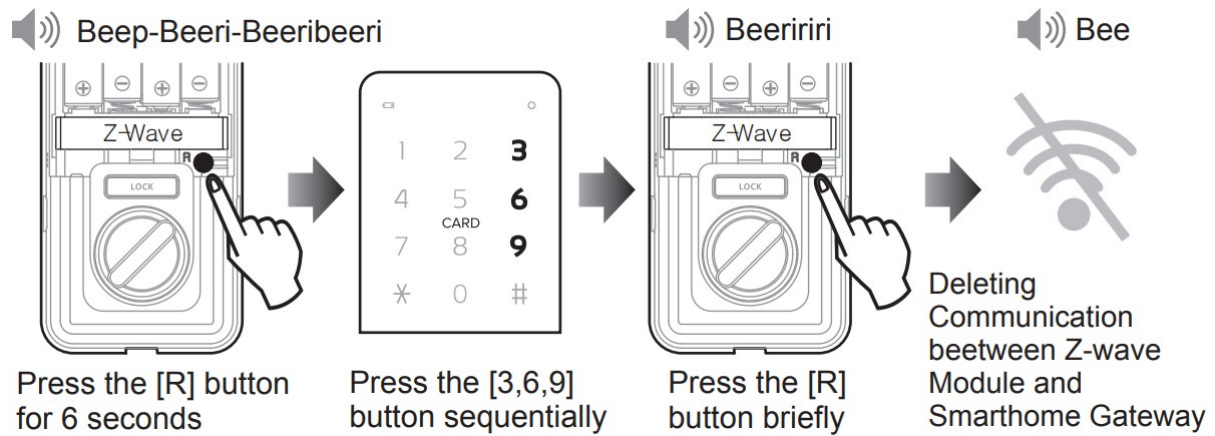


When the door unlock / lock using communication, it may not perform the operation due to communication
error. Please check unlock / lock status.

Controll using Z-Wave through Smart Home APP

- Press [Unlock] button to unlock from Smart Home APP
- Press [Lock] button to lock from Smart Home APP

Delete Z-Wave Communication



- The CDL-107U Z-Wave is a secure electronic door lock that supports the Z-Wave Plus standard, which is compatible with earlier versions of Z-Wave.
- A security enabled Z-Wave controller must be use. The CDL-107U supports the standard security S0 and the new security standard S2.
- The CDL-107U can be included and operated in any Z-Wave network with other Z-Wave certified devices from other manufacturers and/or other applications.


All non-battery operated nodes within the network will act as repeaters regardless of vendor to increase reliability of the network

BLE(Bluetooth Low Energy) Setting [Optional]

✳ BLE module must be installed

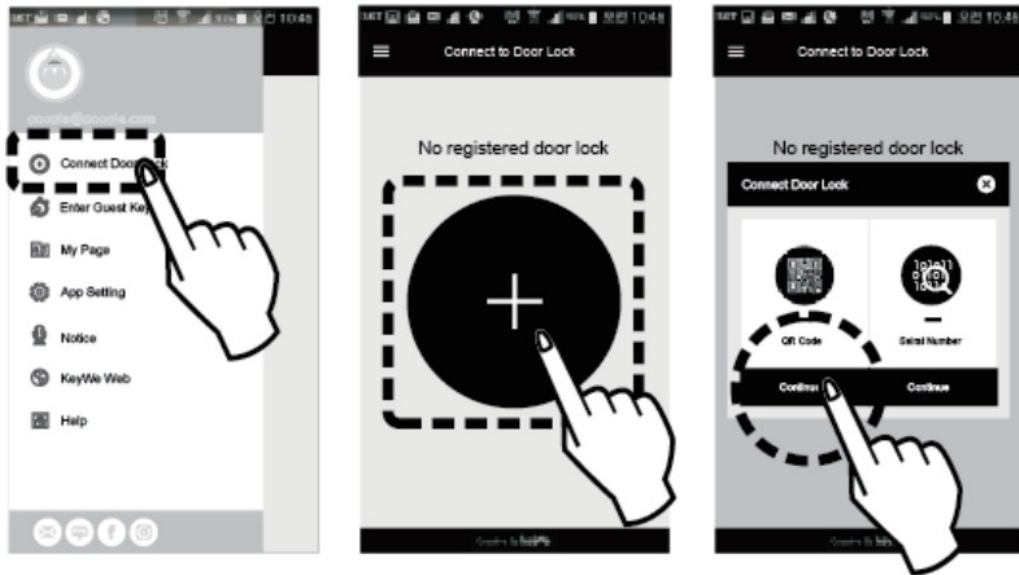
- Press [Unlock] button to unlock from Smartphone APP(KeyWe)
- Press [Lock] button to lock from Smartphone APP(KeyWe)

BLE Setting and Manual

1. Search and download APP[KeyWe] from Apple APP Store or Google Play Store 

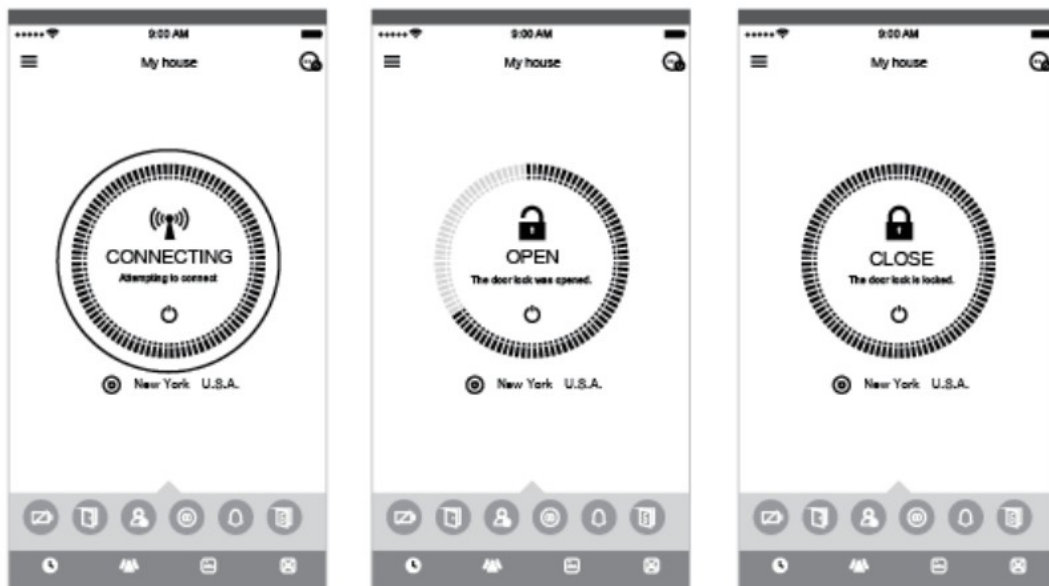


2. Open the KeyWe APP and sign up with email
3. Door Lock Registration
 - Open the KeyWe APP and sign in
 - Press the Menu button in the upper left corner and select the Connect Door Lock
 - Click the [+] button and click the Continue on QR Code
 - Scan the QR Code inside of the battery space to register BLE module
 - Register door lock name and location



4. Controll through KeyWe APP

- Open the KeyWe APP and connect the BLE module
- When the connection is complete, it displays the status of the door lock.
- Pressing the center of the screen changes the state of the door lock.



Other Functions

- Setting Smart Phone NFC in the KeyWe Menu and APP Setting
- Setting OTP(One time passcode) in the Door Lock Setting
- Deleting Door Lock in the Door Lock Setting
- For more information on APP, refer to the following site.(FAQ->APP)

[http://keywe.thekeywe.com/index_kor.php]

※ Make sure Optional Module is installed

Z-Wave & BLE Code

The Z-wave or BLE information is enclosed in the box. Please attach it directly to the product or inside of the battery cover before or after registration.

! You can not re-register when you lose the code information. [Z-wave & BLE code] If connection is not established, re-insert the communication module or check the pins are damaged.

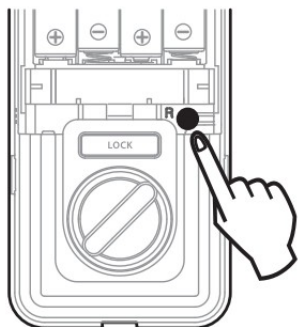
Soft Reset [All settings are reset except BLE & Z-Wave]

If you suspect that your security is weak due to the leakage of your password or the loss of your registered card, we will reset your registered password and card to improve security.

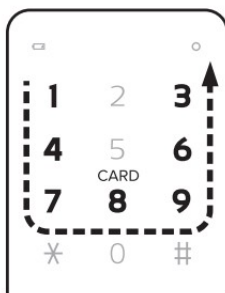
[When deleting BLE information, delete it from APP of registered smartphone.]

! If you do Soft Reset, all settings are reset except BLE & Z-wave information.

Beep-Beerri-Beeribeeri-Beeribeeri



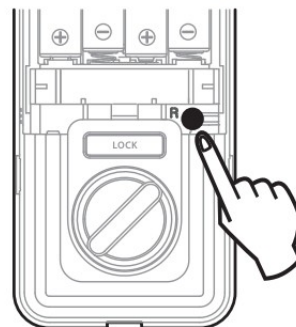
Press the [R]
button for 9 seconds



Press the [1,4,7,8,9,6,3]
button sequentially



Beerirring

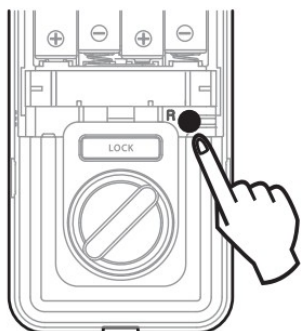


Press the [R]
button briefly

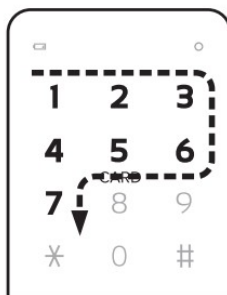
! It is recommended to use it when registering incorrectly while setting.

Factory Reset [All settings are reset except BLE]

Beep-Beerri-Beeribeeri-Beeribeeri



Press the [R]
button for 9 seconds



Press the [1,2,3,6,5,4,7]
button sequentially



Beerirring



Press the [R]
button briefly

! If you do Factory Reset, all settings are reset except BLE information.
It is recommended to use it when registering incorrectly while setting.

- Default Value of User & Factory Reset

Master Passcode	1234	※ After initialization, please register a new Passcode and Cards a gain.
Volume level	High [3]	
Auto/Manual Lock	Auto	
Double Auth	Off	
Registration Auth	Off	

Regulatory Compliance

This product complies with standards established by the following regulatory bodies:

- Federal Communications Commission (FCC)
- Industry Canada

FCC

This device complies with Part 15 of the FCC Rules. Operation is subject to the following two conditions:

1. this device may not cause harmful interference, and
2. this device must accept any interference received, including interference that may cause undesired operation.

This equipment has been tested and found to comply with the limits for a Class B digital device, pursuant to Part 15 of the FCC Rules. These limits are designed to provide reasonable protection against harmful interference in a residential installation. This equipment generates, uses, and can radiate radio frequency energy and, if not installed and used in accordance with the instructions, may cause harmful interference to radio communications. However, there is no guarantee that interference will not occur in a particular installation. If this equipment does cause harmful interference to radio or television reception, which can be determined by turning the equipment off and on, the user is encouraged to try to correct the interference by one or more of the following measures:

- Reorient or relocate the receiving antenna.
- Increase the separation between the equipment and receiver.
- Connect the equipment into an outlet on a circuit different from that to which the receiver is connected.
- Consult the dealer or an experienced radio/ TV technician for help.

IMPORTANT! Changes or modifications not expressly approved by the manufacturer could void the user's authority to operate the equipment.

FCC Radiation Exposure Statement

The equipment complies with FCC Radiation exposure limits set forth for uncontrolled environment. This equipment should be installed and operated with minimum distance 50 mm

Industry Canada

This device complies with Industry Canada licence exempt RSS standard(s). Operation is subject to the following two conditions:

(1) this device may not cause interference, and (2) this device must accept any interference, including interference that may cause undesired operation of the device.

This device complies with ISSED radiation exposure limits set forth for an uncontrolled environment and meets the ISSED radio frequency (RF) Exposure Guidelines. It is desirable that it should be installed and operated keeping the radiator at least 50 mm or more away from person's body.

Specification

Contents	Specification	Remark
Exterior	76.4mm (W) X 164.7mm(H) X 43mm (D) Polycarbonate & Al Diecasting	Volt: DC 6V Operating Temperature: -25~50 C High Temperature: 70 C 5 C Sensor Operating
Interior	71.3mm (W) X 151.8mm (H) X 39mm (D) Polycarbonate & Zn Diecasting	
Battery	4 X AA Alkaline 1.5V Batteries (LR6) (6V)	
Card	ISO14443A PART3 TYPE	



The battery life is 15 months when used 10 times a day.

※ Battery usage time may vary depending on the installation environment and frequency of use.

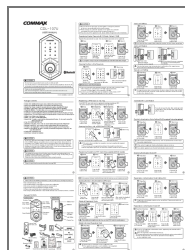
CDL-107U SETTING SUMMARY

(b): Press briefly

(#S): Press and hold for # seconds, (ex. (3S): Press and hold for 3 seconds)

Setting	Default	Summary	Page
Master Passcode Setting	1234	[R](b) -> Passcode -> [*] -> Passcode again -> [R](b)	4
Registering Card	None	[R](b) -> Touch Card (continuous registration) -> [R](b)	5
Delete Card		[R](3S) -> [8] -> [#](5S)	6
Auto Lock	Auto	[R](3S) -> [4] -> [R](b)	7
Manual Lock		[R](3S) -> [7] -> [R](b)	7
Double Auth Mode On	Off	[R](3S) -> [5] -> [R](b)	8
Double Auth Mode Off		[R](3S) -> [5] -> [R](b)	8
Registration Auth Mode On	Off	[R](3S) -> [6] -> [R](b)	9
Registration Auth Mode Off		[R](3S) -> Master Passcode -> [*] -> [6] -> [R](b)	9
Reg. Guest Passcode [in Reg. Auth mode On]	None	[R](b) -> Master Passcode -> [*] -> Guest code assignment [50~59] -> [#] -> Guest passcode to be reg. -> [*] -> Guest passcode again -> [R](b)	10
Delete Guest Passcode [Individual]	None	[R](3S) -> Master Passcode -> [*] -> Guest code assignment to be deleted [50~59] -> [#](1S)	10
Delete Guest Passcode [All]	None	[R] (3S) -> Master Passcode -> [*] -> [00] -> [#](5S)	11
Outgoing Security Mode On	Off	After the door is locked, touch and hold the number pad in for 3 seconds -> The number pad is flashed three times	11
Internal Security Mode On		Press and hold the [LOCK] button for 3 seconds while the door is locked	11
Internal Security Mode Off	Off	Turn the Thumb-Turn or press the [LOCK] button	11
Volume [Silent]	High	[R](3S) -> [1] -> [R](b)	12
Volume [Low]		[R](3S) -> [2] -> [R](b)	12
Volume [High]		[R](3S) -> [3] -> [R](b)	12
Registration Z-wave	Off	[R](6S) -> [147] -> [R](b)	14
Delete Z-wave		[R](6S) -> [369] -> [R](b)	14
Soft Reset	Factory Mode	[R](9S) -> [1478963] -> [R](b)	16
Factory Reset		[R](9S) -> [1236547] -> [R](b)	16

Documents / Resources



[COMMAX CDL-107U Smart Deadbolt Bluetooth Door Lock Touchscreen Keypad](#) [pdf] User Manual

CDL-107U Smart Deadbolt Bluetooth Door Lock Touchscreen Keypad, CDL-107U, Smart Deadbolt Bluetooth Door Lock Touchscreen Keypad, Deadbolt Bluetooth Door Lock Touchscreen Keypad, Bluetooth Door Lock Touchscreen Keypad, Door Lock Touchscreen Keypad, Lock Touchscreen Keypad, Touchscreen Keypad, Keypad

References

- keywe.thekeywe.com/index_kor.php
- [Manual-Hub.com - Free PDF manuals!](#)
- [User Manual](#)

[Manuals+.](#) [Privacy Policy](#)

This website is an independent publication and is neither affiliated with nor endorsed by any of the trademark owners. The "Bluetooth®" word mark and logos are registered trademarks owned by Bluetooth SIG, Inc. The "Wi-Fi®" word mark and logos are registered trademarks owned by the Wi-Fi Alliance. Any use of these marks on this website does not imply any affiliation with or endorsement.