



# ComMarker M7-mopa Laser Marking Machine User Manual

[Home](#) » [ComMarker](#) » ComMarker M7-mopa Laser Marking Machine User Manual 

## Contents

- [1 ComMarker M7-mopa Laser Marking Machine](#)
- [2 Product Usage Instructions](#)
- [3 Fire Safety](#)
- [4 Material Safety](#)
- [5 Use Safety](#)
- [6 Assembly](#)
- [7 Operation Instructions](#)
- [8 Open the software](#)
- [9 Parameters](#)
- [10 Accessories](#)
- [11 FAQ](#)
- [12 Documents / Resources](#)
  - [12.1 References](#)
- [13 Related Posts](#)

# ComMarker

**ComMarker M7-mopa Laser Marking Machine**



## Specifications

- Voltage: 100V – 240V
- Laser Type: M7-mopa
- Working Area: 11cm x 11cm / 15cm x 15cm / 20cm x 20cm
- Wavelength: 1064nm
- Marking Speed: 0-10,000mm/s
- Accuracy: 0.01mm
- Graphic Format Supported: BMP, DXF, JPG, TIF, AI, PNG, etc
- System Supported: Ezcad2 (Compatible with Windows XP/Vista/7/8/10), LightBurn (license purchase needed, compatible with Mac, Windows)
- Cooling Type: Air Cooling
- Output Power Options: 20w, 30w, 60w, 80w, 100w

## Product Usage Instructions

### Assembly

1. Place the parts on the table.
2. Put the lifting pole upright and fasten it with screws.
3. Put the laser head on the supporting shelf of the pole and fix it with screws.
4. Plug in the power cable and connect the data cable.
5. Unlock the handle with the screw.
6. If needed, fix the positioner and connect the pedal with the machine (optional).

### Operation Instructions

1. **Driver Installation:**

- Right-click on 'This PC' and click 'Manage'.
- In 'Device Manager', find 'USBLMCV2' under 'Other devices'.
- Right-click on 'USBLMCV2' and select 'Update driver'.
- Browse to the USB drive to find and install the driver.
- Once installed successfully, 'BJJCZ Device' will appear in 'Device Manager'.

**Note:** If installation fails, refer to FAQ 1.

## 2. **Open the Software:**

Open the EZCAD for ComMarker folder from the USB drive based on your lens marking area. Open EZCAD2 software to enter text, pictures, or vector diagrams for testing.

## 3. **Import Correction File**

Select 'Parameter (F3)', enable 'Use Correct File', choose the .cor file from the USB flash drive or computer disk, and apply it.

## 4. **Adjust Focus**

Use the hand crank handle to lift the laser head and align the three red light points to find the best focal length.

**Note:** Red light correction may be needed due to transportation; refer to FAQ 2 for adjustments.

## 5. **Marking Test:**

Place test material on the machine, use the red light function to identify the marking area, select default parameters, and start marking.

## **Frequently Asked Questions (FAQ)**

### **FAQ 1: Driver Installation Issue**

#### **If the driver installation is unsuccessful, what should I do?**

Ensure you have copied and pasted the files from the U disk to a computer disk before installation.

### **FAQ 2: Red Light Focus Adjustment**

#### **If the red light focus point is not at its best focal length, how can I adjust it?**

Refer to the troubleshooting section at the back of the manual for guidance on red light correction.

## **Security Statement**

Before using the laser engraving machine, please read this safety guide carefully. It mentions situations that require special attention and includes warnings of unsafe practices that can cause damage to your property or even endanger your personal safety.

## **Laser Safety**

- The lasers are very powerful that can cause eye injuries. It is recommended to wear laser goggles when using the machine. And we recommend OD4 goggle or better. This laser source carries a Class 4 laser rating, which emits invisible 1064nm wavelength laser radiation with average output power over 20W. Both direct beam and reflect beam will cause permanent damage to the eyes, skin, and might cause fire
- Avoid exposing your skin to Type 4 laser beams, especially at close range
- Teens must be supervised by parents while using the machine.
- Do not touch the laser beam while it is switched on.

## Fire Safety

- The laser beam could burn substrate when marking, which will generate extremely high temperatures and a lot of heat.
- Some materials can catch fire during the engraving process, then creating gas and smoke.
- Do not leave the machine alone during the engraving process.
- Please do remember to clean the laser machine of debris, scraps and flammable materials after use.
- When using a laser marking machine, fumes, vapors, particles are generated from the material (plastics and other flammable materials), they are potentially toxic . These fumes or airborne contaminants can be hazardous to health.

## Material Safety

- Do not engrave materials with unknown properties.
- Materials Recommended: Metal, Stainless Steel, aluminum,copper,silver, plastic,etc.

## Use Safety

- Ensure that the machine has been securely fixed to prevent fires caused by accidental shifting or dropping from the workbench during work.
- It is forbidden to point the laser to people, animals or any combustible object, whether it is in working condition or not.
- Make sure the auxiliary holder is on the marking surface before pressing “mark” button, prevent the laser beam from hitting people or other objects.

## Assembly

1. Place the parts on the table
2. Put the lifting pole upright Fasten the pole with the screws



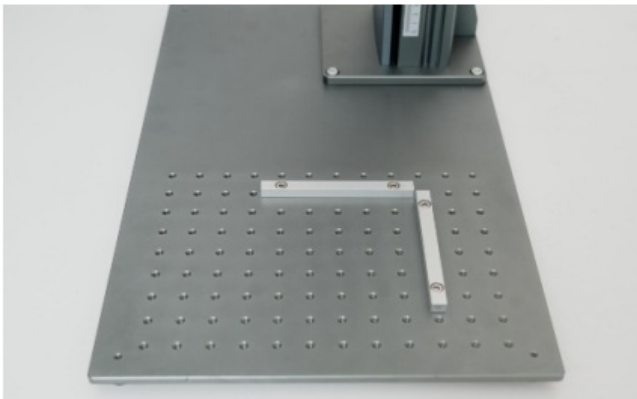
3. Put the laser head on the supporting shelf of the pole and fasten the screws to fix the laser head
4. Plug in the power cable



5. Connect the data cable
6. Unlock the handle with the screw



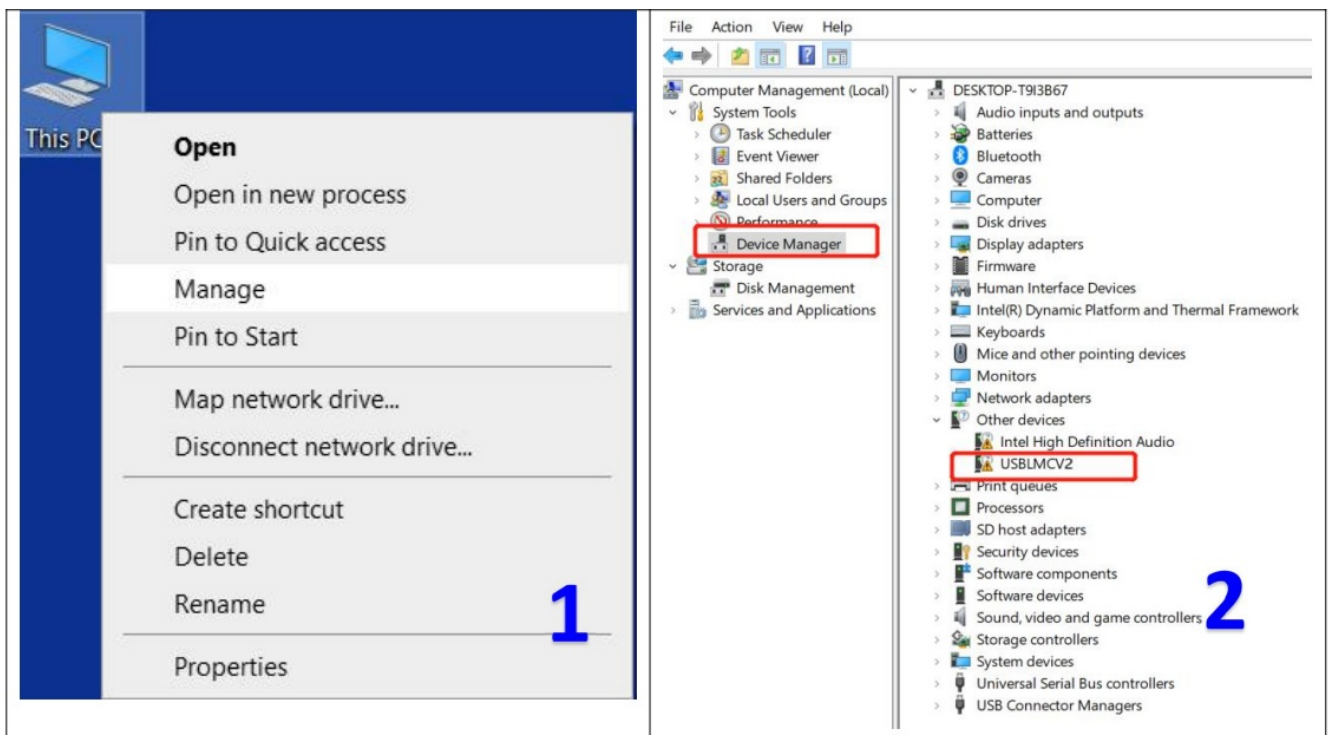
7. Fix the positioner if needed. it is optional because it won't affect the marking effect
8. Connect the pedal with the machine if needed. It is also optional.



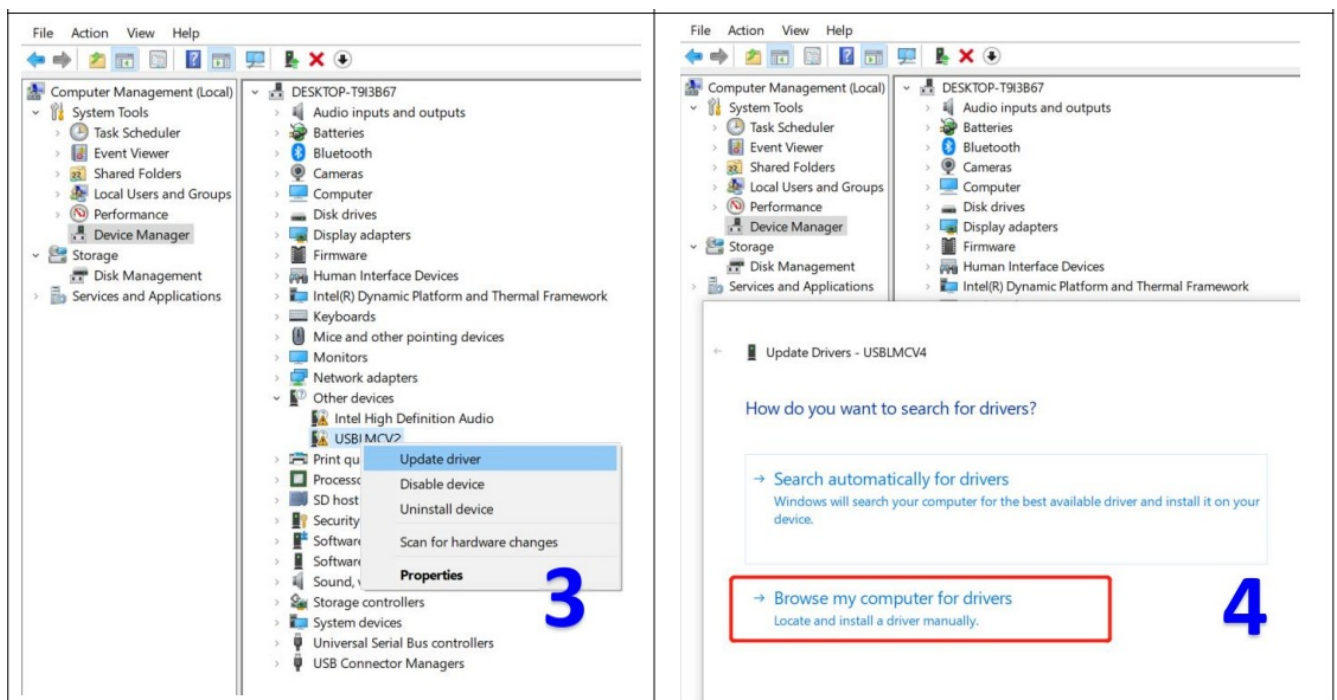
## Operation Instructions

### Install the driver

1. Right-click "this PC", click "Manage"
2. Click "Device Manager", find "USBLMCV2" in Other devices

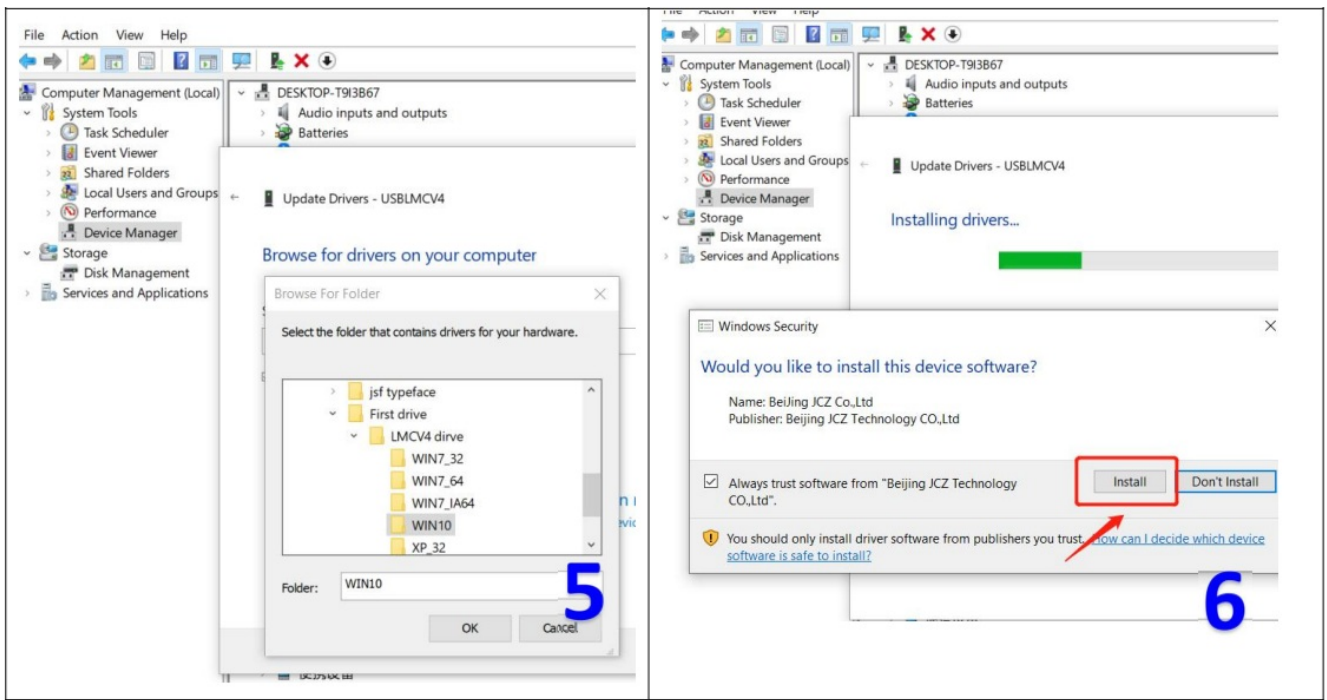


3. Right-click "USB LMCV2" and "Update driver"
4. Select "Browse My Computer for Drivers"

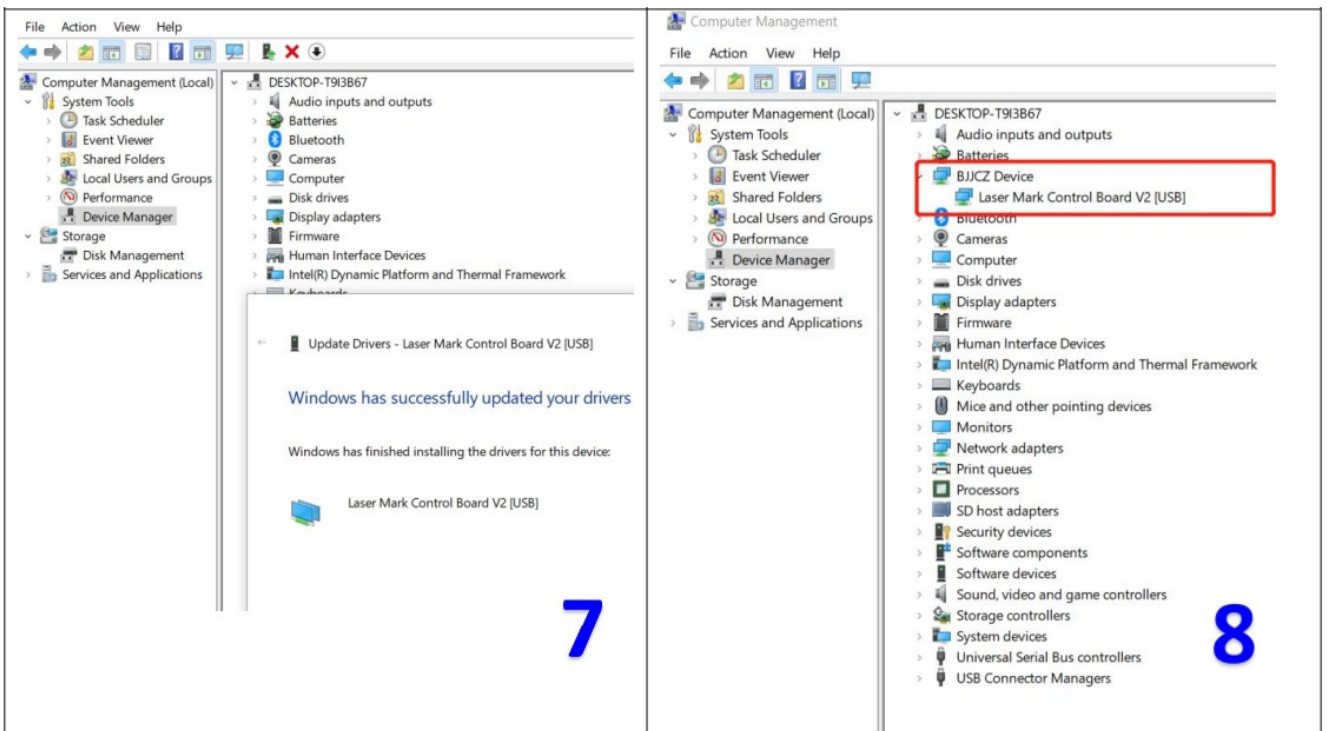


5. Find the corresponding file in the USB drive, click OK
6. Click "Install"





7. Click "finish" if it is successful
8. it will display "BJJCZ Device" in Device Manager

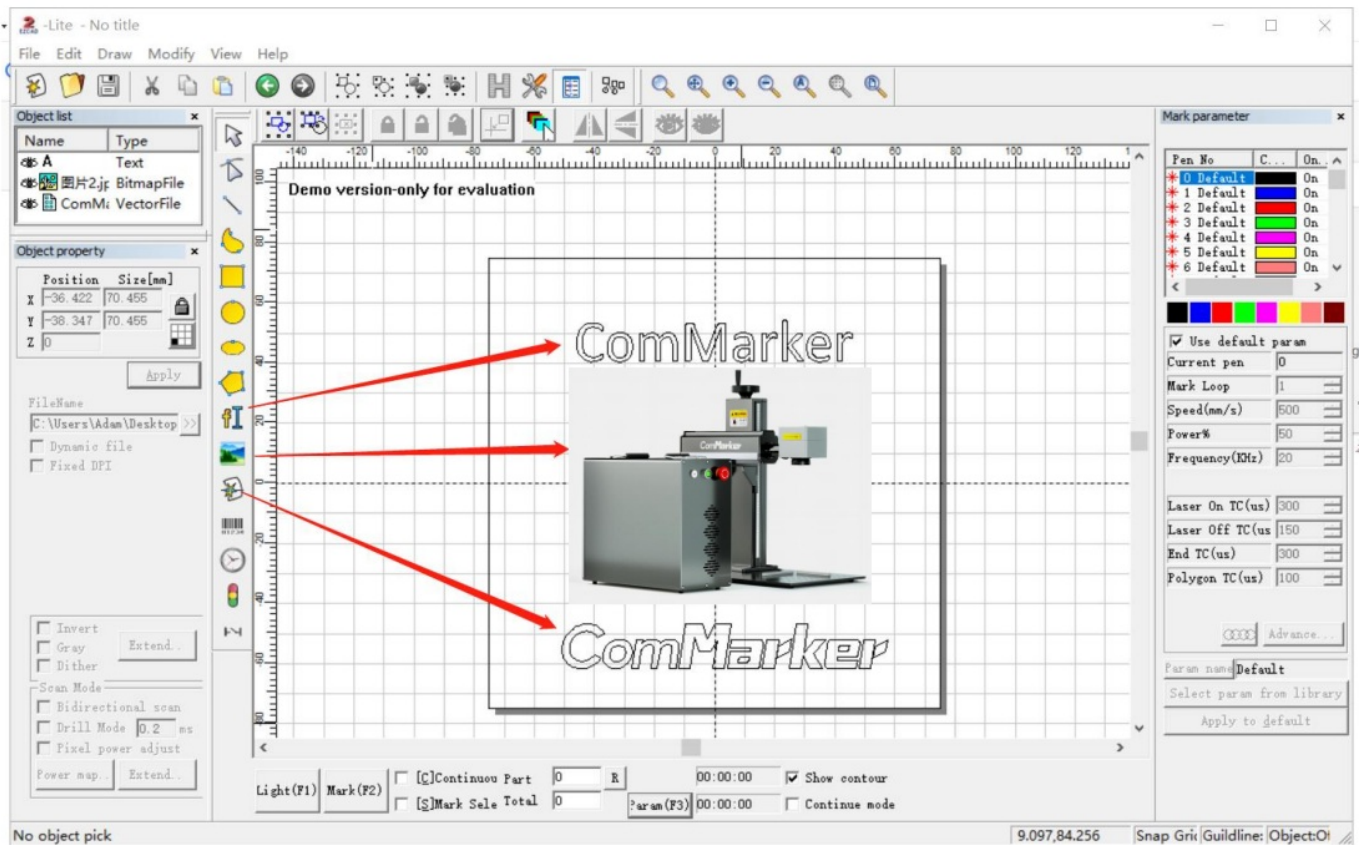


**Noted:** \*It is recommended to copy and paste the files of the U disk to the computer desktop or other computer disks.

\*If the driver installation is unsuccessful, please refer to FAQ 1

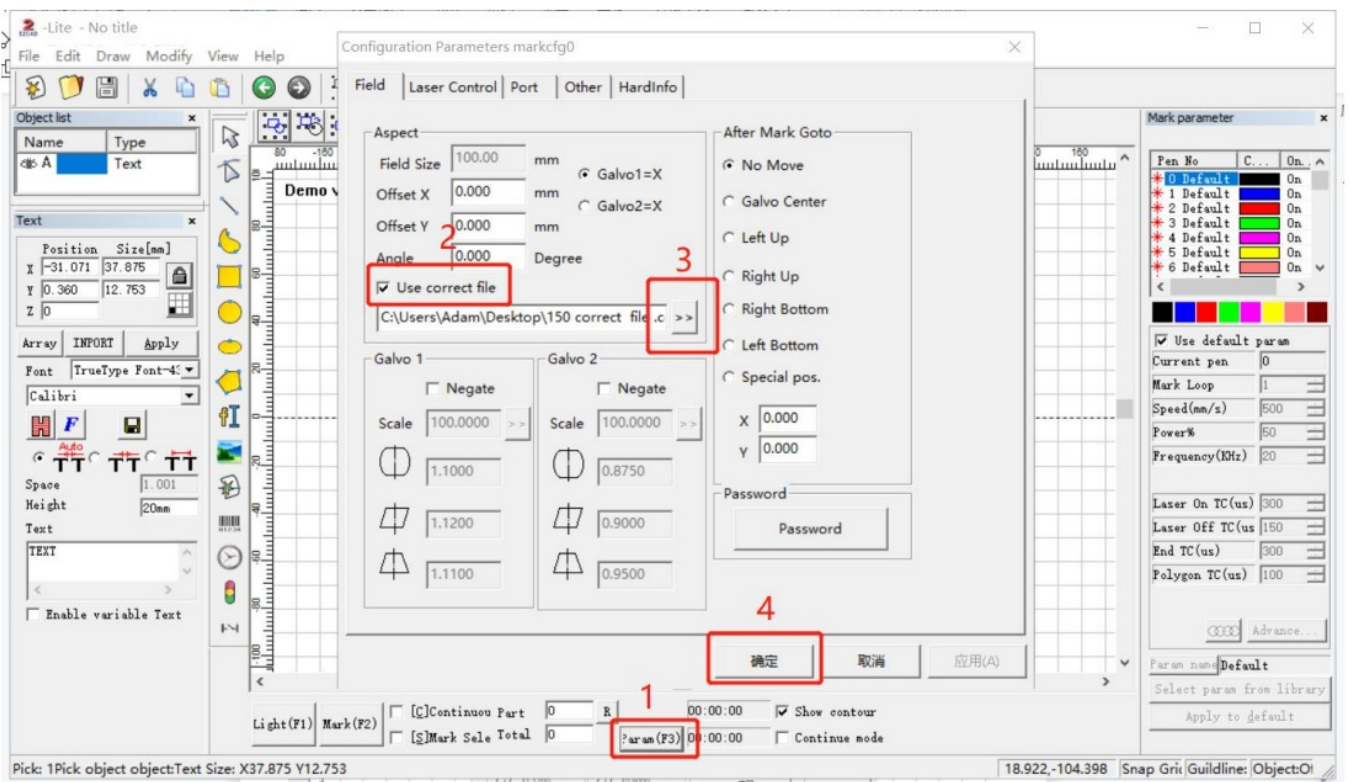
## Open the software

Open the USB folder, open the "EZCAD for ComMarker" folder, and select the folder according to the marking area of your lens(11cm, 15cm or 20cm). Open the software "EZCAD2". You can enter "text", "picture" or "vector diagram" as shown in the figure below. It is recommended to select the text to test first



### Import the correction file

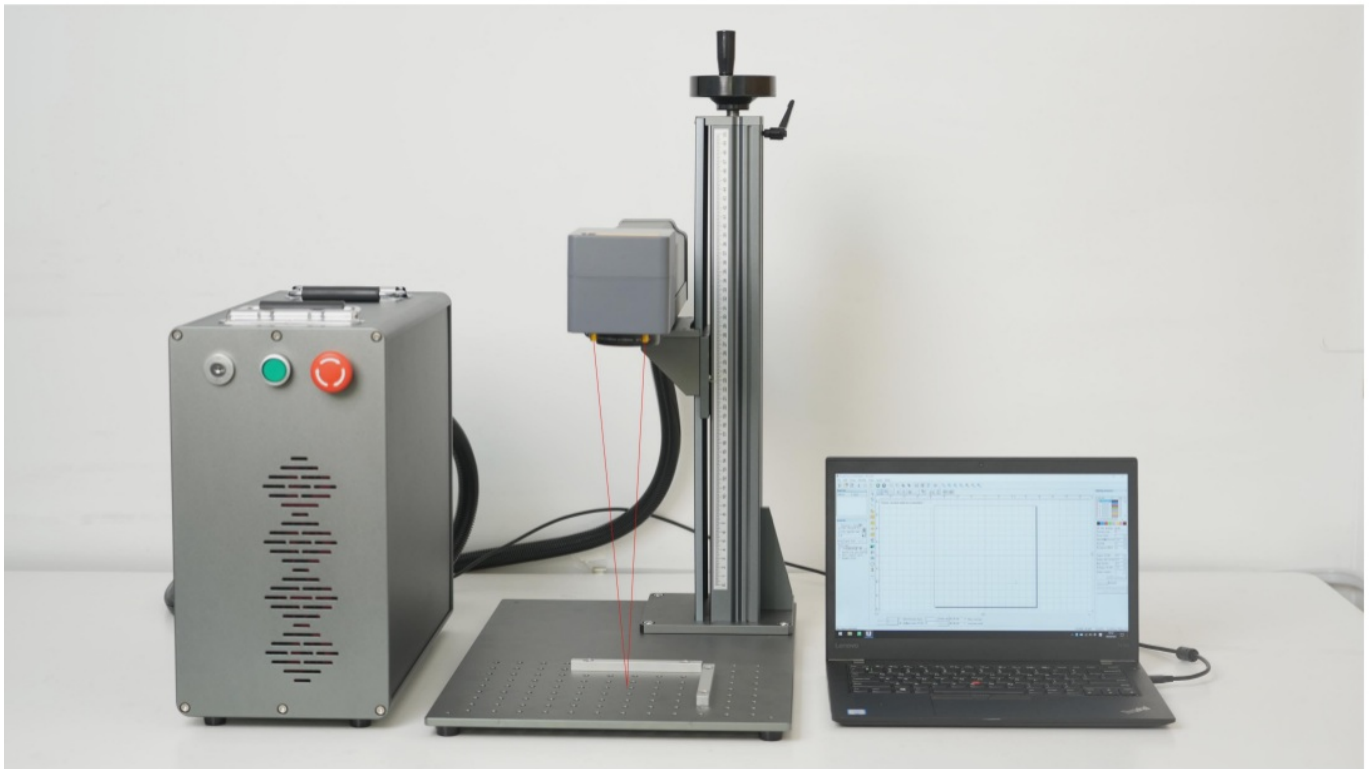
Select "Parameter (F3)", tick "Use Correct File", click , select the file ending in .cor in the USB flash drive (or have been copied to the computer disk), and click "OK".



### Adjust the focus

Adjust the hand crank handle of the column, lift the laser head, and make the three red light points gradually approach, until the three points become one point, which is the best focal length.

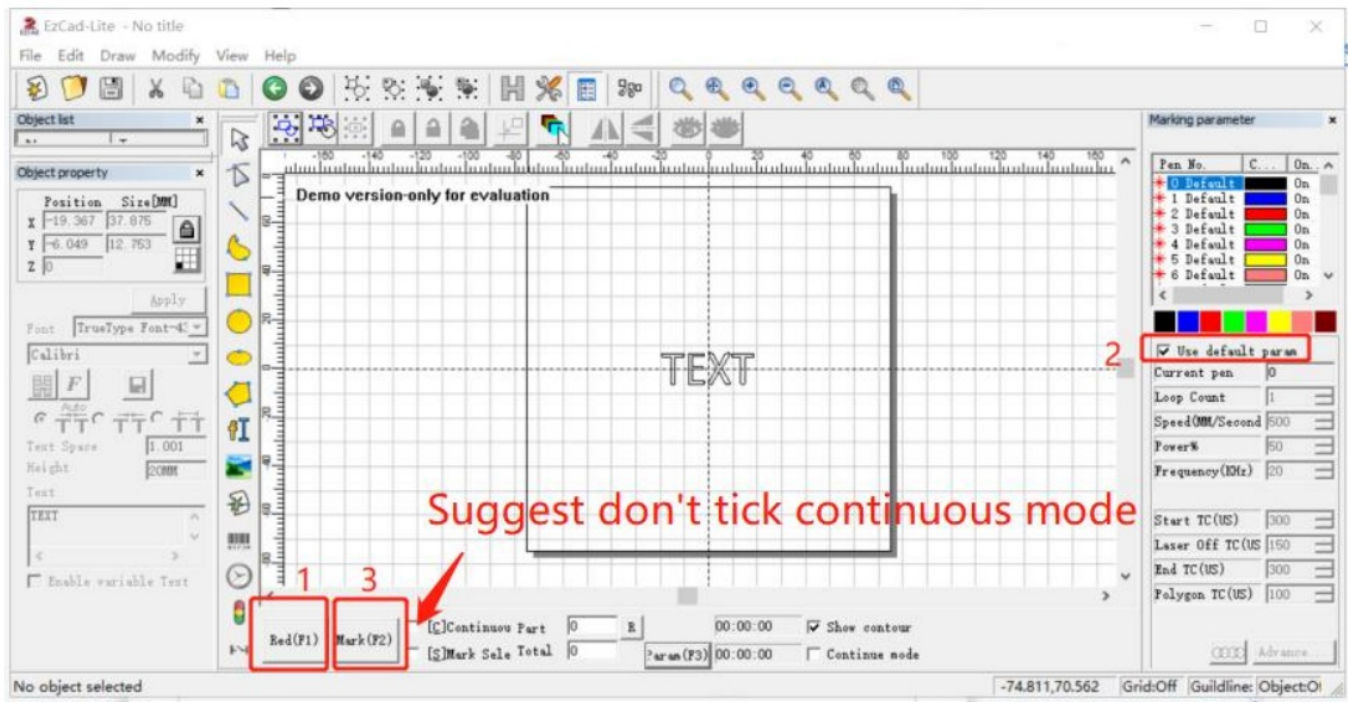




**Note:** Before the machine is out of the factory, we have done red light correction. At the position where the three red light spots are focused, the laser emits the strongest light. However, due to transportation reasons, the focus point of the red lights you received may shift, and the focus point is not the best focal length. Please refer to FAQ 2 at the back of this manual for debugging.

### Marking test

Place the test engraving material on the machine. Click “Red Light (F1)”, the area shown by the red light is the marking area. Tick “Default Parameters”. Click “Mark (F2)” to start marking.



### Parameters

Voltage	100V – 240V				
Laser Type:	M7-mopa				
Working Area	11cm x 11cm/15cm x 15cm/20cm x 20cm				
Wavelength	1064nm				
Marking Speed:	0- 10,000mm/s				
Accuracy	0.01mm				
Graphic Format Supported:	BMP, DXF, JPG, TIF, AI, PNG, JPG, etc				
System Supported	Ezcad2 (Compatible with Windows xp/vista 17/8/ 10 ) LightBurn ( licence purchase needed ) compatible with Mac , windows				
Cooling Type	Air Cooling				
Output Power	20w	30w	60w	80w	100w

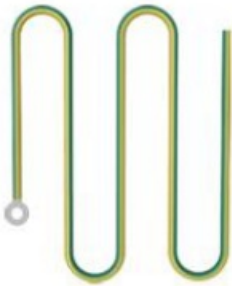
## Accessories



Power Adaptor



Data Cable



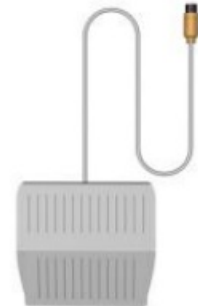
Ground Wire



USB Drive



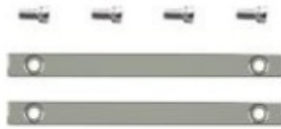
Ruler



Foot switch



Goggles



Placing Helper



Allen Wrench

## FAQ

### Q1: The driver installation was unsuccessful?

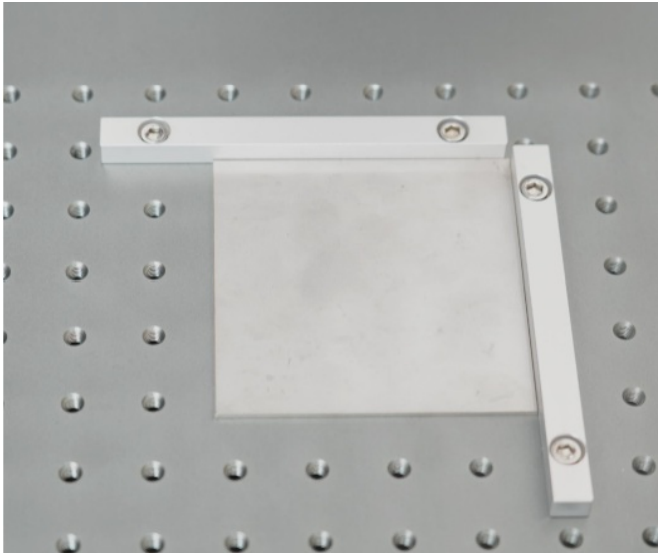
- Please make sure to use the copyrighted window system, if not, please replace it with another computer.
- Please try to replace a data cable.
- It may be a computer port problem or a computer board connection problem, please try with another computer.

### Q2 The overlapping position of the double red light is not the best focal length.

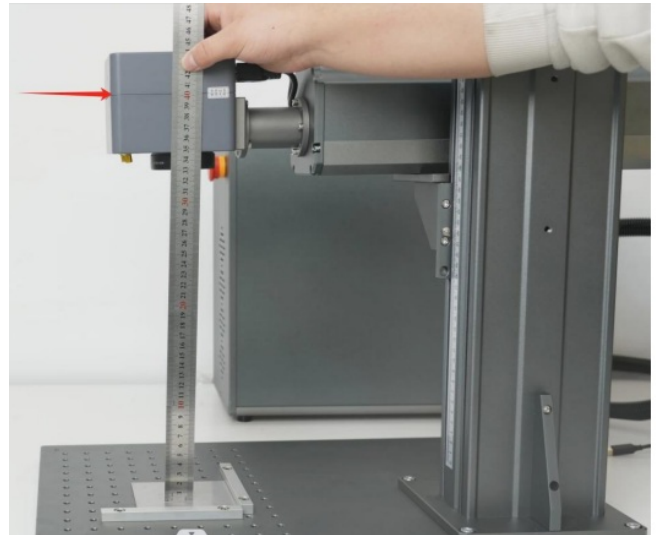
The measuring focal length of this machine is \_\_\_\_\_ mm, and the measuring distance is the length from the center line of the galvanometer to the surface of the engraving material. This parameter is measured manually, and each device has different focal lengths due to changes in laser sources and field lenses.

**Please operate as the following steps:**

1.Place the stainless steel test plate on the machine table



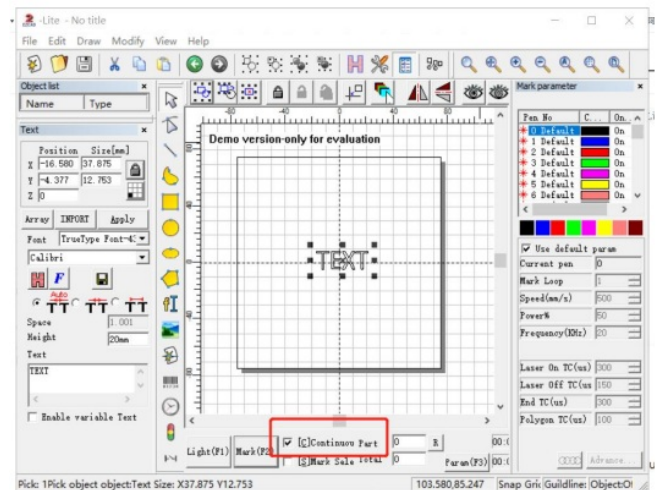
2.lift up the laser head close to the best focus point



3.Then turn on the machine and the auxiliary red light, connect the computer with the machine

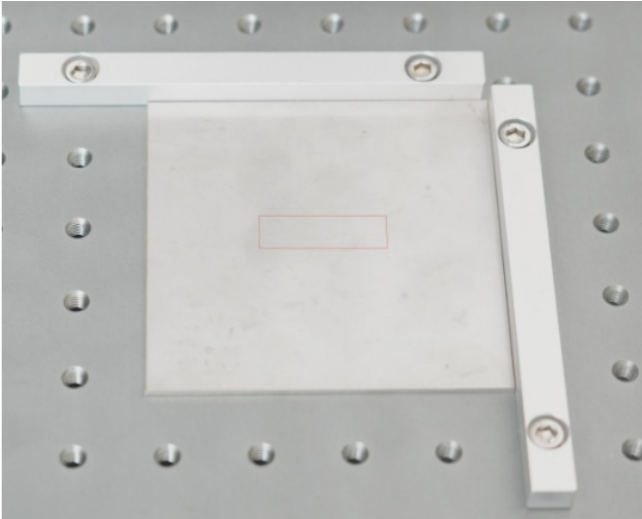


4.Import the “TEXT” for testing , select the default parameters, and tick the “continuous part” button.



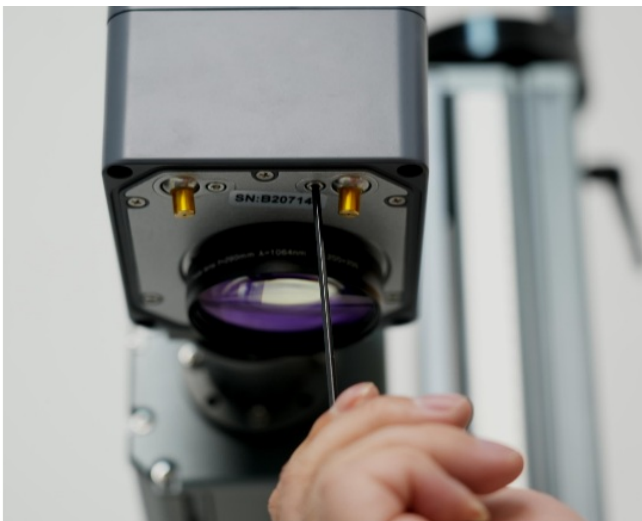
5.Press “light” to ensure it’ll mark on the test material. Click “mark”, and the laser is in continuous marking state

6.At the same time, manually lift the laser head and observe the obvious change of intensity of the laser beam. Stop when the laser emits the strongest laser



7. At this time, loosen the screws for the two beams of the auxiliary red light

8. Manually adjust the relative position of the red light dots to make them overlap. And tighten the screws



**Q3: The USB flash drive is damaged and cannot be opened**

- Please visit Commarker's official website to download the B3 driver and software.
- Contact after-sales staff or email us

**Q4: The red light preview functions, but there is no mark or the marks are very light**

- Please adjust the focal length, please refer to question 2 for debugging methods
- Contact after sales staff or email us

**Q5: Can not find dongle, software will work at demo state**

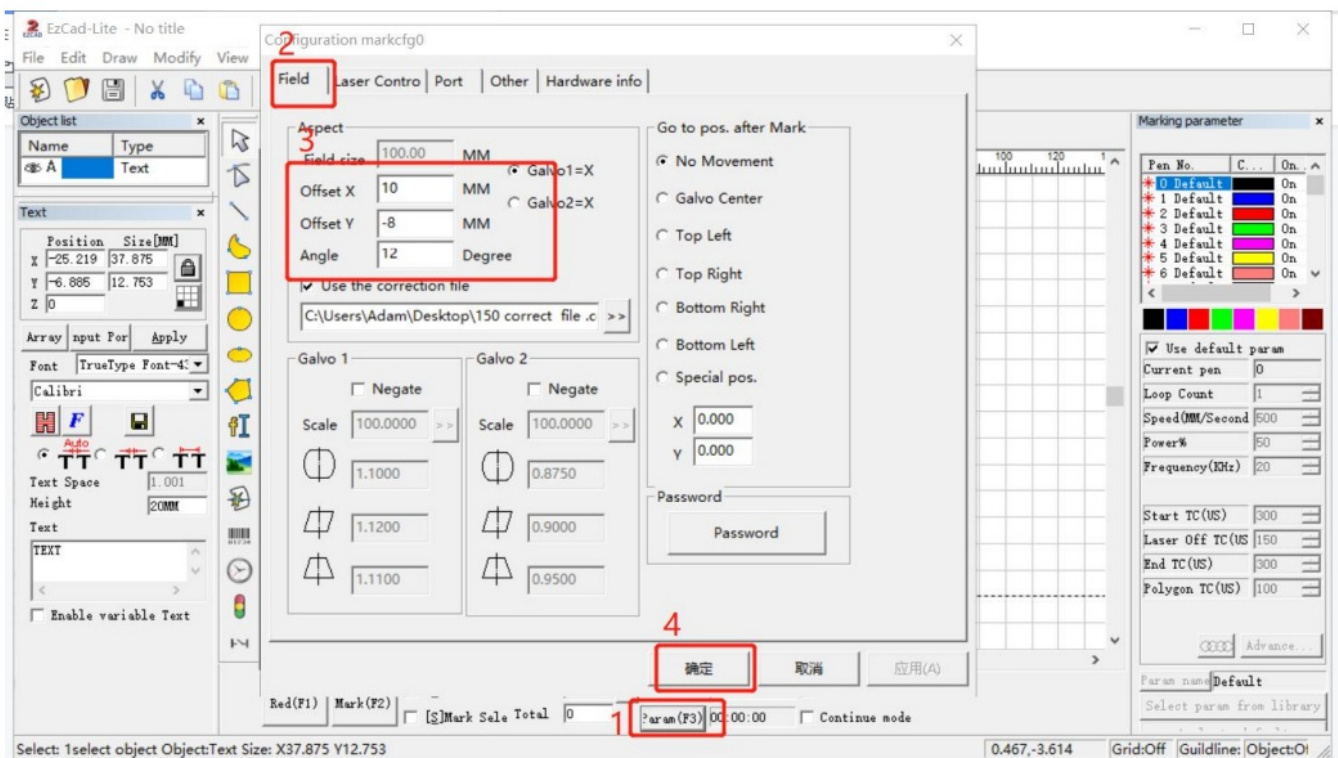


- The machine is not powered on, or the machine is not connected to the computer. Please turn it on and make sure the data cable is connected to the computer
- Driver is not installed successfully, try to uninstall the previous driver and reinstall “USBLMCV2”

**Q6. The size of preview and the mark is inconsistent with the software display, or preview and the mark are not horizontal or vertical but with angles.**

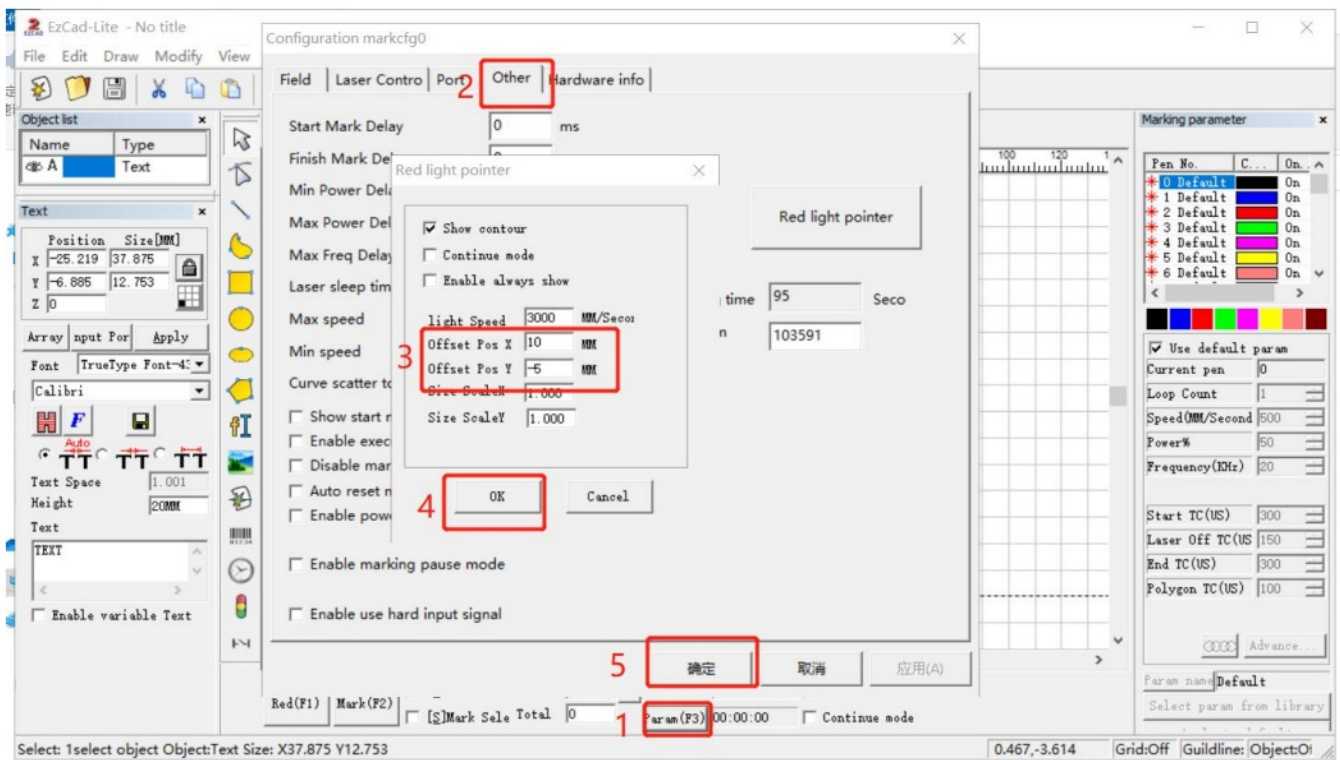
- Import the calibration file, please refer to step 3 of the operating instructions
- If the problem not solved, select “Parameter (F3)”, select “Field”. Input numbers in “Offset X” ,”Offset Y” or “Angle” according to the actual deviation number based on the measurement with a ruler.

**\*If it still doesn’t work, please contact after-sales staff or email us**



**Q7: The red light preview is inconsistent with the actual engraving position**

- Import the calibration file, please refer to step 3 of the operating instructions
- If the problem not solved, select “Parameter (F3)”, select “Other” and “Red light pointer”. Input numbers in “Offset X” and “Offset Y” according to the actual deviation number based on the measurement with a ruler. The number can be positive or negative, the red light will change in different directions at the positive and negative values.

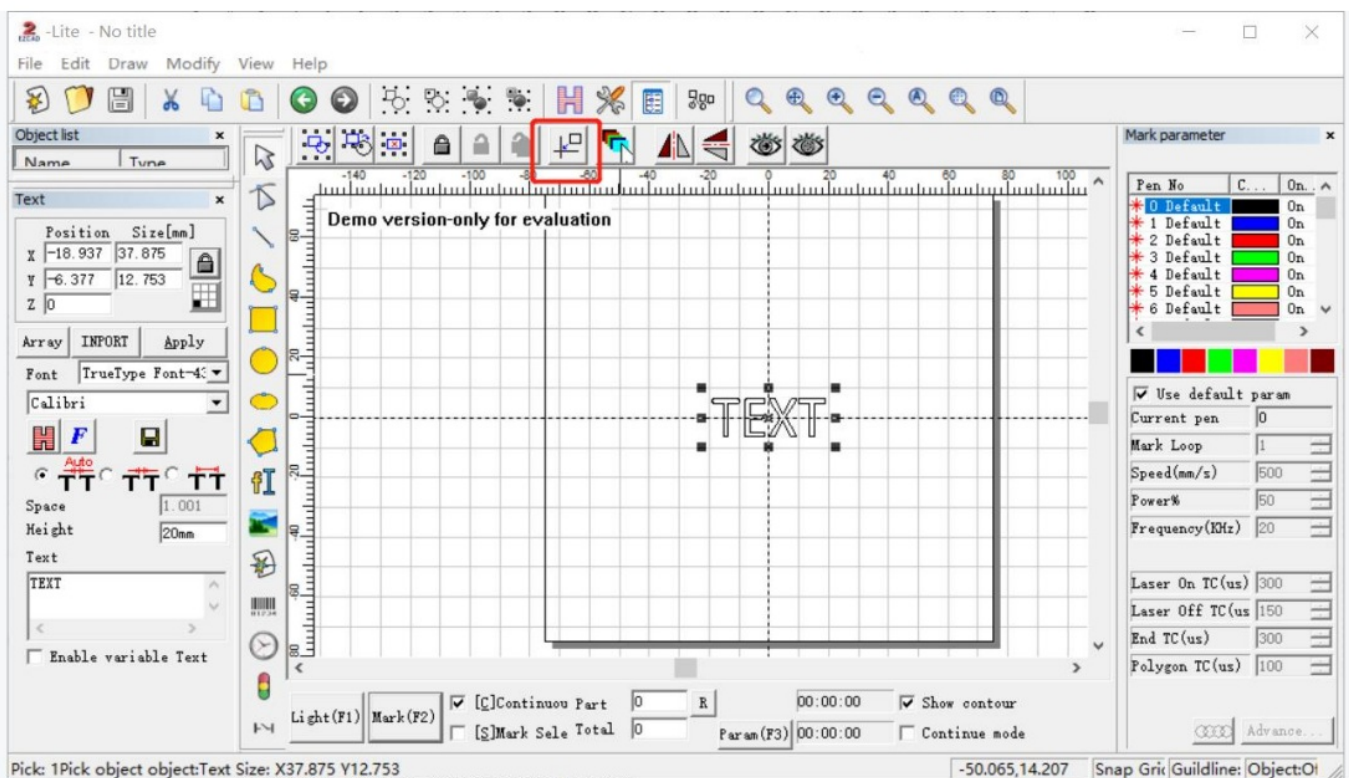


#### Q8: The preview and the shape of the mark is deformed

- Import the calibration file, please refer to step 3 of the operating instructions
- If it still doesn't work, please contact after-sales staff or email us

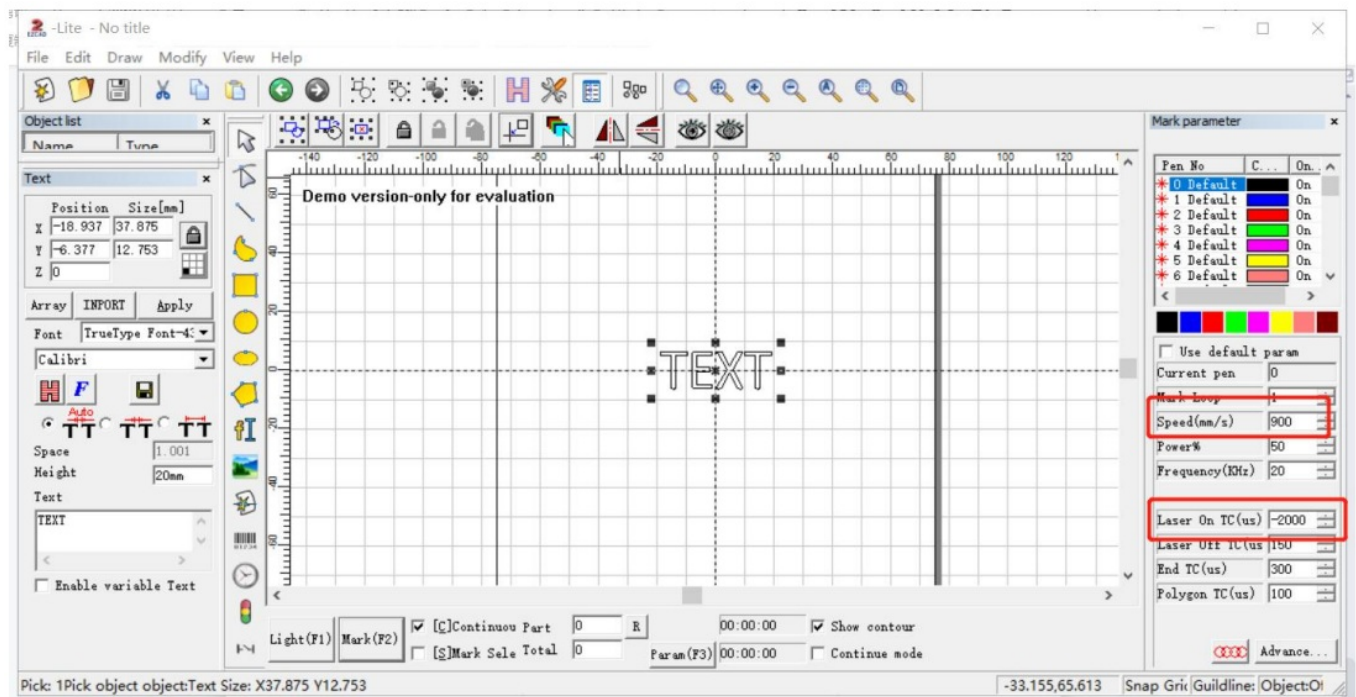
#### Q10: Nothing displays on canvas board when importing text or picture

\*Please click the practical center button, the picture and text are in the center of the canvas



#### Q15: Marking laser stop emitting periodically, which makes the marks missing partially

\*Reduce the “speed” to “less 1000”, and adjust the “Laser on TC(us)” to “-2000” or less



## Note

This manual will be continuously updated. Please download the e-version manual If you need an updated manual


## Customer Service

For more video and supportive materials, please visit our official website at: [www.commarker.com](http://www.commarker.com)

For Laser Engraver technical support and service please email: [support@commarker.com](mailto:support@commarker.com)

**Manufacturer:** Hefei ComMarker Technology Co., LTD

## Documents / Resources

	<p><a href="#">ComMarker M7-mopa Laser Marking Machine [pdf] User Manual</a> M7-mopa Laser Marking Machine, M7-mopa, Laser Marking Machine, Marking Machine, Machine</p>
---	--

## References

- [C CO2, UV & Fiber Laser Engraver | ComMarker Laser](#)
- [User Manual](#)

[Manuals+](#), [Privacy Policy](#)

This website is an independent publication and is neither affiliated with nor endorsed by any of the trademark owners. The "Bluetooth®" word mark and logos are registered trademarks owned by Bluetooth SIG, Inc. The "Wi-Fi®" word mark and logos are registered trademarks owned by the Wi-Fi Alliance. Any use of these marks on this website does not imply any affiliation with or endorsement.