



COMMAND ACCESS TECHNOLOGIES PD10-M-RIM PTS Instruction Manual

[Home](#) » [COMMAND ACCESS TECHNOLOGIES](#) » [COMMAND ACCESS TECHNOLOGIES PD10-M-RIM PTS](#)
Instruction Manual 

Contents

- [1 COMMAND ACCESS TECHNOLOGIES PD10-M-RIM PTS](#)
- [2 INSERT Instructions](#)
- [3 KIT INCLUDES](#)
- [4 TOOLS REQUIRED](#)
- [5 Technical Information](#)
- [6 Setting PUSH TO SET \(PTS\)](#)
- [7 Troubleshooting & Diagnostics](#)
- [8 Electrified Exit Device](#)
 - [8.1 INSTALLATION EXAMPLE](#)
- [9 RIM PANIC](#)
 - [9.1 Optional STEP – Installing Cylinder](#)
- [10 PD10 Parts Breakdown](#)
- [11 Documents / Resources](#)
- [12 Related Posts](#)

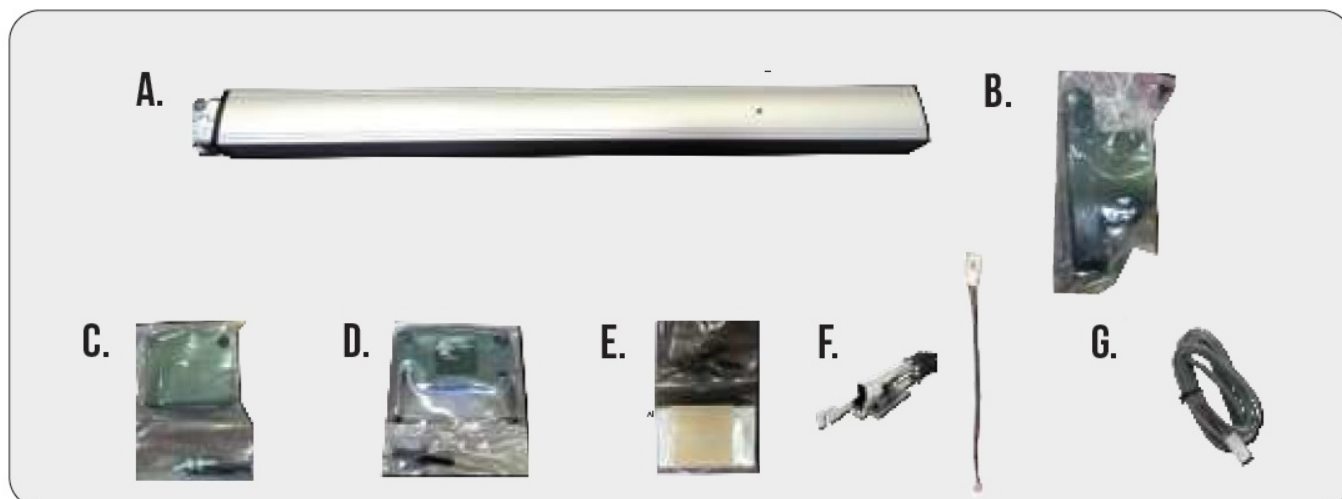


COMMAND ACCESS TECHNOLOGIES PD10-M-RIM PTS



INSERT Instructions

The PD10-M-RIM is a storefront grade 1 exit device equipped with motor drive latch retraction. Retrofits Doromatic 1790 & First Choice 3790.



KIT INCLUDES

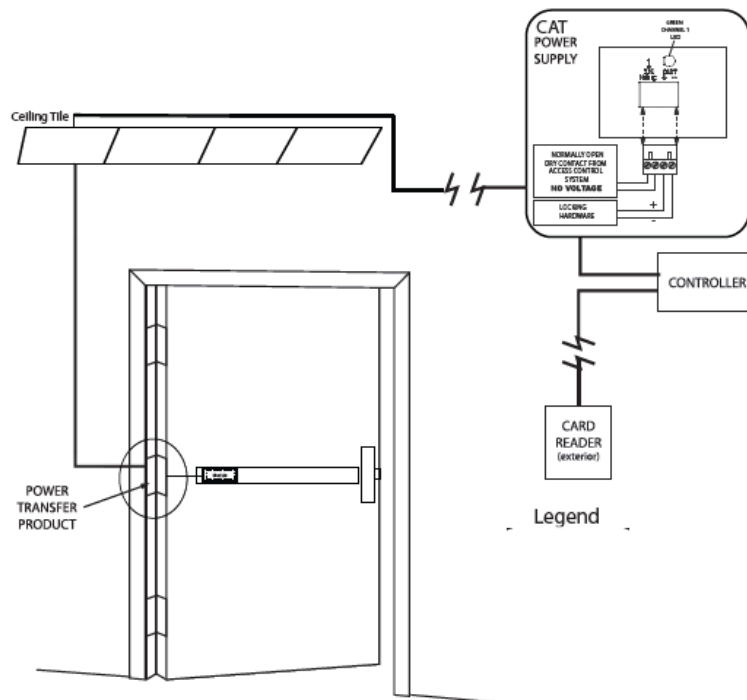
- A. Head Cover pack
- B. RIM Exit Device
- C. Hinge Stile End Cap pack
- D. Lock Stile End Cap pack
- E. Rim Strike pack
- F. MOTOR KIT – Installed in exit device
- G. 1- 50944 Molex Pigtail
- H. 1- 50030 8' Lead w/ VD Connector

TOOLS REQUIRED

- Cordless Drill
- Needle nose Pliers

- Measuring Tape
- 1/2 Drill bit

Technical Information



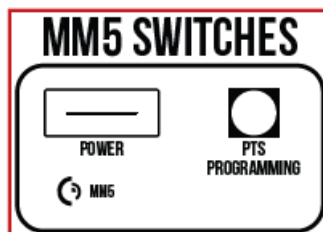
PTS VIDEO



Setting PUSH TO SET (PTS)

****Important Info****

Make sure to set PTS before finishing installation



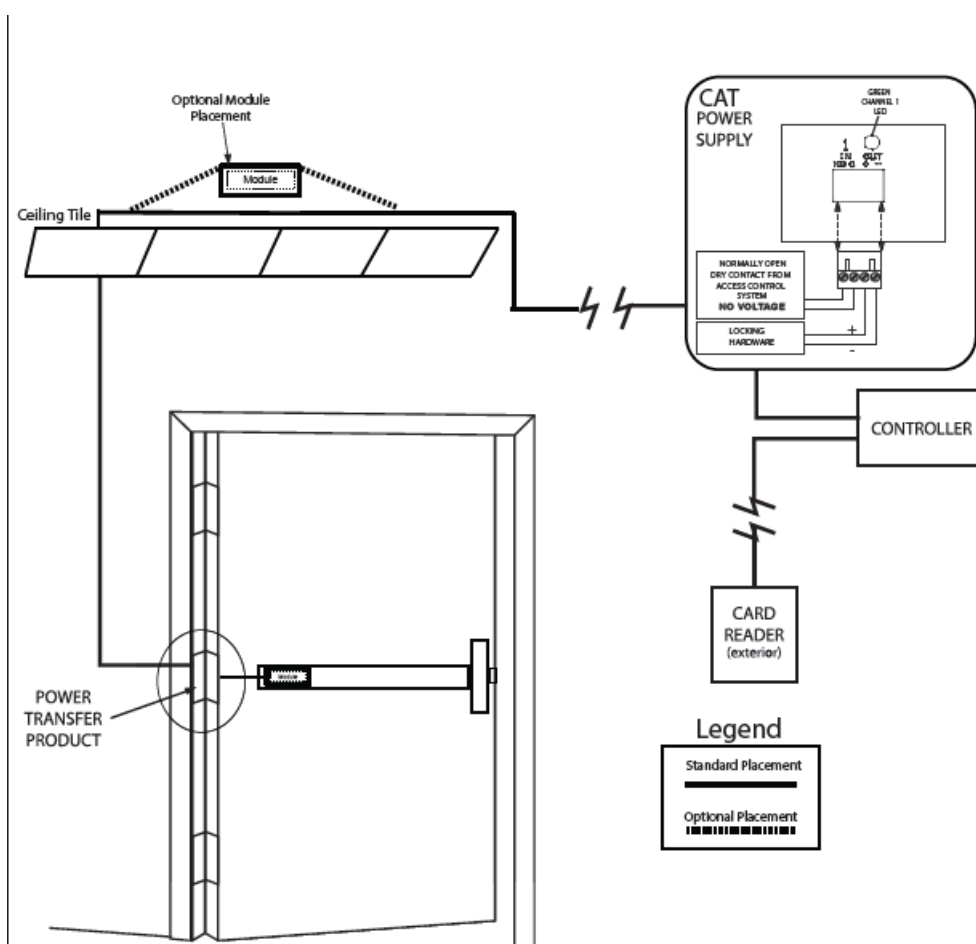
- Step 1 – To enter PTS mode: Depress MM5 button & apply power. The device will emit 1 SHORT beep. The device is now in PTS mode.
- Step 2 – While depressing the push pad, apply power. (i.e. presenting the credential to the reader).
- Step 3 – Continue to keep pad depressed, the device will emit 1 LONG Beep. After the beep has stopped, release the pad and now the adjustment is complete. test the new location, If not to your liking repeat the 3 steps.

Troubleshooting & Diagnostics

Beeps	Explanation	Solution
2 Beeps	Over Voltage	> 30V unit will shut down. Check voltage & adjust to 24 V.
3 Beeps	Under Voltage	< 20V unit will shut down. Check voltage & adjust to 24 V.
4 Beeps	Failed Sensor	Verify all 3 sensor wires are installed correctly. Replace sensor if problem persists by contacting office.
5 Beeps	Retraction or dogging failure	After 1st fail: 5 beeps then immediately attempts to retract again. After 2nd fail: 5 beeps with pause in-between for 30 seconds then device attempts to retract again. After 3rd fail: 5 beeps every 7 minutes, device will not attempt to retract. To Reset: Depress bar for 5 seconds at any time.

Electrified Exit Device

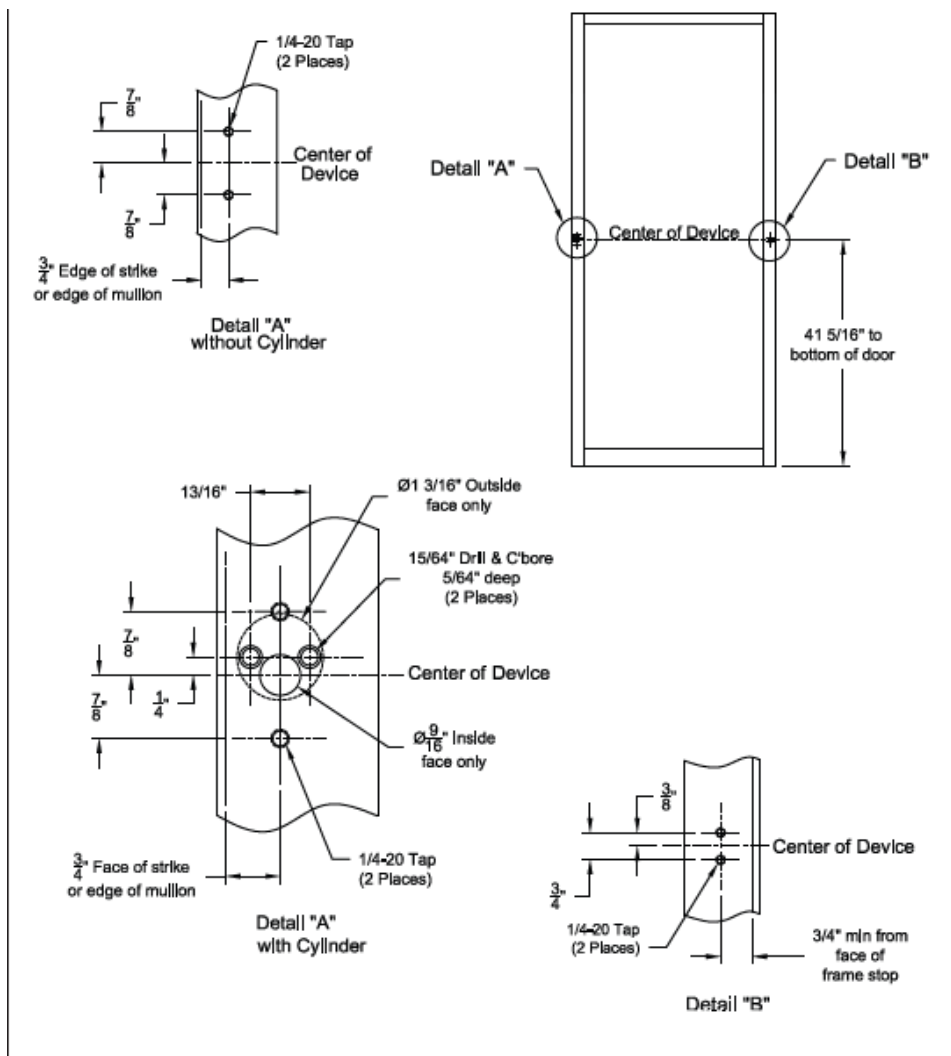
INSTALLATION EXAMPLE



RIM PANIC

Installation Template

All prep is shown on interior side of the door, except where noted. Right hand door shown. (LHR)

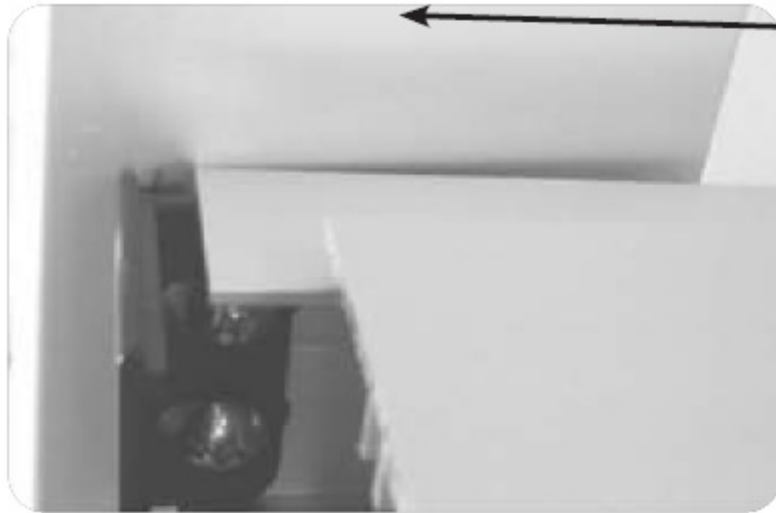


STEP 1 – Mount Exit Device

- Install the stile mounting bracket with 2 ea. 1/4-20 x 1/2 pan head screws. Leave space to capture the base of the device. (See next slide)



- Slide the end of baserail underneath the mounting bracket.



Optional STEP – Installing Cylinder

- A. Install trim cylinder tail piece so that it is slightly below the face after mounting. Install key cylinder using mounting screws supplied with cylinder. (Screws may need to be shortened.)



- For Night Latch, leave set screw in place.
- Hold Back function is desired, remove the set screw to allow additional rotation of cylinder tailpiece.



STEP 1B – Continued

- Attach head of device to stile with 2 ea. 1/4-20 x 3/4 " screws. Tighten screws on the head and base of the device.



STEP 2 – Drill Wire Chase

- Remove lock stile end cap.



- Slide push pad off of baserail.



- Drill the hole for our 2 pin power lead in-between the 2 mounting screws.



- Feed the 2 pin power lead into the hole and connect to our MM4 module. Also, make sure to clean out any debris left.



Note: Depending on where your power transfer is; next you would fish the other side of the power lead we connected to the MM4 and hook up to your incoming power. If you have a portable tester this would be a good time to test fire the motor.

- Replace push pad, making sure the activating brackets and pins slide through the 3rd channel.



- F. Reinstall the lock stile end cap.



STEP 3 – Install Head & End Cap

- A. Install head cover with 2 ea. 10-32 x 3/8 screws.



- Install hinge stile push pad cover with 2 ea. 8-32 x 1 1/2" screws. Now you set you latch retraction adjustment with our "PTS" technology.

See page #2



STEP 4 – Install Door Frame Stop

- Install the roller strike with 2ea. #10-32 x 1 " screws so the roller is flush with the frame stop. (Use strike shim for 5/16" stops.)



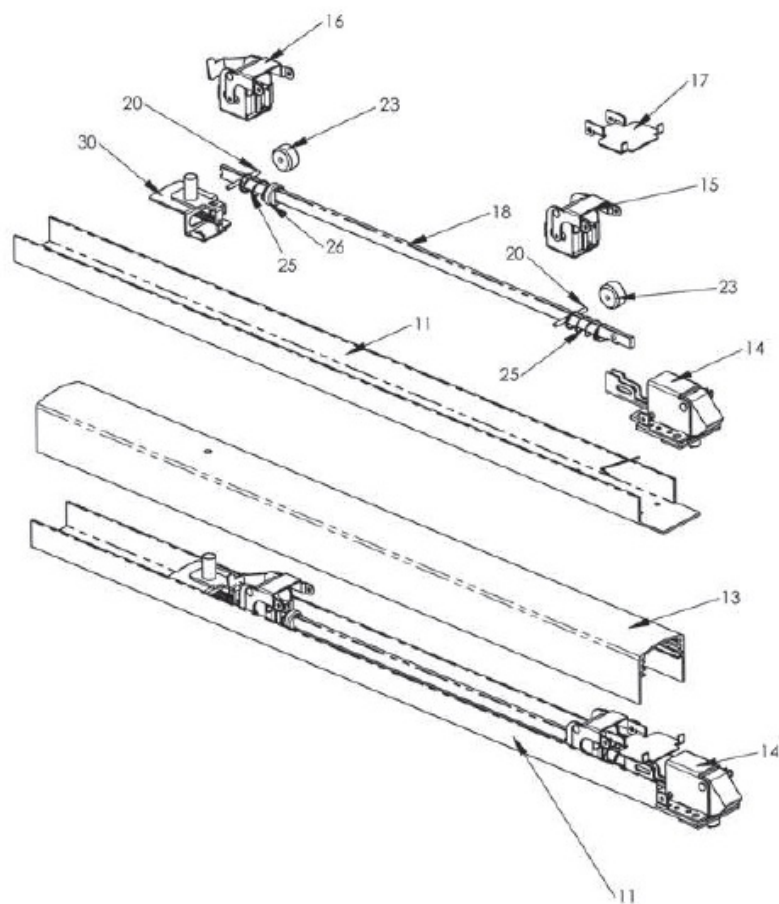
- Using the roller strike as a template, drill and tap rear mounting holes. Install remaining 10-32 x 1" mounting screws and tighten all screws.



STEP 5 – Install Wear Strip

- Cut wear strip to desired length.
- Clean surface of the frame before. apply wear strip in indicated area.
- Peel backer paper from wear strip.
- Apply wear strip flush to front of frame jamb in indicated area.


<i>Reference Number</i>	<i>Description</i>	<i>Part Number</i>	<i>Quantity Per Device</i>
1	Hinge Stile Push Bar End Cap	30	1
2	End Cap Screw	802	2
3	Channel End Cap	33	1
4	Hinge Stile Mounting Screws	801	2
5	Dogging Key	819	1
6	Center Cover	40A	1
7	Cover Screw	804	2
8	LS Mounting Screws	826	2
9	Cylinder Cam	9039	1
10	Retractor	35	1
11	Allen Wrench	825	1
12	Cam Spacer Plate	31	1
13	Spacer Plate Screws	M817	2
14	Strike Mounting Screw	836	4
15	Strike Shim	17001423	1
16	Strike Assy.	17001A05	1
17	UHMD Wear Strip	17001288	1



Reference Number	Description	Part Number	Quantity Per Device
S1	Hinge Stile Activating Bracket	71	1
S2	Lock Stile activationg Bracket	9034	1
S3	Push Bar Bracket	15	1
S4	Push Bar Axle Pin	16	2
S5	Roller Stop	17	2
S6	Spring	23	2
S9	Spring Cap	24	1
S10	Activating Connecting Rod	21	1
S11	Rim Latch Bracket Assy.	9032	1
S12	Dogging Kit	71	1

US CUSTOMER SUPPORT 1-888-622-2377 | WWW.COMMANDACCESS.COM | CA CUSTOMER SUPPORT 1-855-823-3002

Documents / Resources

 <p>PD10-M-RIM PTS</p> <p>INSERT INSTRUCTIONS</p> <p>KIT INCLUDES TOOLS REQUIRED</p>	<p>COMMAND ACCESS TECHNOLOGIES PD10-M-RIM PTS [pdf] Instruction Manual PD10-M-RIM PTS, PD10-M-RIM, PTS</p>
--	---

[Manuals+](#)