



COMMAND ACCESS TECHNOLOGIES MLRK1-DRX Motorized Latch Retraction Kit Instruction Manual

[Home](#) » [COMMAND ACCESS TECHNOLOGIES](#) » COMMAND ACCESS TECHNOLOGIES MLRK1-DRX Motorized Latch Retraction Kit Instruction Manual 

COMMAND ACCESS TECHNOLOGIES MLRK1-DRX Motorized Latch Retraction Kit



Contents

- [1 INSERT INSTRUCTIONS](#)
- [2 Kit Includes](#)
- [3 SPECIFICATIONS](#)
- [4 Technical Information](#)
- [5 Troubleshooting & Diagnostics](#)
- [6 Installation Instructions](#)
- [7 Customer Support](#)
- [8 Documents / Resources](#)
 - [8.1 References](#)
- [9 Related Posts](#)

INSERT INSTRUCTIONS

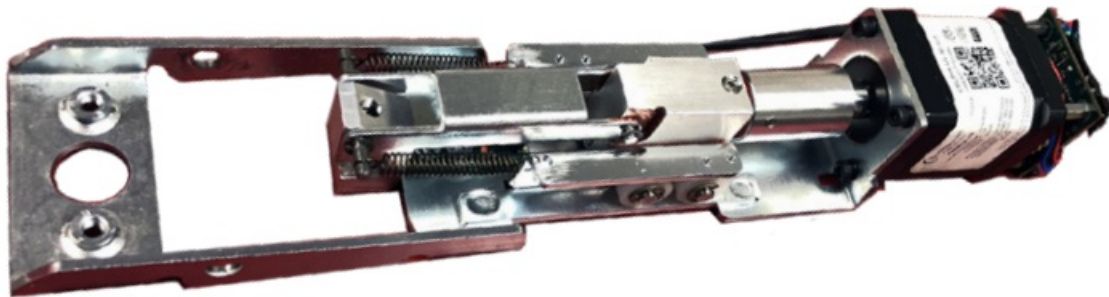
The Command Access MLRK1 is a field installable motorized latch-retraction kit for:

- MRLK1-DRX – Dorex 9500 series devices

Kit Includes

- A. 1- Motor Mount

A.



- B. 1- 50944 – Molex Pigtail

B.



- C. 1- 50030 – 6' Lead w/ VD Connector

C.



- D. 1- 10017 5/64" Allen wrench

D.



- E. 2- 40064 – Phillips Screws

E.



- F. 2- 40060 – cable tie

F.



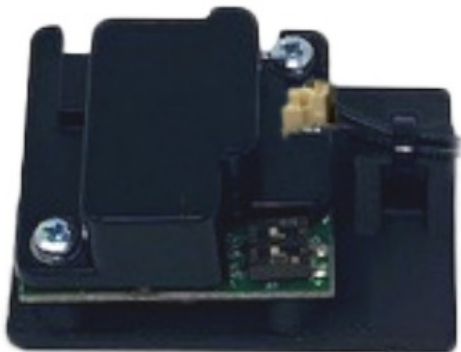
- G. 2- 40059 – mounting pad

G.



- H. 1- 60368/51186 – remote mm4s module

H.



- I. 1 – 50741 – remote module cable



installation video



SPECIFICATIONS

- Input Voltage: 24VDC +/- 10%
- AVERAGE low Torque LATCH RETRACTION CURRENT: 900 mA
- Average high torque latch retraction current: 2A
- Average holding current: 215 ma
- Wire gauge: Minimum 18 gauge
- Direct wire run – no relays or access control units in-between power supply & module

Recommended Power Supplies: Use a power limited class 2 power supply

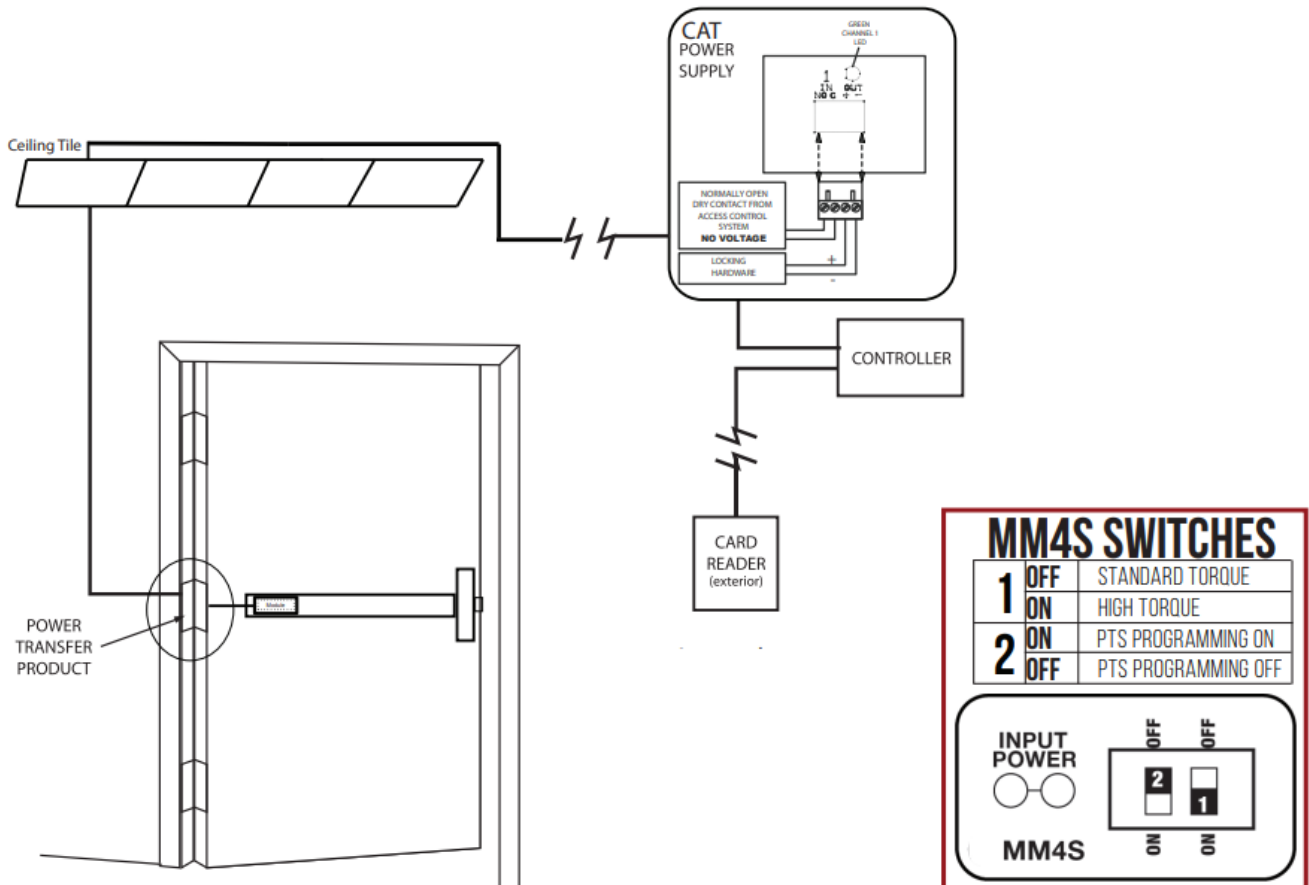
All Command Access exit devices & field installable kits have been thoroughly cycle tested with Command Access power supplies at our factory. If you plan on using a non-Command power supply it must be a filtered & regulated linear power supply

Technical Information

- **Step 1**– Select your preferred torque mode (ships in standard torque) Press the device push pad to the desired setting. (Recommend to fully depress and release 5%, giving the device room for changing door conditions.)
- **Step 2**– While depressing the push pad, apply power. (i.e. presenting the credential to the reader).
- **Step 3**– Continue to keep pad depressed, the device will beep 6 times. After the beeps have stopped, release the pad and now the adjustment is complete. If not to your liking repeat the 3 steps.

Step 4- Once you found the correct location, turn PTS switch to OFF position.

Setting PTS

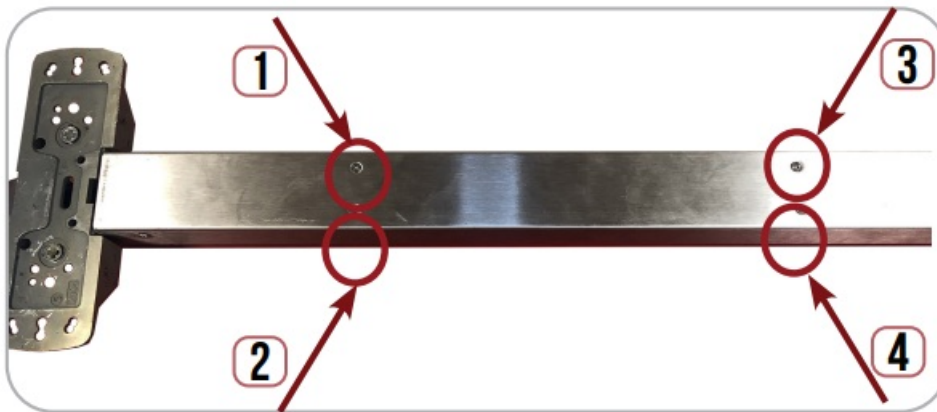


Troubleshooting & Diagnostics

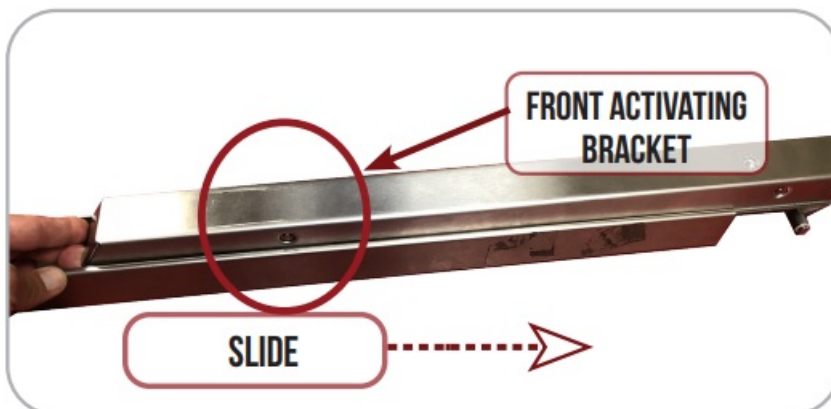
Beeps	Explanation	Solution
2 Beeps	Over Voltage	> 30V unit will shut down. Check voltage & adjust to 24 V.
3 Beeps	Under Voltage	< 20V unit will shut down. Check voltage & adjust to 24 V.
4 Beeps	Failed Sensor	Verify all 3 sensor wires are installed correctly. Replace sensor if problem persists by contacting office.
5 Beeps	Retraction or dogging failure	<p>After 1st fail : 5 beeps then immediately attempts to retract again.</p> <p>After 2nd fail : 5 beeps with pause in-between for 30 seconds then device attempts to retract again.</p> <p>After 3rd fail : 5 beeps every 7 minutes, device will not attempt to retract.</p> <p>To Reset: Depress bar for 5 seconds at any time.</p>
6 Beeps	PUSH TO SET	Device is recording it's new position and power mode after the 6th beep.

Installation Instructions

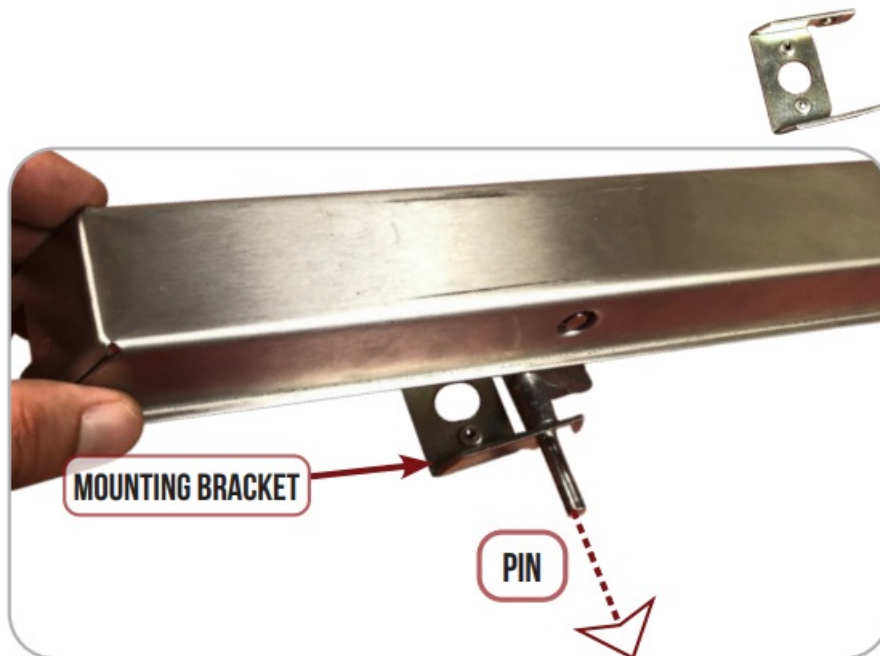
1. Flip over device & remove (4) screws securing push pad assembly to housing.



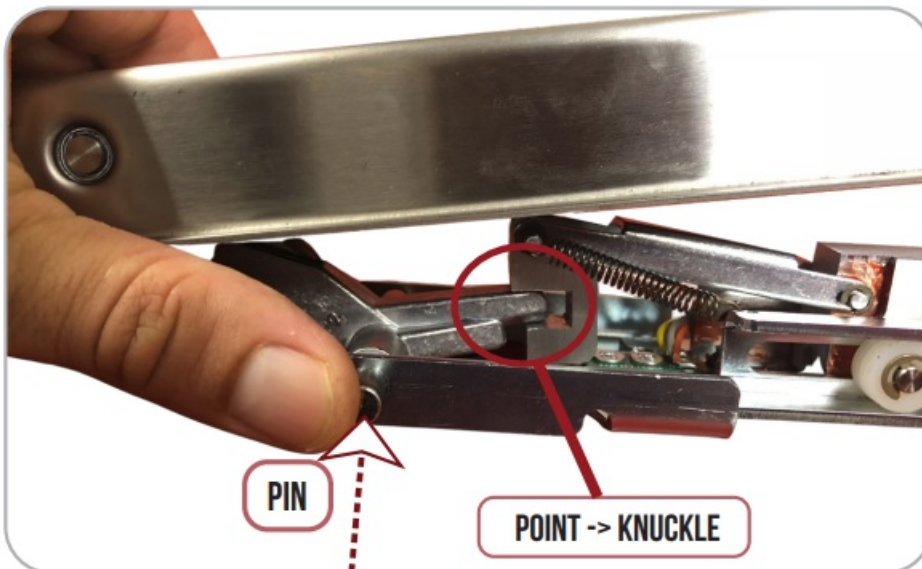
2. Slide Push Pad off Exit Device Housing.



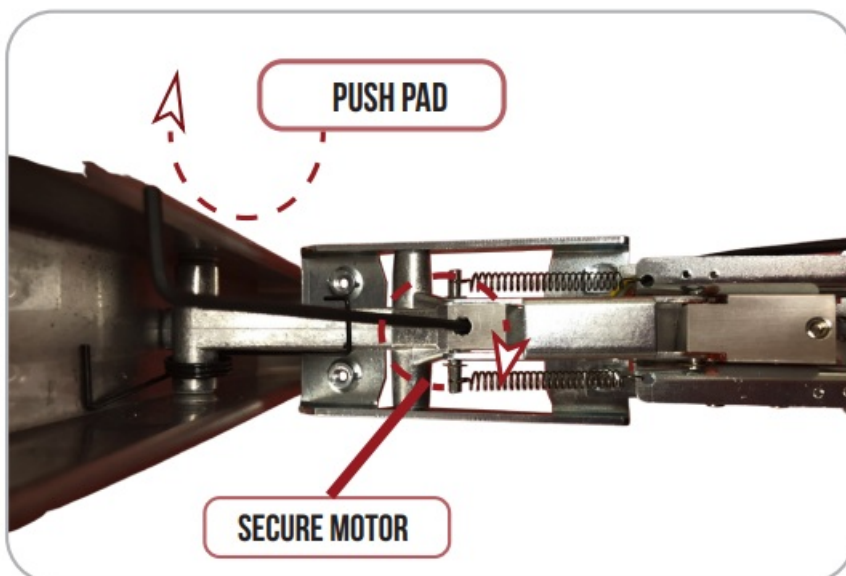
3. Locate the FRONT Activating Bracket. Remove original mounting bracket by pushing out PIN.



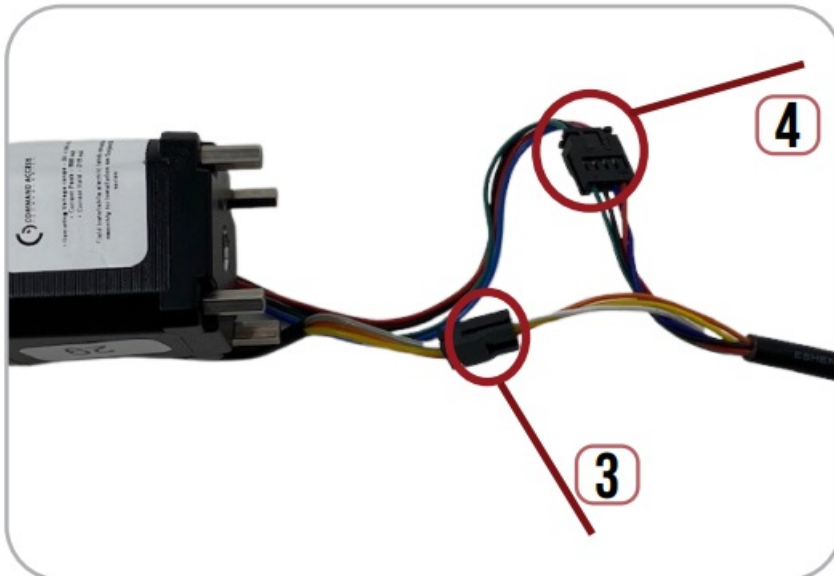
4. Install Point of Front Activating bracket into opening of motor's attaching knuckle. Depress activating bracket until the holes on the activating bracket & motor mount line up. Re-install factory pin.



5. Lift up Push Pad to 90 degrees & using the Allen Wrench to secure knuckle to front activating bracket.



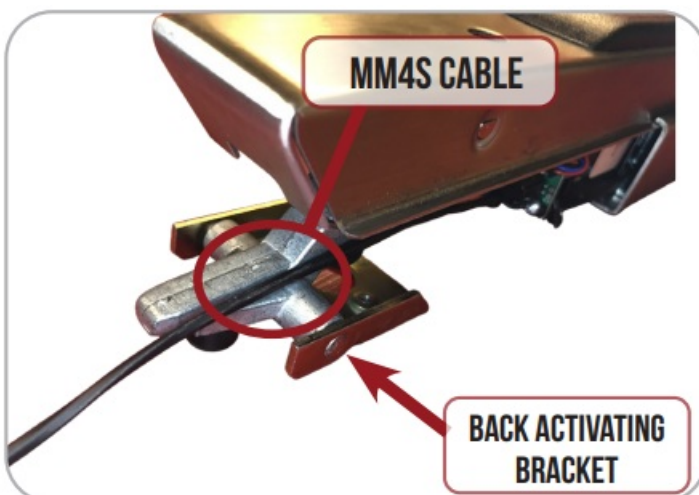
6. Connect MM4S Cable to back of motor's (3) Pin & (4) Pin connectors.



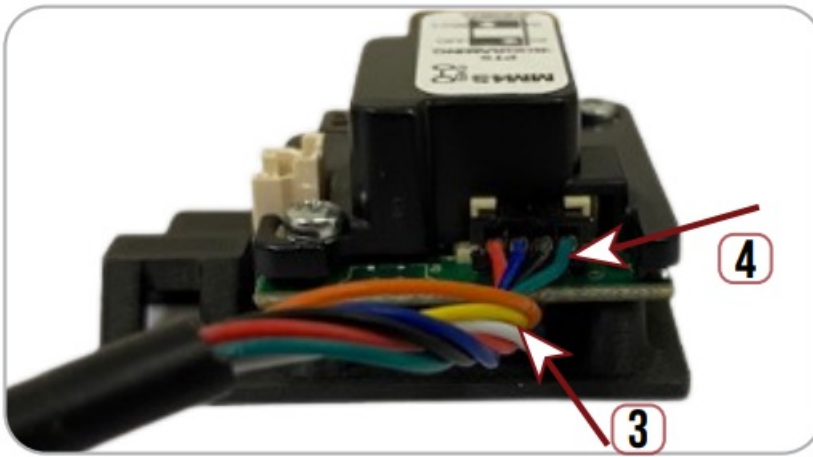
7. Slide Push Pad & Motor Kit back into housing. Be cautious of MM4S cable wires.



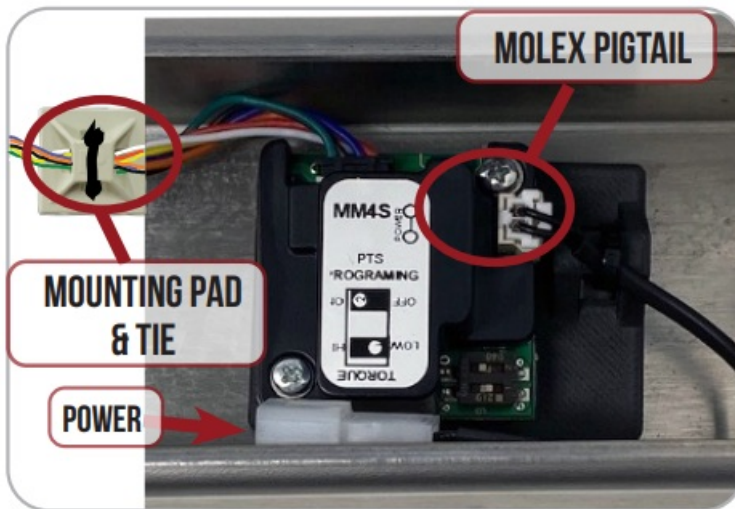
8. Flip Baserail/Pushpad over, holding motor kit in place so it stays attached. Secure Motor Kit with (2) M4 Screw provided.



9. Plug-in cable's (4) Pin TOP port & (3) Pin BOTTOM port into MM4S ports.



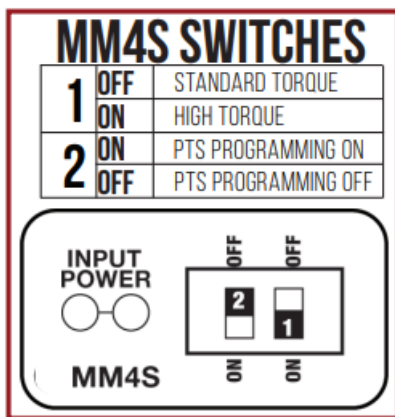
10. Using double sided tape, secure MM4S to inside of the back of exit device housing. Connect Molex Pigtail. Add Mounting Pad & cable tie to secure cable wires.



11. Set the “Push to Set Adjustment” following the steps below.



- Setting PUSH TO SET (PTS)



- Step 1**–Select your preferred torque mode (ships in standard torque) Press the device push pad to the desired setting. (Recommend to fully depress and release 5%, giving the device room for changing door conditions.)
- Step 2**– While depressing the push pad, apply power. (i.e. presenting the credential to the reader).
- Step 3**– Continue to keep pad depressed, the device will beep 6 times. After the beeps have stopped, release the pad and now the adjustment is complete. If not to your liking repeat the 3 steps.
- Step 4**– Once you found the correct location, turn PTS switch to OFF position.

Customer Support

U.S. Customer Support

1-888-622-2377

Visit our website for more details


www.commandaccess.com

Canada Customer Support

1-855-823-3002



Documents / Resources

	<p>COMMAND ACCESS TECHNOLOGIES MLRK1-DRX Motorized Latch Retraction Kit [pdf] I nstruction Manual</p> <p>MLRK1-DRX Motorized Latch Retraction Kit, MLRK1-DRX, Motorized Latch Retraction Kit, Latch Retraction Kit, Retraction Kit</p>
---	--

References

-  [Command Access Technologies](#)

Manuals+.