



comiso C17PRO Wireless Bluetooth Speaker Instruction Manual

[Home](#) » [COMISO](#) » comiso C17PRO Wireless Bluetooth Speaker Instruction Manual

Contents [[hide](#)]


- [1 comiso C17PRO Wireless Bluetooth Speaker](#)
- [2 True wireless stereo pairing](#)
- [3 Troubleshooting](#)
- [4 Warranty service](#)
- [5 Customer support](#)
- [6 Specification](#)
- [7 Package contains](#)
- [8 Controls](#)
- [9 Turn on/off](#)
- [10 Bluetooth connection](#)
- [11 Play](#)
- [12 Answer a call](#)
- [13 Charging](#)
- [14 FCC Conditions](#)
- [15 EU Conformity Statement](#)
- [16 Documents / Resources](#)
- [17 Related Posts](#)



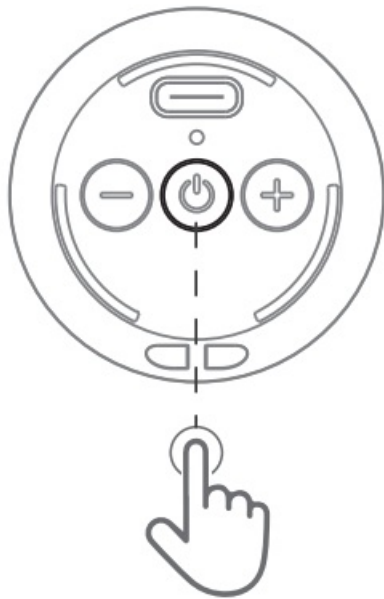
comiso C17PRO Wireless Bluetooth Speaker



True wireless stereo pairing

1. Turn on two “C17 PRO” speakers separately, do not pair with your phone first.
2. Triple tap “” button on one of the speakers, the True wireless stereo interconnection will start when the prompt sound is emitted;
3. Turn on the phone’s Bluetooth and search for “C17PRO” to pair.

Speaker A



Triple tap

Speaker B



4. If there is no prompt sound that means True wireless stereo pairing is failed. Please restart the speakers and then perform True wireless stereo connection operations again. (Note: When the speaker is in True wireless stereo pairing mode, all control functions are synchronized, please operate one of them is fine.
5. Please kindly note that the True wireless stereo mode cannot be paired when the speaker is working. Please stop playing music to process pairing.

Troubleshooting

- **Q1:** The speaker cannot be reconnected to the phone automatically when it is turned on.
 - **A:** Please delete the paired connection record C17PRO on your device, then search C17PRO to connect again.
- **Q2:** The phone cannot search out the Bluetooth name C17PRO.
 - **A:** Please keep the phone and speaker in the Bluetooth range of 10 meters.
- **Q3:** The phone cannot connect to the speaker.
 - **A:** If the blue indicator light does not flash after the speaker is turned on, that means the speaker has been connected by the other device. You need to double-click the power button to disconnect the Bluetooth. Then your phone can search for "C17PRO" to connect.
- **Q4:** The speaker cannot make voice calls
 - **A:** Please select speaker as sound output way on the call interface.
- **Q5:** True wireless stereo pairing function cannot be connected.
 - **A:** The effective range of True wireless stereo pairing interconnection is about 7-10 meters. Keep the device within this range and try again.
(Please follow the wireless stereo pairing instruction)
- **Q6:** The speaker cannot be turned on.
 - **A:** If the speaker is not used for a long time, the battery will be consumed naturally, please give it a charge.

Warranty service

We provide following warranty services:

1. 12-month warranty for quality-related issues: Within 12 months after the date of purchase, we take care of all quality-related issues with a replacement or full refund.
2. Within the warranty validity, we provide free after sale service, except for following cases:
 - **A.** No original warranty card or valid invoice.
 - **B.** The speaker's malfunction or damage is caused by force majeure, incorrect operation (not as this instruction manual directed) or any man-made factors.
 - **C.** The speaker is not purchased from authorized dealer and no authorized dealer's stamp on the warranty card.
 - **D.** The date of purchase on the warranty card has been changed.
 - **E.** The speaker's malfunction or damage appears during shipment.
 - **F.** The speaker's malfunction or damage is caused by disassembly or repairing without authorization.

Customer support

To our valued customers,

We want you to be completely satisfied with your purchase. If you have any questions about this product, please email us via support@comiso.com.cn.

Our customer support team will handle it for you within 24hours.

Sincerely,

COMISO

Warranty card

Name		Age	
Tel Num.		Postcode	
Gender		Product	
Date of Purchase		Product Code	
Part Num.		Sale Num.	
Postal Address			

Dealer Stamp:

User Signature:

Specification

- **Bluetooth Version:**JL5.0
- **Voltage input:**DC5V/1A
- **Output Power:** 5W*1
- **Battery:**3.7V/800mAh

- **Product Dimensions:**Φ50*H51mm
- **Product Weight:**93g
- **Operating Environmental temperature:** 45°C

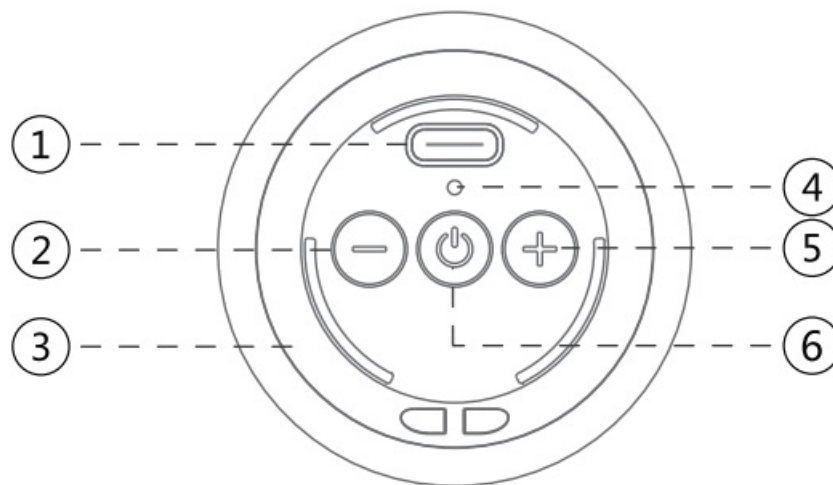
Cautions

1. There is slight heating during charging and normal operation of the speaker, it is a normal phenomenon;
2. Please turn off the power supply when you need to clean the speaker, Please keep the machine in a dry environment;
3. Please do not use alcohol, benzene, and other chemicals to clean the speaker;
4. Please don't let this speaker approach supercooled or overheated objects;
5. Please use the accessories provided by our company;
6. Please don't disassemble the speaker without authorization;

Package contains

1. C17PRO Wireless Speaker x1
2. Carrying Lanyard x1
3. Type C Charging Cable x1
4. Instruction x1

Controls



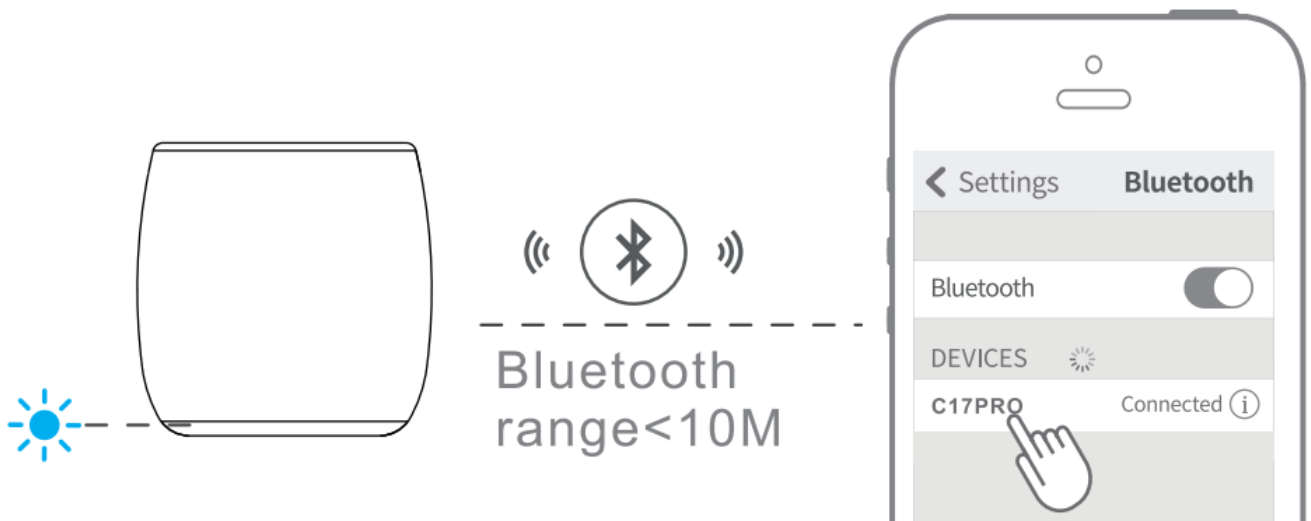
1. USB Charging Port
2. Previous song
3. LED Indicator Light
4. Microphone
5. Volume Up/ Next Song
6. ON/OFF/Bluetooth/ TWS/Play/Pause

Turn on/off

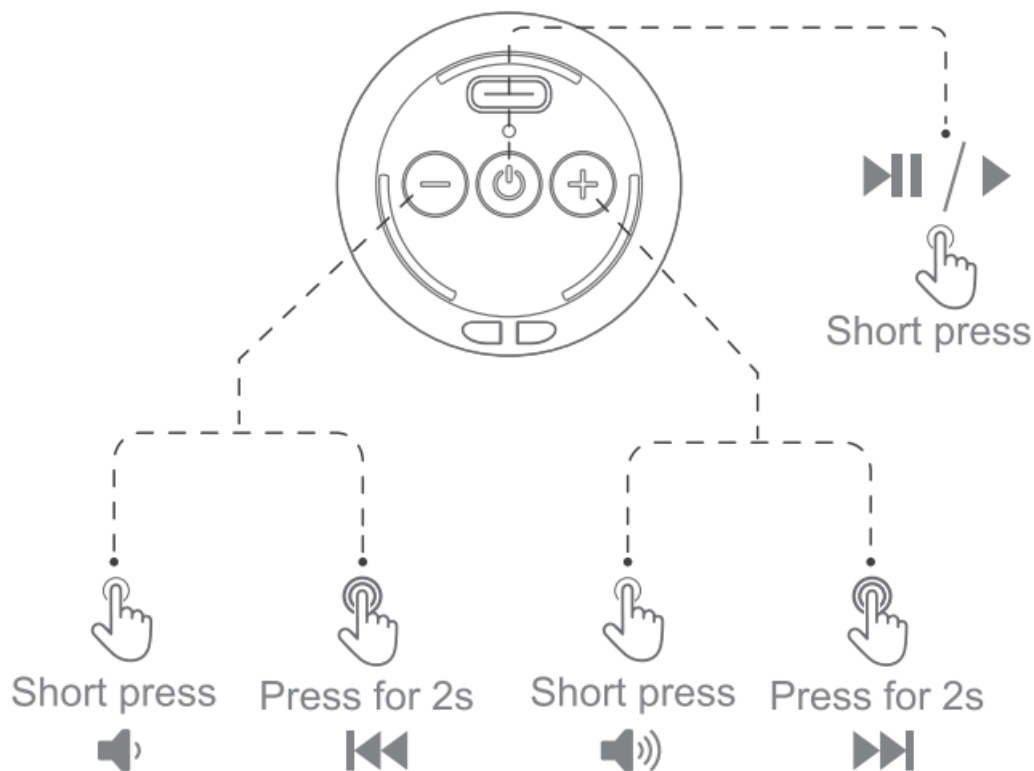


Bluetooth connection

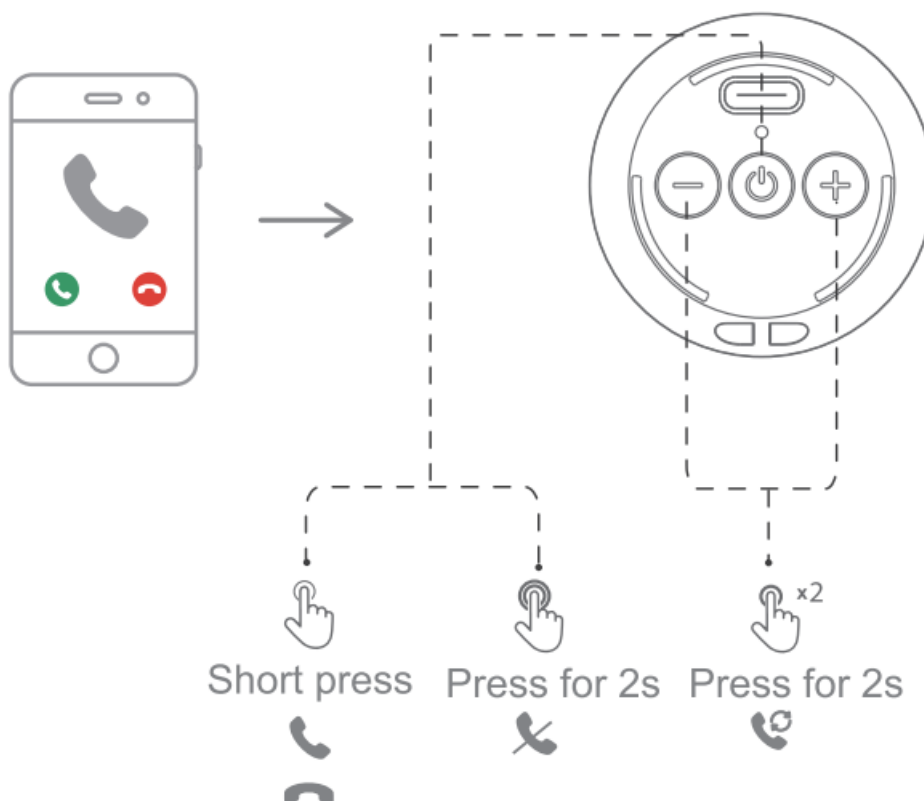
1. Turn on this speaker, search Bluetooth device name "C17PRO" on your phone/pc/tablet to pair.
This speaker will be paired back with your device within 10 seconds automatically, if there was connected successfully before.
2. The speaker will be shut down after 10 minutes without Bluetooth connection.



Play



Answer a call



Charing

Please fully charge the speaker for the first time use, the full charging time is about 2 hours. When charging, the indicator is keeping red, the red light goes out after charging finished. (Note: If the product is not used for a long time, please fully charge the product at least once a month to avoid excessive discharge, which will affect the service life of the battery)

Low power warning

When the power of the speaker is lower than 20%, you will hear the prompt sound of low power. please charge the speaker with the included type c charging cable DC5V/1A in time. When the power of the speaker is lower than 5%, the speaker will be shut down automatically.

FCC Conditions

This device complies with part 15 of the FCC Rules. Operation is subject to the following two conditions:

1. This device may not cause harmful interference.
2. This device must accept any interference received, including interference that may cause undesired operation.


EU Conformity Statement

This product and – if applicable – the supplied accessories (€ too are marked with “CE” and comply therefore with the applicable harmonized European standards listed under the EMC Directive 2004/108/EC, the RoHS Directive 2011/65/EU.

2012/19/EU (WEEE directive): Products marked with this symbol cannot be disposed of as unsorted municipal waste in the European Union. For proper recycling, return this. product to your local supplier upon the purchase of equivalent new equipment, or dispose of it at designated collection points. For more information see:

www.recyclethis.info

Documents / Resources

	<p>comiso C17PRO Wireless Bluetooth Speaker [pdf] Instruction Manual C17PRO-RED, B0C38MQ777, B0BPM23YXW, B0BPMBBQL3, C17PRO Wireless Bluetooth S peaker, Wireless Bluetooth Speaker, Bluetooth Speaker, Speaker</p>
---	---