



[Home](#) » [Support](#) » **Combuh B5 Rechargeable Sensor Ceiling Lights User Manual** 

Contents [[hide](#)]

- [1 Combuh B5 Rechargeable Sensor Ceiling Lights](#)
- [2 INTRODUCTION](#)
- [3 SPECIFICATIONS](#)
- [4 WHAT'S IN THE BOX](#)
- [5 FEATURES](#)
- [6 SETUP GUIDE](#)
- [7 CARE & MAINTENANCE](#)
- [8 TROUBLESHOOTING](#)
- [9 PROS & CONS](#)
- [10 WARRANTY](#)
- [11 FREQUENTLY ASKED QUESTIONS](#)
- [12 VIDEO – PRODUCT OVERVIEW](#)
- [13 References](#)



Combuh B5 Rechargeable Sensor Ceiling Lights



INTRODUCTION

For about **\$19.99**, the Combuh B5 LED Battery-Operated Ceiling Light provides a stylish, wire-free lighting option. Depending on settings and usage, its powerful 5000 mAh rechargeable battery may provide up to 13 hours of continuous light in ON mode or 25–45 days in motion-sensor mode. Choose between the full-range AUTO2 and energy-efficient AUTO1 (darkness-only activation) or the manual ON mode with optional timer controls (15/30/60 minutes). Its motion sensor activates within 13 feet (4 m). You may adjust brightness to suit your mood with stepless dimming (5–100%) and three color temperatures (warm, neutral, and cool). The Combuh B5 is a stylish and practical lighting option for corridors, showers, closets, and more. It is waterproof and magnetic for flexible positioning, especially in moist interior spaces like bathrooms.

SPECIFICATIONS

Model Number	B5
Price	Approx. \$19.99
Battery Capacity	5000mAh (USB-C rechargeable)
Runtime (ON Mode)	~13 hours
Runtime (Sensor Mode)	25–45 days (depending on brightness & use)

Motion Sensor Range	~13ft (4m), 120°
Modes	AUTO1 (darkness only), AUTO2 (24/7), ON Mode with timer (15/30/60min)
Dimming	Stepless (5–100%)
Color Temperatures	Warm / Neutral / Cool
Brightness	250lumens; 83lm/W efficiency
Waterproof Rating	Indoor-safe for damp areas (not outdoor-rated)
Installation	Magnetic mount, 3M adhesive, or screw (flexible installation)
Diameter × Height	7.48in × 0.59in (≈19cm × 1.5cm)
Material	ABS + Polycarbonate
Control Method	Remote control + push buttons
Warranty	2 years
IP Rating	IP44 waterproof rating

Product Details



Included:

- | | |
|------------------------|-------------------|
| 1 x Rechargeable light | 1 x Adhesive Tape |
| 1 x Remote Control | 2 x Screws |
| 1 x USB-C Cable | 2 x Bolts |
| 1 x Steel Backplate | 1 x Manual |

Specifications:

- | | |
|----------------|-------------------------------------|
| Power: 5 W | Color Temperature: |
| Lumens: 250 LM | Warm White/Cool White/Neutral White |
| Dimmable: Yes | |

WHAT'S IN THE BOX

- 1 x Combuh B5 Ceiling Light
- 1 x Remote Control
- 1 x USB-C Charging Cable
- 1 x Iron Mounting Plate
- 1 x Double-Sided Tape
- 2 x Screws + Rubber Caps
- 1 x Manual

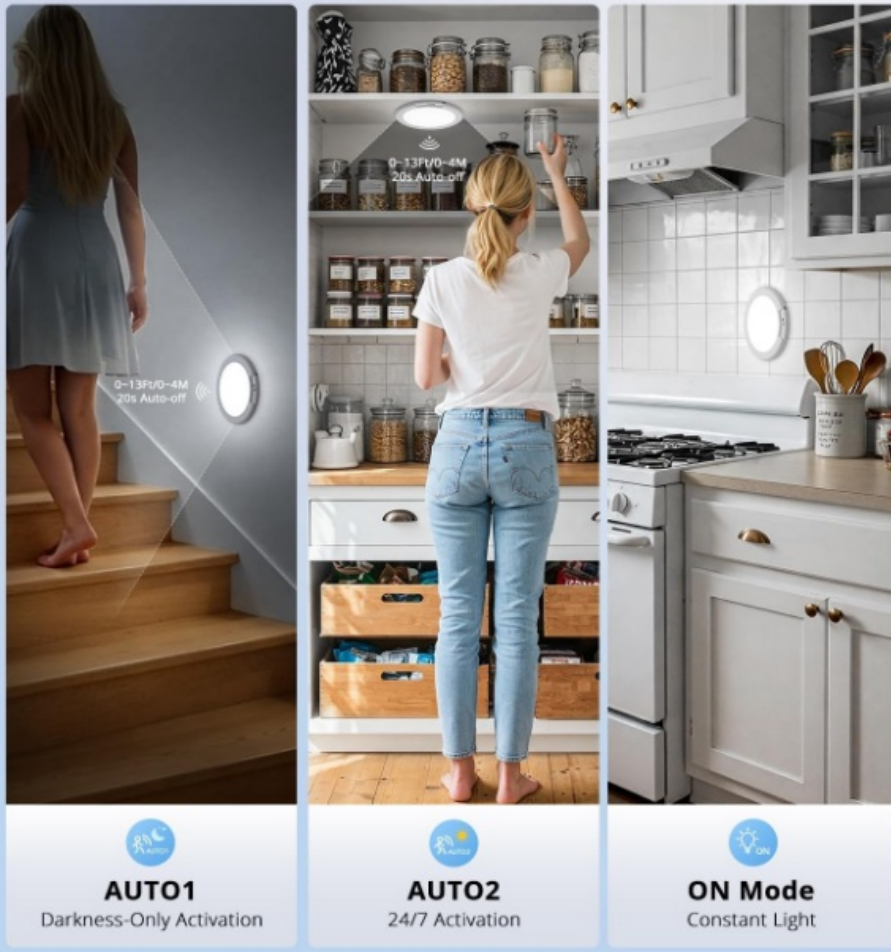
FEATURES

- **Built-In 5000mAh Rechargeable Battery:** Say goodbye to disposable batteries this powerful built-in battery offers sustainable, long-term lighting.



- **Extended Usage Time:** Delivers up to 13 hours of continuous light or 25 to 45 days when used in motion-sensor mode.
- **Smart Motion Detection Modes:** Choose between auto-on when ambient light is low, or all-day detection—ideal for both day and night use.

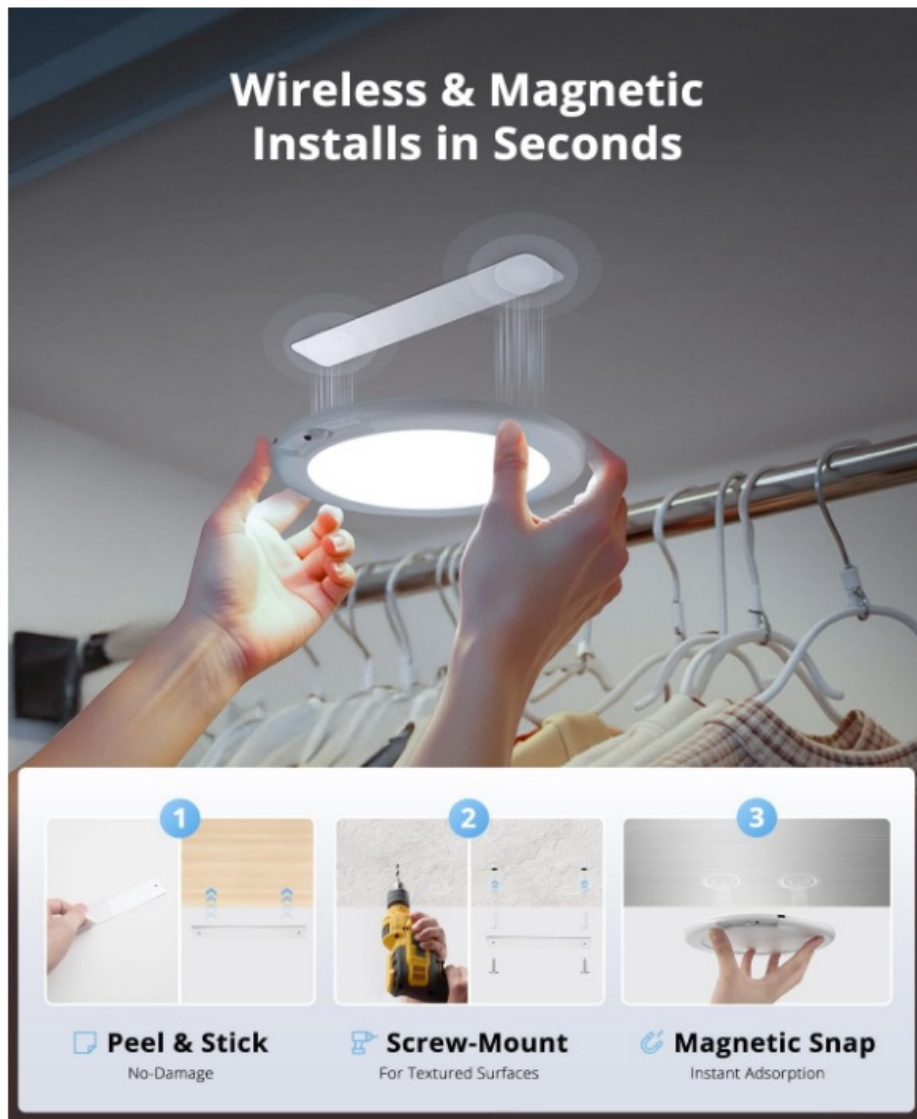
3 Smart Modes for Any Need



- **Manual ON Mode with Auto Timer:** Convenient auto shut-off options for 15, 30, or 60 minutes, perfect for temporary lighting needs.
- **Smooth Stepless Dimming (5%–100%):** Fine-tune the brightness to suit everything from reading to ambient lighting.
- **Triple Color Temperature Options:** Easily switch between warm, neutral, or cool white tones to create the perfect atmosphere.
- **Flexible Mounting Options:** Install damage-free using magnetic backing and 3M adhesive, or opt for screws for extra stability on rough surfaces.

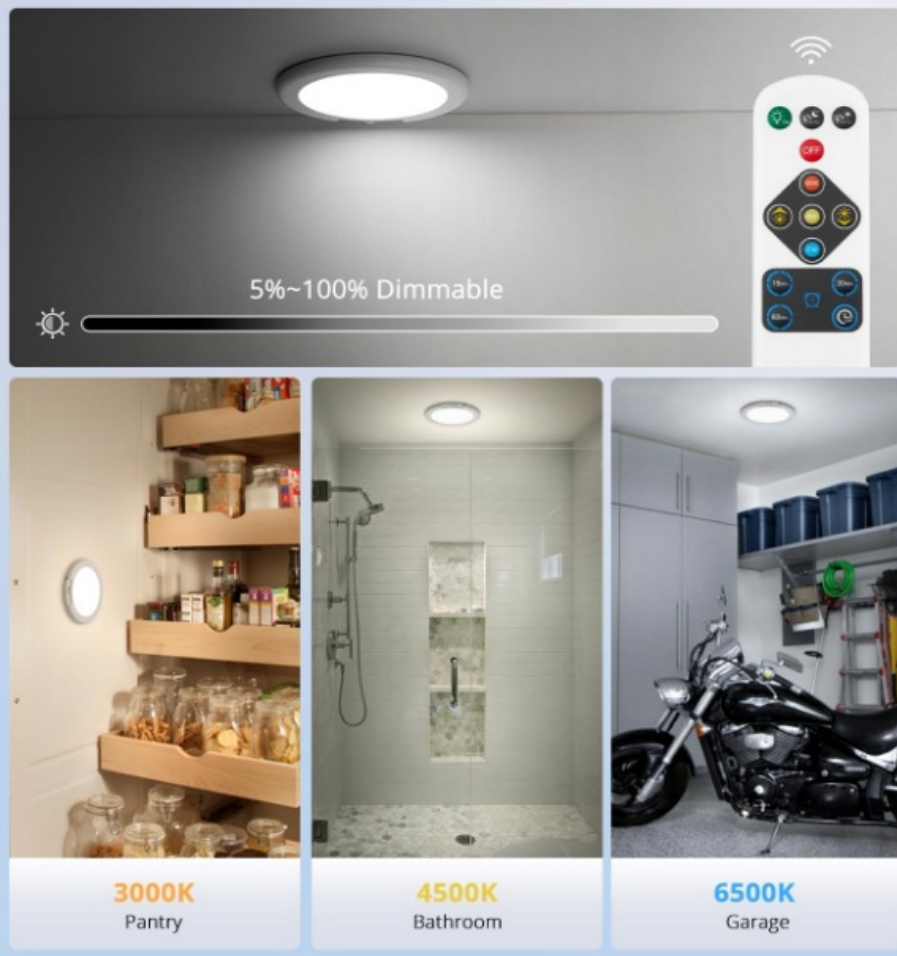


- **Water-Resistant Design:** Built to handle moisture-prone spaces like kitchens, bathrooms, and laundry areas.
- **Wide Lighting Coverage:** Effectively illuminates spaces between 54 to 108 square feet—great for mid-sized areas like closets, hallways, or pantries.
- **Bright and Efficient Output:** Produces up to 250 lumens with minimal energy draw, combining brightness with efficiency.
- **Easy Control Options:** Operate with the included remote or onboard buttons—whichever you find most convenient.
- **Compact, Lightweight Build:** Its slim form keeps it discreet while providing powerful illumination.
- **Stylish Modern Finish:** Designed to blend in seamlessly with your home decor while upgrading your space.
- **Two Installation Modes:** Choose magnetic attachment for easy removal or screw it in for permanent placement.



- **Worry-Free Warranty:** Backed by a 2-year manufacturer's warranty to ensure lasting peace of mind.

Customize Your Light with Ease



SETUP GUIDE

- **Step 1: Unpack Everything Carefully:** Remove all components from the box and make sure everything you need is included.
- **Step 2: Fully Charge the Light:** Use the provided USB-C cable to charge the unit for around 4 to 5 hours until the indicator shows it's ready.
- **Step 3: Clean the Installation Area:** Wipe down the ceiling, cabinet, or wall where the light will be placed to ensure secure mounting.
- **Step 4: Choose Your Mounting Method:** Either stick it using the 3M adhesive or screw it onto uneven or textured surfaces for extra grip.
- **Step 5: Attach the Mount Securely:** Fix the mounting plate in position and align the magnetic base of the light for a snug fit.
- **Step 6: Turn It On:** Use the physical buttons or remote control to power on the device.
- **Step 7: Pick a Mode:** Select between AUTO1 (ambient light sensor + motion),

AUTO2 (motion-only), or ON for continuous lighting.

- **Step 8: Adjust the Brightness:** Dim or brighten the light smoothly to match your specific lighting needs.
- **Step 9: Set the Color Temperature:** Choose from warm, natural, or cool white depending on your preference or time of day.
- **Step 10: Activate Auto-Off Timer:** In ON mode, set the timer for 15, 30, or 60 minutes to save energy.
- **Step 11: Test Motion Sensor:** Walk within range to see how it triggers light-up—ideal for entryways, stairs, and closets.
- **Step 12: Check for Auto Shutoff:** Ensure it turns off automatically after approximately 20 seconds of no motion.
- **Step 13: Recharge When Needed:** When brightness fades, simply detach and plug it back in using the USB-C cable.
- **Step 14: Remount Easily:** Once recharged, snap the light back onto the magnetic plate for continued use.

CARE & MAINTENANCE

- **Keep Surfaces Clean:** Wipe the light and mounting base with a dry or slightly damp cloth—never soak or submerge.
- **Maintain Adhesion and Magnetism:** Periodically clean magnetic and adhesive areas to prevent slippage or detachment.
- **Recharge Promptly:** If the light seems dimmer than usual, it's time for a recharge before your next use.
- **Use Indoors Only:** While water-resistant, this light is not suitable for outdoor exposure.
- **Drain Battery for Storage:** Fully deplete and then recharge before storing for extended periods.
- **Replace Remote Batteries:** If the remote becomes less responsive, replace the battery to restore functionality.
- **Inspect Moisture Seals:** In humid rooms, occasionally check for signs of condensation or weakening seals.
- **Secure the Mount Regularly:** If adhesive begins to wear out, reinforce with new tape or use the screw mount.

- **Handle with Care:** Avoid dropping or hitting the unit to protect internal components and battery life.
- **Test Sensor Periodically:** Walk within the range to confirm the motion sensor is still functioning accurately.
- **Keep Controls Clean:** Ensure that buttons remain free of dust or grime for smooth operation.
- **Clean Sensor Lens:** Gently wipe the sensor area to maintain reliable detection performance.
- **Unplug Before Cleaning Internals:** If you ever open the housing for any reason, ensure the unit is unplugged.
- **Use a Reliable Charger:** Always connect to a stable USB power source to avoid charging issues.

TROUBLESHOOTING

Issue	Solution
Light won't turn on	Ensure full charge; check USB cable and power source.
Motion sensor not activating	Clean sensor, try AUTO2 or adjust ambient light sensitivity.
ON mode not timing out	Confirm timer is activated (15/30/60 min setting).
Dimming not working	Use the correct dimming buttons or remote; reset if unresponsive.
Color temperature won't change	Cycle modes via remote or button until desired tone appears.
Light detaches from mount	Clean surface or use screws for textured areas.
Waterproofing compromised	Dry thoroughly and ensure rubber seals/caps are intact.
Weak daylight detection	Switch to AUTO2 for full-day detection.

Issue	Solution
Short battery runtime	Reduce always-on duration or lower brightness.
Remote unresponsive	Replace remote battery and ensure line of sight.

PROS & CONS

Pros:

- Long battery life with fast USB-C recharge.
- Smart motion and manual modes for flexibility.
- Adjustable brightness and color temperature.
- Easy, renter-friendly installation.
- Waterproof for safer use in bathrooms.

Cons:

- Not rated for full outdoor exposure.
- Always-on mode shortens battery quickly.
- Mounting adhesive may weaken in humid areas.
- Remote batteries will need periodic replacing.
- Slightly higher upfront cost for the feature set.

WARRANTY

The CombuH B5 unit comes with a **2-year warranty**, offering replacement or support for manufacturing-quality issues

FREQUENTLY ASKED QUESTIONS

What are the available lighting color modes on the CombuH B5 Rechargeable Sensor Ceiling Light?

The CombuH B5 offers three color temperature options: warm white, neutral white, and cool white. These can be changed using the onboard button or included

remote.

How do I dim the light on the Combuh B5 model?

Brightness can be adjusted steplessly from 5 to 100 percentage using the built-in button or the remote control included in the package.

How long does the battery of the Combuh B5 last after a full charge?

On full charge (via USB-C), it lasts up to 13 hours in ON mode, or 25–45 days in motion sensor mode, depending on brightness and motion activity.

What installation methods are supported by the Combuh B5 Sensor Ceiling Light?

You can install it using 3M adhesive, screws, or directly onto metal surfaces via the built-in magnetic base tool-free and renter-friendly.

How do I activate timer functions on the Combuh B5 light?

Use the remote control to set auto-off timers for 15, 30, or 60 minutes while in ON mode.

The motion sensor on my Combuh B5 ceiling light is not triggering—what should I do?

First, ensure it is set to AUTO1 or AUTO2 mode, not ON. Then check if the sensor is blocked or if it is placed too high-far from movement. Max range is 13 ft -4m.

How do I know when my Combuh B5 light is fully charged?

When connected via USB-C, the indicator LED should stop blinking or stay solid

(depending on version) when the battery is fully charged typically in 4 to 5 hours.

VIDEO – PRODUCT OVERVIEW

<https://manuals.plus/wp-content/uploads/2025/08/Combuh-B5-Rechargeable-Sensor-Ceiling-Lights-User-Manual.mp4>

References

- [User Manual](#)

🔍 B0D5YF2K2R, B5, Combuh, Combuh B5, Rechargeable Sensor Ceiling Lights, TL070, user

📁 Combuh manual

Leave a comment

Your email address will not be published. Required fields are marked *

Comment *

Name

Email

Website

☐ Save my name, email, and website in this browser for the next time I comment.

[Post Comment](#)

Search:

[Search](#)

[Manuals+](#) | [Upload](#) | [Deep Search](#) | [Privacy Policy](#) | [@manuals.plus](#) | [YouTube](#)

This website is an independent publication and is neither affiliated with nor endorsed by any of the trademark owners. The "Bluetooth®" word mark and logos are registered trademarks owned by Bluetooth SIG, Inc. The "Wi-Fi®" word mark and logos are registered trademarks owned by the Wi-Fi Alliance. Any use of these marks on this website does not imply any affiliation with or endorsement.